



# Caol & Lochyside Flood Protection Scheme



Community Liaison Meeting  
25<sup>th</sup> April 2022





## Project Update –

### Kilmallie Rd flood wall

- Drainage and watermain installation complete on Kilmallie road. Water main passed tests required. Some tie-ins remain but ongoing over next few weeks.
- Pumping station mechanical fit out complete and wet well cover slab has been cast.
- Vegetation along river bank has been stripped and ready for rock armour works.

### Caol foreshore flood embankment

- Embankment construction progressing well with rock armour and fill ongoing. Approximately 85% of the works have been completed.
- Drainage upgrade works on Glenmallie road are almost complete just needs to be reinstated with tar.
- Piling works approximately 75% complete on foreshore.
- Gabion baskets on access ramps underway approx. 35% complete.

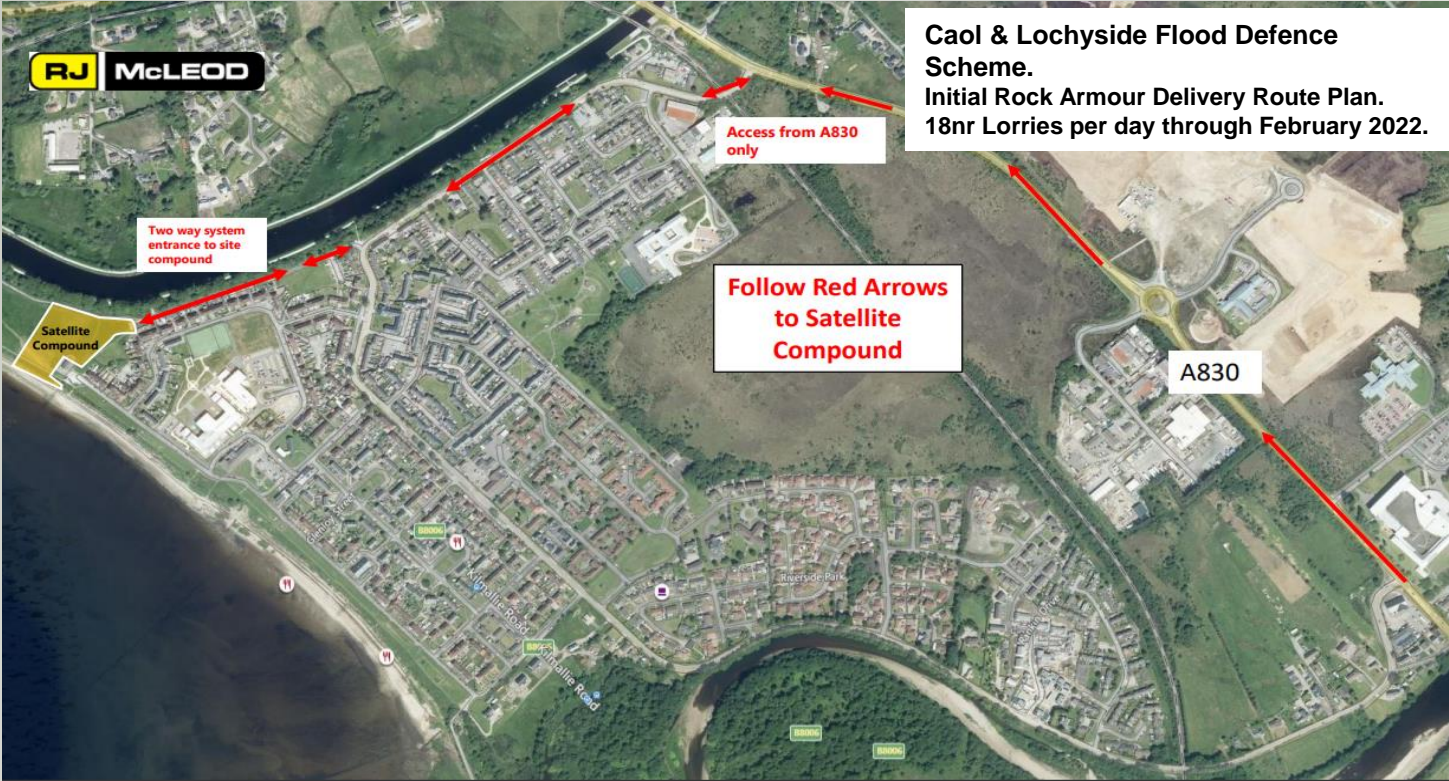


# Kilmallie Rd – Traffic management phasing



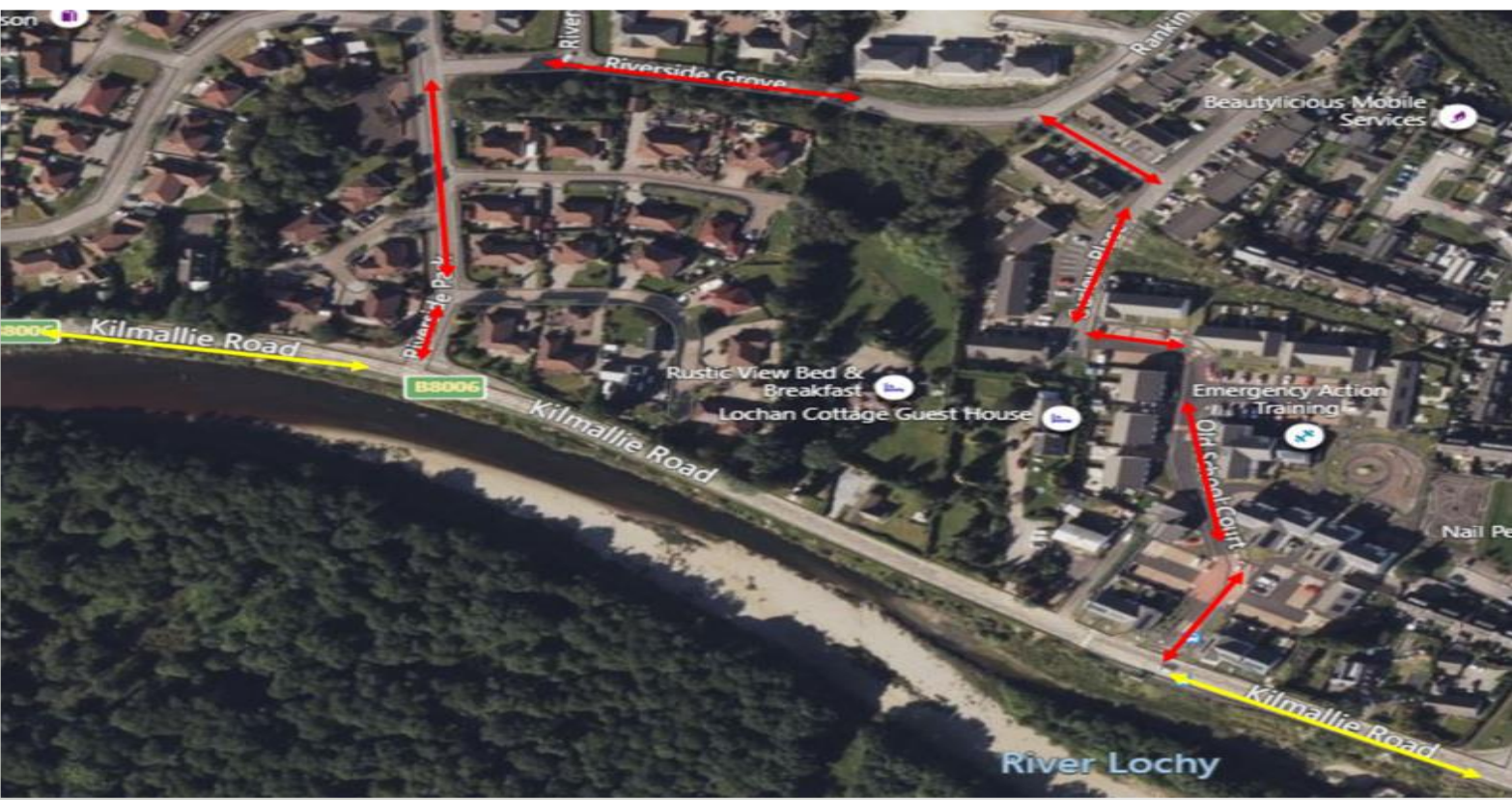


# Caol foreshore – Rock armour delivery route





# Kilmallie Rd – Pedestrian diversion April/May 2022





## Erracht Drive gully construction phasing plan





## Progress Photos – Water main tie-in works on Kilmallie road





# Progress Photos – Drainage Works on Glenmallie road ready for tar







Progress Photos – New headwall install adjacent to shinty club





Progress Photos – Gabion basket construction progress.





Progress Photos – Rock armour revetment works sections almost completed need topped off.





# Progress Photos – Pile wall installation Caol foreshore





## Planned Works for next period up to end of March

### **Kilmallie Rd flood wall**

- Water main tie-in works will be completed.
- Continue with Pumping station construction. Final manhole installation, head walls and cover slab will be lifted into position.
- Shape batter on river side and possible rock armour works underway.

### **Caol foreshore flood embankment**

- Rock armour revetment works ongoing
- Piling works along line of embankment to continue.
- Drainage works to continue on Erracht Drive
- Gabion basket construction ongoing on access ramps.
- SW diversion SW04 and foul rising main SW08 & 09 will be underway.



## Community Benefits

- **90% of site personnel reside in the Highlands.**
- **65% of site personnel live within 75-mile radius of the site.**
- **50% of site personnel are locals (live within a 10-mile radius of the site).**
- **To date we have employed 2 local labourers, 1 ganger, 2 machine operators and 3 local cleaners all living within 2 miles of the site.**
- **Adverts in job centre for labourers and machine operators.**
- **Discussions with the local schools on talks, time capsules and training for secondary pupils.**
- **Donation of shinty equipment to Lochaber High School.**
- **An alternative design proposal for part of the works has generated benefits including reduced vehicle movements and a financial saving which is allocated to be spent on Community Benefits.**



**Any Questions?**