



Uig Harbour Redevelopment



Community Liaison Meeting
4th August 2022





Summary of Works – since last meeting

- **Removal of obstructions from piling line on Approachway and Berthing**
- **Import and compact fill to reclamation area @ 53,000 tonnes to date**
- **Scaffold, Hydro Demolition and Concrete Repairs to existing pier**
- **Sheet piling along Approachway**
- **Installation of drainage in Marshalling Area**
- **Piling of combi wall to Berthing structure**
- **Emergency Service Drill**



Planned Works

- **Rock & Aggregate delivery from Kingsburgh Quarry**
- **Tube and Sheet pile delivery for Berthing Structure**
- **Concrete Repairs along Approach Pier – due to be completed this month**
- **Terminal Building Piling in reclamation area**
- **Continue Piling to Berthing Structure using Marine Plant**
- **Drainage to Marshalling Area**
- **Delivery of second Jackup Barge & Crane for Approachway Piling**



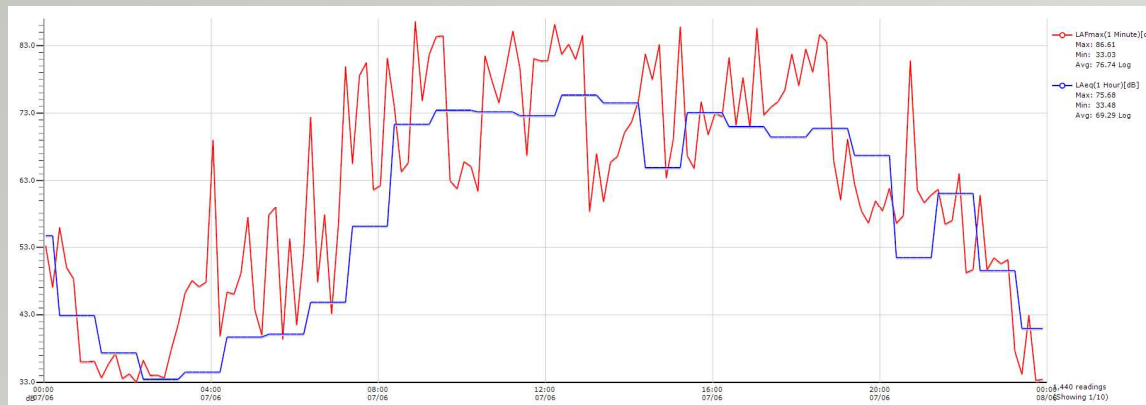
Noise - Piling Hammer Shrouds / Kilts



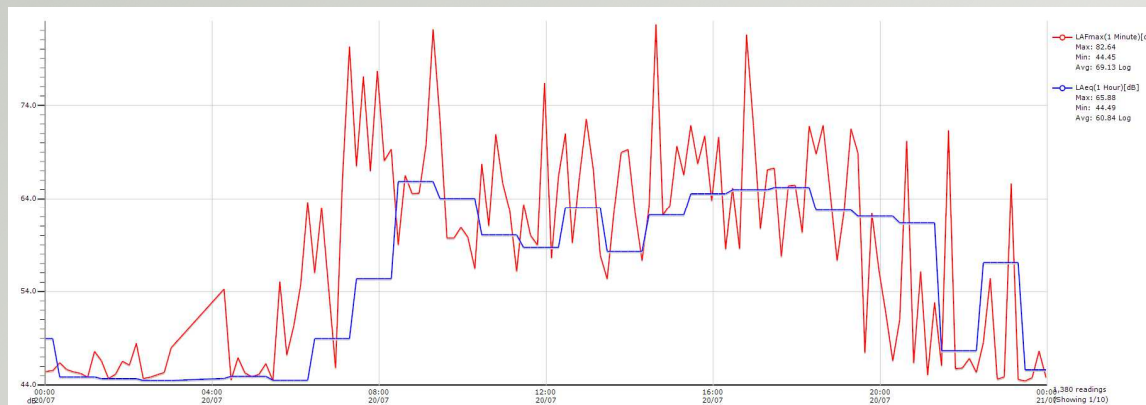
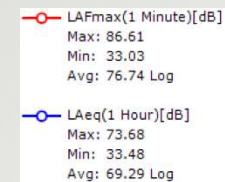
Following comments made at the last meeting we investigated the use of a shroud around the hammer. These are a retrofit solution, whilst they reduce the noise unfortunately they obstruct visibility to the top of the pile and the operatives cannot see if the top of the pile is deforming or splitting.



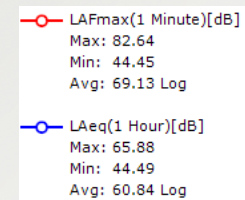
Noise Monitoring – Real Time



7th June – Hydro demolition under approachway & pile driving on approachway face for fisherman compound

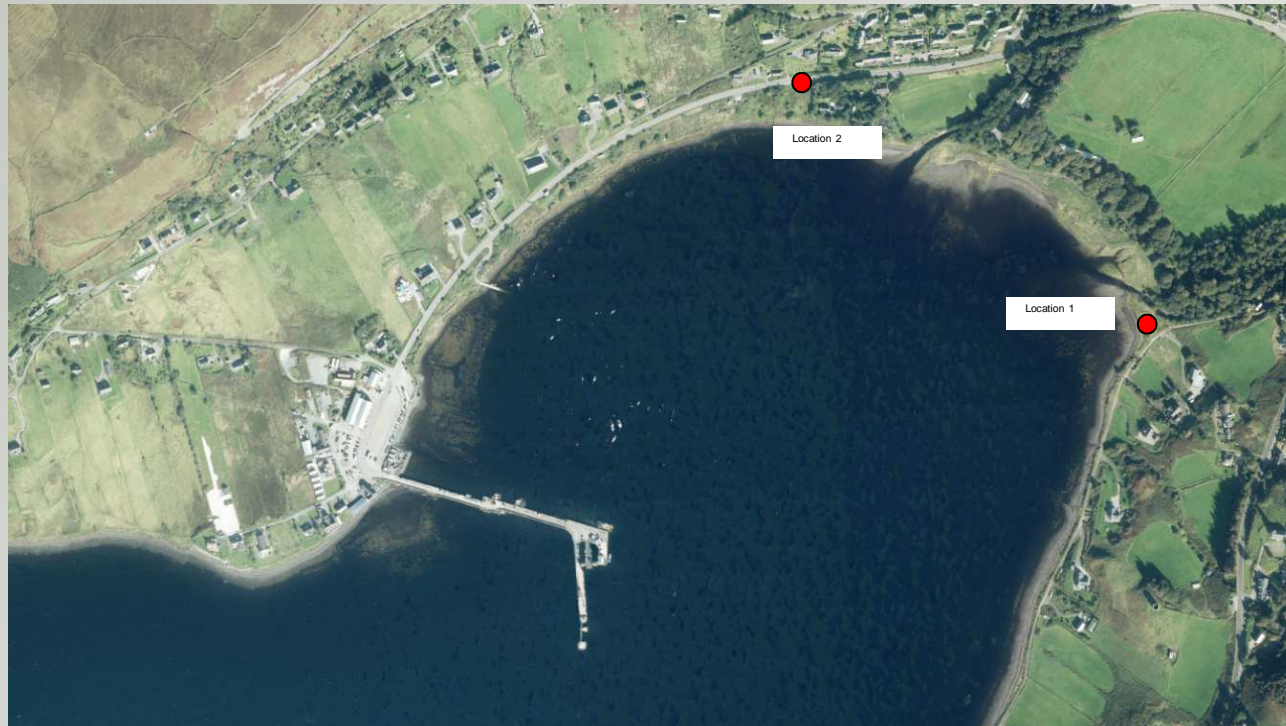


20th July – Hydro demolition under approachway & pile driving at berthing structure



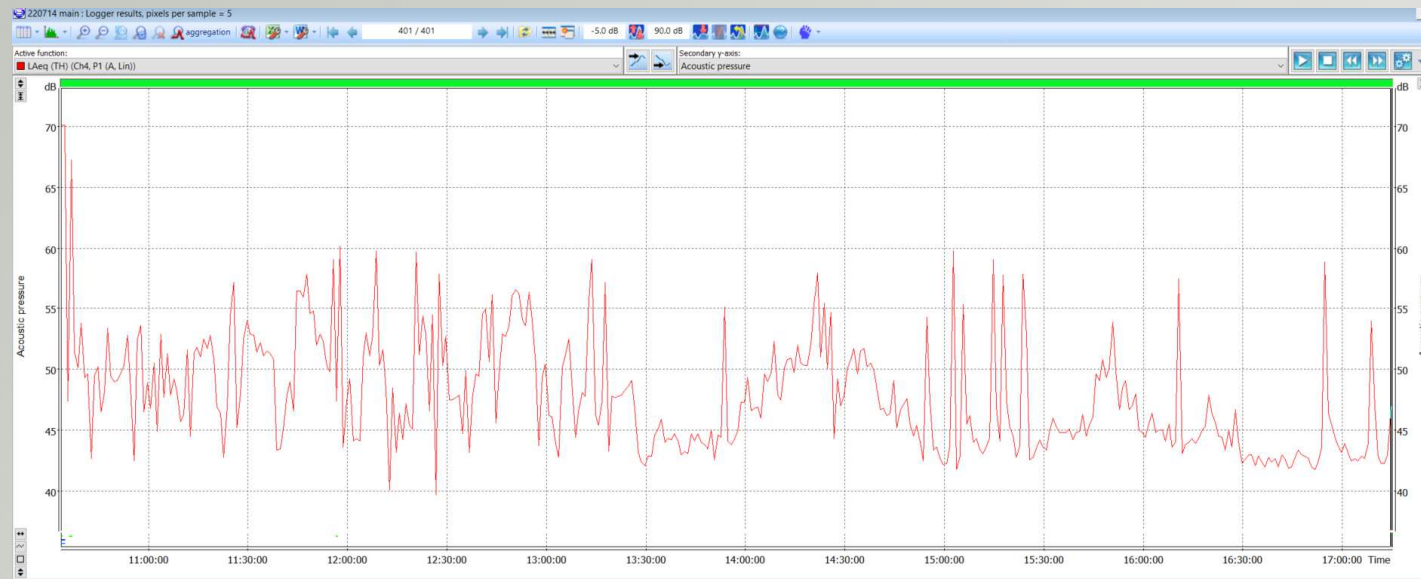


Noise Monitoring – Locations





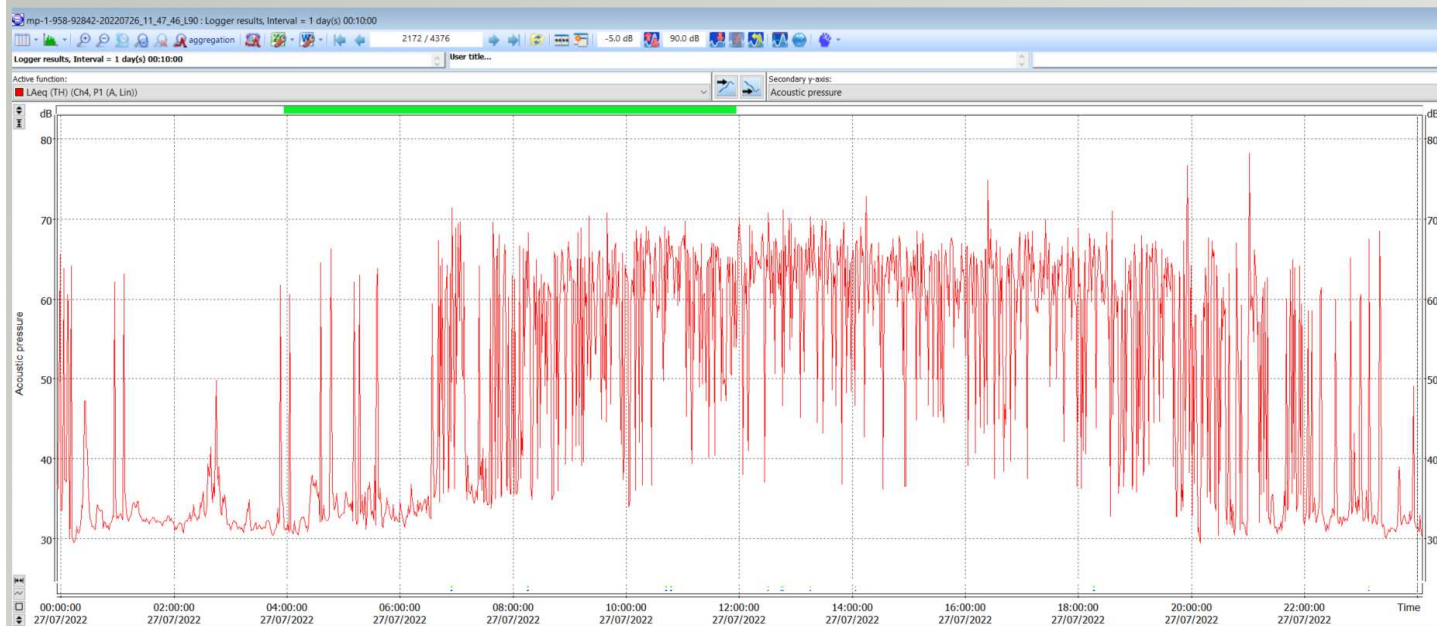
Noise Monitoring – Real Time Location 1



Noise data from 14/07/22 –
Piling works at berthing
structure at 1200



Noise Monitoring – Real Time Location 2



Noise data from 27/07/22 –
Piling works at berthing
structure at 1000



Obstructions – Old piles recovered from seabed





Concrete Repairs to Pier

Before & After



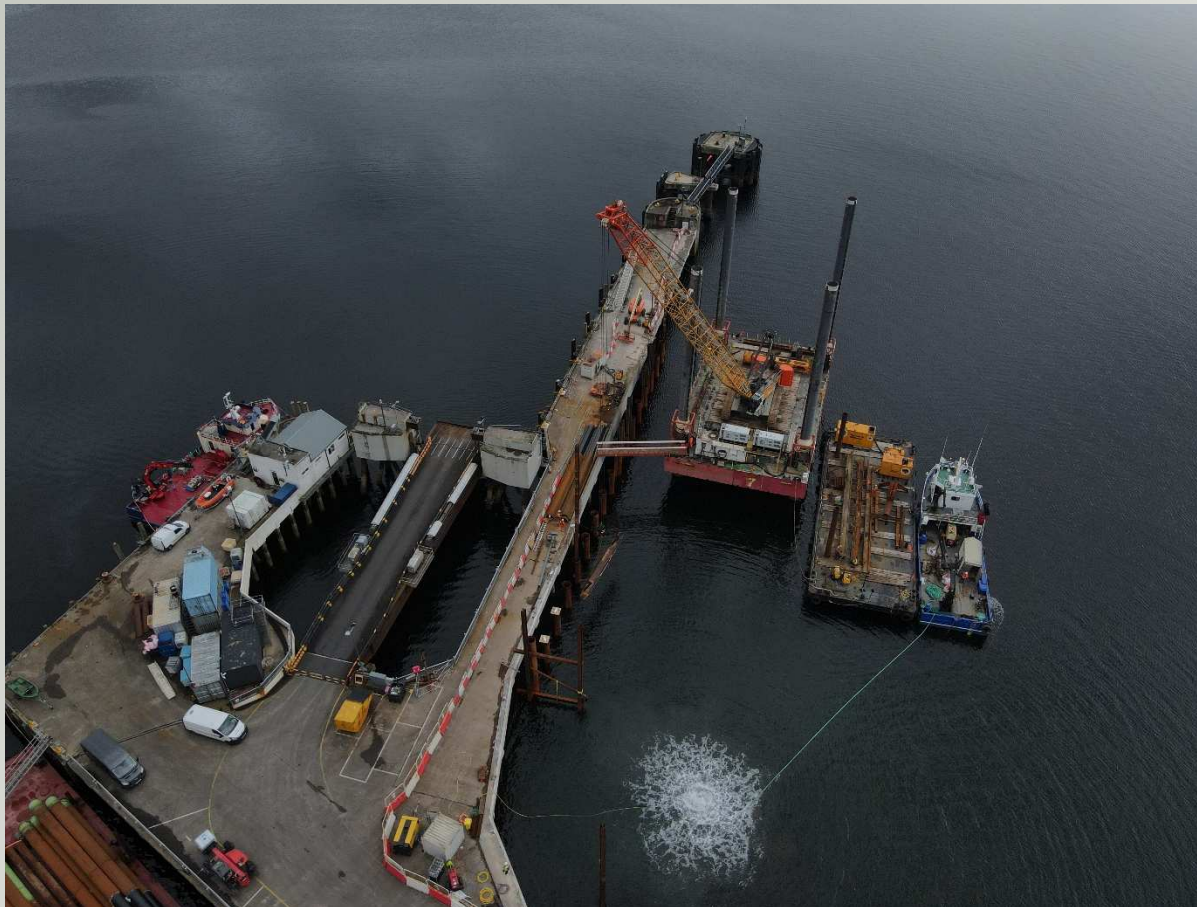


Fishermans Wharf – Reclamation Area and Sheet Piling



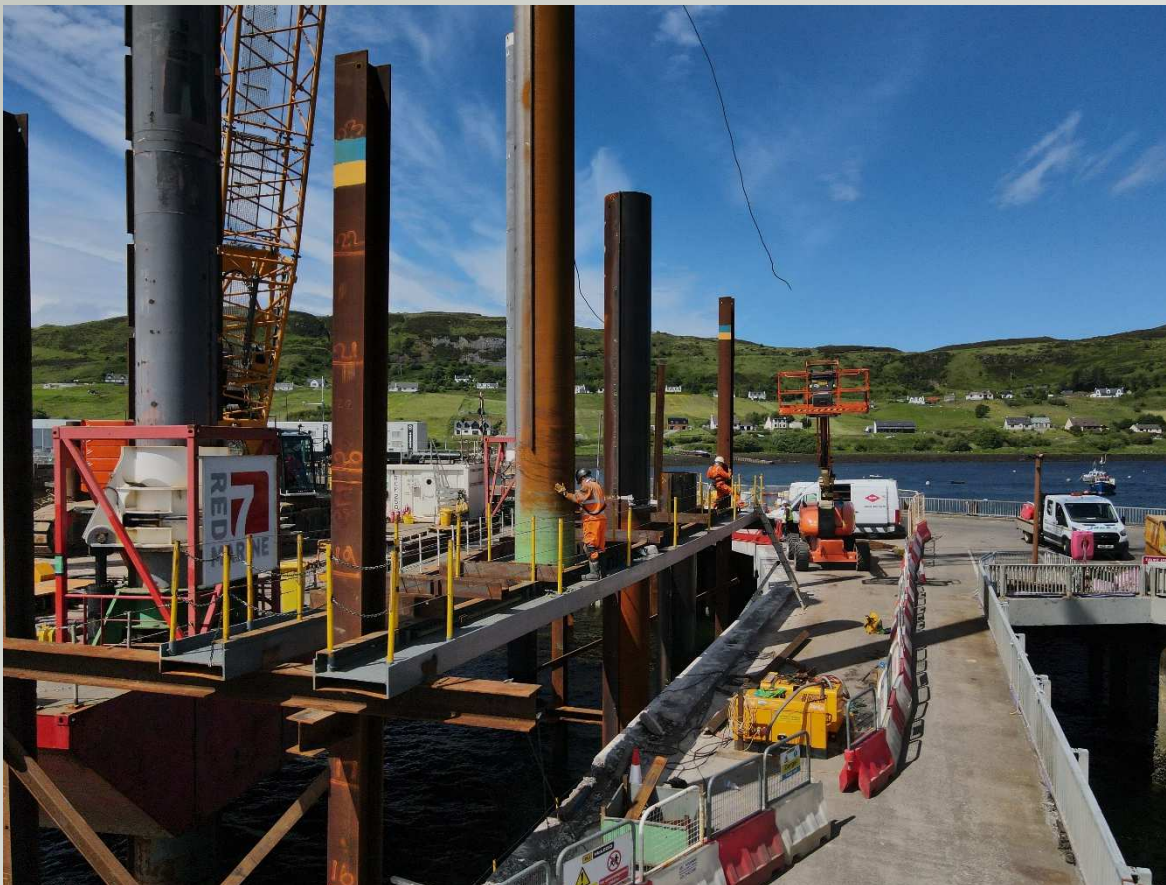


Piling to Berthing Area – Jackup, Pile Barge, Workboat & Divers





Piling Gates – Pitching Tubular Piles



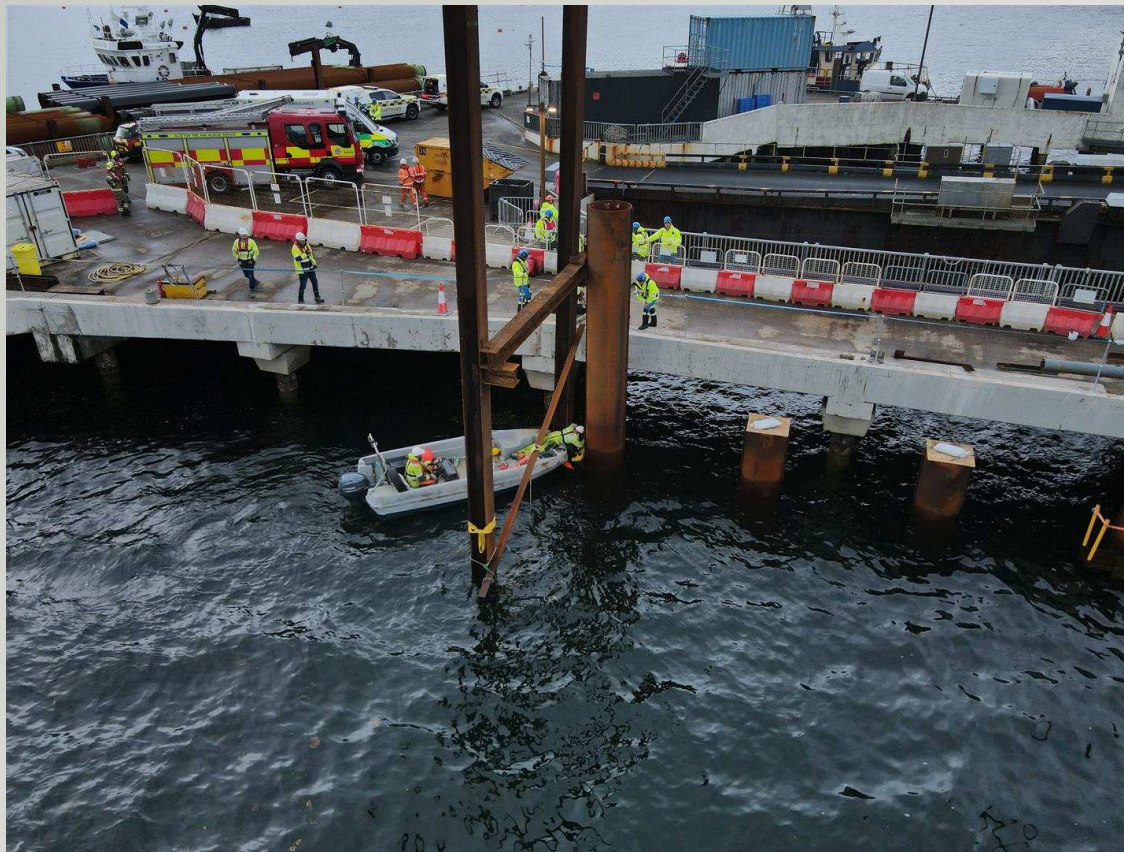


Kingsburgh Quarry





Emergency Drill – Coastguard, Ambulance and Fire Brigade





Delays to Programme / Outage Review

Delays

- **Weather – Wind, 1:10 year weather event in May**
- **Obstructions on pile lines in Fishermans Wharf and Berthing Structure**
- **Ground Conditions in Fishermans Wharf, piles not reached designed depth**

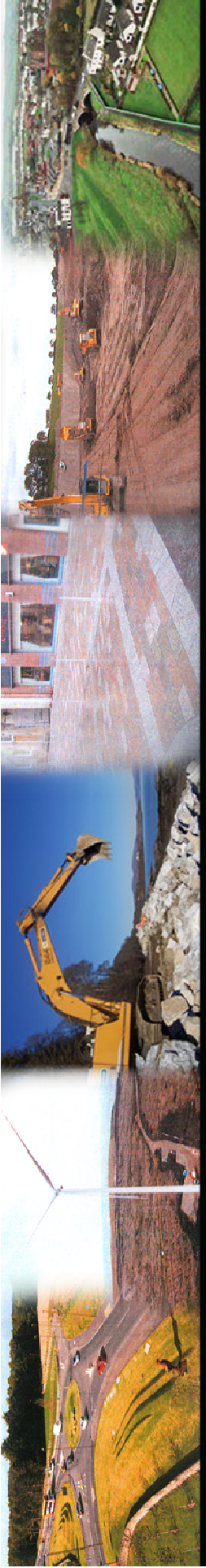
Mitigation Measures

- **Divers and workboat clearing obstructions**
- **Optimising Design with alternative solutions – Linkspan Dolphins / Bankseat**
- **Precast solutions for Linkspan Dolphins**
- **Utilising alternative plant & bridging solutions for Linkspan Dolphins / Bankseat**
- **Night Working**
- **Ground Investigation**



Community Benefit

- We have employed two local people on the site, that takes the total employed on the site and resident on Skye to four.
- Contracting with local firms and supply chain with over £400k Skye and Lochalsh.
- Engagement with schools and colleges regarding site visits, presentations, training, work experience and placements.
- STEM activities in schools.
- Staff are actively involved with school groups for Climbing, Hockey and Orienteering.
- Engaging with the job centre regarding future positions.
- Staff and the site involved with fundraising and charity events.
- 2 Student Engineers on site for summer placement.
- Additional Defibrillators on site and trained first aiders.
- Donation to RNLI Portree for Open Day





Uig Harbour Redevelopment – Any Questions?

