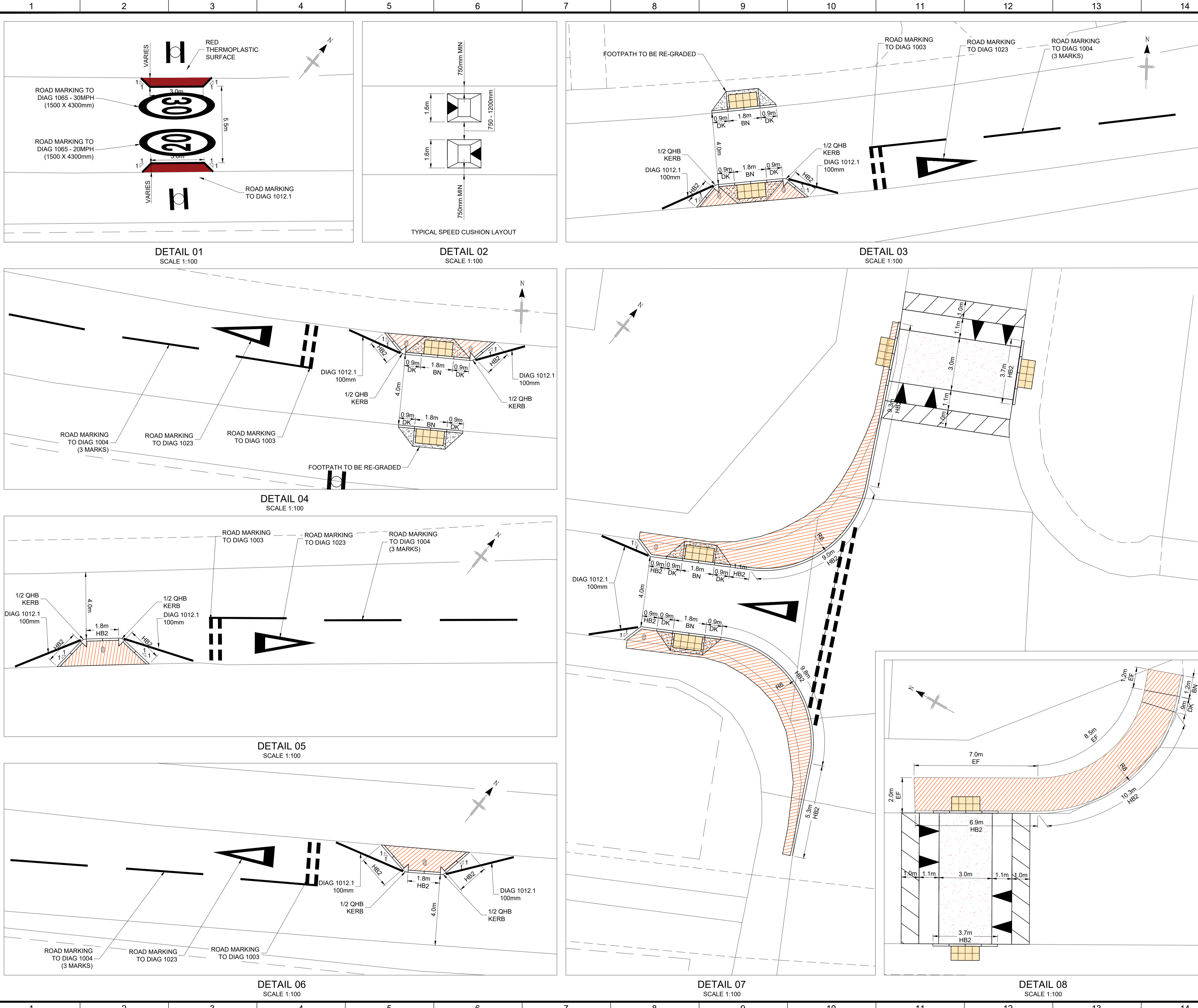


T:\001_Design Team 2\003_Small_Schemes_Projects\HAS3001 Safer Routes To School\2021 - 2022 Schemes\20 mph schemes\Invergordon\2 DRAWINGS\CAD\Live\YCHAS3012_INVERGORDON_LIVE_01.dwg 18/11/2021 ANSIA (8.50 x 11.00 inches)



COPYRIGHT, DESIGNS and PATENTS ACT 1988:
 THIS DRAWING MAY NOT BE REPRODUCED, COPIED OR USED IN ANY WAY WITHOUT THE WRITTEN PERMISSION OF THE DIRECTOR OF DEVELOPMENT AND INFRASTRUCTURE.
 © THE HIGHLAND COUNCIL
 © CROWN COPYRIGHT AND DATABASE RIGHTS 2019 OS 100023369. YOU ARE GRANTED A NON-EXCLUSIVE, ROYALTY FREE, REVOCABLE LICENCE SOLELY TO VIEW THE LICENSED DATA FOR NON-COMMERCIAL PURPOSES FOR THE PERIOD WHICH THE HIGHLAND COUNCIL MAKES IT AVAILABLE. YOU ARE NOT PERMITTED TO COPY, SUB-LICENSE, DISTRIBUTE, SELL OR OTHERWISE MAKE AVAILABLE THE LICENSED DATA TO THIRD PARTIES IN ANY FORM. THIRD PARTY RIGHTS TO ENFORCE THE TERMS OF THIS LICENCE SHALL BE RESERVED TO THE OS.

DO NOT SCALE FROM DRAWING.
 ALL DIMENSIONS ARE IN mm UNLESS OTHERWISE STATED.

- NOTES**
1. LEGEND
- RED HIGH FRICTION SURFACE
 - AREA TO BE RESURFACED
 - PROPOSED BUILD OUT SURFACE
 - TACTILE PAVING 400x400mm (BUFF)
 - TRAFFIC BOLLARD TYP EVO-N OR SIMILAR APPROVED WITH KEEP LEFT/RIGHT ARROW TO DIAG 610
- QHB - QUADRANT KERB
 HB2 - HALF BATTER KERB
 DK - DROPPER KERB
 BN - BULL NOSED KERB
 EF - EDGING KERB

CONSULTATION ISSUE

01	CONSULTATION ISSUE	CF	BS	18/11/21
REV	REVISION DETAILS	DRAWN BY	CHECK BY	DATE

The Highland Council
 Comhairle na Gàidhealtachd
INFRASTRUCTURE, ENVIRONMENT & ECONOMY
 PROJECT DESIGN UNIT
 COUNCIL BUILDINGS
 HIGH STREET
 DINGWALL IV159QN
 PHONE: 01349 868800
 E-MAIL: PDU.DT2@highland.gov.uk

PROJECT

INVERGORDON PROPOSED 20MPH SPEED LIMIT

TITLE

TRAFFIC CALMING DETAILS

	SCALE	ORIGINAL SIZE
	AS SHOWN	A1 (594 x 841)
DRAWN	CF	DATE 26/10/21
CHECKED	BS	DATE 18/11/21
PROJECT No.	YCHAS3012	
DRAWING No.	111	REVISION 01