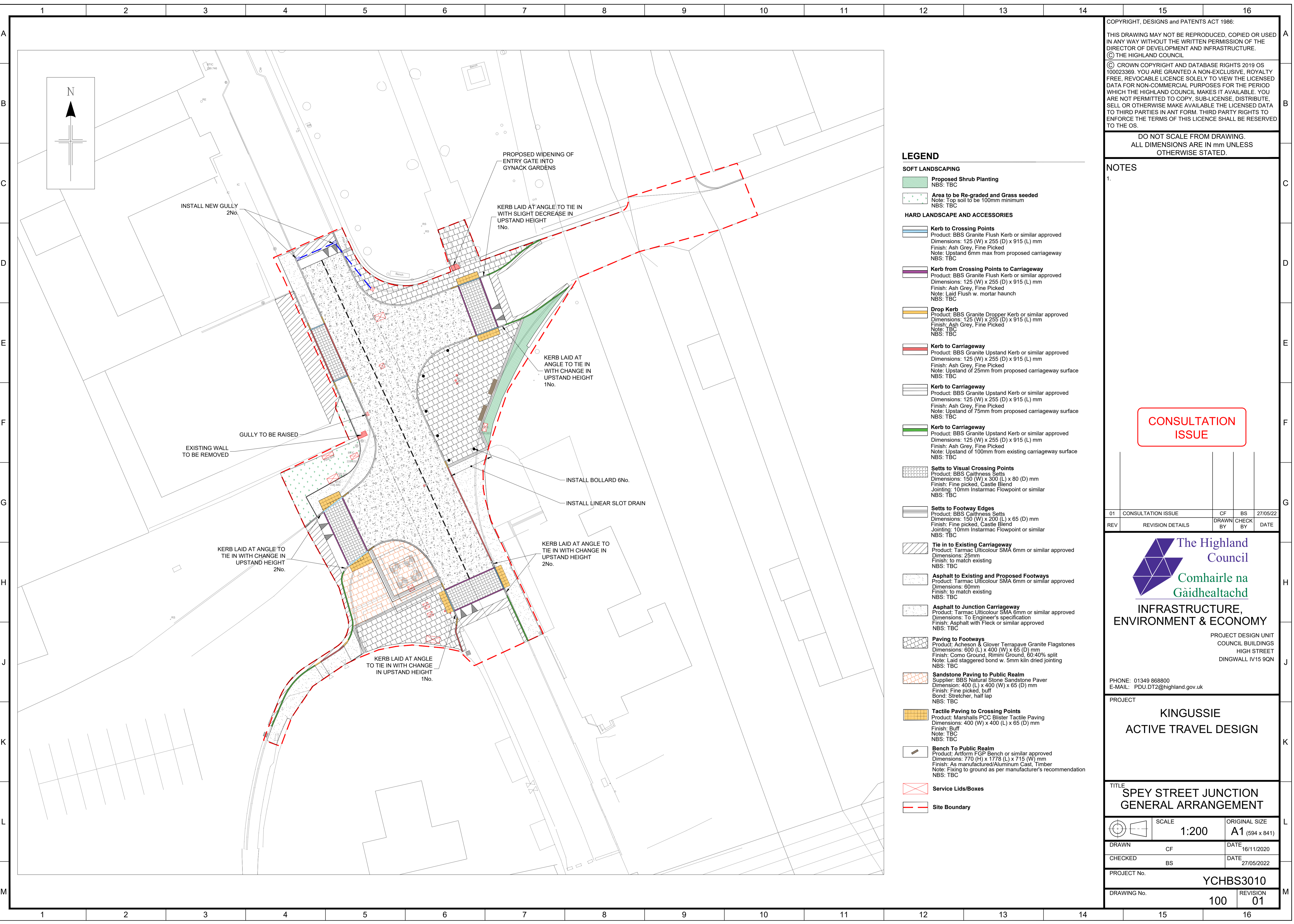


T:\001_Design Team\2003_Small_Schemes_Projects\HAS3001 Safer Routes To School\2022 - 2023 Schemes\CAD\LIVESPEY JUNCTION_LIVE_01.dwg 27/05/2022 ANSI A (8.50 x 11.00 inches)



COPYRIGHT, DESIGNS and PATENTS ACT 1988:
 THIS DRAWING MAY NOT BE REPRODUCED, COPIED OR USED IN ANY WAY WITHOUT THE WRITTEN PERMISSION OF THE DIRECTOR OF DEVELOPMENT AND INFRASTRUCTURE.
 © THE HIGHLAND COUNCIL
 © CROWN COPYRIGHT AND DATABASE RIGHTS 2019 OS 100023369. YOU ARE GRANTED A NON-EXCLUSIVE, ROYALTY FREE, REVOCABLE LICENCE SOLELY TO VIEW THE LICENSED DATA FOR NON-COMMERCIAL PURPOSES FOR THE PERIOD WHICH THE HIGHLAND COUNCIL MAKES IT AVAILABLE. YOU ARE NOT PERMITTED TO COPY, SUB-LICENSE, DISTRIBUTE, SELL OR OTHERWISE MAKE AVAILABLE THE LICENSED DATA TO THIRD PARTIES IN ANY FORM. THIRD PARTY RIGHTS TO ENFORCE THE TERMS OF THIS LICENCE SHALL BE RESERVED TO THE OS.

DO NOT SCALE FROM DRAWING.
 ALL DIMENSIONS ARE IN mm UNLESS OTHERWISE STATED.

NOTES

1.

CONSULTATION ISSUE

| | | | | |
|-----|--------------------|----------|----------|----------|
| 01 | CONSULTATION ISSUE | CF | BS | 27/05/22 |
| REV | REVISION DETAILS | DRAWN BY | CHECK BY | DATE |



The Highland Council
 Comhairle na Gàidhealtachd

**INFRASTRUCTURE,
 ENVIRONMENT & ECONOMY**

PROJECT DESIGN UNIT
 COUNCIL BUILDINGS
 HIGH STREET
 DINGWALL IV15 9QN

PHONE: 01349 868800
 E-MAIL: PDU.DT2@highland.gov.uk

PROJECT
**KINGUSSIE
 ACTIVE TRAVEL DESIGN**

TITLE
**SPEY STREET JUNCTION
 GENERAL ARRANGEMENT**

| | | |
|-------------|------------------|-----------------------|
| | SCALE | ORIGINAL SIZE |
| | 1:200 | A1 (594 x 841) |
| DRAWN | CF | DATE |
| CHECKED | BS | DATE |
| PROJECT No. | YCHBS3010 | |
| DRAWING No. | 100 | REVISION |
| | | 01 |

LEGEND

- SOFT LANDSCAPING**
- Proposed Shrub Planting**
NBS: TBC
 - Area to be Re-graded and Grass seeded**
Note: Top soil to be 100mm minimum
NBS: TBC
- HARD LANDSCAPE AND ACCESSORIES**
- Kerb to Crossing Points**
Product: BBS Granite Flush Kerb or similar approved
Dimensions: 125 (W) x 255 (D) x 915 (L) mm
Finish: Ash Grey, Fine Picked
Note: Upstand 6mm max from proposed carriageway
NBS: TBC
 - Kerb from Crossing Points to Carriageway**
Product: BBS Granite Flush Kerb or similar approved
Dimensions: 125 (W) x 255 (D) x 915 (L) mm
Finish: Ash Grey, Fine Picked
Note: Laid Flush w. mortar haunch
NBS: TBC
 - Drop Kerb**
Product: BBS Granite Dropper Kerb or similar approved
Dimensions: 125 (W) x 255 (D) x 915 (L) mm
Finish: Ash Grey, Fine Picked
Note: TBC
NBS: TBC
 - Kerb to Carriageway**
Product: BBS Granite Upstand Kerb or similar approved
Dimensions: 125 (W) x 255 (D) x 915 (L) mm
Finish: Ash Grey, Fine Picked
Note: Upstand of 25mm from proposed carriageway surface
NBS: TBC
 - Kerb to Carriageway**
Product: BBS Granite Upstand Kerb or similar approved
Dimensions: 125 (W) x 255 (D) x 915 (L) mm
Finish: Ash Grey, Fine Picked
Note: Upstand of 75mm from proposed carriageway surface
NBS: TBC
 - Kerb to Carriageway**
Product: BBS Granite Upstand Kerb or similar approved
Dimensions: 125 (W) x 255 (D) x 915 (L) mm
Finish: Ash Grey, Fine Picked
Note: Upstand of 100mm from existing carriageway surface
NBS: TBC
 - Setts to Visual Crossing Points**
Product: BBS Calthness Setts
Dimensions: 150 (W) x 300 (L) x 80 (D) mm
Finish: Fine picked, Castle Blend
Jointing: 10mm Instarmac Flowpoint or similar
NBS: TBC
 - Setts to Footway Edges**
Product: BBS Calthness Setts
Dimensions: 150 (W) x 200 (L) x 65 (D) mm
Finish: Fine picked, Castle Blend
Jointing: 10mm Instarmac Flowpoint or similar
NBS: TBC
 - Tie in to Existing Carriageway**
Product: Tarmac Ultracolor SMA 6mm or similar approved
Dimensions: 25mm
Finish: to match existing
NBS: TBC
 - Asphalt to Existing and Proposed Footways**
Product: Tarmac Ultracolor SMA 6mm or similar approved
Dimensions: 60mm
Finish: to match existing
NBS: TBC
 - Asphalt to Junction Carriageway**
Product: Tarmac Ultracolor SMA 6mm or similar approved
Dimensions: To Engineer's specification
Finish: Asphalt with Fleck or similar approved
NBS: TBC
 - Paving to Footways**
Product: Acheson & Glover Terrapave Granite Flagstones
Dimensions: 600 (L) x 400 (W) x 65 (D) mm
Finish: Como Ground, Rimini Ground, 60:40% split
Note: Laid staggered bond w. 5mm kiln dried jointing
NBS: TBC
 - Sandstone Paving to Public Realm**
Supplier: BBS Natural Stone Sandstone Paver
Dimension: 400 (L) x 400 (W) x 65 (D) mm
Finish: Fine picked, buff
Bond: Stretcher, half lap
NBS: TBC
 - Tactile Paving to Crossing Points**
Product: Marshalls PCC Blister Tactile Paving
Dimensions: 400 (W) x 400 (L) x 65 (D) mm
Finish: Buff
Note: TBC
NBS: TBC
 - Bench To Public Realm**
Product: Artform FGP Bench or similar approved
Dimensions: 770 (H) x 1778 (L) x 715 (W) mm
Finish: As manufactured/Aluminum Cast, Timber
Note: Fixing to ground as per manufacturer's recommendation
NBS: TBC
 - Service Lids/Boxes**
 - Site Boundary**