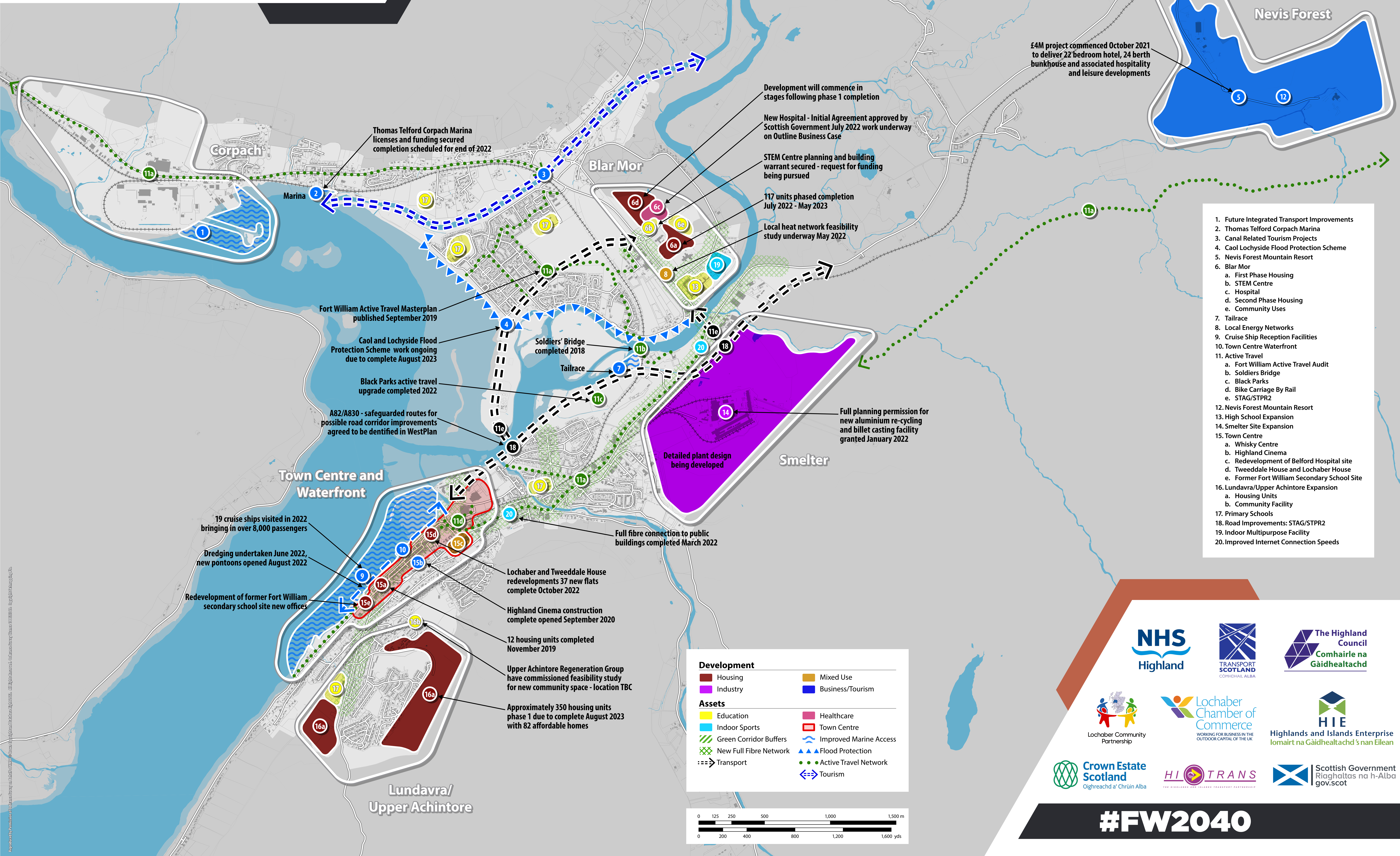


# FW2040

A Masterplan and Delivery Programme for Fort William and Lochaber



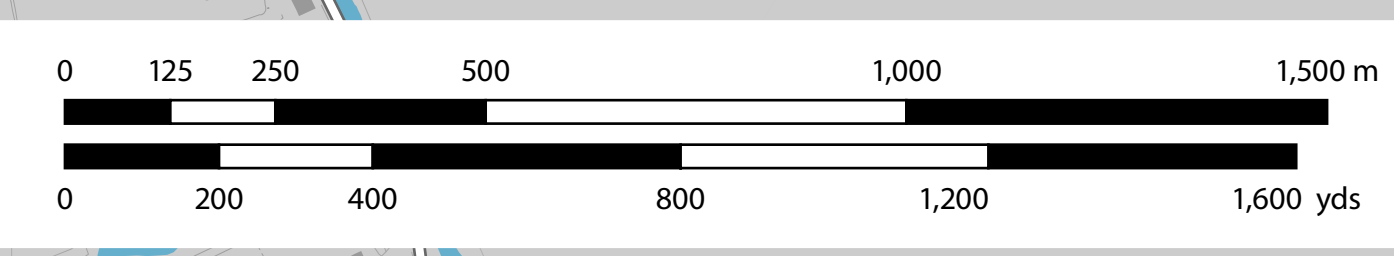
1. Future Integrated Transport Improvements
2. Thomas Telford Corpach Marina
3. Canal Related Tourism Projects
4. Caol Lochside Flood Protection Scheme
5. Nevis Forest Mountain Resort
6. Blar Mor
  - a. First Phase Housing
  - b. STEM Centre
  - c. Hospital
  - d. Second Phase Housing
  - e. Community Uses
7. Tailrace
8. Local Energy Networks
9. Cruise Ship Reception Facilities
10. Town Centre Waterfront
11. Active Travel
  - a. Fort William Active Travel Audit
  - b. Soldiers Bridge
  - c. Black Parks
  - d. Bike Carriage By Rail
  - e. STAG/STPR2
12. Nevis Forest Mountain Resort
13. High School Expansion
14. Smelter Site Expansion
15. Town Centre
  - a. Whisky Centre
  - b. Highland Cinema
  - c. Redevelopment of Belford Hospital site
  - d. Tweeddale House and Lochaber House
  - e. Former Fort William Secondary School Site
16. Lundavra/Upper Achintore Expansion
  - a. Housing Units
  - b. Community Facility
17. Primary Schools
18. Road Improvements: STAG/STPR2
19. Indoor Multipurpose Facility
20. Improved Internet Connection Speeds

**Development**

- Housing
- Industry
- Mixed Use
- Business/Tourism

**Assets**

- Education
- Indoor Sports
- Green Corridor Buffers
- New Full Fibre Network
- Transport
- Healthcare
- Town Centre
- Improved Marine Access
- ▲ Flood Protection
- Active Travel Network
- ⇄ Tourism



#FW2040