



# Uig Harbour Redevelopment



Community Liaison Meeting  
20<sup>th</sup> October 2022





## Summary of Works – since last meeting

- **Rock Armour to Marshalling Area**
- **Installation of drainage in Marshalling Area**
- **Continue piling combi wall to Berthing structure**
- **Driving of tubular piles on Approachway**
- **Dynamic testing of Approachway piles**
- **Steelfixers tying the pile cages and wave walls**
- **Removal of obstruction from pile line**
- **Blast in Kingsburgh Quarry today**



## Planned Works

- **Rock & Aggregate delivery from Kingsburgh Quarry to Marshalling Area**
- **Terminal Building Piling in reclamation area**
- **Continue Piling to Berthing Structure using Marine Plant**
- **Continue Piling to Approachway using Marine Plant**
- **Fill to Berthing Structure**
- **Drainage to Marshalling Area**
- **Concrete Repairs to Pierhead**
- **Removal of existing boat steps**
- **Setup 30m barge and gangway for berthing / access / egress**



## Fishermans Wharf – Reclamation Area and Sheet Piling



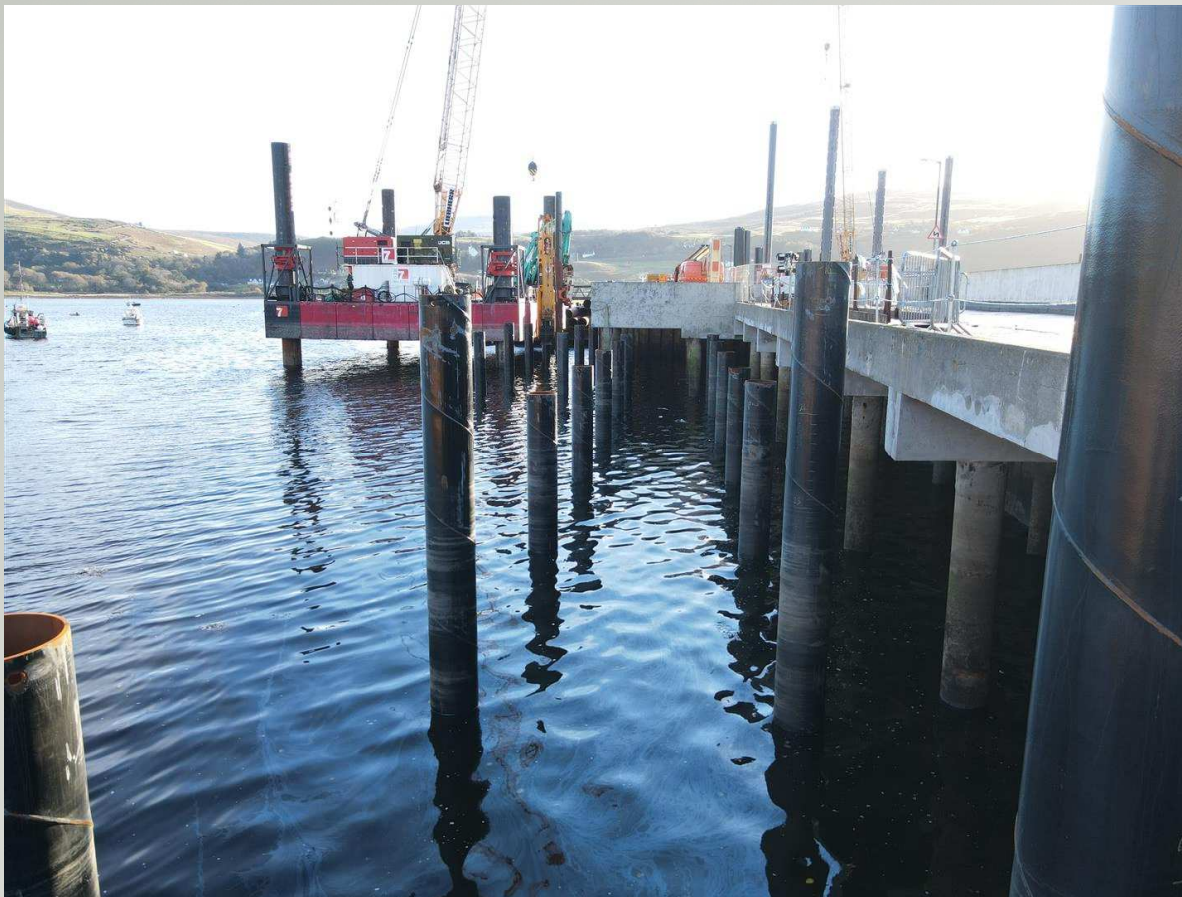


## Fishermans Compound – Rock Armour



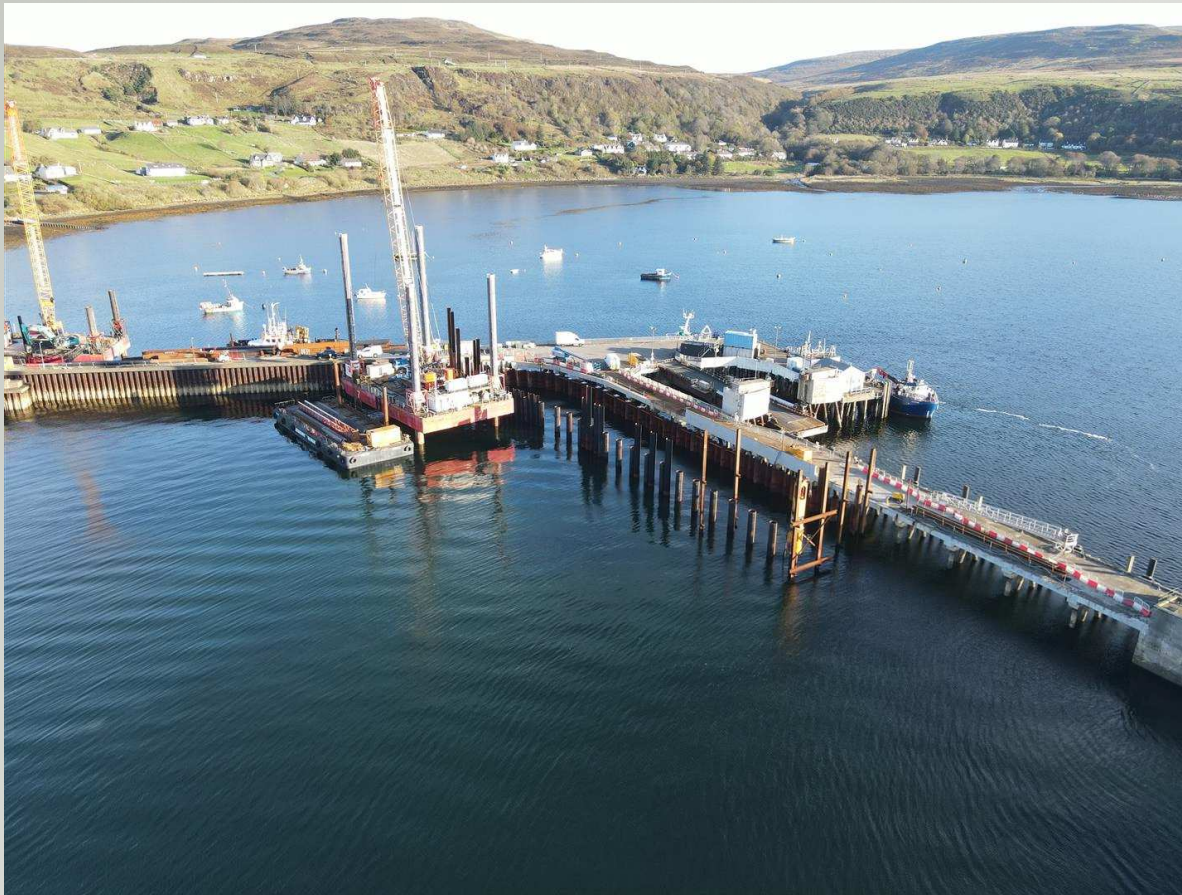


## Approachway Widening – Piling



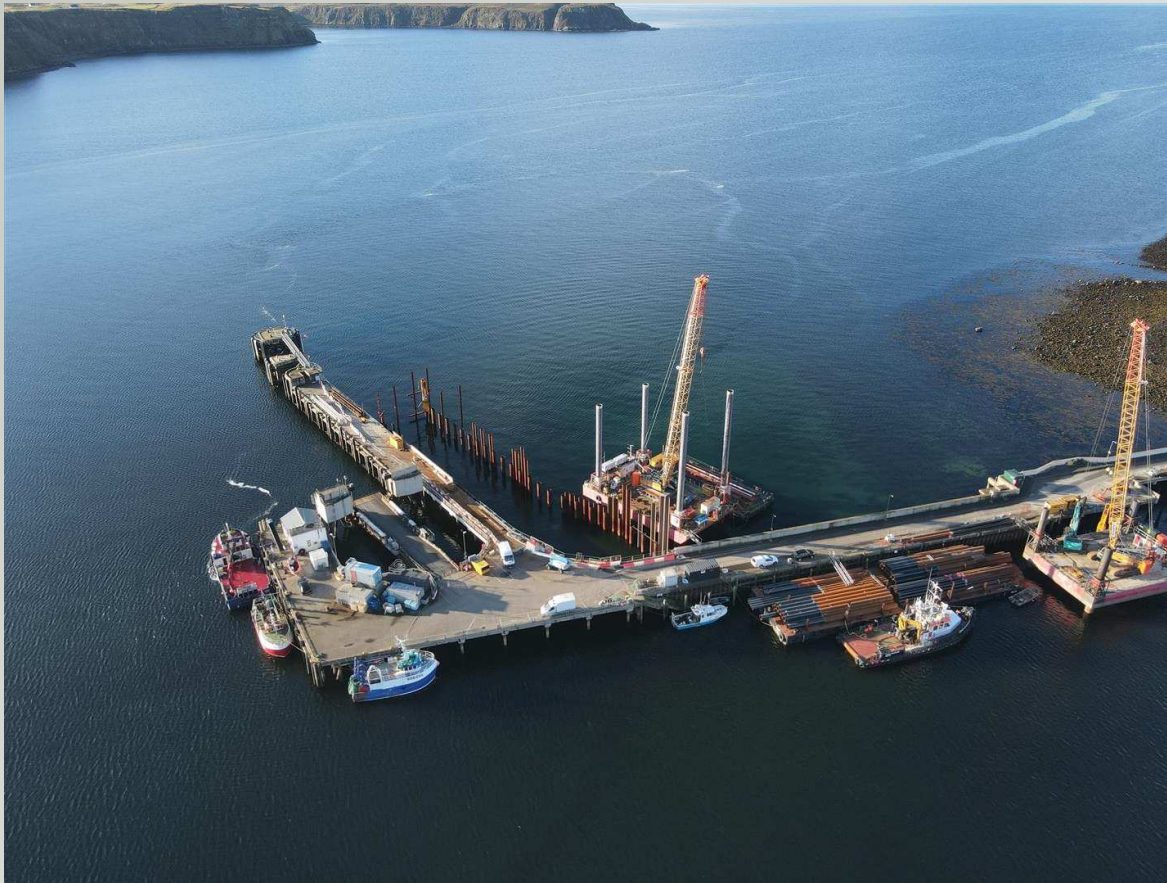


## Piling to Berthing Area – Jackup, Pile Barge





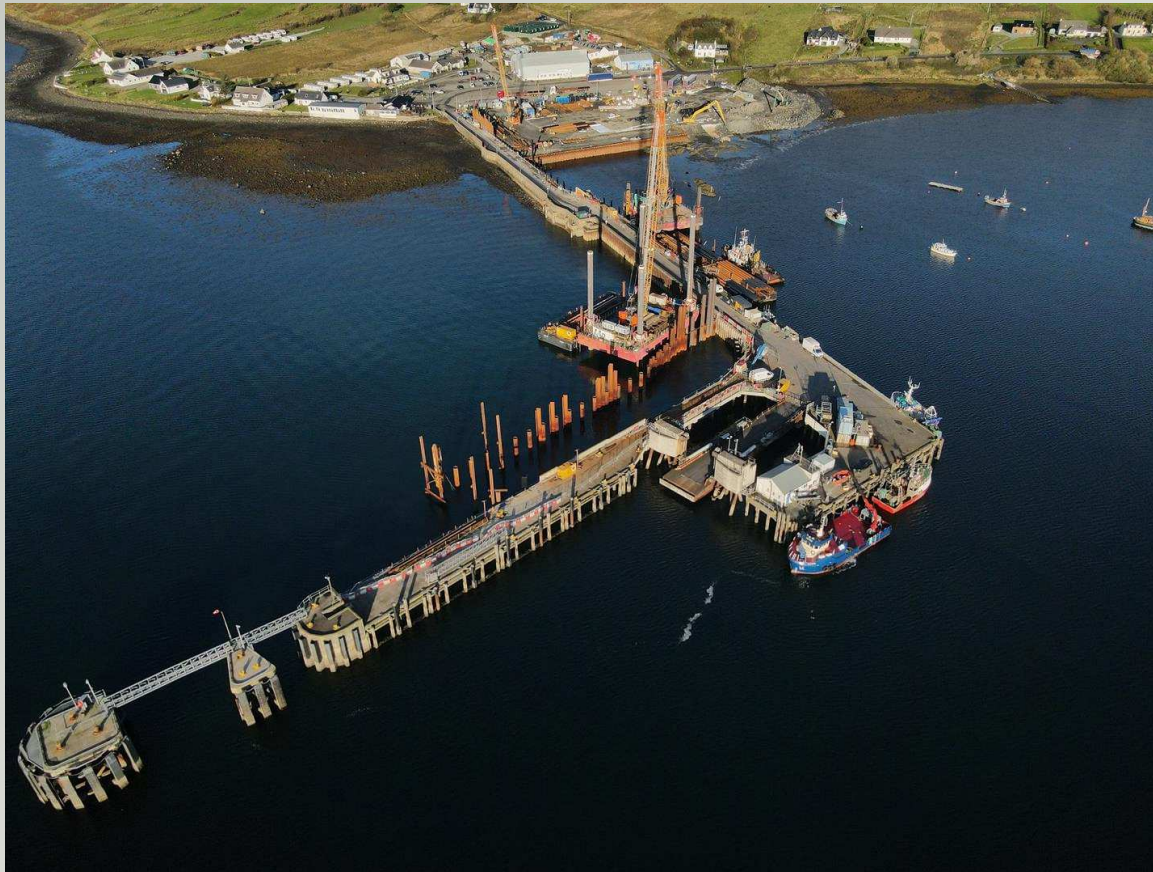
## Piling to Berthing Area – Jackup, Pile Barge







## Piling to Berthing Area – Tie in with existing structure





## Delays to Programme / Outage Review

### Delays

- Weather – Wind, 1:10 year weather event in May
- Obstructions on pile lines in Fishermans Wharf and Berthing Structure
- Ground Conditions in Fishermans Wharf, piles not reached designed depth
- Approachway Piles – piles did not reach full depth due to hard driving

### Mitigation Measures

- Divers and workboat clearing obstructions
- Optimising Design with alternative solutions – Linkspan Dolphins / Bankseat
- Precast solutions for Linkspan Dolphins
- Utilising alternative plant & bridging solutions for Linkspan Dolphins / Bankseat



## Revised Outage Proposal – 2 stage

### First Outage – 16<sup>th</sup> January - 13<sup>th</sup> March 2023 for 8 weeks

- Removal of deck slab behind existing bankseat to facilitate the construction of the new bankseat
- Piling of Linkspan Bankseat
- Piling of Linkspan Dolphins
- Piling of fender sockets
- Piling of roundhead
- Installation of 2 protection piles
- Installation of temporary bridge spanning over new linkspan



## Revised Outage Proposal – 2 stage

**Second Outage – 30<sup>th</sup> October - 11<sup>th</sup> December 2023 for 6 weeks**

- Removal of existing linkspan, dolphins & bankseat
- Installation of fender piles and fenders
- Installation and commissioning of new linkspan

The 2 staged proposal reduces the overall outage period by 10 weeks and avoids any holiday periods.



## Community Benefit

- We have employed five local people on the site, that takes the total employed on the site and resident on Skye to seven.
- Contracting with firms and supply chain with over £500k Skye and Lochalsh.
- Estimated local spend £160,000
- Engagement with schools, talks and business breakfasts to Kilmuir, Plockton and Portree
- Staff are actively involved with school groups for Climbing, Hockey and Orienteering.
- Engaging with the job centre regarding future positions.
- Staff and the site involved with fundraising and charity events.
- Donation for Christmas Presents for Uig Community Children
- Donation to RNLI Portree for Open Day, quarry material for Skye Mountain Rescue & Kingsburgh Forest Trust
- Work Placement for a School leaver



## Uig Harbour Redevelopment – Any Questions?

