



# Uig Harbour Redevelopment



Community Liaison Meeting  
24<sup>th</sup> November 2022





## **Summary of Works – since last meeting**

- **Rock Armour & Fill To Marshalling Area**
- **Installation Of Drainage In Marshalling Area**
- **Continue Piling Combi Wall To Berthing Structure**
- **Driving Of Tubular Piles On Approachway**
- **Dynamic & Static Testing Of Approachway Piles**
- **Steelfixers Tying The Pile Cages And Wave Walls**
- **Tie Rods On Berthing Structure**
- **Rockfill To Berthing Structure**
- **Mobilise & Commission Batching Plant**
- **Wave Wall To Marshalling Area**
- **Fabrication Of Temp Piles And Temporary Bridge**
- **Removal Of Boat Steps**
- **Provision Of A Barge For Mooring Of Vessels**





## **Planned Works – up to Festive Break**

- **Rock & Aggregate Delivery From Kingsburgh Quarry To Pier**
- **Terminal Building Piling In Reclamation Area ( Spring 2023 )**
- **Continue Piling To Berthing Structure Using Marine Plant**
- **Crushing Plant Mobilised To Kingsburgh**
- **Concrete Repairs To Pierhead ( Spring 2023 )**
- **Removal Of Existing Concrete Boat Steps**
- **Further Static Load Tests On Approachway Piles ( possible nightshift )**
- **Further Pile Delivery by Barge**
- **Mobilisation of 300 tonne Crane for Outage Period**
- **Mobilisation of Dredger**





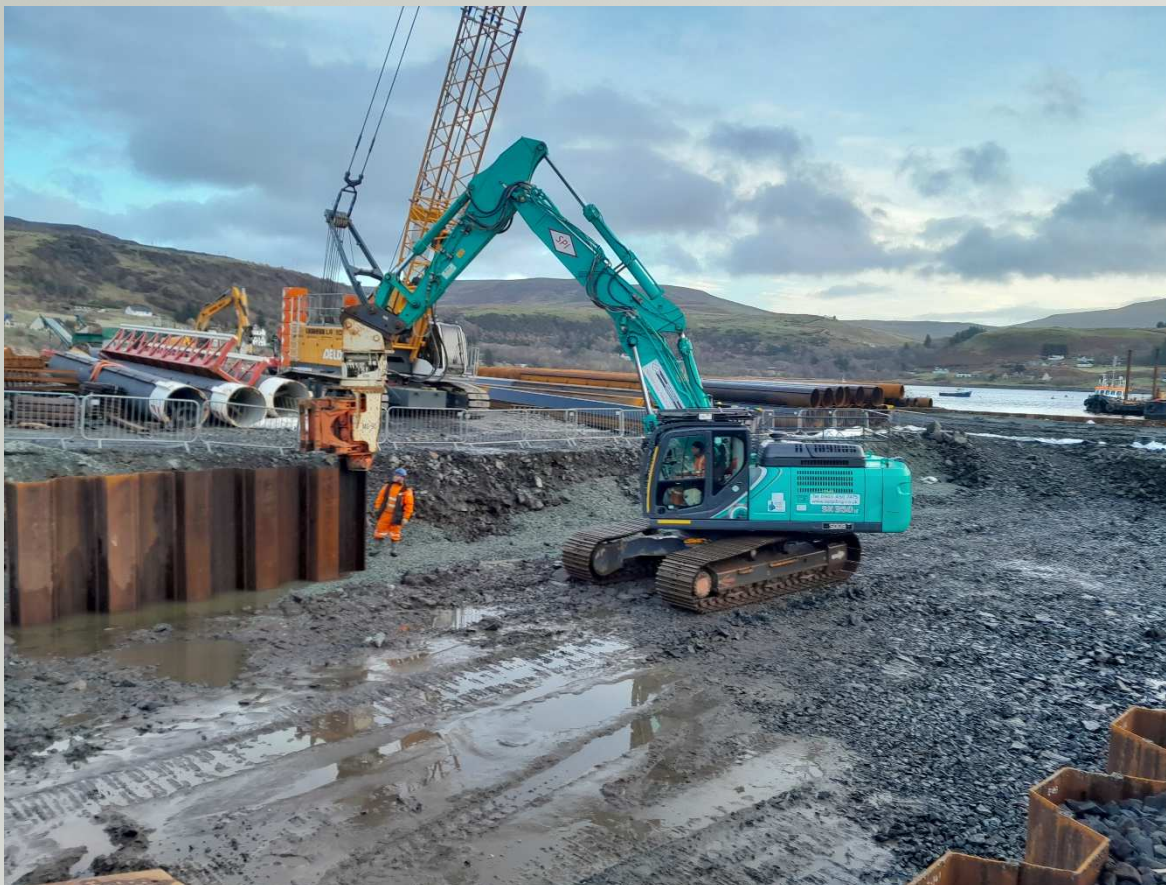
## Fishermans Wharf – Reclamation Area and Sheet Piling & Rock Armour







## Fishermans Compound – Anchor Wall







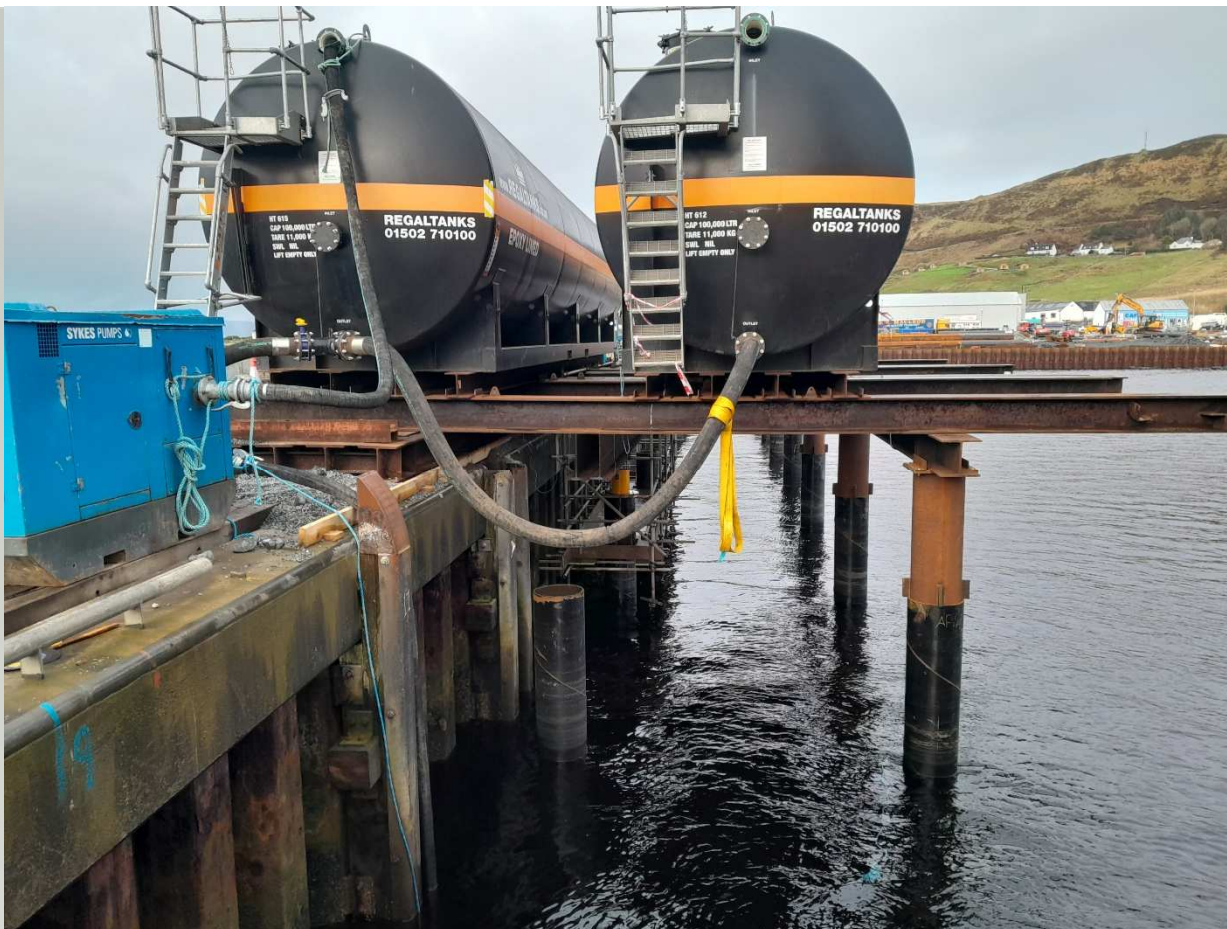
## Concrete Batching Plant







## Approachway – Static Load Test on Tubular Pile







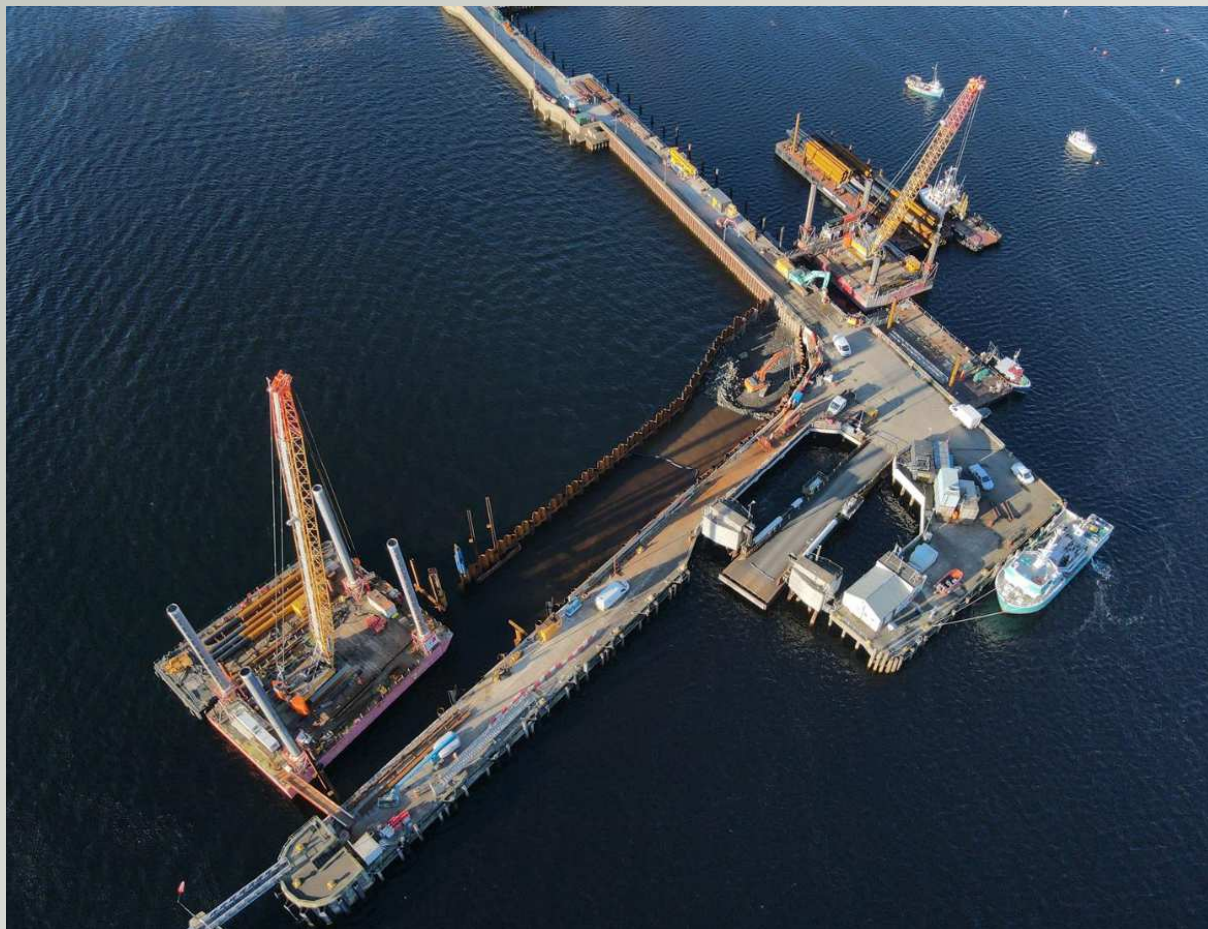
## Approachway Widening – Removal of Concrete Steps ( Recycled ) & Barge for berthing







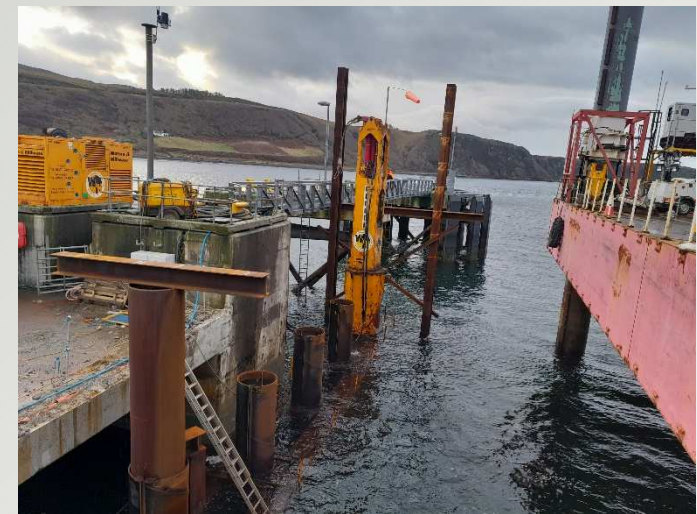
## Piling to Berthing Area – Jackup, Pile Barge







## Piling to Berthing Area – Jackup, Pile Barge







## **Delays to Programme / Outage Review**

### **Delays**

- **Weather – Wind, 1:10 year weather event in May**
- **Obstructions on pile lines in Fishermans Wharf and Berthing Structure**
- **Ground Conditions in Fishermans Wharf, piles not reached designed depth**
- **Approachway Piles – piles did not reach full depth due to hard driving**

### **Mitigation Measures**

- **Divers and workboat clearing obstructions**
- **Optimising Design with alternative solutions – Linkspan Dolphins / Bankseat**
- **Precast solutions for Linkspan Dolphins**
- **Utilising alternative plant & bridging solutions for Linkspan Dolphins / Bankseat**





## Temporary Bridge







## **Revised Outage Proposal – 2 stage**

### **First Outage – 16<sup>th</sup> January - 13<sup>th</sup> March 2023 for 8 weeks**

- Removal of deck slab behind existing bankseat to facilitate the construction of the new bankseat
- Piling of Linkspan Bankseat
- Piling of Linkspan Dolphins
- Piling of fender sockets
- Piling of roundhead
- Installation of 2 protection piles
- Installation of temporary bridge spanning over new linkspan





## **Revised Outage Proposal – 2 stage**

### **Second Outage – 30<sup>th</sup> October - 11<sup>th</sup> December 2023 for 6 weeks**

- Removal of existing linkspan, dolphins & bankseat
- Installation of fender piles and fenders
- Installation and commissioning of new linkspan

The 2 staged proposal reduces the overall outage period by 10 weeks and avoids any holiday periods.





## Community Benefit

- We have employed five local people on the site, that takes the total employed on the site and resident on Skye to seven.
- Contracting with firms and supply chain with over £600k Skye and Lochalsh.
- Estimated local spend £190,000
- Engagement with schools, talks and business breakfasts to Kilmuir, Plockton and Portree
- Staff are actively involved with school groups for Climbing, Hockey and Orienteering.
- Engaging with the job centre regarding future positions.
- Staff and the site involved with fundraising and charity events.
- Donation for Christmas Presents for Uig Community Children
- Donation to RNLI Portree for Open Day, quarry material for Skye Mountain Rescue & Kingsburgh Forest Trust
- Work Placement for a School leaver

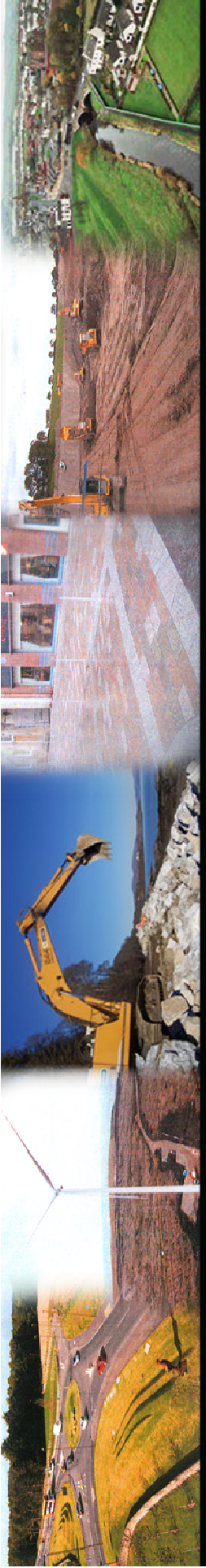




## Kilmuir Primary – Civil Engineering & Uig Harbour Redevelopment Talk











## Uig Harbour Redevelopment – Any Questions?

