

# Uig Harbour Redevelopment

Community Liaison Meeting

23<sup>rd</sup> February 2023



# Time-Lapse Video



# Summary of Works – Since last meeting

<b>Marshalling Area</b>	<b>Approachway</b>	<b>Bankseat</b>	<b>Linkspan</b>	<b>Berthing Structure</b>
Rock Armouring	Pile Plug Works	Diving	Tubular Pile Installs	Fender Removal
Capping beam installation	Coring Works	Deck Removal	Seabed Clearance	Rock Infill
Wave Wall Construction	Scabbling	Sheet Pile Installation	Tubular Pile Installs	Tie rod installation
				Combi-Wall Installation



# Planned Works – Outage Period

Section	Planned Vs Completed 16th January - 13th March	% Completed
Marshalling Area	Installation of Colvert A87	60
Approachway	N/A	N/A
Bankseat	Removal of 100m2 of existing concrete Deck	100
	Pile Cutting Works	100
	Seabed Clearance	100
	Sheet Pile Installation	60
	UW Concrete & Infill Works	0
	Temporary Bridge Installation	20
Linkspan	Seabed Clearance	100
	Installation of tubular piles	70
	Steel Bracing	0
Berthing Structure	Removal of existing Panel Fenders	100
	Removal of existing greenheart fenders	100
	Installation of 7no Fender Pile Socket	0
	Installation of Combi Wall at Roundhead	80
	Installation 2no protection piles	0
	Installation of tie rods and Infill	100
Dredging	Berthing Line	100
	Roundhead	20
Kingsburgh Quarry	N/A	N/A

Outage Timeline	56	100.00%
Days Complete	39	69.64%
Days Remaining	17	30.36%

# Marshalling Area



- Wave Wall Construction
- Importing of aggregate
- Capping Beam Installation
- Service Routes – Drainage/Ducts
- Road Crossing
- SSE Sub-Station Installation
- Steelfixing
- Pre-cast Storage

# Approachway



Pumping out of Piles

Infilling of Piles with Aggregate

Arrival of pre-cast concrete units

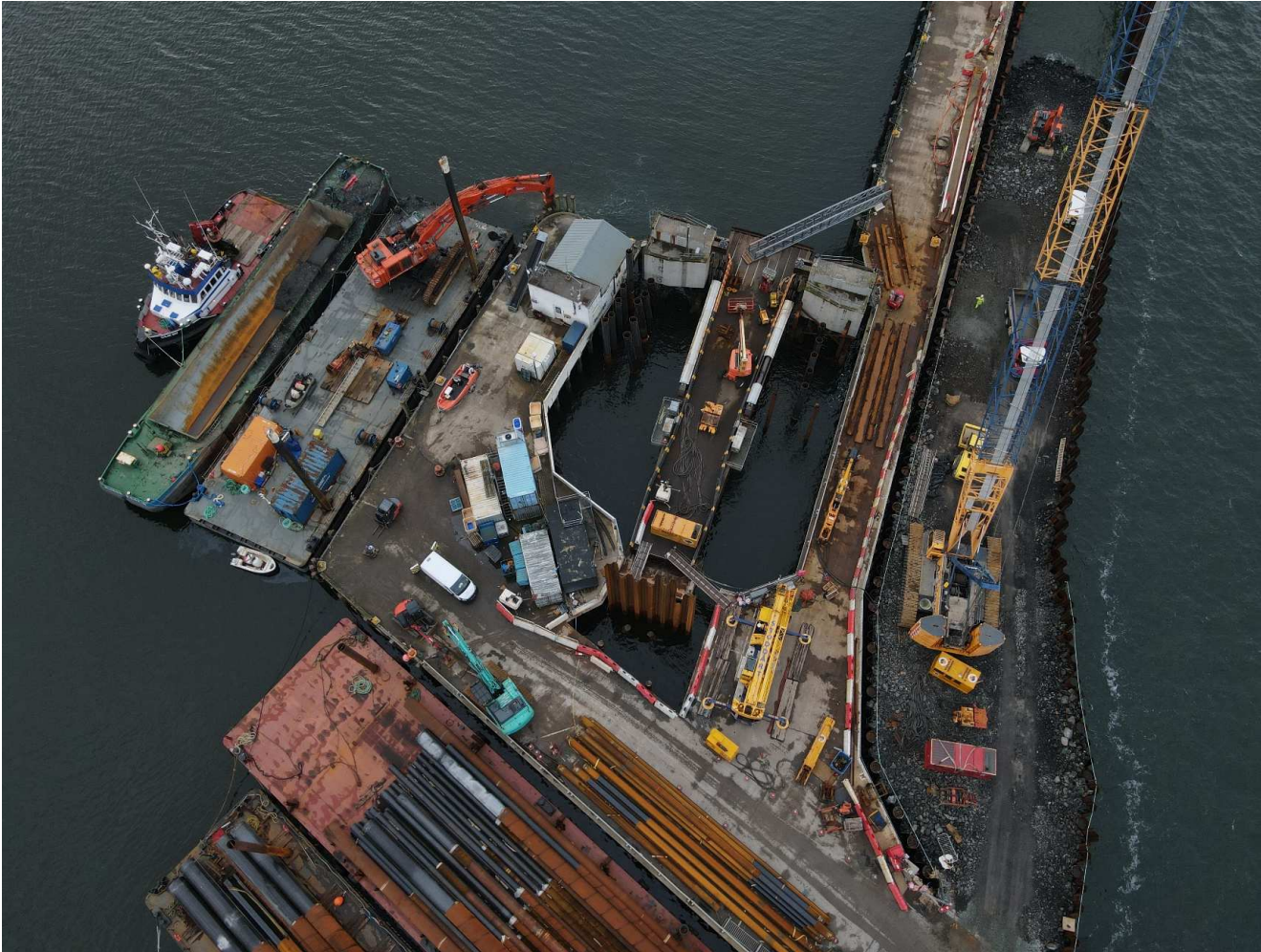
Concrete Scabbling

450 core holes drilled

Place rebar cages & place concrete to pile  
plugs

Placement of pre-cast concrete units

# Bankseat



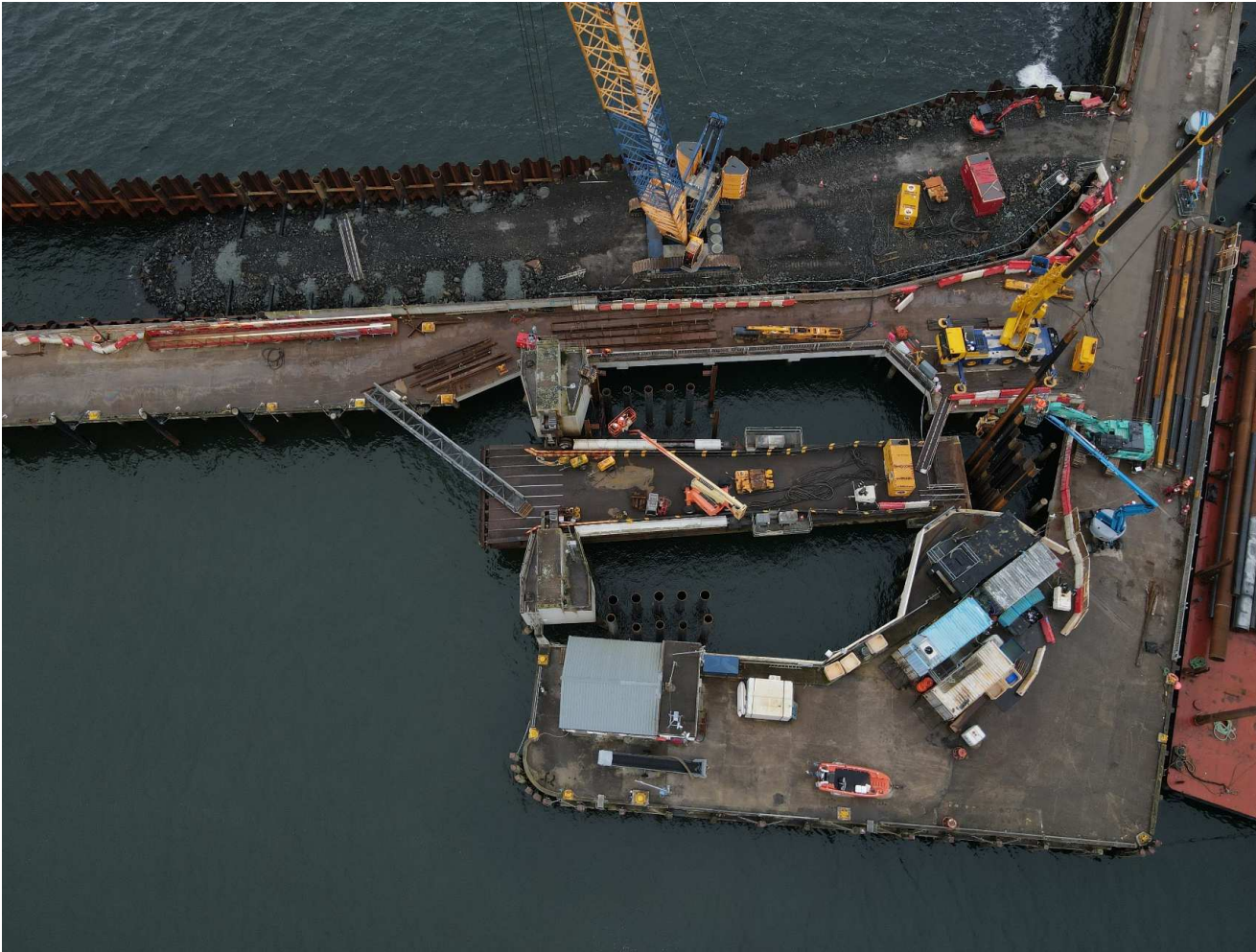
Concrete Deck Removed 100m<sup>2</sup>  
9no existing piles cut - Underwater  
Seabed Clearing  
Installation of sheet piles 60% complete  
Temporary Bridge

UW Concrete

Infill

Reinforcement & concrete works

# Linkspan

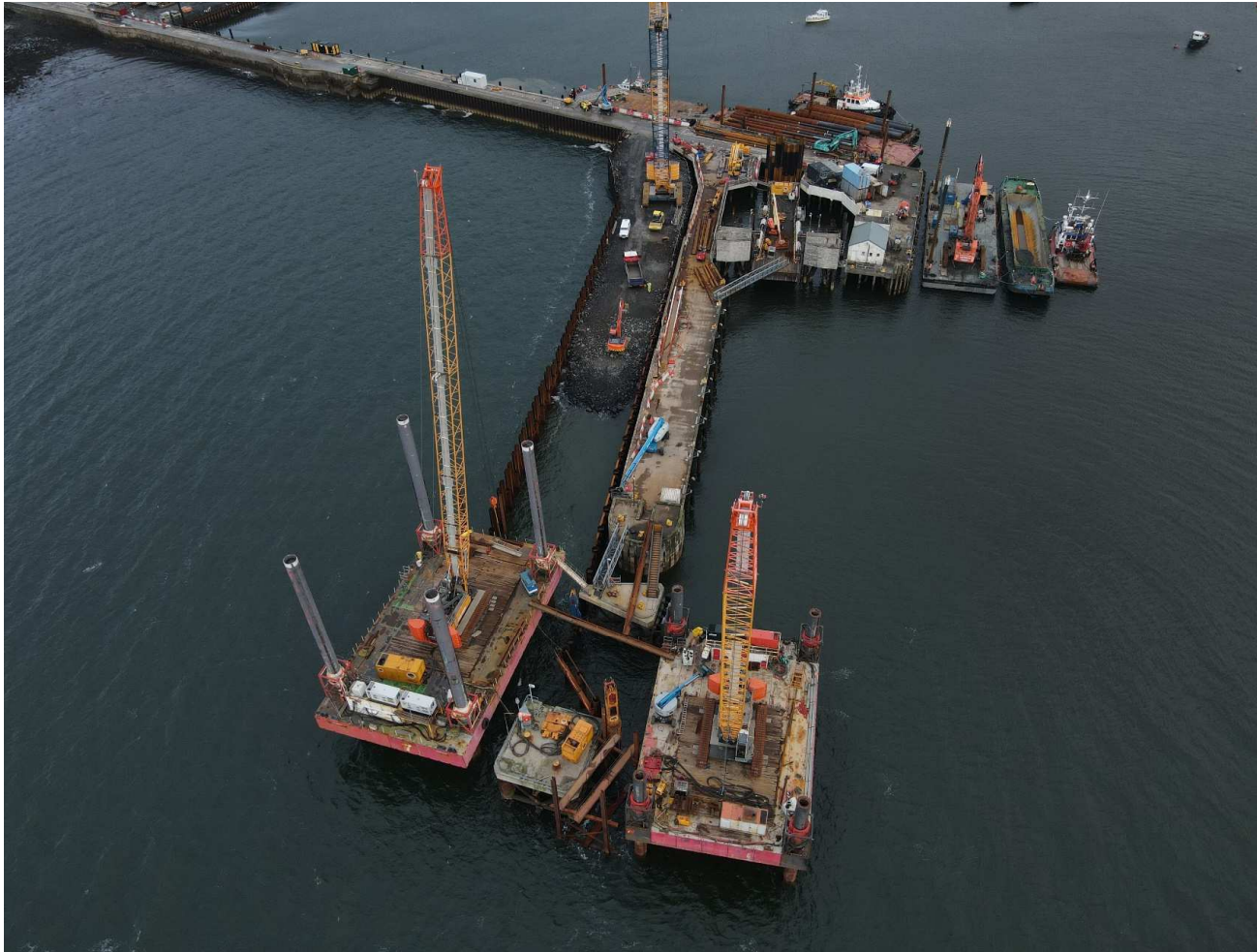


- Seabed Clearance
- Installation of raking piles
- Installation of vertical piles
- Bracing steelwork

- Placement of pre-cast concrete units
- Reinforcement & concrete



## Berthing Structure



Infill of aggregate

Combi Wall installation

Rerouting of services

Removal of existing fenders

Delivery of Fender components

Installation of fenders

# Dredging



Dredging of berthing face

Outer bay dredging

Roundhead

# Kingsburgh Quarry



Rock processing – armour/infill

Exporting of 6A material

## Community Benefits

- Contracting with firms and supply chain with over £750k Skye and Lochalsh.
- Estimated local spend £220,000
- Engagement with schools, talks and business breakfasts to Kilmuir, Staffin, Plockton and Portree. Site visit by Portree High School
- Staff are actively involved with school groups for Climbing, Hockey and Orienteering.
- Engaging with the job centre regarding future positions.
- Staff and the site involved with fundraising and charity events.
- Donation for Christmas Presents for Uig Community Children.
- Donation to RNLI Portree for Open Day, quarry material for Skye Mountain Rescue & Kingsburgh Forest Trust.
- Work Placement for a School leaver.

# Uig Harbour Redevelopment- Any Questions?

