

# Uig Harbour Redevelopment

Community Liaison Meeting

15<sup>th</sup> June 2023



# Summary of Works – Since last meeting

Marshalling Area	Approachway	Linkspan/Bankseat	Berthing Structure	Pierhead	Kingsburgh Quarry
<p>Capping Beam Installation            Installation of Ducting and Drainage routes            Installation of the Electrical Distribution Kiosk            Deliveries and Storage of Pre-cast elements</p>	<p>Approachway Piling Complete            Pile plugs installed            Installation of pre-cast cross-heads and edgebeams</p>	<p>Bankseat Stage 1 Pour Complete            East and West Dolphins Installed</p>	<p>Piling Works Complete            Infill of New Berthing Structure            Tie-Rod Installation            Stage 1 Rock Armour installed</p>	<p>Concrete repair works            liaison</p>	<p>Rock processing Armour/infill            Exporting of 6A material</p>

# Planned Works – Outage 2

## 30/10/23-11/12/23

- |  |
|--|
| • Removal of the existing Linkspan                   |
| • Demolition of 2no lifting dolphins                 |
| • Extraction of existing piles                       |
| • Removal of 2no protection piles                    |
| • Remove existing fenders                            |
| • Installation of new fenders                        |
| • Installation and commissioning of the new Linkspan |

## Marshalling Area



- Capping Beam Installation
- Installation of Ducting and Drainage
- Installation of the Electrical Distribution Kiosk
- Deliveries and Storage of Pre-cast elements



# Approachway



- Approachway Piling Complete
- Pile plugs installed
- Installation of pre-cast cross-heads and edgebeams

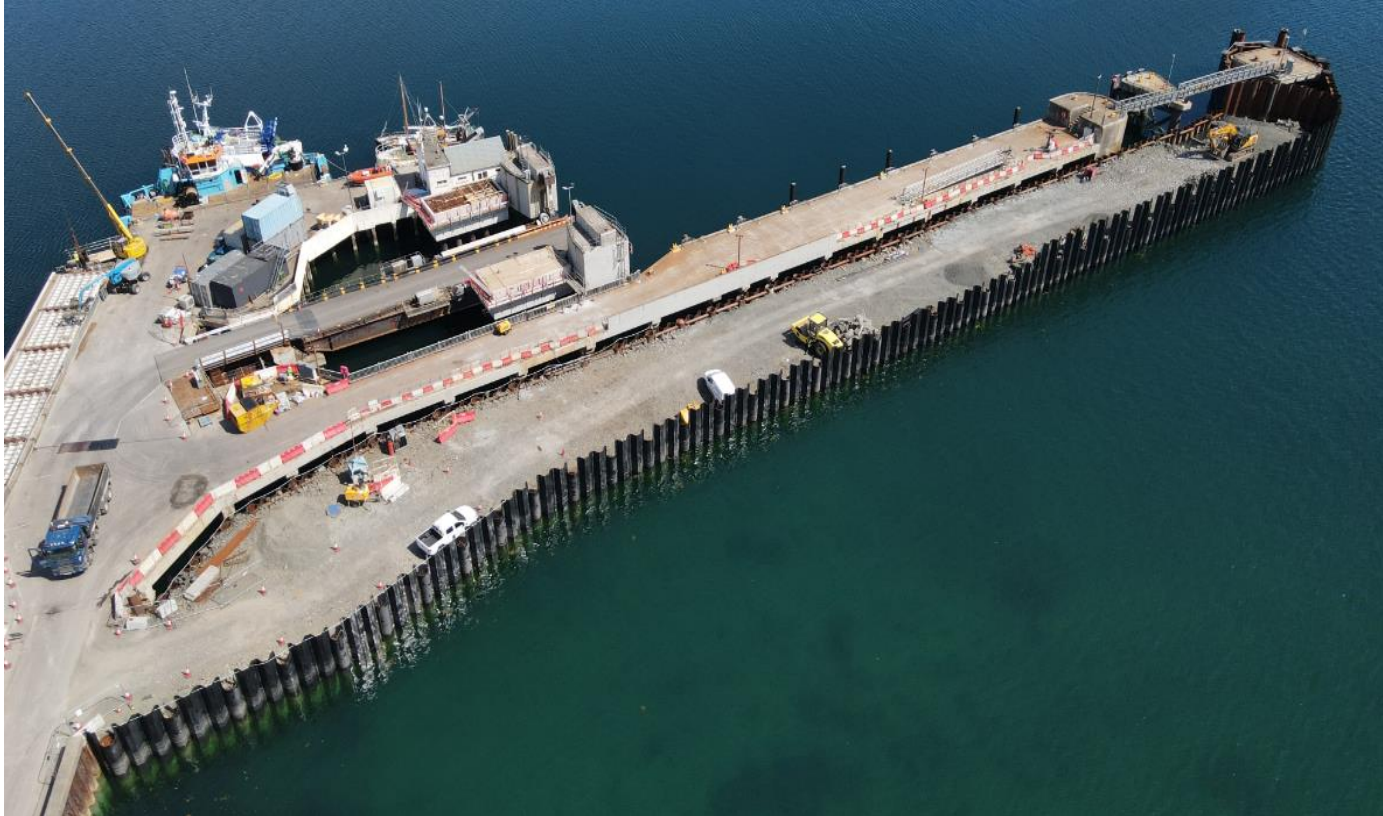
# Linkspan/Bankseat



- Bankseat Stage 1 Pour Complete
- East and West Dolphins Installed

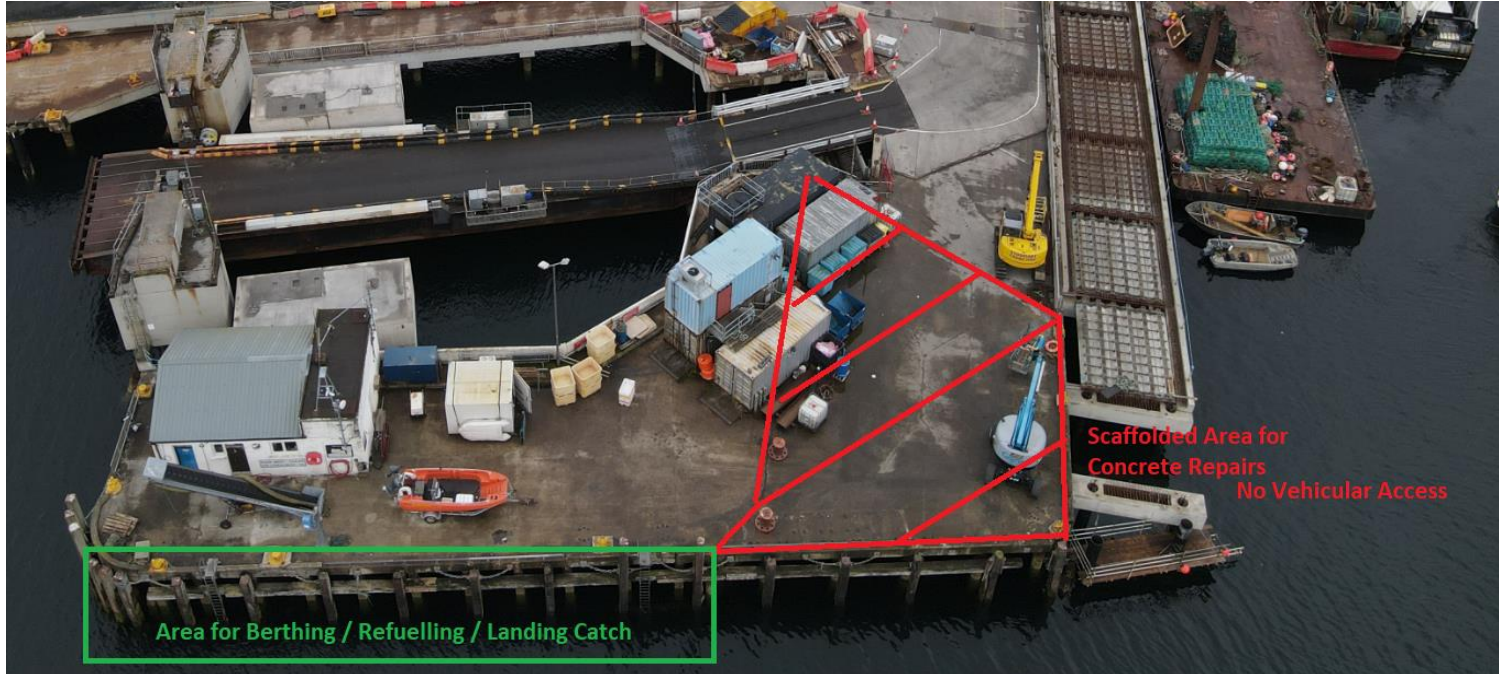


# Berthing Structure

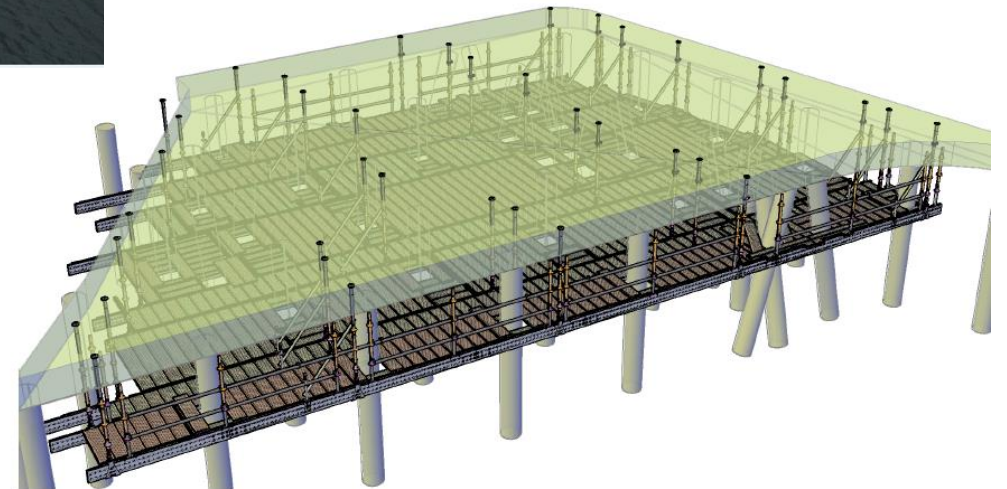


- Piling Works Complete
- Infill of New Berthing Structure
- Tie-Rod Installation
- Stage 1 Rock Armour installed

# Pierhead



- Concrete repair works liaison.





# Kingsburgh Quarry



Rock processing – Armour/infill

Exporting of 6A material

## Planned works

- Complete Install of Precast on Approachway and Pierhead
- Completion of Tie Rods and Bulk Fill to Berthing Structure
- Phase 2 of Rock Armour to Berthing Structure
- Completion of Bankseat Concrete Works
- Installation of Fenders on Approachway
- Completion of Drainage and Ducting to Marshalling Area
- Installation of Concrete Dry Berth
- Demobilise Remainder of Marine Plant

## Community Benefits

- Contracting with firms and supply chain with over £1M Skye and Lochalsh.
- Estimated local spend £300,000
- Engagement with schools, talks and business breakfasts to Kilmuir, Staffin, Plockton and Portree
- Staff are actively involved with school groups for Climbing, Hockey and Orienteering.
- Engaging with the job centre regarding future positions.
- Staff and the site involved with fundraising and charity events.
- Sponsored Schools Orienteering Competition
- Employed Student Engineer on Site
- STEM events at Plockton High School
- Site visit by Portree High School
- CLG Site Visit



Any Questions

