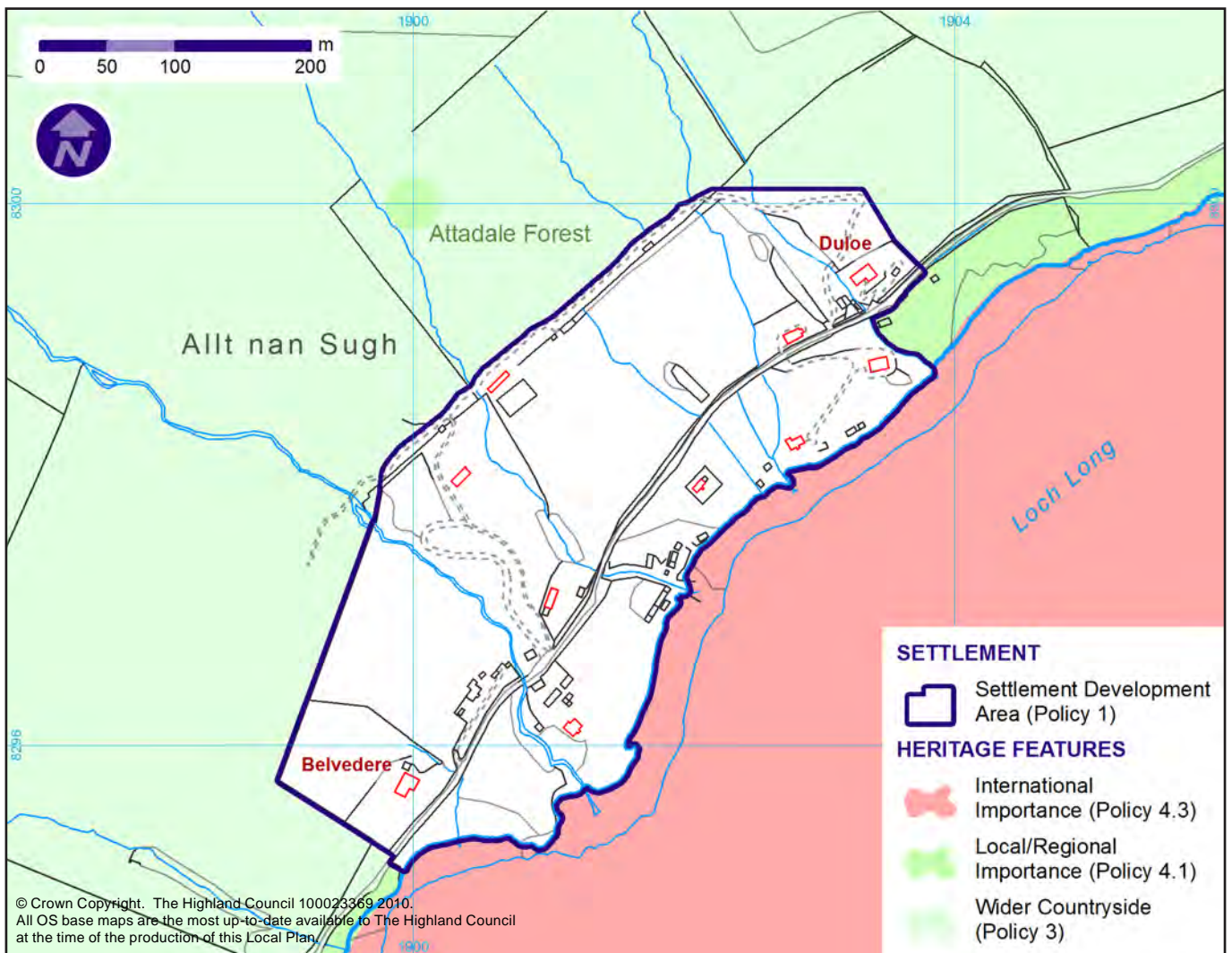


INSET 67 : ALLT NAN SUGH

Inset 67 : Allt nan Sùbh



Objectives

- To safeguard in by croft land quality by favouring siting on poorer parts of crofts or on common grazings where applicable.
- To protect seaward views where applicable.
- To secure developer funded local road improvements to the Loch Long spine road because it is constrained in terms of its condition and capacity - this will apply to all development taking access off it and in particular to further development within Allt nan Sugh, Camas Luinie and Sallachy.
- To secure exceptional siting and design quality where public seaward views are likely to be affected or land is within a landscape designation.
- To ensure drainage to land.
- To protect the SAC within the settlement.