

Uig Harbour Redevelopment

Community Liaison Meeting
28th September 2023



Summary of Works – Since last meeting

Marshalling Area	Approachway	Linkspan/Bankseat	Berthing Structure	Pierhead	Kingsburgh Quarry
<ul style="list-style-type: none"> • Installation of utilities • Kerbing preparation works • Piling for terminal building • Dry berth pour • Rock armour placement 	<ul style="list-style-type: none"> • Approachway extension bay concrete pours completed • Began installing timber fender piles 	<ul style="list-style-type: none"> • Concrete repair works • Hydro demolition works • Ongoing works offsite preparing the elements for delivery 	<ul style="list-style-type: none"> • Continuation of welding works • Installation of oil interceptor tank 	<ul style="list-style-type: none"> • Installation of scaffolding • Concrete repair works 	<ul style="list-style-type: none"> • Continued movement and storage of materials • Organisation of materials

Planned Works – Outage 2

30/10/23-11/12/23

- Removal of the existing Linkspan
- Demolition of 2no lifting dolphins
- Extraction of existing piles
- Removal of 2no protection piles
- Remove existing fenders
- Installation of new fenders
- Installation and commissioning of the new Linkspan



Marshalling Area



- Installation of utilities
- Kerbing preparation works
- Piling for terminal building
- Dry berth pour
- Rock armour placement

Approachway



- Approachway extension bay concrete pours completed
- Began installing timber fender piles

Linkspan/Bankseat



- Concrete repair works
- Hydro demolition works
- Ongoing works offsite preparing the elements for delivery

Berthing Structure

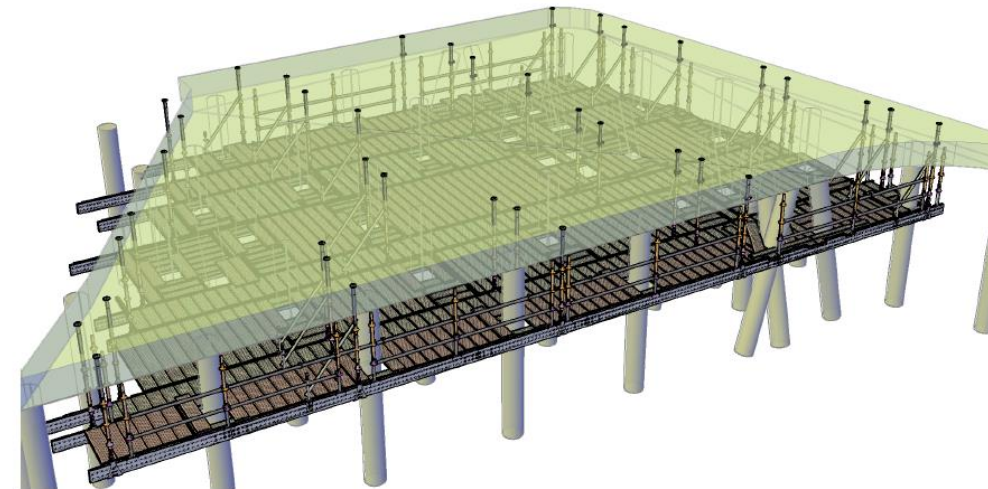


- Continuation of welding works
- Installation of oil interceptor tank

Pierhead



- Installation of scaffolding
- Concrete repair works



Kingsburgh Quarry



- Continued movement and storage of materials
- Organisation of materials

Planned works

- Complete Install of Precast on Approachway and Pierhead
- Completion of Tie Rods and Bulk Fill to Berthing Structure
- Phase 2 of Rock Armour to Berthing Structure
- Completion of Bankseat Concrete Works
- Installation of Fenders on Approachway
- Completion of Drainage and Ducting to Marshalling Area
- Installation of Concrete Dry Berth
- Demobilise Remainder of Marine Plant

Community Benefits

- Contracting with firms and supply chain with over £1M Skye and Lochalsh.
- Estimated local spend £300,000
- Engagement with schools, talks and business breakfasts to Kilmuir, Staffin, Plockton and Portree
- Staff are actively involved with school groups for Climbing, Hockey and Orienteering.
- Engaging with the job centre regarding future positions.
- Staff and the site involved with fundraising and charity events.
- Sponsored Schools Orienteering Competition
- Employed Student Engineer on Site
- STEM events at Plockton High School
- Site visit by Portree High School
- CLG Site Visit

Any Questions

