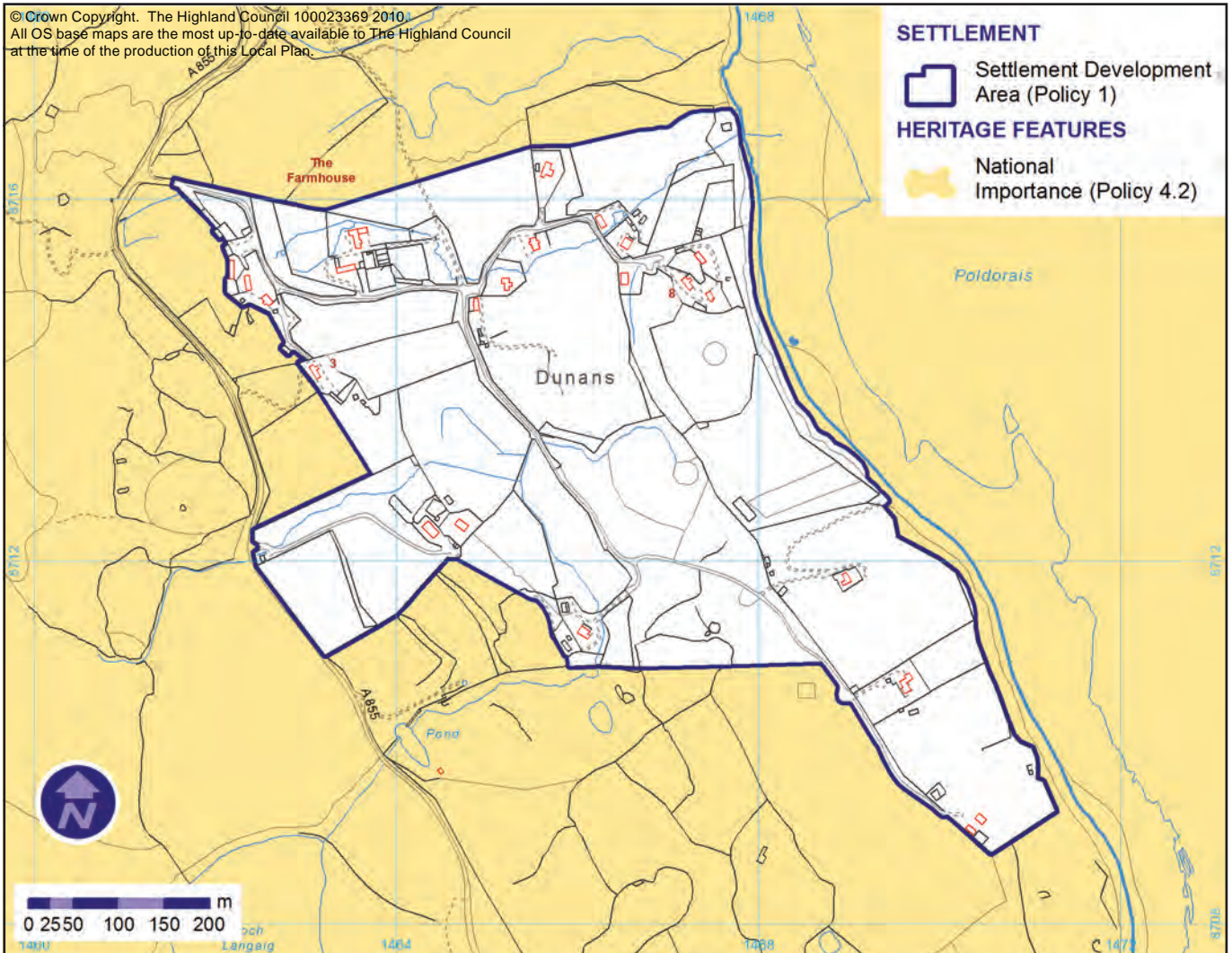


INSET 145 : DUNANS

Inset 145 : Na Dùnanan



Objectives

- To secure exceptional siting and design quality where public seaward or 'lochward' views are likely to be affected.
- To secure developer funded road improvements where a network deficiency is created or worsened.
- To protect public seaward views where applicable.
- To safeguard in by croft land quality by favouring siting on poorer parts of crofts or on common grazings.
- To protect the SSSI and safeguard above ground geological features.
- To protect the integrity of and secure exceptional siting and design within the NSA.