

# Uig Harbour Redevelopment

Community Liaison Meeting

16<sup>th</sup> November 2023



# Summary of Works – Since last meeting

Marshalling Area	Approachway	Linkspan/Bankseat	Berthing Structure	Pierhead	Kingsburgh Quarry
<ul style="list-style-type: none"> <li>• Installation of utilities</li> <li>• Kerbing works</li> <li>• Piling for terminal building</li> <li>• Dry berth pour complete</li> <li>• Installation of lighting columns</li> <li>• Surfacing Works</li> <li>• BT box on carriageway strengthened</li> <li>• Prepare concrete works to fishermen's compound and lorry parks</li> </ul>	<ul style="list-style-type: none"> <li>• Approachway extension bay concrete pours completed</li> <li>• Complete installation of timber fender piles</li> <li>• Install timber rubbing strips on fenders</li> <li>• Install ladders to berth for fishermen</li> <li>• Install quay furniture to approachway</li> <li>• Coring works</li> </ul>	<ul style="list-style-type: none"> <li>• Concrete repair works</li> <li>• Hydro demolition works</li> <li>• Remove the bankseat and demolish on quay deck</li> <li>• Remove the dolphin structures and demolish on quay deck</li> <li>• Existing linkspan deck bridge removed and prepped for cutting up for removal from site</li> <li>• New linkspan delivered to site</li> <li>• Installation of linkspan works commenced</li> <li>• Removal of old piles from old structures from sea bed ongoing</li> </ul>	<ul style="list-style-type: none"> <li>• Continuation of welding works</li> <li>• Installation of oil interceptor tank</li> <li>• Installation of foul tank</li> <li>• Infill and level area ready for slab works</li> <li>• Install service ducts for utilities</li> <li>• Pre-cast and deck works on outer roundhead</li> <li>• Welding of inner dolphin fenders</li> <li>• Welding for outer roundhead fenders</li> </ul>	<ul style="list-style-type: none"> <li>• Installation of scaffolding</li> <li>• Concrete repair works ongoing – due to recommence January 24th</li> <li>• Completion of concrete works on deck</li> <li>• Install quay furniture to deck area</li> </ul>	<ul style="list-style-type: none"> <li>• Continued movement and storage of materials</li> <li>• Organisation of materials</li> <li>• Further materials crushed to allow the works to be completed on site</li> </ul>

# Planned Works – Outage 2

## 30/10/23-11/12/23

Removal of the existing Linkspan
Demolition of 2no lifting dolphins
Extraction of existing piles
Remove existing fenders
Installation of new fenders
Installation and commissioning of the new Linkspan



# Outage 2 - Progress

	Description	% Complete
<b>Demolition Phase</b>		
	Linkspan Removal	100
	East Dolphin Demolition	80
	West Dolphin Demolition	70
	Bankseat Demolition	100
	Extraction of 7 x Existing Berthing Fenders	0
	Concrete Processing	40
	Old Linkspan disposal Works	60
<b>New Linkspan Installation</b>		
	Pre-Cast Concrete Deck and Transition Slab	100
	Bankseat and Associated works	80
	East Linkspan Support Dolphin	70
	West Linkspan Support Dolphin	70
	Main Deck	0
	Operating Kiosks & Pumphouse	70
	Commissioning Works	20
<b>Berthing Fender Installation</b>		
	Berthing Fender Pile Tubes x 7	0
	Berthing Fender Jackets x7	0
	Shear Chains x 14	0
	Grouting Works x7	0
<b>Roundhead Works &amp; Roundhead Fenders</b>		
	Pre-Cast Installation	100
	New Deck Installation	40
	Bollards	20
	Roundhead Fenders	40

Description	Days	%
Outage Timeline	42	100%
Days Complete	18	43%
Days Remaining	24	57%



## Marshalling Area



- Installation of utilities
- Kerbing works
- Piling for terminal building
- Dry berth pour complete
- Installation of lighting columns
- Surfacing Works
- BT box on carriageway strengthened
- Prepare concrete works to fishermens compound and lorry parks

# Approachway



- Approachway extension bay concrete pours completed
- Complete installation of timber fender piles
- Install timber rubbing strips on fenders
- Install ladders to berth for fishermen
- Install quay furniture to approachway
- Coring works

# Linkspan/Bankseat



- Concrete repair works
- Hydro demolition works
- Remove the bankseat and demolish on quay deck
- Remove the dolphin structures and demolish on quay deck
- Existing linkspan deck bridge removed and prepped for cutting up for removal from site
- New linkspan delivered to site
- Installation of linkspan works commenced
- Removal of old piles from old structures from sea bed ongoing











# Berthing Structure

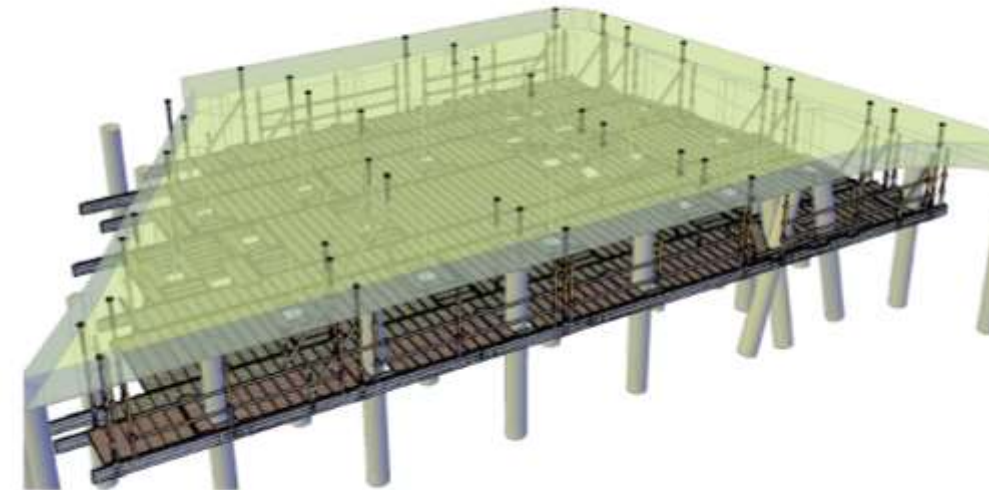


- Continuation of welding works
- Installation of oil interceptor tank
- Installation of foul tank
- Infill and level area ready for slab works
- Install service ducts for utilities
- Pre-cast and deck works on outer roundhead
- Welding of inner dolphin fenders
- Welding for outer roundhead fenders

# Pierhead



- Installation of scaffolding
- Concrete repair works ongoing – due to recommence January 24
- Completion of concrete works on deck
- Install quay furniture to deck area



# Kingsburgh Quarry



- Continued movement and storage of materials
- Organisation of materials
- Further materials crushed to allow the works to be completed on site

## Planned works

- Complete outage works and commission linkspan
- Installation of fendering to pier berth
- Complete fendering to approachway
- Concrete works to berthing structure slabs
- Services to approachway and footpath works
- Transfer of marshalling area from old to new
- Energise lights on marshalling area
- Complete pierhead strengthening works
- Reinstate dry berth
- Concrete deck pours to lorry park and the fishermen's compound
- Quarry works

## Community Benefits

- Contracting with firms and supply chain with over £1M Skye and Lochalsh.
- Estimated local spend £300,000
- Engagement with schools, talks and business breakfasts to Kilmuir, Staffin, Plockton and Portree
- Staff are actively involved with school groups for Climbing, Hockey and Orienteering.
- Engaging with the job centre regarding future positions.
- Staff and the site involved with fundraising and charity events.
- Sponsored Schools Orienteering Competition
- Employed Student Engineer on Site
- STEM events at Plockton High School
- Site visit by Portree High School
- CLG Site Visit
- Suggestion of local pipe to open the linkspan once completed



Any Questions

