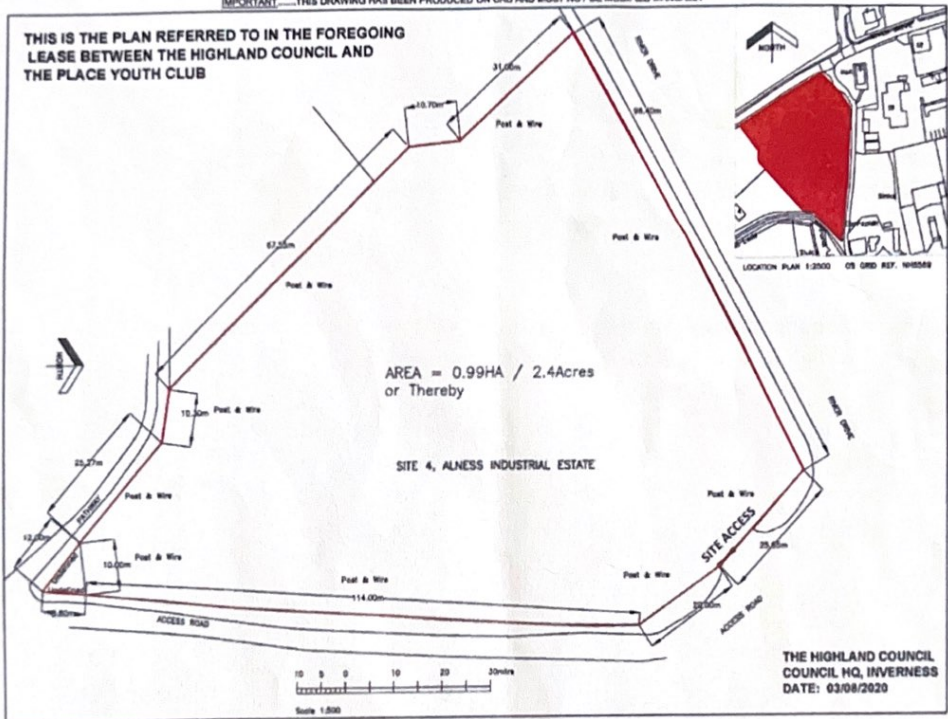


IMPORTANT.....THIS DRAWING HAS BEEN PRODUCED ON CAD AND MUST NOT BE MODIFIED MANUALLY

THIS IS THE PLAN REFERRED TO IN THE FOREGOING LEASE BETWEEN THE HIGHLAND COUNCIL AND THE PLACE YOUTH CLUB



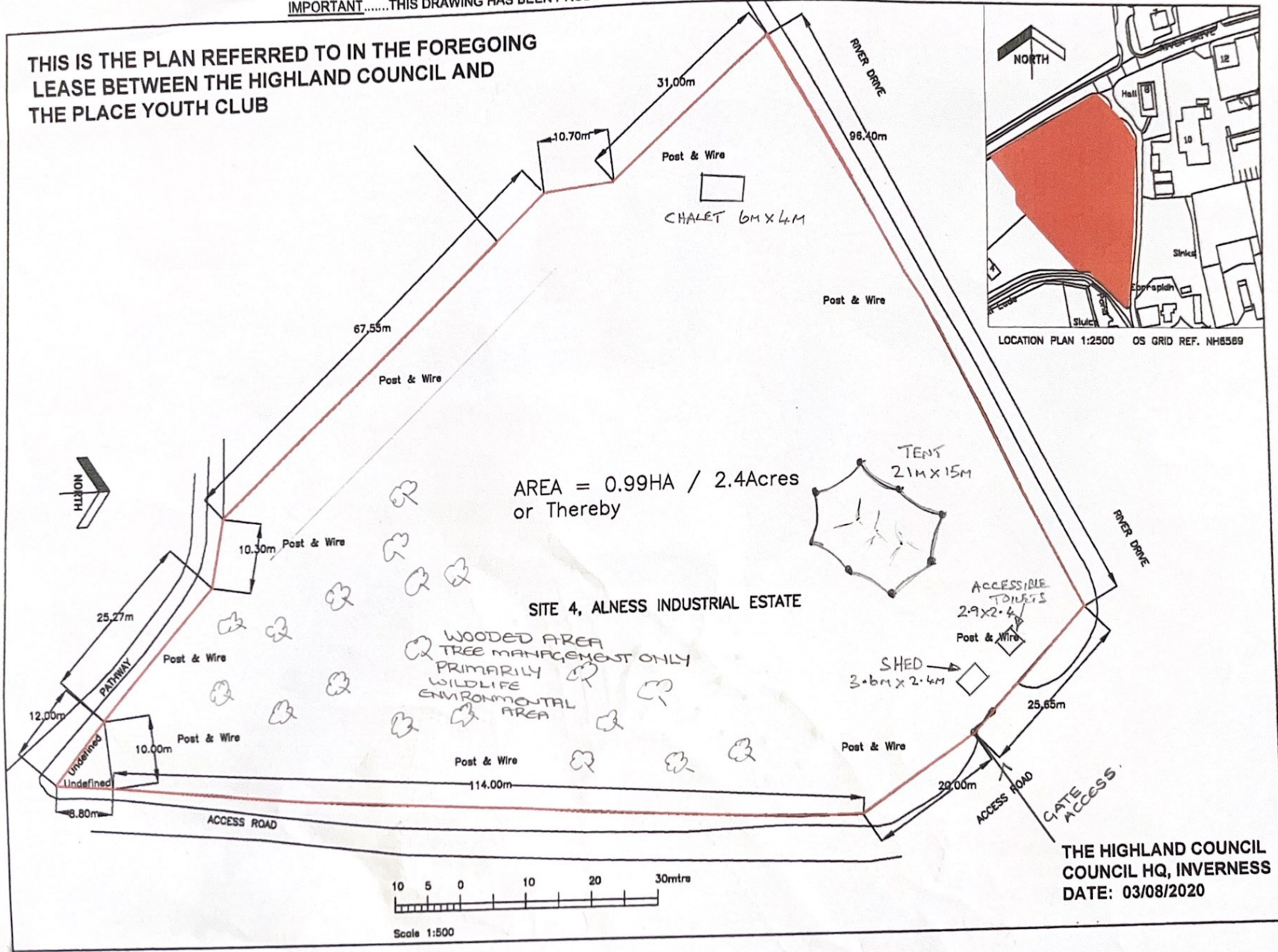
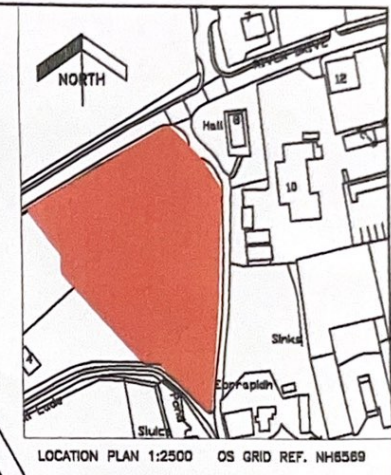
AREA = 0.99HA / 2.4Acres or Thereby

SITE 4, ALNESS INDUSTRIAL ESTATE

THE HIGHLAND COUNCIL  
COUNCIL HQ, INVERNESS  
DATE: 03/08/2020

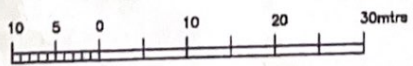
IMPORTANT.....THIS DRAWING HAS BEEN PRODUCED ON CAD AND MUST NOT BE MODIFIED MANUALLY

THIS IS THE PLAN REFERRED TO IN THE FOREGOING  
LEASE BETWEEN THE HIGHLAND COUNCIL AND  
THE PLACE YOUTH CLUB



AREA = 0.99HA / 2.4Acres  
or Thereby

SITE 4, ALNESS INDUSTRIAL ESTATE



THE HIGHLAND COUNCIL  
COUNCIL HQ, INVERNESS  
DATE: 03/08/2020