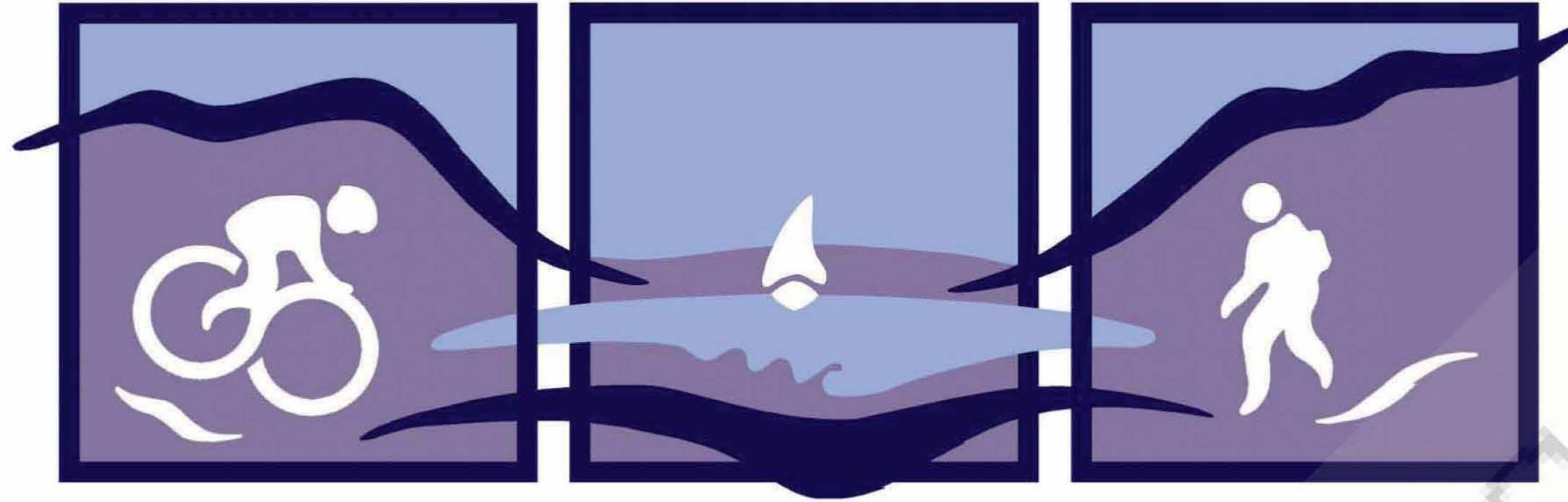


# G R E A T G L E N W A Y S



## S L I G H E A N A' G H L I N N M H Ó I R



British Waterways Scotland



PROJECT PART-FINANCED BY THE EUROPEAN UNION  
Europe and Scotland  
Making it **work together**



Welcome to where it all ends (or begins)...  
*Fàilte chun na crìche (no chun an toisich)...*

*Pronounced: Falcha choon na creechya (no chonn an tosheech)*



Exploring the canal by boat.

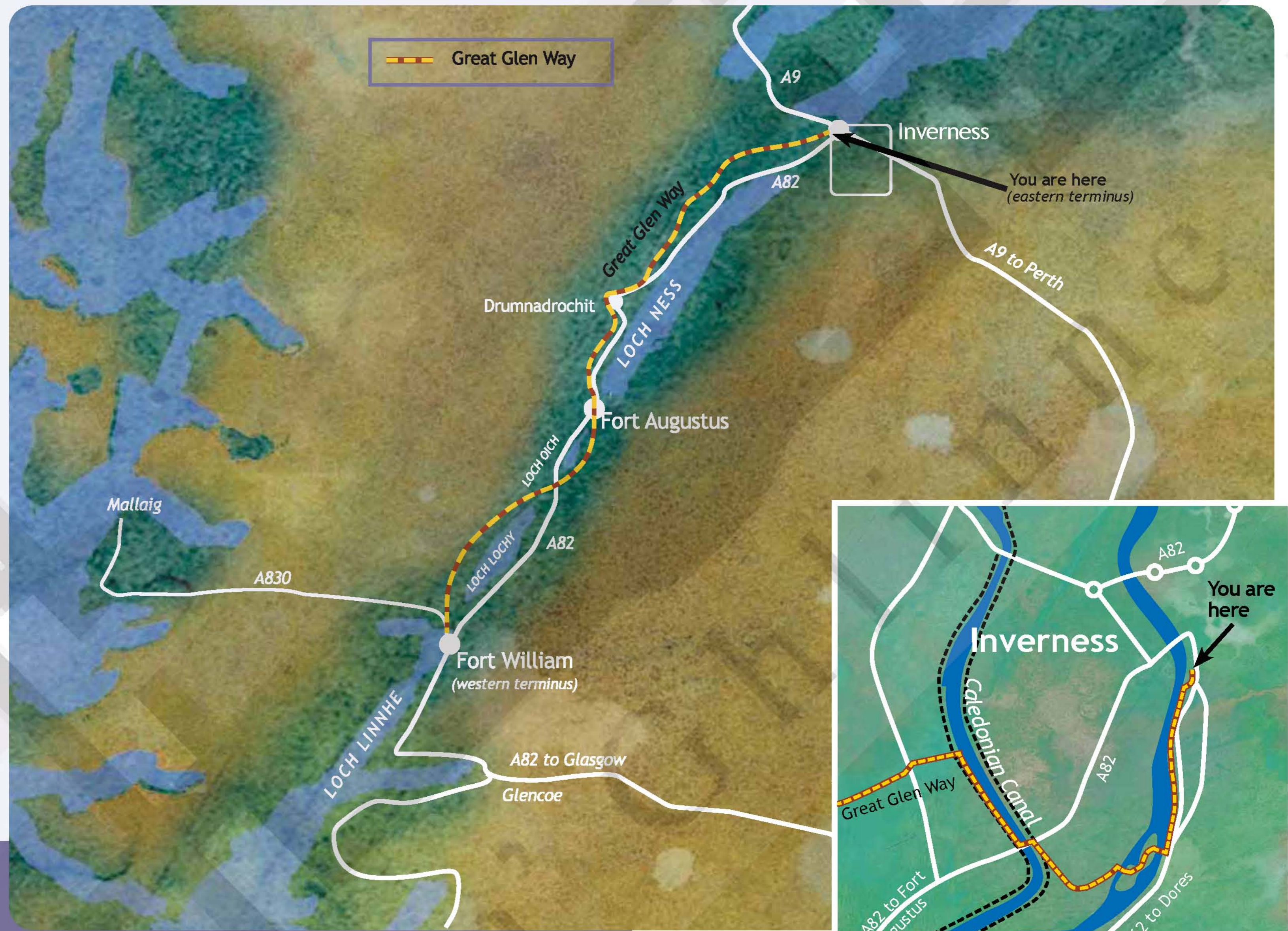
This is the official eastern terminus for the Great Glen Way - a route offering spectacular scenery, amazing natural heritage and fascinating history which links the east and west coasts of Scotland Alba. You can explore the Great Glen on foot, by bike or by boat.

The Great Glen Way long distance route (117 km/73 miles) follows Scotland's longest glen. Along the Way you will find Scotland's largest inland volume of water (Loch Ness), Britain's highest mountain (Ben Nevis), and some of the best views anywhere.

Whether you want to walk the whole of the route or just one short stretch, the Great Glen Way is here for you to explore and enjoy.



Unveiling of Flora MacDonald monument in 1899.



### Did you know...?

The earliest known movement of the Great Glen fault occurred over 400 million years ago when the land to the north moved south-westwards by several hundred kilometres to join the land to the south. Many movements on the fault have occurred since and it is still active. There have been over 60 minor earthquakes along the Great Glen in the last 200 years but, fortunately, most have been too faint to be noticed by local people.

### Fàilte Welcome to Inverness

If you've just walked all or part of the Way, or if you've come by mountain bike or travelled by water along the Caledonian Canal, you already know how breathtaking the Great Glen can be. Congratulations on reaching the eastern terminus of the Great Glen Way - "haste ye back".

Great Glen Way Rangers: Tel 01320 366633