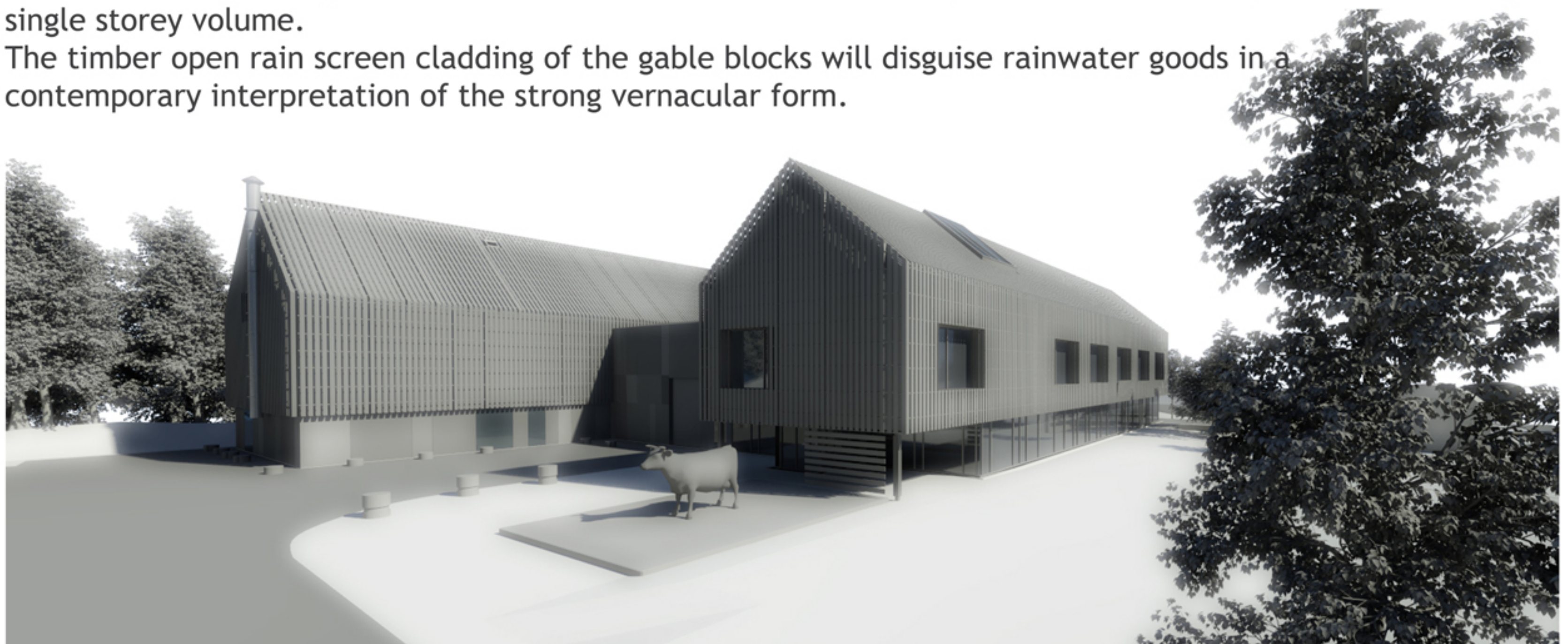


The proposed building is located on the north-eastern corner of the existing Folk Park site. This ensures that the development does not interrupt the flow and narrative of the established open air museum.

This development represents a change; our intention is that the new construction has a design concept grounded in both cultural and agricultural traditions and will enhance the park.

The building is essentially a series of three grouped containers which are dimensioned to satisfy the requirements of the brief, but the scale and massing of each also acknowledges the agricultural precedent, form and cluster arrangement which aims to reduce the overall impact which would be perceived as a large single storey volume.

The timber open rain screen cladding of the gable blocks will disguise rainwater goods in a contemporary interpretation of the strong vernacular form.



Am Fasgadh (The Shelter) Highland Museum Store