

## Wick Campus

Incorporating

Primary School, High School and East Caithness Community Facilities

The purpose of this newsletter is to bring everybody up to date with progress on the provision of a new Primary School, a new High School, and new Community Facilities on the site of the current High School and Pulteneytown Academy Primary School - referred to as the Wick Campus.

### What will be provided in each new facility on the Campus?

#### The New Primary School

Consultation with the two Parent Councils (Pulteneytown and South) has just begun, and the Education Brief being developed. This will include an Accommodation Schedule, with a description of how the new school should be designed. It is hoped to complete this stage by the end of June, so that the architect can start designing the school in July/August, coming back with proposals for discussion with all Stakeholders at the start of the new Session.

#### The New Wick High School

The Education Brief was developed last year, and has been consulted on widely.

- General Classrooms - all to a very high standard of ICT provision, and to include all new furnishings
- Specialist facilities for Art & Design, Physical Education (Games Hall, Gymnasium and Dance Studio), Music, Drama, Home Economics, Business and Computer Education, Technology and Science equipped to the most modern standards
- Specialist vocational provision for Practical Craft Skills, Professional cookery and Hair and Beauty
- Specialist provision for Assisted Support Needs
- Collaborative and Cooperative break out space to promote a variety of teaching methods
- Hall as part of flexible use space
- Kitchen, Dining and Café facilities
- One full sized synthetic Pitch (existing),
- One large grassed area, with 2 full sized football pitches / 400m running track/rugby pitch.
- Car and cycle parking, drop off area, and bus bays
- Car Parking and service area

#### East Caithness Community Facilities

This facility will be managed and operated by High Life Highland (HLH), who will also manage community access to other areas in the schools outwith school hours.

- Public Library
- Swimming Pool with Floating floor, and separate Toddler Pool
- Community have access to school areas eg PE Areas, Hall, the Street etc outwith school hours

All internal and external areas will be fully accessible to disabled users.

#### Consultation

There has been a number of Stakeholder Meetings, and meetings with Staff and pupils at the school, and High Life Highland (HLH) staff as regards the community facilities.

#### Plans

At the most recent set of meetings with the High School Pupils, Staff and Stakeholders, draft plans were tabled for discussion. These plans show the floor layout of the new facility (called the Stage C Design). Comments were noted, and amendments have been made by the Architect. Updated plans are shown overleaf.

#### The Project going forwards

As part of the requirements of Scottish Government funding, the Council will work in partnership with Hub North Scotland Ltd (the Hub - [www.hubnorthscotland.co.uk](http://www.hubnorthscotland.co.uk)) to complete the design, build and maintain the new facilities. This process also involves the Scottish Futures Trust [www.scottishfuturestrust.org.uk](http://www.scottishfuturestrust.org.uk) acting on the Scottish Government's behalf. More information on these organisations can be found by clicking on the links.

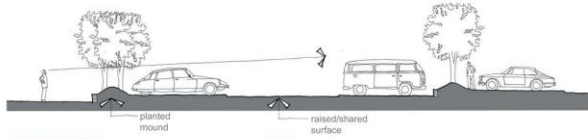
Any companies interested in being involved in the construction and maintenance of the new facilities can put their names forward to Hub. Please go to the supply chain section of their website: [www.hubnorthscotland.co.uk/supply-chain-enquiries.html](http://www.hubnorthscotland.co.uk/supply-chain-enquiries.html)

#### Timeline

The Primary School Brief, then design will 'catch up' with the High School / Community Facilities design later in the year, with the intention to sign a contract with the Hub to deliver the Wick Campus project by late summer 2013.

The new Campus will open to all users in August 2015, at which point the new Primary School to the North of the River will also open its doors to pupils.

# Site Plan



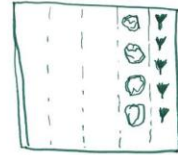
car park section



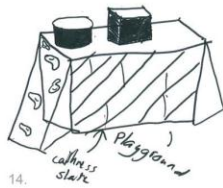
retaining features

key

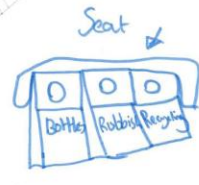
1. shallow reflective pools
2. amphitheatre
3. ecological planting
4. fabric canopy structure/shelter
5. circulation paths with trim trail, seats and sculpture
6. sports viewing terrace
7. school fruit and veg garden
8. wind generator
9. greenhouse, composting bins and recycling
10. sensory garden planting
11. battered caithness retaining wall
12. paved access
13. broad paved terrace and break out space
14. playground
15. distinct entrance
16. social areas



16.



14.



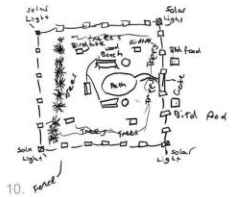
9.



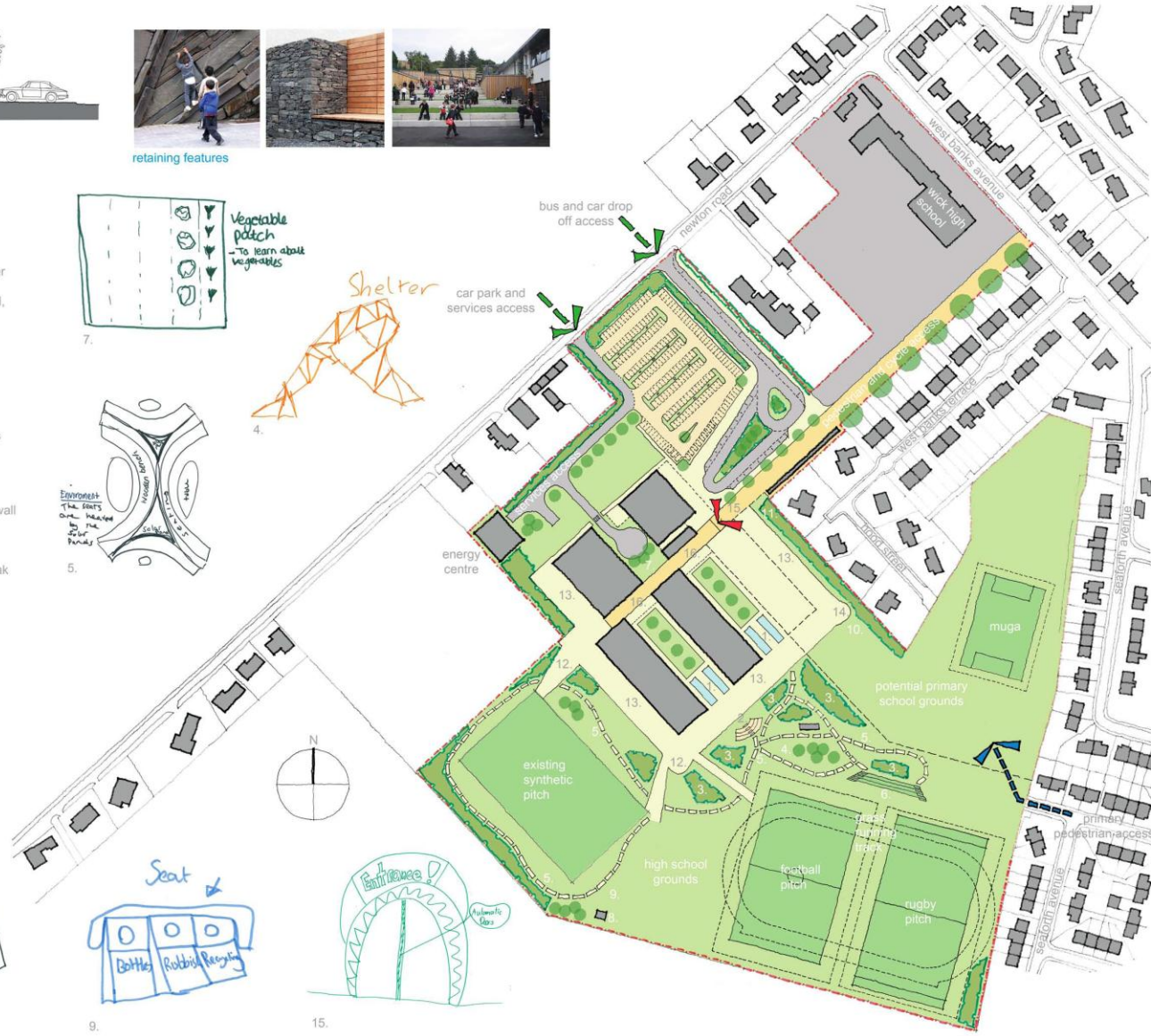
15.



pupil workshop



10.

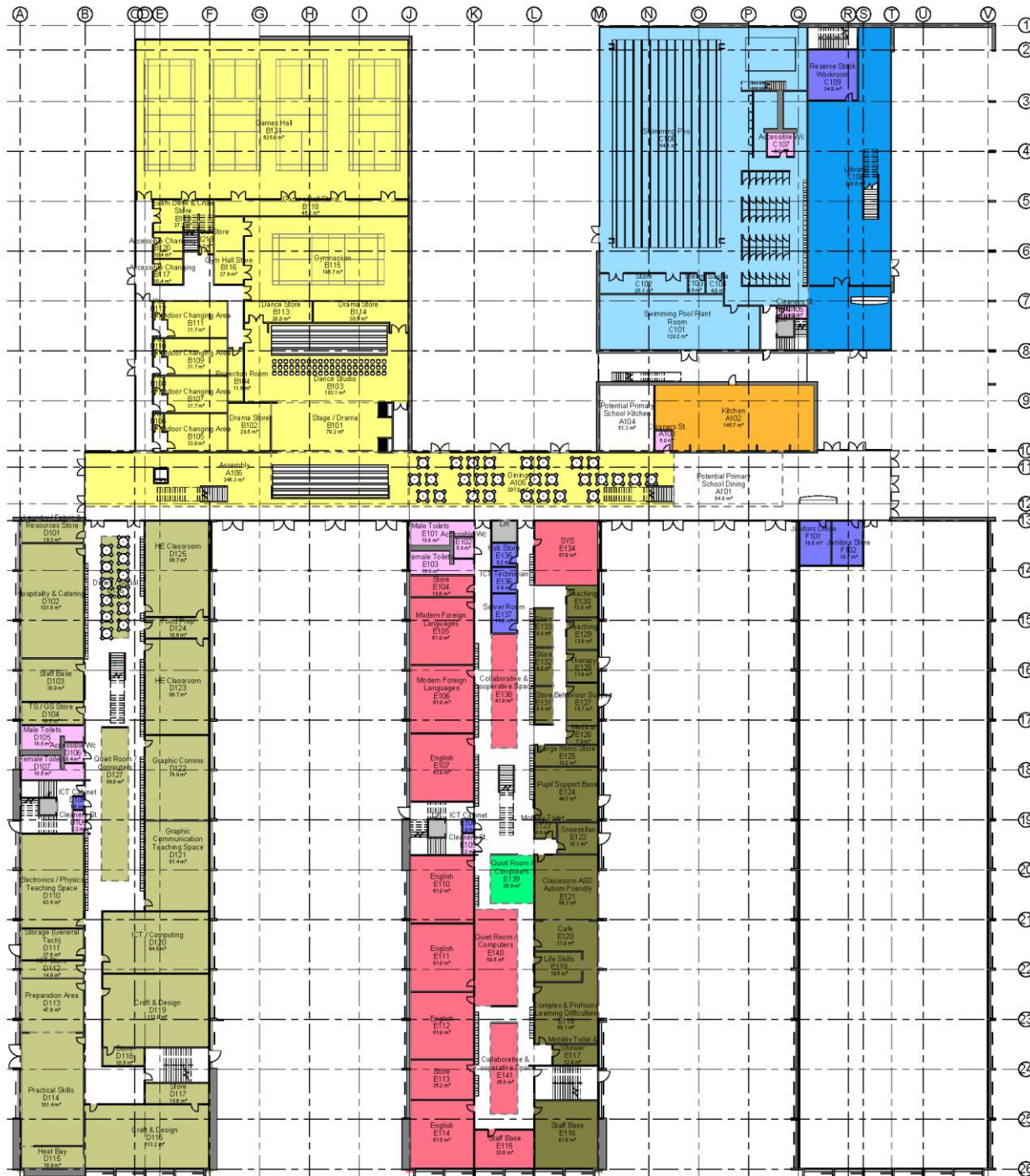


by housing and property services  
for education, culture and sport  
wick high school and east caithness community facilities

site plan (rev a)



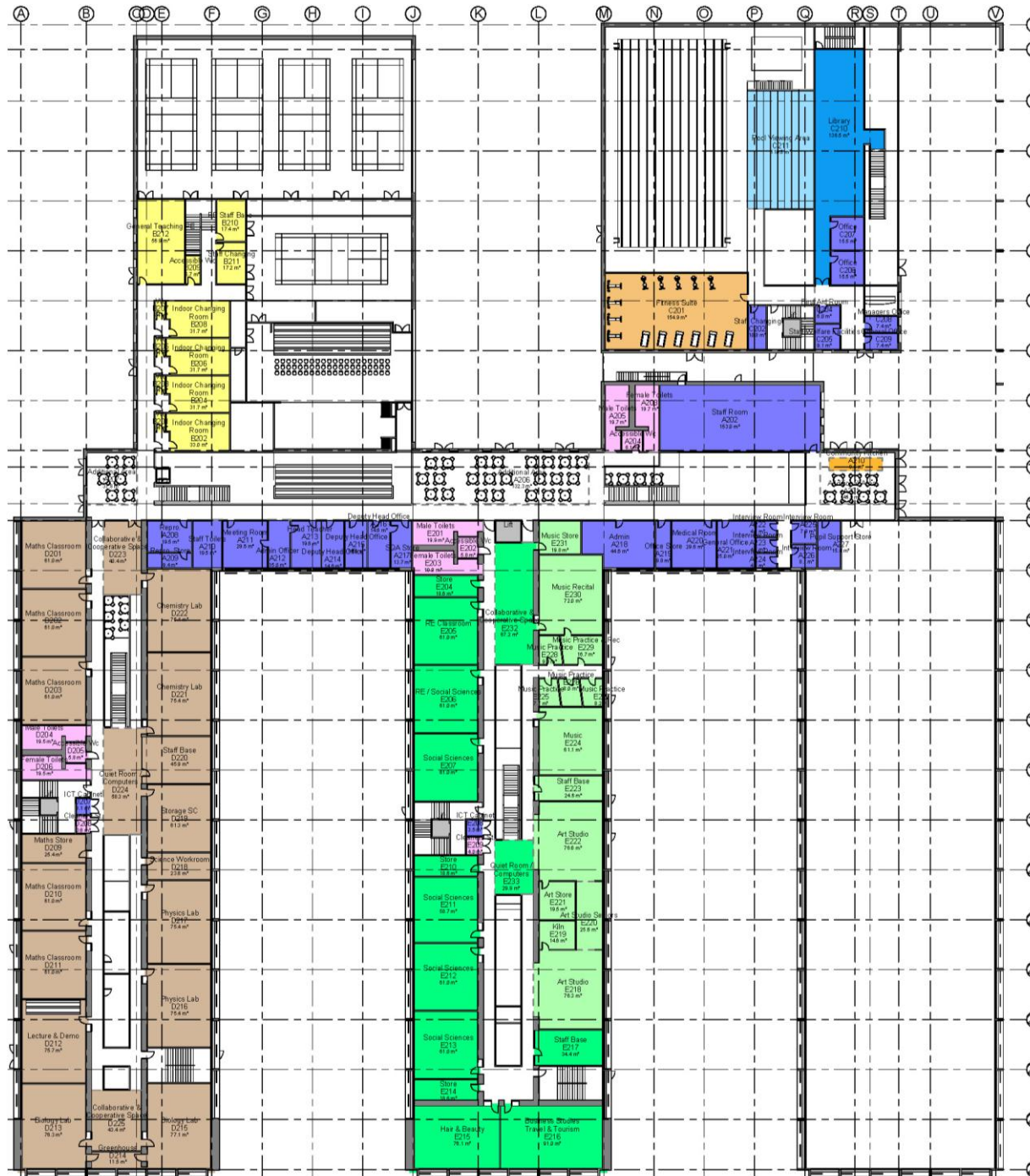
# Ground Floor Plan



## Department Legend

- Admin & Staff
- Ancillary
- ASN
- Circulation
- English & Modern Foreign Languages
- Kitchen
- Library
- Sports & Assembly
- Swimming Pool
- Technology

# First Floor Plan



## Department Legend

- Admin & Staff
- Ancillary
- Circulation
- Expressive Arts
- Fitness Suite
- Kitchen
- Library
- Maths & Science
- Social & Vocational
- Sports & Assembly
- Swimming Pool