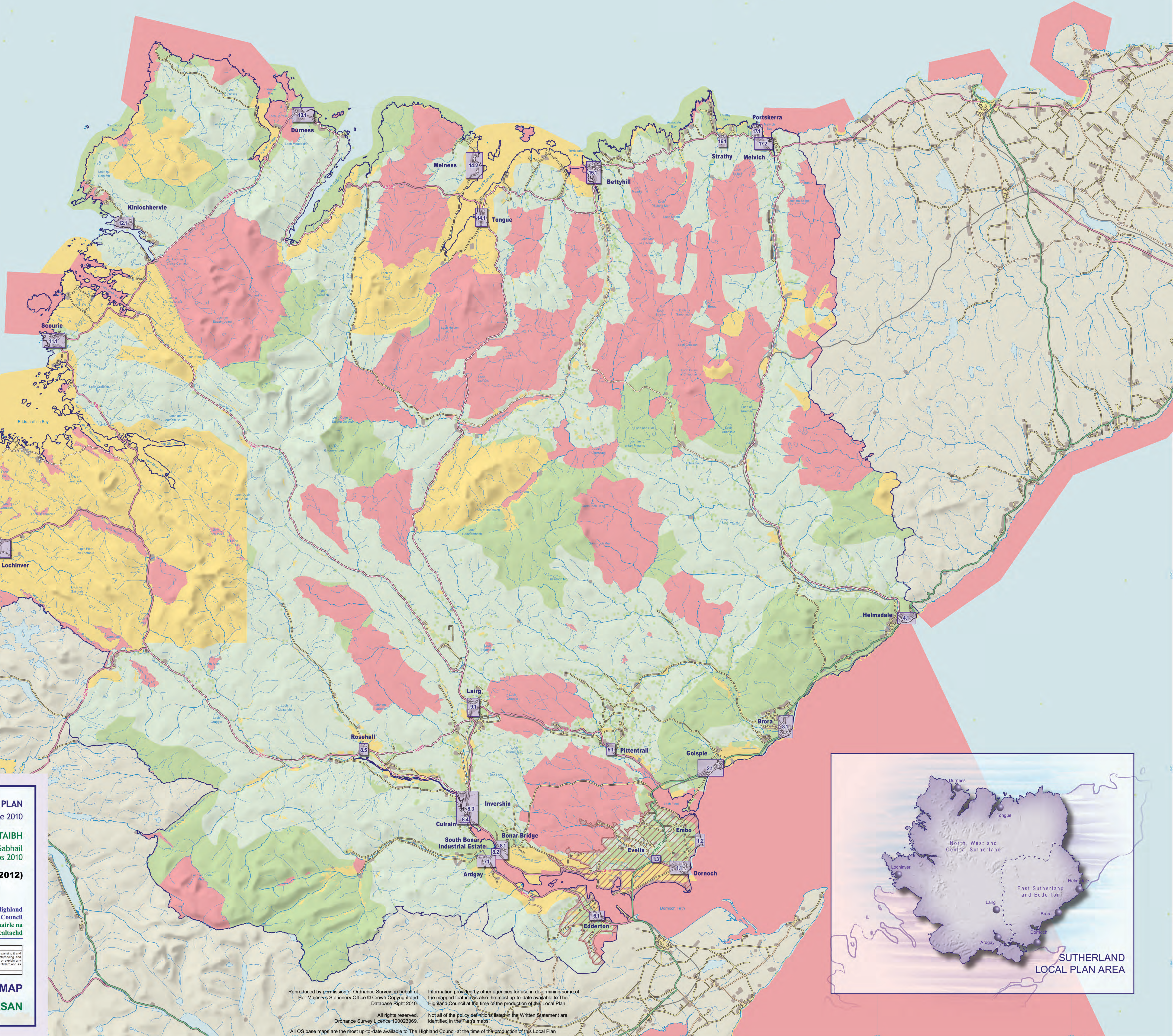


Legend

Policy Features	Map Features
1.2 Map Inset	Trunk Road
Wider Countryside (Policy 3)	A Road (and single track)
Local/Regional Importance (Policy 4.1)	B Road (and single track)
National Importance (Policy 4.2)	Minor Road
International Importance (Policy 4.3)	Railway Line
Hinterland	Settlement
Hinterland Around Towns (Policy 16)	Water Features

1:130,000
1 centimetre = 1.3 kilometres



SUTHERLAND LOCAL PLAN
Adopted Plan - June 2010

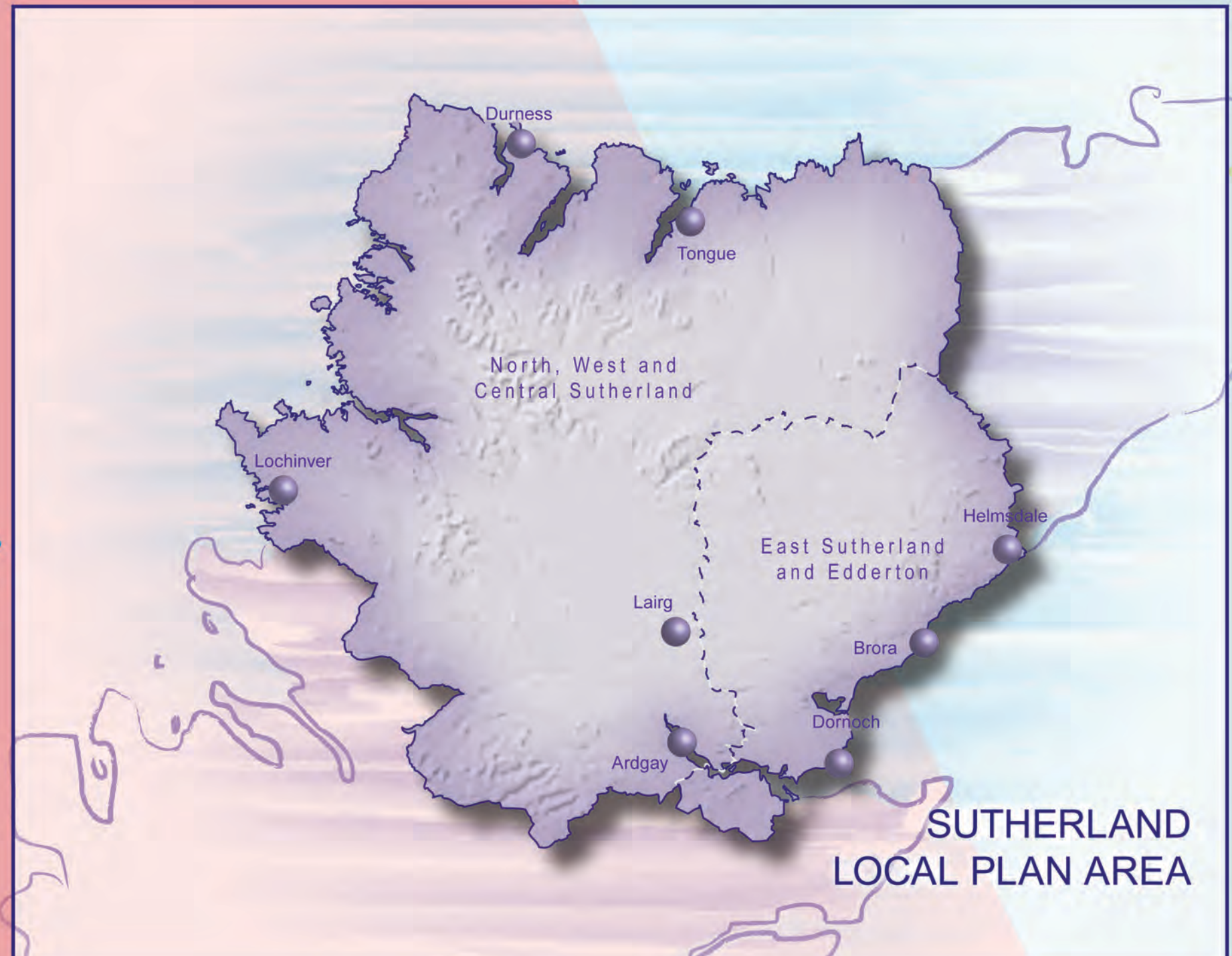
PLANA IONADAIL CHATAIBH
Plana Ris An Deach Gabhair
An t-Òg mhios 2010

(As Continued in Force) (April 2012)

The Highland Council
Comhairle na Gàidhealtachd

PROPOSALS MAP
MAP NAN AMASAN

The provisions of the Local Plan Maps as continued in force...
The provisions of the Proposed Map (including any inset contained in or accompanying it and the policies and proposals shown on both inset and related notations, referencing and explanatory text, only to the extent to which those provisions show, illustrate or explain any provision of the local plan which is continued in force in the Parliamentary Order and as detailed in the Modification Schedule.
© The Highland Council 2010. All rights reserved.



Reproduced by permission of Ordnance Survey on behalf of Her Majesty's Stationary Office © Crown Copyright and Database Right 2010.
Information provided by other agencies for use in determining some of the mapped features is also the most up-to-date available to The Highland Council at the time of the production of this Local Plan.
All rights reserved. Not all of the policy definitions listed in the Written Statement are identified in the Plan's maps.
Ordnance Survey Licence 100023959
All OS base maps are the most up-to-date available to The Highland Council at the time of the production of this Local Plan.