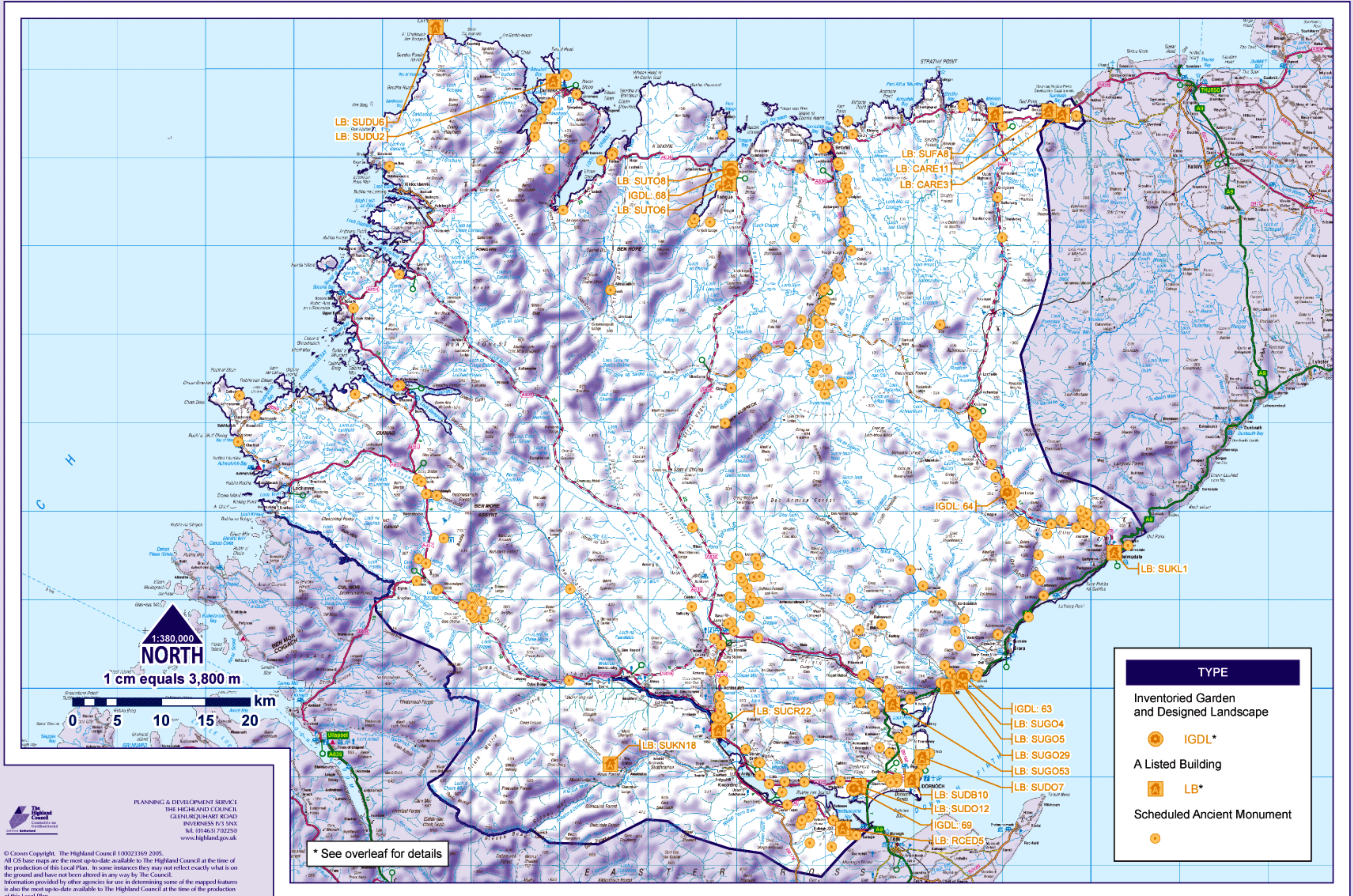


1:380,000
NORTH
 1 cm equals 3,800 m

TYPE	
	RAMSAR
	Special Protection Area
	Special Area of Conservation
	RAMSAR, SPA and SAC (Caithness and Sutherland Peatlands)

PLANNING & DEVELOPMENT SERVICE
 THE HIGHLAND COUNCIL
 GLENQUHART ROAD
 INVERNESS IV3 5NX
 TEL: (01463) 702250
 www.highland.gov.uk

© Crown Copyright. The Highland Council 100023369 2005.
 All OS base maps are the most up-to-date available to The Highland Council at the time of the production of this Local Plan. In some instances they may not reflect exactly what is on the ground and have not been altered in any way by The Council.
 Information provided by other agencies for use in determining some of the mapped features is also the most up-to-date available to The Highland Council at the time of the production of this Local Plan.



TYPE	
	Inventoried Garden and Designed Landscape
	IGDL*
	A Listed Building
	LB*
	Scheduled Ancient Monument

1:380,000
NORTH

1 cm equals 3,800 m



* See overleaf for details

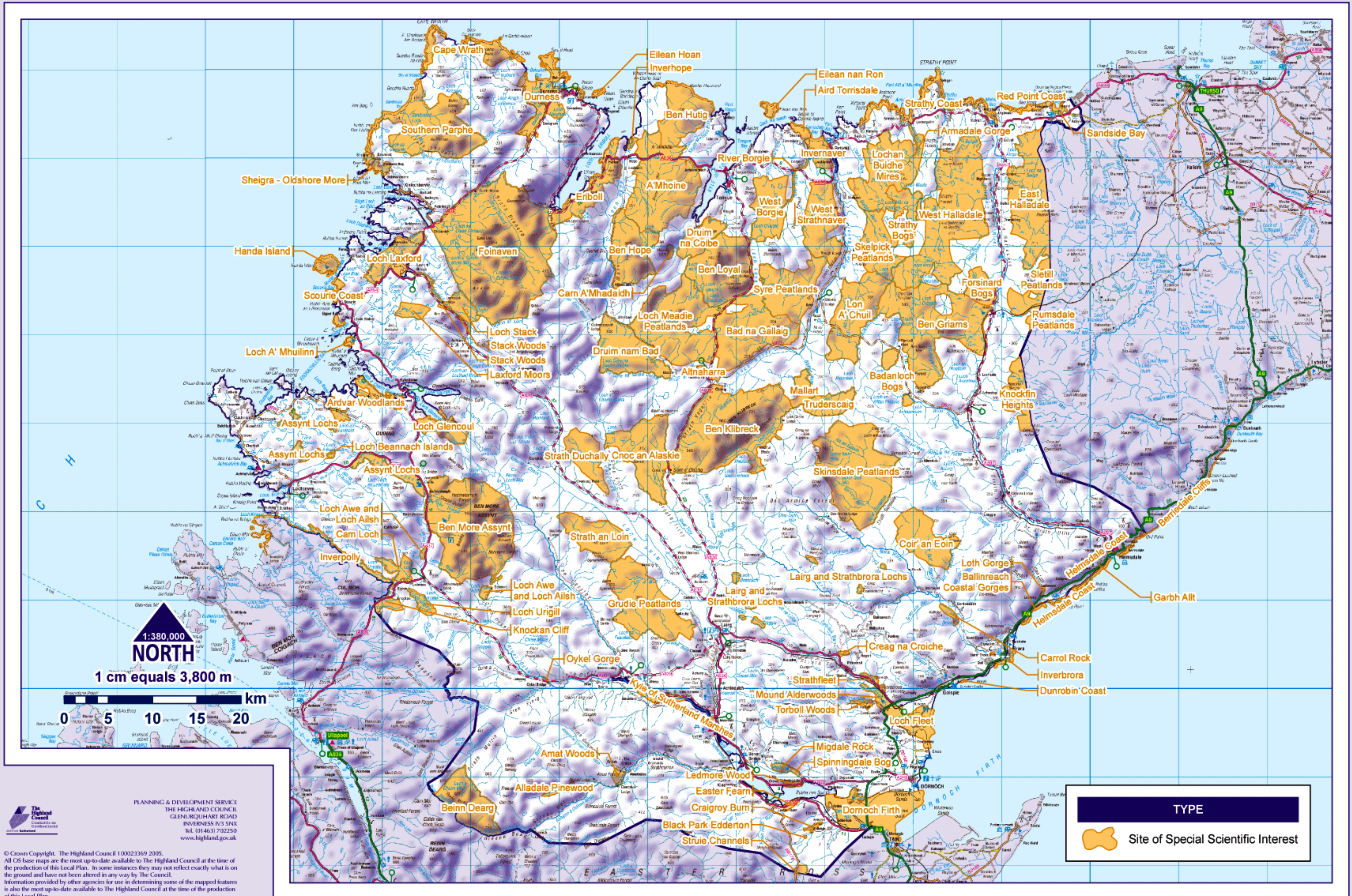
PLANNING & DEVELOPMENT SERVICE
 THE HIGHLAND COUNCIL
 GLENBUQUHART ROAD
 INVERNESS IV3 5NX
 TEL: (01463) 702250
 www.highland.gov.uk

© Crown Copyright. The Highland Council 100023369 2005.
 All OS base maps are the most up-to-date available to The Highland Council at the time of the production of this Local Plan. In some instances they may not reflect exactly what is on the ground and have not been altered in any way by The Council.
 Information provided by other agencies for use in determining some of the mapped features is also the most up-to-date available to The Highland Council at the time of the production of this Local Plan.

Inventoried Garden and Designed Landscape		Category A Listed Buildings		
Site No	Name	LB Ref.	Description	Category
63	Dunrobin Castle	CARE3	Reay Parish Church and Enclosing Wall; Reay Parish	A
64	Kildonan Lodge	CARE11	Sandside House; Kiln Barn and Single Storey Range; Reay Parish	A
69	Skibo Castle	CARE13	Sandside Harbour; 1 and 2 Sandside and Fishing Store; Reay Parish	A
68	Tongue House	SUCR22	Shin Viaduct over Kyle of Sutherland; Creich Parish	A
		SUDB10	Castle Street; Dornoch Cathedral and Walled Graveyard; Dornoch Burgh	A
		SUDO7	Embo House; Dornoch Parish	A
		SUDO12	Skibo Castle and Garden Terraces; Walled Garden and Glasshouses	A
		SUDU2	Balnakeil House; Walled Garden; Walls and Gatepiers; Durbess Parish	A
		SUDU6	Cape Wrath Lighthouse and Keeper's Cottages; Durness Parish	A
		SUFA8	Bighouse; Garden Pavilion and Walled Garden; Farr Parish	A
		SUGO4	Dunrobin Castle; Golspie Parish	A
		SUGO5	Dunrobin Castle; Garden Pavilion (Museum) and Walled Garden; Golspie Parish	A
		SUTO6	Tongue Parish Church of Scotland; Burial Ground and Gatepiers; Tongue	A
		SUGO29	Golspie; Main Street; St Andrews Parish Church of Scotland and Grounds	A
		SUGO53	Mound Bridge and Keeper's Cottage; Golspie Parish	A
		SUKL1	Helmsdale Bridge over River Helmsdale; Kildonan Parish	A
		SUKN18	Strathcarron; Croick Parish Church of Scotland and Burial Ground	A
		SUTO8	Tongue House; Tongue Parish	A (A Group)
		RCED5	Old Parish Church and Burial Ground; Edderton Parish	A



PLANNING & DEVELOPMENT SERVICE
 THE HIGHLAND COUNCIL
 GLENURQUHART ROAD
 INVERNESS IV3 5NX
 Tel. (01463) 702250
 www.highland.gov.uk



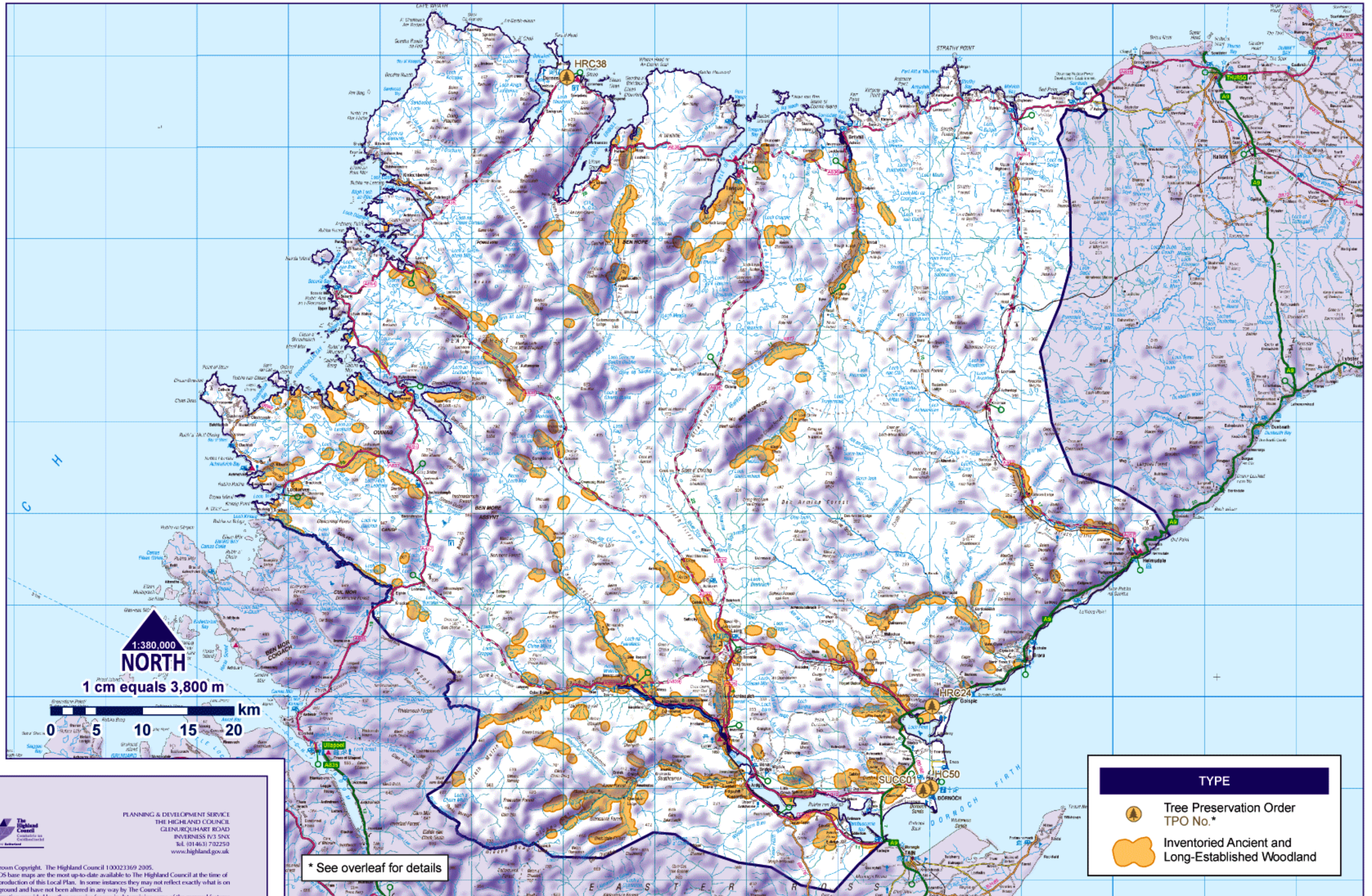
1:380,000
NORTH

1 cm equals 3,800 m

0 5 10 15 20 km

PLANNING & DEVELOPMENT SERVICE
THE HIGHLAND COUNCIL
GLENBUQUHART ROAD
INVERNESS IV3 5NX
Tel: (01463) 702250
www.highland.gov.uk

© Crown Copyright. The Highland Council 100023369 2005.
All OS base maps are the most up-to-date available to The Highland Council at the time of the production of this Local Plan. In some instances they may not reflect exactly what is on the ground and have not been altered in any way by The Council.
Information provided by other agencies for use in determining some of the mapped features is also the most up-to-date available to The Highland Council at the time of the production of this Local Plan.



1:380,000
NORTH

1 cm equals 3,800 m



TYPE	
	Tree Preservation Order TPO No.*
	Inventoried Ancient and Long-Established Woodland

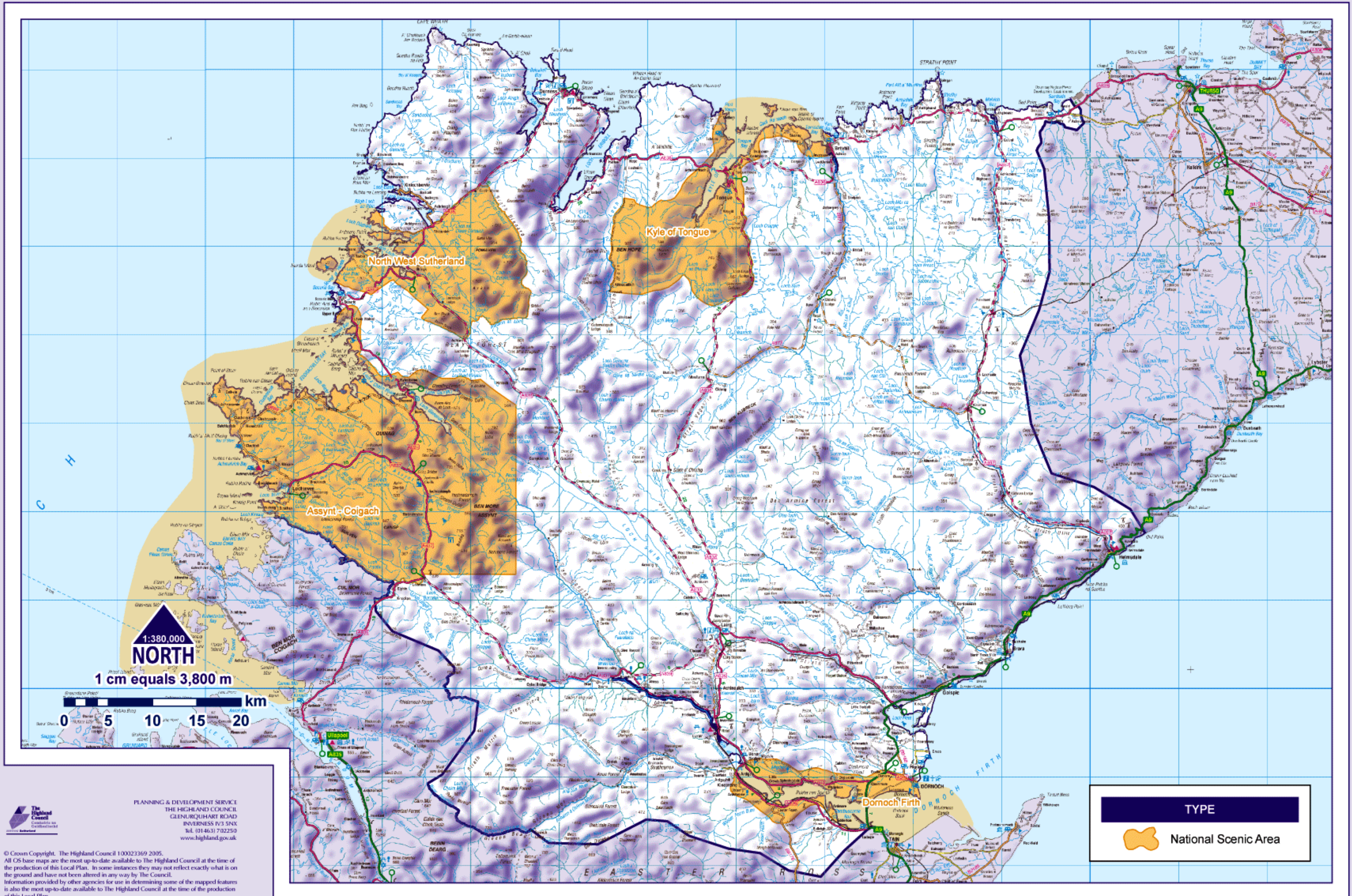
* See overleaf for details

PLANNING & DEVELOPMENT SERVICE
 THE HIGHLAND COUNCIL
 GLENQUHART ROAD
 INVERNESS IV3 5NX
 Tel: (01463) 702250
 www.highland.gov.uk

© Crown Copyright. The Highland Council 100023369 2005.
 All OS base maps are the most up-to-date available to The Highland Council at the time of the production of this Local Plan. In some instances they may not reflect exactly what is on the ground and have not been altered in any way by The Council.
 Information provided by other agencies for use in determining some of the mapped features is also the most up-to-date available to The Highland Council at the time of the production of this Local Plan.

Tree Preservation Order

TPO Number	Name	Location	Status
HRC24	A9 (T) Golspie	Golspie	Confirmed
HRC38	School Road	Durness	Confirmed
SUCC01	Station Wood & Earls Cross	Dornoch	To Be Confirmed
HC50	Highfield, Evelix Road	Dornoch	Pending




1:380,000
NORTH

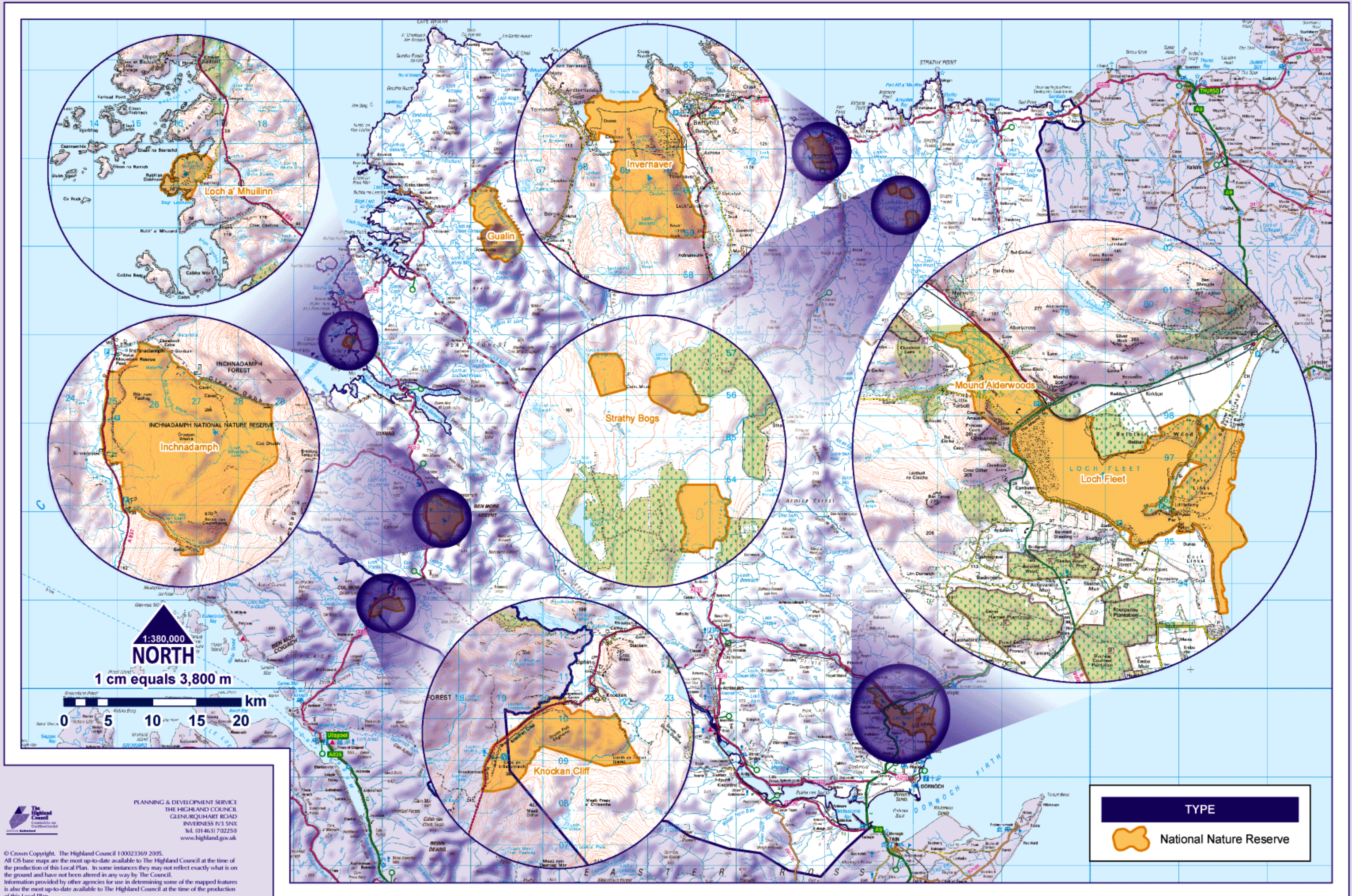
1 cm equals 3,800 m

0 5 10 15 20 km

PLANNING & DEVELOPMENT SERVICE
 THE HIGHLAND COUNCIL
 GLENBUQUHART ROAD
 INVERNESS IV3 5NX
 Tel: (01463) 702250
 www.highland.gov.uk

© Crown Copyright. The Highland Council 100023369 2005.
 All OS base maps are the most up-to-date available to The Highland Council at the time of the production of this Local Plan. In some instances they may not reflect exactly what is on the ground and have not been altered in any way by the Council.
 Information provided by other agencies for use in determining some of the mapped features is also the most up-to-date available to The Highland Council at the time of the production of this Local Plan.


TYPE	
	National Scenic Area

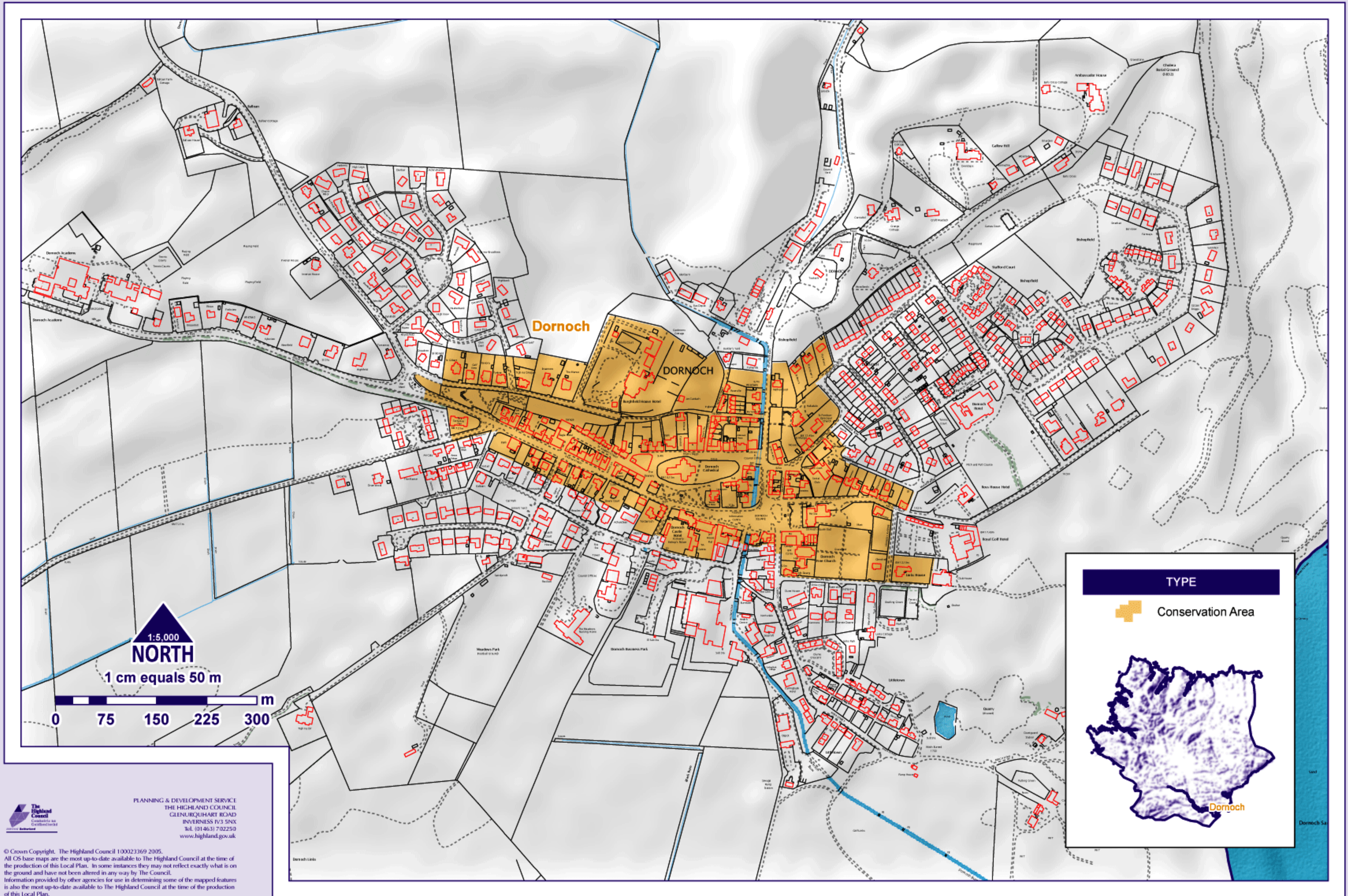


© Crown Copyright. The Highland Council 100023369 2005.
 All OS base maps are the most up-to-date available to The Highland Council at the time of the production of this Local Plan. In some instances they may not reflect exactly what is on the ground and have not been altered in any way by The Council.
 Information provided by other agencies for use in determining some of the mapped features is also the most up-to-date available to The Highland Council at the time of the production of this Local Plan.

PLANNING & DEVELOPMENT SERVICE
 THE HIGHLAND COUNCIL
 GLENURQUHART ROAD
 INVERNESS IV3 5NX
 Tel: (01463) 702250
 www.highland.gov.uk



TYPE	
	National Nature Reserve



1:5,000
NORTH

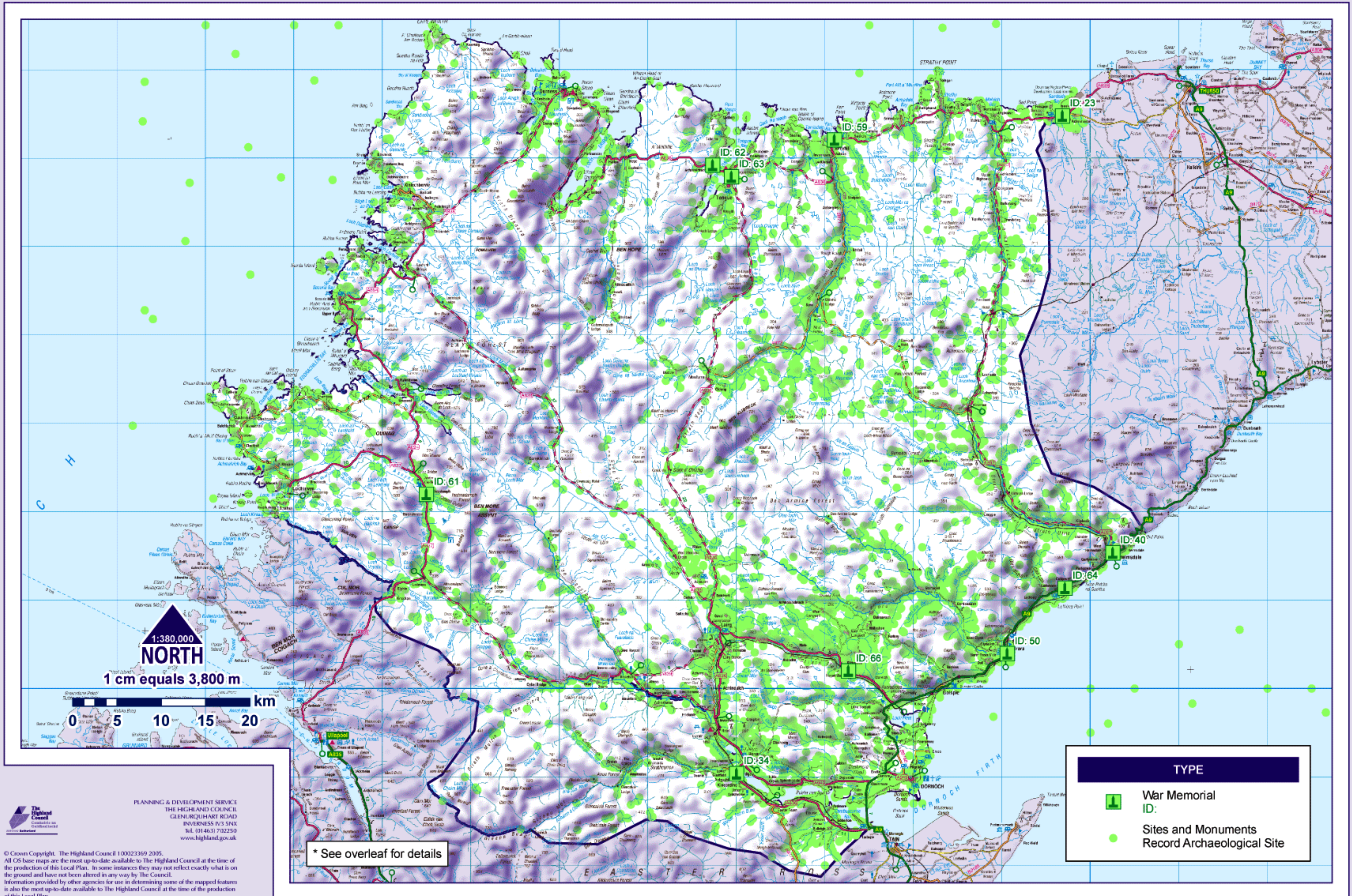
1 cm equals 50 m

0 75 150 225 300 m



PLANNING & DEVELOPMENT SERVICE
THE HIGHLAND COUNCIL
GLENURQUHART ROAD
INVERNESS IV3 5NX
Tel: (01463) 702250
www.highland.gov.uk

© Crown Copyright. The Highland Council 100023369 2005.
All OS base maps are the most up-to-date available to The Highland Council at the time of the production of this Local Plan. In some instances they may not reflect exactly what is on the ground and have not been altered in any way by The Council.
Information provided by other agencies for use in determining some of the mapped features is also the most up-to-date available to The Highland Council at the time of the production of this Local Plan.



1:380,000
NORTH

1 cm equals 3,800 m



TYPE	
	War Memorial ID:
	Sites and Monuments Record Archaeological Site

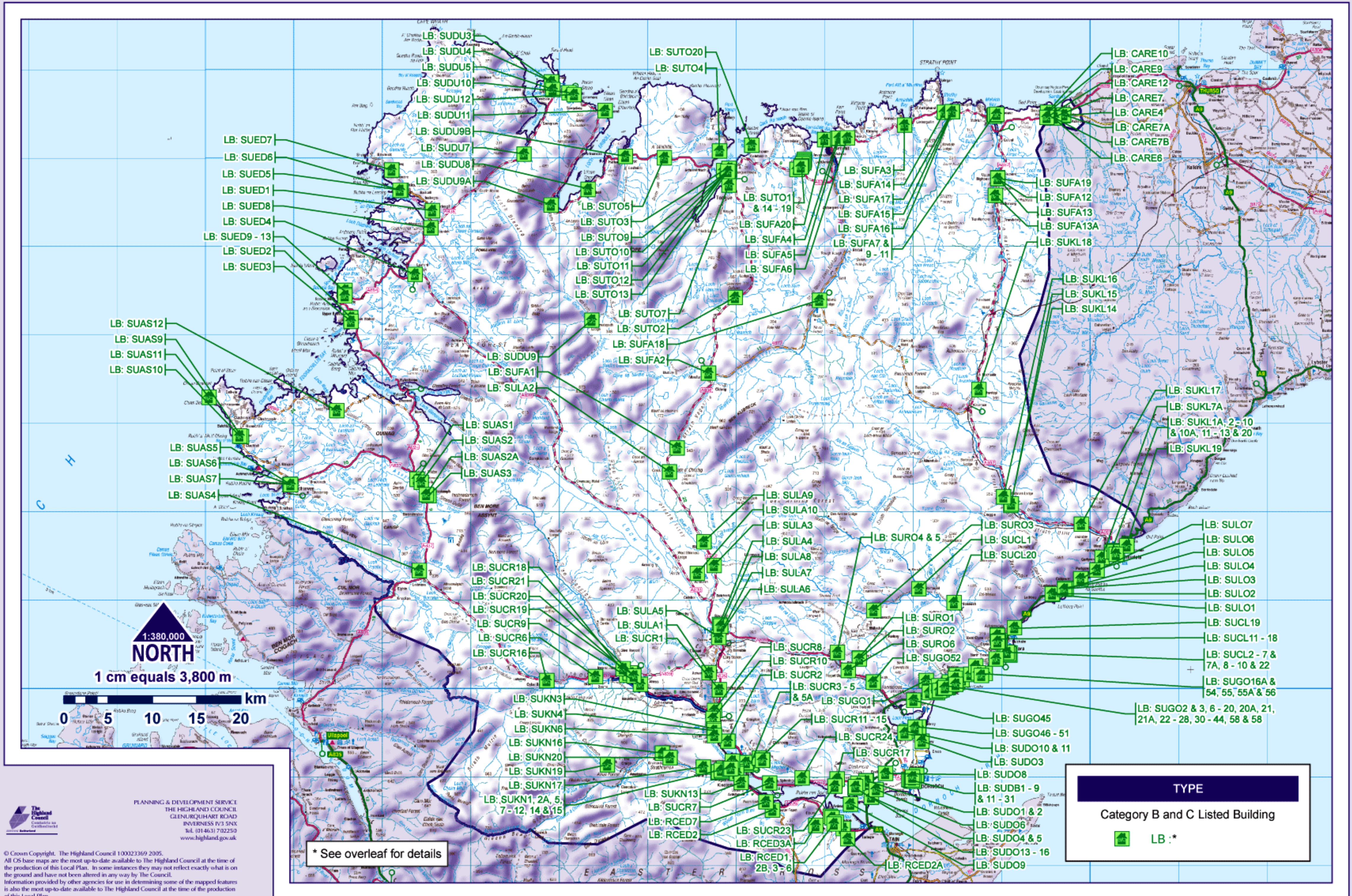
* See overleaf for details

PLANNING & DEVELOPMENT SERVICE
 THE HIGHLAND COUNCIL
 GLENQUHART ROAD
 INVERNESS IV3 5NX
 Tel: (01463) 702250
 www.highland.gov.uk

© Crown Copyright. The Highland Council 100023369 2005.
 All OS base maps are the most up-to-date available to The Highland Council at the time of the production of this Local Plan. In some instances they may not reflect exactly what is on the ground and have not been altered in any way by The Council.
 Information provided by other agencies for use in determining some of the mapped features is also the most up-to-date available to The Highland Council at the time of the production of this Local Plan.

War Memorials

ID	Name
23	Reay
34	Ardgay
40	Helmsdale, War Memorial
50	Brora, War Memorial
59	Bettyhill War Memorial
61	Assynt Old Parish Church Burial Ground, Inchnadamp
62	Melness, graveyard
63	Tongue War Memorial
64	Loth War Memorial
66	Rogart War Memorial



LB: SUED7
 LB: SUED6
 LB: SUED5
 LB: SUED1
 LB: SUED8
 LB: SUED4
 LB: SUED9 - 13
 LB: SUED2
 LB: SUED3

LB: SUAS12
 LB: SUAS9
 LB: SUAS11
 LB: SUAS10

LB: SUAS5
 LB: SUAS6
 LB: SUAS7
 LB: SUAS4

LB: SUAS1
 LB: SUAS2
 LB: SUAS2A
 LB: SUAS3

LB: SUCR18
 LB: SUCR21
 LB: SUCR20
 LB: SUCR19
 LB: SUCR9
 LB: SUCR6
 LB: SUCR16

LB: SUKN3
 LB: SUKN4
 LB: SUKN6
 LB: SUKN16
 LB: SUKN20
 LB: SUKN19
 LB: SUKN17
 LB: SUKN1, 2A, 5,
 7 - 12, 14 & 15

LB: SUKN13
 LB: SUCR7
 LB: RCED7
 LB: RCED2

LB: SUCR23
 LB: RCED3A
 LB: RCED1,
 2B, 3 & 6

LB: SUTO5
 LB: SUTO3
 LB: SUTO9
 LB: SUTO10
 LB: SUTO11
 LB: SUTO12
 LB: SUTO13

LB: SUTO7
 LB: SUTO2
 LB: SUFA18
 LB: SUFA2

LB: SUTO1
 & 14 - 19
 LB: SUFA20
 LB: SUFA4
 LB: SUFA5
 LB: SUFA6

LB: SUFA3
 LB: SUFA14
 LB: SUFA17
 LB: SUFA15
 LB: SUFA16
 LB: SUFA7 &
 9 - 11

LB: SULA9
 LB: SULA10
 LB: SULA3
 LB: SULA4
 LB: SULA8
 LB: SULA7
 LB: SULA6

LB: SUCR8
 LB: SUCR10
 LB: SUCR2
 LB: SUCR3 - 5
 & 5A

LB: SUCR11 - 15
 LB: SUCR24
 LB: SUCR17

LB: SURO1
 LB: SURO2
 LB: SURO6

LB: SUGO52
 LB: SUGO1
 LB: SUGO45
 LB: SUGO46 - 51

LB: SUDO10 & 11
 LB: SUDO3
 LB: SUDO8
 LB: SUDB1 - 9
 & 11 - 31
 LB: SUDO1 & 2
 LB: SUDO6
 LB: SUDO4 & 5
 LB: SUDO13 - 16
 LB: SUDO9

LB: CARE10
 LB: CARE9
 LB: CARE12
 LB: CARE7
 LB: CARE4
 LB: CARE7A
 LB: CARE7B
 LB: CARE6

LB: SUFA19
 LB: SUFA12
 LB: SUFA13
 LB: SUFA13A
 LB: SUKL18

LB: SUKL16
 LB: SUKL15
 LB: SUKL14

LB: SUKL17
 LB: SUKL7A
 LB: SUKL1A, 2 - 10
 & 10A, 11 - 13 & 20
 LB: SUKL19


LB: SULO7
 LB: SULO6
 LB: SULO5
 LB: SULO4
 LB: SULO3
 LB: SULO2
 LB: SULO1

LB: SUCL19
 LB: SUCL11 - 18
 LB: SUCL2 - 7 &
 7A, 8 - 10 & 22
 LB: SUGO16A &
 54, 55, 55A & 56

LB: SUGO2 & 3, 6 - 20, 20A, 21,
 21A, 22 - 28, 30 - 44, 58 & 58

TYPE

Category B and C Listed Building

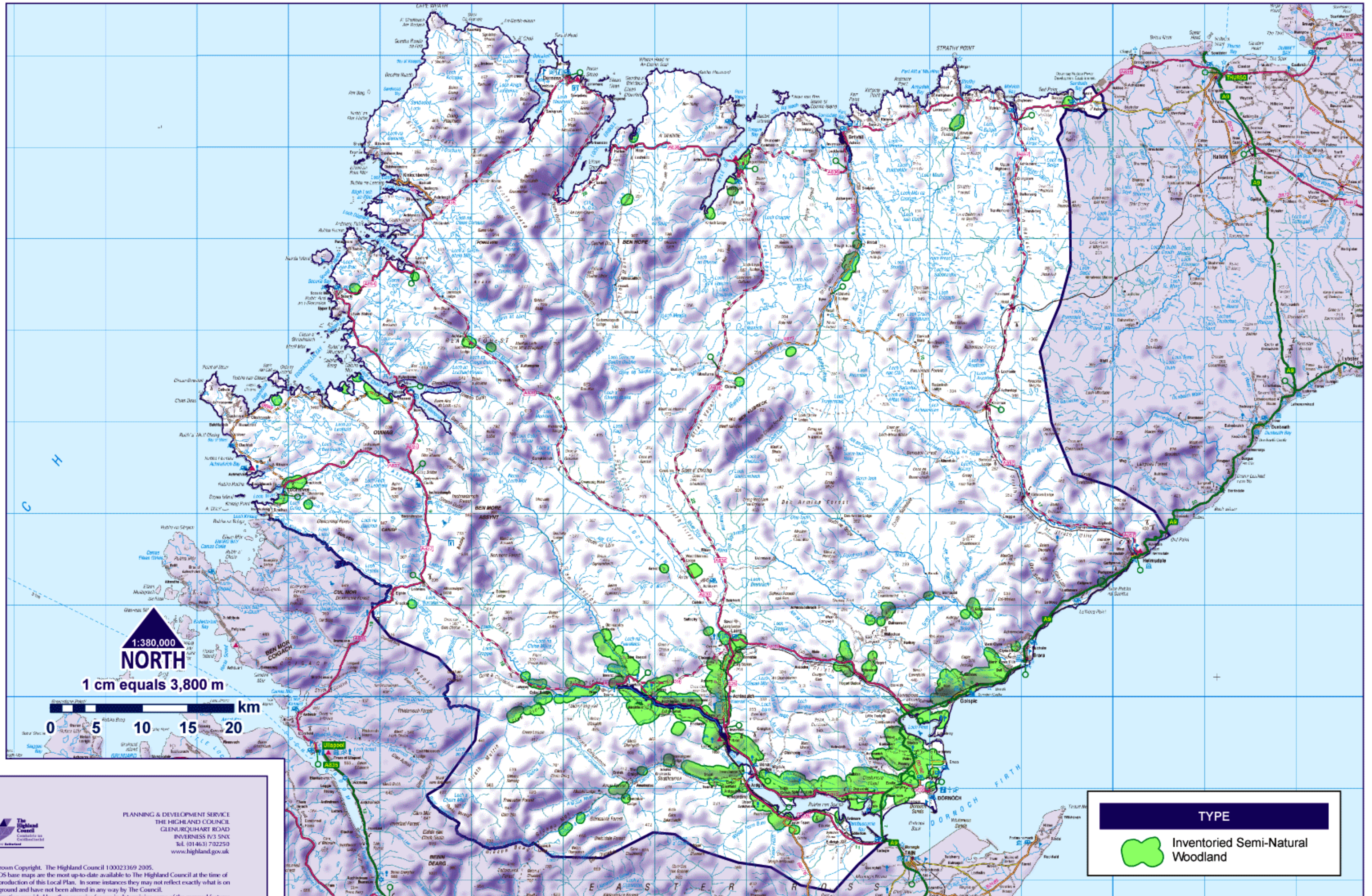
 LB: *

1:380,000
NORTH
 1 cm equals 3,800 m

0 5 10 15 20 km

PLANNING & DEVELOPMENT SERVICE
 THE HIGHLAND COUNCIL
 GLENURQUHART ROAD
 INVERNESS IV3 5NX
 Tel: (01463) 702250
 www.highland.gov.uk

© Crown Copyright. The Highland Council 100023369 2005.
 All OS base maps are the most up-to-date available to The Highland Council at the time of the production of this Local Plan. In some instances they may not reflect exactly what is on the ground and have not been altered in any way by the Council.
 Information provided by other agencies for use in determining some of the mapped features is also the most up-to-date available to The Highland Council at the time of the production of this Local Plan.




1:380,000
NORTH

1 cm equals 3,800 m

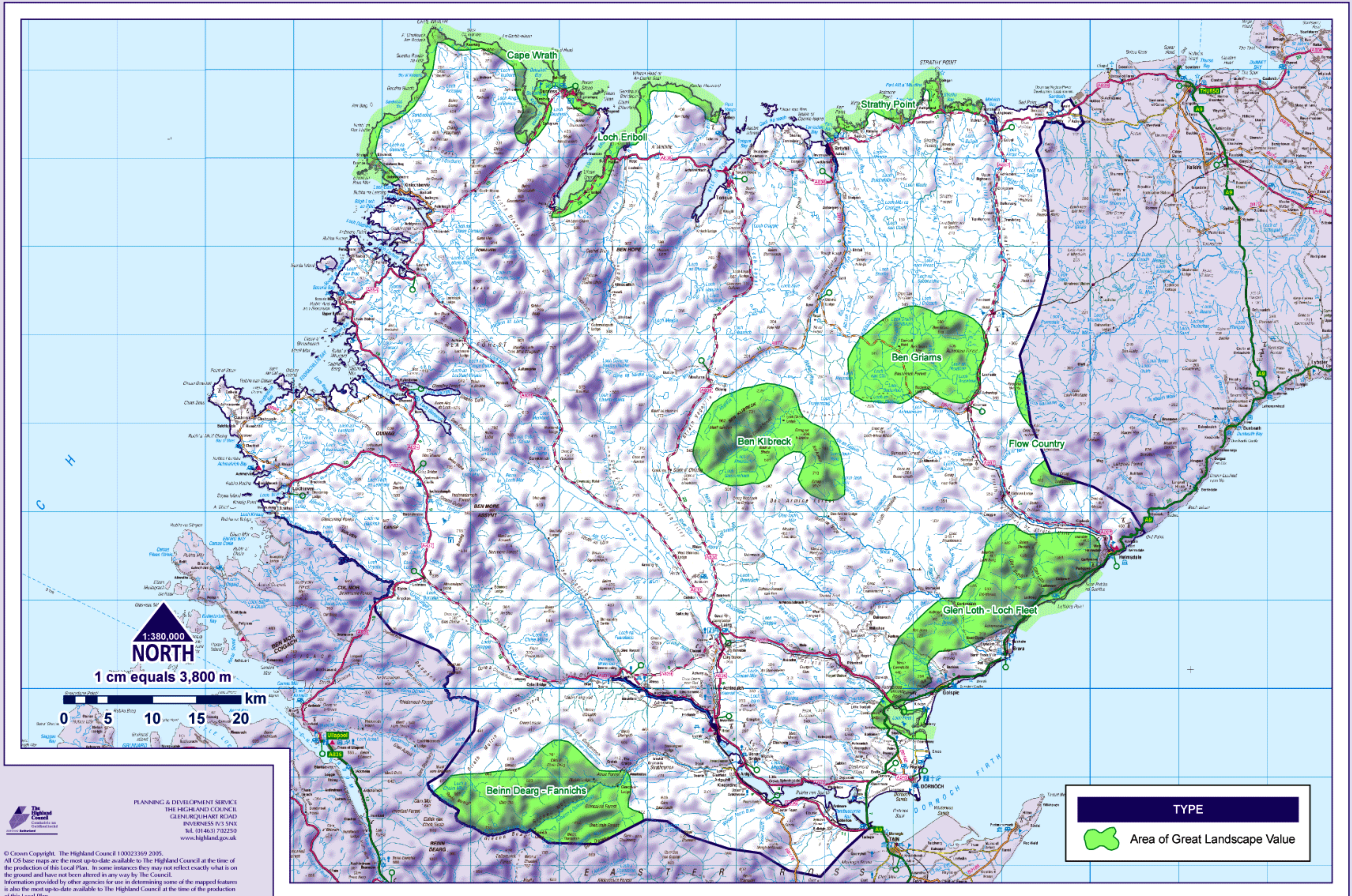
0 5 10 15 20 km

TYPE

 Inventoried Semi-Natural Woodland

 **PLANNING & DEVELOPMENT SERVICE**
 THE HIGHLAND COUNCIL
 GLENQUHART ROAD
 INVERNESS IV3 5NX
 Tel: (01463) 702250
 www.highland.gov.uk

© Crown Copyright. The Highland Council 100023369 2005.
 All OS base maps are the most up-to-date available to The Highland Council at the time of the production of this Local Plan. In some instances they may not reflect exactly what is on the ground and have not been altered in any way by the Council.
 Information provided by other agencies for use in determining some of the mapped features is also the most up-to-date available to The Highland Council at the time of the production of this Local Plan.




 PLANNING & DEVELOPMENT SERVICE
 THE HIGHLAND COUNCIL
 GLENBUQUHART ROAD
 INVERNESS IV3 5NX
 Tel: (01463) 702250
 www.highland.gov.uk

© Crown Copyright. The Highland Council 100023369 2005.
 All OS base maps are the most up-to-date available to The Highland Council at the time of the production of this Local Plan. In some instances they may not reflect exactly what is on the ground and have not been altered in any way by the Council.
 Information provided by other agencies for use in determining some of the mapped features is also the most up-to-date available to The Highland Council at the time of the production of this Local Plan.