

Position in Settlement Hierarchy	Small Villages and communities of dispersed housing
2005 Estimated Population	189
Housing Completions 2000-2006	13
Primary/Secondary School Capacity	111% / 71%
Water Capacity	Currently 13 units of capacity with additional strategic capacity projects planned between 2007-2010
Sewerage Capacity	Limited capacity

Prospects

In 1993 the 21,000-acre North Lochinver Estate was the first crofting area to be bought out by a local crofters trust. The estate comprises thirteen townships located off the scenic B869 north of Lochinver. Single house developments or applications for small scale developments are best assessed on their individual merits against the policy framework. However the Assynt Crofters Trust are supporting the allocation of two sites on common grazings land and these allocations are the appropriate locations for more substantial levels of housing within North Assynt. The school roll projections estimate that the primary school will remain slightly over capacity until 2009 and will need to be monitored.

Development Factors

- This area lies within a National Scenic Area so particular care needs to be taken with regards to sensitive siting and design of development.

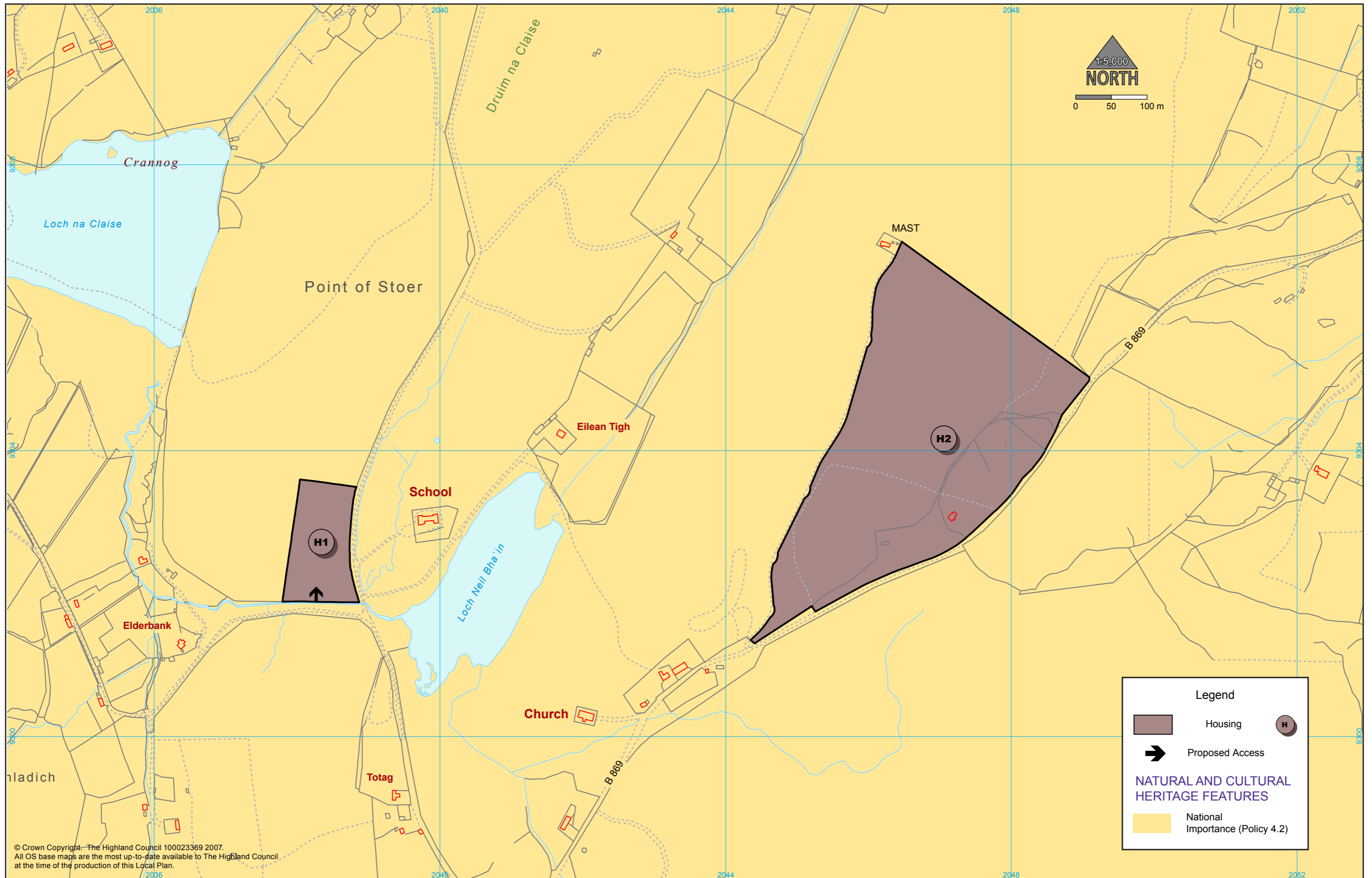
Developer Requirements

- The road leading north of Clashnessie Bay is fragile and therefore developer contributions will be required.

Site Allocations

Site Ref.	Site Area	Location	Housing Capacity	Developer Requirements
H1	1.5ha	West of the school	6 units	Remains of the boundary stone wall should be left as intact as possible and any alteration requires an extensive photographic record to be made recording the feature in its original setting. Housing should be dispersed in similar density to surrounding area, and should be single-storey and simple in design.
H2	10ha	South of the radio mast	12 units	This is undulating croftan landscape with some rocky outcrops. Development should be dispersed and sympathetically sited within the landform to minimise earthworks and the need for blasting. Also the heights, rooflines and orientations could be varied to reflect the underlying terrain.

(Housing capacities are indicative only and given on the basis of likely development densities.)



© Crown Copyright. The Highland Council 100023369 2007.
 All OS base maps are the most up-to-date available to The Highland Council
 at the time of the production of this Local Plan.