

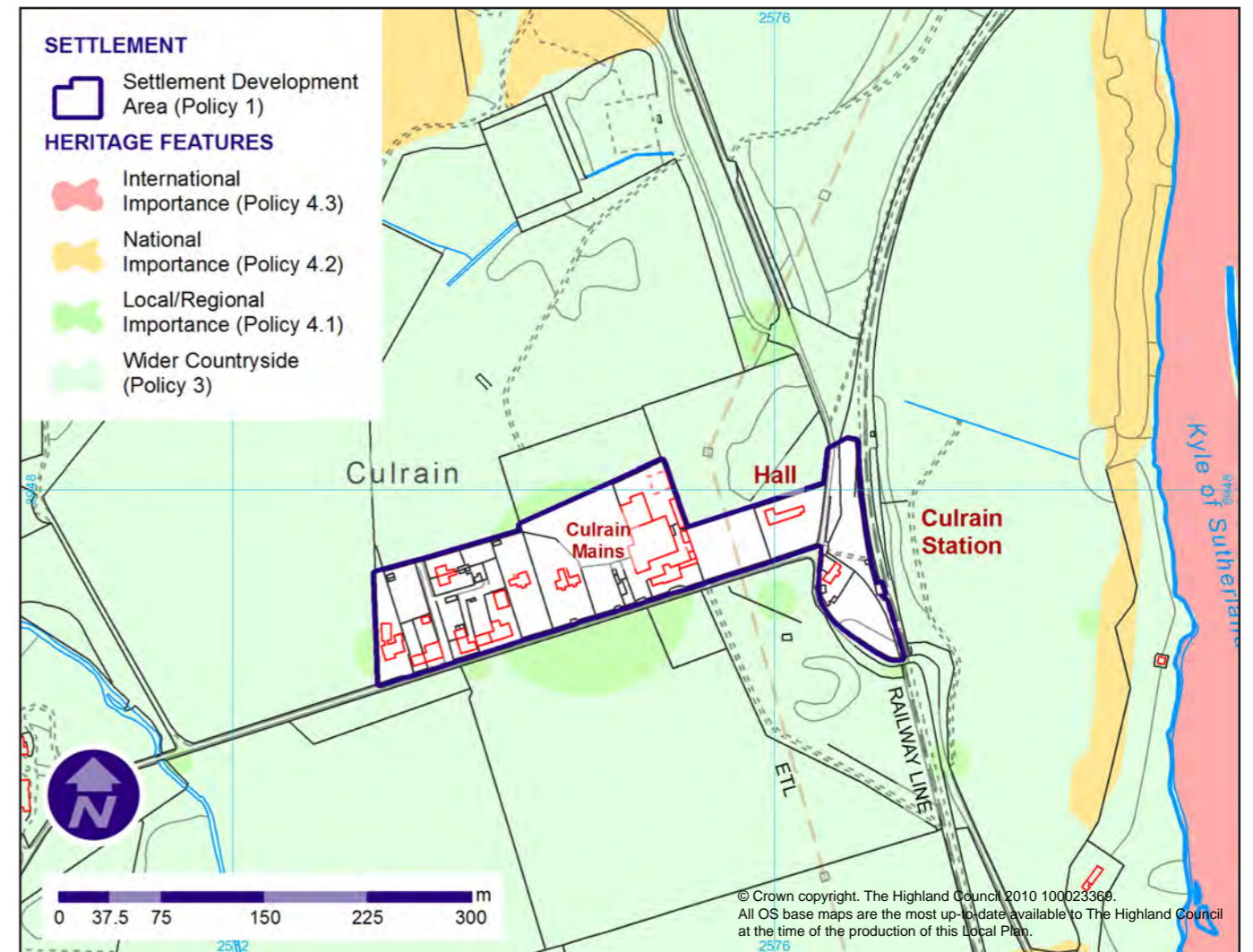
Position in Settlement Hierarchy	Small Village
2005 Estimated Population	15
Housing Completions 2000-2007	2
Primary School Capacity/Secondary School Capacity	59% / 68%
Water Capacity	Limited spare capacity
Sewerage Capacity	No public sewerage system

Prospects

Culrain is a small centre with a tight settlement form. The settlement development area has been drawn to allow limited infill development, to safeguard the open character of adjoining land and to safeguard the setting of Carbisdale Castle.

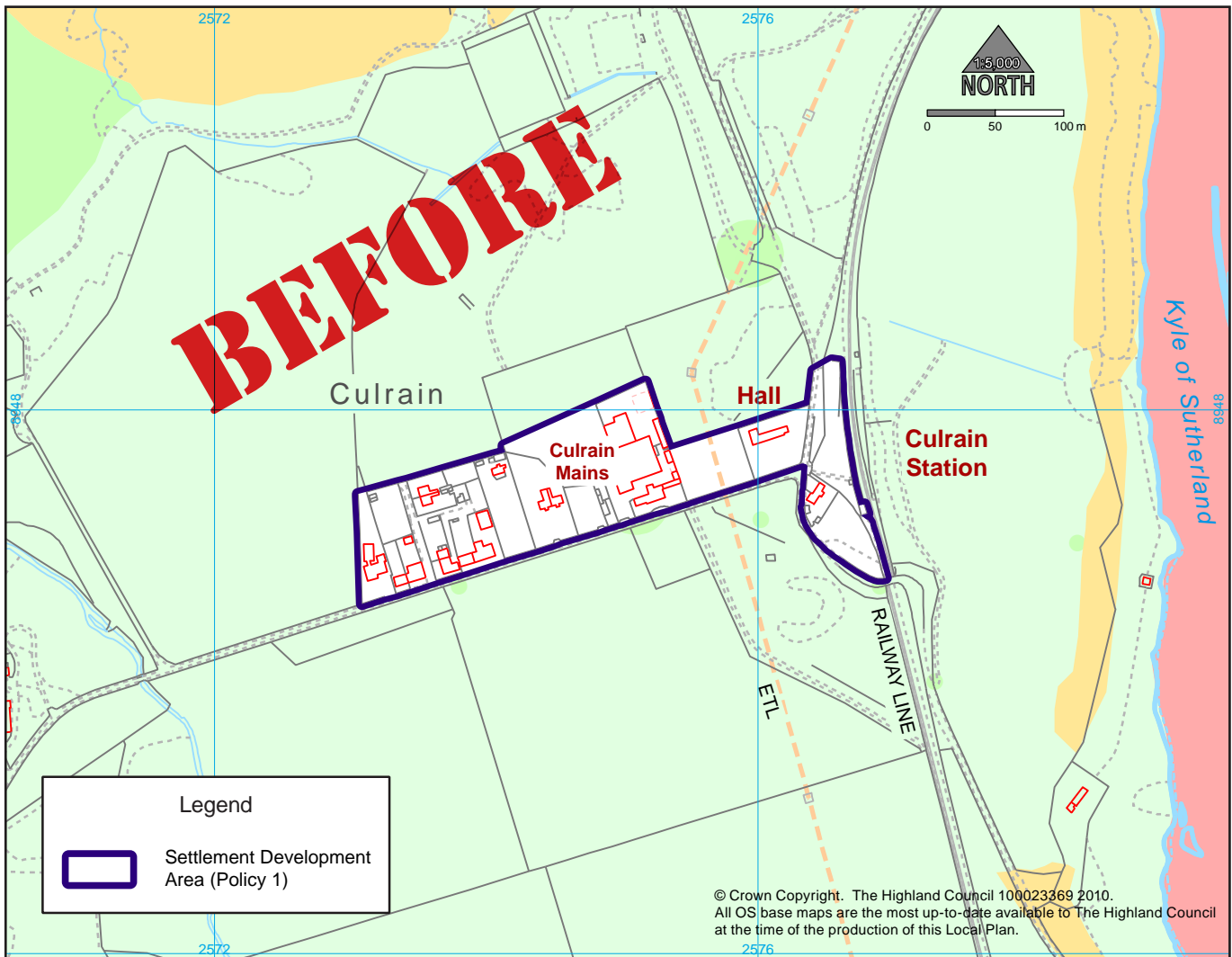
Development Factors

- Local road improvements where a network deficiency is created or worsened by a particular proposal;
- Development proposals will have regard to the proximity of the River Oykel Special Area of Conservation (SAC);
- Any developments served by private waste water system (in compliance with General Policy 7) will require to drain to land to safeguard water bodies and the River Oykel SAC.



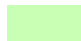
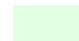


INSET 8.4 : CULRAIN

Inset 8.4 : Cùil Raithin



NATURAL , BUILT AND CULTURAL HERITAGE FEATURES

	International Importance (Policy 4.3)		National Importance (Policy 4.2)		Local/Regional Importance (Policy 4.1)		Wider Countryside (Policy 3)
--	---------------------------------------	---	----------------------------------	---	--	---	------------------------------