

International Importance (Policy 4.3)

Special Protection Areas - SPA (including proposed)	50
Special Areas of Conservation - SAC (including candidate)	51
Ramsar	52

National Importance (Policy 4.2)

Scheduled Ancient Monuments	53
Category A Listed Buildings	54
National Nature Reserves	55
Sites of Special Scientific Interest	56
Inventoried Designed Landscapes	57
National Scenic Areas	58
Inventoried Ancient Woodland and Long-Established Woodland (Semi-Natural)	59
Tree Preservation Orders	60

Local/Regional Importance (Policy 4.1)

Areas of Great Landscape Value (AGLV)	61
Conservation Area	62
Category B and C(S) Listed Buildings	63
Historic Environment Record Archaeological Sites	64
War Memorials	65
Settlement Setting	66
Inventoried Semi-Natural Woodland and Long-Established Woodland (Plantation)	67
Views Over Open Water	68
Remote Landscapes of Value for Recreation	69

Natural, Built & Cultural Heritage Features

The Background Maps set out the locations and information about these different features in so far as they have been mapped digitally on our system. However, similar features identified by the Council as being present at the time a proposal is considered, will still be subject to protection under Policy 4.

A full definition of all of these features can be found in the Written Statement of the Plan.

Consultation Areas & Physical Constraints

Details of the Consultation Areas and Physical Constraints - relevant to other plan policies - are also shown in this section.

Updating of Background Maps

These maps may be updated should circumstances change during the Plan period, such as additional features being identified or existing ones revised through the Council's work.

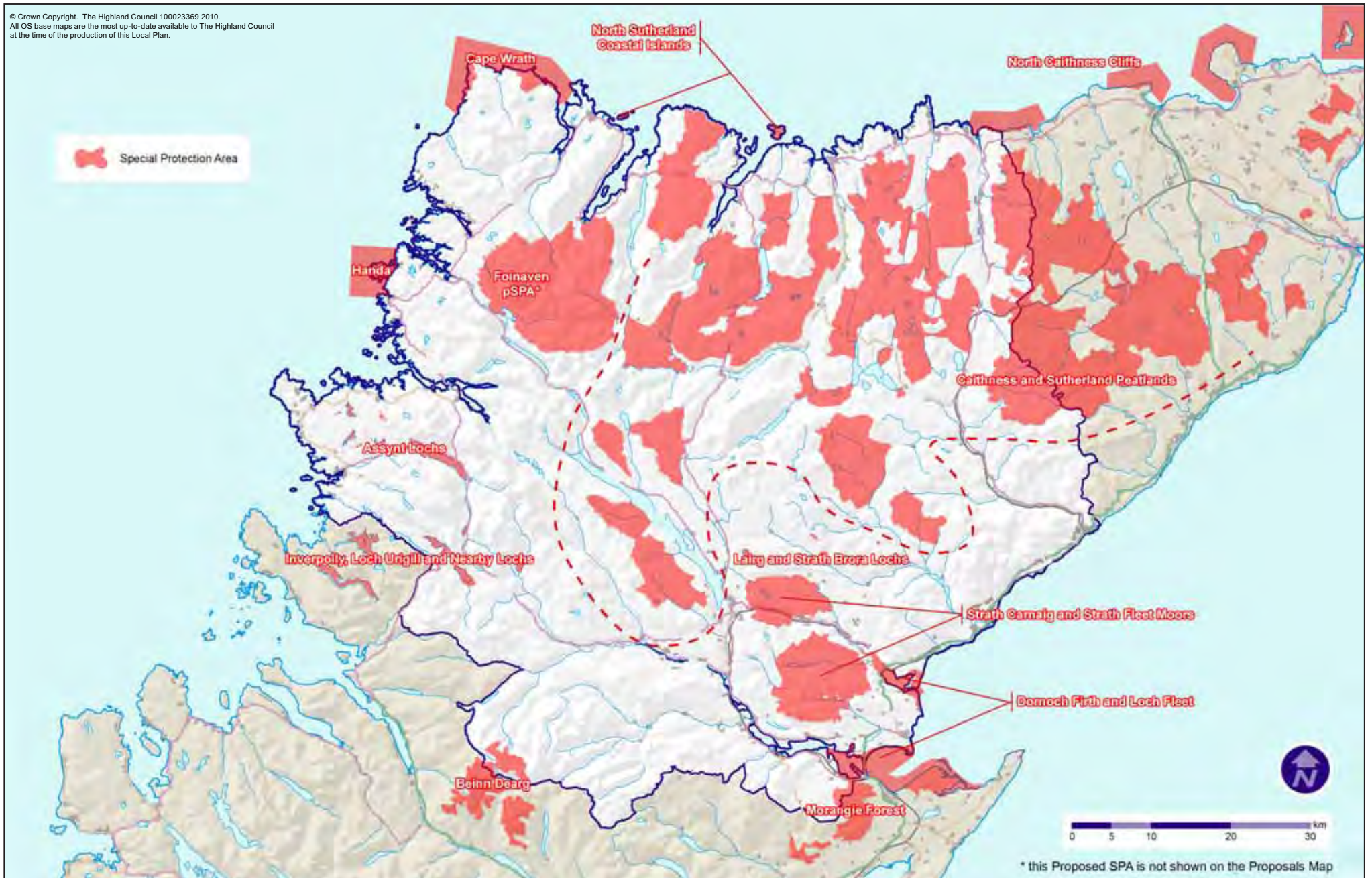
Consultation Areas (Policies 9 and 10)

Flood Risk (9)	70
Hazardous Sites (10)	71
Trunk, A Roads and Rail Lines (10)	72
Trunk Water Mains and Water Catchment Areas (10)	73

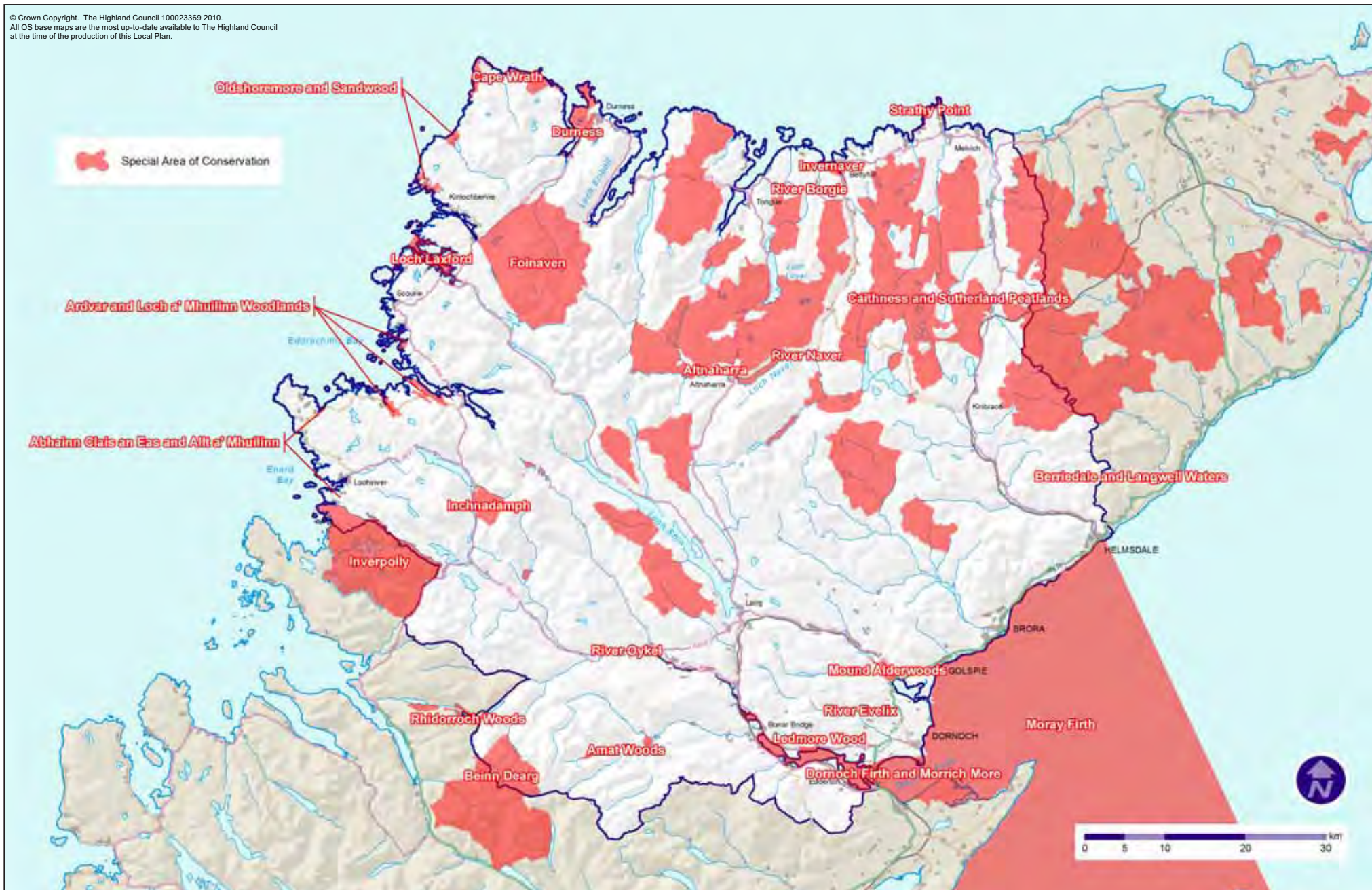
Physical Constraints (Policies 8 and 10)

Radon Gas Area (10)	74
Sewage Treatment Works (10)	75
Waste Management Facilities (8 & 10)	76
EU Shellfish Directive Waters (10)	77

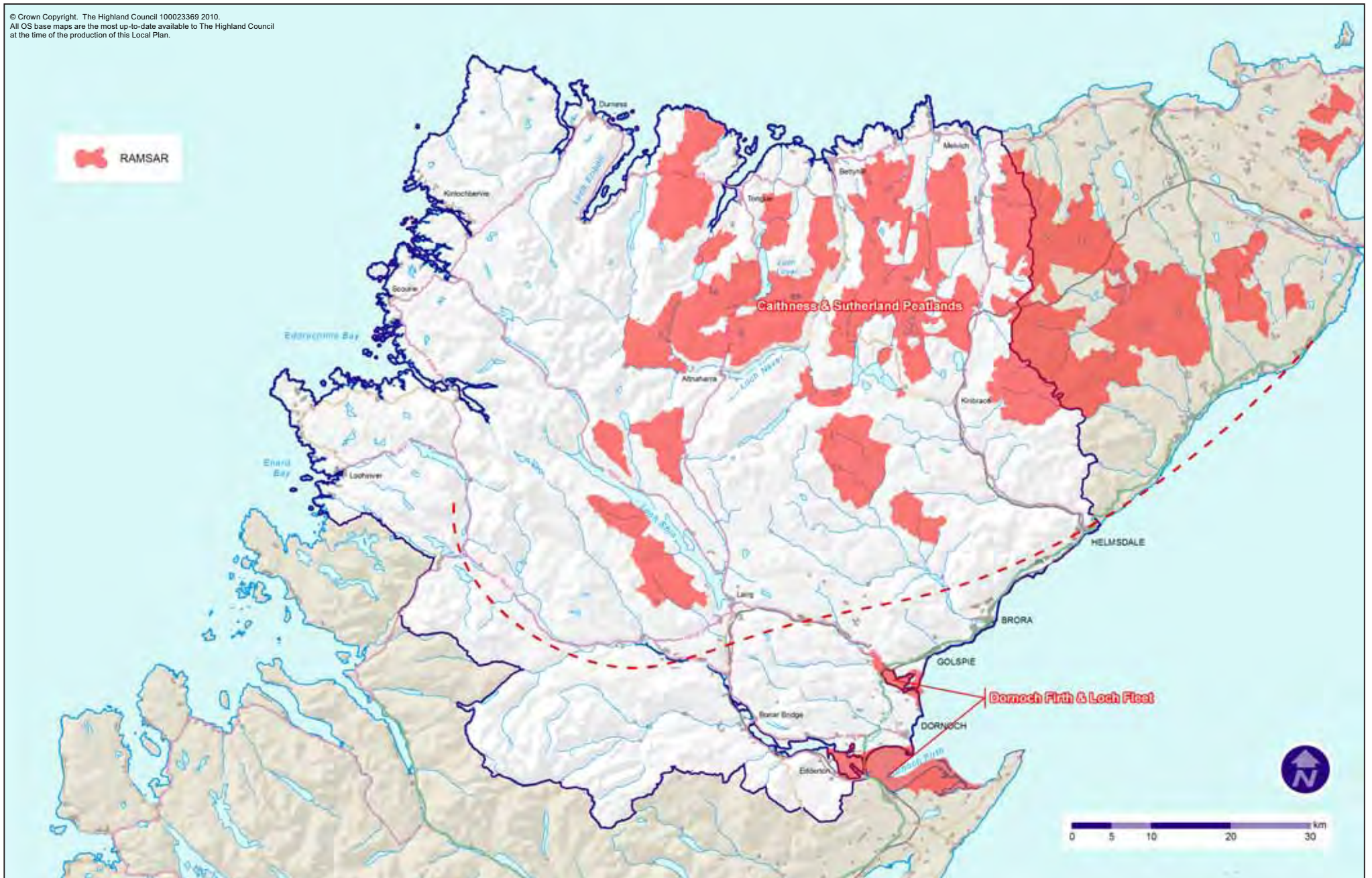
© Crown Copyright. The Highland Council 100023369 2010.
All OS base maps are the most up-to-date available to The Highland Council
at the time of the production of this Local Plan.



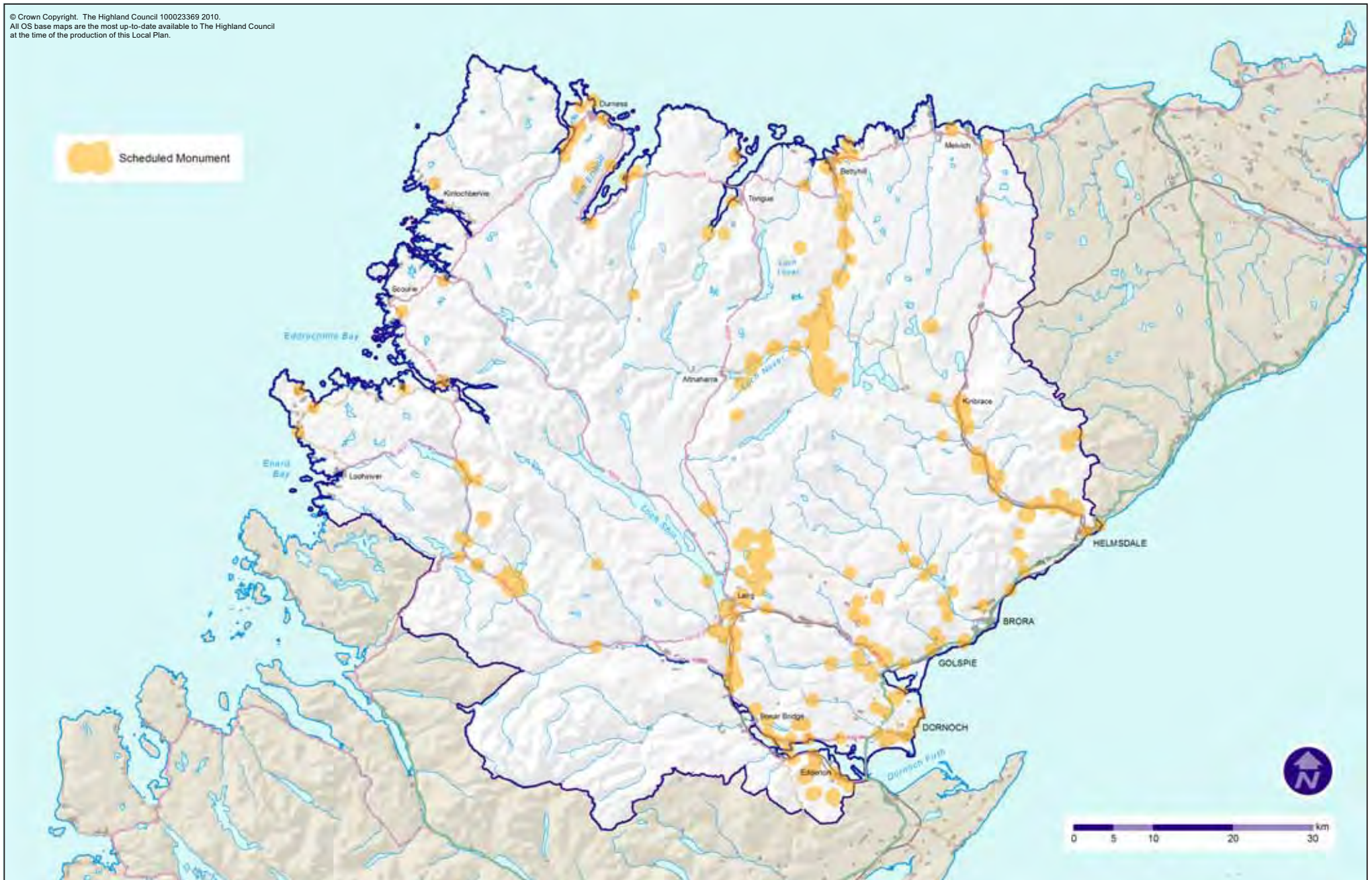
© Crown Copyright. The Highland Council 100023369 2010.
All OS base maps are the most up-to-date available to The Highland Council
at the time of the production of this Local Plan.



© Crown Copyright. The Highland Council 100023369 2010.
All OS base maps are the most up-to-date available to The Highland Council
at the time of the production of this Local Plan.



© Crown Copyright. The Highland Council 100023369 2010.
All OS base maps are the most up-to-date available to The Highland Council
at the time of the production of this Local Plan.



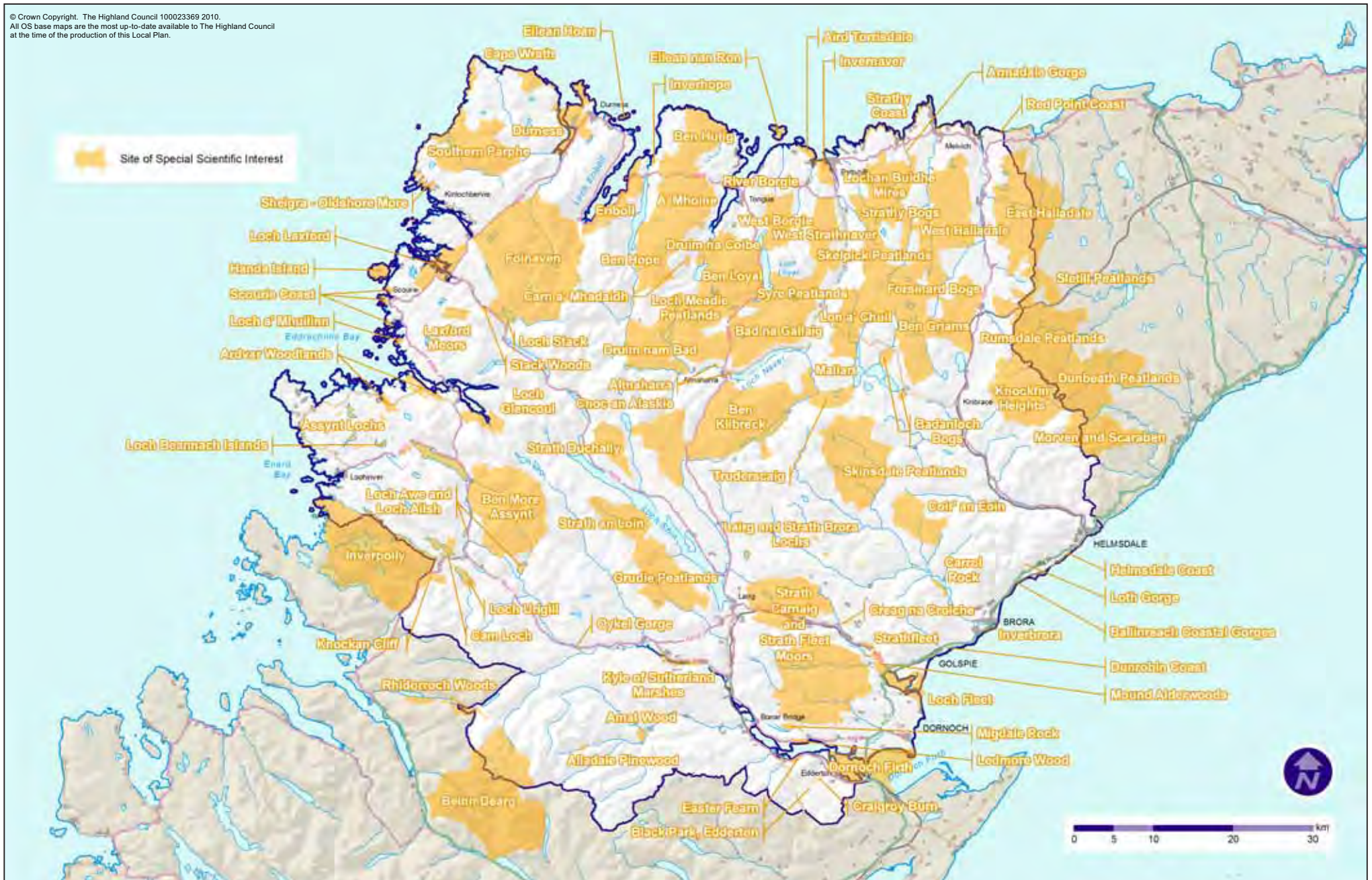
© Crown Copyright. The Highland Council 100023369 2010.
All OS base maps are the most up-to-date available to The Highland Council
at the time of the production of this Local Plan.



© Crown Copyright. The Highland Council 100023369 2010.
All OS base maps are the most up-to-date available to The Highland Council
at the time of the production of this Local Plan.



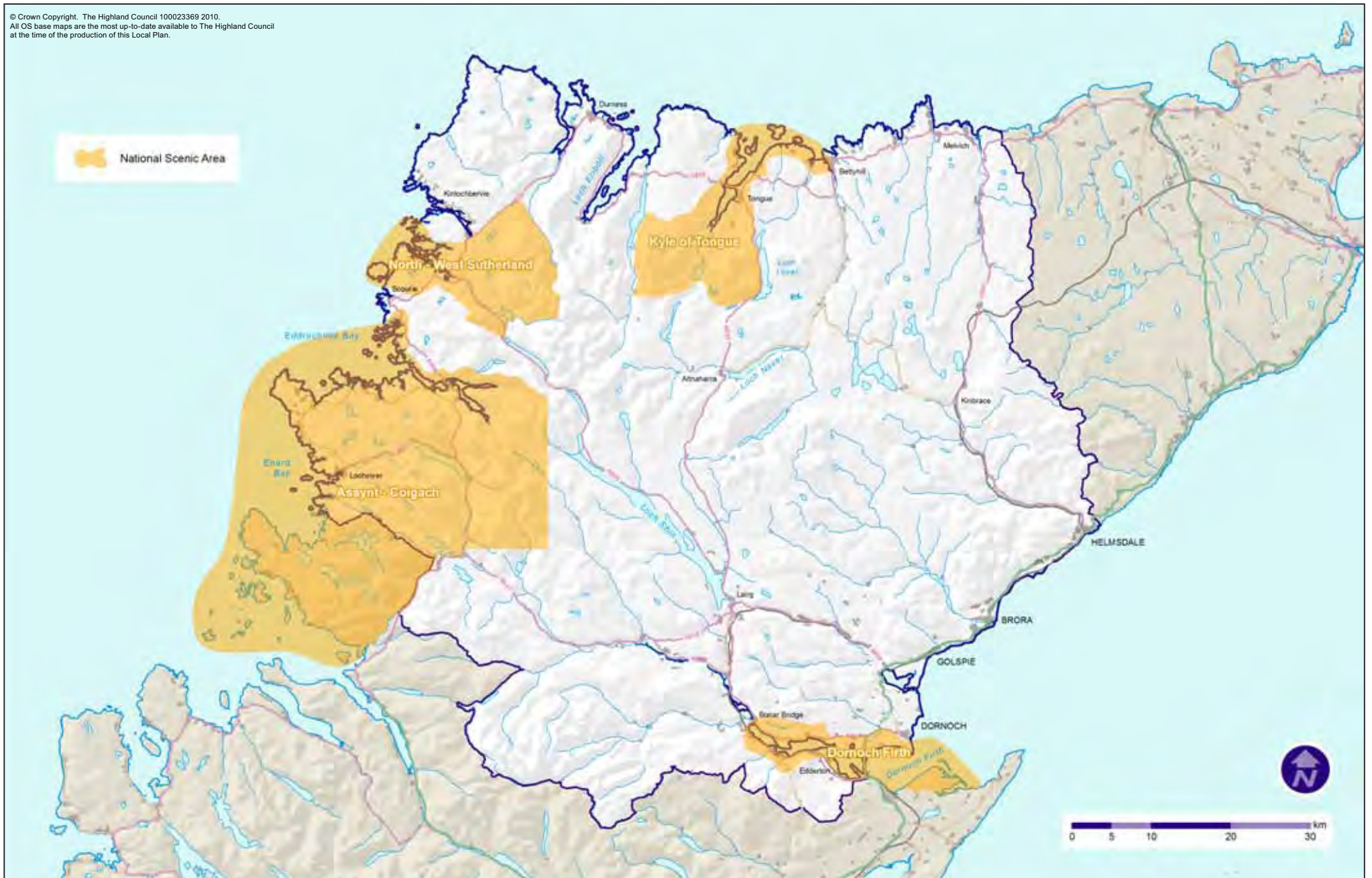
© Crown Copyright. The Highland Council 100023369 2010.
All OS base maps are the most up-to-date available to The Highland Council at the time of the production of this Local Plan.



© Crown Copyright. The Highland Council 100023369 2010.
All OS base maps are the most up-to-date available to The Highland Council
at the time of the production of this Local Plan.



© Crown Copyright. The Highland Council 100023369 2010.
All OS base maps are the most up-to-date available to The Highland Council
at the time of the production of this Local Plan.



© Crown Copyright. The Highland Council 100023369 2010.
All OS base maps are the most up-to-date available to The Highland Council
at the time of the production of this Local Plan.



Tree Preservation Order

© Crown Copyright. The Highland Council 100023369 2010.
All OS base maps are the most up-to-date available to The Highland Council
at the time of the production of this Local Plan.



© Crown Copyright. The Highland Council 100023369 2010.
All OS base maps are the most up-to-date available to The Highland Council at the time of the production of this Local Plan.

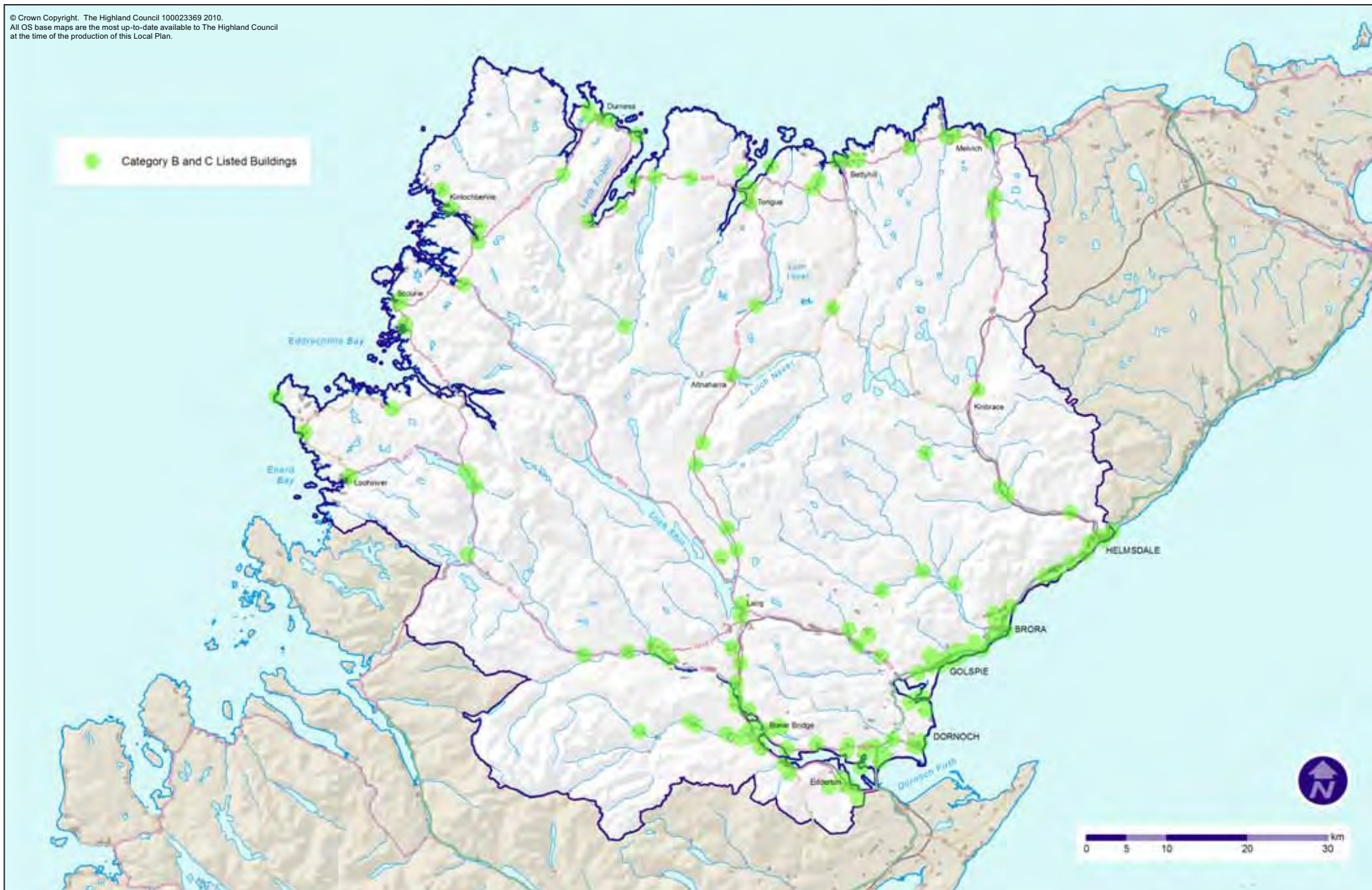


Conservation Area

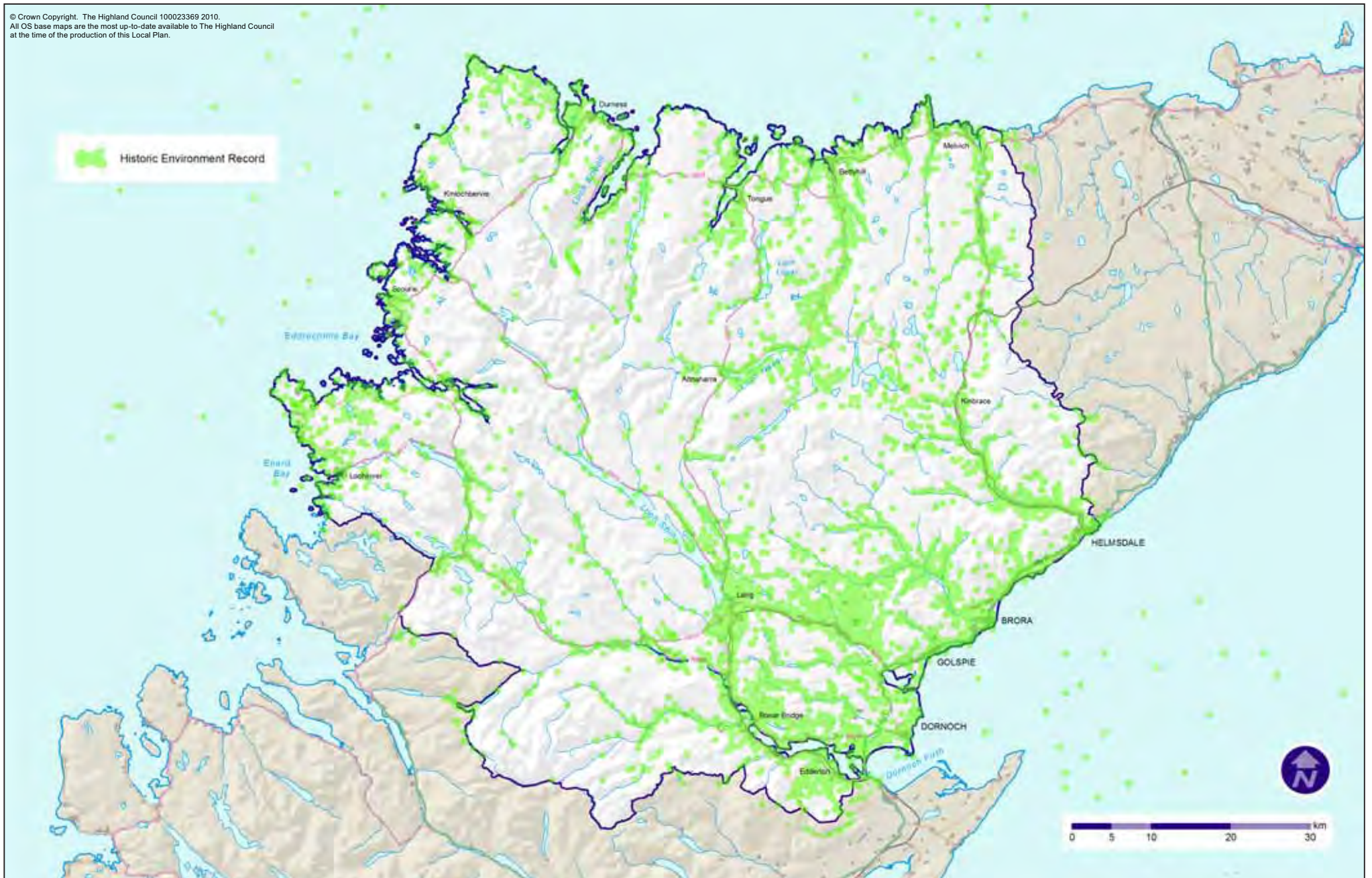
© Crown Copyright. The Highland Council 100023369 2010.
All OS base maps are the most up-to-date available to The Highland Council
at the time of the production of this Local Plan.



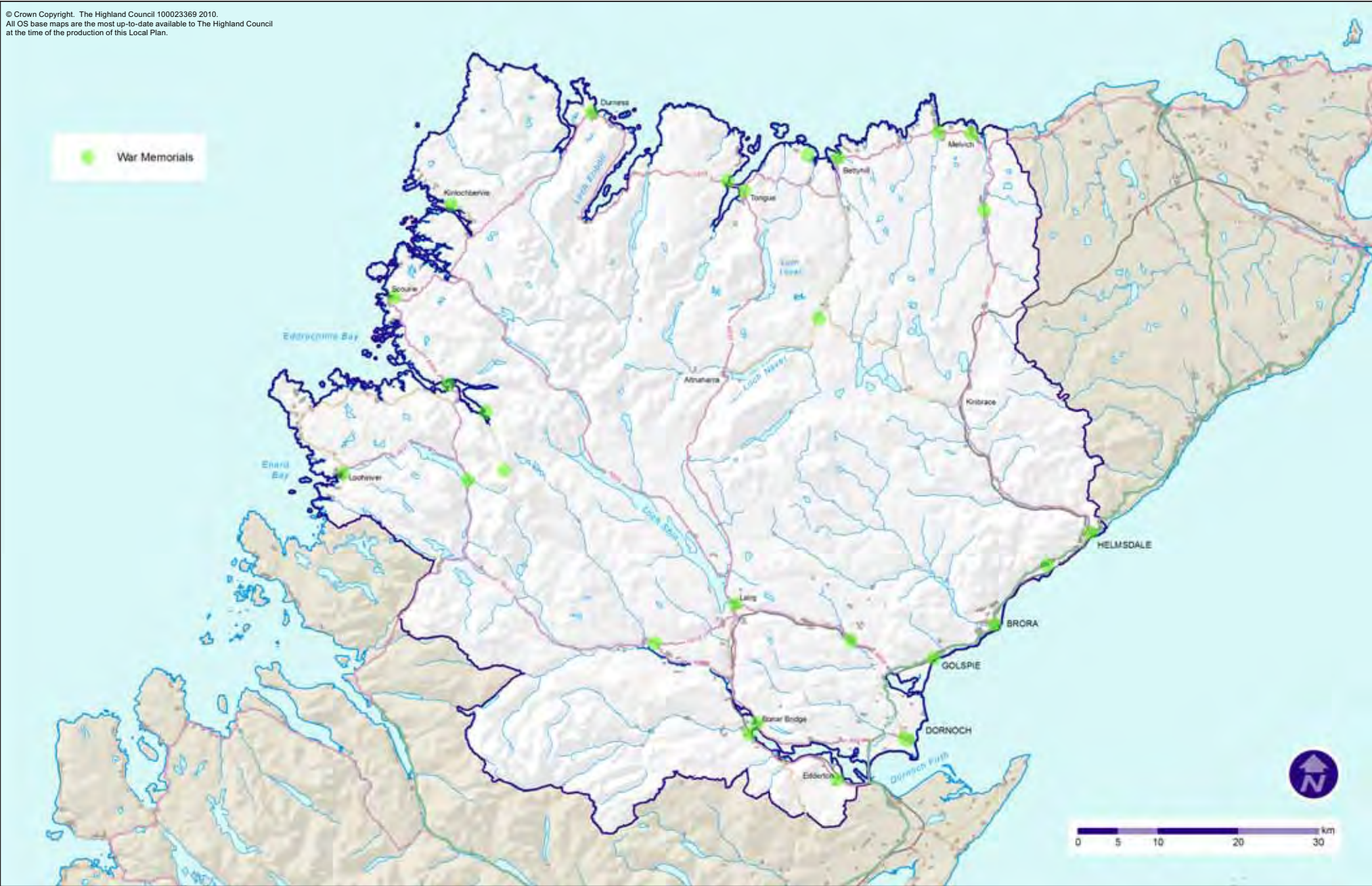
© Crown Copyright. The Highland Council 100023369 2010.
All OS base maps are the most up-to-date available to The Highland Council
at the time of the production of this Local Plan.



© Crown Copyright. The Highland Council 100023369 2010.
All OS base maps are the most up-to-date available to The Highland Council
at the time of the production of this Local Plan.

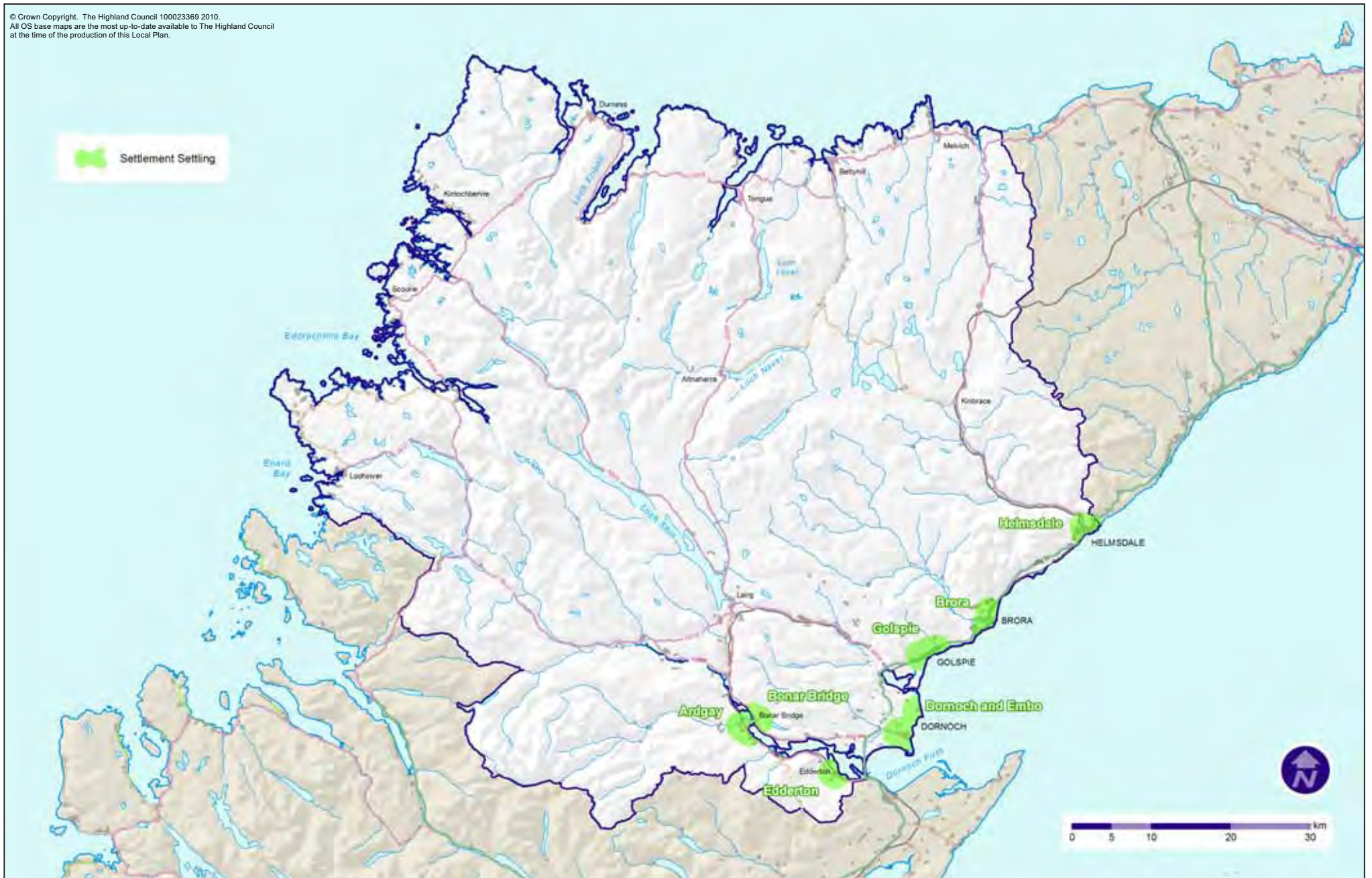


© Crown Copyright. The Highland Council 100023369 2010.
All OS base maps are the most up-to-date available to The Highland Council
at the time of the production of this Local Plan.

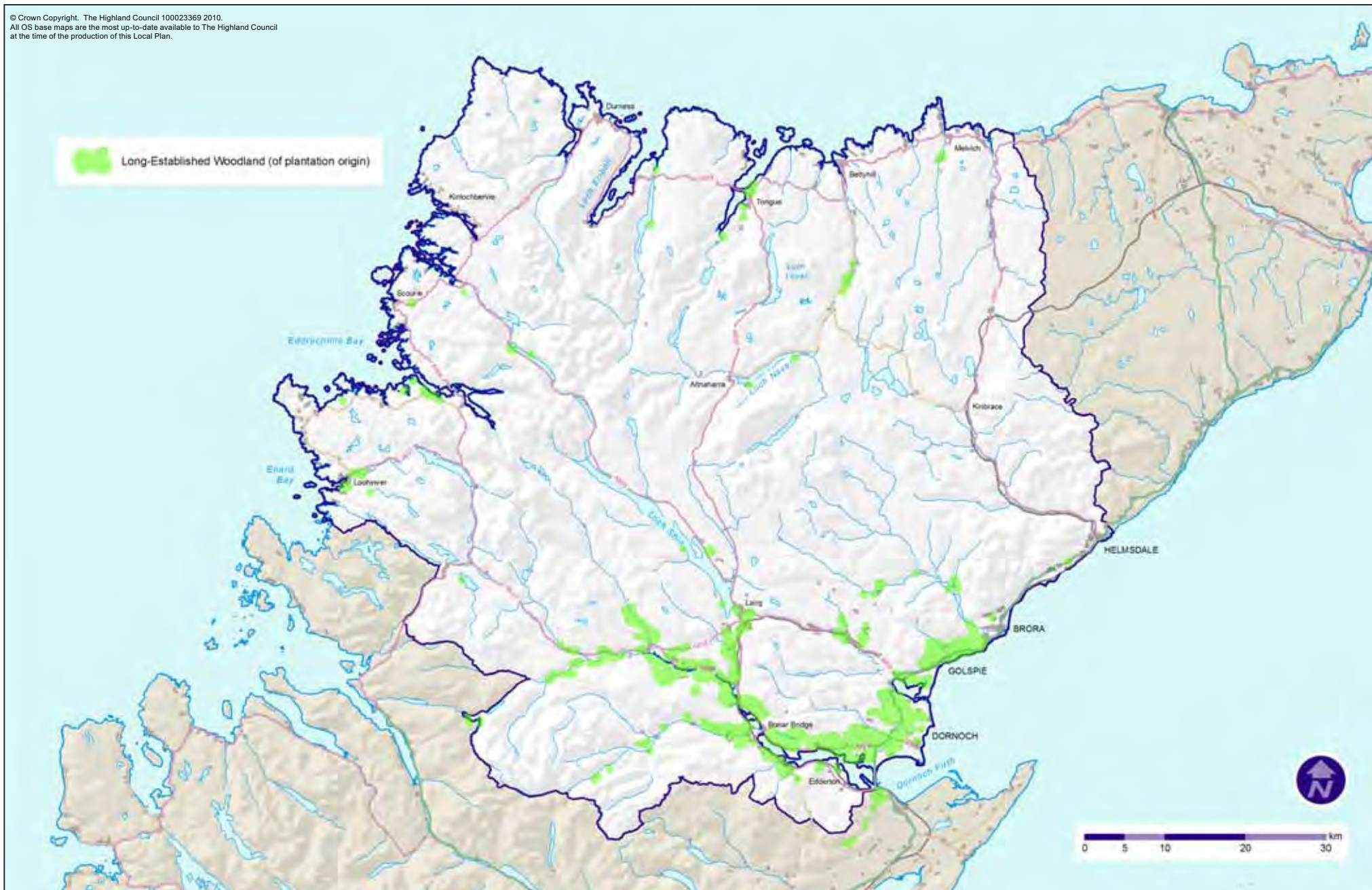


Settlement Setting

© Crown Copyright. The Highland Council 100023369 2010.
All OS base maps are the most up-to-date available to The Highland Council
at the time of the production of this Local Plan.



© Crown Copyright. The Highland Council 100023369 2010.
All OS base maps are the most up-to-date available to The Highland Council
at the time of the production of this Local Plan.



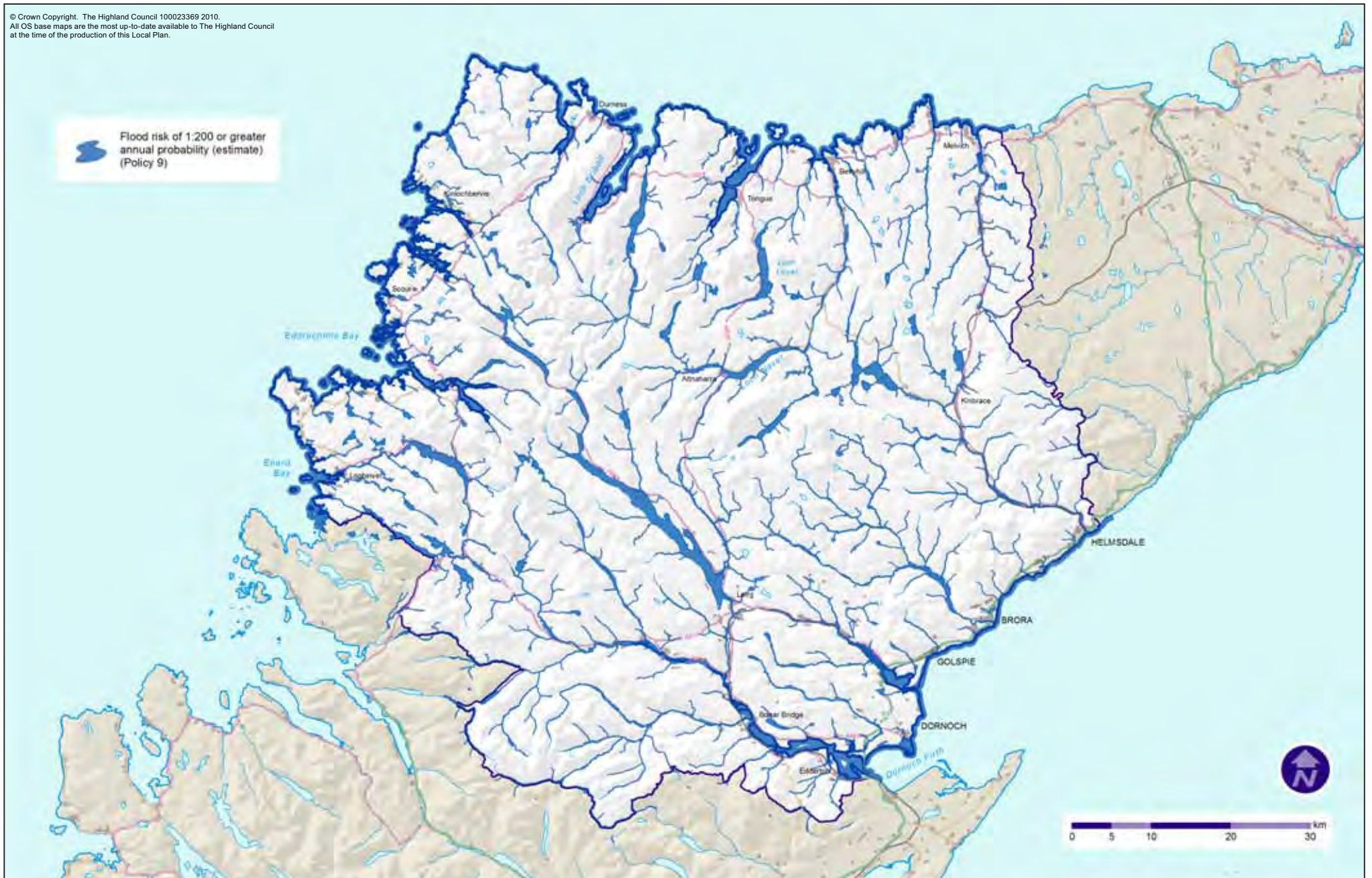
© Crown Copyright. The Highland Council 100023369 2010.
All OS base maps are the most up-to-date available to The Highland Council
at the time of the production of this Local Plan.



© Crown Copyright. The Highland Council 100023369 2010.
All OS base maps are the most up-to-date available to The Highland Council
at the time of the production of this Local Plan.



© Crown Copyright. The Highland Council 100023369 2010.
All OS base maps are the most up-to-date available to The Highland Council
at the time of the production of this Local Plan.



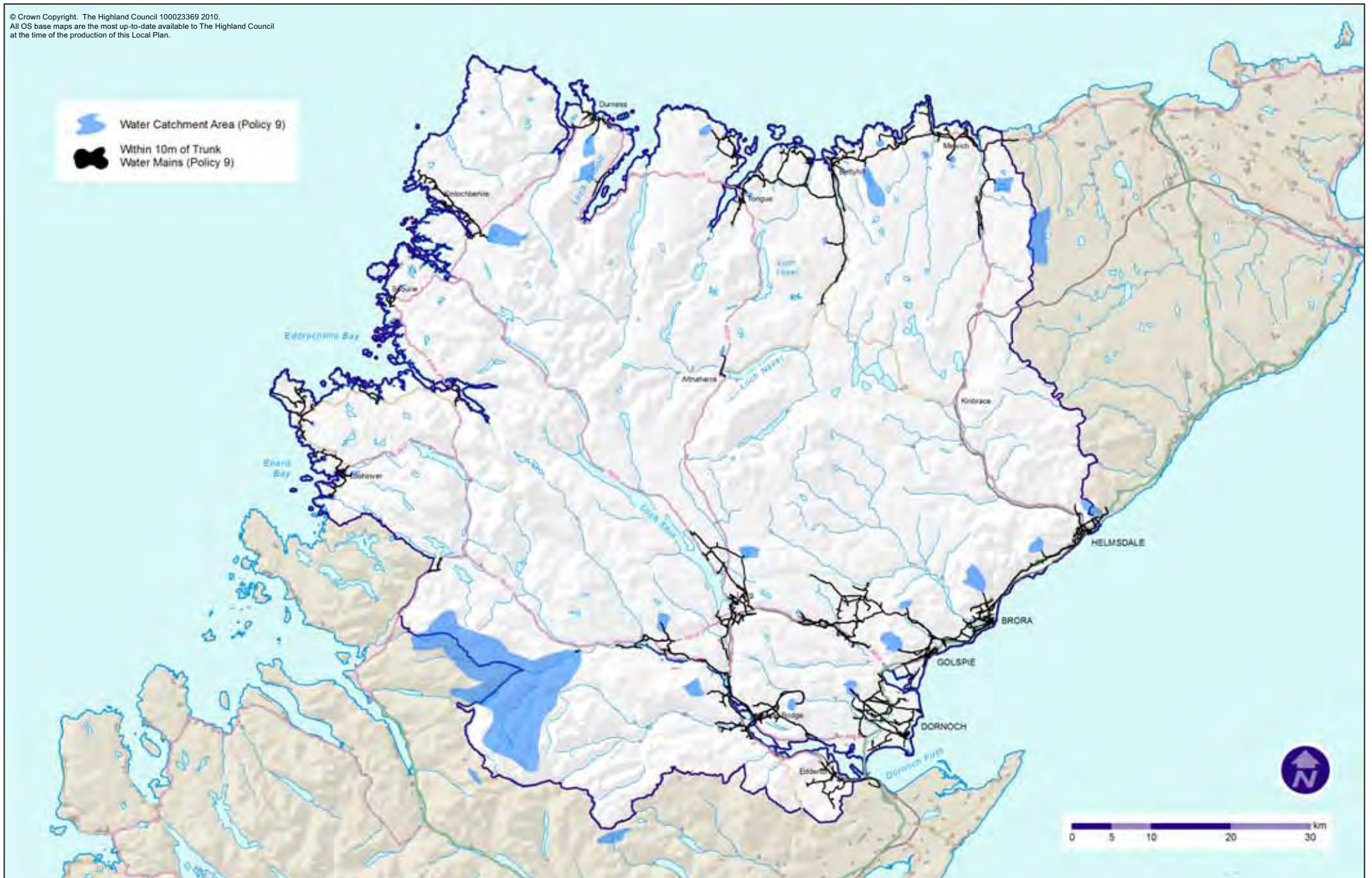
© Crown Copyright. The Highland Council 100023369 2010.
 All OS base maps are the most up-to-date available to The Highland Council
 at the time of the production of this Local Plan.



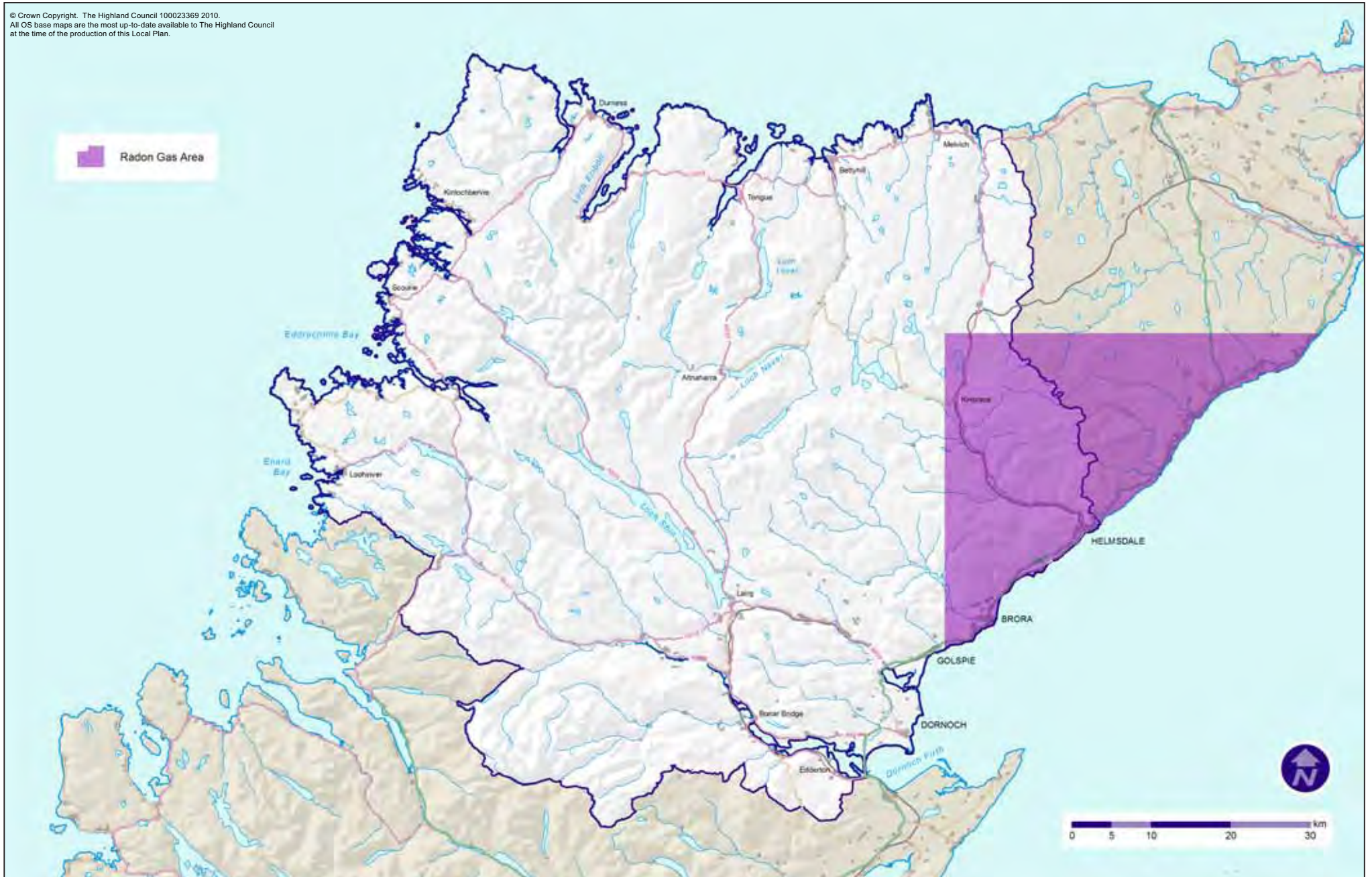
© Crown Copyright. The Highland Council 100023369 2010.
All OS base maps are the most up-to-date available to The Highland Council
at the time of the production of this Local Plan.



© Crown Copyright. The Highland Council 100023369 2010.
All OS base maps are the most up-to-date available to The Highland Council
at the time of the production of this Local Plan.



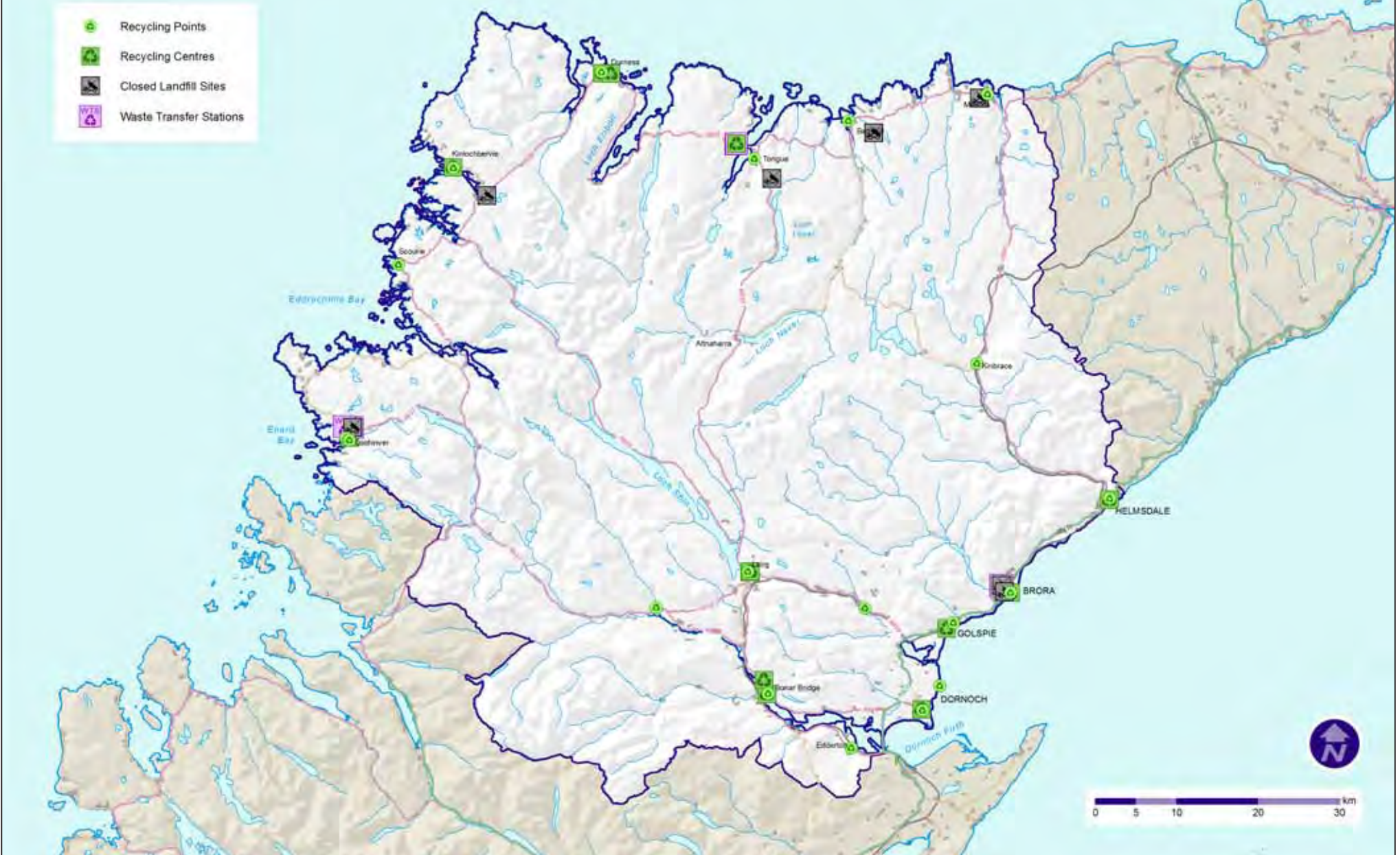
© Crown Copyright. The Highland Council 100023369 2010.
All OS base maps are the most up-to-date available to The Highland Council
at the time of the production of this Local Plan.



© Crown Copyright. The Highland Council 100023369 2010.
All OS base maps are the most up-to-date available to The Highland Council
at the time of the production of this Local Plan.



© Crown Copyright. The Highland Council 100023369 2010.
All OS base maps are the most up-to-date available to The Highland Council
at the time of the production of this Local Plan.



© Crown Copyright. The Highland Council 100023369 2010.
All OS base maps are the most up-to-date available to The Highland Council
at the time of the production of this Local Plan.

