

**(As Continued in Force)
(April 2012)**

Provisions of Local Plan Map(s) as continued in force

The provisions of the Proposals Map (including any inset contained in or accompanying it and the policies and proposals shown on such inset) and related notations, referencing and explanatory text, only to the extent to which those provisions show, illustrate or explain any provision of the local plan which is continued in force by the Parliamentary Order* and as detailed in the Retention Schedule.

*The Town and Country Planning (Continuation in force of Local Plans (Highland) (Scotland) Order 2012)









**The
Highland
Council**
Comhairle na
Gaidhealtachd

SERVING Badenoch & Strathspey

Badenoch and Strathspey LOCAL PLAN

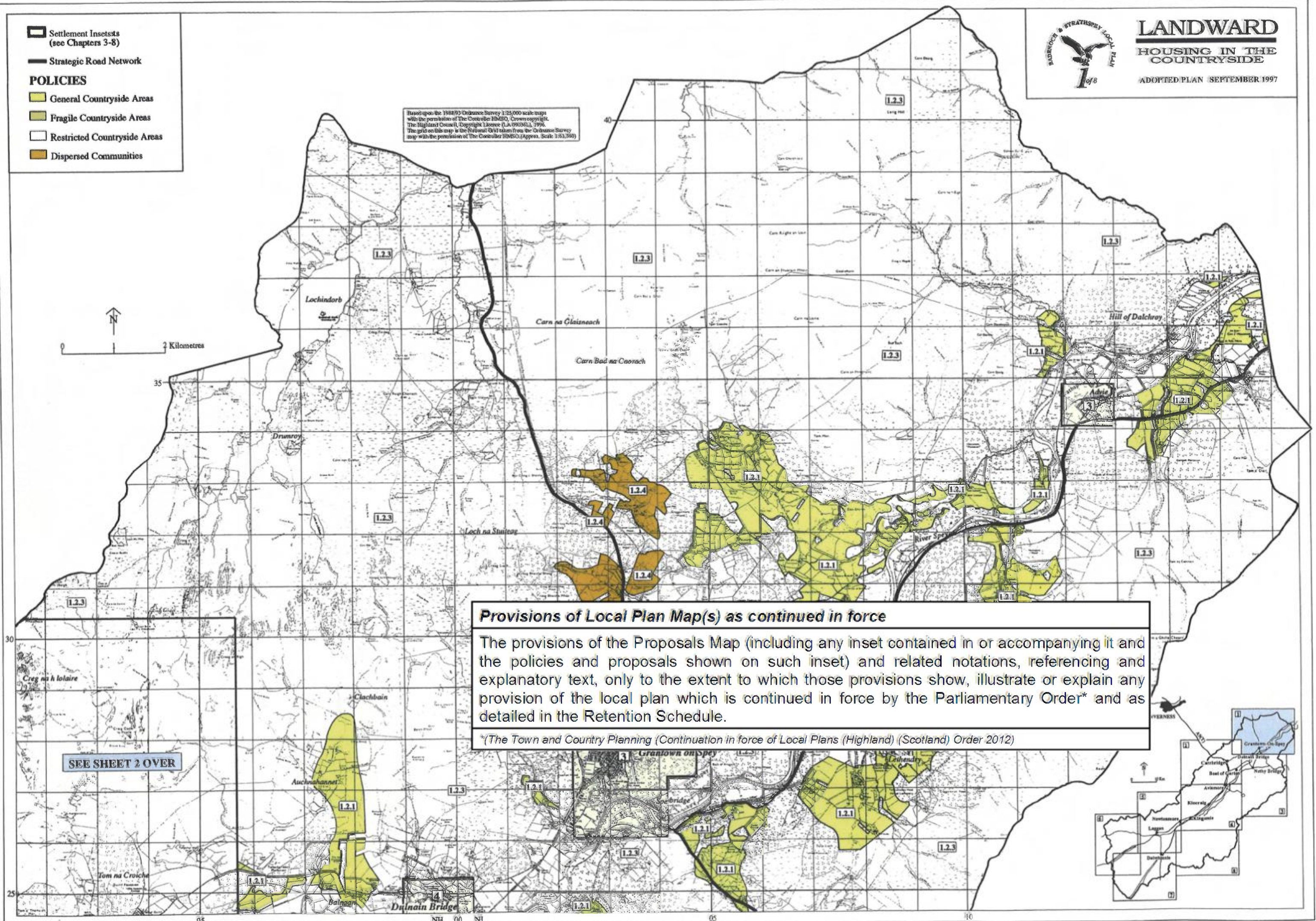
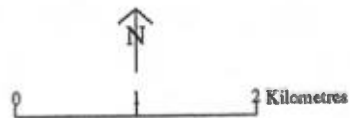
**Adopted Plan
The Highland Council : September 1997**

£40

-  Settlement Insets (see Chapters 3-8)
-  Strategic Road Network
- POLICIES**
-  General Countryside Areas
-  Fragile Countryside Areas
-  Restricted Countryside Areas
-  Dispersed Communities



Based upon the 1988/93 Ordnance Survey 1:25,000 scale maps with the permission of The Controller HMSO, Crown copyright. The Highland Council, Copyright Licence (LA-090361), 1996. The grid on this map is the National Grid taken from the Ordnance Survey map with the permission of The Controller HMSO. (Approx. Scale: 1:63,360)

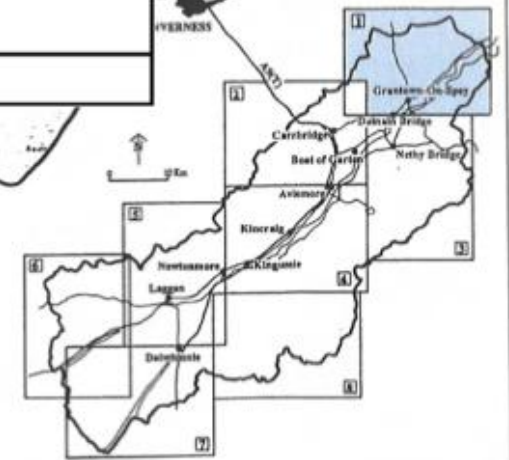


Provisions of Local Plan Map(s) as continued in force

The provisions of the Proposals Map (including any inset contained in or accompanying it and the policies and proposals shown on such inset) and related notations, referencing and explanatory text, only to the extent to which those provisions show, illustrate or explain any provision of the local plan which is continued in force by the Parliamentary Order* and as detailed in the Retention Schedule.

*The Town and Country Planning (Continuation in force of Local Plans (Highland) (Scotland) Order 2012)

SEE SHEET 2 OVER



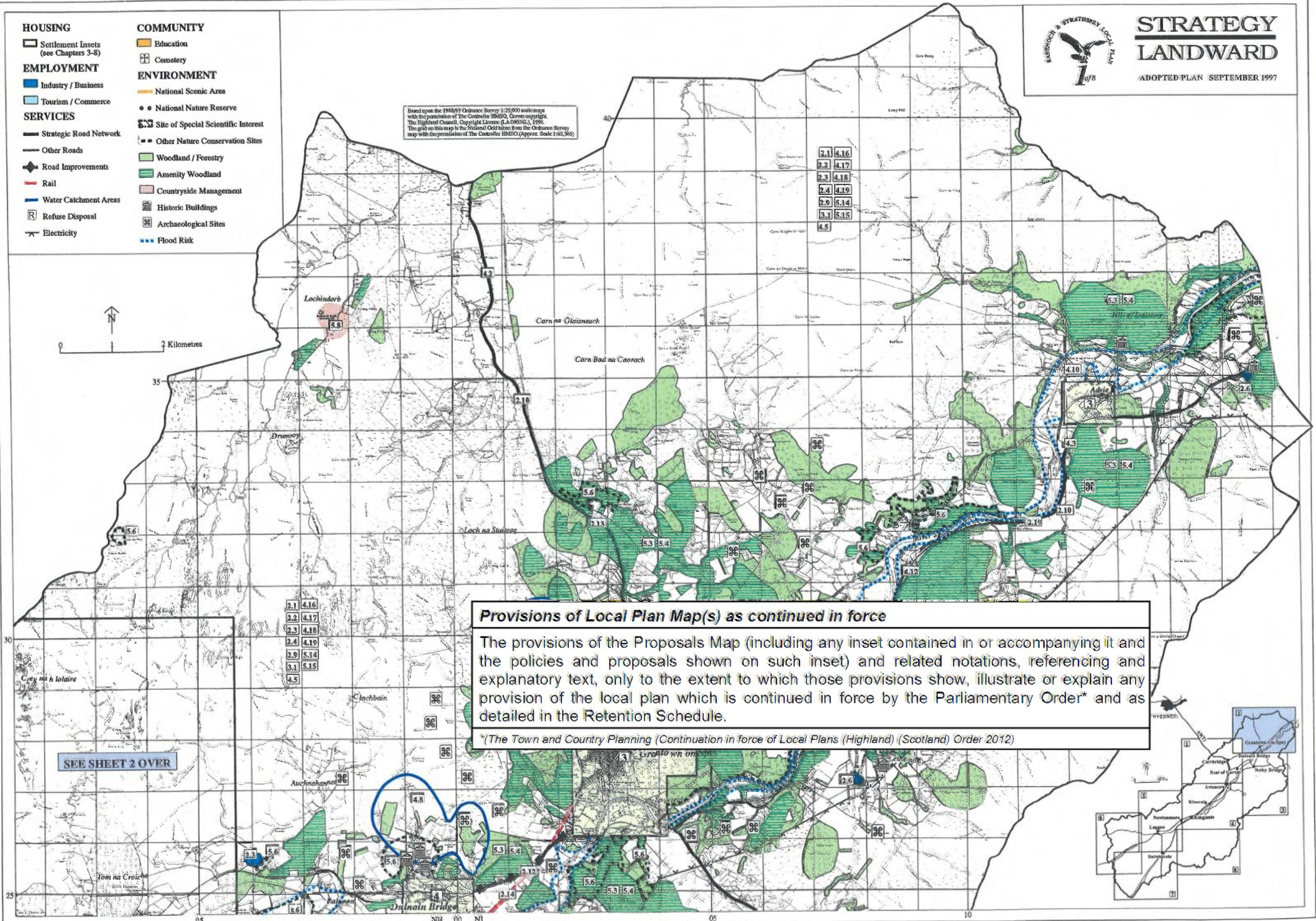


STRATEGY LANDWARD

ADOPTED PLAN SEPTEMBER 1997

- HOUSING**
 - Settlement Insets (see Chapters 3-8)
- EMPLOYMENT**
 - Industry / Business
 - Tourism / Commerce
- SERVICES**
 - Strategic Road Network
 - Other Roads
 - Road Improvements
 - Rail
 - Water Catchment Areas
 - Refuse Disposal
 - Electricity
- COMMUNITY**
 - Education
 - Cemetery
- ENVIRONMENT**
 - National Scenic Area
 - National Nature Reserve
 - Site of Special Scientific Interest
 - Other Nature Conservation Sites
 - Woodland / Forestry
 - Amenity Woodland
 - Countryside Management
 - Historic Buildings
 - Archaeological Sites
 - Flood Risk

Based upon the 1988/93 Ordnance Survey 1:25,000 scale maps with the permission of The Controller HMSO, Crown copyright. The Highland Council, Copyright License (LA090361), 1996. The grid on this map is the National Grid taken from the Ordnance Survey map with the permission of The Controller HMSO. (Approx. Scale 1:63,960)

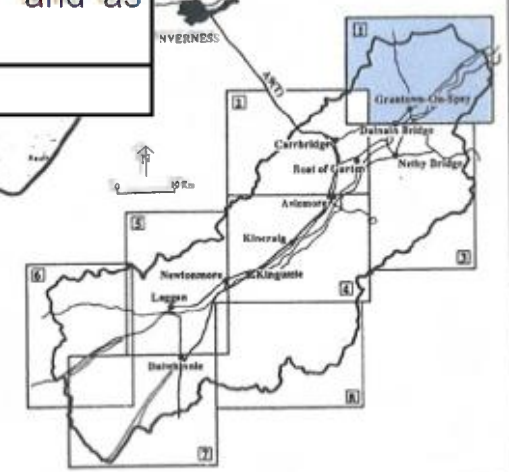


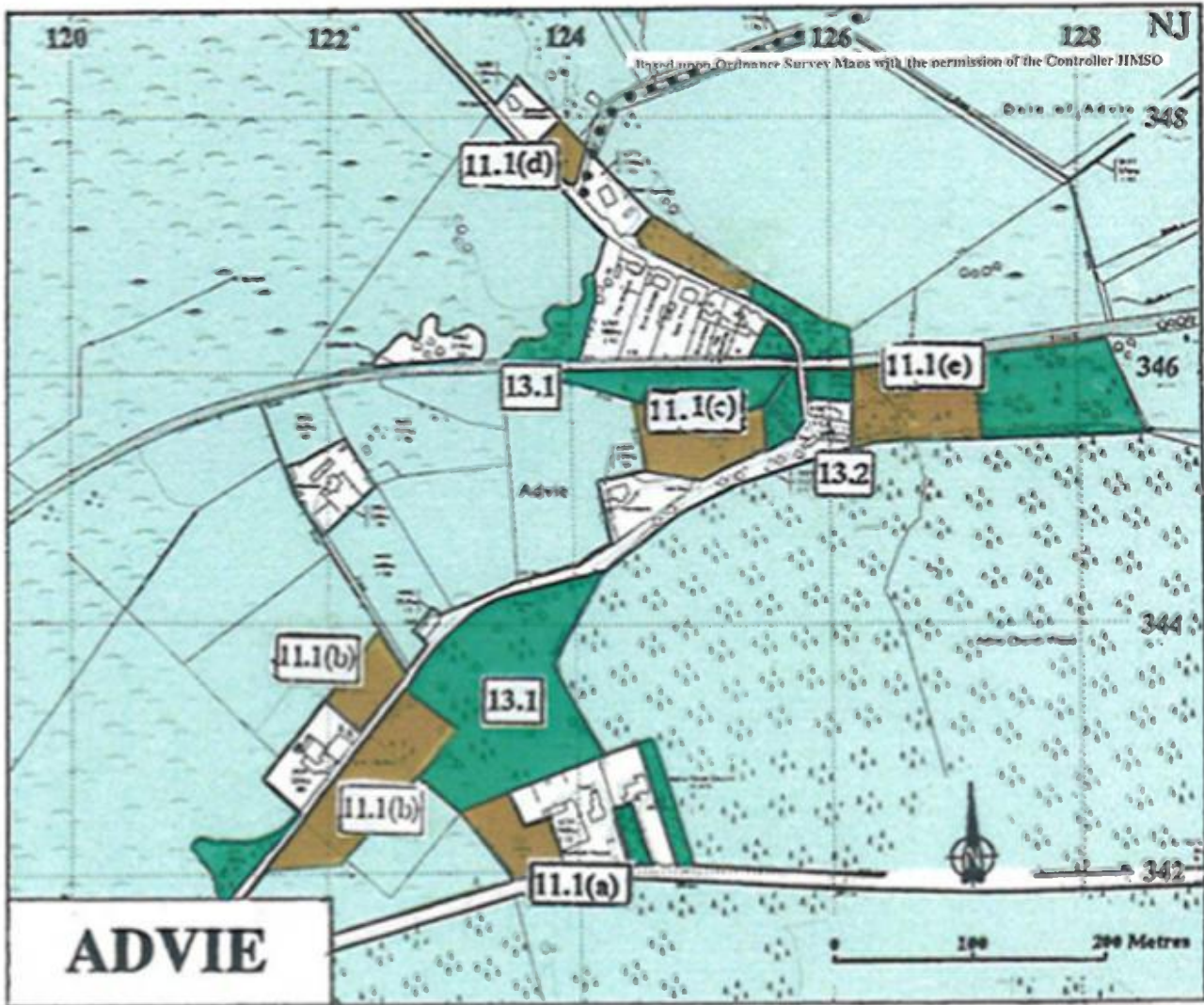
Provisions of Local Plan Map(s) as continued in force

The provisions of the Proposals Map (including any inset contained in or accompanying it and the policies and proposals shown on such inset) and related notations, referencing and explanatory text, only to the extent to which those provisions show, illustrate or explain any provision of the local plan which is continued in force by the Parliamentary Order* and as detailed in the Retention Schedule.

**(The Town and Country Planning (Continuation in force of Local Plans (Highland) (Scotland) Order 2012)*

SEE SHEET 2 OVER





HOUSING

- New Development
- Long Term
- Infill

EMPLOYMENT

- Business / Industry
- Commerce / Tourism

COMMUNITY

- Recreation / Open Space
- Public Buildings
- Footpaths

SERVICES

- Roads
- Car Park
- Pedestrian / Traffic Calming Zone
- Sewage Treatment Safeguarding

ENVIRONMENT

- Listed Buildings
- Amenity Woodland
- Forestry / Restraint
- Conservation Area
- Other Nature Conservation Sites

Provisions of Local Plan Map(s) as continued in force

The provisions of the Proposals Map (including any inset contained in or accompanying it and the policies and proposals shown on such inset) and related notations, referencing and explanatory text, only to the extent to which those provisions show, illustrate or explain any provision of the local plan which is continued in force by the Parliamentary Order* and as detailed in the Retention Schedule.

*The Town and Country Planning (Continuation in force of Local Plans (Highland) (Scotland) Order 2012)