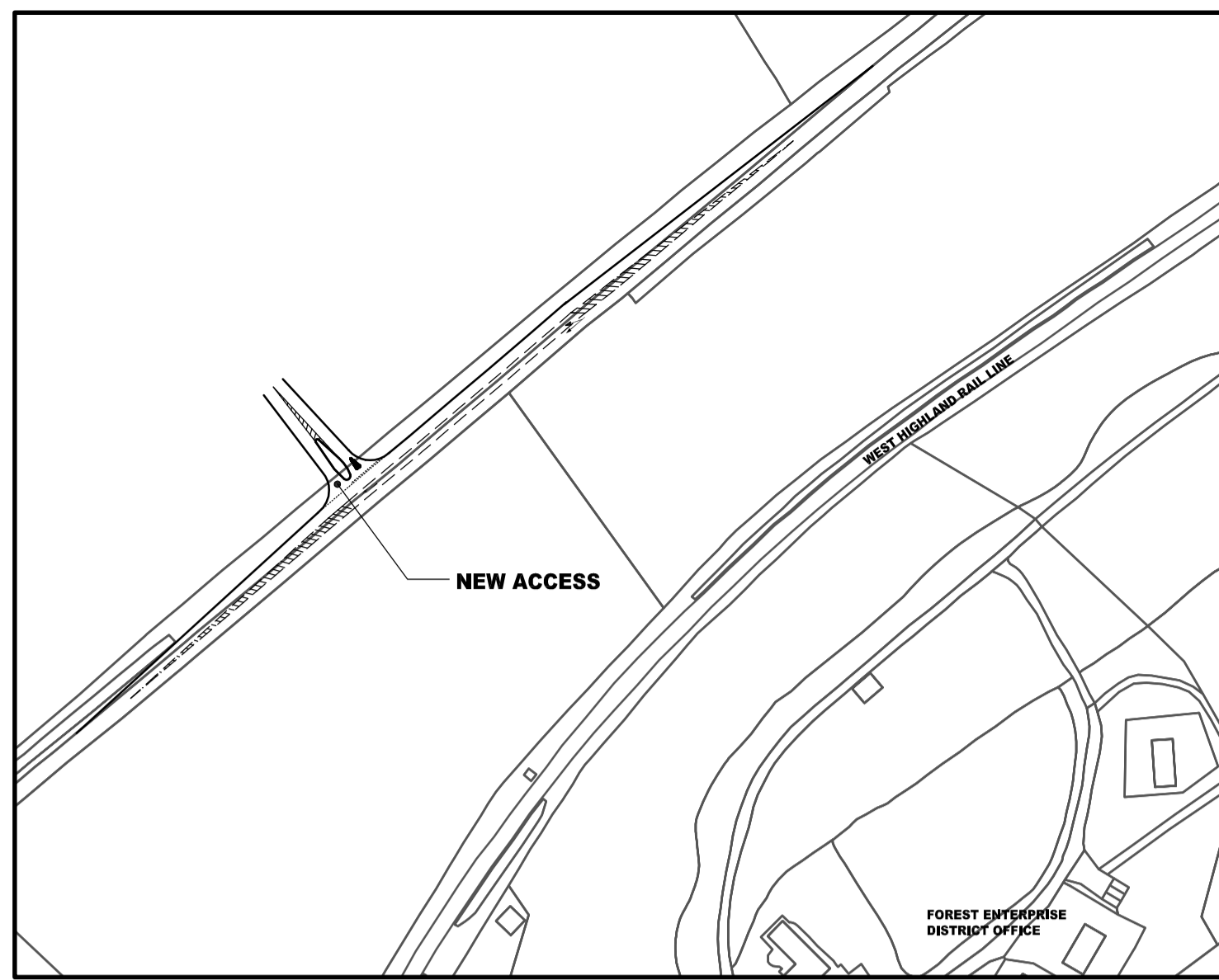
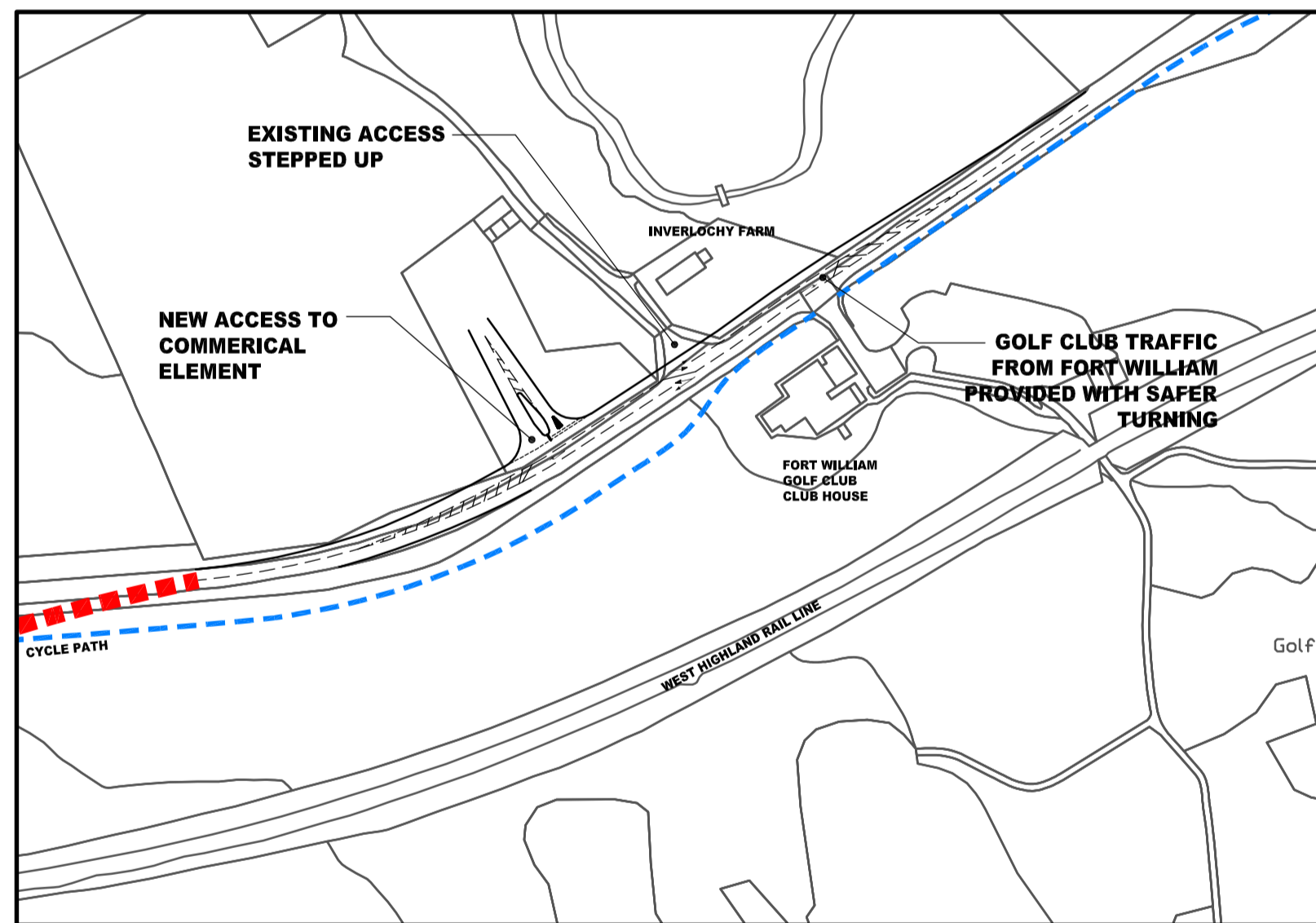


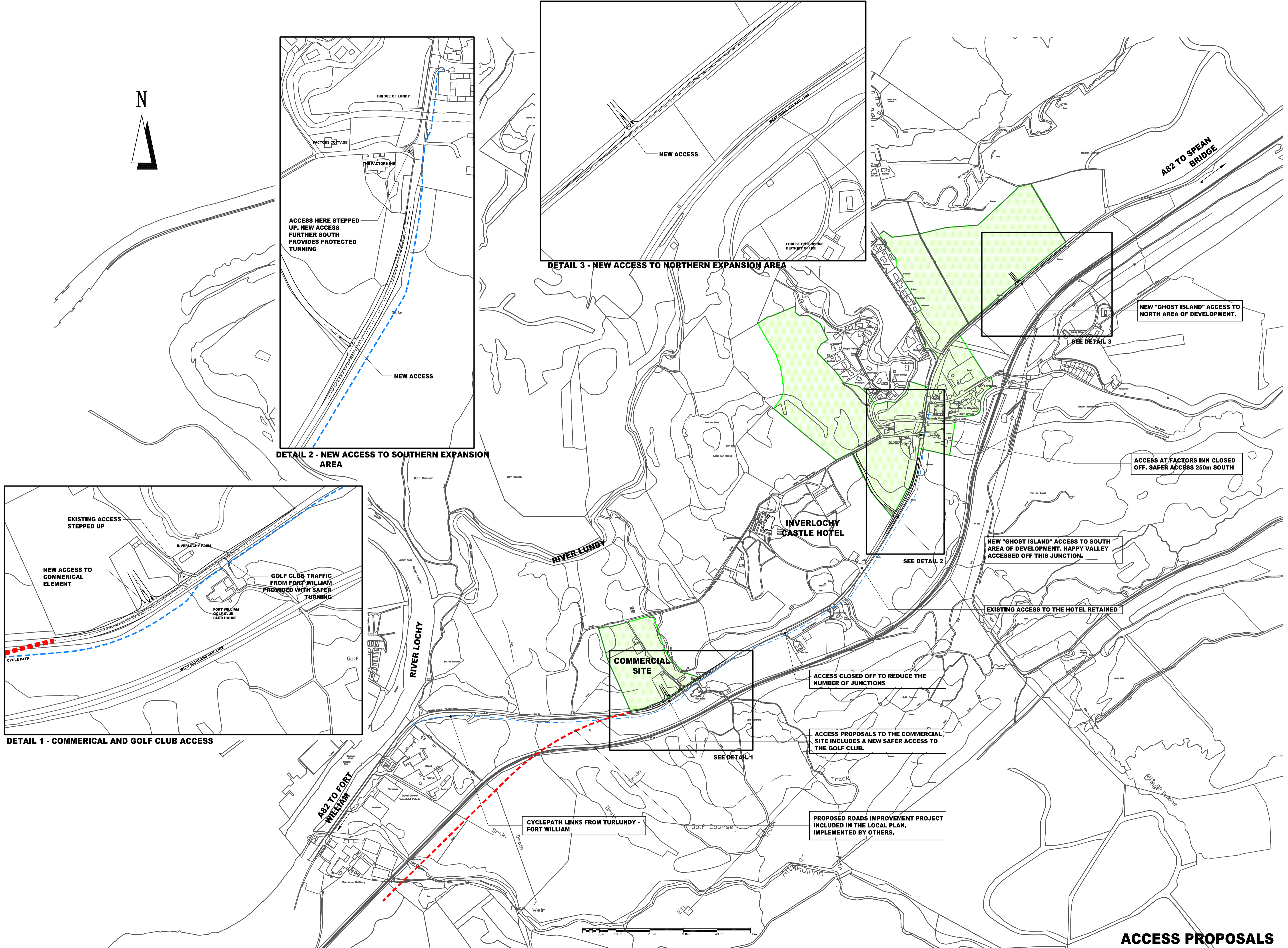
**DETAIL 2 - NEW ACCESS TO SOUTHERN EXPANSION AREA**



**DETAIL 3 - NEW ACCESS TO NORTHERN EXPANSION AREA**



**DETAIL 1 - COMMERCIAL AND GOLF CLUB ACCESS**



NEW "GHOST ISLAND" ACCESS TO NORTH AREA OF DEVELOPMENT.  
SEE DETAIL 3

ACCESS AT FACTORS INN CLOSED OFF. SAFER ACCESS 250m SOUTH

NEW "GHOST ISLAND" ACCESS TO SOUTH AREA OF DEVELOPMENT. HAPPY VALLEY ACCESSED OFF THIS JUNCTION.

EXISTING ACCESS TO THE HOTEL RETAINED

ACCESS CLOSED OFF TO REDUCE THE NUMBER OF JUNCTIONS

ACCESS PROPOSALS TO THE COMMERCIAL SITE INCLUDES A NEW SAFER ACCESS TO THE GOLF CLUB.

PROPOSED ROADS IMPROVEMENT PROJECT INCLUDED IN THE LOCAL PLAN. IMPLEMENTED BY OTHERS.

CYCLEPATH LINKS FROM TURLUNDY - FORT WILLIAM

**ACCESS PROPOSALS**