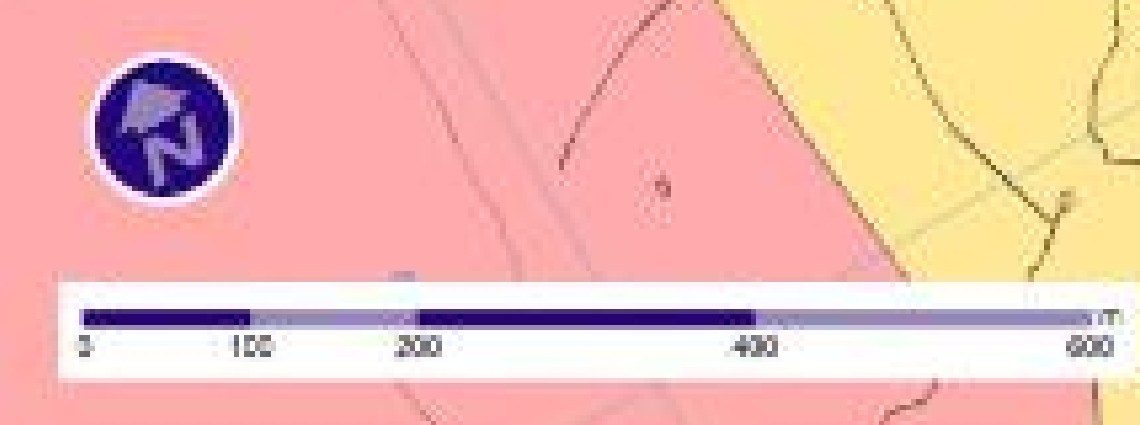
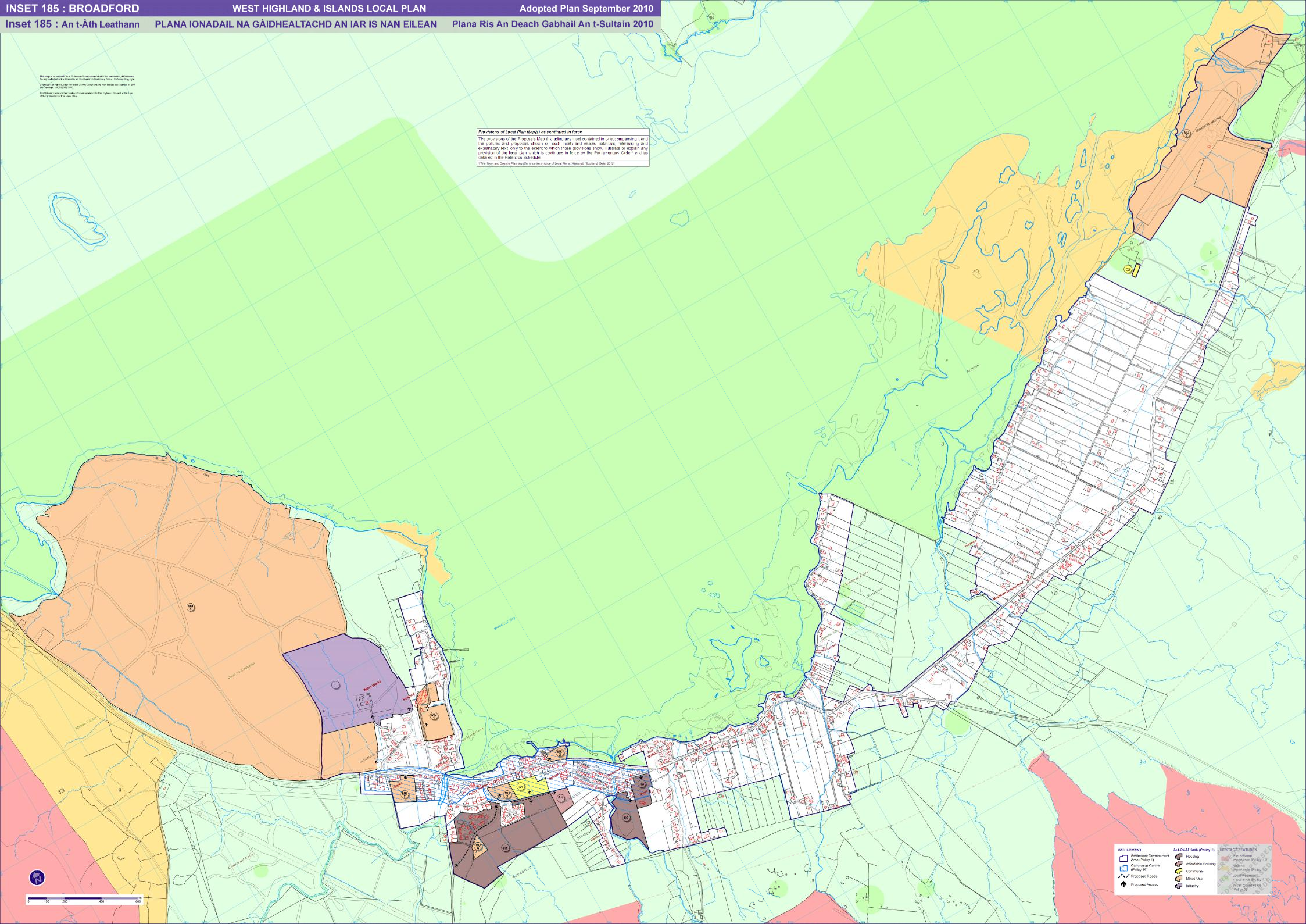


This map is reproduced from Ordnance Survey material with the permission of Ordnance Survey on behalf of the Controller of Her Majesty's Stationery Office. © Crown Copyright. Topographical information copyright Crown Copyright and may be reproduced or used in any form without the permission of Ordnance Survey. Licence No. 100025800 2009. All OS base maps and the map up-to-date website is the copyright of the Ordnance Survey.

Provisions of Local Plan Maps as continued in force
The provisions of the Proposals Map (including any inset contained in or accompanying it and the policies and proposals shown on such inset) and related notations, referencing and explanatory text, only to the extent to which those provisions show, illustrate or explain any provision of the local plan which is continued in force by the Parliamentary Order, and as detailed in the Retention Schedule.
1 The Town and Country Planning (Continuation in Force of Local Plans) (Scotland) Order 2010.



SETTLEMENT	ALLOCATIONS (Policy 2)	HERITAGE FEATURES
<ul style="list-style-type: none"> Settlement Development Area (Policy 1) Commerce Centre (Policy 16) Proposed Roads Proposed Access 	<ul style="list-style-type: none"> Housing Affordable Housing Community Mixed Use Industry 	<ul style="list-style-type: none"> International importance (Policy 4.3) National importance (Policy 4.2) Local importance (Policy 4.1) Wider Cultural Assets (Policy 3)