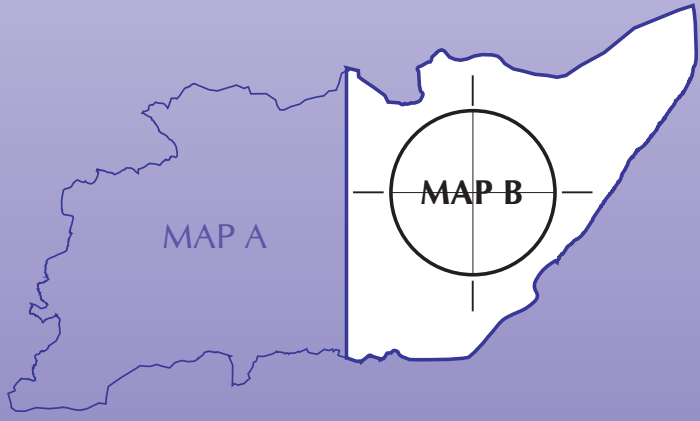


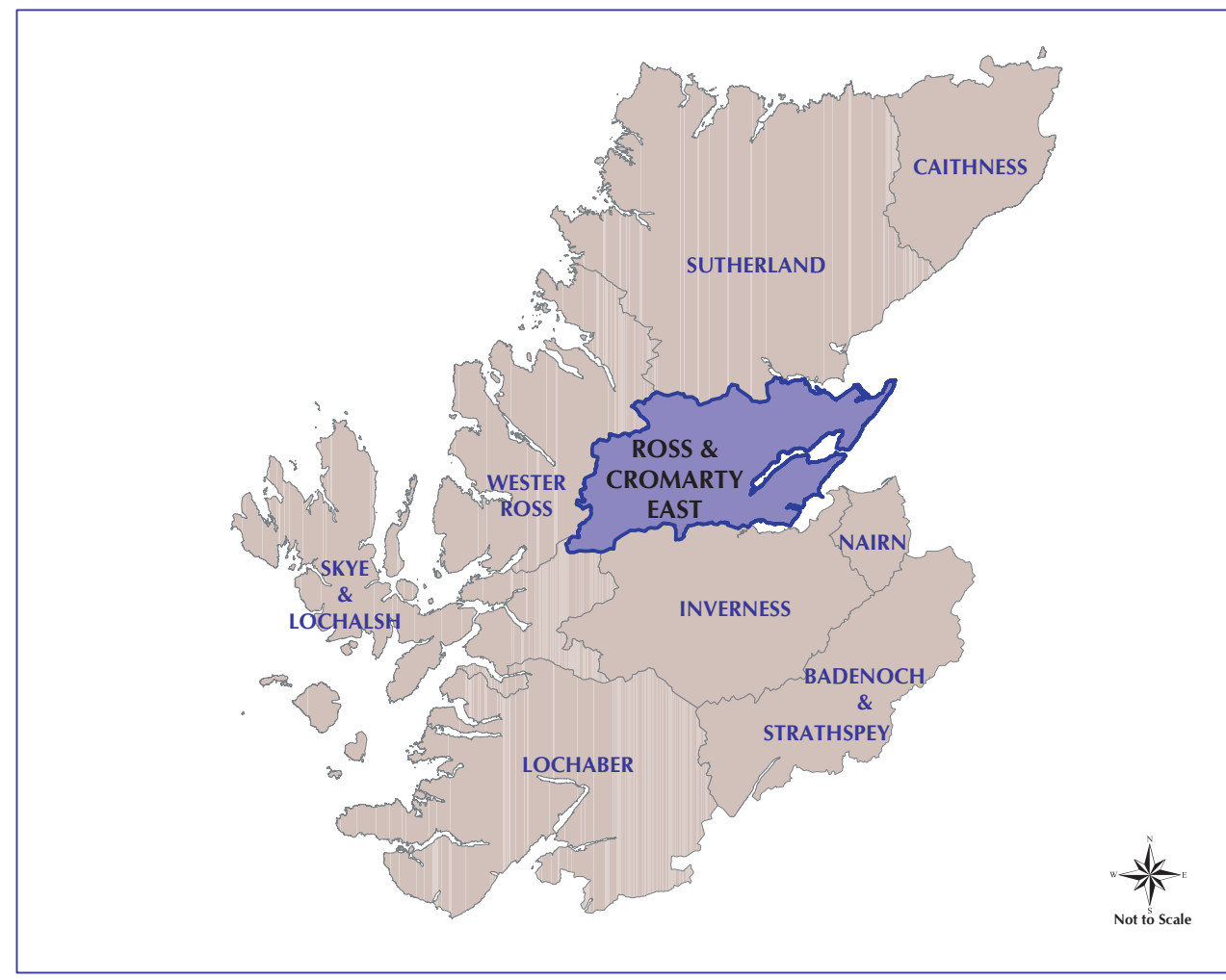
NOTE: Not all Policy Definitions are identified on the Proposals and Analysis Mapping. Background Policy Features are under constant review and therefore the Analysis Map is a point in time document, October 2003



ROSS & CROMARTY EAST LOCAL PLAN  
(As Continued in Force) (April 2012)  
**ANALYSIS MAP B**

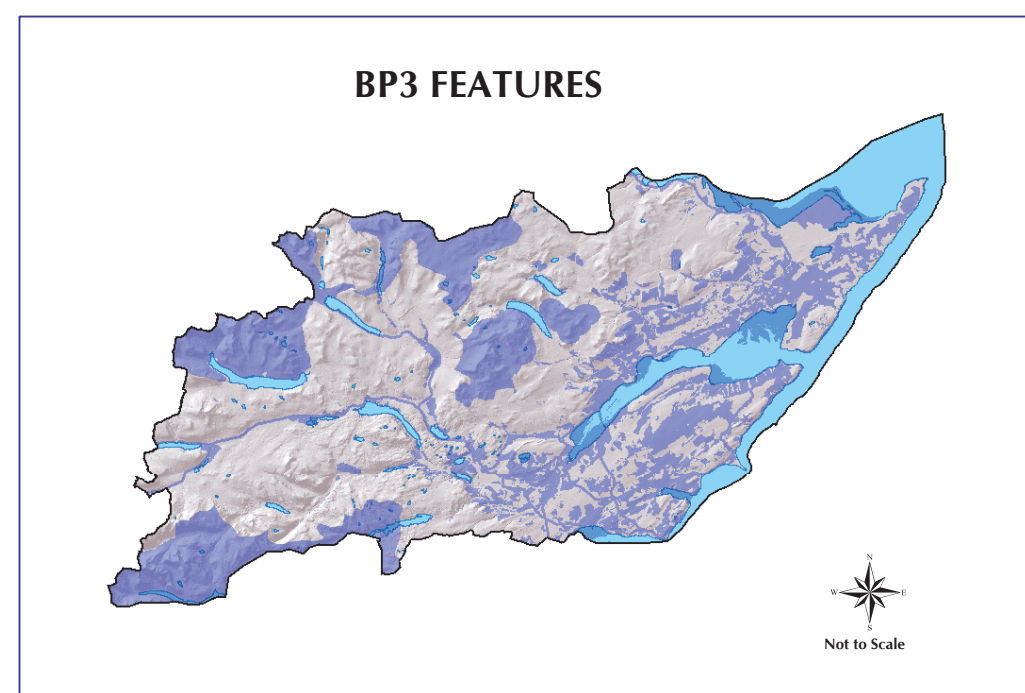
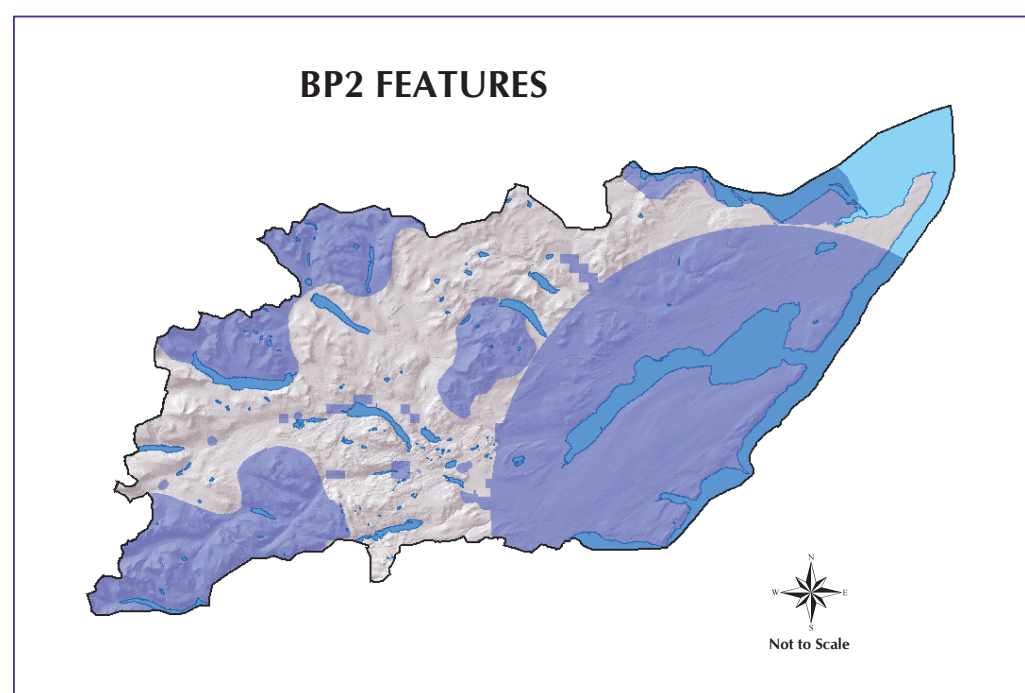
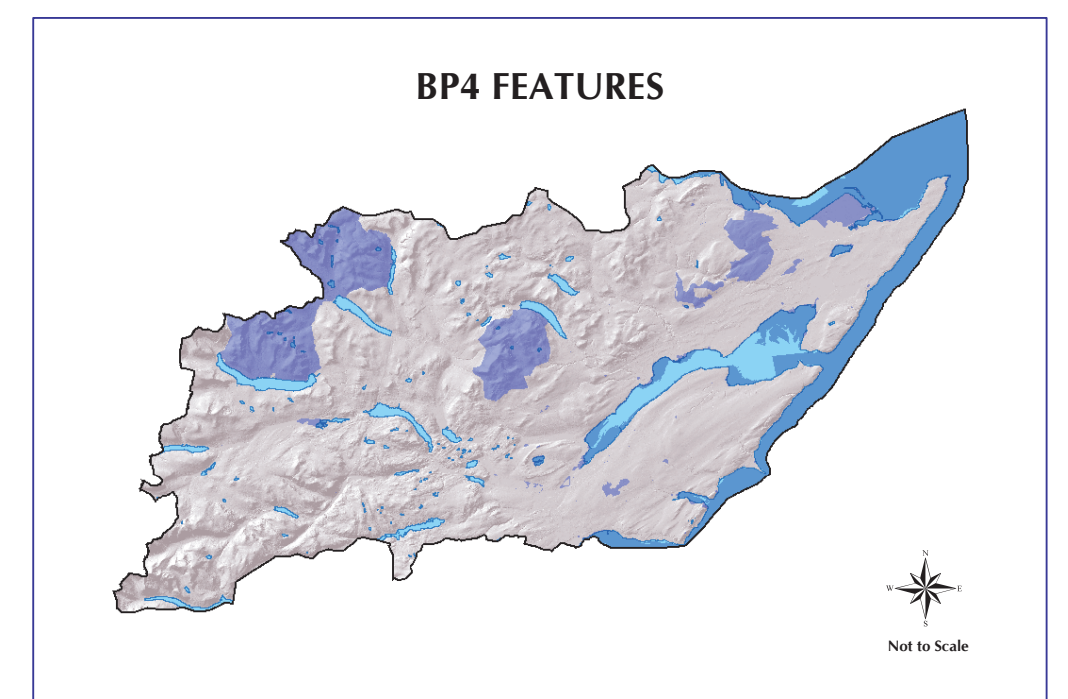
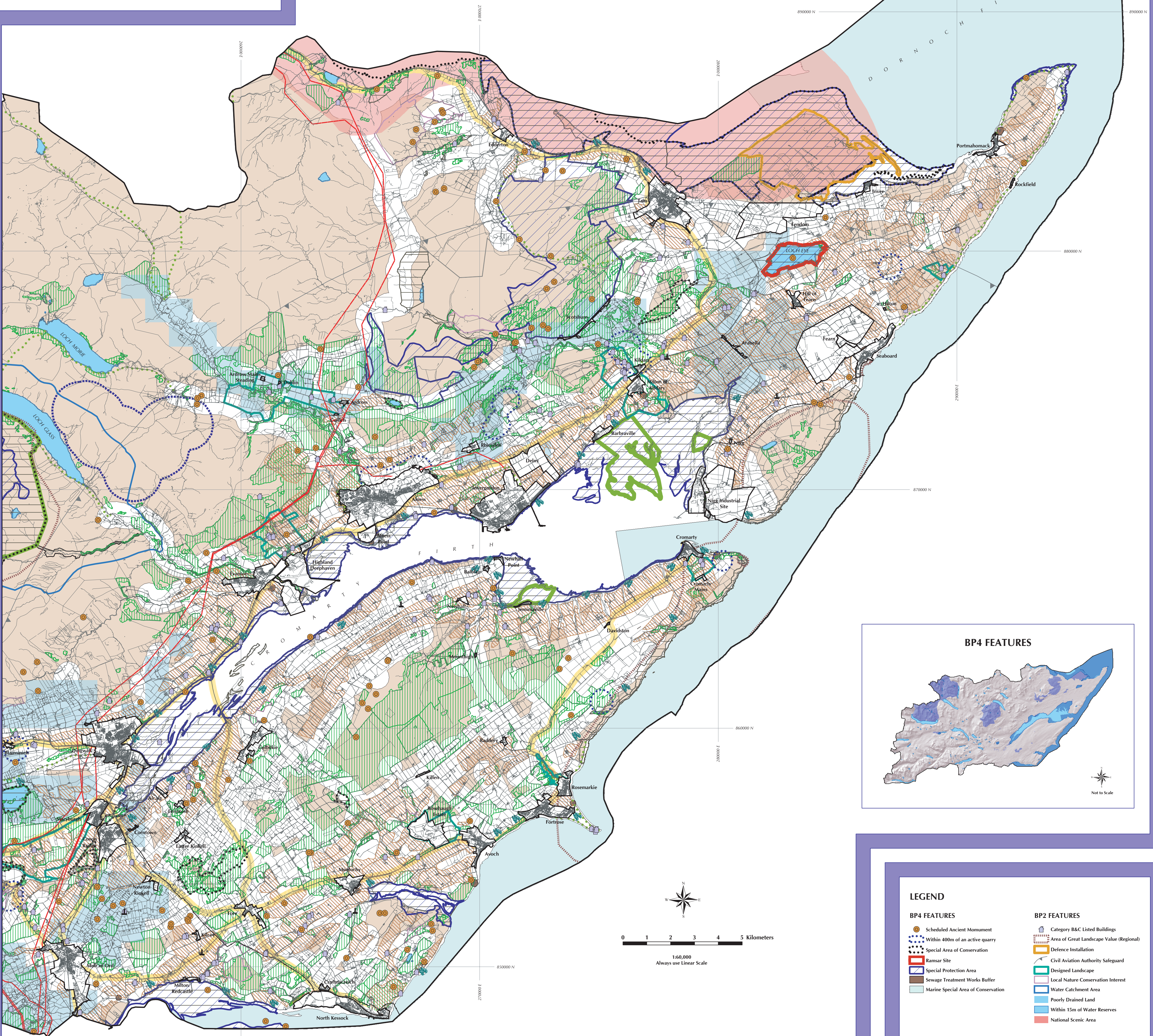


PLANNING & DEVELOPMENT SERVICE



**Provisions of Local Plan Map(s) as continued in force**  
The provisions of the Proposals Map (including any inset contained in or accompanying it and the policies and proposals shown on such inset) and related notations, referencing and explanatory text, only to the extent to which those provisions show, illustrate or explain any provision of the local plan which is continued in force by the Parliamentary Order\* and as detailed in the Retention Schedule.

\*The Town and Country Planning (Continuation in Force of Local Plans (Highland) (Scotland) Order 2012)



**LEGEND**

- |   |   |
|---|---|
| <p><b>BP4 FEATURES</b></p> <ul style="list-style-type: none"> <li>● Scheduled Ancient Monument</li> <li>○ Within 400m of an active quarry</li> <li>● Special Area of Conservation</li> <li>■ Ramsar Site</li> <li>■ Special Protection Area</li> <li>■ Sewage Treatment Works Buffer</li> <li>■ Marine Special Area of Conservation</li> </ul>  | <p><b>BP2 FEATURES</b></p> <ul style="list-style-type: none"> <li>■ Category B&amp;C Listed Buildings</li> <li>■ Area of Great Landscape Value (Regional)</li> <li>■ Defence Installation</li> <li>■ Civil Aviation Authority Safeguard</li> <li>■ Designed Landscape</li> <li>■ Local Nature Conservation Interest</li> <li>■ Water Catchment Area</li> <li>■ Poorly Drained Land</li> <li>■ Within 15m of Water Reserves</li> <li>■ National Scenic Area</li> </ul> |
| <p><b>BP3 FEATURES</b></p> <ul style="list-style-type: none"> <li>■ War Memorial</li> <li>■ Category A Listed Buildings</li> <li>● Rights of Way</li> <li>— Railway Line</li> <li>— Pipelines</li> <li>— Overhead Lines</li> <li>■ Within 1000m of Wind Generators</li> <li>■ Views over open water/coast</li> <li>■ Area of Great Landscape Value</li> <li>■ SSSI</li> <li>■ National Nature Reserve</li> <li>■ Prime Agricultural Land</li> <li>■ Semi-Natural &amp; Ancient Woodland</li> <li>■ Tree Preservation Order</li> <li>■ Within 150m of Trunk/Major Road corridors</li> <li>■ Remote Area</li> </ul> | <p><b>OTHER</b></p> <ul style="list-style-type: none"> <li>■ Local Plan Boundary</li> <li>■ Inset Boundary</li> </ul>   |



Wood fibre from sustainable forests



Fully recyclable and biodegradable

Planning & Development Service  
Glenurquhart Road  
Inverness  
IV3 5NX  
Tel: (01463) 702250  
fax: (01463) 702298