

Building in the Highlands.....



Robert Ferrier
12 december 2012



ADAPTABLE



Leault children's residential unit, Abriachan

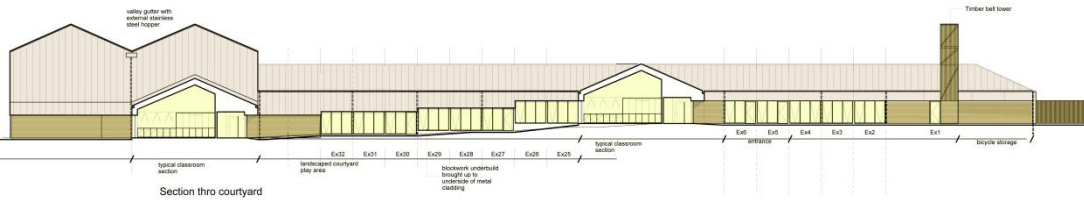
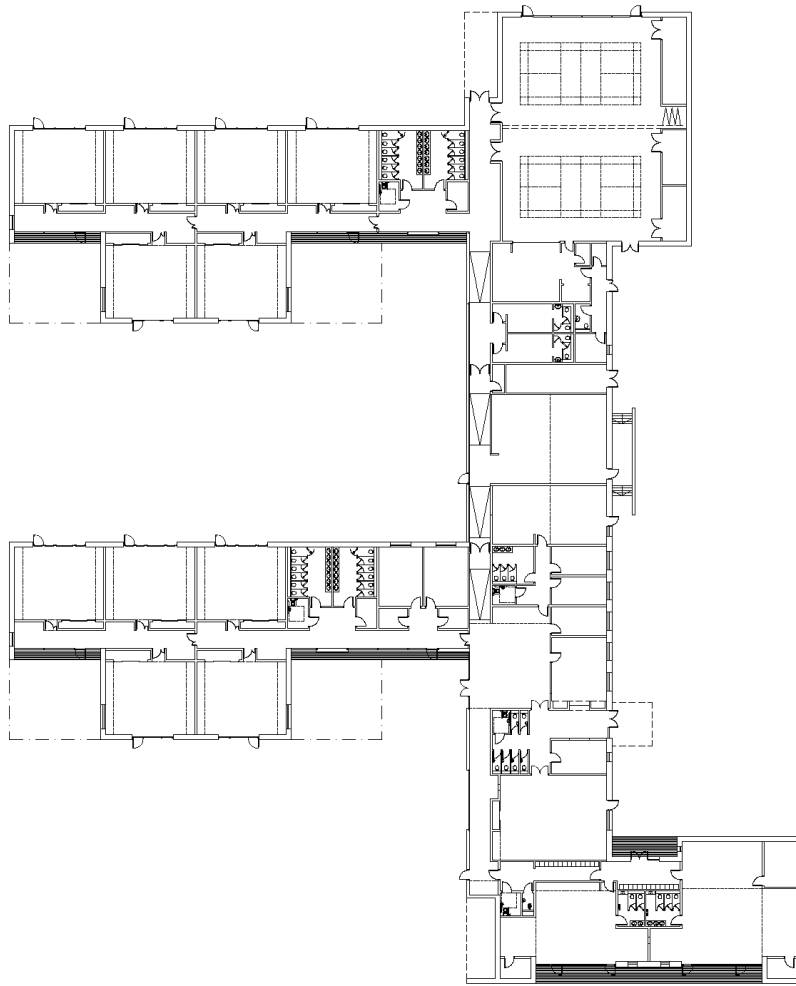


Highland Housing Fair



Change of scale...





Milton of Leys PS

'I must say, it's good to see a building with such a strong architectural concept seen through with real clarity. Well done.'

Sam Cassels

Design Advisor (Schools) | Architecture + Design Scotland



Milton of Leys PS



- Primary school with 10 class bases with provision to build 4 more.
- Contemporary design ethos developed from pragmatic Highland rural vernacular traditions.
- Simple, cost effective construction with good quality finishes and uncluttered detailing.
- Flexible design to allow delivery of ScotGov's curriculum for excellence, or indeed an excellent curriculum. Including internal and external learning opportunities.
- Sustainably designed to BREEAM excellent, with emphasis on passive solar gain and high thermal insulation.
- Emphasis on natural daylight and ventilation.
- Community facilities integrated into the design, including games hall, MUGA, and community room.
- Facilities determined following stakeholder engagement.

“It’s an unreal experience and I feel very, very privileged to work in such an amazing school,” says P4/5 teacher Lindsay Vass. “It’s a dream school - everything that’s to do with teaching and education - this school caters for it all,” says Mrs Vass, who joins the staff from Crown Primary and has been teaching for four years.’
From; News | Published in TESS on 2 September, 2011 | By: Jean McLeish



Milton of Leys PS



Milton of Leys PS



Milton of Leys PS

Nitty gritty

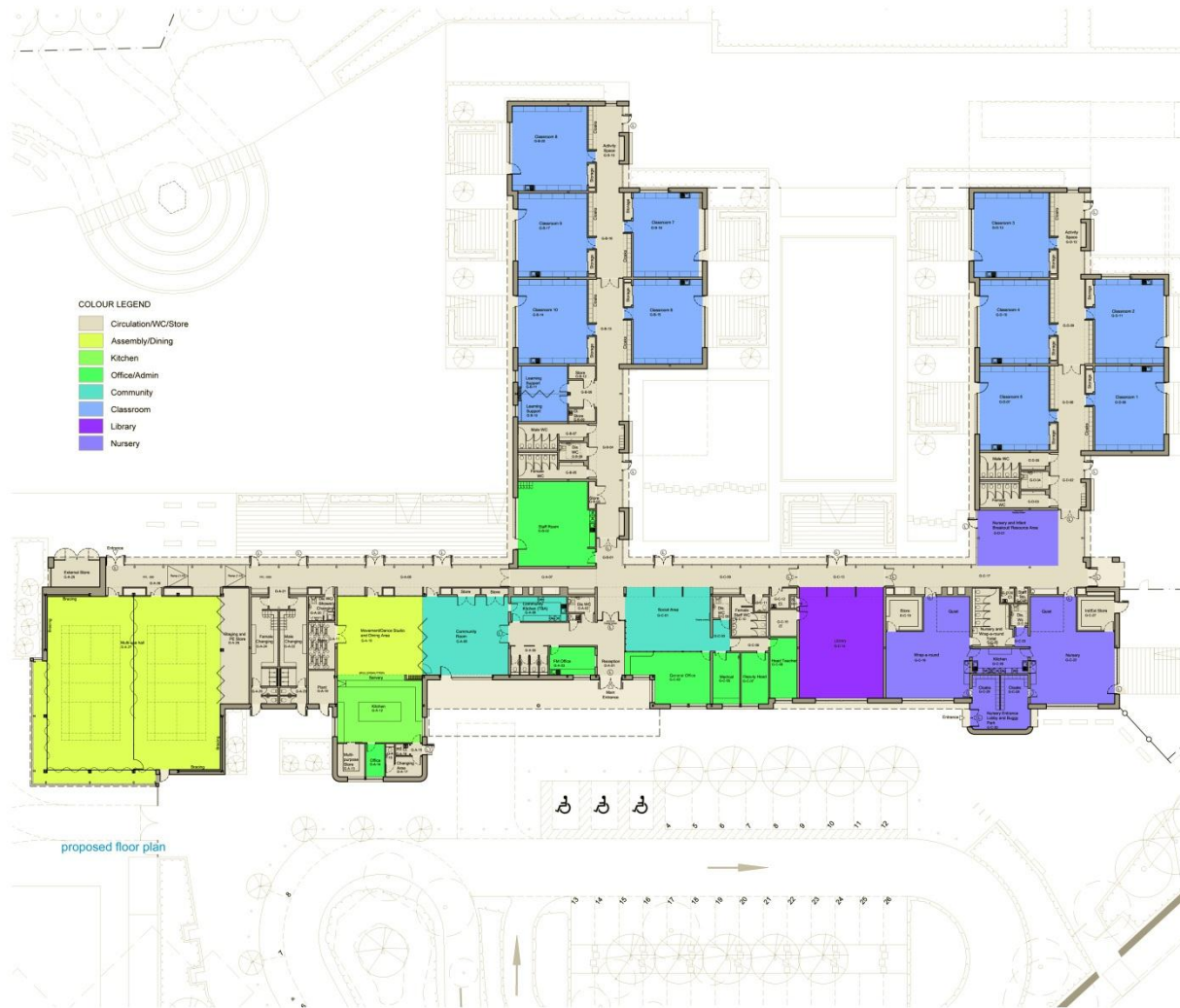
Contract

- Tendered at stage D+
- Design and build contract
- HC design team supported D+B team
- Positive relationships with contractors

Cost

- Overall cost
- Cost/m² less abnormals
- Benchmarking against Scottish experience

Milton of Leys PS



COLOUR LEGEND

Light Green	Circulation/WC/Store
Yellow	Assembly/Dining
Light Green	Kitchen
Light Green	Office/Admin
Light Blue	Community
Blue	Classroom
Purple	Library
Light Blue	Nursery

proposed floor plan

precedents



scale, impact and appearance

the school is a single storey building with the finished floor level adjusted accordingly to respond to the **topography** of the site. in order to reduce the scale of the building and its **visual impact** a low ridge height has been designed.


the building has been designed to respond sensitively to the surroundings but also to create its own **identity** and **standing** in the community. the style and regional **distinctiveness** of the building has been informed by its rural setting by reflecting the traditional building types commonly found in the area. the specification has reinforced this with the use of a **simple palette of materials**.

the scale of the building elements have been articulated to **define function** without being overwhelming for the pupils. **breakout spaces** have been provided both internally and externally to create more intimate and informal spaces for pupils to relax.

the roof overhangs the glazed corridors to prevent these areas from overheating and also to provide areas for children to **shelter** in the event of adverse weather.

outdoor spaces will be landscaped with a varied range of **surface features** and **outdoor furniture** and the design of the building provides areas of special architectural interest such as the projecting timber boxes and seating which will aim to **stimulate** and promote **social interaction**.

approach and aesthetics

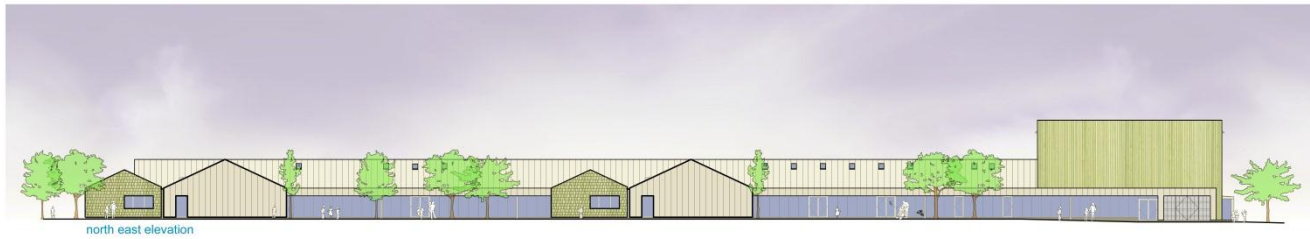
 **The Highland Council**
Comhairle na Gàidhealtachd

education, culture and sport
conon bridge and maryburgh
primary school

Ben Wyvis primary school



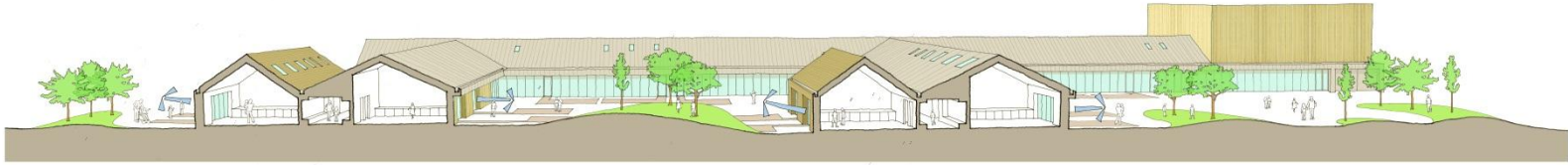
south west elevation




north east elevation



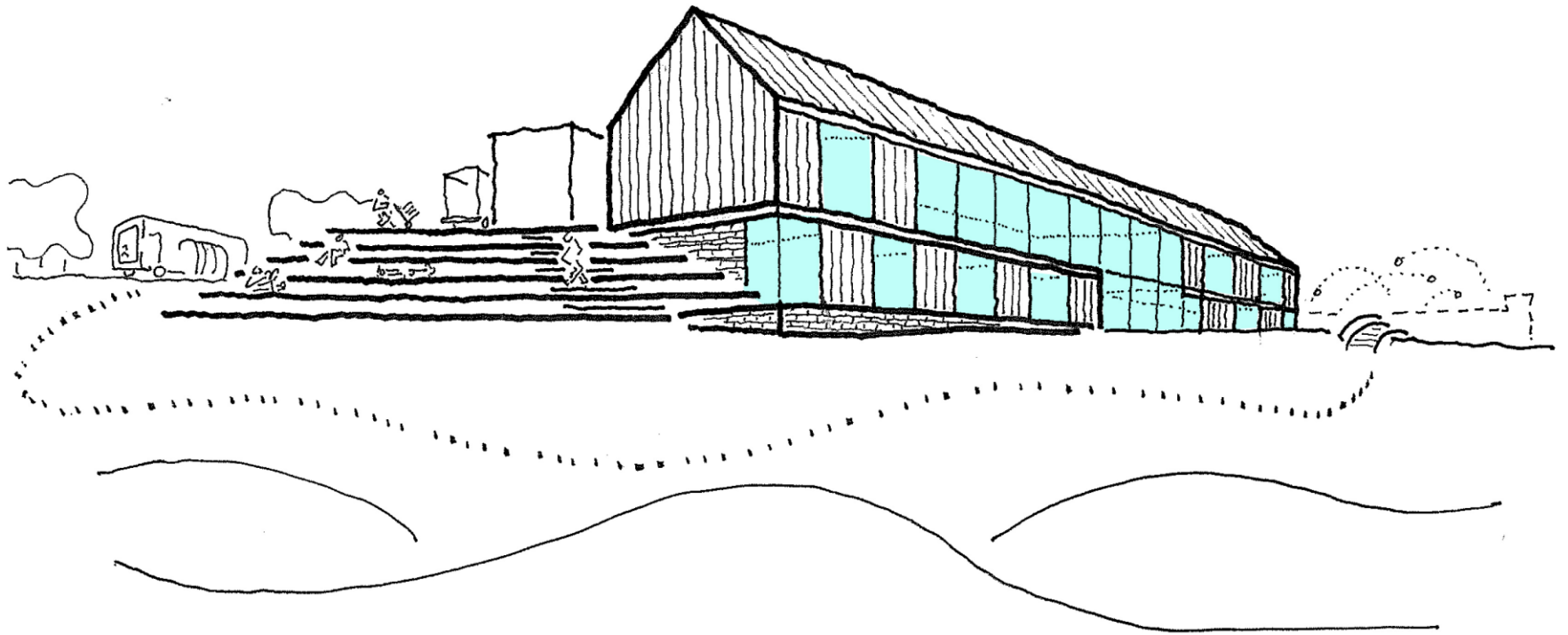
precedents



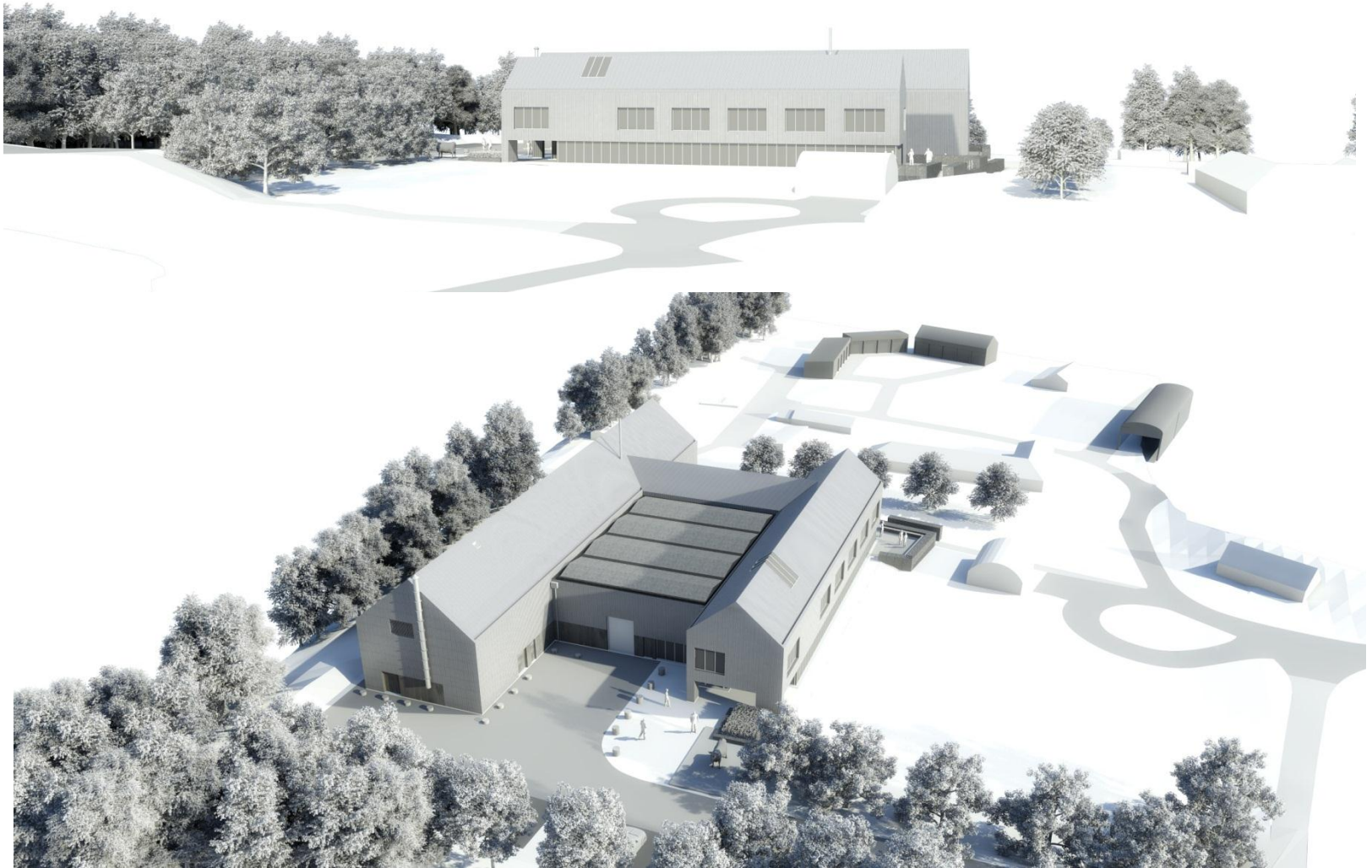
 The Highland Council
Comhairle na Gàidhealtachd
education, culture and sport
conon bridge and maryburgh
primary school

approach and aesthetics

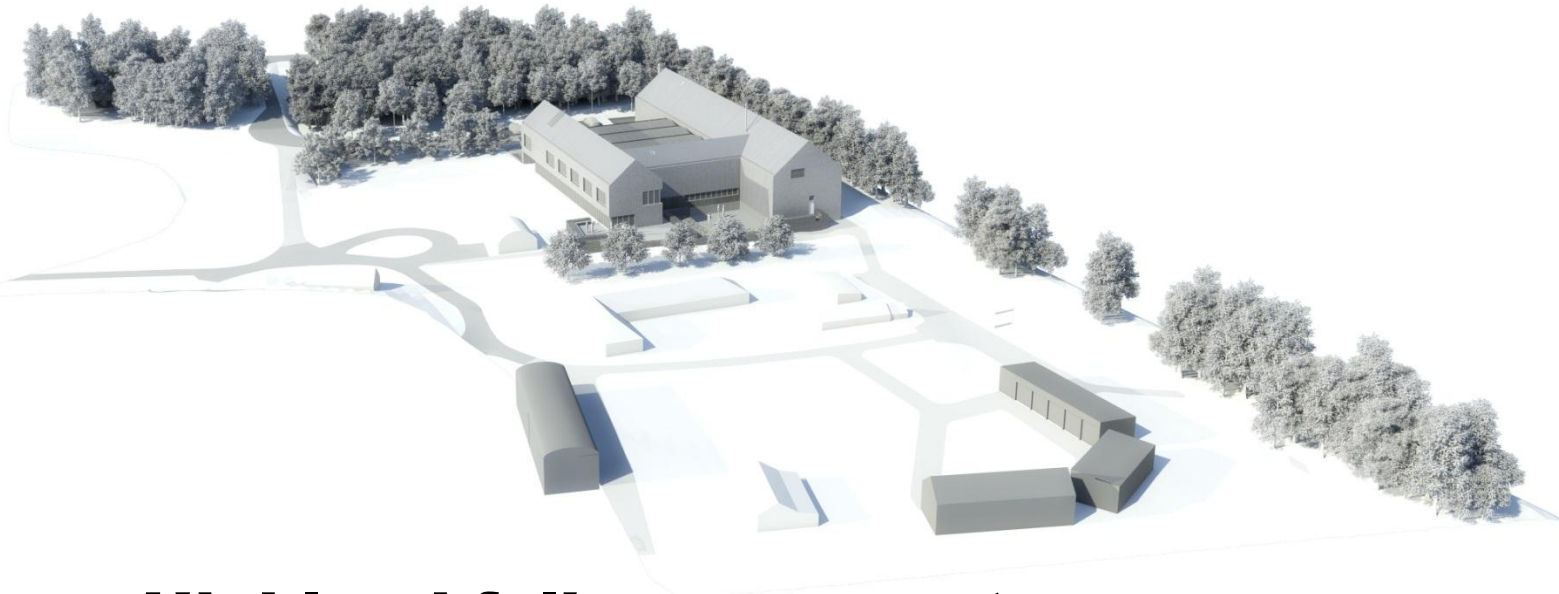
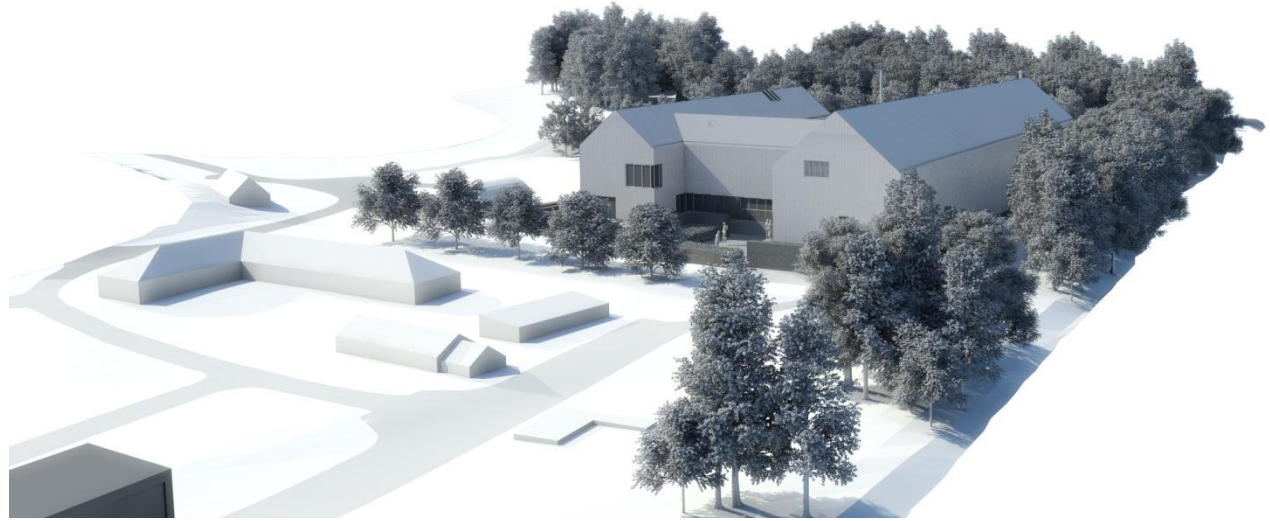
Ben Wyvis primary school



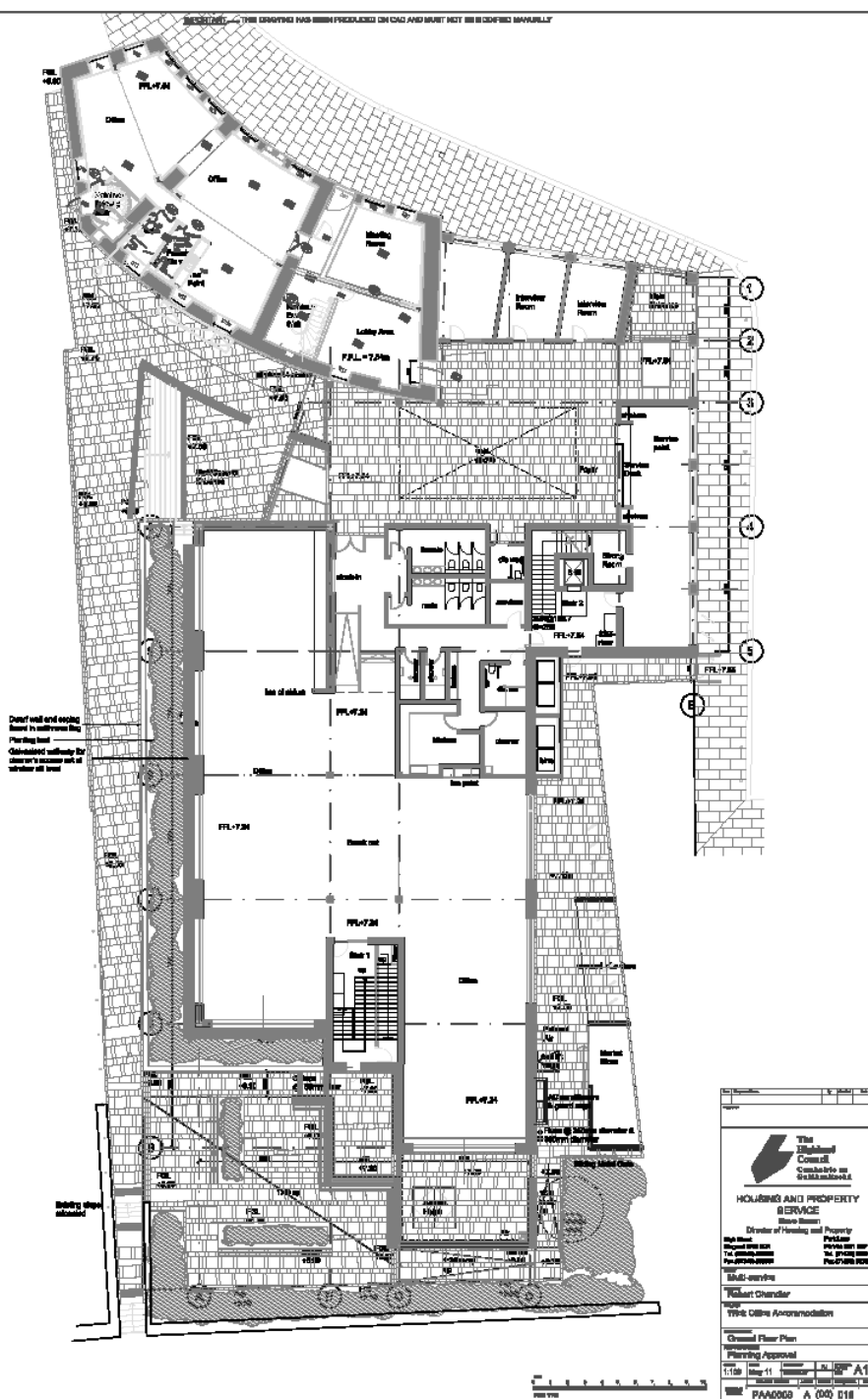
Lundavra Road primary school



Highland folk museum store

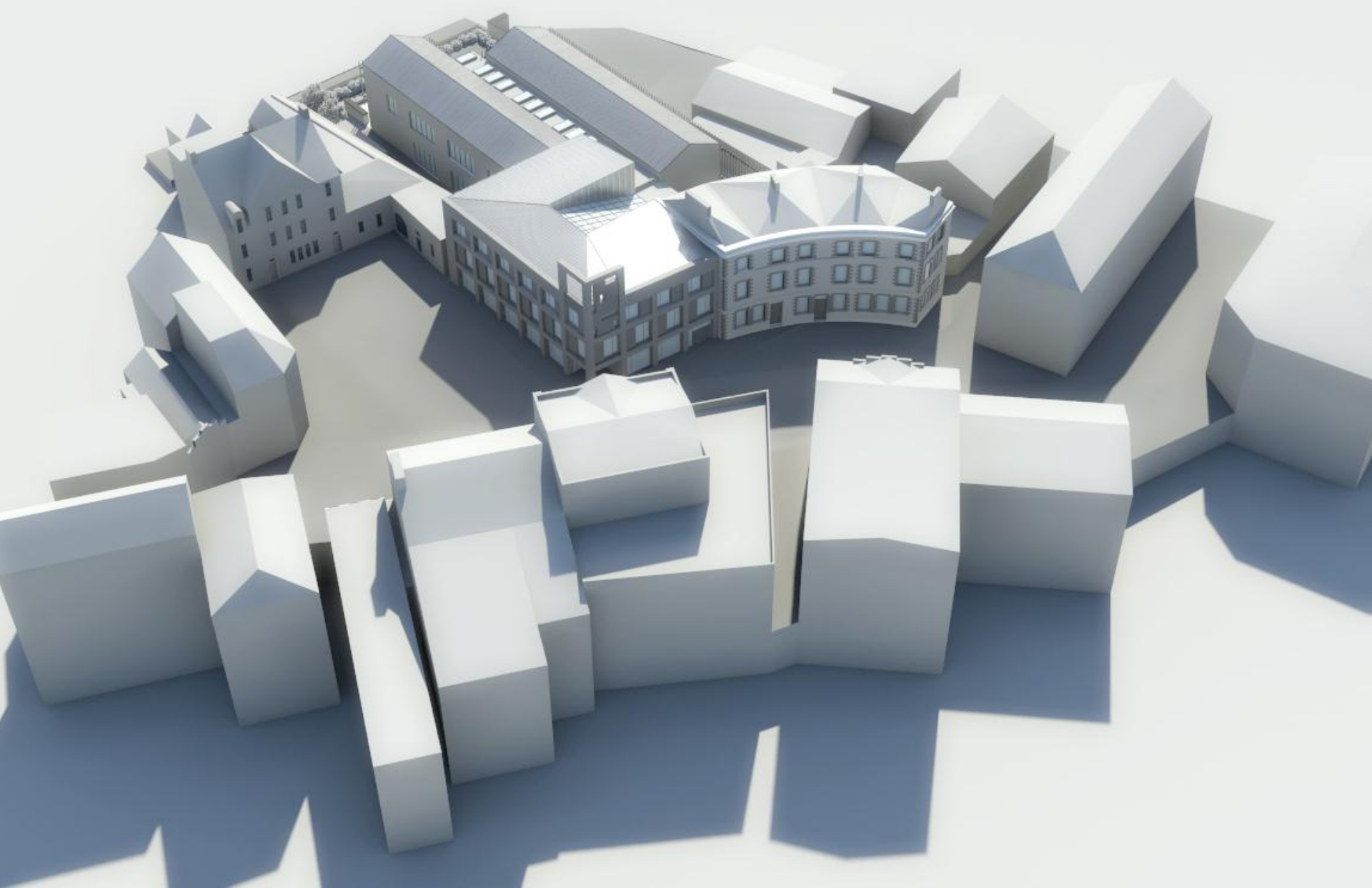


Highland folk museum store

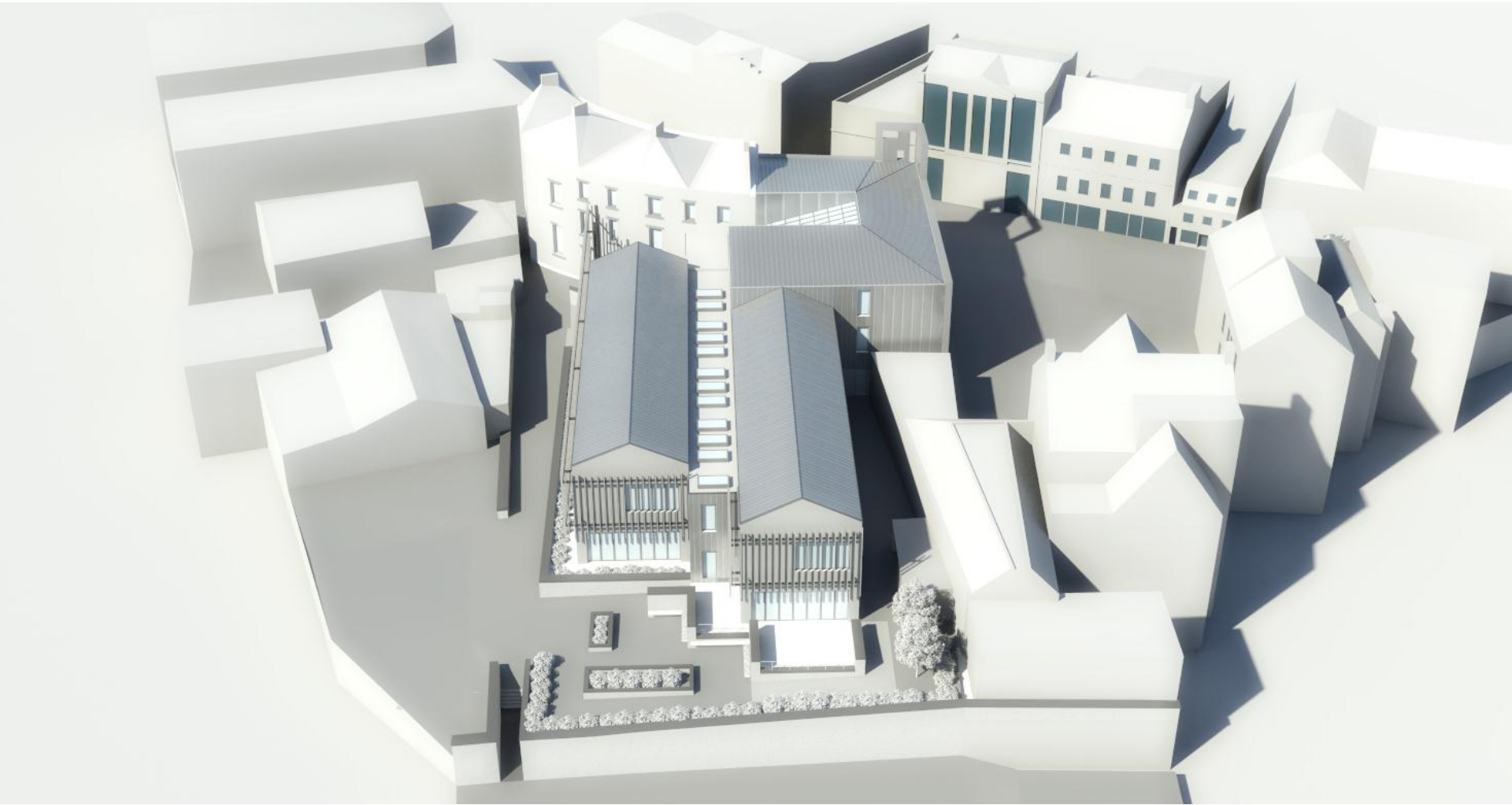


- Rationalisation of existing offices in Wick to one location
- Provision of office accommodation for the 21st century
- Provision of more efficient and effective service delivery in line with corporate improvement initiatives
- Provide opportunity for co-location with other public bodies
- Improve the environment for engaging with our clients
- Assist in the regeneration of Wick town centre
- 2835m2 gross
- £7.6m excluding fees and statutory charges
- Awaiting Planning Approval and Listed Building consent.
- Site works to commence summer 2012

Wick Office



Wick Office



Wick Office

Thank you