

Appendix 1 – Relevant Baseline Information and Maps

The information and maps in this section represent baseline data at a local level to the project area and expands on the information contained in the Relevant aspects of the current state of the environment. Date of data noted where known, otherwise taken as July 2011.

Note: Where information is not available at a local level it is given at a highland wide level.

While some of the information below may not be directly relevant it helped to scope the environmental issues which may be relevant to this project.

Maps Contained in this Section are:

- Core Path Network
- Flood Risk
- Forestry features
- Cultural Heritage
- City Boundary
- Designated sites
- Development plan allocations
- Historic environment record
- Open Space
- Landscape Character
- Water Quality

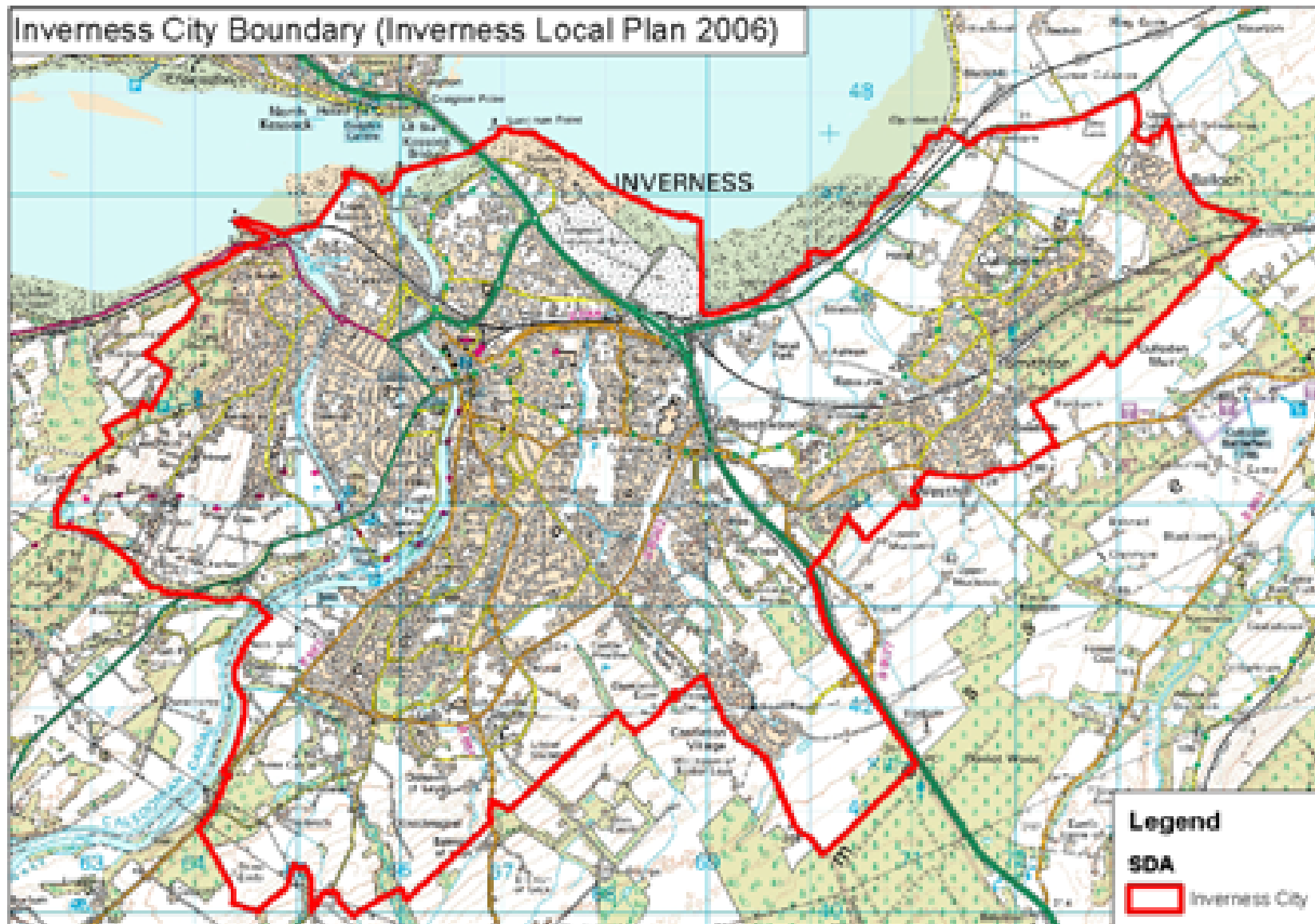
The baseline data has been derived from a number of sources and refined from that used in other recent SEA work. We seek comment from the consultation authorities on its scope.

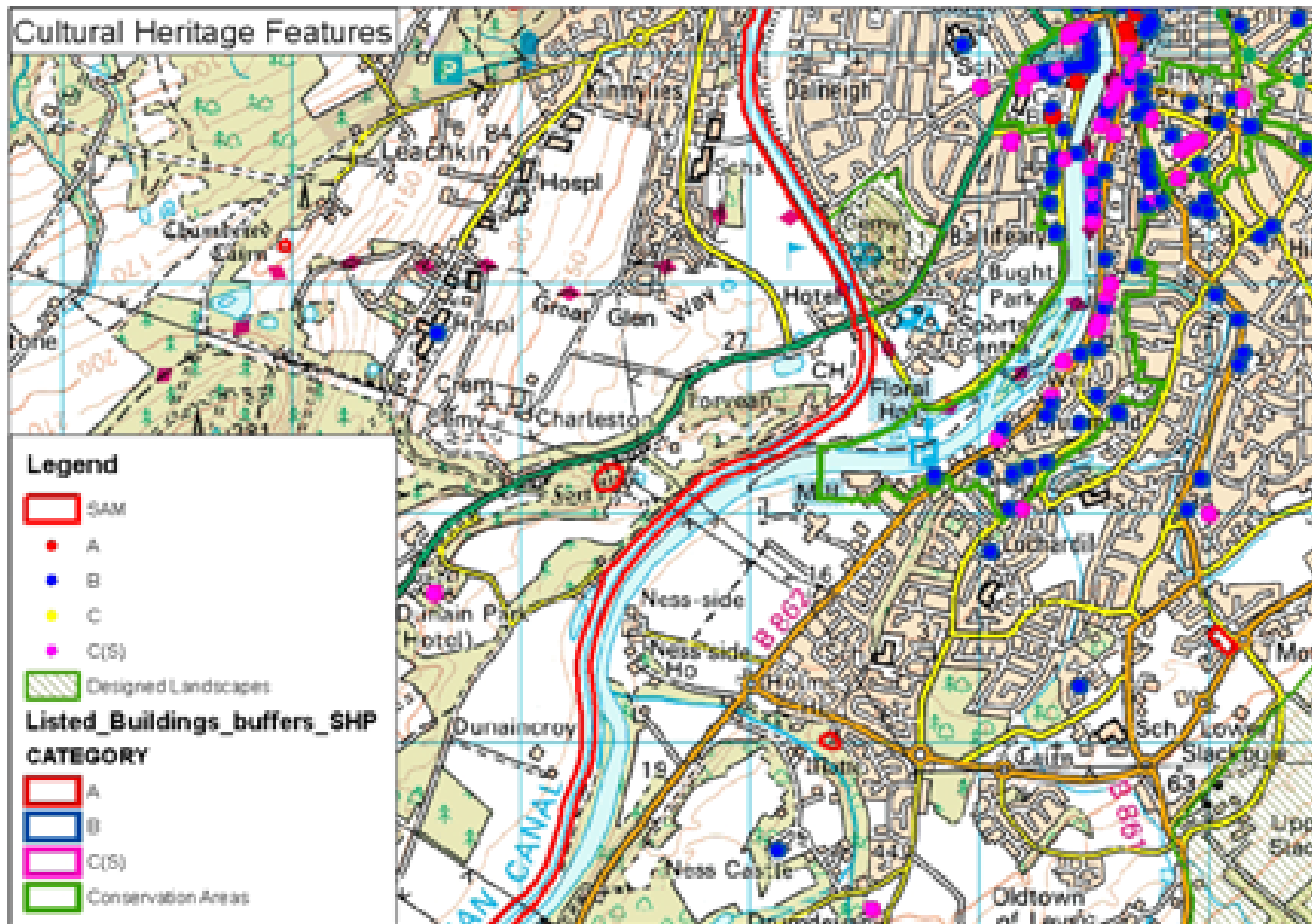
SEA Topic	Information	Information Source
Biodiversity, Flora and Fauna		
Designated Sites	There are currently 1 RAMSAR sites, 1SAC's, 1 SPA's, 1 SSSI's, 0 NNR's, 1 LNR, within the vicinity of the project.	SNH datasets
Habitats and Species	The project area includes 7 types of habitat that are listed as priority habitats in either the uk or local biodiversity action plans. There are 20 species which are known to be present in the project area and 8 which may be present.	Highland Biodiversity Action Plan www.highlandbiodiversity.com Habitat and Birds Directive – Annex 1 http://www.rspb.org.uk/images/sensitivitymapreport_tcm9-157990.pdf http://www.rspb.org.uk/images/sensitivitymap_tcm9-157991.pdf
Condition of designated sites	Site condition monitoring database being produced by SNH will provide information on the condition of designated sites, 2000-2005, including recreational pressures..	SNH
Sea resources	Natural Resources of the Seas around Highland.	http://www.highland.gov.uk/yourenvironment/agriculturefisheriesandforestry/fisheriesandaquaculture/
Forest and Woodland	There are woodland resources nearby and within the project area	The Highland Forest and Woodland strategy. http://www.highland.gov.uk/yourenvironment/agriculturefisheriesandforestry/treesandforestry/highland-forest-and-woodland-strategy.htm Forestry Commission Scotland; http://www.forestry.gov.uk/scotland THC Datasets SNH Datasets
Population		
Population	Population of the City of Inverness is 60,890	2009 mid year estimates
Human Health		
	Highland wide in 2006 22 pedestrians and 5 cyclists were killed or serious injured in road accidents. 1994-98 yearly averages are 38 pedestrian and 16 cyclist fatalities.	www.scotland.gov.uk

	82 non-domestic noise complaints received by Highland Council in 2006/7.	www.audit-scotland.gov.uk
	Scottish Crime and Victimization Survey 2006 suggests 56% of respondents thought crime to be a 'big' problem (93% considered a problem overall). Feelings of safety while walking alone after dark is often used as a proxy measure for fear of crime. Overall, just over 3 in 10 respondents (32%) reported that they felt unsafe while walking alone after dark (which was the same as the proportion that reported feeling unsafe in the 2003 survey). Just over one in 10 (12%) reported that they felt 'very unsafe'. No regional data.	www.scotland.gov.uk
	11 health-related walking groups operating in PPS area.	www.stepituphighland.org.uk
	50% of Highland population walked a least on one day in the past week with the main aim been as a mode of transport (Scotland 53%). 64% walked at least one day in the past week just for pleasure or to keep fit (Scotland 46%).	SHS Transport Across Scotland 2005-2006
Soil		
Contaminated Land	Number of sites of Contaminated Land in direct vicinity of project area.	Highland Council Contaminated Land Database.
Agricultural Land	Land use, employment and production information. Crofting in Highland Type of soils	National Farmers Union Scotland; http://www.nfus.org.uk/facts_index.asp Crofters Commission Annual report 2006/07; http://www.crofterscommission.org.uk/documents/croft-englishfinalreport0607.pdf Macaulay Soil Survey of Scotland
Geodiversity	Torvean Landforms SSSI is designated for its Quaternary of Scotland feature.	SNH Dataset
Water		
Water Quality	Water Quality in the River Ness is classed as Good. Water Quality in the Caledonian Canal is classed as Good Ecological Potential.	SEPA data
Flooding	The project area sits within an area of fluvial flooding.	SEPA data
Air		
Air Quality	There are no Air Quality Management Areas in the vicinity of project.	THC Environmental Health and http://www.scottishairquality.co.uk/
Climatic Factors		
Use of	Number of people travelling by car.	Local Transport Strategy

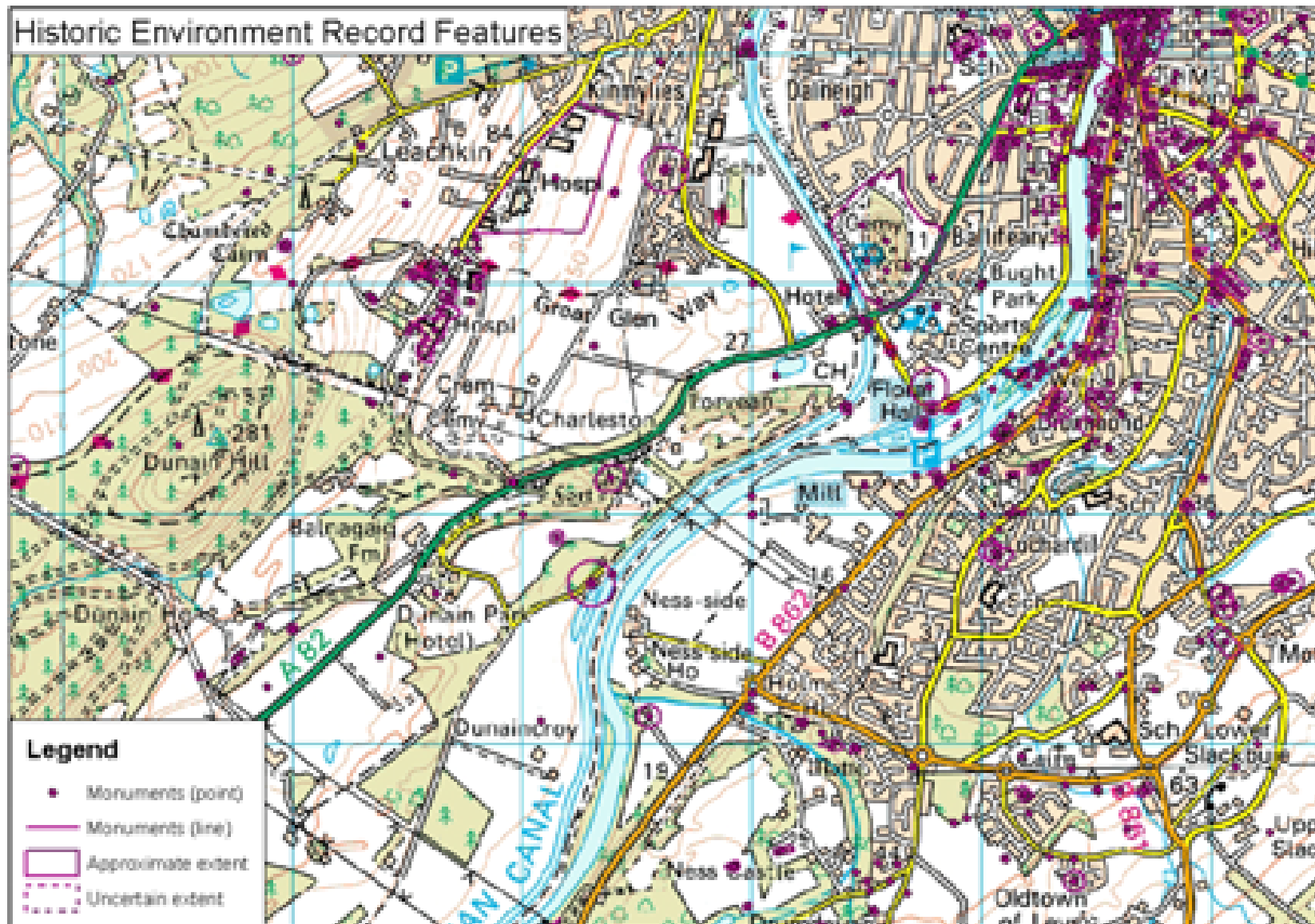
Sustainable Transport.	<p>Number of people using public transport for social, commuting and business travel.</p> <p>Number of people using active travel for social, commuting and business travel.</p>	<p>http://www.highland.gov.uk/yourenvironment/roadandtransport/transportplanning/localtransportstrategy.htm</p> <p>Census Results</p> <p>Scottish Household Survey.</p>
Material Assets		
Water Treatment Works	Number of water treatments works in Highland. Investment in future.	<p>Scottish Water Strategic Asset Capacity and Development Plan (2006);</p> <p>http://www.scottishwater.co.uk/portal/page/portal/SW_PAGE_GROUP_PS_ADMIN/SW_PUB_SCHEME_ADMIN_HOLDING/TAB65572/RELEASED%20STRATEGIC%20CAPACITY%20AND%20DEVELOPMENT%20PLAN%20MARCH%202006%20V2.pdf</p> <p>Scottish Waters Vision for Highlands 2010;</p> <p>http://www.scottishwater.co.uk/portal/page/portal/SWE_PGP_INVESTMENT/SWE_PGE_INVESTMENT/SWE_INV_HIGH_2010</p>
Footpath networks	A number of paths including core paths, rights of way etc run through and connect the project area.	The Highland Councils Core Path Plan.
Cycle paths	Number of designated cycle routes in Highland	<p>Sustrans National Cycle Network Map;</p> <p>http://www.sustrans.org.uk/webfiles/general/sustrans_2008_ncn_map.pdf</p>
Cultural Heritage		
Listed Buildings	There are: 5 B listed buildings 2 C(s) Listed Buildings in the vicinity of the project area.	Historic Scotland Dataset
Schedule Monuments	There are 3 Schedule Monuments in the vicinity of the project area.	Historic Scotland Dataset
Design Landscapes	1 Designed Landscape in the vicinity of the project area.	Historic Scotland Dataset
Conservation Areas	The Inverness Riverside Conservation Area is to the south east of the study area.	Historic Scotland Dataset

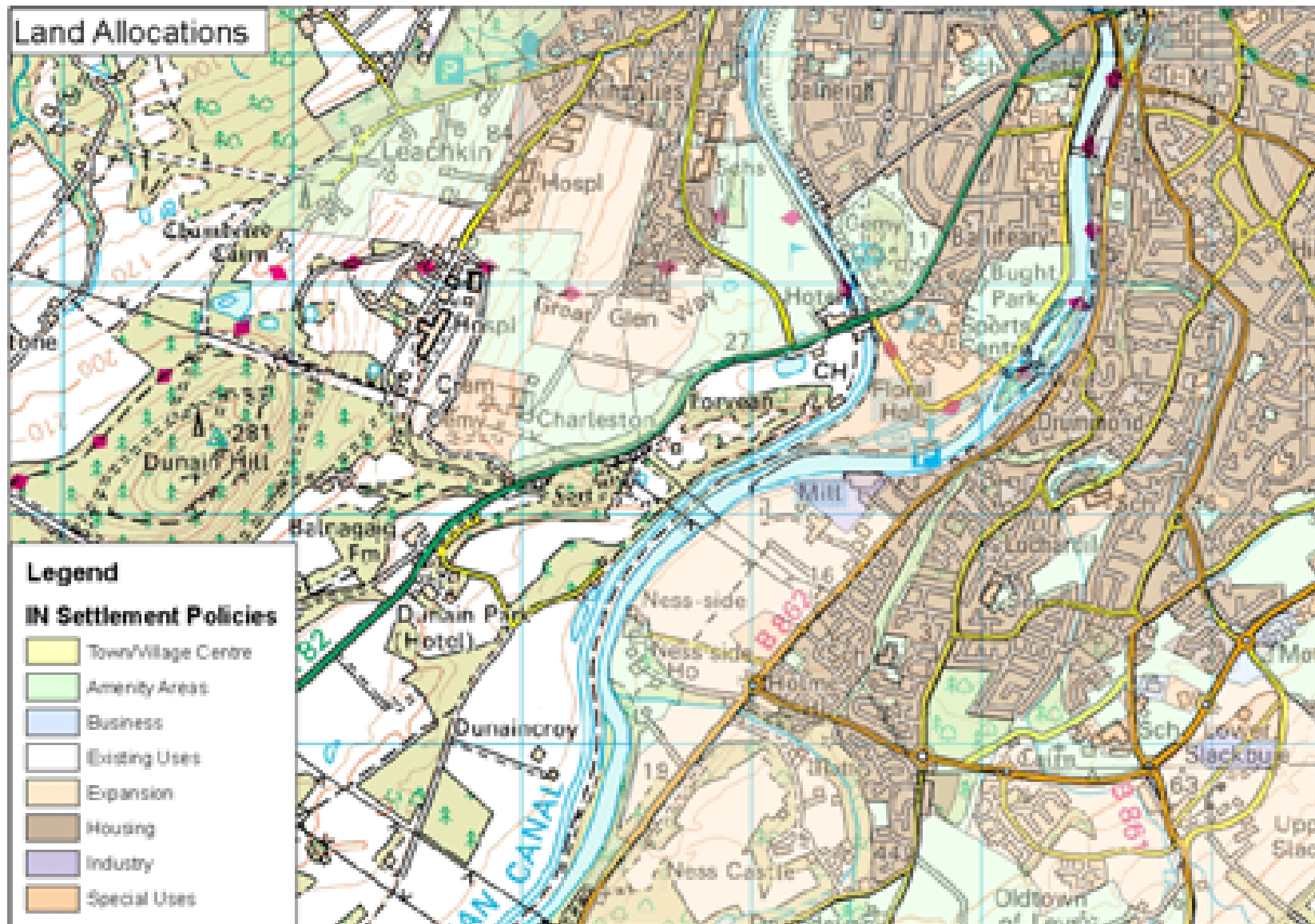
Local Historic Environment Features	There are numerous records within the Highland Historic Environment Record in the vicinity of the project area.	Highland Historic Environment Record
Landscape		
Landscape Character	The project area covers three distinct landscape types	<p>Scottish Natural Heritage: <u><i>Overview of Scotland's national programme of Landscape Character Assessment (2004)</i></u></p> <p>Scottish Natural Heritage (1998) <u><i>Inner Moray Firth Landscape Character Assessment.</i></u></p> <p>Scottish Natural Heritage (1998) <u><i>Inverness District Landscape Character Assessment</i></u></p>
Open Space	There is a significant mix of greenspace across the project area.	Highland Greenspace Audit 2010.

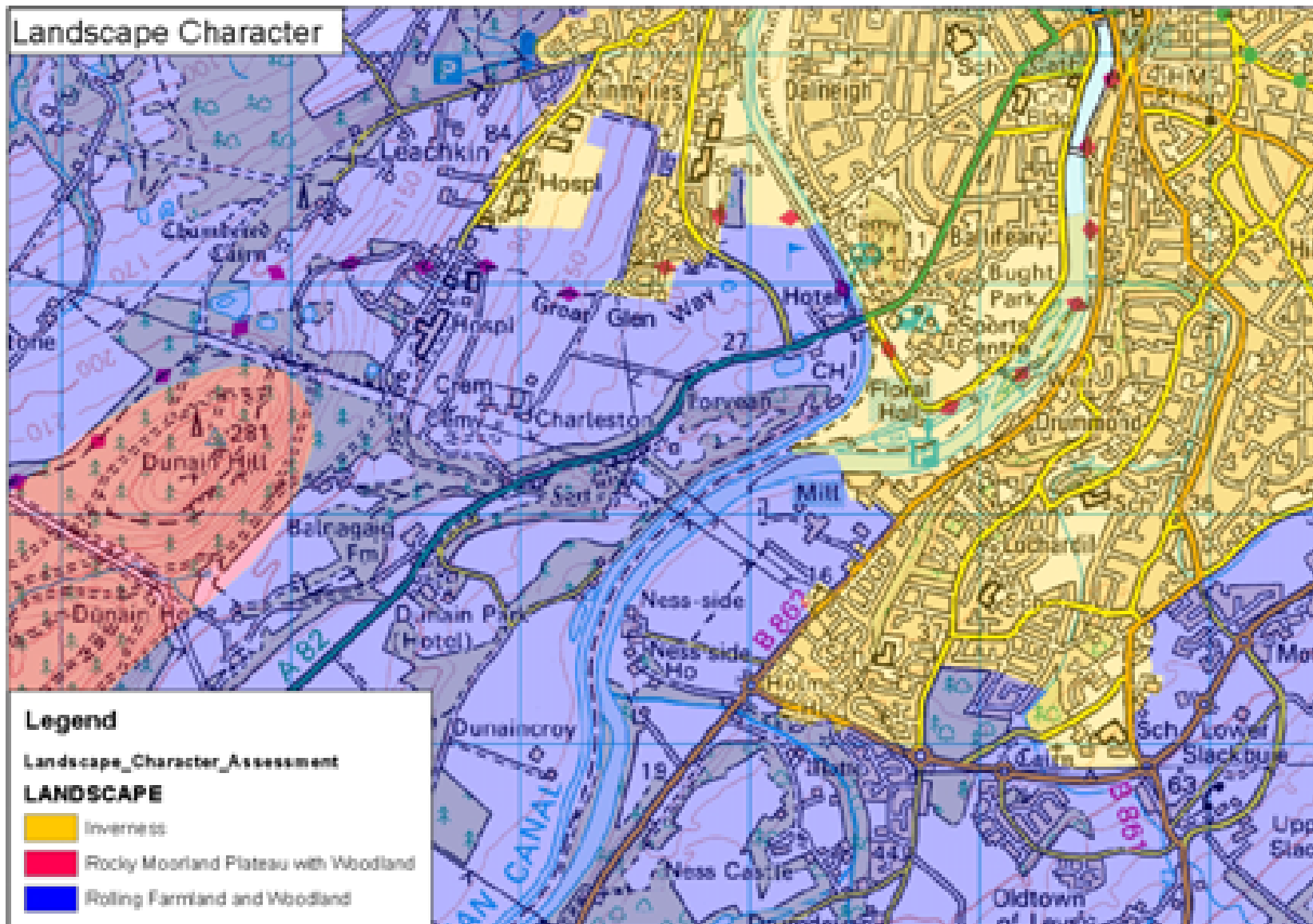




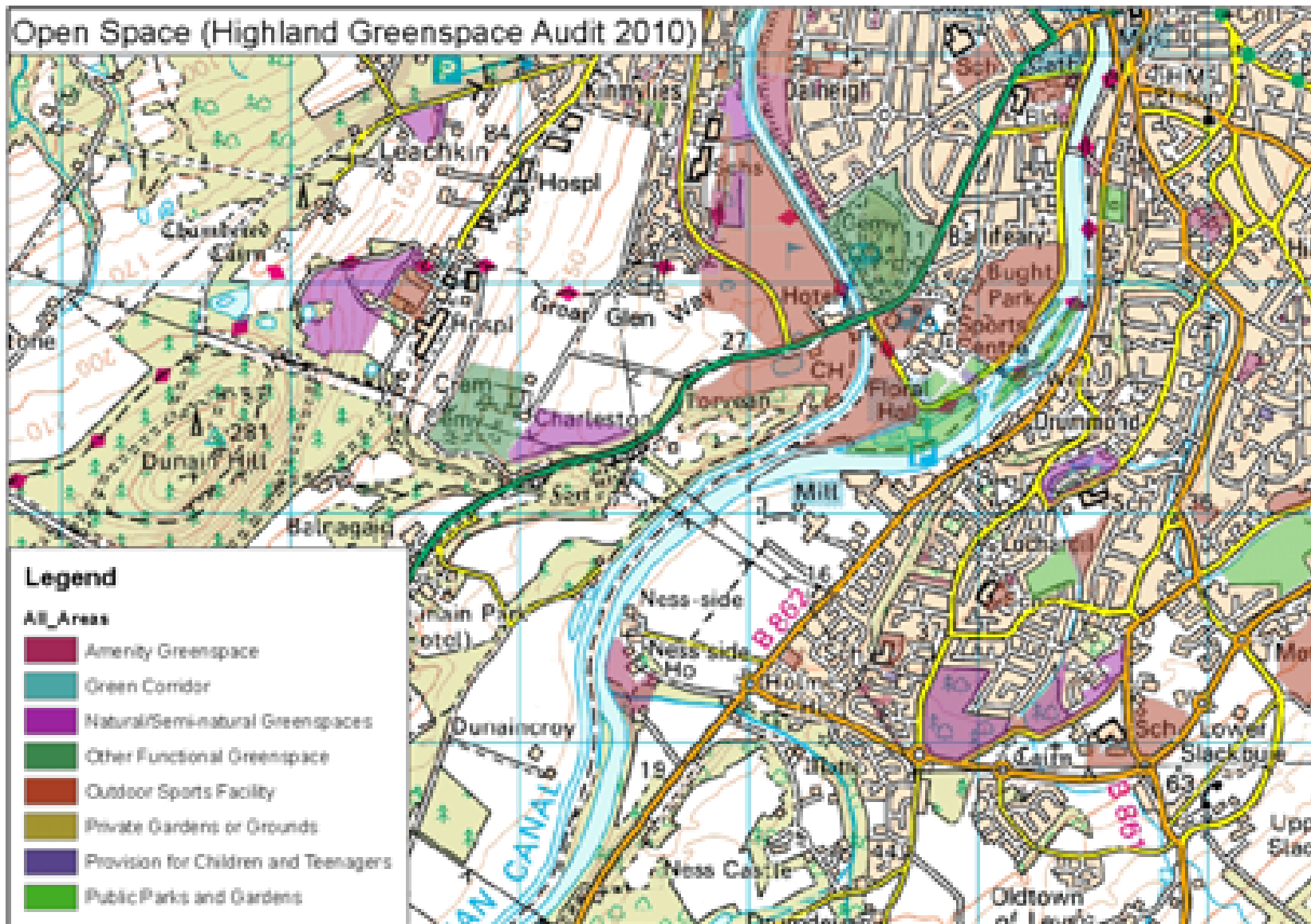




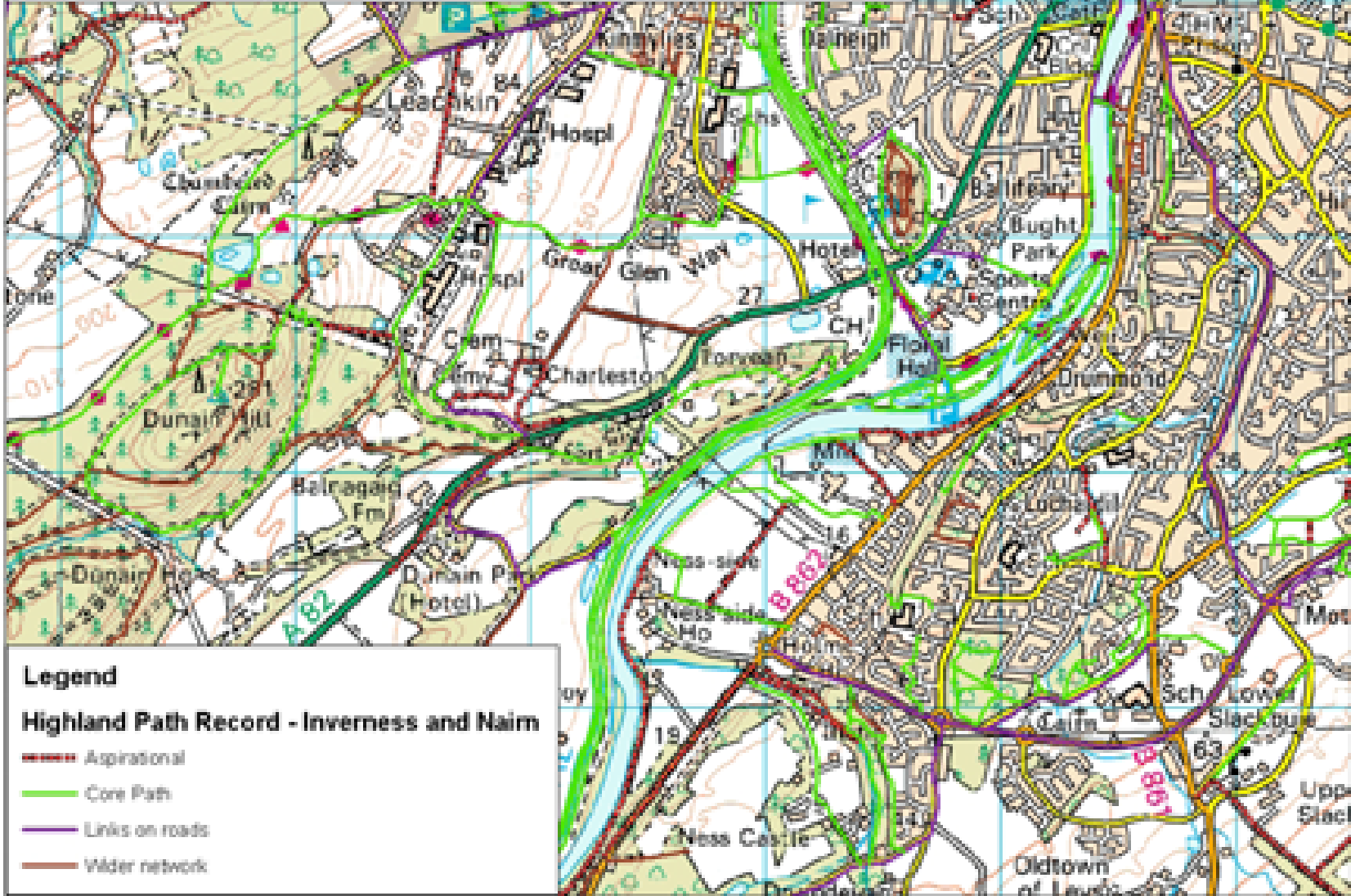








Paths and Trails (Inverness and Nairn Core Path Plan (2010))





Water Quality as taken from SEPA Website – July 2011

