

Highland Community Planning Partnership**Chief Officers' Group – 30.1.14**

| | |
|-------------|----------|
| Agenda Item | 4ii |
| Report No | COG 2/14 |

District Partnerships and Local Community Planning**Report by the Head of Communities and Democratic Engagement****Summary**

This report shows local community planning arrangements currently in place across Highland and proposes that the Guidance for District Partnerships (DPs) is reviewed to enable DPs to strengthen links with local community planning arrangements.

1. Introduction

1.1 At the last Chief Officers' Group it was agreed that District Partnerships were ideally placed to support and strengthen links to the key themes in our Highland community planning model. The themes are:

- Early Years
- Older People
- Safer
- Environment
- Employment
- Economy

1.2 It was also agreed that the Head of Communities and Democratic Engagement would use the Lochaber model (shared at our last meeting) as a model of good practice to help record local community planning arrangements currently in place across Highland.

2. Current Arrangements

2.1 Appendix 1 shows the current arrangements at DP level, following the Lochaber model.

2.2 Early Years

Early Years issues are currently discussed at all DPs. Consideration is being given to dedicated satellite meetings, as per the previous Childcare Partnership arrangements, to deal with the envisaged volume of local issues with regard to the expansion of childcare.

2.3 Older People

Older People issues are also discussed at all DPs but there appears to be some confusion around the role of NHS Locality Planning meetings and DPs. Locality Planning meetings (which are in private) discuss some of the same issues that come up at DPs (in public) and vice versa. It would be helpful if a report was prepared that clarified the role of both and recommended a way forward that adds value.

2.4 Safer

As can be seen from Appendix 1, there are already some local community safety arrangements in place at DP level. It is proposed that where these arrangements currently work well (e.g. Lochaber), local agencies may wish to continue these arrangements. As agreed at the last COG, where locality planning for community safety arrangements do not currently exist, then DPs should be the vehicle to take this forward and the DP Guidance document rewritten to reflect this.

A meeting is scheduled between the Director of Health & Social Care and the Chief Superintendent in early February to conclude arrangements.

2.5 Environment

There are currently gaps in provision at most DP levels and this is being considered by SNH. A dotted line link is sufficient at the moment between DPs and the Environment theme.

2.6 Employment and Economy

Employability Groups exist at all DP levels. Given the emphasis on employment and economy from HC and HIE and the obvious links to health and wellbeing, it would be helpful if a member from each Employability Group were to make links with the relevant DP. If agreed, the DP Guidance will need to be redrafted to reflect this.

3. **Implications**

- 3.1 There are currently no known resource, carbon clever, equalities or risk implications as a result of this report.

Recommendation

The Chief Officers' Group is recommended to agree that:

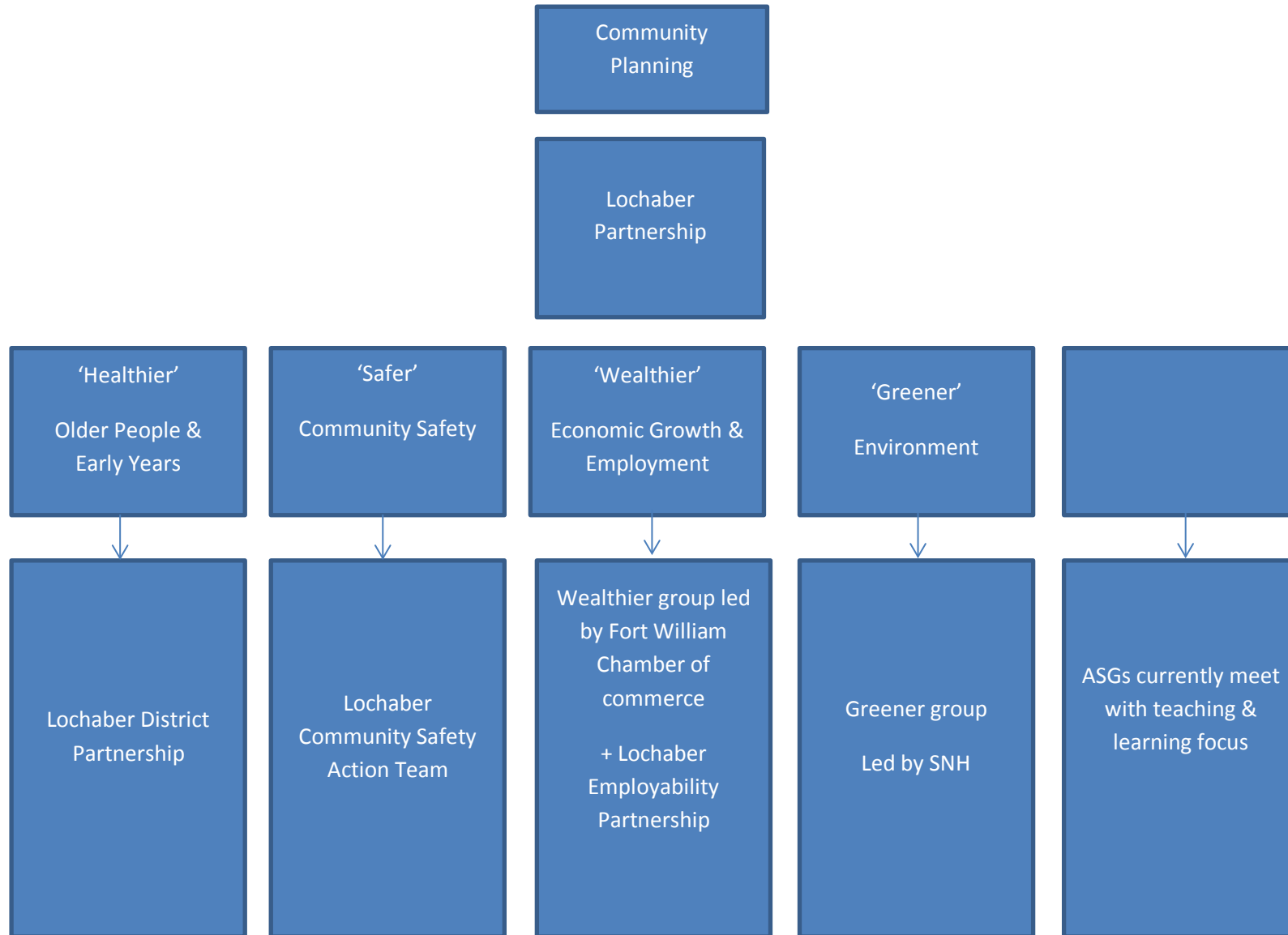
- (i) a joint report be prepared by HC and NHSH for the next COG clarifying the role of NHS Locality Planning meetings and District Partnerships and recommending a way forward that adds value;
- (ii) District Partnerships be used to deliver the safer theme where there are currently no existing arrangements at the DP level (subject to such arrangements being finalised at a meeting between the Director of Health and Social Care and the Chief Superintendent in early February);
- (iii) a member from each Employability Group make links with the relevant DP and attend that DP where necessary; and
- (iv) the District Partnership Guidance document be redrafted to reflect these arrangements.

Designation Head of Community and Democratic Engagement

Author William Gilfillan

Date 27 January 2014

Lochaber District Partnership Area:



Lochaber District Partnership area

Healthier – District Partnership meets 4 times per year

Safer – Lochaber Community safety group meets 4 times per year

Wealthier – Economic development group is led by the Chamber of Commerce. Lochaber Employability partnership meets involving THC, SDS, JC and a range of partners.

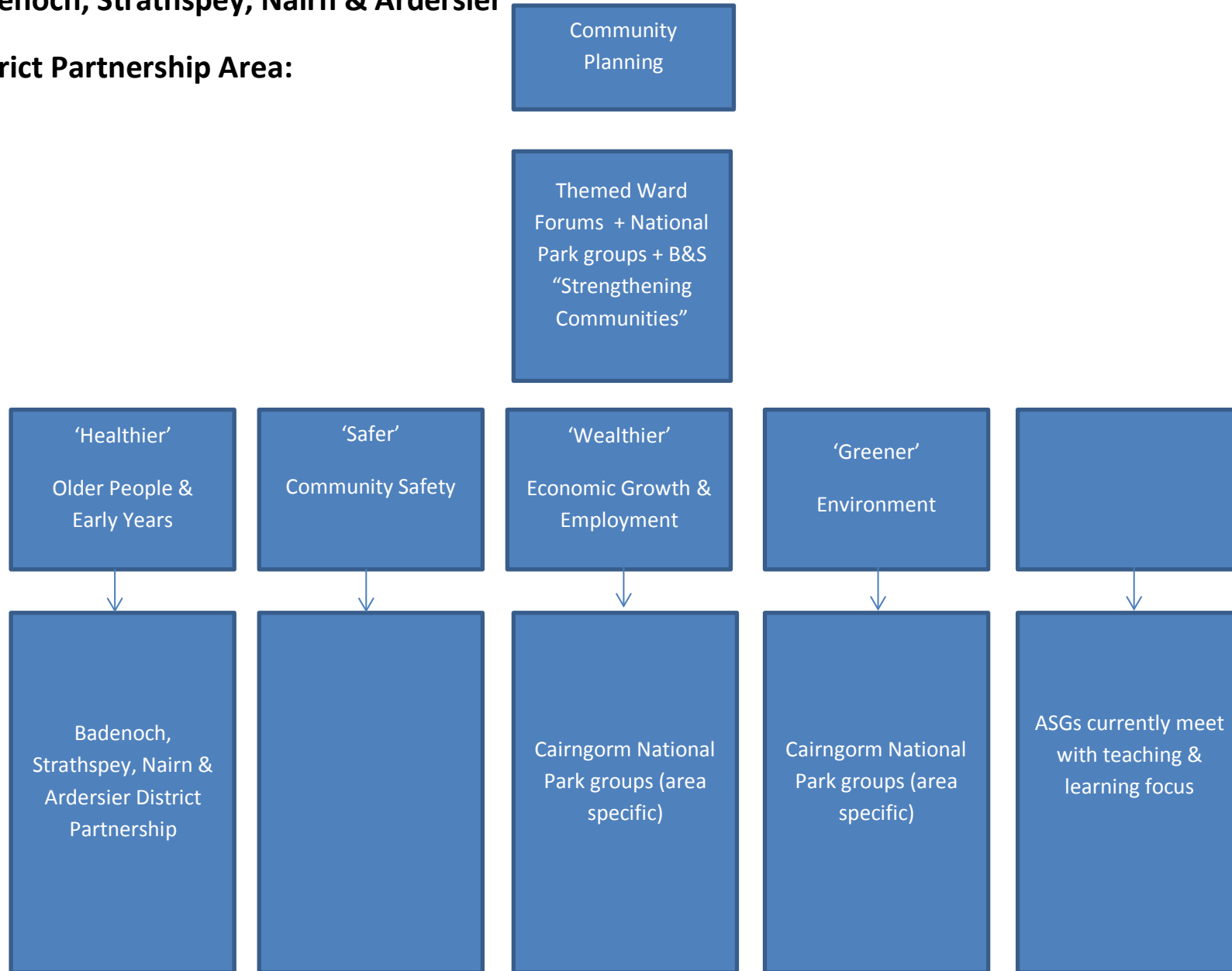
Greener – Group is led by SNH

(ASG's) – ASGs currently meet with teaching & learning focus

Community planning – The Lochaber Partnership takes overall responsibility for community planning in Lochaber

Badenoch, Strathspey, Nairn & Ardersier

District Partnership Area:



Badenoch, Strathspey, Nairn & Ardersier District Partnership area

Healthier – District Partnership meets 4 times per year

Safer – informal discussions take place between agencies as and when required. Nothing formalised.

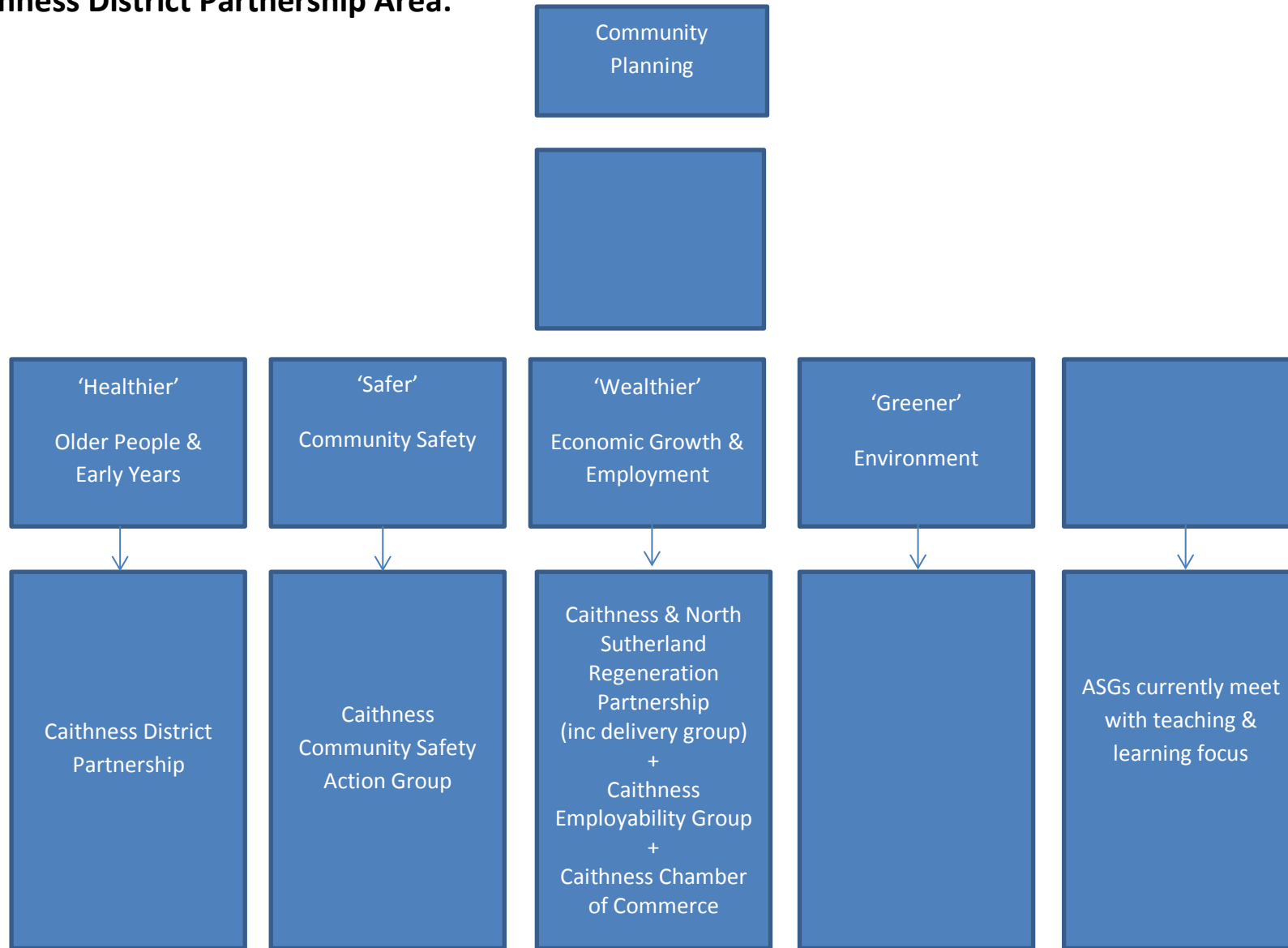
Wealthier – National park groups meet which encompasses discussion on economic development issues. (area specific)

Greener – National park groups meet which encompasses discussion on environmental issues. (area specific)

(ASG's) – ASGs currently meet with a teaching & learning focus

Community Planning – Both the Nairn & Badenoch & Strathspey community planning partnerships are in abeyance. The WM is working to re-vitalise these groupings. The Cairngorms National Park authority and Association of Cairngorm communities meet under a community planning agenda for the Park area. A B&S group is also meeting under the 'Strengthening communities project'.

Caithness District Partnership Area:



Caithness District Partnership area

Healthier – District Partnership meets 4 times per year

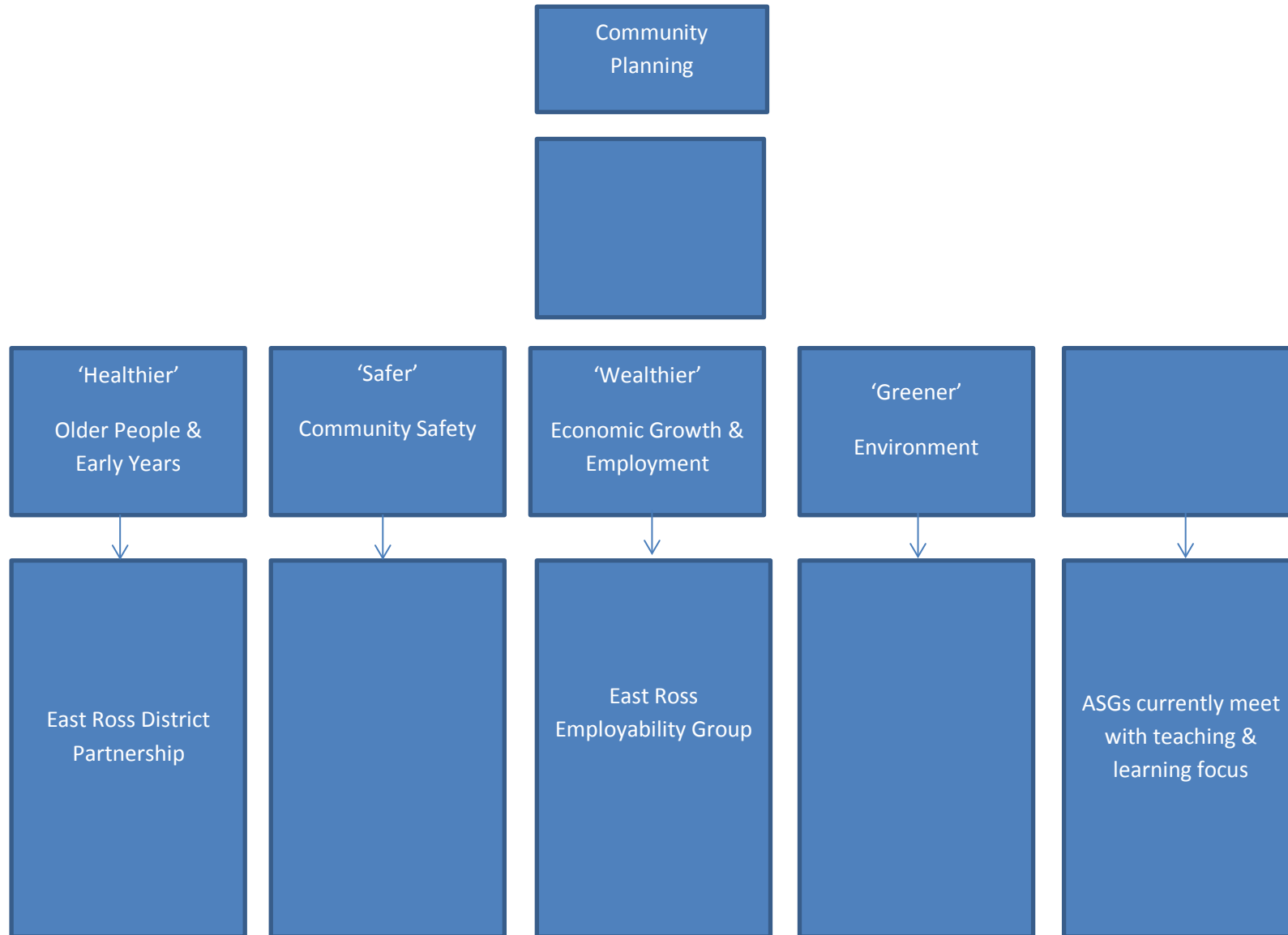
Safer – Caithness community safety Action group meets 4 times per year – wide membership including THC, SFRS, CofC, WA, PS, Vol orgs

Wealthier – Economic development - Caithness and North Sutherland Regeneration partnership meets every 6-8 weeks – wide membership. Operates with a delivery group. Caithness employment group meets every 4-6 weeks and involves THC, SCS and JC.

Greener – no formal grouping in place

(ASG's) – ASGs currently meet with teaching & learning focus

East Ross District Partnership Area:



East Ross District Partnership area

Healthier – District Partnership meets 4 times per year

Safer – no existing grouping known to exist

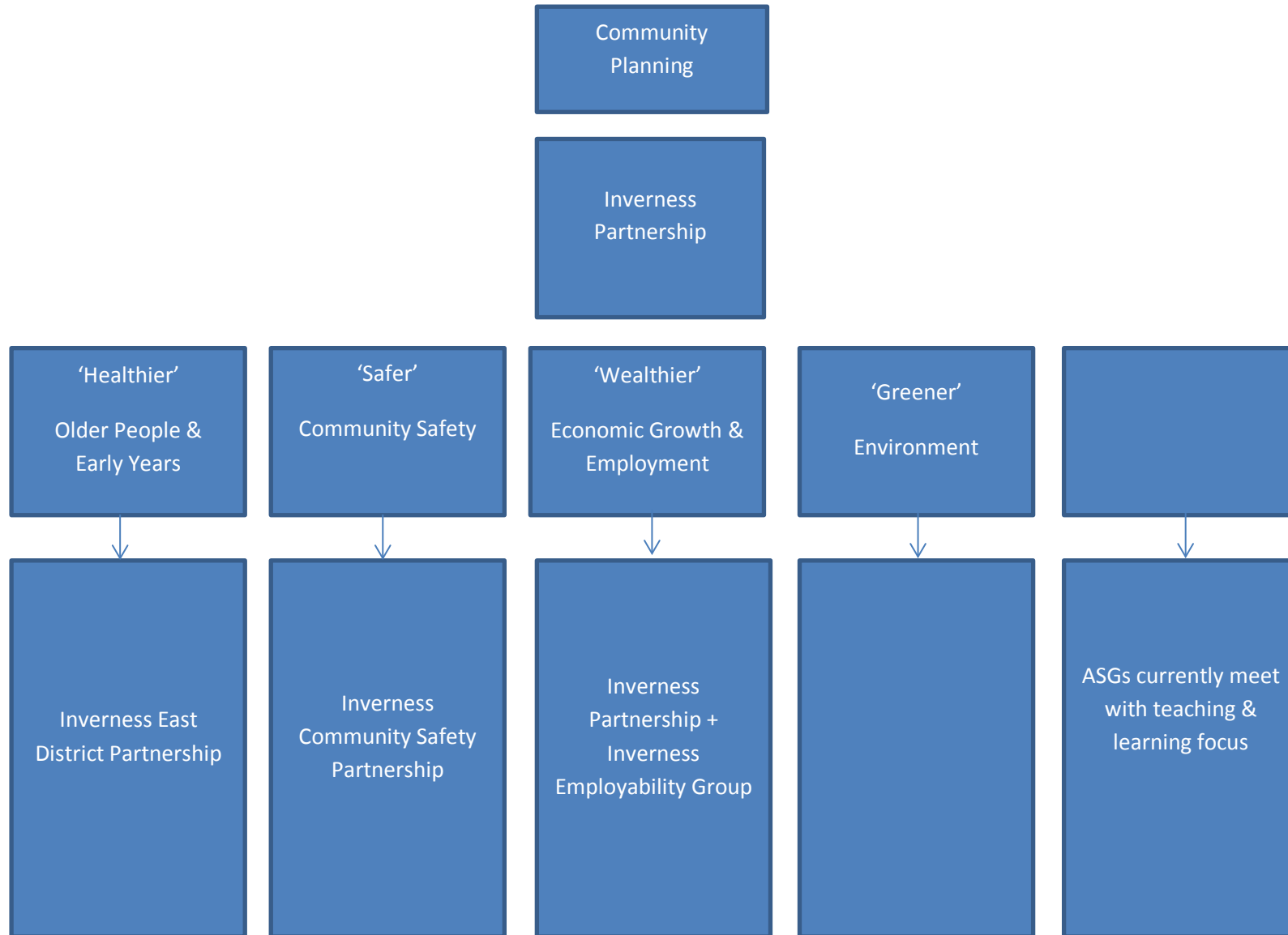
Wealthier – Economic development, no existing grouping known to exist. East Ross employment group meets every 4-6 weeks and involves THC, SDS, JC and a range of other partners.

Greener – no existing grouping known to exist

(ASG's) – ASGs meet focussing on teaching & learning

Community planning – no existing grouping / partnership in place or potentially appropriate

Inverness East District Partnership Area:



Inverness East District Partnership area

Healthier – District Partnership meets 4 times per year

Safer – Operation respect group, currently only covers the urban area of the District

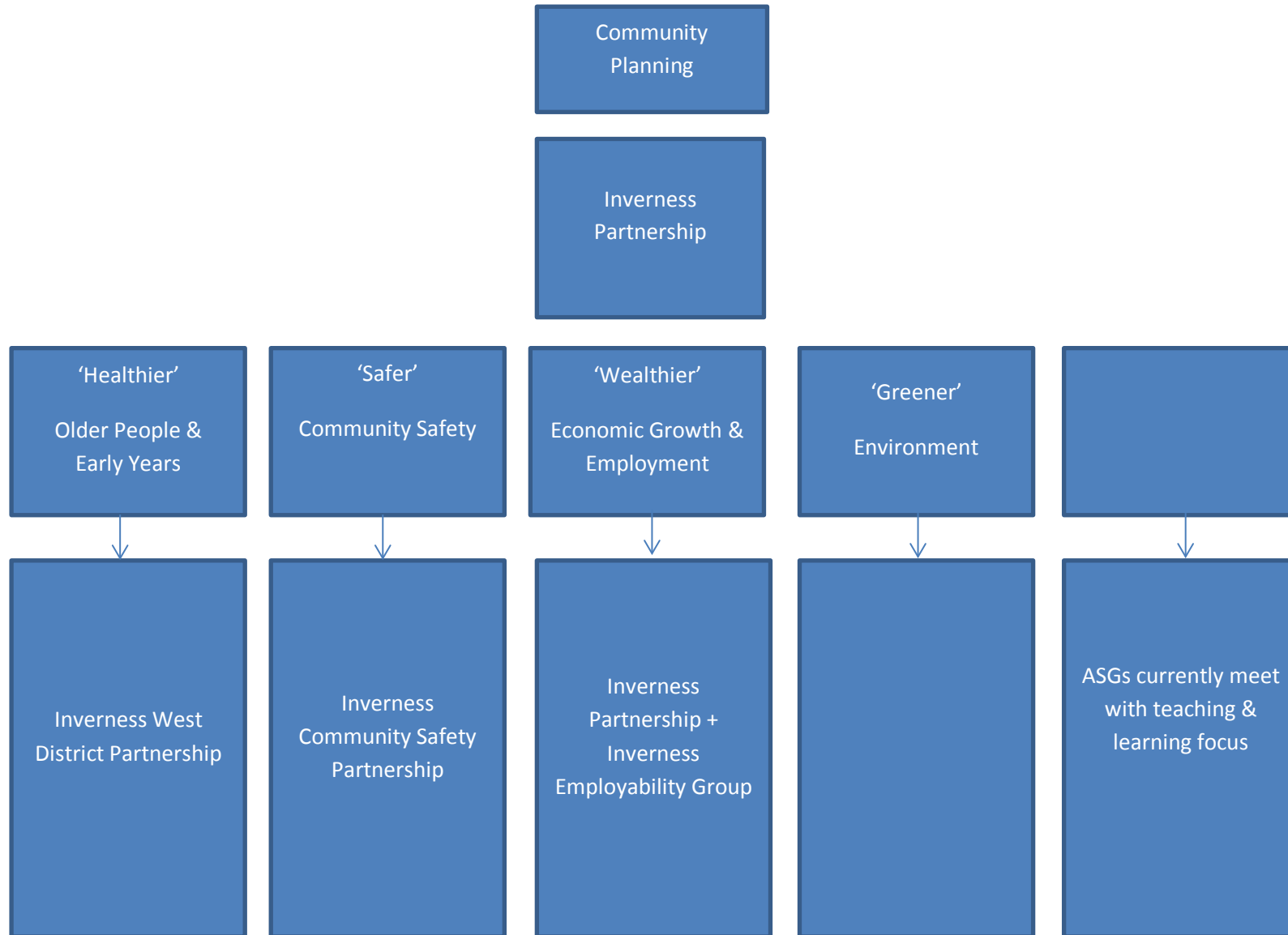
Wealthier – Inverness Partnership meets 4 times per year. Inverness Employability group meets every 4-6 weeks involving THC, SDS, JC and a range of other partners. It covers both the East and West Inverness District partnership areas.

Greener – no formal grouping in place

(ASG's) – ASGs currently meet with teaching & learning focus

Community planning – Inverness Partnership has a community planning role

Inverness West District Partnership Area:



Inverness West District Partnership area

Healthier – District Partnership meets 4 times per year

Safer – Operation respect group, currently only covers the urban area of the District

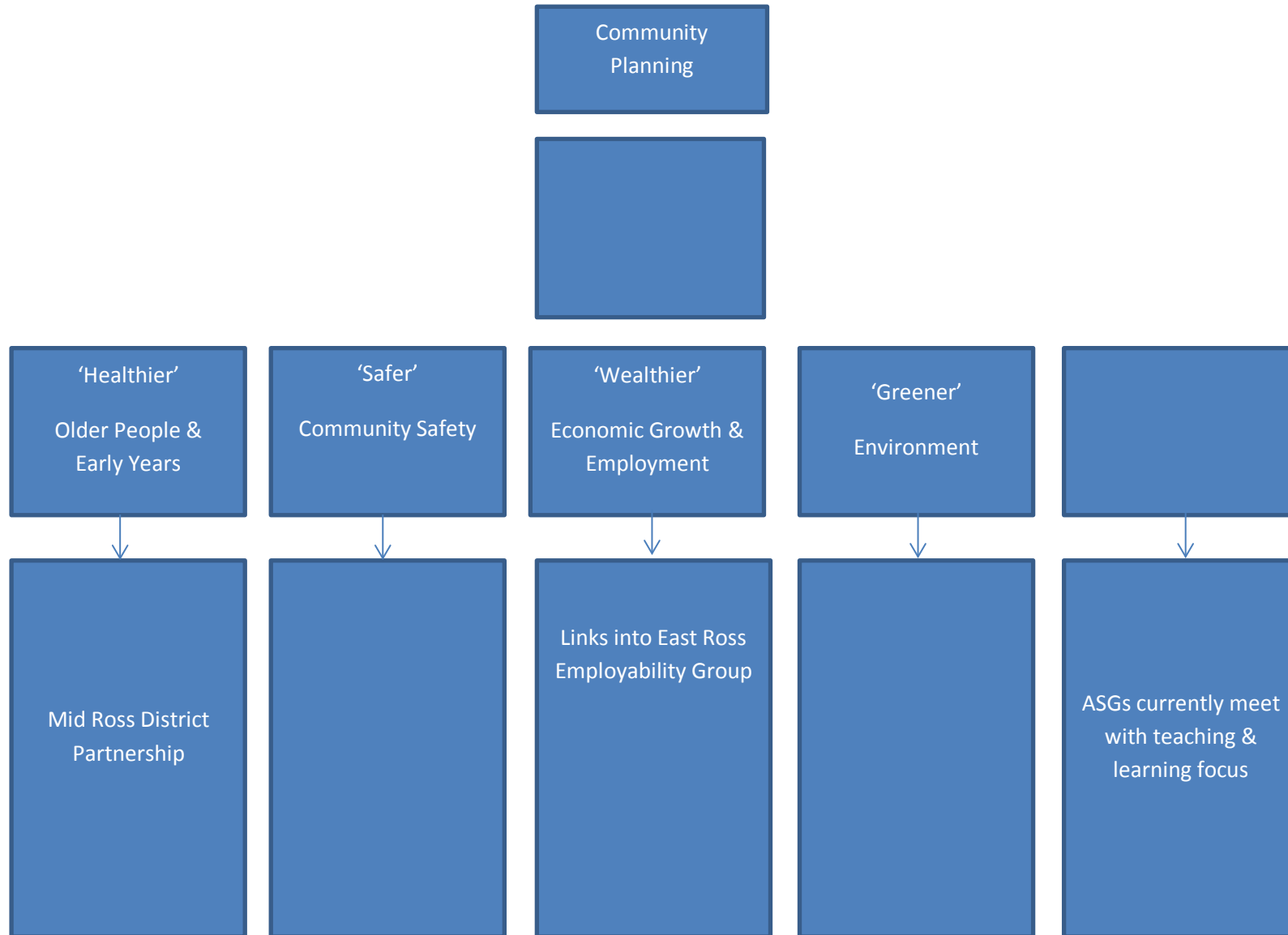
Wealthier – Inverness Partnership meets 4 times per year, Inverness Employability group meets every 4-6 weeks involving THC, SDS, JC and a range of other partners. It covers both the East and West Inverness District partnership areas.

Greener – no formal grouping in place

(ASG's) – ASGs currently meet with teaching & learning focus

Community Planning – Inverness partnership has a community planning role

Mid Ross District Partnership Area:



Mid Ross District Partnership area

Healthier – District Partnership meets 4 times per year

Safer – no existing grouping known to exist

Wealthier – in terms of economic development , no existing grouping known to exist. HC, SDS and JP link into East Ross employability group

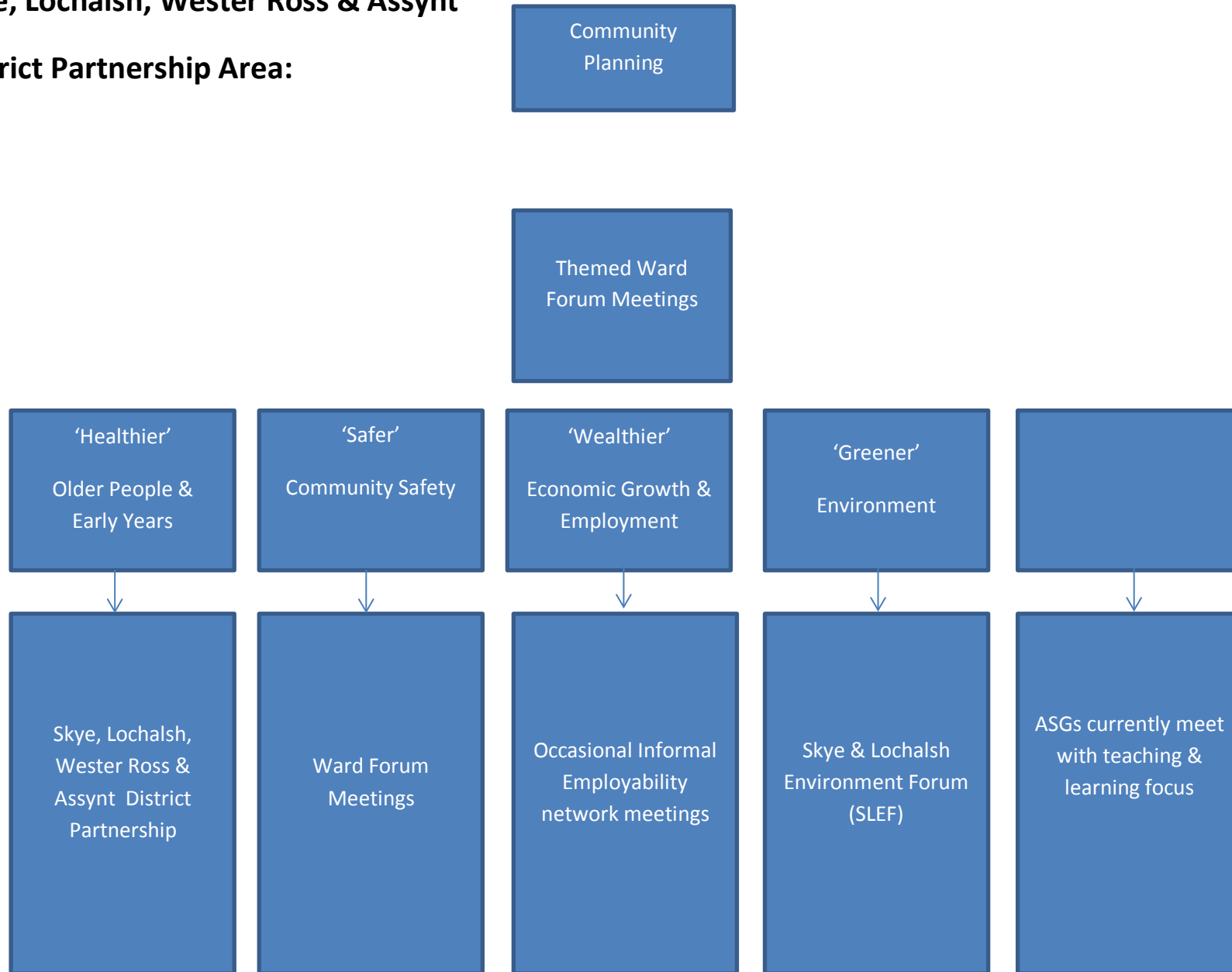
Greener – no existing grouping known to exist

(ASG's) – ASGs meet focussing on teaching & learning

Community planning – no existing grouping / partnership in place or potentially appropriate

Skye, Lochalsh, Wester Ross & Assynt

District Partnership Area:



Skye, Lochalsh, Wester Ross & Assynt District Partnership area

Healthier – District Partnership meets 4 times per year

Safer – The Ward Forum meets quarterly, Police and Fire have a standing item on the agenda and provide the opportunity to discuss community safety issues.

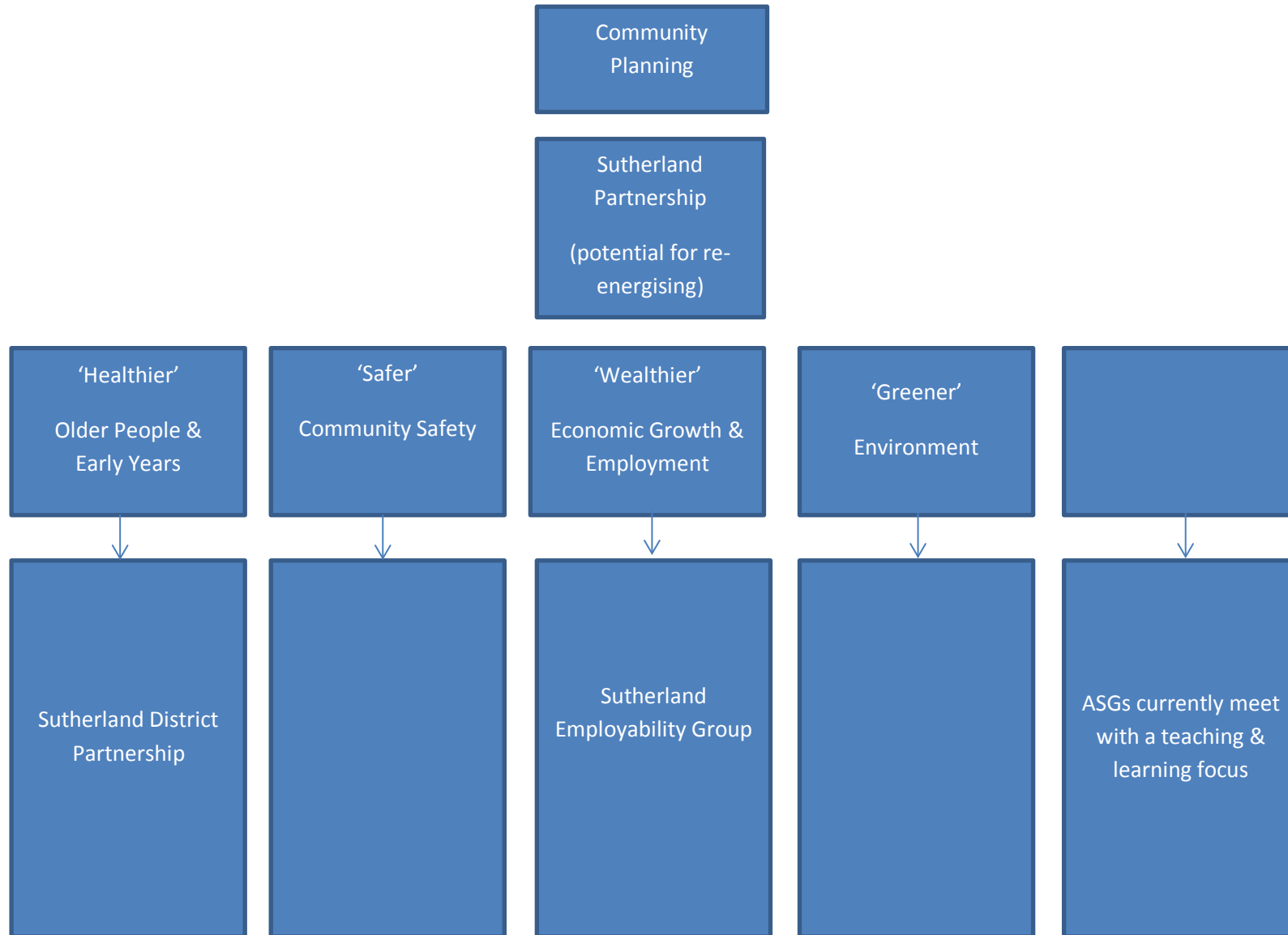
Wealthier – The Ward Manager has discussed this with his HIE colleague and as far as they are aware there is no group meeting that discusses economic development issues. Informal discussions occasionally take place on employment issues between THC, SDS and JC.

Greener – SLEF is a partnership open to anyone with an interest in the natural and cultural habitats of the area. They work with the local biodiversity action plan.

(ASG's) – ASGs currently meet with a teaching & learning focus

Community Planning – the Skye Ward Forum has a broad membership inc the Voluntary sector, Cc's Police Scotland, SF&R service, NHS etc. The Forum meets every quarter and is themed. The Forum is well placed to provide an opportunity for partners to come together however the geographical spread of the area makes it difficult for all communities to be involved in these meetings. The meeting venues are rotated - (Ullapool, Portree, Kyle and Lochcarron)

Sutherland District Partnership Area:



Sutherland District Partnership area

Healthier – District Partnership meets 4 times per year

Safer – no existing grouping known to exist

Wealthier – Economic development - no existing grouping known to exist. Sutherland employment group meets every 4-6 weeks and involves THC, SCS and JC.

Greener – no existing grouping known to exist

(ASG's) – ASGs currently meet with a teaching & learning focus

Community planning – The Sutherland Partnership still exists via a small core group consisting of HC, vol sector, HIE, FCS and SNH representation. Meets quarterly. Potential of re-energising.