

Agenda Item	9
Report No	CC/08/25

The Highland Council

Committee: Caithness Area Committee

Date: 20 January 2025

Report Title: Thurso High Associated School Group Overview

Report By: Executive Chief Officer, Education & Learning

1. Purpose/Executive Summary

- 1.1 This report provides an update of key information in relation to the schools within the Thurso High Associated School Group (ASG) and provides useful updated links to further information in relation to these schools.
- 1.2 The primary schools in this area serve 822 pupils, ELC settings serve 143 children (123 in LA settings and 20 in Partner settings as at September Census), with the secondary school serving 723 young people.

2. Recommendations

- 2.1 Members are asked to:
 - i. Scrutinise and note the content of the report

3. Implications – there are no implications

- 3.1 Resource
- 3.2 Legal
- 3.3 Community (Equality, Poverty, Rural and Island)
- 3.4 Climate Change / Carbon Clever
- 3.5 Risk
- 3.6 Health and Safety (risks arising from changes to plant, equipment, process, or people)
- 3.7 Gaelic

4. School Information

4.1 School website links

Secondary – [Link to Thurso High School website](#)

Primary [Link to School information on Highland Council website](#)

School	Link to School Webpage
Castletown Primary	Link
Crossroads Primary	Link
Halkirk Primary	<u>Website Under Construction*</u>
Miller Academy Primary	Link
Mount Pleasant Primary	<u>Website Under Construction*</u>
Pennyland Primary	<u>Website Under Construction*</u>
Reay Primary	Link

4.2 Standards and Quality Reports – latest reports

School	Leadership of change	Learning, teaching and assessment	Ensuring wellbeing, equality and inclusion	Raising attainment and achievement
Castletown Primary	Good	Good	Good	Good
Crossroads Primary	Very Good	Very Good	Very Good	Very Good
Halkirk Primary	Good	Good	Very Good	Good
Miller Academy Primary	Very good	Very good	Very good	Very good
Mount Pleasant Primary	Very good	Good	Good	Satisfactory
Pennyland Primary	Good	Good	Satisfactory	Good
Reay Primary	Good	Good	Good	Good

ELC	Leadership of change	Learning, teaching and assessment	Ensuring wellbeing, equality and inclusion	Raising attainment and achievement
Castletown PS Nursery	Good	Good	Good	Good
Crossroads PS Nursery	Good	Good	Very Good	Good
Miller Academy PS Nursery	Very good	Very good	Very good	Very good
Mount Pleasant PS Nursery	Satisfactory	Satisfactory	Satisfactory	Satisfactory
Pennyland PS Nursery	Good	Satisfactory	Satisfactory	Satisfactory

4.3 Education Scotland Inspection reports

School	Date of Latest Published Report	Link to Education Scotland Pages
Castletown Primary	27/08/2024	Link
Crossroads Primary	+ 5 Years	Link
Halkirk Primary	+ 5 Years	Link
Miller Academy Primary	+ 5 Years	Link
Mount Pleasant Primary	+ 5 Years	Link
Pennyland Primary	+ 5 Years	Link
Reay Primary	+ 5 Years	Link

Education Scotland website shows review and inspection reports in last 5 years, older reports are no longer available to view on the site.

5 School Rolls

5.1 ASG SCHOOL ROLLS – Session 2024-25

Primary School	P1	P2	P3	P4	P5	P6	P7	Total
Castletown Primary	8	9	9	9	13	11	18	77
Crossroads Primary		3		2	1	1		7
Halkirk Primary	12	13	12	18	19	5	13	92
Miller Academy Primary	51	51	39	28	39	30	42	280
Mount Pleasant Primary	10	21	28	27	20	32	29	167
Pennyland Primary	19	10	20	36	18	30	29	162
Reay Primary	4	5	5	6	8	6	3	37
Total	104	112	113	126	118	115	134	822

5.2

School Name	S1	S2	S3	S4	S5	S6	TOTAL S1-S6
Thurso High School	135	130	128	141	113	76	723

6 School Roll and Capacity Forecasts

The school roll and capacity forecast for the ASG are in Appendix 1.

Attendance/Absence/Exclusions – Session 2022/23

Primary Schools	%Actual Attendance	% Authorised Absences	% Unauthorised Absences	No of Exclusions	Exclusion Rates per 1000 pupils
National Primary(2022-23)	92.2%	5.3%	2.6%	1760	4.5
Highland Primary (2022-23)	92.0%	6.1%	c	c	c
Castletown Primary	91.3%	7.3%	1.4%	0	0
Crossroads Primary	89.7%	8.2%	2.0%	0	0
Halkirk Primary	93.2%	5.6%	1.3%	0	0
Miller Academy Primary	92.9%	6.1%	1.0%	0	0
Mount Pleasant Primary	90.0%	7.5%	2.4%	0	0

Pennyland Primary	89.9%	7.4%	c	c	c
Reay Primary	93.4%	5.2%	1.3%	0	0

Secondary School	%Actual Attendance	% Authorised Absences	% Unauthorised Absences	No of Exclusions	Exclusion Rates per 1000 pupils
National Secondary (2022-23)	87.7	7.1	5.1	9724	31.5
Highland Secondary (2022-23)	86.8	8.1	4.9	587	42.2
Thurso High School	86.1%	7.7%	6.1%	25	34.19

7 Attainment Profile

7.1 Primary Attainment – Pupils Achieving Expected National Curriculum for Excellence Levels - P1,4,7 Combined, Literacy and Numeracy

2023/24	Roll P1/4/7	Reading	Writing	Listening & Talking	Numeracy
National		80.5%	76.2%	87.3%	80.3%
Highland		76.4%	70.9%	86.5%	74.4%
Castletown Primary	35	80-90%	70-80%	90+%	80-90%
Crossroads Primary	2	c	c	c	c
Halkirk Primary	43	80-90%	60-70%	80-90%	80-90%
Miller Academy Primary	121	90+%	90+%	90+%	90+%
Mount Pleasant Primary	66	50-60%	40-50%	60-70%	40-50%
Pennyland Primary	84	70-80%	60-70%	70-80%	60-70%
Reay Primary	13	c	c	c	c

*c represents small numbers that are suppressed to maintain confidentiality.

2022/23	Roll P1/4/7	Reading	Writing	Listening & Talking	Numeracy
National		80%	75%	87%	80%
Highland		74%	68%	74%	72%
Castletown Primary	40	70-80%	70-80%	80-90%	70-80%
Crossroads Primary	-	c	c	c	c
Halkirk Primary	35	80-90%	70-80%	90+%	70-80%
Miller Academy Primary	88	80-90%	80-90%	90+%	80-90%
Mount Pleasant Primary	87	60-70%	60-70%	70-80%	60-70%
Pennyland Primary	91	60-70%	50-60%	80-90%	70-80%
Reay Primary	17	c	c	c	c

2021/22	Roll P1/4/7	Reading	Writing	Listening & Talking	Numeracy
National		78%	73%	86%	78%
Highland		71%	63%	81%	69%
Castletown Primary	38	70-80%	60-70%	90+%	80-90%
Crossroads Primary	7	c	c	c	c
Halkirk Primary	44	60-70%	60-70%	80-90%	60-70%
Miller Academy Primary	92	80-90%	80-90%	90+%	80-90%
Mount Pleasant Primary	88	60-70%	60-70%	70-80%	60-70%
Pennyland Primary	99	40-50%	30-40%	60-70%	40-50%
Reay Primary	15	c	c	c	c

7.2 Secondary Attainment

School leavers Achieving Literacy

Establishment	Year	% Level 4 Literacy	% Level 5 Literacy
Thurso High	2022	94%	83%
Virtual Comparator	2022	91%	77%
Thurso High	2021	94%	90%
Virtual Comparator	2021	96%	85%
Thurso High	2020	93%	87%
Virtual Comparator	2020	92%	80%

School Leavers Achieving Numeracy

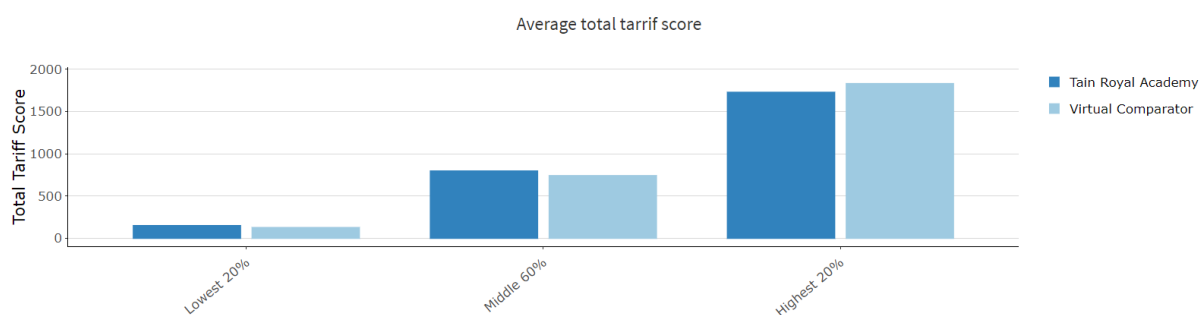
Establishment	Year	% Level 4 Numeracy	% Level 5 Numeracy
Thurso High	2022	90%	75%
Virtual Comparator	2022	88%	65%
Thurso High	2021	97%	81%
Virtual Comparator	2021	93%	75%
Thurso High	2020	91%	67%
Virtual Comparator	2020	89%	70%

Senior Phase

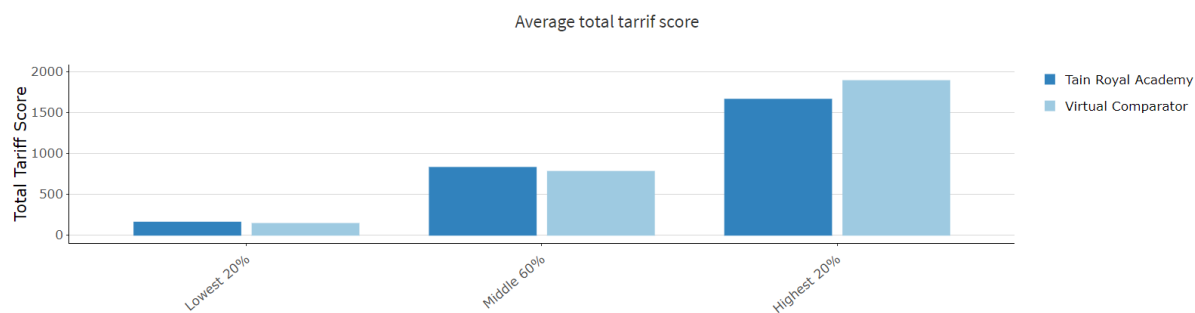
Average Total Tariff Score for Leavers

Establishment	Year	Lowest 20%	Middle 60%	Highest 20%
Thurso High	2022	147	794	1726
Virtual Comparator	2022	124	739	1829
Thurso High	2021	153	823	1657
Virtual Comparator	2021	137	774	1885
Thurso High	2020	173	912	1752
Virtual Comparator	2020	144	873	1901

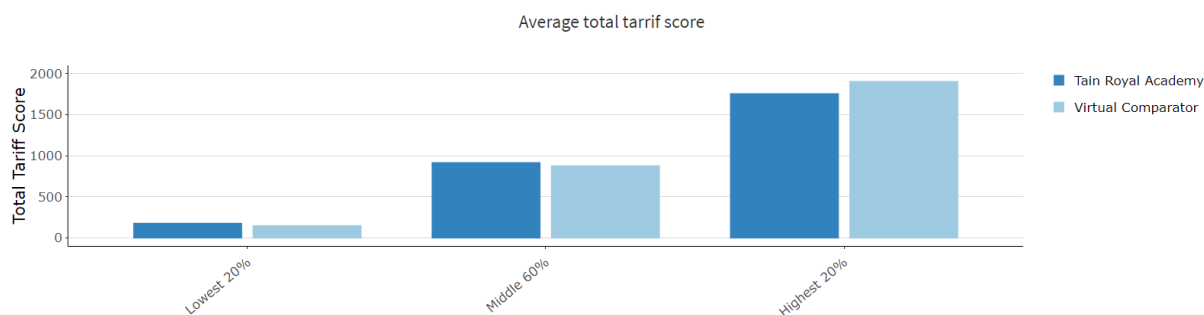
7.3 2022



7.4 2021



7.5 2020



7.6 Pupil Destinations 16+

Leaver destination information is taken from the School Leaver Destination data collected by Skills Development Scotland (SDS) on behalf of the Scottish Government.

	% Positive Destinations		
	2020/21	2021/22	2022/23
Thurso High	95.33	93.29	97.22
Highland	94.33	94.45	95.27
Scotland	95.48	95.74	95.87

Number of pupils leaving in school year:

Total No. Leavers	Thurso High School	HIGHLAND	SCOTLAND
2020/21	82	2328	50719
2021/22	77	2559	55211
2022/23	107	2474	54719

Destinations of Pupils (%)

	Thurso High School			HIGHLAND			SCOTLAND		
DESTINATION	20/21	21/22	22/23	20/21	21/22	22/23	20/21	21/22	22/23
Higher Education	42.68	33.76	36.45	36.38	34.11	33.10	45.11	41.27	40.3
Further Education	23.17	12.98	16.82	18.08	19.54	20.53	23.29	25.45	26.62
Training	3.66	3.89	0.93	2.71	1.52	1.9	3.67	2.91	3.35
Employment	28.05	42.85	37.38	36.6	38.73	39.05	22.58	25.12	24.34
Voluntary	1.22	1.29	0	0.43	0.31	0.53	0.37	0.47	0.52
Activity Agreements	0	0	0	0	0	0	0	0	0
Unemployed Seeking	0	5.19	4.67	3.14	2.89	2.95	2.53	2.32	2.24
Unemployed Not Seeking	1.22	0	3.74	2.1	1.76	1.62	1.69	1.55	1.57
Unknown	0	0	0	0.43	0.9	0.16	0.3	0.4	0.32

Note: National averages have been calculated from the figures for all available local authority and grant-aided schools, whereas the local authority averages are based on local authority schools only.

Designation: Interim Chief Officer

Date: 9 January 2025

Author: Annika Jansson

Background Papers:

Appendix 1: School Roll and Capacity Forecast for ASG

APPENDIX 1 School Roll and Capacity Forecast for ASG

School Roll Forecast

Thurso High School

Thurso High School

5139120	2023/24	2024/25	2025/26	2026/27	2027/28	2028/29	2029/30	2030/31	2031/32	2032/33	2033/34	2034/35	2035/36	2036/37	2037/38	2038/39
S 1	131	133	134	114	121	132	113	116	109	99	100	109	101	107	108	107
S 2	134	131	133	134	114	121	132	113	116	109	99	100	109	101	108	109
S 3	143	134	131	133	134	114	121	132	113	116	109	99	100	109	101	109
S 4	148	143	134	131	133	134	114	121	132	113	116	109	99	100	109	101
S 5	122	129	125	117	114	116	117	99	105	115	98	101	95	86	87	95
S 6	87	81	86	83	77	76	77	78	66	70	76	65	67	63	57	58
Total Roll	765	751	743	712	693	693	674	659	641	622	598	583	571	566	570	579
Total Capacity	1079	1079	1079	1079	1079	1079	1079	1079	1079	1079	1079	1079	1079	1079	1079	1079
Tot Roll - Tot Cap	-314	-328	-336	-367	-386	-386	-405	-420	-438	-457	-481	-496	-508	-513	-509	-500
Tot Roll/Tot Cap %	71%	70%	69%	66%	64%	64%	62%	61%	59%	58%	55%	54%	53%	52%	53%	54%

School Roll Forecast

Thurso High School

Castletown Primary

5100321	2023/24	2024/25	2025/26	2026/27	2027/28	2028/29	2029/30	2030/31	2031/32	2032/33	2033/34	2034/35	2035/36	2036/37	2037/38	2038/39
P 1	10	13	5	15	11	10	11	11	12	11	12	11	11	12	11	12
P 2	9	10	13	5	15	11	10	11	12	11	12	11	12	11	12	11
P 3	10	9	10	13	5	15	11	10	11	12	12	11	12	11	12	12
P 4	13	10	9	10	13	6	14	11	10	12	12	11	12	12	12	11
P 5	10	13	10	9	10	13	6	14	12	10	11	12	12	12	12	12
P 6	19	10	13	10	9	10	13	6	15	11	10	12	12	12	12	12
P 7	11	19	10	13	10	10	10	13	5	15	11	11	12	12	12	12
Total Roll	82	84	70	75	73	75	75	76	77	82	80	79	83	82	83	82
Total Capacity	188	188	188	188	188	188	188	188	188	188	188	188	188	188	188	188
Tot Roll - Tot Cap	-106	-104	-118	-113	-115	-113	-113	-112	-111	-106	-108	-109	-105	-106	-105	-106
Tot Roll/Tot Cap %	44%	45%	37%	40%	39%	40%	40%	40%	41%	44%	43%	42%	44%	44%	44%	44%

School Roll Forecast
Thurso High School
Crossroads Primary

5100429	2023/24	2024/25	2025/26	2026/27	2027/28	2028/29	2029/30	2030/31	2031/32	2032/33	2033/34	2034/35	2035/36	2036/37	2037/38	2038/39
P 1	2	2	1	4	1	2	3	2	2	3	2	2	3	2	3	2
P 2	0	2	2	1	4	2	2	2	2	3	2	2	3	2	2	3
P 3	3	0	2	2	2	3	2	2	2	2	3	2	3	2	2	3
P 4	1	3	0	2	2	2	4	1	2	2	3	2	3	2	2	3
P 5	1	1	3	0	2	2	2	4	1	2	3	2	2	3	2	3
P 6	0	1	1	3	0	2	2	2	4	1	2	3	2	3	2	3
P 7	1	0	1	1	3	0	3	2	1	4	2	2	2	3	2	3
Total Roll	8	9	10	13	14	13	18	15	14	17	17	15	18	17	15	20
Total Capacity	50	50	50	50	50	50	50	50	50	50	50	50	50	50	50	50
Tot Roll - Tot Cap	-42	-41	-40	-37	-36	-37	-32	-35	-36	-33	-33	-35	-32	-33	-35	-30
Tot Roll/Tot Cap %	16%	18%	20%	26%	28%	26%	36%	30%	28%	34%	34%	30%	36%	34%	30%	40%

School Roll Forecast
Thurso High School
Halkirk Primary

5100623	2023/24	2024/25	2025/26	2026/27	2027/28	2028/29	2029/30	2030/31	2031/32	2032/33	2033/34	2034/35	2035/36	2036/37	2037/38	2038/39
P 1	12	14	11	9	11	10	12	13	12	12	12	13	12	12	12	13
P 2	10	12	14	11	9	11	11	12	12	12	13	12	12	13	12	12
P 3	17	10	12	14	11	9	11	11	12	12	13	12	13	12	12	13
P 4	18	17	10	12	14	11	10	10	11	12	13	12	13	13	12	13
P 5	3	18	17	10	12	14	12	9	11	10	13	12	13	13	12	13
P 6	13	3	18	17	10	12	14	12	9	11	11	12	13	13	12	13
P 7	8	13	3	18	17	10	12	14	12	9	11	11	13	13	12	13
Total Roll	81	87	85	91	84	77	82	81	79	78	86	84	89	89	84	90
Total Capacity	188	188	188	188	188	188	188	188	188	188	188	188	188	188	188	188
Tot Roll - Tot Cap	-107	-101	-103	-97	-104	-111	-106	-107	-109	-110	-102	-104	-99	-99	-104	-98
Tot Roll/Tot Cap %	43%	46%	45%	48%	45%	41%	44%	43%	42%	41%	46%	45%	47%	47%	45%	48%

School Roll Forecast
Thurso High School
Miller Academy Primary

5101328	2023/24	2024/25	2025/26	2026/27	2027/28	2028/29	2029/30	2030/31	2031/32	2032/33	2033/34	2034/35	2035/36	2036/37	2037/38	2038/39
P 1	53	33	36	34	34	34	35	35	35	34	34	35	34	34	33	34
P 2	39	53	33	36	34	34	34	35	35	35	34	35	34	35	34	34
P 3	28	39	53	33	36	33	35	34	35	35	35	34	35	34	35	34
P 4	40	28	39	52	34	35	34	34	34	35	36	35	35	35	34	35
P 5	30	40	28	39	52	33	36	33	34	34	36	35	35	35	35	35
P 6	41	30	40	28	38	53	33	35	34	34	34	35	36	35	35	35
P 7	48	41	30	40	27	39	52	33	36	33	34	34	35	36	35	36
Total Roll	279	264	259	262	255	261	259	239	243	240	243	243	244	244	241	243
Total Capacity	330	330	330	330	330	330	330	330	330	330	330	330	330	330	330	330
Tot Roll - Tot Cap	-51	-66	-71	-68	-75	-69	-71	-91	-87	-90	-87	-87	-86	-86	-89	-87
Tot Roll/Tot Cap %	85%	80%	78%	79%	77%	79%	78%	72%	74%	73%	74%	74%	74%	74%	73%	74%

School Roll Forecast
Thurso High School
Mount Pleasant Primary

5101425	2023/24	2024/25	2025/26	2026/27	2027/28	2028/29	2029/30	2030/31	2031/32	2032/33	2033/34	2034/35	2035/36	2036/37	2037/38	2038/39
P 1	20	23	21	20	25	21	20	20	20	20	20	20	19	20	19	20
P 2	30	20	23	21	20	25	21	20	20	20	20	20	20	20	20	19
P 3	28	30	20	23	21	20	25	21	20	20	20	21	20	19	20	20
P 4	22	28	30	20	23	21	20	24	22	20	21	20	20	20	20	20
P 5	33	22	28	30	20	23	21	20	24	22	20	20	21	20	20	20
P 6	27	33	22	28	30	20	23	21	20	24	21	21	20	21	20	20
P 7	25	27	33	22	28	30	20	23	20	21	24	21	21	20	21	20
Total Roll	185	183	177	164	167	160	150	149	146	147	146	143	141	140	140	139
Total Capacity	243	243	243	243	243	243	243	243	243	243	243	243	243	243	243	243
Tot Roll - Tot Cap	-58	-60	-66	-79	-76	-83	-93	-94	-97	-96	-97	-100	-102	-103	-103	-104
Tot Roll/Tot Cap %	76%	75%	73%	67%	69%	66%	62%	61%	60%	60%	60%	59%	58%	58%	58%	57%

School Roll Forecast
Thurso High School
Pennyland Primary

5101026	2023/24	2024/25	2025/26	2026/27	2027/28	2028/29	2029/30	2030/31	2031/32	2032/33	2033/34	2034/35	2035/36	2036/37	2037/38	2038/39
P 1	13	19	18	14	19	17	17	17	17	17	17	17	17	17	16	17
P 2	20	13	19	18	14	19	16	18	17	17	17	17	17	17	17	17
P 3	38	20	13	19	18	13	19	17	17	18	17	17	17	17	17	17
P 4	18	38	20	13	19	17	14	19	17	17	18	17	17	17	18	17
P 5	30	18	38	20	13	18	18	14	19	16	18	17	18	17	17	17
P 6	30	30	18	38	19	13	19	18	13	19	17	17	18	17	17	18
P 7	32	30	30	18	37	20	13	19	17	14	19	16	17	18	17	18
Total Roll	181	168	156	140	139	117	116	122	117	118	123	118	121	120	119	121
Total Capacity	278	278	278	278	278	278	278	278	278	278	278	278	278	278	278	278
Tot Roll - Tot Cap	-97	-110	-122	-138	-139	-161	-162	-156	-161	-160	-155	-160	-157	-158	-159	-157
Tot Roll/Tot Cap %	65%	60%	56%	50%	50%	42%	42%	44%	42%	42%	44%	42%	44%	43%	43%	44%

School Roll Forecast
Thurso High School
Reay Primary

5101123	2023/24	2024/25	2025/26	2026/27	2027/28	2028/29	2029/30	2030/31	2031/32	2032/33	2033/34	2034/35	2035/36	2036/37	2037/38	2038/39
P 1	5	4	5	4	8	6	4	5	4	4	4	4	5	4	4	4
P 2	4	5	4	5	4	8	6	4	5	4	4	4	5	4	4	4
P 3	6	4	5	4	5	4	8	6	4	5	4	4	5	4	4	4
P 4	8	6	4	5	5	4	4	9	5	5	4	4	5	4	4	5
P 5	5	8	6	4	5	5	5	4	8	5	5	4	5	4	4	5
P 6	3	5	8	6	4	5	5	5	4	8	6	4	4	5	4	5
P 7	5	3	5	8	6	4	5	5	5	4	8	6	4	5	4	5
Total Roll	36	35	37	36	37	36	37	38	35	35	35	30	33	30	28	32
Total Capacity	75	75	75	75	75	75	75	75	75	75	75	75	75	75	75	75
Tot Roll - Tot Cap	-39	-40	-38	-39	-38	-39	-38	-37	-40	-40	-40	-45	-42	-45	-47	-43
Tot Roll/Tot Cap %	48%	47%	49%	48%	49%	48%	49%	51%	47%	47%	47%	40%	44%	40%	37%	43%