

Agenda Item	7
Report No	HCW/10/25

The Highland Council

Committee: Health Social Care and Wellbeing

Date: 28 May 2025

Report Title: Integrated Children's Services Annual Report

Report By: The Assistant Chief Executive – People

1 Purpose/Executive Summary

- 1.1 This report provides an update on the progress being made to deliver the outcomes outlined within the Children's Services Planning Partnerships Integrated Children's Services Plan 2023 – 2026 [here](#). The integrated plan is a Community Planning Partnership plan developed by the Highland Integrated Children's Services Planning Board which reports to the Community Planning Partnership Board.
- 1.2 The report also provides an update on the Integrated Children's Services Boards performance management framework.

2 Recommendations

- 2.1 Members are asked to:
 - i. Note and comment on the ICSB annual report which shares the work undertaken by the children's services planning partnership 2024/25 in delivering the Highland Integrated Children's Services Plan 2023/2026.
 - ii. Note the work of the delivery groups.

3 Implications

- 3.1 **Resource** - The children's services planning partnership will help determine future resource needs and priorities for improvement. Further resource implications may be identified within the duration of the plan (2023 - 2026)
- 3.2 **Legal** - There is a statutory requirement for partnerships to produce an Integrated Children's Service plan every three years as outlined at 4.1 of this report. The plan is underpinned by meeting the requirements of the United Nations Convention on the Rights of the Child.
- 3.3 **Risk** - This iteration of the ICS plan is delivered through the Community planning partnership infrastructure and is / will be aligned to the aspirations of the Highland outcome improvement plan

3.4 Health and Safety (risks arising from changes to plant, equipment, process, or people)
- None

3.5 Gaelic - None

4 Impacts

4.1 In Highland, all policies, strategies or service changes are subject to an integrated screening for impact for Equalities, Poverty and Human Rights, Children's Rights and Wellbeing, Climate Change, Islands and Mainland Rural Communities, and Data Protection. Where identified as required, a full impact assessment will be undertaken.

4.2 Considering impacts is a core part of the decision-making process and needs to inform the decision-making process. When taking any decision, Members must give due regard to the findings of any assessment.

4.3 This is a monitoring and update report and therefore an impact assessment is not required.

5 Integrated Children's Services planning

5.1 In February 2014 the Scottish Government passed the Children and Young People (Scotland) Bill. The Bill places duties on public bodies to coordinate the planning, design and delivery of services for children and young people with a focus on improving wellbeing outcomes, and report collectively on how they are improving those outcomes.

5.2 This legislation requires each partnership to produce a plan every three years and to provide an annual update every year. The annual update at **Appendix 1** to this report is in draft pending final sign off by the Community Planning partnership on 6 June 2025.

5.3 In December 2019, Scottish Government wrote to each of the strategic leads for Integrated children's services planning issuing new guidance to support the development of ICS plans across Scotland. This guidance determined that children's services plans should be embedded within Community Planning Partnerships. This guidance also provided the structure and framework for our 2023 - 2026 plan.

5.4 The Highland Community Planning Partnership brings together public agencies, third sector organisations and other key community groups to work collaboratively with the people of Highland to deliver better outcomes.

5.5 The Highland Community Planning Partnership works strategically at a Highland level, through a series of nine geographical local Community Partnerships as well as regional thematic groups. Ultimately these deliver our Local Outcome Improvement Plan.

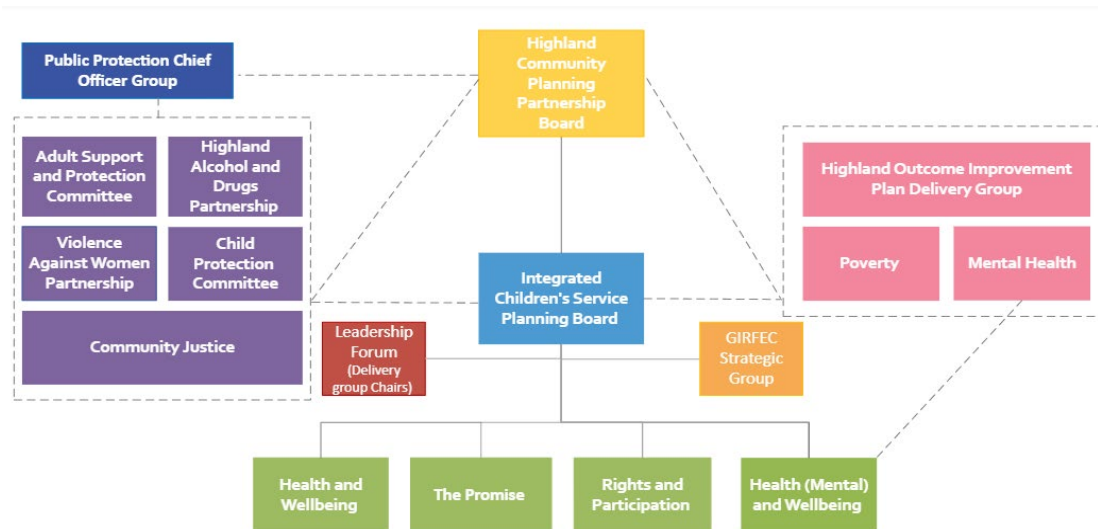
5.6 Highland Children's Service Plan sits within a context of the Community Planning Partnership and the Integrated Children's Service Planning Board, strategically leads the improvement of outcomes for all Highland's Children and Families.

5.7 This Plan has been developed in collaboration with public sector bodies and third sector organisations and is informed by both the voice and testimony of children, young people and families and the needs of our communities as articulated through our Joint Strategic Needs Assessment (2023).

- 5.8 This Plan articulates how partners work together to provide services which are organised, equipped to deliver high quality, joined up, trauma informed, responsive and preventative support to children and families.

6 Integrated Children Services Planning Board

- 6.1 The Integrated Children's Service's work continues as it enters the 3rd year of the delivery of the Integrated Children's Service Plan. The report highlights the continued progress that has been made in 2024/25. The work of the board has continued to be strengthened through the delivery groups and strong partnership across services and in all sectors



7 Integrated Children's Service's Annual Report 2024/25

- 7.1 This annual report details the significant work that has continued into the 2nd year of the Integrated Children's Service's Plan, undertaken by the delivery groups in progressing the priorities and change ideas.
- 7.2 The Plan articulates how partners work together to provide services which are organised, equipped to deliver high-quality, joined-up, trauma-informed, responsive and preventative support to children and families
- 7.3 Embedded within the annual report are documents and resources which provide further detail in the work of delivery groups.
- Child Poverty Report 2023-2024
 - Child Protection Committee Biennial Report
 - Highland Promise Plan – 2025-2028
 - Children and Young People Participation Strategy
 - Rights and Participation Website
- 7.4 Whilst the delivery groups have a focus on their thematic area, there are cross cutting themes and workstreams across delivery groups. This is reflected on the delivery group membership to strengthen the joined up working across the partnership.
- 7.5 A new subgroup of the ICSB was identified following the GIRFEC (Getting It Right For Every Child) refresh and reset sessions. The multi-agency GIRFEC Strategic group was established to have oversight of GIRFEC arrangements to support a joined-up whole system approach. This group has begun to focus on continuous improvement and implementation of action plans, continue to ensure consistency of

the GIRFEC framework and the shared language for promoting, supporting, and safeguarding the wellbeing of children and young people, ensuring the right support is provided as early as possible.

- 7.6 The Integrated Children Board have participated in several development days to strengthen the partnership and inform the ongoing work of the board through collaboration and collective planning. The development days have included – Trauma Informed Systems, Child Protection Development Day, Whole Family Wellbeing, The Promise Special Meeting plan 24-30.

8 Performance Management Framework

- 8.1 The Integrated Children's Service Planning Board has responsibility for monitoring progress towards achieving the outcomes outlined within the Integrated Children's Services Plan and utilises our Performance Framework to achieve this.
- 8.2 Partners work together and take responsibility for co-ordinating performance reporting on a regular basis. In addition, we are committed to continuous improvement methods through listening to the voices of children, young people and their families, learning from self-evaluation, analysing intelligence and scrutinising an agreed set of qualitative and quantitative improvement measures. Our performance management measures are attached at **Appendix 2** of this report.

9 Vision 26

- 9.1 Following the successful delivery of Vision 26 in August 2023 and 2024 to celebrate the work of the Integrated Children's Service Board, we have begun planning for our 2025 event.
- 9.2 The aim for this year's event is to include more children and families. The event will focus on a family fun day at Eden Court on Monday 11th August 10.00am-1.00pm and will take a similar approach to the 'Brighter Beginnings' event organised through the Inverness Family Centre in March this year which attracted almost 500 children under 5. This event will be open to all children and families (12 years and under) The event will still welcome organisation and practitioners but with an ask that an activity will be provided for the children and families attending.

Designation: The Assistant Chief Executive – People

Date: May 2025

Author: Ian Kyle, Chair, Integrated Children's Services Planning

Background Papers: None

Appendices: Appendix 1 – ICSB Annual Report 2024/25
Appendix 2 – ICSB Performance Management Framework

Highland Integrated Children's Service Plan 2023–2026

Annual Report 2024/25





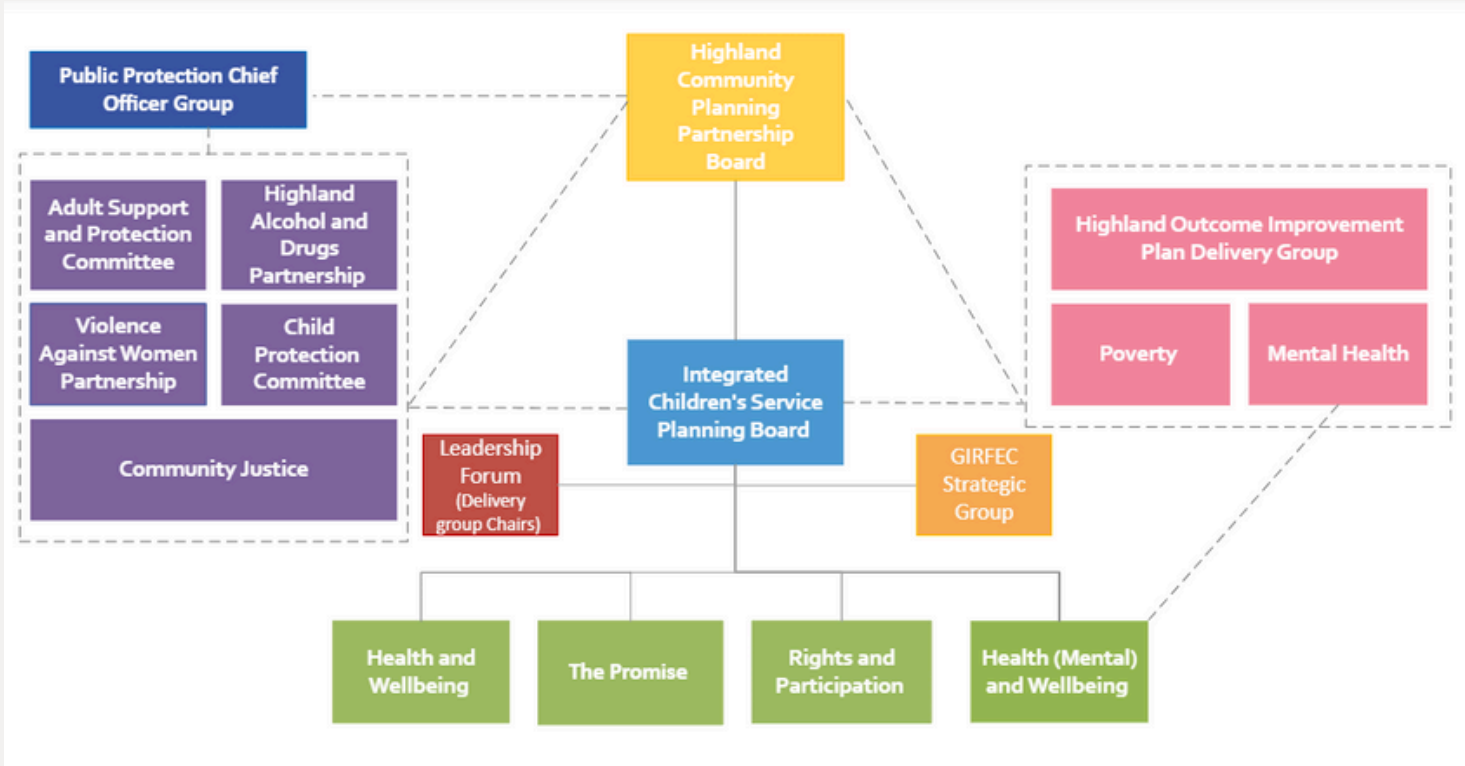
Integrated Children's Service Board



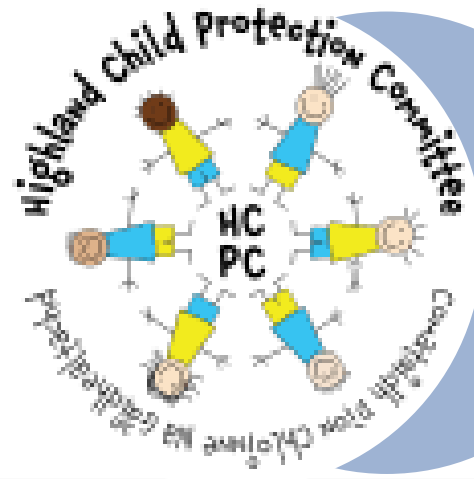
Highland Children's Service Plan sits within a context of the Community Planning Partnership and the Integrated Children's Service Planning Board, strategically leads the improvement of outcomes for all Highland's Children and Families.

The Plan articulates how partners work together to provide services which are organised, equipped to deliver high-quality, joined-up, trauma-informed, responsive and preventative support to children and families. [Find full plan here](#)

The annual report represents the work undertaken during 2024/25 and outcomes achieved in the delivery of the integrated children's service plan 2023-2026. The change ideas and priorities are implemented through each of the delivery groups.



DELIVERY GROUPS



The Child Protection Committee



The Promise Board



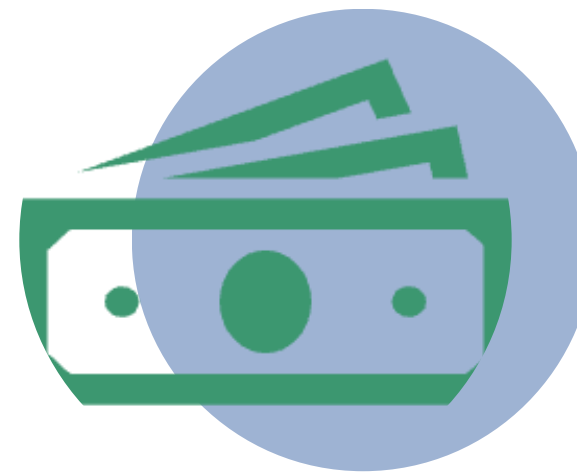
Health and Wellbeing



Drugs and Alcohol



Rights and Participation



Poverty Reduction



**Health and Wellbeing
(Mental Health)**

The delivery groups are partnership groups made up of statutory and 3rd Sector representatives. The groups take a life course approach to their improvement work of the Integrated Children's Service Plan

VISION 26

Another successful Vision event was held with over 200 attendees and 60 local organisations showcasing the work to support children, young people and families in Highland and the contributions to the Children's service plan. Vision 26 launched the Children and Young People Participation Strategy and the child friendly version of the Integrated Children's Service Plan. Celebrating the incorporation of UNCRC into Scots Law,



CHILDREN'S RIGHTS AND PARTICIPATION WEBSITE

USERS

478

VIEWS

2000

CLICKS

6300

KEY HIGHLIGHTS



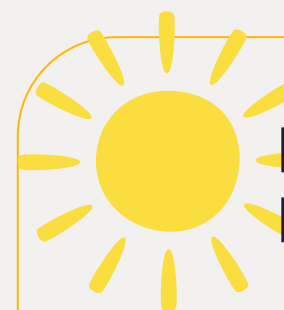
WORRIED ABOUT MONEY APP -
2300 VIEWS AND 213 USERS



100'000
Free Period
packs/ products
distributed
across Highland

1000 Views
of the Vaping
Information
Booklet

Integrated Children
Service Board engaged
in **4** development days
to focus in on
workstreams of
Trauma Informed
Practice
The Promise 24-30
Child Protection
Whole Family Wellbeing



BRIGHTER BEGINNINGS: WHY EARLY YEARS MATTER'S

Early years event Brighter Beginnings hosted by Inverness Family Centre and supported by Highland CPC was held at Eden Court on 3rd March 25. Over 500 Families and Children under 5 were welcomed along to meet services and enjoy the activities. Celebrating the importance of the Infant Pledge and working alongside families to give our youngest children the best possible start in life. The event welcomed key note speaker Dan Wuori. [More details on event here](#)

Getting it Right for Every Child (GIRFEC)

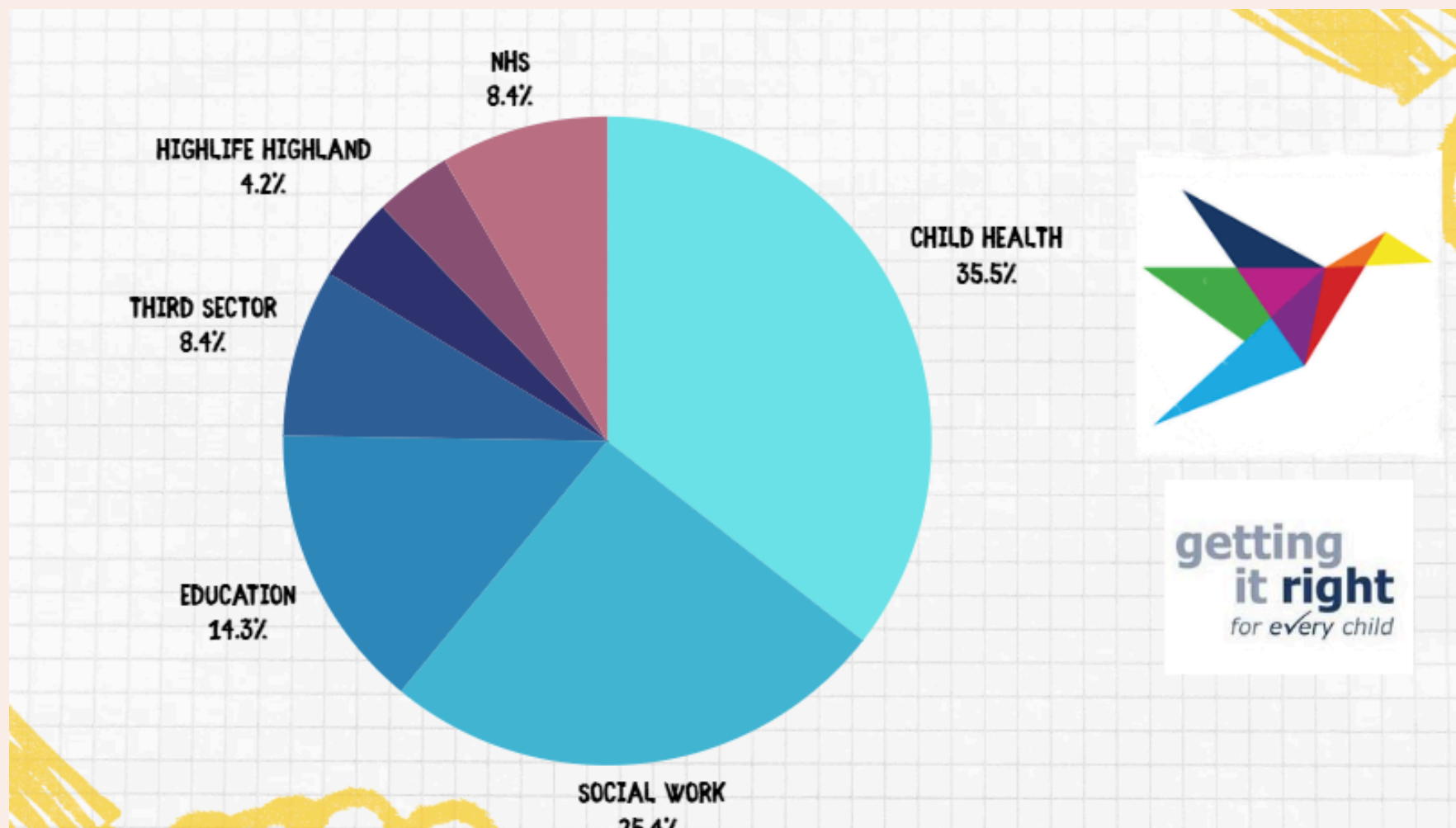
A renewed focus was developed following the updated National GIRFEC Guidance and Highland launched the GIRFEC refresh and reset, lead by The Integrated Children's Service (ICS) Board with facilitators provided across the partnership including CALA, Child Protection Committee and The Whole Family wellbeing team. This began with planned face to face sessions Highland wide. During these sessions we held discussions in relation to the eLearning module, Child's Plan, Chronologies and Implementation of the refreshed guidance. We received a wealth of feedback across the services.

Delivery consisted of 9 'in person' sessions

Overall, 284 attendees. The workshops were held in 7 locations between March and June 2024:

An improvement plan was developed based on the feedback from practitioners

Highland GIRFEC elearning module was developed and so far been completed by 294 practitioners



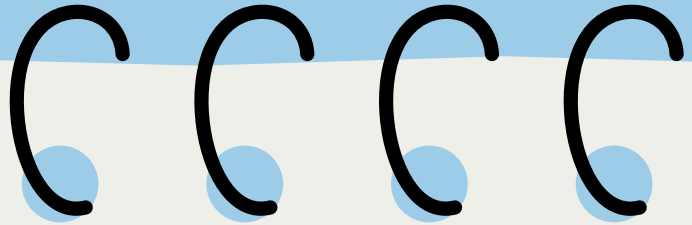
Following the feedback from refresh and reset sessions the multi agency GIRFEC Strategic Group has formed to take forward the improvement plan, this is underway and includes;

- Review of the Child's Plan (started Nov 24)
- Development of Practice Guides for Childs Plans, Additonal Support needs and Chronologies.
- GIRFEC Multiagency Training

Whole Family Wellbeing Programme

The Whole Family Wellbeing team have been undertaking significant work across Highland working towards the programme’s aim to provide holistic whole family support, readily available across Highland to families that need it, when they need it for as long as they need it. Working with local organisations, assessing local need and funding activity inline with the programmes funding strategy, whilst taking a whole system approach to delivery of services provided to support children and families.

Inverness High School ASG Test of Concept. Partnership working with CALA, Thriving Families and Home-Start East Highland working as an alliance to provide Holistic Whole Family Support through the Family Links Project within the Inverness High School ASG area. This is now reaching a 6 month evaluation of the project.



Self-Assessment Toolkit

The WFWP Self-Assessment Toolkit was launched and completed by wide range of 3rd Sector organisations, there is now a further requirement to disseminate the WFWP Self-Assessment Toolkit through our statutory services in Highland. This will allow for a whole system approach to quality assurance across services both in statutory and third sector, who provide support to families.

[Can be found here](#)

CHILDREN AND FAMILIES
AT THE CENTRE

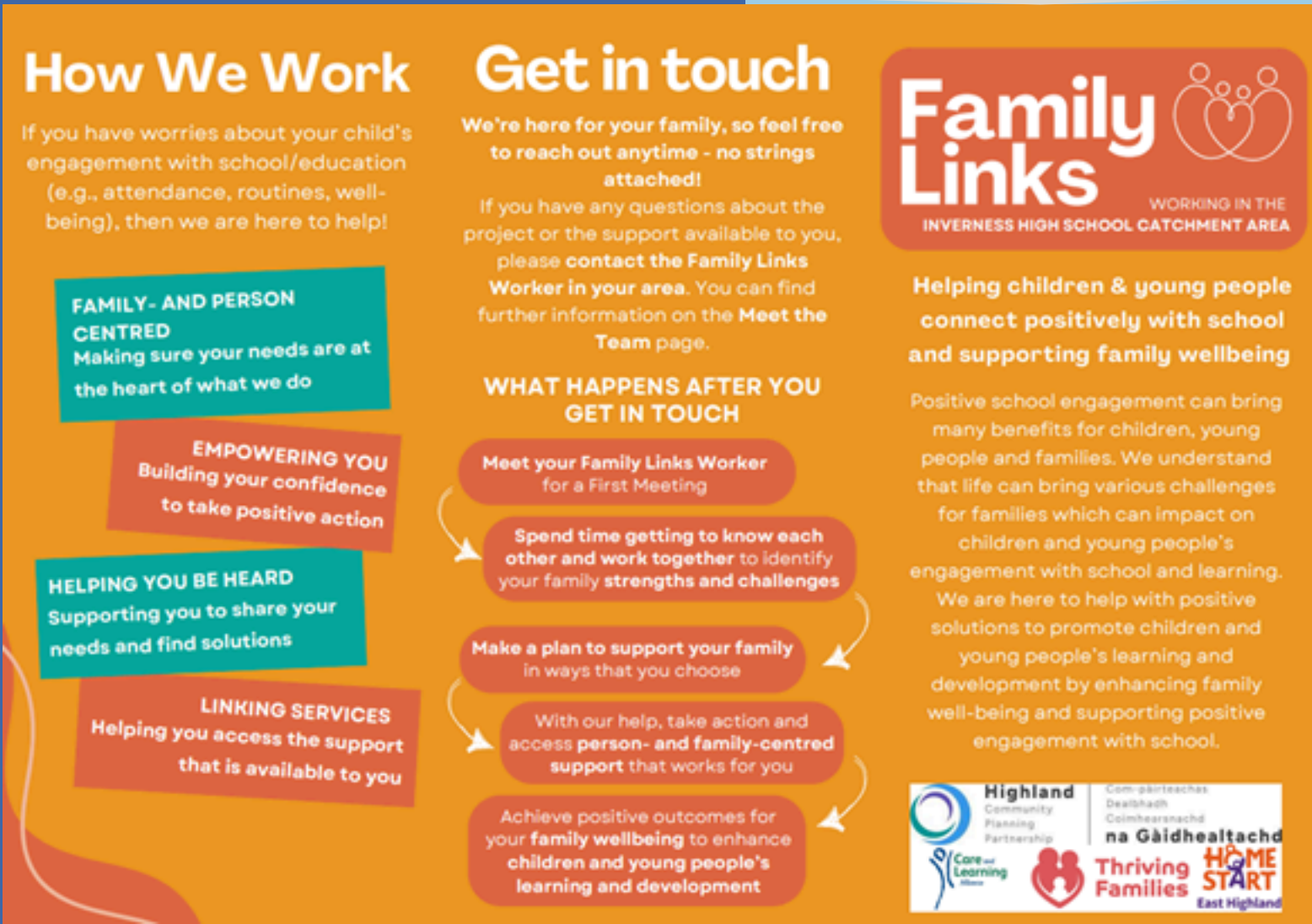
AVAILABILITY
AND
ACCESS

WFWB -
News
Round up
distributed
to over
800
people
monthly.

Detailing
locality
and
highland
family
support
activity

WHOLE SYSTEM
APPROACH / JOINED UP
SUPPORT

LEADERSHIP
WORKFORCE
CULTURE



Whole Family Wellbeing Funding Strategy

The WFWB Funding strategy was developed to define the approach, application/allocation process and governance of the Whole Family Wellbeing fund, to services who are providing Holistic Whole Family Wellbeing Support across Highland. Funding Strategy

Element 1 Funding

Element 1: Locality Community Based Activity Small Grant Fund (>£10K)

To date a total of 34 applications were received from Third Sector Organisations, with 30 of those being successful.

A total of £286,583.64 has been released so far to the 30 successful Projects across Community Partnership areas



Element 2 Funding

£1,257,308.00

Funding was awarded for element 2 tests of concept to improve the reach of Holistic Whole Family Support across various thematic work streams, covering a broad range of support services meeting family needs in Highland.

Poverty

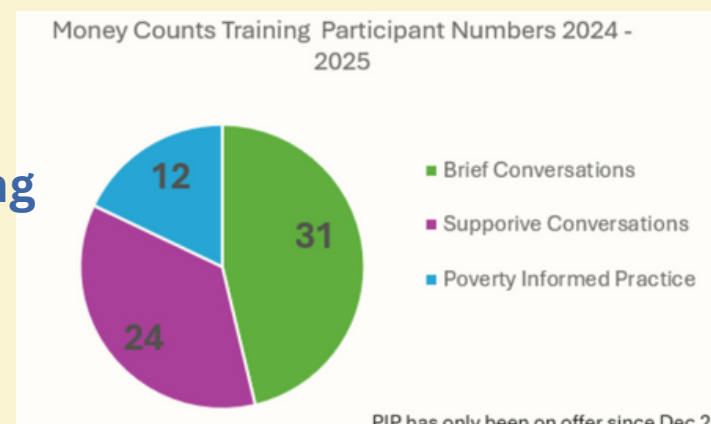
Money Counts Training delivered since April 24.

5x Brief Conversations,

4x Supportive Conversations Training and

2x Poverty Informed Practice Training

This continues to be offered as a means of increasing the number and quality of conversations around money worries. The training highlights the **Worrying About Money? Leaflet** and app as tools to support individuals access a range of appropriate support services and organisations.



Local Child Poverty Action
Update Report produced
and published

[Find worrying about money leaflet here](#)

2024 has seen further delivery of projects across the Highlands and sessions to boost numeracy confidence in everyday life ranging from outdoor family fun days to weekly activities within highlife libraries for families to explore everyday numeracy through games, crafts and play. With the introduction of additional evening classes to achieve maths qualifications and the development of digital tools to support learning.

Lead Officer for Period Products attended various events across the summer in conjunction with the Welfare Support Team. Events attended included **Belladrum Music Festival**, Inverness Highland Games, Pop up shops in Eastgate Centre, **Vision 26** at Inverness Leisure Centre with over **100'000** packs of free period products distributed across Highland

Caithness Parental Employability Pilot

The aim of the project is to develop and deliver a 6-week, 2 days-a-week pilot place-based offer in Wick that is targeted at helping approximately 8 unemployed parents overcome some of the barriers they face to securing fair and sustainable employment in the local area. This in turn has the potential to reduce levels of child poverty in the area and help employers secure the staff they need. This will be rolled out wider across Highland following successful evaluation of the pilot

Development of Flexible Models of Childcare in Rural Areas

- New models piloted. A more sustainable delivery model in place, including a shift in the balance of Early Learning and Childcare delivery between Local Authority and Private providers.
- Successful Alcohol and Drug Partnership funding bid focused on new models of delivering rural childcare
- ADAP funding to engage rural consultant to support CALA in development of the integrated Single Care Model (SCM) pathway pilot and working group has met and continues to develop model
- Partners include CALA, HIE, Highland Council, NHS Highland, Care Inspectorate and 3rd/private providers.
- Challenges of rural delivery of childcare been highlighted to Minister for Children and Young People as well as MSPs to gain support to allow flexibility in models.
- Close partnership working on new models for childminding

Child Protection

GIRFEC and Child Protection Procedures were launched in December 2024. These joint procedures were brought together to reinforce the importance of the continuum of care, support and protection. An APP has been developed for easy access to the guidance.

GIRFEC and CP Procedures plus APP

In 2024/25 CPC and partners delivered training to **3632** people

492
downloads
of the
GIRFEC and
Child
Protection
Procedures
APP

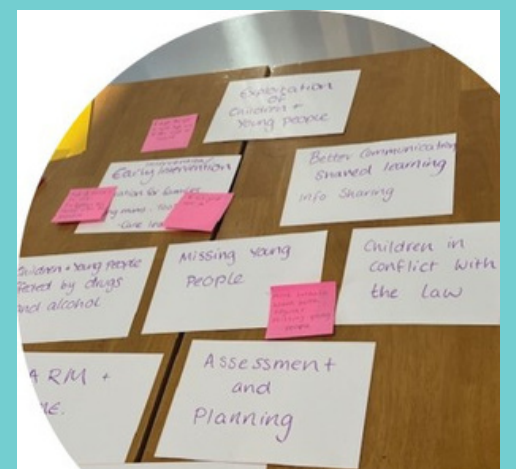
Highland Child Protection Committee
Biennial report
has been produced and published

To provide support for older young people in Highland, we have continued to work in partnership with Police Scotland, Action for Children, Aberlour and Barnardos to deliver specialist services for young people at risk of exploitation, including delivery of an outreach service through The Anchor Project. We have also worked with the CYCJ, Youth Action Team and our partners in the Highland Alliance to develop an Older Young People Action Plan to support young people at risk of community harm and those involved with justice services.

The Vulnerable Pregnancy Pathway has been reviewed and relaunched as Women, Pregnancy and Additional Support Needs guidance. Led by our Midwifery Development Officers, this activity forms part of the CPC 'Starting Out' Action Plan to work together and make sure families are at the heart of all our assessment and planning processes. The voice of our youngest children is a key priority and on 3rd March 2025 we relaunched our Consulting with our youngest children toolkit developed in partnership with the Care and Learning Alliance. All resources can be found at www.hcpc.scot.

The Scottish Child Interview Model (SCIM) aims to support children who have experienced abuse or harm, making sure they are interviewed in a trauma informed way, and receive ongoing support through Bairns' Hoose standards. Funded by the Scottish Government, we have been working to create warm and welcoming spaces for children, families and services to work together and support recovery. We have now recruited a Bairns Hoose Manager and a full-time SCIM team to take this work forward. Further information on Bairns Hoose and SCIM is available at www.hcpc.scot/resources.

The launch of Scottish Child Interview Model and Bairns Hoose took place in May 2024.



Highland welcomed Graeme Armstrong (author of the bestselling novel The Young Team and presenter of the BBC documentary series Street Gangs). This unique opportunity allowed staff and practitioners working with young people in the Highlands to gain valuable insights into gang culture, youth violence, and the power of connection and healing

The Promise



Highland Promise Plan 2025–2028

Highland 's first Promise Plan was developed and is built on the voices and experiences of care experienced children and young people through a broad range of engagement and participation activities across Highland and developed as a collaborative Promise Board Plan

[Find the Highland Promise Plan here](#)

Family Group Decision Making

Referrals to Family Group Decision Making for 135 children from 92 families.

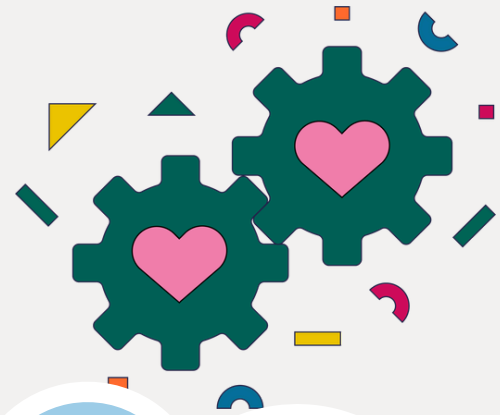
67% of referrals relate to children and young people who are on the edge of care,

21% relate to children and young people who are Looked After Away from Home

12% are for young people transitioning from care.

This included supporting families to create, review a family plan. Families that did not want to create a family plan, worked with coordinators to make commitments to what they would provide for the child or caregivers.

- Trauma Summit held with senior leaders across partnerships in Sept 2024, supported by MSPs, Scottish Government and Improvement Service
- Development session on Trauma Informed Systems held , in line with Road Map and Self Assessment tool (Jan 2025) Actions identified from the meeting are being take forward.



Children's Rights and Participation Service

Children's Rights and Participation service recruited 3 Child Rights and Participation Officers.

Their role is to support the council's commitment to 'Keeping The Promise' and actively listening to children and young people about decisions that affect their lives

Highland now have

28

Promise Ambassadors

Has Answers APP

HasAnswers developed by the Calman Trust, is designed to equip young people to manage the challenges they may encounter as they move towards independent living. **214** Individuals have registered. Advice most frequently accessed is

- Help to find or keep a job (50)
- Money related information/advice (28)
- Ways to save money (19)
- Cooking for yourself (19)
- Things that cause worry (mental health) (14)
- Recipes (14)

Direct help from the HasAnswers team is available for further support.



Rights and Participation

Children’s Rights and Participation website was developed and launched. This includes The Library of Voices is live and there are already examples of consultations uploaded.

Users
478

Views
2000

Clicks
6300

Trainee training for understanding of UNCRC and Impact assessments went live **97 staff have accessed and completed these**


Children’s Rights and Wellbeing Impact Assessments have now been undertaken for **149** strategic developments and actions across Highland Council.

Children and Young People Participation Strategy

Development was led by Inspiring Young Voices and was designed ensuring the meaningful and equitable participation of children and young people at the heart of the process. With input gathered from almost 800 children and young people from across Highland. Implementation is now underway with focus on training, support and Voice



**Highland**
Community Planning Partnership

Com-pàirteachas Dealbhadh Coimhearsnachd na Gàidhealtachd



Highland Children and Young People’s Participation Strategy
2024 - 2029

“Together we can all make change”

Health and wellbeing (Mental Health)



Community Based Supports

An interactive session was led by colleagues from Public Health to explore how we align to the Framework's four outcomes around community-based supports and services Scottish Government CYP Community Mental Health and Wellbeing Supports and Services Framework, : which will enhance the work of the delivery group

A collective focus on Pathways has been agreed and in development for young people to gain a better understanding across the system and so any gaps can be identified.

Outcome 1: Wellbeing

Children, young people and their families have improved mental health and wellbeing.

Outcome 2: Early guidance and support

Children, young people and their families can access guidance and support at an early stage, when and where they need it.

Outcome 3: Clearer pathways

Children, young people and their families receive the help they need, and pathways to supports and services are clearly communicated.

Outcome 4: Whole-system approach

Supports and services are part of a whole system where key partners work together to improve the mental health and wellbeing of children, young people and their families, all of whom are integral to the co-design of supports and services.

Mental Health and Wellbeing delivery group held a development day held to map Highland Services across the continuum of need using the THRIVE Framework

CYP Community Mental Health and Wellbeing fund been introduced to the Integrated Children Services Board and encouragement has been made for better use of partnership funding by working together. Aligned to the WFWP Funding Strategy and enabling a joined-up approach for improvements to community-based supports and services across Highland

Drugs and Alcohol



Planet Youth- 5 Local Action Groups have agreed 3 clear goals, focused on reducing risk factors and strengthening protective factors for substance use initiation, and improving overall mental and physical health outcomes.

Increased provision of activities for young people via Highlife Highland, with estimated 645 young people involved in specific Planet Youth activities since July 24



Vaping booklet has been produced by NHS Health Improvement Team with over +1000 views, with positive feedback.

Webinar delivered with Safe, Strong and Free with a focus on bullying, coincided with anti-bullying week, and was available online

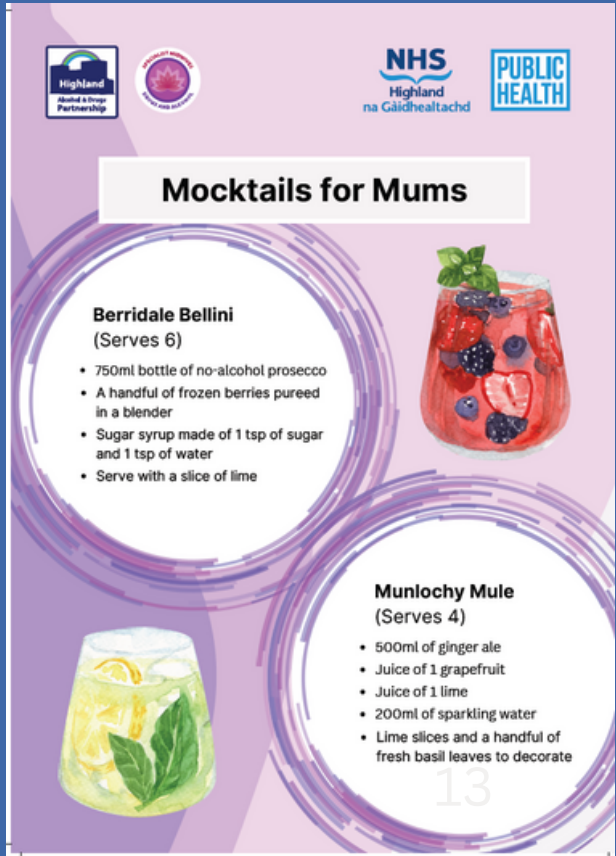


Midwifery Packs

Packs have been made up with nice re-usable bags to have available for women – 2 small, 2 medium and 2 large. Maternity department store one of each size, these are to help reduce stigma and respect everyone's right to dignity. Each bag contains a dressing gown, pyjamas, slippers, 2 pairs of socks, 4 pairs of pants, a water bottle, wash bags include a wide range of toiletries for Mum. .

Mocktails for Mums

As part of ongoing efforts to raise awareness about Fetal Alcohol Spectrum Disorders (FASD), specialist midwives served alcohol-free "mocktails for mums" at several events, all thanks to funding from HADP. Our mocktails provided an opportunity to actively engage in conversations about the impact of alcohol during pregnancy with both staff and members of the public - including young children who enjoyed pouring themselves a cup! We were then able to offer evidence-based information and advice for safe and healthy pregnancies with our printed recipe cards. We were delighted to receive positive feedback about the taste of the mocktails from those who engaged with us.



Feedback

What Practitioners, Children and Young people and families tell us

“
Vaping information pack
was useful to understand
why young people vape
and how to help them
avoid starting
”

- Active Schools

Planet Youth provided information
that was specific to our school,
which highlighted areas to work on
Parent - School Parent Council

It was busy and
highlighted just how much
we have going on for
young people in Highland.
It was a great chance to
network -
Organisation Rep Vision 26.

Ensure my voice is
heard
Young person,
Feedback about
Childs Plans

We are the next
generation so what
happens will affect
us in the future -
Young person - C&YP
Strategy

I very much love it when Family Links
Worker comes to see me on Fridays
because it makes me feel like more
people care about me
and it is very fun and I wish I could
go with her every day
p6 child Family Links Project

“I am thankful for my time with the Family
Links Worker. It was about my daughter’s
anxieties about going to school, but it is as
much for me as for my daughter. I was
needing reassurance, and our time together
put me at ease. Parent - Family Links Test of
Concept Project.

Excellent to have lots
of partner agencies
together to focus on
GIRFEC in practice.
Practitioner - GIRFEC
Refresh Session



Work Progressing into 2025/26

Development of Integrated Children's Service Plan
2026-2029 -Predicated on Children's Voice

GIRFEC FOCUS - Continued Implementation of Improvement
plan, delivery of training and completion of Childs plan
review

Whole Family Wellbeing Programme - Developing Holistic
Whole Family Support operating model for Highland

Children's Rights and Participation - Child Friendly Complaints Process in
Highland produced by children and young people and creation of a
guidance document to support practitioners understand what 'capacity'
means in relation to Child Friendly Complaints, but also more widely.

Highland Child Protection Committee are undertaking reviews
and work on neglect and CSA, based on data evidence.
Including development of a neglect toolkit of support.



The Promise Board and delivery groups will continue
implementation of Highland Promise Plan 2025-2028



Integrated children's services planning board Performance Management Framework 2023-2026



Data Overview -

Baseline Data – This was established between 2012-2016 to provide a longer-term measurement of progress

Education and Learning – Data from Lifestyle Survey collected every 2 years last completed in 2023

Health and Social Care & NHS - This data is collected quarterly

HSC – CP Minimum Dataset – This data is collected quarterly

HSC - Scottish Government Annual Return – Annually collected, usually ready by November each year

↑ ↓ → - Arrows indicate an increase or decrease in figure since last reporting, these are colour coded to denote movements are positive, negative or no movement. Some child protection figures are not colour coded as these cannot always be attributed to either positive or negative movements.

Indicator #1	TARGET	BASELINE	CURRENT	DATA SOURCE
Number of households with children in temporary accommodation will reduce.	160	200	↓130	Housing
ANALYSIS This data is collected quarterly. The baseline was established in 2015. This has reduced from 180 in the last year.				

Indicator #2 (NHS CYP14)	TARGET	BASELINE	CURRENT	DATA SOURCE
Percentage of children with one or more developmental concerns recorded at the 27–30-month to decrease	TBC	TBC	11%	Child Health
ANALYSIS The measure has changed from Percentage of children reaching their developmental milestones at their 27 – 30-month health review will increase. This is due to how the data is now collected, The target and baseline to be established.				

Percentage of children with one or more developmental concerns recorded at the 27-30 month review

Quarter of review	% of reviews	Pre-pandemic median
2019 Q1	14.5	13.0
2019 Q2	12.5	13.0
2019 Q3	13.0	13.0
2019 Q4	13.0	13.0
2020 Q1	13.0	13.0
2020 Q2	11.5	13.0
2020 Q3	15.0	13.0
2020 Q4	13.5	13.0
2021 Q1	14.0	13.0
2021 Q2	15.0	13.0
2021 Q3	16.0	13.0
2021 Q4	17.5	13.0
2022 Q1	15.5	13.0
2022 Q2	16.5	13.0
2022 Q3	17.0	13.0
2022 Q4	14.0	13.0
2023 Q1	17.0	13.0
2023 Q2	12.5	13.0
2023 Q3	12.0	13.0
2023 Q4	13.0	13.0
2024 Q1	13.0	13.0
2024 Q2	12.0	13.0
2024 Q3	11.0	13.0

Indicator #3 (NHS CYP16)	TARGET	BASELINE	CURRENT	DATA SOURCE
Percentage of children in P1 with their body mass index measured	95%	85%	↑ 97.8%	Child Health

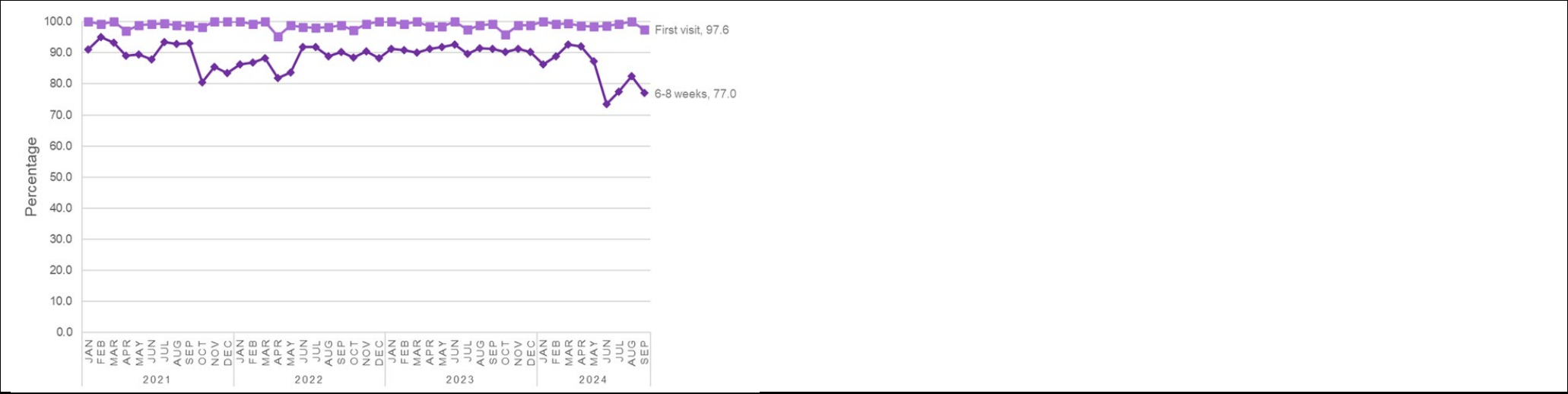
ANALYSIS

This data is reported Annually. Body Mass continues to be measures as part of the Child Health Surveillance Programme at the P1 Screening visit within School Nursing. Additional support, by way of follow up continues to be available through the Child Health Weight Programme. Full data can be found at <https://publichealthscotland.scot/publications/primary-1-body-mass-index-bmi-statistics-scotland/>

Indicator #4 (NHS CYP03)	TARGET	BASELINE	CURRENT	DATA SOURCE
Percentage uptake of 6–8-week Child Health Surveillance contact	95%	80%	↓ 78%	Child Health

ANALYSIS

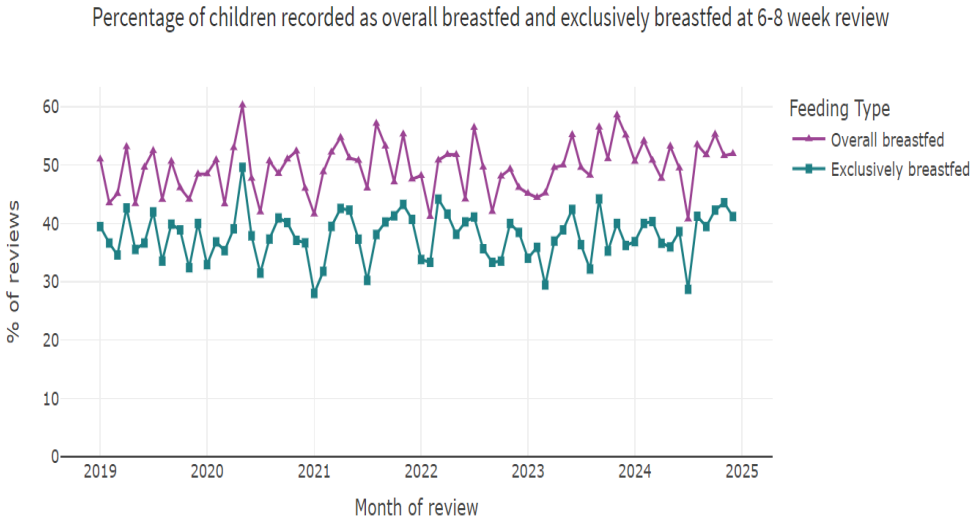
Target 95% been around 90% all year now at 78% which is an decrease.
At first review, coverage is consistently very high in the Highland HSCP.
The coverage of children eligible for review at 6-8 weeks was consistently high at around 90% between June 2022 and May 2024. More recent cohorts in the Highland HSCP appear to have not achieved this level of coverage.
The 6–8-week assessment is undertaken jointly by the child's health visitor and general practitioner. In some cases, the health visitor part of the review may have occurred, but the data has not been returned following the review in the general practice.
An audit of health visiting records for areas with low uptake in recent months will be carried out to establish if there have been systematic issues with returns from general practices.



Indicator #5 (NHS CYP06)	TARGET	BASELINE	CURRENT	DATA SOURCE
Achieve 36% of newborn babies exclusively breastfed at 6-8 week review	36%	30%	↑40%	Child Health
ANALYSIS				

There is a multi-disciplinary approach to supporting women to breastfeed in Highland and this includes midwives, health visitors, family nurses, infant feeding support workers, infant feeding coordinators, paediatric dietitians and community early years practitioners. Breastfeeding rates in Highland have increased over the past few years, resulting in fewer babies receiving only formula milk. Both midwifery and health visiting services have achieved sustainability status (GOLD award) from Unicef Baby Friendly Initiative resulting in a clear action plan to support leadership, culture, monitoring and progression of breastfeeding services within Highland. Infant feeding support workers will soon be tested as a concept in non-SIMD 1 areas, while Skye and Wester Ross has tested a concept where CEYP are upskilled to offer the level of support provided by IFSWs.

The Scottish Government has just finalised plans for the roll out of the Local Authority Breastfeeding Friendly Scheme which was tested in North Lanarkshire and there is an ask for Highland colleagues to participate in this along with the nursery and school friendly schemes. There has also been a national breastfeeding target which is monitored and reported to the Scottish Government from NHS Highland. This target aimed to reduce the attrition rate by 10% in any breastfeeding at 6 -8 weeks and NHS Highland has also made huge steps to achieving this target. The target is due to be renewed in 2026. This group would be encouraged to monitor and report on this target. For areas within SIMD 1 and where IFSWs have supported, attrition rates at 6 – 8 weeks have lowered from 44% in 2017/18 to 29% in 2024/25.



Indicator #6 (NHS CYP15)	TARGET	BASELINE	CURRENT	DATA SOURCE
Maintain 95% uptake rate of MMR1 (% of 5 year olds)	95%	95%	↓94%	NHS Highland
ANALYSIS				
Latest data from NHS slight reduction by 1%				
Full data can be found at https://publichealthscotland.scot/publications/childhood-immunisation-statistics-scotland/				

Indicator #7	TARGET	BASELINE	CURRENT	DATA SOURCE
Percentage of statutory health assessments completed within 4 weeks of becoming LAC will increase to 95%	95%	70%	↑59.7%	Health and Social Care
ANALYSIS The current LAC data for 24/25 is 59.7% completed within four weeks. This is an improvement from the 23/24 data of 56.5%. As part of delivering The Promise for Highland care experienced children and young people, there is currently a review of the health delivery model for CE CYP in Highland. Early improvements have already been put in place including the appointment of a Health Visitor (The Promise) in March 2025. This post will support early prevention and delivery of all statutory health assessments for infants under the age of 5 years, within the 4 week timescale. The recruitment to a Specialist Nurse (The Promise) School Years, to undertake a similar function for school age cyp, is underway. It is anticipated that as both posts move into operation, there will be a significant improvement in the timescales of delivery for the initial health assessment.				

Indicator #8 (NHS CYP24_A)	TARGET	BASELINE	CURRENT	DATA SOURCE
Percentage of children and young people referred to AHP Service PHYSIOTHERAPY, waiting less than 18 weeks from date referral received to census date (Interim Measure) - NOT 18RTT METHODOLOGY	90%	85%	↑78%	Health and Social Care
ANALYSIS The children's physiotherapy team have been fully staffed for a number of months which has seen progress towards our target for waiting times. The team have also remodelled their service delivery to maximise efficiency, including offering more clinics to reduce travel time for therapists. Along with all the children's therapy services, physiotherapy are seeing an ever-increasing demand.				

Indicator #9 (NHS CYP24_A)	TARGET	BASELINE	CURRENT	DATA SOURCE
Percentage of children and young people referred to AHP Service OCCUPATIONAL THERAPY, waiting less than 18 weeks from date referral received to census date (Interim Measure) - NOT 18RTT METHODOLOGY	90%	85%	↓ 54%	Health and Social Care

ANALYSIS				
The downward trend this quarter is due to sickness and vacancy within the team leading to longer waits for first appointment. Absence of any kind has a significant impact on capacity within a small team. An action plan is in place and all requests for assistance are triaged and prioritised. It should also be noted that all requests are contacted and receive a 'First Conversation' consultation and are provided with advice and suggestions for thing they can do while they wait. March 2025 data indicates improvement with 70% seen within 18 weeks and this will be reflected in the next report.				

Indicator #10 (NHS CYP24_A)	TARGET	BASELINE	CURRENT	DATA SOURCE
Percentage of children and young people referred to AHP Service DIETETICS, waiting less than 18 weeks from date referral received to census date (Interim Measure) - NOT 18RTT METHODOLOGY	90%	88%	↑ 84%	Health and Social Care
ANALYSIS				
There is an upward trend in Dietetics towards the target due to the team currently being fully staffed since August 2023. Dietetics use Near Me to ensure responsive care for their patients and families. In December 2023 a support practitioner joined the team, funded with waiting times money (0.4wte). This additionality has resulted in continuing progress towards our target.				

Indicator #11 (NHS CYP24_A)	TARGET	BASELINE	CURRENT	DATA SOURCE
Percentage of children and young people referred to AHP Service SPEECH & LANGUAGE THERAPY, waiting less than 18 weeks from date referral received to census date (Interim Measure) - NOT 18RTT METHODOLOGY	90%		↑ 87%	Health and Social Care
ANALYSIS				
The upward trend in response to this indicator is due to service redesign and the team are to be congratulated on their efforts.				

Indicator #12 (NHS CYP24_A)	TARGET	BASELINE	CURRENT	DATA SOURCE
Percentage of children and young people referred to AHP Services (ALL above), waiting less than 18 weeks from date referral received to census date (Interim Measure) - NOT 18RTT METHODOLOGY	90%	80%	↑ 79%	Health and Social Care

ANALYSIS
Across the allied health professional teams progress is being made towards our target of 90% of requests being seen. March 2025 data currently reports this as sitting at 81% which will be reported on next quarter. Nationally, no other IJB/NHS Board collates/reports on paediatric AHP waiting times, rather they focus on either “response”, “experiential” or “outcomes” to measure performance. AHP performance measures are therefore currently under review.

Indicator #13	TARGET	BASELINE	CURRENT	DATA SOURCE																																			
The number of children reporting that they feel listened to in their school	Improve from Baseline	40%	↑39%	Education and Learning																																			
ANALYSIS																																							
Most recent data from the 2023 lifestyle survey with over participants from P7, S2 and S4 pupils current data is based on average of 3 age groups surveyed. Slight Increase from 2023 which averaged 36%																																							
<table><tr><th colspan="7">Do you feel listened to in your school?</th></tr><tr><th></th><th>2015</th><th>2017</th><th>2019</th><th>2021</th><th>2023</th><th>2025</th></tr><tr><td>Yes - very much so (P7)</td><td>65.6%</td><td>64.6%</td><td>57.6%</td><td>56.9%</td><td>50.4%</td><td>52.2%</td></tr><tr><td>Yes - very much so (S2)</td><td>43.2%</td><td>38.4%</td><td>34.8%</td><td>38.9%</td><td>29.9%</td><td>34.2%</td></tr><tr><td>Yes - very much so (S4)</td><td>32.0%</td><td>31.9%</td><td>20.8%</td><td>32.6%</td><td>26.8%</td><td>31.1%</td></tr></table>					Do you feel listened to in your school?								2015	2017	2019	2021	2023	2025	Yes - very much so (P7)	65.6%	64.6%	57.6%	56.9%	50.4%	52.2%	Yes - very much so (S2)	43.2%	38.4%	34.8%	38.9%	29.9%	34.2%	Yes - very much so (S4)	32.0%	31.9%	20.8%	32.6%	26.8%	31.1%
Do you feel listened to in your school?																																							
	2015	2017	2019	2021	2023	2025																																	
Yes - very much so (P7)	65.6%	64.6%	57.6%	56.9%	50.4%	52.2%																																	
Yes - very much so (S2)	43.2%	38.4%	34.8%	38.9%	29.9%	34.2%																																	
Yes - very much so (S4)	32.0%	31.9%	20.8%	32.6%	26.8%	31.1%																																	

Indicator #14	TARGET	BASELINE	CURRENT	DATA SOURCE
Self-reported incidence of smoking will decrease	Improve from Baseline	13%	↓ 2.6%	Education and Learning
ANALYSIS				
Most recent data from the 2025 lifestyle survey with over participants from P7, S2 and S4 pupils with a continued downward trend 2023 data was 3% Baseline for the data was established in 2011 – the survey is undertaken every two years across Highland schools With the shift being children choosing vaping rather smoking consideration this data was collected in 2025 survey				

Have you ever used a Vape or e-cigarette – 19.2% self-reported incidence of vaping. New measure so further analysis and exploration to change as an indicator measure to be agreed and finalised.

Indicator #15	TARGET	BASELINE	CURRENT	DATA SOURCE
The number of children who report that they drink alcohol at least once per week	Improve from Baseline	20%	↓ 1.6%	Education and Learning
ANALYSIS Most recent data from the 2023 lifestyle survey with over participants from P7, S2 and S4 pupils Data taken as an average of all 3 age groups. 2023 data – 4.3% P7 – 0.08%, S2 – 1.29%, S4 – 3.62% Baseline for the data was established in 2011 – the survey is undertaken every two years across Highland schools				

Indicator #16	TARGET	BASELINE	CURRENT	DATA SOURCE
The number of children in P7 who report that they use drugs at least once per week	Improve from Baseline	1.80%	↓ 0.00%	Education and Learning
ANALYSIS Most recent data from the 2025 lifestyle survey with over participants from P7, S2 and S4 pupils 2025 data – 0.25% Baseline for the data was established in 2011 – the survey is undertaken every two years across Highland schools				

Indicator #17	TARGET	BASELINE	CURRENT	DATA SOURCE
The number of children in S2 who report that they use drugs at least once per week	Improve from Baseline	5.30%	↓ 0.39%	Education and Learning
ANALYSIS Most recent data from the 2025 lifestyle survey with over participants from P7, S2 and S4 pupils 2023 data – 0.53%				

Indicator #18	TARGET	BASELINE	CURRENT	DATA SOURCE
The number of children in S4 who report that they use drugs at least once per week	Improve from Baseline	19.20%	↓0.29%	Education and Learning
ANALYSIS Most recent data from the 2025 lifestyle survey with over participants from P7, S2 and S4 pupils A reduction from 2023 – data – 2.38% Highland Substance Awareness Toolkit (H-SAT) Whole school early intervention approach to embedding H-SAT being tested in a high school. Regular review of content via google analytic Promotion via community events e.g. Vision 2026 launch, Delivery of H-SAT awareness and use of lesson plans to guidance staff Support to schools to develop substance aware policy Substance awareness education being delivered to education and associated staff Collaboration with Drug and Alcohol Recovery Service in development of naloxone policy for children's homes				

Indicator #19	TARGET	BASELINE	CURRENT	DATA SOURCE
Maintain high levels of positive destinations for pupils in Highland vs national averages	93%	91%	↑93	Education and Learning
ANALYSIS This data is reported annually.				

Indicator #20	TARGET	BASELINE	CURRENT	DATA SOURCE
The delay in the time taken between a child being accommodated and permanency decision will decrease (Target in Months)	9	12	↑ 9.4	Health & Social Care
ANALYSIS This data is collected, scrutinised and reported quarterly. Mitigating action plan is in place.				

Indicator #21	TARGET	BASELINE	CURRENT	DATA SOURCE
The number of care experienced children or young people placed out with Highland will decrease (spot purchase placements)	15	55	↑ 17	Health & Social Care
ANALYSIS				
This data is reported monthly as part of the data collection for the Home to Highland programme. The numbers of placements outwith Highland were at the lowest level ever recorded at 9 placements in Oct 2023 but have since increased again to 17, 2 placements above the target. This is a result of several larger families coming into spot purchased residential care and a number of young people with needs and behaviour that required specialist placements outwith Highland. Work is continually targeted through the Home to Highland Programme to reduce the number of children in residential placements outwith Highland. The team are currently working on returning 12 children over the next 12 months.				

Indicator #22	TARGET	BASELINE	CURRENT	DATA SOURCE
The number of care experienced children or young people in secure care will decrease	3	8	↑ 4	Health & Social Care
ANALYSIS				
New regulations came into force on 28 August and as of that date, there will be no new admissions of children under 18 to YOIs this is likely to affect this figure to rise				

Indicator #23	TARGET	BASELINE	CURRENT	DATA SOURCE
Number of children subject to initial and pre-birth child protection case conferences	N/A	26	↓ 37	HSC – CP Minimum Dataset
ANALYSIS				
This data is collected quarterly and reported in the Child Protection Minimum Dataset. This gives an indication of numbers of vulnerable children and young people (in terms of risk of harm). Increases in numbers may be positive as it can evidence good practice in assessing and responding to risk. It can also evidence increasing risk within communities and support the design and delivery of services. The number of children subject to initial and pre-birth case conferences in Highland has decreased by 11 from 48				

in the previous quarter, to 37 in the current quarter. This is the 3rd lowest within the last 6 quarters, while the highest recorded in this period was 51.
Data as of Q3 2024/25 (01/02/2025 – 30/04/2025).

Indicator #24	TARGET	BASELINE	CURRENT	DATA SOURCE
Number of initial and pre-birth child protection case conferences	N/A	19	↓20	HSC – CP Minimum Dataset
ANALYSIS This data is collected quarterly and reported in the Child Protection Minimum Dataset. This quarter sees a decrease in the number from case conferences from 26 in the previous quarter to 20 in this quarter. The number of case conferences can indicate family groups where the figure is lower than the number of children subject to initial and pre-birth child protection case conferences. Data can be benchmarked by converting numbers of children or Planning Meetings into a rate per 1,000 total children aged 0-17 (which can be found at National Records of Scotland Mid-Year Population Estimates). The rate per 1,000 can then be compared with other areas to assess the number of cases progressing to Initial or Pre-Birth Child Protection Planning Meeting. Data as of Q3 2024/25 (01/02/2025 – 30/04/2025).				

Indicator #25	TARGET	BASELINE	CURRENT	DATA SOURCE
Conversion rate (%) of children subject to initial and pre-birth child protection case conferences registered on child protection register	95%	78%	↑97%	HSC – CP Minimum Dataset
ANALYSIS This data is collected quarterly and reported in the Child Protection Minimum Dataset. The conversion rate has increased from 86% in the previous quarter to 97% in the current quarter. A high conversion rate indicates that risk is being assessed appropriately, progressing to child protection case conferences where required. This figure has remained consistently above 85% since Q2 2019/20. Data as of Q3 2024/25 (01/02/2025 – 30/04/2025).				

Indicator #26	TARGET	BASELINE	CURRENT	DATA SOURCE
Number of children on the child protection register as at end of reporting period	N/A	112	↑ 101	HSC – CP Minimum Dataset

ANALYSIS				
<p>This data is collected quarterly and reported in the Child Protection Minimum Dataset. The last 3 quarters have seen a small rise in the number of children on the register, with an increase of 6 in this quarter compared to the previous quarter. Looking at the broader trend, the last 6 quarters have seen a general decrease from a high of 142 children on the register in Q2 2023/24. It should be noted that larger sibling groups registering or deregistering can affect the overall number and give the impression of larger movements. An increase may be a positive move in terms of risk assessment and planning, it could also have been influenced by the impact of the Children's Services Inspection for children at risk of harm. However, it could also indicate increasing risk within communities, or because of the current financial climate, work is underway to examine the data in more detail.</p> <p>Data as of Q3 2024/25 (30/04/2025).</p>				

Indicator #27	TARGET	BASELINE	CURRENT	DATA SOURCE
Number of children de-registered from the child protection register in period	N/A	34	↑ 29	HSC – CP Minimum Dataset
ANALYSIS				
<p>This data is collected quarterly and reported in the Child Protection Minimum Dataset. This quarter sees a slight increase in the number of de-registrations from 26 in the previous quarter to 29 in the current quarter. The highest number of de-registrations recorded in the last 6 quarters was 60 in Q1 2024/25, this was found to be due to many sibling groups deregistering the same time.</p> <p>Indicator #31 can provide information as to how well risks are being reduced for the most vulnerable children and how well Child's Plans are working. However, this analysis must be supported by quality assurance processes to ensure children are de-registered at an appropriate time to avoid any escalation of risk and ensure ongoing support.</p> <p>Data as of Q3 2024/25 (01/02/2025 – 30/04/2025).</p>				

Indicator #28	TARGET	BASELINE	CURRENT	DATA SOURCE
Number of concerns recorded for children placed on the child protection register in period at a pre-birth or initial conference	N/A	58	↑ 121	HSC – CP Minimum Dataset
ANALYSIS				

This data is collected quarterly and reported in the Child Protection Minimum Dataset. The current quarter shows a rise in concerns from 95 in the previous quarter to 121 in the current quarter. This increase is as expected as its relative to the fairly large number of new registrations within the period (40). Most concerns recorded relate to vulnerability factors including Domestic Abuse (20), Services Finding it Hard to engage (9), Parental Alcohol Use (6), Parental Drug Use (15), Child Affected by Parental Mental Health (26). In terms of Impact and Abuse Emotional Abuse (17) and Neglect (17), are the largest concerns recorded. Criminal Exploitation, Child Experiencing Mental Health Problems, Sexual Abuse and Physical Abuse feature but as numbers are lower than 5, individual figures are not provided to protect the identity of children. There are an increasing number of concerns being recorded in registration which could suggest increasing complexities with families experiencing more than one risk/vulnerability factor. This has implications for service design and delivery, and learning and development provision to ensure staff have the right knowledge, skills and tools to support their work with families.

Data as of Q3 2024/25 (01/02/2025 – 30/04/2025)

Indicator #29	TARGET	BASELINE	CURRENT	DATA SOURCE
% of Initial Child Protection Planning Meetings with parental attendance	95%	TBC	↑ 97%	HSC – CP Minimum Dataset
ANALYSIS				
<p>This data is collected quarterly and reported in the Child Protection Minimum Dataset. The current quarter sees a rise in the % of meetings with parental attendance from 83% in the previous quarter to 97%.</p> <p>Percentage of Initial and Pre-birth Child Protection Planning Meetings where at least one person who usually has care of the child attends (e.g. a parent or carer). This indicator highlights the level of parental involvement in decision making and planning around the child and will be reinforced by audit activity into the quality of their involvement (e.g. level of active participation as well as attendance). This figure has remained consistently high over the past 2 years and has never fallen below 80%.</p> <p>Data as of Q3 2024/25 (01/02/2025 – 30/04/2025).</p>				

Indicator #30	TARGET	BASELINE	CURRENT	DATA SOURCE
Number of children referred to the Children's Reporter on non-offence grounds	Reduction from Baseline	TBC	↓ 147	HSC – SCRA Quarterly Reports
ANALYSIS				
<p>Number of children referred to the Scottish Children's Reporter Administration (SCRA) on non-offence (care and protection) grounds. Non-offence referrals constitute referrals that have grounds other than section 67 of the 2011 Act. These are also referred to as Care and Protection referrals by some agencies. Work has been undertaken through the Quality Assurance Sub-Group to look at SCRA referrals by type and by age due to an increase in referrals in relation to lack of parental care. Work has also been undertaken to look at older young people being referred in to SCRA and discovered that where there has been an uplift in referrals during any one quarter, these tend to refer to a small cohort of young people with a large number of referrals. Latest data from Q1 2024/25 =137</p>				

Indicator #31	TARGET	BASELINE	CURRENT	DATA SOURCE
Number of children referred to the Children's Reporter on offence grounds	Reduction from Baseline	TBC	↓ 41	HSC-SCRA Quarterly Reports
ANALYSIS This data is collected quarterly and reported in the Child Protection Minimum Dataset. There has been a rise of 13 children referred to the reporter on offence grounds in this quarter compared to the previous quarter (28). An increase in previous figures could reflect the increasing focus on responding to young people in conflict with the law through the Children's Hearing System rather than within an adult criminal justice system. It is too early to determine if this is the case but will be a key focus over the next few years. We are seeing an increase this quarter however, figures are relatively small so increases and decreases in the data need to be considered over a longer period. Data as of Q2 2024/25, new SCRA data for Q3 is expected mid-May 2025				

Indicator #32	TARGET	BASELINE	CURRENT	DATA SOURCE
Number of looked after children and young people at home with parents	Increase from Baseline	112	↑ 110	HSC - Scottish Government Annual Return
ANALYSIS Looked After Children data is as of the 31/07/2024. This data is collected and quality-assured annually as part of the statutory returns to Scottish Government. There has been an increase of 7 children/YP that are with friends and families in 2024 compared to 2023 (74).				

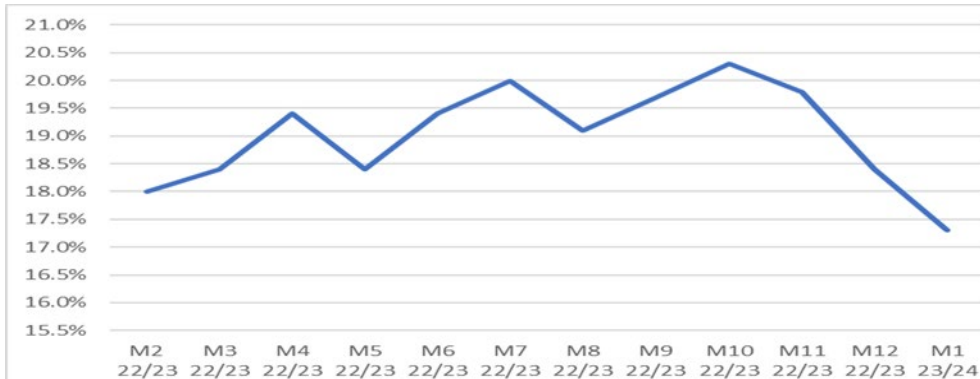
Indicator #33	TARGET	BASELINE	CURRENT	DATA SOURCE
Number of looked after children and young people with friends and families	Increase from Baseline	100	↑ 81	HSC - Scottish Government Annual Return
ANALYSIS Looked After Children data is as of the 31/07/2024. This data is collected and quality-assured annually as part of the statutory returns to Scottish Government. There has been an increase of 7 children/YP that are with friends and families in 2024 compared to 2023 (74).				

Indicator #34	TARGET	BASELINE	CURRENT	DATA SOURCE
Number of looked after children and young people with foster parents provided by local authority	Increase from Baseline	121	↓ 97	HSC - Scottish Government Annual Return
ANALYSIS Looked After Children data is as of the 31/07/2024. This data is collected and quality-assured annually as part of the statutory returns to Scottish Government. There has been a decrease of 7 children/YP that are with foster parents provided by local authority in 2024 compared to 2023 (104).				

Indicator #35	TARGET	BASELINE	CURRENT	DATA SOURCE
Number of looked after children and young people with prospective adopters	Increase from Baseline	12	↓ 14	HSC - Scottish Government Annual Return
ANALYSIS Looked After Children data is as of the 31/07/2024. This data is collected and quality-assured annually as part of the statutory returns to Scottish Government. There has been a decrease of 1 child/YP that are with prospective adopters in 2024 compared to 2023 (15).				

Indicator #36	TARGET	BASELINE	CURRENT	DATA SOURCE
Number of looked after children and young people within a local authority provided house	Reduction from Baseline	81	↑ 57	HSC - Scottish Government Annual Return
ANALYSIS				

Looked After Children data is as of the 31/07/2024.
 This data is collected and quality-assured annually as part of the statutory returns to Scottish Government.
 There has been an increase of 5 children/YP that are within a local authority provided house in 2024 compared to 2023 (52).
 The number of available in-Highland residential beds has decreased by 7 in the past year due to a number of provisions in the north closing

Indicator #37	TARGET	BASELINE	CURRENT	DATA SOURCE																										
The percentage of children needing to live away from the family home but supported in kinship care increases	20%	19%	19.4%	Health & Social Care																										
ANALYSIS																														
This data is reported monthly on PRMS, There has been a slight increase in the monthly figure, with the current figure sitting slightly below the target but above the baseline figure.		 <table><thead><tr><th>Month</th><th>Percentage</th></tr></thead><tbody><tr><td>M2 22/23</td><td>18.0%</td></tr><tr><td>M3 22/23</td><td>18.4%</td></tr><tr><td>M4 22/23</td><td>19.4%</td></tr><tr><td>M5 22/23</td><td>18.4%</td></tr><tr><td>M6 22/23</td><td>19.4%</td></tr><tr><td>M7 22/23</td><td>20.0%</td></tr><tr><td>M8 22/23</td><td>19.1%</td></tr><tr><td>M9 22/23</td><td>19.6%</td></tr><tr><td>M10 22/23</td><td>20.3%</td></tr><tr><td>M11 22/23</td><td>19.8%</td></tr><tr><td>M12 22/23</td><td>18.4%</td></tr><tr><td>M1 23/24</td><td>17.4%</td></tr></tbody></table>			Month	Percentage	M2 22/23	18.0%	M3 22/23	18.4%	M4 22/23	19.4%	M5 22/23	18.4%	M6 22/23	19.4%	M7 22/23	20.0%	M8 22/23	19.1%	M9 22/23	19.6%	M10 22/23	20.3%	M11 22/23	19.8%	M12 22/23	18.4%	M1 23/24	17.4%
Month	Percentage																													
M2 22/23	18.0%																													
M3 22/23	18.4%																													
M4 22/23	19.4%																													
M5 22/23	18.4%																													
M6 22/23	19.4%																													
M7 22/23	20.0%																													
M8 22/23	19.1%																													
M9 22/23	19.6%																													
M10 22/23	20.3%																													
M11 22/23	19.8%																													
M12 22/23	18.4%																													
M1 23/24	17.4%																													

Indicator #38	TARGET	BASELINE	CURRENT	DATA SOURCE
The number of children where permanence is achieved via a Residence order increases	82	72	137	Health & Social Care
ANALYSIS				