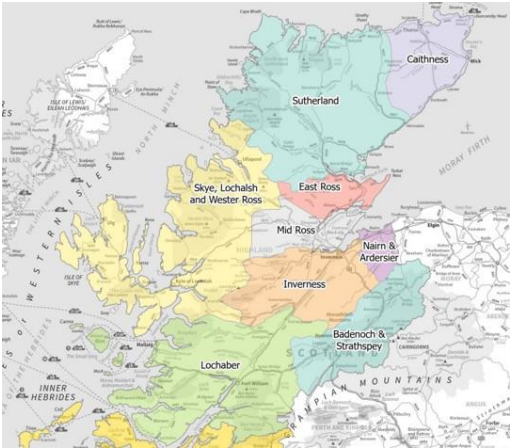


Interim Chief
Officer

Highland Health &
Social Care
Partnership

September 2025





British
Association of
Occupational
Therapists



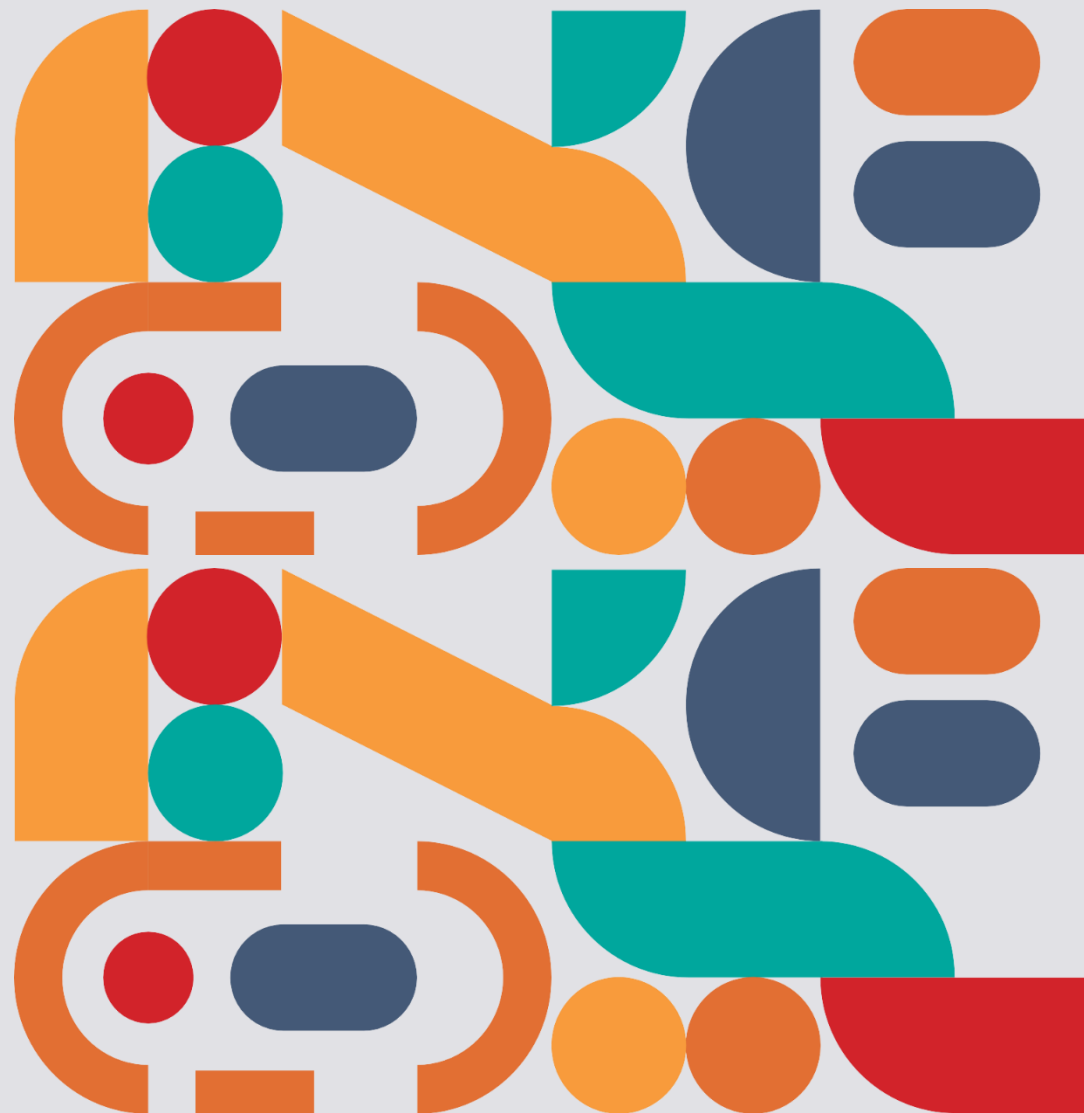
Joint inspection of adult services

Integration and outcomes

Highland Health and Social Care Partnership

- Inspection question: How effectively is the partnership working together, strategically and operationally, to deliver seamless services that achieve good health and wellbeing outcomes for adults?
- Second theme – people living with mental illness

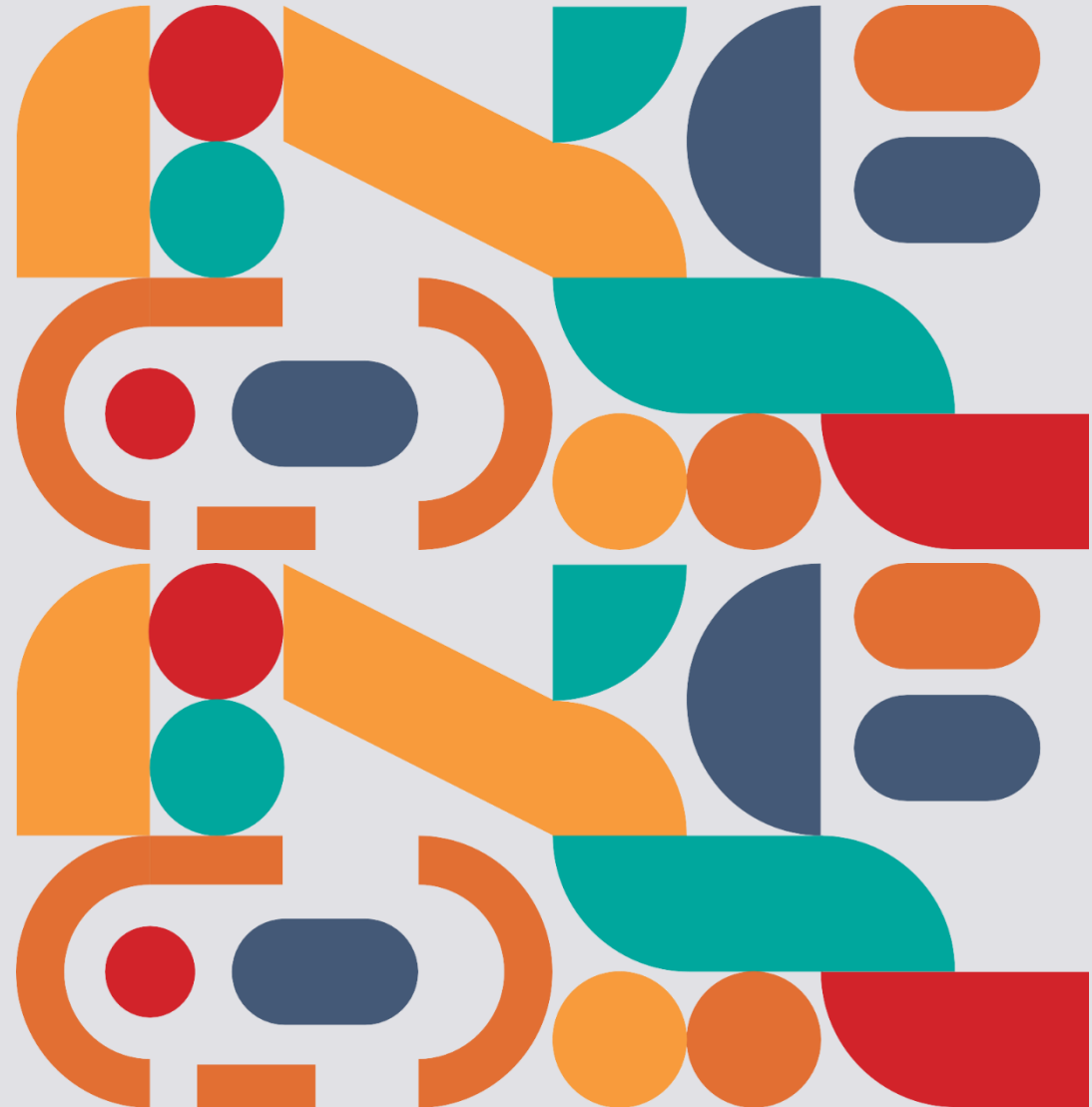
Joint Inspection of Adult Services –
Integration and outcomes – focus on
people living with mental illness
Highland Health and Social Care
Partnership



Joint inspection of adult services

The report highlights several key strengths, including:

- Effective early intervention and prevention initiatives that support people to maintain good mental health and wellbeing.
- Strong collaborative working across health, social care, third and independent sectors.
- A clear strategic vision and values-led leadership committed to improving services and outcomes.
- Innovative approaches to reducing inequalities, particularly in remote and rural areas.
- A responsive and impactful carer support service, Connecting Carers, which has improved outcomes for many unpaid carers.



Joint inspection of adult services

We acknowledge the areas identified for improvement and are committed to addressing them. These include:

- Developing a robust integrated outcomes framework to better capture and use personal outcomes data.
- Enhancing information accessibility for people and carers seeking mental health support.
- Strengthening workforce planning and quality assurance systems to support staff and improve service delivery.
- Scaling up successful pilot initiatives to ensure equitable access to care across all Highland districts.

