

The Highland Council

| | |
|-------------|-------------------|
| Agenda Item | 5b |
| Report No | BIER-07-26 |

Committee: Black Isle and Easter Ross Area Committee

Date: 26 January 2026

Report Title: Fortrose Academy Associated School Group Overview

Report By: Assistant Chief Executive – People Cluster

1. Purpose/Executive Summary

- 1.1 This report provides an update of key information in relation to the schools within the Fortrose Academy Associated School Group (ASG) and provides useful updated links to further information in relation to these schools.
- 1.2 The primary schools in this area serve 689 pupils, ELC settings serve 143 children (93 in LA settings and 50 in Partner settings as at September Census), with the secondary school serving 621 young people.

2. Recommendations

- 2.1 Members are asked to:
 - i. Scrutinise and note the content of the report

3. Implications

- 3.1 Resource
There are no implications arising from this report.
- 3.2 Legal
There are no implications arising from this report.
- 3.3 Risk
The Service is committed to a sustained focus on progress and improvement to mitigate against the risk of under-performance which impacts on children and young people being able to achieve their full potential.
- 3.4 Health and Safety (risks arising from changes to plant, equipment, process, or people)
There are no implications arising from this report.
- 3.5 Gaelic
Continued improvements in primary phase Gaelic Medium Education

attainment will support progress in secondary.

4. Impacts

- 4.1 In Highland, all policies, strategies or service changes are subject to an integrated screening for impact for Equalities, Poverty and Human Rights, Children's Rights and Wellbeing, Climate Change, Islands and Mainland Rural Communities, and Data Protection. Where identified as required, a full impact assessment will be undertaken.
- 4.2 Considering impacts is a core part of the decision-making process and needs to inform the decision-making process. When taking any decision, Members must give due regard to the findings of any assessment.
- 4.3 This is an update report and therefore an impact assessment is not required.

5. School Website Links

- 5.1 Secondary – [Link to Fortrose Academy website](#)
Primary – [Link to School information on Highland Council website](#)

| School | Link to School Webpage |
|-----------------------|---|
| Avoch Primary | Avoch Primary website |
| Cromarty Primary | Cromarty Primary website |
| Culbokie Primary | Culbokie Primary website |
| Munlochy Primary | Munlochy Primary website |
| North Kessock Primary | North Kessock Primary website |
| Resolis Primary | Resolis Primary website |
| Tore Primary | Tore Primary website |

- 5.2 Standards and Quality Reports – latest reports:

| School | Leadership of change | Learning, teaching and assessment | Ensuring wellbeing, equality and inclusion | Raising attainment and achievement |
|-----------------------|----------------------|-----------------------------------|--|------------------------------------|
| Avoch Primary | Good | Good | Good | Good |
| Cromarty Primary | Very Good | Good | Very Good | Very Good |
| Culbokie Primary | Good | Good | Good | Good |
| Munlochy Primary | Good | Satisfactory | Good | Satisfactory |
| North Kessock Primary | Good | Good | Good | Good |
| Resolis Primary | Good | Satisfactory | Good | Good |
| Tore Primary | Good | Satisfactory | Good | Satisfactory |

| ELC | Leadership of change | Learning, teaching and assessment | Ensuring wellbeing, equality and inclusion | Raising attainment and achievement |
|---------------------------|----------------------|-----------------------------------|--|------------------------------------|
| Avoch Primary ELC | Satisfactory | Satisfactory | Satisfactory | Satisfactory |
| Culbokie Primary ELC | Good | Satisfactory | Good | Satisfactory |
| North Kessock Primary ELC | Satisfactory | Good | Satisfactory | Satisfactory |
| Resolis Primary ELC | Very Good | Good | Very Good | Very Good |

6. Education Scotland Inspection Reports

6.1

| School | Date of Latest Published Report | Link to Education Scotland Pages |
|-----------------------|---------------------------------|----------------------------------|
| Avoch Primary | *+ 5 Years | Link |
| Cromarty Primary | 12/14/2021 | Link |
| Culbokie Primary | *+ 5 Years | Link |
| Munlochy Primary | 3/26/2024 | Link |
| North Kessock Primary | *+ 5 Years | Link |
| Resolis Primary | *+ 5 Years | Link |
| Tore Primary | *+ 5 Years | Link |

*Education Scotland website shows review and inspection reports in last 5 years, older reports are no longer available to view on the site.

7. School Rolls

7.1 ASG School Rolls – Session 2025-26

| Primary School | P1 | P2 | P3 | P4 | P5 | P6 | P7 | Total |
|-----------------------|----|----|-----|----|-----|-----|-----|-------|
| Avoch Primary | 32 | 36 | 39 | 36 | 37 | 42 | 42 | 264 |
| Cromarty Primary | 8 | 4 | 10 | 9 | 7 | 6 | 7 | 51 |
| Culbokie Primary | 7 | 18 | 14 | 10 | 21 | 10 | 18 | 98 |
| Munlochy Primary | 4 | 9 | 8 | 11 | 10 | 14 | 16 | 72 |
| North Kessock Primary | 23 | 20 | 22 | 21 | 22 | 19 | 14 | 141 |
| Resolis Primary | 8 | 8 | 7 | 6 | 6 | 8 | 7 | 50 |
| Tore Primary | 2 | 0 | 0 | 3 | 2 | 5 | 1 | 13 |
| Total | 84 | 95 | 100 | 96 | 105 | 104 | 105 | 689 |

| School Name | S1 | S2 | S3 | S4 | S5 | S6 | TOTAL S1-S6 |
|------------------|-----|-----|-----|-----|-----|----|-------------|
| Fortrose Academy | 103 | 120 | 106 | 122 | 102 | 68 | 621 |

7.2 School Roll and Capacity Forecasts

The school roll and capacity forecast for the ASG can be found here:

https://www.highland.gov.uk/info/878/schools/818/school_roll_forecasts

8. Attendance / Absence / Exclusions – Session 2024/25

8.1

| Primary Schools | % Actual Attendance | % Authorised Absences | % Unauthorised Absences | (2024/25) No of Exclusions | (2024/25) Exclusion Rates per 1000 pupils |
|----------------------------|---------------------|-----------------------|-------------------------|----------------------------|---|
| National Primary (2024-25) | 93.10% | 4.30% | 2.60% | 2004 | 5.3 |
| Highland Primary (2024-25) | 92.70% | 5.10% | C | 61 | C |
| Avoch Primary | 94.48% | 3.48% | 2.03% | C | C |
| Cromarty Primary | 94.42% | 4.53% | 1.04% | 0 | 0 |
| Culbokie Primary | 94.90% | 3.48% | 1.62% | 0 | 0 |
| Munlochy Primary | 94.45% | 3.94% | 1.62% | 0 | 0 |
| North Kessock Primary | 92.90% | 4.43% | C | C | C |
| Resolis Primary | 95.54% | 3.90% | 0.57% | C | C |
| Tore Primary | 86.42% | 10.97% | 2.61% | 0 | 0 |

| Secondary School | % Actual Attendance | % Authorised Absences | % Unauthorised Absences | (2024/25) No of Exclusions | (2024/25) Exclusion Rates per 1000 pupils |
|------------------------------|---------------------|-----------------------|-------------------------|----------------------------|---|
| National Secondary (2024-25) | 88.40% | 6.60% | 5.00% | 8472 | 26.9 |
| Highland Secondary (2024-25) | 86.80% | 7.50% | 5.70% | 454 | 32.7 |
| Fortrose Academy | 88.00% | 8.41% | 3.51% | 33 | 52.5 |

c = value suppressed to protect against the risk of disclosure of personal information

9. Attainment Profile

9.1 Primary Attainment – Pupils Achieving Expected National Curriculum for Excellence Levels – P1, 4, 7 Combined, Literacy and Numeracy

| 2024/25 | Roll P1/4/7 | Reading | Writing | Listening & Talking | Numeracy |
|-----------------------|-------------|---------|---------|---------------------|----------|
| National | | 81% | 77% | 88% | 80% |
| Highland | | 77% | 72% | 87% | 75% |
| Avoch Primary | 114 | 80-90% | 70-80% | 80-90% | 70-80% |
| Cromarty Primary | 19 | c | c | c | c |
| Culbokie Primary | 53 | 80-90% | 80-90% | 90+% | 90+% |
| Munlochy Primary | 29 | 70-80% | 70-80% | 90+% | 80-90% |
| North Kessock Primary | 55 | 90+% | 80-90% | 90+% | 80-90% |
| Resolis Primary | 24 | 70-80% | 60-70% | 90+% | 70-80% |
| Tore Primary | 7 | c | c | c | c |

| 2023/24 | Roll P1/4/7 | Reading | Writing | Listening & Talking | Numeracy |
|--------------------------|----------------|---------|---------|------------------------|----------|
| National | | 81% | 76% | 87% | 80% |
| Highland | | 76% | 71% | 87% | 74% |
| Avoch Primary | 142 | 70-80% | 70-80% | 90+% | 80-90% |
| Cromarty Primary | 26 | 70-80% | 70-80% | 80-90% | 70-80% |
| Culbokie Primary | 36 | 80-90% | 80-90% | 90+% | 80-90% |
| Munlochy Primary | 23 | 90+% | 80-90% | 90+% | 90+% |
| North Kessock Primary | 64 | 80-90% | 70-80% | 90+% | 70-80% |
| Resolis Primary | 27 | 80-90% | 80-90% | 90+% | 80-90% |
| Tore Primary | 8 | c | c | c | c |

| 2022/23 | Roll P1/4/7 | Reading | Writing | Listening & Talking | Numeracy |
|--------------------------|----------------|---------|---------|------------------------|----------|
| National | | 80% | 75% | 87% | 80% |
| Highland | | 74% | 68% | 74% | 72% |
| Avoch Primary | 105 | 80-90% | 80-90% | 90+% | 80-90% |
| Cromarty Primary | 18 | 90+% | 90+% | 90+% | 90+% |
| Culbokie Primary | 45 | 80-90% | 80-90% | 90+% | 80-90% |
| Munlochy Primary | 37 | 90+% | 80-90% | 90+% | 90+% |
| North Kessock Primary | 56 | 70-80% | 70-80% | 70-80% | 60-70% |
| Resolis Primary | 31 | 80-90% | 70-80% | 80-90% | 80-90% |
| Tore Primary | 9 | c | c | c | c |

c = value suppressed to protect against the risk of disclosure of personal information

9.2 Secondary Attainment – Literacy

| School Leavers Achieving Literacy | | | |
|-----------------------------------|---------|--------------------|--------------------|
| Establishment | Year | % Level 4 Literacy | % Level 5 Literacy |
| Fortrose Academy | 2023/24 | 94% | 78% |
| Virtual Comparator | 2023/24 | 96% | 88% |
| Fortrose Academy | 2022/23 | 95% | 83% |
| Virtual Comparator | 2022/23 | 96% | 83% |
| Fortrose Academy | 2021/23 | C | 93% |
| Virtual Comparator | 2021/22 | C | 90% |

c = value suppressed to protect against the risk of disclosure of personal information

9.2.1 Secondary Attainment – Numeracy

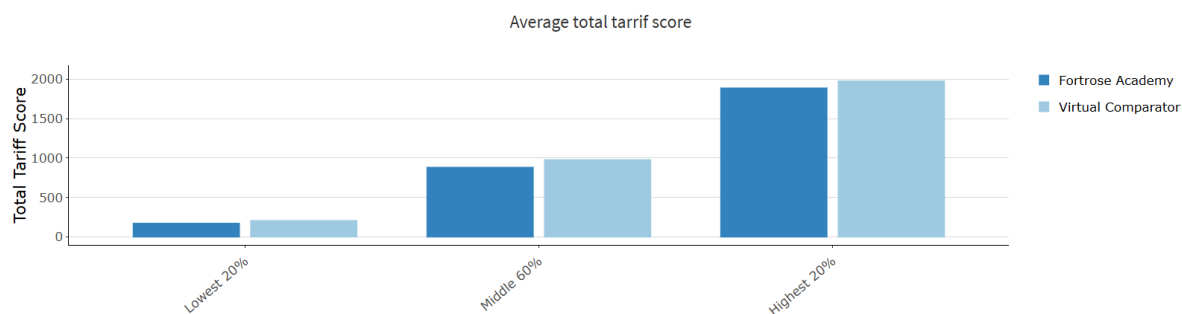
| School Leavers Achieving Numeracy | | | |
|-----------------------------------|---------|--------------------|--------------------|
| Establishment | Year | % Level 4 Numeracy | % Level 5 Numeracy |
| Fortrose Academy | 2023/24 | 94% | 84% |
| Virtual Comparator | 2023/24 | 94% | 78% |
| Fortrose Academy | 2022/23 | C | 84% |
| Virtual Comparator | 2022/23 | C | 78% |
| Fortrose Academy | 2021/23 | C | 81% |
| Virtual Comparator | 2021/22 | C | 80% |

c = value suppressed to protect against the risk of disclosure of personal information

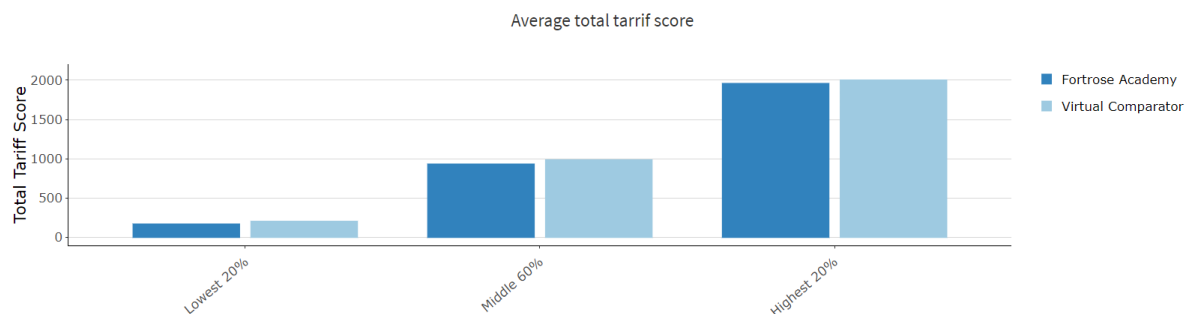
9.2.2 Senior Phase

| Average Total Tariff for Leavers | | | | |
|----------------------------------|---------|------------|------------|-------------|
| Establishment | Year | Lowest 20% | Middle 60% | Highest 20% |
| Fortrose Academy | 2023/24 | 168 | 878 | 1885 |
| Virtual Comparator | 2023/24 | 202 | 975 | 1974 |
| Fortrose Academy | 2022/23 | 165 | 929 | 1956 |
| Virtual Comparator | 2022/23 | 200 | 983 | 2000 |
| Fortrose Academy | 2021/23 | 222 | 931 | 1908 |
| Virtual Comparator | 2021/22 | 276 | 1082 | 2031 |

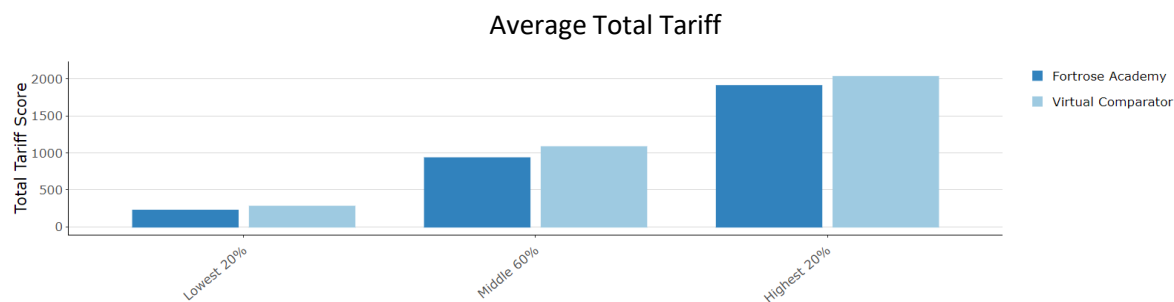
9.3 2023/24



9.4 2022/23



9.5 2021/22



9.6 Pupil Destinations 16+

Leaver destination information is taken from the School Leaver Destination data collected by Skills Development Scotland (SDS) on behalf of the Scottish Government.

| | % Positive Destinations | | |
|------------------|-------------------------|---------|---------|
| | 2021/22 | 2022/23 | 2023/24 |
| Fortrose Academy | 99.12 | 98.04 | 99.27 |
| Highland | 94.45 | 95.27 | 96.5 |
| Scotland | 95.74 | 95.87 | 95.71 |

9.6.1 Number of pupils leaving in school year:

| | Fortrose Academy | HIGHLAND | SCOTLAND |
|---------|------------------|----------|----------|
| 2021/22 | 113 | 2559 | 55211 |
| 2022/23 | 102 | 2474 | 54719 |
| 2023/24 | 137 | 2629 | 55961 |

9.6.2 Destination of pupils (%):

| | Fortrose Academy | | | HIGHLAND | | | SCOTLAND | | |
|------------------------|------------------|-------|-------|----------|-------|-------|----------|-------|-------|
| DESTINATION | 21/22 | 22/23 | 23/24 | 21/22 | 22/23 | 23/24 | 21/22 | 22/23 | 23/24 |
| Higher Education | 41.59 | 36.27 | 32.85 | 34.11 | 33.1 | 32.07 | 41.27 | 40.3 | 40.8 |
| Further Education | 15.92 | 20.59 | 16.79 | 19.54 | 20.53 | 20.39 | 25.45 | 26.62 | 26.43 |
| Training | 3.53 | 0.98 | 0.73 | 1.52 | 1.9 | 3.04 | 2.91 | 3.35 | 3.89 |
| Employment | 38.05 | 40.2 | 48.91 | 38.73 | 39.05 | 40.4 | 25.12 | 24.34 | 23.08 |
| Voluntary | 0 | 0 | 0 | 0.31 | 0.53 | 0.42 | 0.47 | 0.52 | 0.58 |
| Activity Agreements | 0 | 0 | 0 | 0 | 0 | 0 | 0 | 0 | 0 |
| Unemployed Seeking | 0 | 1.96 | 0.73 | 2.89 | 2.95 | 2.05 | 2.32 | 2.24 | 2.16 |
| Unemployed Not Seeking | 0.88 | 0 | 0 | 1.76 | 1.62 | 1.45 | 1.55 | 1.57 | 1.86 |
| Unknown | 0 | 0 | 0 | 0.9 | 0.16 | 0 | 0.4 | 0.32 | 0.27 |

Note: National averages have been calculated from the figures for all available local authority and grant-aided schools, whereas the local authority averages are based on local authority schools only.

Designation: Assistant Chief Executive - People

Date: 8 January 2026

Author: Annika Jansson – Area Quality Improvement Manager, N2 (AQIM)

Background Notes:

- (For all figures marked with "C")
c = value suppressed to protect against the risk of disclosure of personal information
- All data used within this report comes from the most recently published source.

Appendices: n/a