

The Highland Council

Agenda Item	5d
Report No	BIER-09-26

Committee: Black Isle and Easter Ross Area Committee

Date: 26 January 2026

Report Title: Tain Royal Academy Associated School Group Overview

Report By: Assistant Chief Executive – People Cluster

1. Purpose/Executive Summary

- 1.1 This report provides an update of key information in relation to the schools within the Tain Royal Academy Associated School Group (ASG) and provides useful updated links to further information in relation to these schools.
- 1.2 The primary schools in this area serve 543 pupils, ELC settings serve 135 children (45 in LA settings and 90 in Partner settings as at September Census), with the secondary school serving 492 young people.

2. Recommendations

- 2.1 Members are asked to:
 - i. Scrutinise and note the content of the report

3. Implications

- 3.1 Resource
There are no implications arising from this report.
- 3.2 Legal
There are no implications arising from this report.
- 3.3 Risk
The Service is committed to a sustained focus on progress and improvement to mitigate against the risk of under-performance which impacts on children and young people being able to achieve their full potential.
- 3.4 Health and Safety (risks arising from changes to plant, equipment, process, or people)
There are no implications arising from this report.
- 3.5 Gaelic
Continued improvements in primary phase Gaelic Medium Education

attainment will support progress in secondary.

4. Impacts

- 4.1 In Highland, all policies, strategies or service changes are subject to an integrated screening for impact for Equalities, Poverty and Human Rights, Children's Rights and Wellbeing, Climate Change, Islands and Mainland Rural Communities, and Data Protection. Where identified as required, a full impact assessment will be undertaken.
- 4.2 Considering impacts is a core part of the decision-making process and needs to inform the decision-making process. When taking any decision, Members must give due regard to the findings of any assessment.
- 4.3 This is an update report and therefore an impact assessment is not required.

5. School Website Links

- 5.1 Secondary – [Link to Tain Royal Academy website](#)
 Primary – [Link to School information on Highland Council website](#)

School	Link to School Webpage
Craighill Primary	Craighill Primary website
Gledfield Primary	Gledfield Primary website
Hill of Fearn Primary	Hill of Fearn Primary website
Hilton of Cadboll Primary	Hilton of Cadboll Primary website
Inver Primary	Inver Primary website
Knockbreck Primary (Tain)	Knockbreck Primary (Tain) website
Tarbat Old Primary	Tarbat Old Primary website

- 5.2 Standards and Quality Reports – latest reports:

School	Leadership of change	Learning, teaching and assessment	Ensuring wellbeing, equality and inclusion	Raising attainment and achievement
Craighill Primary	Good	Good	Very Good	Good
Gledfield Primary	Satisfactory	Satisfactory	Good	Satisfactory
Hill of Fearn Primary	Good	Good	Good	Good
Hilton of Cadboll Primary	Good	Good	Good	Good
Inver Primary	Good	Very Good	Very Good	Very Good
Knockbreck Primary (Tain)	Good	Good	Very Good	Good
Tarbat Old Primary	Good	Good	Good	Good

ELC	Leadership of change	Learning, teaching and assessment	Ensuring wellbeing, equality and inclusion	Raising attainment and achievement
Craighill Primary ELC	Good	Good	Very Good	Good
Gledfield Primary ELC	Good	Good	Good	Good
Hill of Fearn Primary ELC	Satisfactory	Good	Good	Satisfactory
Hilton of Cadboll Primary ELC	Satisfactory	Good	Good	Good
Tarbat Old Primary ELC	Satisfactory	Satisfactory	Good	Satisfactory

6. Education Scotland Inspection Reports

6.1

School	Date of Latest Published Report	Link to Education Scotland Pages
Tain Royal Academy	*+ 5 Years	Link
Craighill Primary	9/19/2023	Link
Gledfield Primary	8/26/2025	Link
Hill of Fearn Primary	Report not yet published (27 October 2025)	Link
Hilton of Cadboll Primary	Report not yet published (3 November 2025)	Link
Inver Primary	*+ 5 Years	Link
Knockbreck Primary (Tain)	*+ 5 Years	Link

*Education Scotland website shows review and inspection reports in last 5 years, older reports are no longer available to view on the site.

7. School Rolls

7.1 ASG School Rolls – Session 2025-26

Primary School	P1	P2	P3	P4	P5	P6	P7	Total
Craighill Primary	26	24	34	21	30	25	35	195
Gledfield Primary	3	4	6	1	4	3	2	23
Hill of Fearn Primary	5	5	2	5	8	2	6	33
Hilton of Cadboll Primary	7	12	14	21	9	13	18	94
Inver Primary	1	2	1	3	8		4	19
Knockbreck Primary (Tain)	15	28	13	19	27	22	24	148
Tarbat Old Primary	4		9	4	4	5	5	31
Total	61	75	79	74	90	70	94	543

School Name	S1	S2	S3	S4	S5	S6	TOTAL S1-S6
Tain Royal Academy	95	96	87	92	71	51	492

7.2 School Roll and Capacity Forecasts

The school roll and capacity forecast for the ASG can be found here:

https://www.highland.gov.uk/info/878/schools/818/school_roll_forecasts

8. Attendance / Absence / Exclusions – Session 2024/25

8.1

Primary Schools	% Actual Attendance	% Authorised Absences	% Unauthorised Absences	(2024/25) No of Exclusions	(2024/25) Exclusion Rates per 1000 pupils
National Primary (2024-25)	93.10%	4.30%	2.60%	2004	5.3
Highland Primary (2024-25)	92.70%	5.10%	C	61	C
Craighill Primary	92.72%	5.45%	C	C	C
Gledfield Primary	94.53%	4.51%	0.97%	-	-
Hill of Fearn Primary	95.01%	2.91%	C	C	C
Hilton of Cadboll Primary	88.30%	11.05%	0.66%	-	-
Inver Primary	95.99%	3.44%	0.57%	-	-
Knockbreck Primary (Tain)	92.64%	4.85%	C	C	C
Tarbat Old Primary	94.84%	3.75%	1.41%	-	-

Secondary School	% Actual Attendance	% Authorised Absences	% Unauthorised Absences	(2024/25) No of Exclusions	(2024/25) Exclusion Rates per 1000 pupils
National Secondary (2024-25)	88.40%	6.60%	5.00%	8472	26.9
Highland Secondary (2024-25)	86.80%	7.50%	5.70%	454	32.7
Tain Royal Academy	86.50%	8.92%	4.47%	35	69.0

c = value suppressed to protect against the risk of disclosure of personal information

9. Attainment Profile

9.1 Primary Attainment – Pupils Achieving Expected National Curriculum for Excellence Levels – P1, 4, 7 Combined, Literacy and Numeracy

2024/25	Roll P1/4/7	Reading	Writing	Listening & Talking	Numeracy
National		81%	77%	88%	80%
Highland		77%	72%	87%	75%
Craighill Primary	88	70-80%	60-70%	80-90%	60-70%
Gledfield Primary	13	C	C	C	C
Hill of Fearn Primary	24	90+%	80-90%	90+%	80-90%
Hilton of Cadboll Primary	37	70-80%	70-80%	80-90%	80-90%
Inver Primary	13	C	C	C	C
Knockbreck Primary (Tain)	77	70-80%	60-70%	70-80%	60-70%
Tarbat Old Primary	9	C	C	C	C

2023/24	Roll P1/4/7	Reading	Writing	Listening & Talking	Numeracy
National		81%	76%	87%	80%
Highland		76%	71%	87%	74%
Craighill Primary	96	80-90%	70-80%	90+%	70-80%
Gledfield Primary	11	C	C	C	C
Hill of Fearn Primary	10	C	C	C	C
Hilton of Cadboll Primary	44	70-80%	60-70%	90+%	70-80%
Inver Primary	8	C	C	C	C
Knockbreck Primary (Tain)	63	70-80%	60-70%	70-80%	60-70%
Tarbat Old Primary	18	C	C	C	C

2022/23	Roll P1/4/7	Reading	Writing	Listening & Talking	Numeracy
National		80%	75%	87%	80%
Highland		74%	68%	74%	72%
Craighill Primary	75	80-90%	80-90%	80-90%	80-90%
Gledfield Primary	6	C	C	C	C
Hill of Fearn Primary	10	C	C	C	C
Hilton of Cadboll Primary	58	60-70%	70-80%	80-90%	70-80%
Inver Primary	15	C	C	C	C
Knockbreck Primary (Tain)	74	60-70%	60-70%	80-90%	70-80%
Tarbat Old Primary	17	C	C	C	C

c = value suppressed to protect against the risk of disclosure of personal information

9.2 Secondary Attainment – Literacy

School Leavers Achieving Literacy			
Establishment	Year	% Level 4 Literacy	% Level 5 Literacy
Tain Royal Academy	2023/24	93%	88%
Virtual Comparator	2023/24	91%	73%
Tain Royal Academy	2022/23	94%	84%
Virtual Comparator	2022/23	93%	79%
Tain Royal Academy	2021/22	88%	81%
Virtual Comparator	2021/22	94%	78%

c = value suppressed to protect against the risk of disclosure of personal information

9.2.1 Secondary Attainment – Numeracy

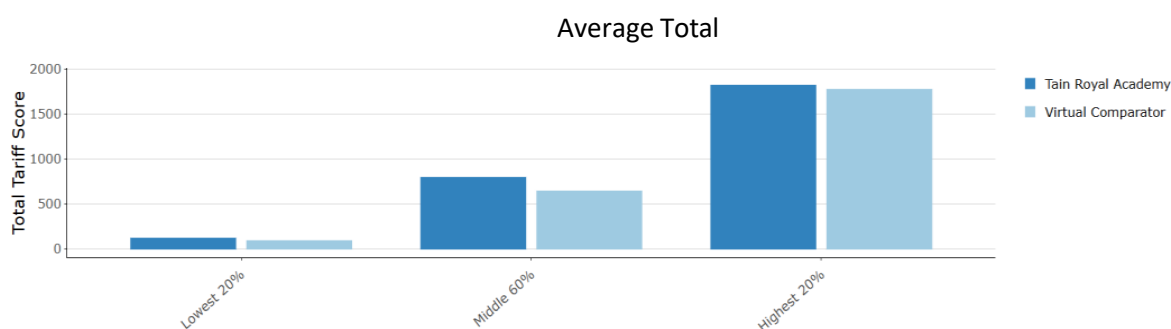
School Leavers Achieving Numeracy			
Establishment	Year	% Level 4 Numeracy	% Level 5 Numeracy
Tain Royal Academy	2023/24	84%	66%
Virtual Comparator	2023/24	88%	64%
Tain Royal Academy	2022/23	93%	76%
Virtual Comparator	2022/23	91%	68%
Tain Royal Academy	2021/22	87%	65%
Virtual Comparator	2021/22	90%	66%

c = value suppressed to protect against the risk of disclosure of personal information

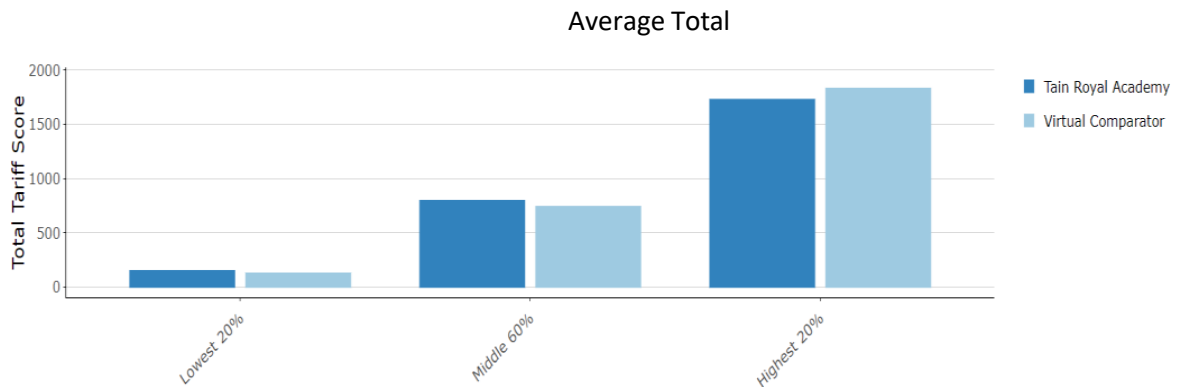
9.2.2 Senior Phase

Average Total Tariff for Leavers				
Establishment	Year	Lowest 20%	Middle 60%	Highest 20%
Tain Royal Academy	2023/24	114	790	1815
Virtual Comparator	2023/24	86	638	1769
Tain Royal Academy	2022/23	147	794	1726
Virtual Comparator	2022/23	124	739	1829
Tain Royal Academy	2021/22	153	823	1657
Virtual Comparator	2021/22	137	774	1885

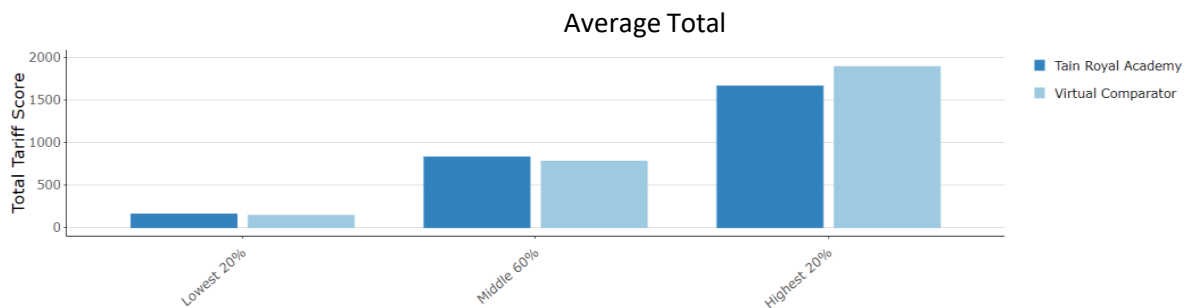
9.3 2023/24



9.4 2022/23



9.5 2021/22



9.6 Pupil Destinations 16+

Leaver destination information is taken from the School Leaver Destination data collected by Skills Development Scotland (SDS) on behalf of the Scottish Government.

	% Positive Destinations		
	2021/22	2022/23	2023/24
Tain Royal Academy	94.81	91.59	95.19
Highland	94.45	95.27	96.5
Scotland	95.74	95.87	95.71

9.6.1 Number of pupils leaving in school year:

	Tain Royal Academy	HIGHLAND	SCOTLAND
2021/22	77	2559	55211
2022/23	107	2474	54719
2023/24	104	2629	55961

9.6.2 Destination of pupils (%):

	Tain Royal Academy			HIGHLAND			SCOTLAND		
DESTINATION	21/22	22/23	23/24	21/22	22/23	23/24	21/22	22/23	23/24
Higher Education	33.76	36.45	32.69	34.11	33.1	32.07	41.27	40.3	40.8
Further Education	12.98	16.82	15.38	19.54	20.53	20.39	25.45	26.62	26.43
Training	3.89	0.93	0.96	1.52	1.9	3.04	2.91	3.35	3.89
Employment	42.85	37.38	46.15	38.73	39.05	40.4	25.12	24.34	23.08
Voluntary	1.29	0	0	0.31	0.53	0.42	0.47	0.52	0.58
Activity Agreements	0	0	0	0	0	0	0	0	0
Unemployed Seeking	5.19	4.67	3.85	2.89	2.95	2.05	2.32	2.24	2.16
Unemployed Not Seeking	0	3.74	0.96	1.76	1.62	1.45	1.55	1.57	1.86
Unknown	0	0	0	0.9	0.16	0	0.4	0.32	0.27

Note: National averages have been calculated from the figures for all available local authority and grant-aided schools, whereas the local authority averages are based on local authority schools only.

Designation: Assistant Chief Executive - People

Date: 12 January 2026

Author: Isobel Sinclair – Area Quality Improvement Manager, N4 (AQIM)

Background Notes:

- (For all figures marked with "C")
c = value suppressed to protect against the risk of disclosure of personal information
- All data used within this report comes from the most recently published source.

Appendices: n/a