

The Highland Council

| | |
|-------------|-----------|
| Agenda Item | 12 |
| Report No | ECI/21/26 |

Committee: Economy and Infrastructure

Date: 28 May 2026

Report Title: Community Regeneration Fund – Allocation of HCCF Tranche 7 and CRF Review

Report By: Assistant Chief Executive - Place

1 Purpose/Executive Summary

- 1.1 This report seeks agreement to distribute tranche 7 of the Scottish Crown Estate Net Revenue payment 2025-26 (Highland Coastal Communities Fund) to local area committees using the same allocation formula as applied by the Community Regeneration Fund (CRF) Strategic Sub Group in February 2025.
- 1.2 At the CRF Strategic Sub Group in April 2025, it was agreed that the distribution of tranche 7 would be agreed by E&I Committee.
- 1.3 A brochure highlighting key projects supported by the CRF Programme between 2022 and 2025 can be viewed within Appendix 2 of this report. A full breakdown of all projects to benefit from grant funding can be viewed within Appendix 3.

2 Recommendations

- 2.1 Members are asked to:-
 - i. **Consider** and **agree** the Scottish Crown Estate Net Revenue allocation to local area committees as set out within Appendix 1; and
 - ii. **Note** the CRF Brochure attached within Appendix 2 and the full list of funded projects within Appendix 3.

3 Implications

- 3.1 **Resource** – Tranche 7 Highland Coastal Communities Funding (HCCF) of £3,886,450.43 has been received by Highland Council. This relates to Scottish Crown Estate Net Revenues generated in the financial year 2025/26.

Members may wish to note that this is the only funding source that will be available to Area Committees through the CRF programme in 2026/27 as the Scottish Government have paused ring-fenced capital grant awards to local authorities from the Place Based Investment Programme (PBIP).

- 3.2 **Legal** - When managing external funding it is imperative that the risks to The Highland Council are assessed/mitigated and any back-to-back grant award letters with third parties, and financial claims management protect The Highland Council financial and reputational interests
- 3.3 **Risk** - A balanced approach to risk is adopted when disbursing grant funds as sometimes it is necessary if a community-based project is to proceed, to forward grant payment. Factors such as past knowledge of and project experience of the grant recipient; release of funds linked to invoices/works completion certificates etc. are considered in such assessments.
- 3.4 **Health and Safety (risks arising from changes to plant, equipment, process, or people)** – No risks arising directly from this report. Risks within projects are identified and managed on a project-by-project basis by the applicant organisation
- 3.5 **Gaelic** - Consideration given within individual project applications in line with the Council's policy.

4 Impacts

- 4.1 In Highland, all policies, strategies or service changes are subject to an integrated screening for impact for Equalities, Poverty and Human Rights, Children's Rights and Wellbeing, Climate Change, Islands and Mainland Rural Communities, and Data Protection. Where identified as required, a full impact assessment will be undertaken.
- 4.2 Considering impacts is a core part of the decision-making process and needs to inform the decision-making process. When taking any decision, Members must give due regard to the findings of any assessment.
- 4.3 A separate screening for impact for each application is not required, however consideration of impacts for equalities, socio-economic impact and consideration of the impact on the individual community is part of the assessment criteria and included within the assessment report. This supports the decision-making process.

5 Background

- 5.1 Highland Council receives an annual allocation of funding from the Scottish Government based on a Scottish Government formula to distribute the net revenues of the Crown Estate. Within Highland this funding is delivered as the Highland Coastal Communities Fund (HCCF), under the umbrella term of Community Regeneration Funding (CRF).
- 5.2 This paper sets out a distribution calculation identical to that agreed by the CRF Strategic Sub Group for tranches 5 and 6 of HCCF. This includes a £50k de minimis uplift to four local area committees, which otherwise would stand to receive less than £12k each. Members should be aware that in the absence of a Scottish Government Place Based Investment award for 2026/27, the only fund available for distribution to Area Committees for community regeneration is the Scottish Crown Estate Net Revenue allocation.

5.3 In addition to the Area Committee allocations, the ongoing availability of strategic funding will ensure that priority projects as identified in Area Place Plans across Highland can be taken forward as they reach a point of requiring “last brick funding” and are ready for delivery. This is particularly critical given the lack of other capital funds available to communities during this year.

6 CRF 2022 – 2025

6.1 Community Regeneration Funding brings several local funding programmes together under one clear, practical approach, managed by Highland Council on behalf of the Scottish and UK Governments. It is a simple idea, but one that has made a noticeable difference. Communities now have a clearer view of what support is available and how to access it, without having to navigate a complicated mix of separate funds. At the same time, the Council benefits from a more joined-up and consistent way of managing investment.

6.2 Between 2022 and 2025, the CRF team supported 410 projects across Highland, drawing on funding from programmes such as the Highland Coastal Communities Fund, Place Based Investment Programme, UK Shared Prosperity Fund, Community Led Local Development, the Regeneration Capital Grant Fund, and the Islands Programme. Together, these programmes directed £18.3 million into local communities. Based on the costs set out at application stage, those projects are expected to generate more than £50m in total investment, reflecting the scale of impact that this coordinated approach to regeneration can deliver.

6.3 A brochure setting out the fund’s achievements, along with a selection of local case studies, is included for Members within **Appendix 2**. A full list of funded projects is provided separately within **Appendix 3**.

Together, these examples give a clear and balanced picture of the regeneration activity taking place across the Highlands. They highlight both the scale of investment and the variety of projects being delivered, as well as the positive changes being made within communities. Each project is built on strong working relationships between local communities, third-sector organisations and public bodies, with a shared focus on improving quality of life, supporting local economies and creating opportunities for the future. Taken as a whole, they demonstrate what can be achieved when strong local ideas are supported by flexible funding and a collaborative approach.

Designation: Assistant Chief Executive - Place

Date: 28 April 2006

Author: Fiona Cameron, CRF Programme Manager
Alan Webster, Service Lead, Economic Development & Regeneration

Background Papers: None

Appendices: Appendix 1 – Distribution of funding
Appendix 2 – CRF Brochure
Appendix 3 – CRF Projects 2022 - 2025

Appendix 1: Distribution of Funding

| | | % Share | Strategic | Allocation |
|--------------------------------------|---------------|---------|-------------|--------------|
| Badenoch & Strathspey | | 0 | | £50,000.00 * |
| Inverness | | 0.47 | | £61,759.40 * |
| Dingwall & Seaforth | | 0.08 | | £52,001.60 * |
| Black Isle & Easter Ross | | 4.96 | | £124,099.15 |
| Nairn | | 0.47 | | £61,759.40 * |
| Wester Ross, Strathpeffer & Lochalsh | | 13.47 | | £337,019.28 |
| Lochaber | | 17.91 | | £448,108.04 |
| Skye & Raasay | | 19.6 | | £490,391.82 |
| Sutherland | | 27.15 | | £679,292.75 |
| Caithness | | 15.88 | | £397,317.45 |
| Strategic | | | £522,967.56 | |
| | | | | |
| Total Allocation | £3,886,450.43 | | | |
| Corporate Saving | £400,000.00 | | | |
| Strategic (15%) | £522,967.56 | | | |
| Admin (7.5%) | £261,483.78 | | | |

**Includes £50k de minimis uplift*



Fund Statistics



Total Funding Awarded
£18,309,471.59

Overall Leveraged Funding
£50,382,081.99

Average Award Level
£33,542.03



Funding Awarded

| | | |
|---|----------------------|--|
| Badenoch & Strathspey | £341,253.89 | |
| Black Isle & Easter Ross | £1,317,803.47 | |
| Caithness | £1,406,511.64 | |
| Dingwall & Seaforth | £237,115.98 | |
| Inverness | £1,358,004.24 | |
| Lochaber | £1,783,609.85 | |
| Nairn | £416,415.03 | |
| Skye & Raasay | £1,696,283.84 | |
| Sutherland | £2,367,347.25 | |
| Wester Ross, Strathpeffer & Lochalsh | £1,186,278.36 | |
| Strategic | £1,306,190.04 | |
| Scottish Government Regeneration Capital Grants Fund | £3,322,500.00 | |
| Scottish Government Islands Programme | £1,570,158.00 | |

Total Number of Projects Supported
410

Approved Projects by Category

| | |
|---------------------------|----|
| Arts & Heritage | 24 |
| Community Hubs | 55 |
| Development Officer/Staff | 24 |
| Energy Efficiency | 12 |
| Environmental Initiatives | 16 |
| Footpaths & Trails | 16 |
| Harbours & Piers | 5 |
| Housing & Accommodation | 13 |
| Outdoor Community Space | 19 |
| Place Plans | 18 |
| Planning & Development | 58 |
| Playpark | 17 |
| Public Toilets | 13 |
| Small Grants Scheme | 5 |
| Social & Support Services | 37 |
| Sports & Leisure | 29 |
| Transport | 13 |
| Visitor Infrastructure | 22 |

Kingussie and Vicinity Community Council – Regeneration of the Glebe Ponds



This project completed the third phase of work at the Glebe Ponds Regeneration Project in Kingussie. The work included the upgrading of 500 metres of path network to allow safe and increased access for young balance bikers, parents with prams and those requiring mobility aids such as walkers and wheelchairs. “The fund has allowed groups and individuals to come together in Kingussie to bring a much loved but underused space back to life.” **Janet Kinnaid, Kingussie and Vicinity Community Council.**



Project Costs: **£41,095.56**

CRF Award: **£31,095.60**

Black Isle

Black Isle Cares – Sustainability and Development



Black Isle Cares is a community charity that works with mainly older adults and people who feel isolated or disconnected within their local communities in the Black Isle area. The CRF project aimed to develop future strategies, secure funding, develop new and existing services and encourage volunteer development. *“This funding came at the perfect time for us. It has been an excellent and much needed opportunity to focus on our sustainability and future developments. We’ve been able to update our volunteering policies and procedures, consult widely on general awareness of Black Isle Cares and because of the findings improve awareness of our services and activities. We now have a better social media presence and a re-brand as well as joining the Highland Climate Change Hub to take part in their Sustainable Place programme. The regeneration funding activity has given us clarity and focus for future Black Isle Cares priorities.”* **Anne McDonald, Black Isle Cares**

Project Costs: **£10,000.00**

CRF Award: **£10,000.00**



Avoch Community Rowing Club – Provision of a boatshed and workshop

This ambitious community project in Avoch took a piece of vacant industrial land and created a fabulous all-weather facility for the community rowing club. The project focussed on creating a space to store the boats properly, more rowing opportunities for underrepresented groups, improved access to facilities and increased diversity in the membership. “We are very proud of what we have achieved in the building of this excellent local facility. The response from the local community has been truly overwhelming and we believe that despite the difficult financial situation the country is in, that by pulling together as a community, we have given hope and belief that great things can be achieved, even in small, rural communities. We have received excellent support from the team administering the fund too. **Kathy Taylor, Avoch Community Rowing Club**

| | |
|----------------|--------------------|
| Project Costs: | £203,317.00 |
| CRF Award: | £78,460.49 |

Cromarty & Resolis Film Society - Improving Cinema Accessibility



The level of interest and demand for the cinema in Cromarty exceeded original estimates and as a result, the temporary car park, which was also used regularly by locals and visitors, received a significantly higher volume of traffic than expected. The project enhanced the physical facilities (external parking and signage, internal safety barriers) and improved accessibility and safety for cinema and community visitors who utilise the cinema parking lot. “The project impact has been immediate, with members of the community being incredibly appreciative of the improved car park and our audience with disabilities expressing how their experience has improved and how the changes make them feel like valued members. Without CRF support we would have been unable to undertake the project, and the ongoing support of the team at the Highland Council has been excellent.” **Tanya Karlebach, Cromarty and Resolis Film Society**

Project Costs: **£40,815.00**

CRF Award: **£39,815.00**

Culbokie Community Trust – Culbokie Village Hub Toilets & Potting Shed



This was an ambitious project to build new public toilets and a small volunteer base / tool shed – affectionately called the ‘potting shed’. The toilets and potting shed are part of a bigger community-led project, the Glascairn Community Project, which is transforming the village centre on land, owned by the Culbokie Community Trust (CCT). A new greenspace, Culbokie Green has already been created – with meadows, paths, seating, a natural play area, a community orchard, a timber shelter and outdoor table tennis. “CCT is extremely grateful to the CRF for funding the project. This has enabled CCT to create a public toilet with 3 unisex cubicles, a cubicle for disabled access, a cubicle for the café staff and a dedicated baby-changing facility. These facilities will be of enormous benefit to community groups, volunteers, people enjoying Culbokie Green including the natural play areas and visitors to Culbokie whether using the EV Chargers or passing through on the John O’ Groats Trail.” **Paul Wadge, Culbokie Community Trust**

Project Costs: **£148,968.30**

CRF Award: **£30,000.00**



Caithness

Wick Development Trust - Wick River Campsite Phase 2

Wick Development Trust successfully completed Phase 2 of the Wick River Campsite re-development, delivering a new modern state of the art toilet block and facilities building. The aim was to upgrade campsite amenities to attract more visitors, encourage longer stays, create jobs and boost local economic activity. The new building opened in June 2024 to overwhelmingly positive visitor feedback. The campsite has continued to go from strength to strength with visitor numbers increasing year on year, benefiting the Trusts operations, the local community through re-investment of profits and local businesses vested in the tourist economy. Sustainability was central to the design, incorporating solar panels, battery storage, air source heat pumps, and other energy-efficient initiatives.

Project Costs: **£465,214.24**

CRF Award: **£90,000.00**

Thurso Community Café – Helping Hub

Thurso Community Café launched the Clothing Helping Hub to tackle poverty and reduce waste by repurposing donated clothing and household items. Completed in August 2025 at a cost of £39,520, the project transformed an unused building into a welcoming shop and hub, supporting over 300 households and creating two part-time jobs alongside 20 regular volunteers. The initiative promotes recycling, upcycling, and community engagement while collaborating with local schools, UHI, and charities. *“The clothing hub has been highly successful. The café has regenerated an old unused space into a hub of activity for the town to enjoy.”* **Ann Brock, Director, Thurso Community Café**

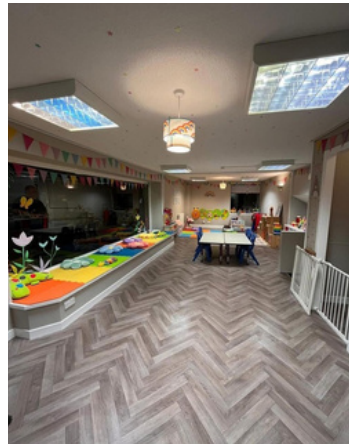


Project Costs: **£39,520.00**

CRF Award: **£27,520.00**

Home Start Caithness – Family Hub

Home Start Caithness used CRF funding to cover staff costs, enabling the Hub to deliver essential family support across the region. The project assisted 658 families, engaged 17 volunteers, and built strong links with 10 local organisations. Through parenting guidance, workshops, and practical resources, the Hub helped reduce isolation and ease financial pressures. Volunteers also gained confidence and skills, with some moving into employment. *“We’ve empowered families, reduced isolation, and fostered resilience within the community. We’re incredibly grateful for this support, it’s allowed us to grow our impact and create lasting change.”* **Fiona Carlisle, Home Start Caithness**



Project Costs: **£70,547.00**

CRF Award: **£68,142.00**

John O’Groats Mill Trust– Refurbishment of John O’Groats Mill



The John O’Groats Mill Trust has brought one of Scotland’s most northerly heritage landmarks back to life, transforming a long-abandoned water-powered mill into a vibrant community hub and visitor attraction. After decades of deterioration, the community-led Mill Trust secured a £4.9m funding package to rescue the B-listed building, preserve its rare intact machinery, and create new public spaces. The mill reopened in May 2025 to local celebration, with hundreds attending events, milling demonstrations, film screenings, and family activities. It now offers museum interpretation, hands-on heritage experiences, a small shop, workshops, and year-round programming that connects residents and visitors alike.

Project Costs: **£4,645,228.00**

CRF Award: **£1,550,000.00** Inc. RCGF

Wick Community Hub – Sensory Space at Wick Community Hub



Wick Community Hub transformed an unused storage area into a fully equipped Sensory Space. The facility now supports 55 individuals with specific needs and 32 families, offering a safe, calming environment for neurodivergent children and young people. Specialist equipment such as bubble tubes, infinity mirrors, and fibre-optic lighting helps reduce sensory overload and anxiety. Parents report the space has been “a game-changer,” reducing isolation and eliminating costly travel to Inverness for similar facilities. “For the first time, children and young people with neurodivergence have a safe, welcoming environment to explore, relax, and regulate their sensory needs. Parents now have a vital support network, and the whole community has become more inclusive and understanding. This project has truly made a difference” **Cameron Reid, Wick Community Hub**

Project Costs: **£19,085.98**

CRF Award: **£19,071.25**

Dingwall & Seaforth

Highlife Highland Youth Development Dingwall – Dingwall Youth Club Access & Engage Project



The youth development project provided consistent, youth-led activities for young people across the Dingwall. With 96 regular participants, the project offered drop-in sessions, wellbeing activities, leadership awards and opportunities to engage with local services. Young people grew in confidence, built friendships, and developed skills through sports, arts, digital activities and volunteering. THC Youth Development demonstrated strong commitment to empowering young people and providing safe, accessible spaces that promote wellbeing, inclusion and long-term engagement. “The Community Regeneration Fund has provided significant support to young people in the Dingwall ASG by enabling them to access regular youth club sessions in their local community where they can take part in a range of activities that they have selected and that will positively impact on their mental health and wellbeing, reduce social isolation and loneliness and lead to positive destinations.” **Julia McGhee, Highlife Highland**

Project Costs: **£9,646.00**

CRF Award: **£3,138.48**

Maryburgh Amenities – Community Hall Upgrade

Maryburgh Amenities project focused on improving the hall's heating and lighting systems, transforming it into a more energy-efficient, welcoming, and accessible space for residents and groups. The enhanced facilities have enabled the hall to operate as a warm, well-lit community hub, supporting a wide range of activities and services. The improvements also contribute to environmental goals by installing modern, energy-efficient heating and lighting. "The grant allowed MAC to improve heating and lighting, making a warm hall available for groups to rent - not just from Maryburgh, but the surrounding area too."

Donald Stuart, Maryburgh Amenities Company



Project Costs: **£15,204.00**

CRF Award: **£12,707.00**

Peffery Way Association – Peffery Way Dingwall Exit Section

The Peffery Way is a community-led initiative that has already delivered 5.4km of a planned 6km active travel route. The new section between Dingwall and Strathpeffer removes previous access barriers, enabling unobstructed use of the path from Dingwall to Fodderty Cemetery. This has significantly increased usage by both locals and visitors, promoting physical activity, wellbeing, and social connection. "We are extremely grateful to The Highland Council for their support... which allowed us to construct this section of the Peffery Way. We look forward to the whole 6km being completely unobstructed and having all-abilities access."

Ian Searle, Peffery Way Association



Project Costs: **£29,500.00**

CRF Award: **£29,078.98**

Maryburgh Men's Shed – Replacement Windows



The Maryburgh Men's Shed successfully completed an upgrade to its community facility in March 2024, replacing old, inefficient windows and doors with modern, energy-efficient alternatives. This project has transformed the Old School building into a warmer, safer, and more inviting space for members and the wider community. The improvements have already led to increased membership and interest from other local groups keen to use the space. The enhanced environment supports the Shed's mission to reduce social isolation, promote wellbeing, and foster community spirit through creative, purposeful, and recreational activities. "CRF has helped us greatly in improving our community charity, Maryburgh Men's Shed, making a huge difference to our community and helping to revive the heart of the village."

Andrew Barness, Maryburgh Men's Shed

Project Costs: **£26,500.00**

CRF Award: **£11,500.00**

Easter Ross

Inver Football Club – Osprey Park Community Sports Facility

A newly built facilities hut offers accessible toilet and kitchen facilities, improving match day experiences and enabling the space to host a wider range of community events. The project had 30 volunteers contributing their time and skills to bring the vision to life. Local companies donated materials, reinforcing the community's commitment to the facility's success. "CRF has allowed our small, rural community to realise a dream which has long been talked about and has given an opportunity to bring the community together to build something we can all be proud of." **Paul Connolly, Inver Football Club**



Project Costs: **£9,199.99**

CRF Award: **£9,199.99**

Tain & District Bike Track Association – Tain Bike Track Re-Build

The Tain Bike Track Re-Build project revitalised the Alexandra Bridge Bike Track into a vibrant, accessible community asset. Its central location has encouraged widespread use by residents and visitors, and also generated positive economic effects, increasing footfall for nearby cafés, shops, and services. Community pride has grown, with volunteers actively contributing to maintenance and improvements. "We are incredibly proud of what the Alexandra Bridge Bike Track rebuild has delivered—an active, welcoming space that strengthens our community and reflects the dedication and spirit of everyone involved." **Alan Mohan, Tain & District Bike Track Association CIC**



Project Costs: **£60,940.00**

CRF Award: **£20,440.00**

Seaboard Community Polytunnel Group – Fixtures & Fittings



To compliment a wider programme of works, the project installed new picnic benches, wheelchair-accessible tables, and replaced unsafe seating. It also upgraded 12 recycled planters, enhancing the area's visual appeal and longevity. Key outcomes included improved services for young people, wellbeing initiatives, and increased social connectivity. Six garden beds were made available for community use, supporting volunteering and interaction. The project strengthened local assets and the Polytunnel now serves as a welcoming hub for locals and visitors. This encourages relaxation and social engagement, and feedback highlights the project's positive impact on accessibility and aesthetics in the area. "The support given by the CRF Team has been invaluable, and if we were in any doubt we always felt at ease to ask." **Norma Balfour, Seaboard Community Polytunnel Group CIC.**

Project Costs: **£9,354.72**

CRF Award: **£9,000.00**



The Place Youth Club – The Place Drop In/ The Field

Acting as a vital support hub for the wider community in Alness, The Place Youth Club has evolved far beyond its original role as a youth provision. CRF funding was used to employ a new Senior Youth Worker to cope with growing demands on the service. The targeted support has led to improved school attendance, reduced challenging behaviours, and increased engagement. Food provision was central, ensuring young people received at least one hot meal daily. The Place is helping to shift generational mindsets around mental health, addiction, and deprivation. The impact is already visible, and the legacy of this work will continue to grow. “Being a recipient of CRF had a huge impact on the work delivered with local young people within our community.” **Janette Douglas, The Place Youth Club**

Project Costs: **£42,840.00**

CRF Award: **£42,840.00**

Inverness-shire

The Ledge SCIO – The Ledge



The Ledge SCIO completed its £1.46 million pound project in April 2023, creating a world-class indoor climbing facility in Inverness with support from CRF. The centre provides affordable access to sport and wellbeing activities, targeting young people, those experiencing trauma, and individuals with mental health challenges. Since opening, the Ledge team have partnered with schools, Police Scotland, and Highland Hospice to provide inclusive programs. The project created 24 jobs, hosted several specialist training courses, and offers mentoring and informal mental health support in a safe, inclusive environment. Environmental sustainability was a priority, with LED lighting, heat recovery systems, and FSC-certified materials reducing carbon impact. “The Ledge has become a positive addition to the area, offering low-cost access to sport, mentoring, and informal mental health support while reinvigorating a commercial space and boosting local employment” **Alasdair Lawton, Director, The Ledge**

Project Costs: **£1,459,431.00**

CRF Award: **£100,000.00**

Knocknagael – Knocknagael Green Hub



This project aims to transform the ‘smiddy field’ into a vibrant community asset featuring 130 allotments, a community orchard, biodiversity areas and training spaces. Funding enabled essential technical planning, archaeological surveys, and detailed designs to progress to the planning application stage. Community engagement was central, with events including: school archaeology visits, an apple grafting workshop, a harvest picnic, and a consultation attended by over 60 residents. The hub will promote food growing, reduce food miles, and enhance biodiversity across 8.3 hectares of green space. “Funding has been critical to move the project forward and take a step closer to making a new community asset with allotments and green space a reality.” **Maria de la Torre, Chairperson, Knocknagael**

Project Costs: **£68,791.91**

CRF Award: **£68,791.91**

Stratherrick & Foyers Community Trust – Improved Pathways

Two priority routes linking Whitebridge to Foyers and Foyers to Inverfarigaig were upgraded, improving access to essential services and creating safer, off-road connections. The improvements form part of the South Loch Ness Trail, and encourages walking and cycling as sustainable, low-carbon transport options. “Thanks to CRF, and superb work by local volunteers driving the project, we’ve successfully completed pathway improvements which will make walking off road between local villages a better experience and has improved the quality of the South Loch Ness Trail, which combined with the Great Glen Way, forms the Loch Ness 360 route.” **Sharon Ferguson, Stratherrick & Foyers Community Trust**



Project Costs: **£24,834.00**

CRF Award: **£20,000.00**

The Highland Council – Whin Park Refurbishment

Whin Park play area in Inverness reopened on April 2025, after a major three-month refurbishment to create a fully inclusive and interactive space for children of all ages and abilities, supporting the Highland Council’s Playpark Strategy to promote accessibility and outdoor activity. New features include an interactive Nessie sculpture, Legend Seeker Playship, swing zone, birds’ nest climbing frame, adventure mound with tube slide and scramble net, and the Highlands’ first Sona dance-and-play audio arch. These additions encourage physical play, creativity and social interaction in a safe, welcoming environment. This transformation delivers a vibrant, accessible space for families across Inverness.



Project Costs: **£492,395.01**

CRF Award: **£102,407.01**

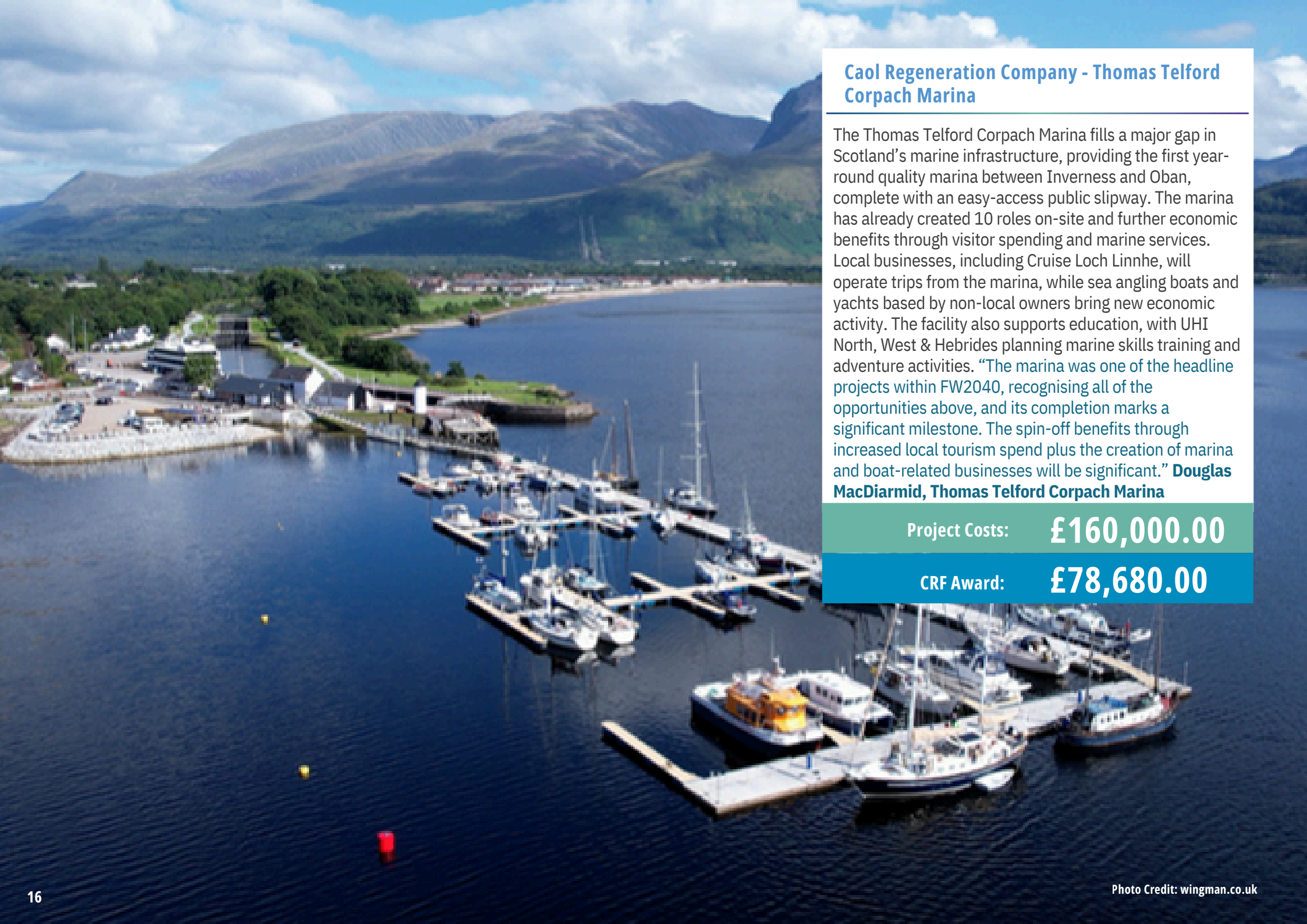
Lochaber Lochaber Hope – New Connections



Lochaber Hope’s “New Connections” project has become a vital community hub, offering a safe, inclusive, and welcoming space for people of all ages and backgrounds. The centre now hosts a wide range of community-led groups - from toddler events and youth mentoring to autism support, creative writing, and wellbeing workshops. It has delivered over 100 new activities and initiatives, including 24 youth programmes, 14 family events, 8 wellbeing initiatives, and 22 social connection projects. The project has also laid the groundwork for a community-run café, designed to provide training opportunities for those facing barriers to employment, including young people and long-term unemployed individuals. “It is without any doubt that I say that the funding we received through the Community Regeneration Fund meant our project, New Connections, absolutely thrived this last year. We had so much support and encouragement and we have made a difference - such a difference - to our local community, thanks to this funding.” **Doreen Mackenzie, Lochaber Hope**

Project Costs: **£101,000.00**

CRF Award: **£56,000.00**



Caol Regeneration Company - Thomas Telford Corpach Marina

The Thomas Telford Corpach Marina fills a major gap in Scotland's marine infrastructure, providing the first year-round quality marina between Inverness and Oban, complete with an easy-access public slipway. The marina has already created 10 roles on-site and further economic benefits through visitor spending and marine services. Local businesses, including Cruise Loch Linnhe, will operate trips from the marina, while sea angling boats and yachts based by non-local owners bring new economic activity. The facility also supports education, with UHI North, West & Hebrides planning marine skills training and adventure activities. "The marina was one of the headline projects within FW2040, recognising all of the opportunities above, and its completion marks a significant milestone. The spin-off benefits through increased local tourism spend plus the creation of marina and boat-related businesses will be significant." **Douglas MacDiarmid, Thomas Telford Corpach Marina**

Project Costs: **£160,000.00**

CRF Award: **£78,680.00**

Knoydart Farm CIC – Knoydart Farm Work Package

CRF funding enabled new infrastructure, including a polytunnel, strengthening local food production in Knoydart. This cuts food miles, improves access to affordable fresh produce, and promotes sustainable practices. Community engagement has been strong, with school visits, apple grafting, and volunteering involving over 50% of residents, supporting cost-of-living relief, biodiversity, and future employment through training. “CRF has allowed us to accelerate a transformational change to the food system of Knoydart. We will now no longer rely on unsustainable imports and eventually support employment as well as community education in food sovereignty.” **Ben Nunn, Knoydart Farm CIC**



Project Costs: **£57,900.00**

CRF Award: **£29,025.00**

Urram SCIO – Electric Community Car Share & Transport Service

Urram accessed CRF to purchase an electric car and install a charging point in Strontian, safeguarding its vital medical transport service. The project enables access to hospital appointments, social groups, and community lunches, CRF also supported the Transport Co-ordinator salary costs. “We are delighted to get our car club idea off the ground and build capacity for our transport service all in one project. We know the transport service is a lifeline for many. We are looking forward to hearing more stories about how the car club is helping families in remote and rural areas cope with limited public transport and stay connected with the things that are important to them.” **Louise White, Urram SCIO**



Project Costs: **£64,750.00**

CRF Award: **£63,748.00**

Fort William Marina & Shoreline CIC – New Toilet Block



Fort William Marina & Shoreline Community Interest Company applied to CRF to install and manage new toilets and an office near the West End Car Park. This new facility will serve cruise ship passengers, yacht visitors, coach tours, and locals, providing essential amenities such as toilets and showers close to the pontoons. The project strengthens tourism infrastructure, encouraging visitors to stay longer and spend more in Fort William. “We were delighted to be supported by the CRF with our project to install a container housing an office and toilets in the West End Car Park. This is a great facility that will enable locals and visitors alike to improve their experience of visiting our wee town and hopefully encourage them to dwell longer and thus improve the economy of Fort William and the surrounding area.” **Sarah Kennedy, Fort William Marina & Shoreline CIC**

Project Costs: **£158,368.48**

CRF Award: **£84,292.21**



Nairn

TeamHamish – Nairn Links Regeneration Phase 2

Using CRF to match fund significant local fundraising efforts, Team Hamish has transformed a previously underused area of Nairn into a vibrant, inclusive social gathering space. With a tiered outdoor seating arena, new lighting, pathways and benches, the space now hosts musical performances, outdoor education, and gatherings for people of all ages. “Since completion, we have seen so much wonderful social activity taking place in this new space, by people of all ages and abilities. From those just meandering, sitting, and appreciating the views over the Moray Firth, to informal musical performances and busking with singers, pianists, acoustic groups, and even a samba band, all which adds so much animation to the area. With the assistance of the Community Regeneration Fund, we have been able to build on the incredible generosity of the community to our fundraising efforts to deliver a project that offers a real benefit to both residents and visitors, creating a lasting and sustainable legacy in memory of Hamish and Susan.” **Sam Hey, NICE**

Project Costs: **£286,659.41**

CRF Award: **£78,622.88**

Nairn Community Transport – Purchase of New Minibus

Nairn Community Transport (NCT) purchased a new accessible minibus to expand and sustain vital transport services across Nairnshire. Covering an area of 520km², the service connects communities like Auldearn, Cawdor, Croy and Ardersier, and serves over 85 user groups including youth clubs, sports teams, senior citizens, and local schools. The new vehicle will ensure safe, accessible travel for all, especially those with mobility challenges. "Nairn Community Transport can assist all groups and include all communities. Our vehicles are specifically designed and equipped to cope with disabled and less mobile passengers and to transport wheelchairs and similar aids." **Michael J Mitchell, Nairn Community Transport**



Project Costs: **£59,462.00**

CRF Award: **£44,500.00**

Nairn Community & Arts Centre – Environment & Energy Sustainability

To improve energy efficiency, the Centre installed Wi-Fi enabled radiator valves for smarter heating control, along with destratification units in the main hall to circulate warm air more effectively, and PIR sensors throughout the building to ensure lighting is only used when needed. These practical upgrades are expected to significantly reduce electricity consumption, lower utility bills, and shrink the Centre's carbon footprint by an estimated 3.7 tonnes of CO₂ each year. "This project is the next step in our journey to Net Zero and will significantly reduce reliance on fossil fuels as well as addressing the impact that utility costs have on the Centre's finances." **Michael J Mitchell, Nairn Community & Arts Centre**



Project Costs: **£35,983.44**

CRF Award: **£35,802.80**

Nairn Museum – Renovating the Galleries of Nairn Museum



The Exhibiting Nairnshire project focused on updating exhibition layouts and installing new interpretation panels. Over 80 community members contributed ideas through engagement activities, shaping the final design and ensuring the museum reflects local voices and heritage. A previously underutilised space now hosts exhibitions by local artists, and new connections with Nairn Academy have already boosted educational engagement. This transformative renovation has not only enhanced the visitor experience but laid the groundwork for future funding opportunities and long-term sustainability of the museum. "This renovation has been a game changer for Nairn Museum. It's made our exhibitions more engaging, strengthened our ties with the community, and created new opportunities for local schools and visitors to connect with Nairnshire's heritage. Thanks to this funding, we're in a stronger position to grow, welcome more people through our doors, and ensure the museum remains at the heart of the community for years to come." **Ann MacDonald, Nairn Museum**

Project Costs: **£15,172.00**

CRF Award: **£15,172.00**

Skye & Raasay

Radio Skye – Cultural Journalist Pilot Programme Extension



The Radio Skye Cultural Journalist Pilot project enabled the station to employ a full-time cultural journalist, significantly enhancing local news coverage and community engagement. The role expanded hourly news bulletins from 8am to 9pm, introduced feature pieces, Q&A sessions, and live discussions, giving residents timely access to local issues such as the Skye National Park debate, Portree Hospital reopening, and renewable energy proposals. The journalist also organised community hustings, mentored young presenters, and covered cultural, sports, and charitable events across Skye. This initiative strengthened local democracy, improved access to information, and boosted confidence in community media. “CRF funding allowed us to experiment with the parameters of the post and see how we could most effectively deliver more local news to the area along with being leaders in stories that mean the most to people.” **Suzy Lee, Radio Skye**

Project Costs: **£28,081.00**

CRF Award: **£14,081.00**

Dunvegan Community Trust – Dunvegan Community Park

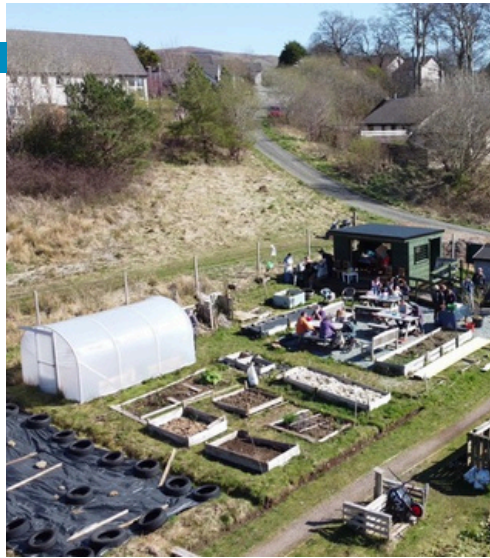


The Lochside Play Area in Dunvegan Community Park is a well-loved community asset that suffered from a gradual decline due to years of limited investment. Dunvegan Community Trust took the lead on upgrading the facility, with input from the community and the local children for the design and transformed it into a modern and inclusive green space. The new play area provides a safe and interactive environment for families and young people. “This project is the result of years of hard work from local volunteers around Dunvegan, who wanted to ensure the next generation have the facilities they deserve, to enjoy their childhoods and feel valued by their community. This would not have been possible without the support of the UKSP and CRF funds, the corporate sponsorship received, and the generous donations of time, money and services from local people and businesses.” **Amalia MacLennan, Dunvegan Community Trust**

Project Costs: **£165,489.72**

CRF Award: **£37,500.00**

Portree & Braes Community Trust – Home Farm Hub



The Home Farm Hub project has provided a lively community space, complete with allotments, polytunnels, a purpose-built summer house, solar panels, and a composting toilet. The site supports a wide range of food-growing, wellbeing, and social activities, from seed swaps and Gaelic growing sessions to Junior Forester training. Schools, charities, and local groups regularly use the hub for hands-on learning and therapeutic gardening. “CRF has allowed us to provide the local area with a community space for food growing and education for all ages and backgrounds.” **Alec McLeod, Portree & Braes Community Trust**



Project Costs: **£64,470.97**

CRF Award: **£64,138.66**

Broadford & Strath Community Company – Skye Event Space



The Skye Event Space project completed a decade-long community vision to develop a multifunctional hub within the community woodland. The new 40m x 40m outdoor space expands opportunities for local events, arts activities, youth engagement and seasonal gatherings, while also supporting practical learning for Portree High School pupils through ongoing landscaping work. The project significantly boosts the local economy through the expanded campsite, which recorded 1,257 additional campervan bookings in its first partial season and is expected to grow further. “The Skye Event Space project has created an exciting new community space. As well as being used for community events it will also provide much needed “overflow” spaces for visiting campervans. The management of the Skye Event Space will be facilitated by the community-owned Camping Skye, ensuring that all revenue generated will stay within the community, supporting community aspirations, building resilience and ultimately reducing reliance on grant funding.” **Jeffrey Geary, Broadford & Strath Community Company**

Project Costs: **£123,590.38**

CRF Award: **£49,590.38**

Sutherland

Dornoch Area Community Interest Company – MUGA



The Dornoch Area Community Interest Company (DACIC) has transformed a long derelict brownfield site into a vibrant multi use games area (MUGA), providing a high-quality sports facility in the heart of the town. Opened in April 2024, the MUGA offers tennis, pickleball, basketball and football, with coaching, social sessions and an online booking system enabling easy access for residents and visitors. The project has strengthened community cohesion by linking newcomers and long-term residents, increased local physical activity and created new opportunities for young people through free coaching. By revitalising a central site and enhancing local amenities, DACIC has delivered a significant community asset that supports wellbeing, sport, tourism and long-term regeneration for Dornoch. **“The project has transformed a derelict site in the centre of town into an attractive well used sports facility.” Luke Watson, Dornoch Area Community Interest Company**

Project Costs: **£217,265.81**

CRF Award: **£63,896.00**

Lairg and District Community Initiatives – Ferrycroft Playpark Development



In response to a long-standing community need, Lairg & District Community Initiatives led the redevelopment of the Ferrycroft Playpark, transforming a disused site into a vibrant, inclusive recreational space. The project was a collaborative effort involving Highland Council, Lairg Community Council, local parents, and children who helped select the equipment. The playpark is expected to boost footfall at the Ferrycroft Visitor Centre and surrounding businesses, supporting local tourism and sustainability. The opening event, attended by around 70 children, highlighted the park’s immediate positive impact. Feedback from pupils and staff was overwhelmingly enthusiastic, with children expressing joy and gratitude for the new facilities. **“The children thoroughly enjoyed the opening of the park, and I am sure it will be well used. They loved being involved in choosing the equipment. We want to thank all the people who made it possible.” Lesley Morrison, Lairg and Rosehall Primary**

Project Costs: **£115,116.09**

CRF Award: **£60,000.00**



Highland Council – Achmelvich Carpark

This transformative £1.06 million infrastructure upgrade at Achmelvich Bay addressed long-standing issues of inadequate parking and sanitation at one of the North Coast 500’s most popular destinations, enhancing both visitor experience and environmental protection.

The development included a formalised car park with 80+ spaces, including accessible bays, and a modern toilet block featuring five WCs, an accessible toilet, baby changing, and outdoor showers. These improvements replaced outdated, over-capacity facilities and a poorly maintained sand-based car park prone to potholes. The project supports the local economy by improving infrastructure for tourism, which is vital to the area. It enhances community resilience by reducing pressure on local services and providing a cleaner, safer and more welcoming environment for both residents and visitors.



| | |
|----------------|----------------------|
| Project Costs: | £1,063,426.31 |
| CRF Award: | £60,000.00 |

Historylinks Museum – Museum Extension

This project delivered a new Heritage Hub, strengthening the museum’s role as a community and cultural centre. Shaped by local demand, the extension includes a community room, new exhibition spaces, and improved heritage storage. It supports activities such as the Young Curators’ Club, heritage craft workshops, and community-led exhibitions including Made in Dornoch. The space has already attracted local bookings, including Dornoch Fibre Fest, and is expected to increase annual visitors by 20% to over 6,000. “The CRF grant helped Historylinks turn an empty space into a community place!” **Jerry Bishop, Dornoch Historylinks**



Project Costs: **£401,319.04**

CRF Award: **£50,000.00**

Assynt Development Trust – Clashnessie Falls

The Assynt Development Trust upgraded the footpath to Clashnessie Falls, improving access while protecting the environment. The path is expected to attract around 4,500 visitors annually, supporting the local economy. It also boosts climate resilience by preventing peatland damage and is estimated to save 42 tonnes of CO₂ each year, supporting net zero ambitions. “We are grateful for the support of Community Regeneration Fund in enabling the Clashnessie Falls footpath to be upgraded, protecting the route and its surroundings from damage from continuing increased use, and ensuring high quality access to this beautiful location into the future.” **Adam Pellant, Assynt Development Trust**



Project Costs: **£52,473.60**

CRF Award: **£25,800.00**

Wester Ross, Strathpether & Lochalsh

Aultbea Hall - Aultbea Hall Revival – Phase2



Aultbea Hall Revival project set out to restore a historic World War II Romney building, closed since 2018, into a vibrant community hub. Renovations included structural repairs, new doors, floors, ceilings, and energy-efficient heating and lighting, alongside improved drainage and accessible parking. The hall now offers versatile spaces for nursery and school activities, youth clubs, sports, drama, and music, as well as family celebrations and cultural events. “Aultbea Hall Revival! is delighted to celebrate the reopening of our long-loved and much missed historic community venue, after several years of closure. The repair and renovation work undertaken since 2022 was made possible by the unremitting efforts of our contractors, volunteer helpers, fundraisers, donors and committee members.” **Pauline Butler, Aultbea Hall Committee**

Project Costs: **£82,161.56**

CRF Award: **£50,595.00**

Strathpeffer Residents Association – Strathpeffer Community Park

The completion of the Strathpeffer Community Park has created a much-needed recreational space for the village. The investment funded new play areas and infrastructure designed to provide safe, accessible outdoor facilities for families and young people. Located centrally, the park will offer opportunities for active play, social gatherings, and community events, reducing reliance on distant amenities. “We believe this provides a constructive outlet for the young people of the local and wider areas. This should also increase the foot fall within the village, in turn generating an economic benefit to the village.” **Gavin Scott, Strathpeffer Residents Association**



Project Costs: **£86,119.82**

CRF Award: **£59,335.00**

Strathpeffer Community Development Trust – Community Shop

Strathpeffer Community Shop initiative established a sustainable, community-owned shop promoting local produce, refill stations, and eco-friendly practices to reduce waste and carbon emissions. The shop has created two part-time jobs and provided work experience opportunities for vulnerable residents, fostering inclusion and skills development. “The funding from the CRF has made a significant difference, it’s enabled us to establish a really valuable community resource and, most importantly, to offer employment locally.” **Miranda Wharam, Strathpeffer Community Development Trust**



Project Costs: **£24,028.55**

CRF Award: **£11,935.55**

Torricon District Community Association – Improving Access to Local Services



This initiative delivered two key outcomes: a Local Services Information Pack in English and Gaelic for 270 households, and a Community Recycling Hub at Loch Torricon Community Centre. The pack consolidates essential service details - health, transport, library, and food delivery - making them easier to access and helping sustain local provision. The Recycling Hub tackles landfill waste and long travel distances by collecting items like batteries, small electricals, and pill packs, with volunteers transporting materials to larger centres. “We are thrilled to have received Community Regeneration Funding to allow us to take meaningful, local steps to address our carbon footprint and tackle the climate crisis.” **Katie Anderson, Torricon District Community Association**

Project Costs: **£17,175.00**

CRF Award: **£16,675.00**



Kinlochewe Village Hall – Bouldering Wall

Kinlochewe Hall completed its Bouldering Wall project in November 2024, creating a modern climbing facility offering routes for all abilities, from beginners to experts, with volunteer climbers assisting in route setting. The wall quickly began attracting locals and surrounding communities, with twice-weekly supervised sessions for children, families, and adults, plus private bookings. The project enhances wellbeing, encourages active lifestyles, and provides a new income stream for the hall, helping sustain other activities like arts, music, and social events. “This project, together with the simultaneous refurbishment of the toilet facilities, is an investment in the long-term viability of the hall and its place as a focal point for the community. Most people walk in and go ‘Wow!’. Thank you to the Community Regeneration Fund for giving Kinlochewe Village Hall the “wow” factor.” **Graham Phillips, Kinlochewe Village Hall**

Project Costs: **£51,004.24**

CRF Award: **£25,000.00**

| Area | Organisation | Project Description | Total Project Costs (at application stage) | | £ Total grant approved |
|-----------------------|---|---|--|------------|------------------------|
| Badenoch & Strathspey | Aviemore & Glenmore Community Trust | Legal fees to support Community Asset Transfer and new disabled access door system | £ | 23,435.00 | £ 14,869.56 |
| Badenoch & Strathspey | Aviemore Community Enterprise Company Ltd | Refurbishment of Burnside Playpark in Aviemore | £ | 116,746.46 | £ 80,823.02 |
| Badenoch & Strathspey | Carrbridge Community Orchard | To make the orchard more accessible, enjoyable, and educational for everyone | £ | 8,250.00 | £ 5,899.43 |
| Badenoch & Strathspey | Dalwhinnie Community Development Trust | Insulate the hall and install a low carbon, energy efficient heating system | £ | 27,718.80 | £ 27,595.62 |
| Badenoch & Strathspey | Grantown Initiative | Replacement roof lights and internal redecoration following repair | £ | 4,435.20 | £ 4,435.20 |
| Badenoch & Strathspey | Kingussie and Vicinity Community Council | Upgrade 500 metres of path network including level access | £ | 41,095.20 | £ 31,095.60 |
| Badenoch & Strathspey | Kingussie Camanachd Club | Restoration of the playing surface and installation of floodlighting to enable year-round use | £ | 71,837.00 | £ 43,675.46 |
| Badenoch & Strathspey | Kingussie Tennis Club | To install new blaes courts and irrigation system and a new electronic access gate | £ | 24,154.00 | £ 17,860.00 |
| Badenoch & Strathspey | Newtonmore Playpark Upgrade | Refurbishment of Newtonmore Playpark to offer children and families a safe, stimulating place to play | £ | 97,254.06 | £ 30,000.00 |
| Badenoch & Strathspey | Newtonmore Village Hall | Upgrading the fire alarm system in Newtonmore Village Hall | £ | 18,250.00 | £ 5,000.00 |
| Badenoch & Strathspey | The Highland Council | Upgrade of the unused subway under the C1126 road to provide a safe pedestrian link | £ | 80,000.00 | £ 80,000.00 |
| Black Isle | Avoch Community Rowing Club | New community boat shed | £ | 158,169.00 | £ 34,460.49 |
| Black Isle | Avoch Community Rowing Club | New community boat shed | £ | 158,169.00 | £ 44,000.00 |
| Black Isle | Black Isle Cares | Development of future plan to secure funding, develop new and existing services and volunteer development | £ | 10,000.00 | £ 10,000.00 |
| Black Isle | Cromarty and Resolis Film Society | Improve accessibility and safety for cinema users and community visitors | £ | 40,815.00 | £ 35,815.00 |
| Black Isle | Cromarty and Resolis Film Society | Short term funding for training, volunteer events and salary costs | £ | 10,100.00 | £ 7,850.00 |
| Black Isle | Cromarty Harbour Trust | Consultancy work to determine costings for capital works to repair/conserv the East Pier | £ | 5,500.00 | £ 5,500.00 |
| Black Isle | Cromarty Harbour Trust | Feasibility study to consider the options in relation to works on the west pier | £ | 9,500.00 | £ 7,500.00 |
| Black Isle | Culbokie Community Trust | Essential ground works and landscaping to prepare the site for future community development | £ | 34,965.00 | £ 29,625.49 |
| Black Isle | Culbokie Community Trust | Professional fees to take project to planning and building warrant stage | £ | 20,371.00 | £ 15,278.00 |
| Black Isle | Culbokie Community Trust | Professional fees to take project to tender | £ | 14,280.00 | £ 9,836.00 |
| Black Isle | Culbokie Community Trust | Construction of a new building to incorporate a public toilet and volunteer base/ potting shed | £ | 193,242.16 | £ 100,000.00 |
| Black Isle | Culbokie Community Trust | Construction of a new building to incorporate a public toilet and volunteer base/ potting shed | £ | 193,242.16 | £ 30,000.00 |
| Black Isle | Culbokie Community Trust | Ground works and landscaping to prepare the site for future community development | £ | 34,965.00 | £ 19,984.64 |
| Black Isle | Ferintosh Community Hall | Repair and insulation of external walls to improve thermal performance | £ | 30,216.00 | £ 30,216.00 |
| Black Isle | Ferintosh Community Hall | New insulated roof for Ferintosh Community Hall | £ | 37,785.86 | £ 37,785.86 |
| Black Isle | Killearnan Public Hall | Replacement of lights, heaters and the fire exit door with modern alternatives | £ | 10,000.00 | £ 9,642.97 |
| Black Isle | Killearnan Public Hall | Feasibility study to inform plans to transform the hall into a modern community hub | £ | 24,000.00 | £ 24,000.00 |
| Black Isle | North Kessock Village Hall | Continuation of the Warm Spaces programme | £ | 7,400.00 | £ 7,400.00 |
| Black Isle | North Kessock Village Hall | Upgrade of toilets at village hall | £ | 99,686.72 | £ 66,637.17 |

| | | | | | | |
|------------|---|--|---|--------------|---|--------------|
| Black Isle | North Kessock Village Hall | New external doors and access ramp to make building accessible to all | £ | 26,879.50 | £ | 24,879.50 |
| Black Isle | The Black Isle Partnership | First phase of implementation of the Black Isle Place Plan | £ | 32,000.00 | £ | 30,000.00 |
| Black Isle | Victoria Hall Management Committee | Feasibility study towards installing renewable heating systems | £ | 33,000.00 | £ | 3,000.00 |
| Caithness | Association of Northern Trails Scotland | Staff costs to employ a Development Officer to develop a North Coast trail and improve the JOG trail | £ | 40,000.00 | £ | 20,000.00 |
| Caithness | Association of Northern Trails Scotland | Path works to deal with erosion on the JOG trail | £ | 14,292.00 | £ | 8,000.00 |
| Caithness | Caithness KLICS | Young carers organisation support for staff costs | £ | 21,344.00 | £ | 11,244.80 |
| Caithness | Caithness KLICS | Young carers organisation support for staff costs | £ | 19,954.00 | £ | 19,954.00 |
| Caithness | Caithness Mental Health Support Group | Deputy manager recruitment and consultancy fees for test of change project | £ | 83,900.00 | £ | 55,900.00 |
| Caithness | Caithness Mental Health Support Group | Pilot provision of later opening on Friday and weekend opening of centres | £ | 27,923.00 | £ | 22,293.18 |
| Caithness | Caithness Voluntary Group | Employment of two development officers alongside HIE funding for two years | £ | 133,378.00 | £ | 42,533.00 |
| Caithness | Dunbeath & District Centre | Further development work towards constructing a new community wellbeing hub | £ | 56,919.34 | £ | 21,981.00 |
| Caithness | Dunbeath & District Centre | Development phase work towards construction of community wellbeing hub | £ | 6,672.00 | £ | 6,672.00 |
| Caithness | Dunbeath Community Centre | Installation of a new community playpark in Dunbeath | £ | 136,440.66 | £ | 28,940.66 |
| Caithness | Friends of the North Baths | Repairs to historic outdoor salt water swimming pool | £ | 17,330.00 | £ | 17,330.00 |
| Caithness | High Life Highland Youth Development Thurso | Staff costs to support youth activities for young people in Thurso | £ | 29,831.00 | £ | 29,831.00 |
| Caithness | Highlife Highland | Provision of winter programme of youth activities in Thurso | £ | 26,170.00 | £ | 15,597.00 |
| Caithness | Home Start Caithness | Staff cost support | £ | 97,796.00 | £ | 3,615.00 |
| Caithness | Home Start Caithness | Purchase of organisation's base and repair and refurbishment costs to improve the facility | £ | 70,547.00 | £ | 68,142.00 |
| Caithness | Home Start Caithness | Employment of a volunteer co-ordinator to recruit and support volunteers | £ | 47,485.00 | £ | 41,485.00 |
| Caithness | John O' Groats Development Trust | Toilet refurbishments including new accessible facility, new external doors and generator connection | £ | 54,360.40 | £ | 25,000.00 |
| Caithness | John O'Groats Mill Trust | Refurbishment of a B listed historic former watermill to provide a community asset and heritage visitor attraction | £ | 4,847,802.00 | £ | 50,000.00 |
| Caithness | John O'Groats Mill Trust | Conservation and repair of an historic Mill into a new visitor attraction and community venue | £ | 4,847,802.00 | £ | 1,500,000.00 |
| Caithness | Keiss Amenities Association | Replacement lighting system for Keiss Hall | £ | 11,349.60 | £ | 11,349.60 |
| Caithness | Lyth Arts Centre | Provision of arts based wellbeing initiatives to reduce isolation and improve mental health | £ | 85,000.00 | £ | 25,000.00 |
| Caithness | Old St. Peter's Kirk Preservation Association | Site investigation and studies working towards restoration and stabilisation works of ruined kirk | £ | 11,160.00 | £ | 9,000.00 |
| Caithness | Pennyland School Parent Council | Creation of a new active travel path including planting for a nature area | £ | 60,380.60 | £ | 39,380.60 |
| Caithness | Pentland Firth Yacht Club | Replacement of guard boat to provide safety vessel during club activities | £ | 21,995.00 | £ | 11,995.00 |
| Caithness | Pentland Firth Yacht Club | New fleet of sailing craft for training | £ | 43,224.45 | £ | 22,000.00 |
| Caithness | Pultneytown People's Project | Employability support services including job coaching | £ | 52,586.65 | £ | 24,080.85 |
| Caithness | Reay Golf Club | Construction of new building to house both greenkeeping equipment and coaching facilities | £ | 233,690.00 | £ | 75,000.00 |
| Caithness | Reay Hall | Various improvements centred on accessibility to community hall | £ | 155,603.00 | £ | 58,000.00 |
| Caithness | Sinclair's Bay Trust | Provision of new community noticeboards | £ | 6,096.30 | £ | 3,096.30 |
| Caithness | Staxigoe & Papigoe Community Group | Improvements to village hall energy efficiency with insulation, heat pump and LED lighting | £ | 205,403.45 | £ | 41,267.07 |
| Caithness | Staxigoe Community Football Pitch | Improvements to community sports pitch including aeration and overseeding | £ | 36,307.00 | £ | 36,307.00 |

| | | | | | | |
|---------------------|--|---|---|--------------|---|------------|
| Caithness | Staxigoe Community Football Pitch | Works to provide a new access, parking, space for storage and extension of the current pitch | £ | 61,851.00 | £ | 33,871.00 |
| Caithness | The Highland Council | Project to reduce traffic speeds and improve footways near Wick Riverside parking and bus terminal | £ | 68,000.00 | £ | 50,000.00 |
| Caithness | The Highland Council | Refurbishment of Whitechapel Lane toilets in Wick | £ | 420,000.00 | £ | 134,098.41 |
| Caithness | Thrumster Community Development Association | Refurbishment of recent community acquisition of the village tennis court | £ | 28,500.64 | £ | 9,500.22 |
| Caithness | Thurso Community Cafe | Establishment of a preloved clothing shop and clothing bank | £ | 39,520.00 | £ | 27,520.00 |
| Caithness | Thurso Youth Club | Refurbishment of youth club toilet facilities | £ | 39,978.00 | £ | 39,860.00 |
| Caithness | Thurso Youth Club | Refurbishment of youth club cloakroom area and construction of a new accessible toilet and storage area | £ | 93,690.00 | £ | 60,000.00 |
| Caithness | Thurso Youth Club | Youth outreach programme in Thurso | £ | 6,318.00 | £ | 6,318.00 |
| Caithness | Wick Amateur Swimming Club | Purchase of new swim start blocks for community sports association | £ | 16,919.82 | £ | 16,006.00 |
| Caithness | Wick Community Hub | Creation of a sensory room for young people with neurodivergent support needs | £ | 19,085.98 | £ | 19,071.25 |
| Caithness | Wick Development Trust | Design, development and consent works for final phase of community campsite redevelopment | £ | 43,390.00 | £ | 35,327.80 |
| Caithness | Wick Development Trust | Infrastructure improvement works to community owned campsite in Wick | £ | 55,700.04 | £ | 39,943.90 |
| Caithness | Wick Development Trust | Construction of new facilities block in community owned campsite | £ | 450,837.64 | £ | 90,000.00 |
| Dingwall & Seaforth | HighLife Highland Youth Development Dingwall | A dedicated youth club for vulnerable people in Dingwall to have access to a safe space | £ | 9,646.00 | £ | 8,830.00 |
| Dingwall & Seaforth | Maryburgh Amenities Company | Upgrading and remedial works to the Maryburgh Amenities Centre | £ | 15,204.00 | £ | 12,707.00 |
| Dingwall & Seaforth | Maryburgh Men's Shed | To improve the insulation of the Men's Shed and save energy costs by replacing the windows | £ | 26,500.00 | £ | 11,500.00 |
| Dingwall & Seaforth | Peffery Way Association | Completion of the Dingwall end of the Peffery Way route | £ | 29,500.00 | £ | 29,078.98 |
| Dingwall & Seaforth | The Highland Council | Provide like for like repairs to the monument to bring it back to safety standards | £ | 341,422.97 | £ | 175,000.00 |
| Easter Ross | Balintore & District Residents Group | Salary costs for youth workers for the Balintore Youth Programme | £ | 16,383.00 | £ | 16,383.00 |
| Easter Ross | Befrienders Highland | Staffing costs for co-ordinator to recruit and train volunteers for mental health befriending service | £ | 241,609.00 | £ | 36,084.00 |
| Easter Ross | CCAST Highland | Part-time officer to work on a range of projects on the Mansfield estate | £ | 29,638.18 | £ | 25,087.99 |
| Easter Ross | Evanton Community Trust | Project Manager to take forward existing projects and develop new projects, consulting local community | £ | 28,860.00 | £ | 28,860.00 |
| Easter Ross | Evanton Community Trust | Fund raising consultant to apply to funding bodies for grants to re develop a village hall | £ | 5,000.00 | £ | 5,000.00 |
| Easter Ross | Evanton Social & Event Group | Supporting isolated elderly people over winter, with social lunches, home-delivered meals, and visits | £ | 10,000.00 | £ | 9,000.00 |
| Easter Ross | Fearn Amenities | Architect drawings and planning application to re-develop Fearn playing-field pavilion into a community hub | £ | 5,000.00 | £ | 5,000.00 |
| Easter Ross | Fearn Amenities | Feasibility and business plan for possible community asset purchase of Fearn Abbey | £ | 20,640.00 | £ | 20,640.00 |
| Easter Ross | Fearn Amenities | Electrical and water connections, engineer's fees to inspect the existing structure and new roof trusses | £ | 12,006.19 | £ | 12,006.19 |
| Easter Ross | For You Training | Establishment of a Community Innovation campus delivering training in sustainable food production | £ | 1,584,504.00 | £ | 450,000.00 |

| | | | | | | |
|-----------------|---|--|---|--------------|---|------------|
| Easter Ross | Fox and Friends Highland | Costs of two new support workers and one new admin and charity development worker | £ | 31,680.00 | £ | 30,000.00 |
| Easter Ross | Inver Football Club | Replacement of perimeter fence, and construction of storage shed with toilets and hand washing facilities | £ | 14,400.00 | £ | 9,199.99 |
| Easter Ross | Inver Hall | Upgrade of outdated and inaccessible toilet facilities in Inver Hall | £ | 15,858.00 | £ | 14,858.00 |
| Easter Ross | Milton Community Woodland Trust | Repair and upgrade of Milton Woodland paths, making them accessible for all | £ | 29,750.00 | £ | 28,750.00 |
| Easter Ross | Ross Sutherland RFC | Install new kitchen, soundproof venue, add partition for smaller events, and upgrade PA system | £ | 25,000.00 | £ | 25,000.00 |
| Easter Ross | Royal British Legion Scotland, Invergordon Branch | Internal refurbishment works to improve the hall and reduce energy costs | £ | 28,310.80 | £ | 18,011.18 |
| Easter Ross | Seaboard Memorial Hall | Three new stone village entrance signs with a themed Seaboard Fulmars logo | £ | 49,403.00 | £ | 43,643.00 |
| Easter Ross | Seaboard Memorial Hall Ltd | Repairs and maintenance of local sculpture trail and removal of fire hazard whin bushes | £ | 6,000.00 | £ | 5,300.00 |
| Easter Ross | Seaboard Memorial Hall Ltd | Pre-planning costs and range of landscaping works in Balintore | £ | 32,600.00 | £ | 27,600.00 |
| Easter Ross | Seaboard Polytunnel Group CIC | Replacement broken community flower tubs and benches. New polytunnel fencing, water bowser and market cart | £ | 9,200.00 | £ | 9,000.00 |
| Easter Ross | Tain & District Bike Track Association CIC | Funding to employ track designer to expand the Alexandra Bridge Bike Track | £ | 60,940.00 | £ | 20,440.00 |
| Easter Ross | Tain & District Development Trust | Feasibility study and implementation plan for a network of paths and cycle ways across Easter Ross | £ | 31,680.00 | £ | 31,680.00 |
| Easter Ross | Tain & Fearn Free Church | Demolition and site clearance, as 1st Phase of new build church and hall | £ | 76,075.00 | £ | 46,000.00 |
| Easter Ross | Tain Heritage Trust | Phased internal refurbishment works to restore Tain Picture House for public use | £ | 151,259.00 | £ | 54,131.00 |
| Easter Ross | Tain Heritage Trust | Phased internal refurbishment works to restore Tain Picture House for public use | £ | 119,121.00 | £ | 65,000.00 |
| Easter Ross | Tain Heritage Trust | Youth work and improving youth work practice in rural communities | £ | 20,000.00 | £ | 20,000.00 |
| Easter Ross | Tain Initiative Group | Development officer, to take forward options for the development of a specific site in Tain | £ | 37,000.00 | £ | 33,000.00 |
| Easter Ross | Tain Youth Café YMCA | Youth development workers including supporting young mums and running holiday programmes for families in Tain | £ | 131,679.00 | £ | 42,243.00 |
| Easter Ross | The Alness Partnership | Project Manager to produce Community Action and Resilience plan, through community engagement and consultation | £ | 23,132.00 | £ | 9,635.00 |
| Easter Ross | The Place Youth Club | New senior youth worker to cope with growing demand for services provided by Youth Club | £ | 137,136.00 | £ | 42,840.00 |
| Inverness-shire | Community Action Raigmore Estate | Purchase of a building to run weekly coffee mornings for adults and children's activities in school holidays | £ | 30,000.00 | £ | 20,000.00 |
| Inverness-shire | Crown Connects | Community initiatives to welcome Ukrainian refugees and introduce them to the local community | £ | 11,130.00 | £ | 4,251.67 |
| Inverness-shire | Dalneigh Play Park Project | Re-development of Dalneigh Play Park | £ | 76,324.95 | £ | 55,205.61 |
| Inverness-shire | Inverness YMCA | Installation of a new lift to ensure access for all | £ | 17,000.00 | £ | 17,000.00 |
| Inverness-shire | Lovat Shinty Club | Playpark upgrade, and creation of new green space for community use along with installation of floodlighting | £ | 200,000.00 | £ | 146,261.21 |
| Inverness-shire | South Kessock Residents Association | Purchase of play equipment to establish new play park in South Kessock | £ | 110,000.00 | £ | 55,000.00 |
| Inverness-shire | Stratherrick & Foyers Community Trust | Purchase and installation of 3 polycrubs for community growing projects | £ | 22,000.00 | £ | 10,595.00 |
| Inverness-shire | Stratherrick & Foyers Community Trust | Maintenance and improved access to pathways connecting to Foyers | £ | 24,024.00 | £ | 20,000.00 |
| Inverness-shire | The Elsie Normington Foundation | Construction of the Haven Centre to provide respite and play centre for children and young people with support needs | £ | 4,648,769.30 | £ | 80,669.30 |

| | | | | | | |
|-----------------|--|---|---|--------------|---|------------|
| Inverness-shire | The Highland Council | Re-furnishment of public toilets at Whin Park | £ | 700,000.00 | £ | 65,776.05 |
| Inverness-shire | The Ledge | Capital build of new climbing wall & bouldering performance centre | £ | 1,459,431.00 | £ | 100,000.00 |
| Inverness-shire | Velocity Cafe and Bicycle Workshop | To purchase equipment for the Mums on Wheels initiative | £ | 8,670.00 | £ | 7,610.00 |
| Inverness-shire | 2nd Inverness Scout Group | Insulate the scout group hall to improve energy efficiency | £ | 45,643.19 | £ | 36,514.55 |
| Inverness-shire | Cultarlann Inbhir Nis | Introduce energy improvement measures including roof insulation | £ | 98,588.00 | £ | 90,000.00 |
| Inverness-shire | Eden Court Highlands | A series of energy efficiency improvements including insulation | £ | 78,000.00 | £ | 58,500.00 |
| Inverness-shire | Free North Church | To undertake urgent repairs to stonework to preserve the building for community use | £ | 165,000.00 | £ | 40,000.00 |
| Inverness-shire | Inverness Caledonian Thistle Community Developme | To create a new accessible teaching/workshop space | £ | 513,500.00 | £ | 50,000.00 |
| Inverness-shire | Inverness Sea Cadets | A series of building renovations to preserve the use of the building as a community hub | £ | 50,000.00 | £ | 50,000.00 |
| Inverness-shire | Inverness Sea Cadets | Professional fees for feasibility study and design options for the current Sea Cadets building | £ | 25,200.00 | £ | 5,268.00 |
| Inverness-shire | Inverness Wheeled Sports Club | Options appraisal of potential Inverness sites for wheeled sports | £ | 9,987.00 | £ | 9,987.00 |
| Inverness-shire | Knocknagael | Design stage of development of sites into a green hub including allotments, orchard and outdoor community areas | £ | 68,791.91 | £ | 68,791.91 |
| Inverness-shire | Merkinch Partnership | To provide advice and support services for people experiencing poverty and disadvantage | £ | 102,300.00 | £ | 25,000.00 |
| Inverness-shire | The Highland Council | Playpark upgrade at Whin Park | £ | 492,395.21 | £ | 102,407.01 |
| Inverness-shire | The Ledge | To install heat pumps and upgrade ventilation system | £ | 82,885.00 | £ | 58,380.23 |
| Inverness-shire | Abriachan Forest Trust | A feasibility study into the wider benefits of a toilet block, bike wash area and retail/workshop space | £ | 12,050.00 | £ | 9,950.00 |
| Inverness-shire | Beauly Shinty Club | Improve the Beauly Shinty Club facilities by installing fencing and pedestrian gates | £ | 27,696.00 | £ | 27,696.00 |
| Inverness-shire | Glen Urquhart Men's Shed Group | Refurbish and renovate currently disused premises to provide office space, kitchen and workshop | £ | 20,000.00 | £ | 10,000.00 |
| Inverness-shire | Glen Urquhart Rural Community Association | Demolition of unsafe part of the building as part of wider transformation plans | £ | 24,000.00 | £ | 23,000.00 |
| Inverness-shire | Glen Urquhart Rural Community Association | Redevelopment and remodelling of a public hall into a thriving, energy efficient community hub | £ | 1,580,187.00 | £ | 602,500.00 |
| Inverness-shire | Glenurquhart Care Project | Upgrade of facilities including flooring, furniture and outdoor food growing areas | £ | 59,152.00 | £ | 30,202.00 |
| Inverness-shire | RSPB Scotland | To rehabilitate land damaged by wildfires through tree planting and natural grazing | £ | 77,251.70 | £ | 57,938.70 |
| Inverness-shire | Stratherick & Foyers Community Trust | Refurbishment of toilets at the Wildside centre | £ | 42,300.00 | £ | 22,000.00 |
| Lochaber | Acharacle Community Company | Employment of a development officer to identify and deliver regeneration projects in the area | £ | 37,760.00 | £ | 34,760.00 |
| Lochaber | Ardgour Glensanda Development Trust | Recruitment of development officer to progress the objectives of the Ardgour Place Plan | £ | 23,994.20 | £ | 15,613.79 |
| Lochaber | Arisaig Community Trust | Support for staffing and operational costs for a local community trust | £ | 38,559.03 | £ | 17,108.00 |
| Lochaber | Arisaig Community Trust | Professional fees for the development phase of an affordable housing project | £ | 1,552,860.00 | £ | 27,940.59 |
| Lochaber | Arisaig Community Trust | Feasibility study to determine viability of community buy out of Arisaig Church and adjoining hall | £ | 15,804.30 | £ | 15,804.30 |
| Lochaber | Arisaig Community Trust | Re-surfacing and marking of carpark in Arisaig, which is heavily used by visitors | £ | 25,450.86 | £ | 13,999.83 |
| Lochaber | Caol Community Council | Consultancy fees to produce a local place plan for Caol | £ | 8,280.00 | £ | 8,289.60 |
| Lochaber | Caol Regeneration Company Ltd | One year's support for operating costs for senior citizens lunch club | £ | 10,322.85 | £ | 7,322.85 |
| Lochaber | Caol Regeneration Company Ltd | Support for capital costs to construct a new marina facility | £ | 160,000.00 | £ | 115,000.00 |

| | | | | | | |
|----------|--|--|---|------------|---|------------|
| Lochaber | Care Lochaber | One year's support for operating costs of a community car scheme | £ | 10,000.00 | £ | 10,000.00 |
| Lochaber | Communities Housing Trust | Professional fees for the development phase of an affordable housing project | £ | 94,490.00 | £ | 94,490.00 |
| Lochaber | Eigg Trading Ltd | Conversion of former agricultural building into business units and a coastguard emergency services base | £ | 310,000.00 | £ | 50,000.00 |
| Lochaber | Eigg Trading Ltd | Purchase and installation of composter, for commercial and residential food waste on Isle of Eigg | £ | 8,802.00 | £ | 8,800.41 |
| Lochaber | Fort William Marina & Shoreline Community Interest | Construction costs for new toilet block in West End Car Park in Fort William | £ | 84,292.21 | £ | 84,292.21 |
| Lochaber | Fort William Town Team | Solar panels to power lights and charge a water bowser to water plants in town | £ | 11,362.80 | £ | 9,469.00 |
| Lochaber | Glencoe Folk Museum | Professional fees to support the re-development of Glencoe Folk Museum | £ | 121,250.00 | £ | 50,000.00 |
| Lochaber | Glengarry Community Woodlands | Support for cost of constructing woodland cabins to secure a sustainable income stream | £ | 511,795.00 | £ | 106,795.00 |
| Lochaber | Glenuig Community Association | Feasibility study on the buy out of Glenuig Inn for developing into a community hub | £ | 10,296.00 | £ | 10,296.00 |
| Lochaber | Green Fingers | Support for reconstruction costs for a community garden project that suffered storm damage | £ | 20,423.00 | £ | 20,423.00 |
| Lochaber | HighLife Highland Youth Development Ardnamurchar | Community art sessions and outdoor Learning Programme for young people who have additional support needs | £ | 11,428.00 | £ | 11,428.00 |
| Lochaber | Isle of Canna Community Development Trust | Professional fees for development phase to create a community owned mixed use facility | £ | 100,700.00 | £ | 25,000.00 |
| Lochaber | Isle of Canna Community Development Trust | Support for professional fees associated with the ongoing project to re-develop Corroghan Barn | £ | 80,262.00 | £ | 13,764.00 |
| Lochaber | Isle of Eigg Heritage Trust | Installation of new energy-efficient windows and doors in eight homes to improve energy efficiency | £ | 46,934.00 | £ | 25,000.00 |
| Lochaber | Isle of Eigg Heritage Trust | Construction of two new homes for social rent on Isle of Eigg | £ | 759,256.00 | £ | 100,000.00 |
| Lochaber | Isle of Eigg Heritage Trust | Upgrade of Old Surgery house to create additional accommodation for visiting contractors to the island | £ | 34,743.00 | £ | 25,000.00 |
| Lochaber | Isle of Eigg Heritage Trust | Feasibility study of possible conversion of existing bothy into one bedroom home for social rent | £ | 10,016.00 | £ | 6,416.00 |
| Lochaber | Isle of Eigg Heritage Trust | To employ consultant to produce a crofting development plan for the Isle of Eigg | £ | 15,000.00 | £ | 14,000.00 |
| Lochaber | Isle of Eigg Heritage Trust | Establishing electricity and water supply to two new community-owned affordable rent homes | £ | 96,505.00 | £ | 72,000.00 |
| Lochaber | Isle of Muck Community Enterprise Ltd | Professional fees for the development phase of an affordable housing project | £ | 30,000.00 | £ | 28,500.00 |
| Lochaber | Kinlochleven Community Trust | To employ a Development Officer to take forward local priority projects | £ | 26,522.00 | £ | 26,522.00 |
| Lochaber | Kinlochleven Community Trust | Roofing repairs to restore building to a condition whereby it can be leased and generate income | £ | 42,850.00 | £ | 23,215.00 |
| Lochaber | Knoydart Farm CIC | Support for set up costs for community farm, including electric quad bike, trailer and polytunnels | £ | 57,900.00 | £ | 29,025.00 |
| Lochaber | Knoydart Foundation | Creation of flexible worker accommodation on the remote peninsula of Knoydart | £ | 961,848.00 | £ | 560,000.00 |
| Lochaber | Linnhe Leisure Limited | Essential roof repairs and internal refurbishment works at local multi-use facility | £ | 98,840.00 | £ | 76,840.00 |
| Lochaber | Lochaber Action on Disability | Fitting of replacement kitchen and purchase of new kitchen equipment at community café | £ | 17,189.34 | £ | 17,189.34 |
| Lochaber | Lochaber Hope | Two new posts- project manager and project worker, to expand service provision | £ | 101,000.00 | £ | 56,000.00 |
| Lochaber | Lochaber Music School | Support for staffing costs at local music school | £ | 14,800.00 | £ | 10,000.00 |

| | | | | | | |
|----------|---|---|---|------------|---|------------|
| Lochaber | Lochaber Rural Education Trust | Purchase of mini bus to be shared between local shinty club and rural education trust | £ | 40,000.00 | £ | 32,000.00 |
| Lochaber | Mallaig & Morar Community Centre Association | Kitchen equipment purchase and upgrade of kitchen facilities within Mallaig and Morar Community Centre | £ | 6,400.56 | £ | 5,760.56 |
| Lochaber | Mallaig Community Hub and Shop | Support for rent and overhead costs while premises are converted into new community shop | £ | 10,750.00 | £ | 10,750.00 |
| Lochaber | Morvern Community Woodlands | Feasibility study on area of land to determine viability of creation of new woodland crofts | £ | 24,792.00 | £ | 24,792.00 |
| Lochaber | Morvern Heritage Society | Creation of new footpath/ heritage trail highlighting the history of Lochaline Sandmine | £ | 35,884.00 | £ | 24,601.40 |
| Lochaber | Morvern Watersports Club | Purchase of rescue/safety boat, trailer and paddlesport equipment, for local watersports club | £ | 15,194.27 | £ | 13,878.84 |
| Lochaber | Nevis Community Radio Ltd | One year of support for staffing costs at local radio station | £ | 15,584.00 | £ | 13,559.00 |
| Lochaber | Road to the Isles Facilities Group | Costs for contractors to undertake a range of repairs and maintenance on local visitor facilities | £ | 29,500.00 | £ | 26,500.00 |
| Lochaber | Road to the Isles Facilities Group on behalf of Mallaig | Second phase of footpath construction to create a new circular walking route | £ | 45,718.40 | £ | 34,618.40 |
| Lochaber | Shielbridge Hall | Installation of new fire alarm system in Shielbridge Hall | £ | 7,664.44 | £ | 8,464.85 |
| Lochaber | Shielbridge Hall Committee | Technical study looking at roof replacement and options for a range of energy efficiency measures | £ | 9,532.50 | £ | 9,532.50 |
| Lochaber | Shopmobility Lochaber | Support for one year's salary for office co-ordinator for shop mobility project | £ | 29,120.00 | £ | 12,000.00 |
| Lochaber | Spean Bridge, Roy Bridge & Achnacarry | Professional fees as part of wider proposal to develop affordable housing and flexible business space | £ | 42,690.00 | £ | 19,690.00 |
| Lochaber | The Buzz Project | One year of support for staffing costs at local youth support project | £ | 22,156.09 | £ | 19,194.55 |
| Lochaber | The Highland Council | Paving and cobblestone repairs, and installation of new bollards to control vehicular access | £ | 58,000.00 | £ | 58,000.00 |
| Lochaber | The Knoydart Foundation | Site set up costs as part of wider construction works | £ | 62,000.00 | £ | 62,000.00 |
| Lochaber | The National Trust for Scotland | Provision of out of hours toilet in car park at NTS visitor centre at Glenfinnan | £ | 48,500.00 | £ | 36,000.00 |
| Lochaber | The National Trust for Scotland | Redevelopment of a former coal store into a community-owned visitor facilities hub | £ | 756,922.00 | £ | 298,900.00 |
| Lochaber | Upper Achintore Regeneration Group | Professional fees to support development of business plan for proposed new community hub | £ | 16,880.00 | £ | 16,880.00 |
| Lochaber | Urram | Consultancy fees to develop and undertake a housing needs survey | £ | 20,736.00 | £ | 17,736.00 |
| Lochaber | Urram | Purchase of an additional electric vehicle for local community and hospital transport project | £ | 142,540.00 | £ | 63,747.83 |
| Lochaber | Voluntary Action Lochaber | Salaries for two Third Sector Support Officers for capacity building for organisations, volunteers and community planning | £ | 85,000.00 | £ | 65,000.00 |
| Lochaber | Voluntary Action Lochaber, on behalf of Lochaber Cc | Support for professional fees to develop a local place plan for Kinlochleven | £ | 21,600.00 | £ | 20,600.00 |
| Nairn | Cawdor Community Bowling Club | Costs towards design stages of a new bowling club with community space | £ | 7,964.00 | £ | 7,264.00 |
| Nairn | Nairn Access Panel | An access platform and boardwalk at Nairn beach | £ | 117,332.00 | £ | 57,332.00 |
| Nairn | Nairn BID | Feasibility study of Nairn Brae to improve safety and accessibility | £ | 12,458.40 | £ | 5,759.40 |
| Nairn | Nairn BID | Benches including wheelchair accessible picnic benches at Riverside Park | £ | 18,080.00 | £ | 18,446.99 |
| Nairn | Nairn Bowling Club | Professional fees to progress Planning Application for creation of purpose built Community Hub facility | £ | 34,621.00 | £ | 25,965.00 |

| | | | | | | |
|-------|---|---|---|------------|---|-----------|
| Nairn | Nairn Community & Arts Centre | A series of energy efficiency improvements including Wi-Fi enabled radiator valves and PIR sensors | £ | 35,983.44 | £ | 35,802.80 |
| Nairn | Nairn Community & Arts Centre | Feasibility study to propose capital projects to future proof the arts centre | £ | 12,179.00 | £ | 12,179.00 |
| Nairn | Nairn Community Transport | Purchase of a new minibus which is disability compliant and accessible for all user groups | £ | 59,462.00 | £ | 44,500.00 |
| Nairn | Nairn Improvement Community Enterprise (NICE) | Undertake community engagement and consultation to create new Local Place Plan for Nairn | £ | 47,000.00 | £ | 35,000.00 |
| Nairn | Nairn Improvement Community Enterprise(NICE) | Revitalised Nairn links public space inc. tiered seating for an outdoor performance area, improved lighting and benches | £ | 227,000.00 | £ | 54,790.00 |
| Nairn | Nairn Museum | Development of a key new display in the museum that celebrates the rich natural heritage of Nairnshire | £ | 15,172.00 | £ | 15,172.00 |
| Nairn | Nairn River Enterprise (Green Hive) | Upgrade of electric wiring systems at Seaman's Hall | £ | 21,135.68 | £ | 19,135.68 |
| Nairn | NICE | Undertake community engagement and consultation to create new Local Place Plan for Nairn | £ | 29,453.00 | £ | 29,453.00 |
| Nairn | The Highland Council | Install new footpath at East Harbour area | £ | 10,680.00 | £ | 10,680.00 |
| Nairn | The Highland Council | Revitalised Nairn links public space inc. tiered seating for an outdoor performance area, improved lighting and benches | £ | 230,000.00 | £ | 23,832.88 |
| Nairn | The Highland Council | Install outdoor shower to serve growing outdoor water sports sector | £ | 24,788.36 | £ | 9,101.28 |
| Nairn | Watermill Foundation Ltd | Feasibility study and architects fees for design of all abilities cycle proficiency track | £ | 15,600.00 | £ | 12,001.00 |
| Skye | ATLAS Arts | To support the roll out two projects promoting development of sustainable cultural provision | £ | 19,420.25 | £ | 15,874.42 |
| Skye | Broadford & Strath Community Company | Capacity building for a community organisation to support a portfolio of services and community initiatives | £ | 48,800.00 | £ | 41,000.00 |
| Skye | Broadford & Strath Community Company | To deliver a 10-year Action Plan for Broadford's Community Woodland | £ | 10,000.00 | £ | 8,500.00 |
| Skye | Broadford & Strath Community Company | To develop a Broadford Biodiversity plan aligned with the Highland Nature Biodiversity Action Plan | £ | 10,000.00 | £ | 8,500.00 |
| Skye | Broadford & Strath Community Company | Construction of a footpath from the village hall to the pier | £ | 52,776.69 | £ | 11,910.16 |
| Skye | Broadford & Strath Community Company | A feasibility study of the current path network and potential path links | £ | 21,000.00 | £ | 10,500.00 |
| Skye | Broadford & Strath Community Company | Caring for green spaces, supporting volunteers, and enabling community projects through hands-on gardening work | £ | 7,150.00 | £ | 5,000.00 |
| Skye | Broadford & Strath Community Company | Staff costs to support development of local place plan and develop a charity youth programme | £ | 56,870.00 | £ | 42,370.00 |
| Skye | Broadford & Strath Community Company | Improved access to the Broadford toilets and upgrade of the payment systems | £ | 23,564.00 | £ | 14,291.56 |
| Skye | Broadford & Strath Community Company | Capacity building for a community organisation to support a portfolio of services and community initiatives | £ | 43,956.00 | £ | 24,776.00 |
| Skye | Broadford & Strath Community Company | Support for development of the former Broadford public toilet building into a community asset | £ | 6,136.00 | £ | 6,136.00 |
| Skye | Broadford & Strath Community Company | Creation of a community owned event space at Broadford campsite | £ | 123,590.38 | £ | 50,000.00 |
| Skye | Carbost Pier Ltd | To support ongoing maintenance of Carbost Pier and future development of a harbour | £ | 31,010.97 | £ | 29,813.00 |
| Skye | Columba 1400 | Installation of energy efficient lighting to the playing pitch and car park | £ | 24,977.69 | £ | 20,814.74 |

| | | | | | | |
|------|--|---|---|------------|---|-----------|
| Skye | Communities Housing Trust | Development phase of a project looking to renovate Borrodale school buildings into affordable housing | £ | 14,041.00 | £ | 4,450.00 |
| Skye | Community of Raasay Retail Association | Development of a project to renovate of a former church building into a community shop | £ | 5,629.66 | £ | 5,608.85 |
| Skye | Cuillin FM t/a Radio Skye | Support for the post of Cultural Journalist to enhance Radio Skye's content and engagement | £ | 28,081.00 | £ | 14,081.00 |
| Skye | Cuillin FM ta Radio Skye | Supporting Radio Skye with the purchase of an electric van for outside broadcasting | £ | 48,000.49 | £ | 30,077.83 |
| Skye | Cuillin Fm trading as Radio Skye | Installing two accommodation pods to support the long term financial sustainability of Radio Skye | £ | 30,433.00 | £ | 15,000.00 |
| Skye | Dunvegan Community Trust | Re-development of the neglected Lochside Play Area into Dunvegan Community Park | £ | 181,090.76 | £ | 40,000.00 |
| Skye | Dunvegan Community Trust | Development of a Community Action Plan for the communities in the Dunvegan Community Council area | £ | 6,737.20 | £ | 5,000.00 |
| Skye | Dunvegan Community Trust | Development stage of a community housing project in Dunvegan | £ | 16,990.00 | £ | 12,570.00 |
| Skye | Dunvegan Community Trust | Re-development of the neglected Lochside Play Area into Dunvegan Community Park | £ | 165,489.72 | £ | 37,500.00 |
| Skye | Edinbane & Communities Company | Demolition of the former Edinbane shop to prepare for construction of "The Edinbane Centre" | £ | 49,200.00 | £ | 24,000.00 |
| Skye | Glendale Community Hall Association | Painting of Glendale Hall's exterior walls to improve protection of the building structure | £ | 11,177.25 | £ | 10,177.25 |
| Skye | Glendale Community Hall Association | Improvement works to the hall toilets and waste system | £ | 9,039.00 | £ | 5,719.00 |
| Skye | Ionad Throndairnis | To document Gaelic heritage through photography, exhibitions, festivals, and digital storytelling | £ | 30,000.00 | £ | 30,000.00 |
| Skye | Ionad Thròndairnis | Development phase of a Gaelic cultural centre fostering heritage, tourism, community, and economic sustainability | £ | 114,888.00 | £ | 17,349.00 |
| Skye | Ionad Thròndairnis | To undertake a review of the drawings for Ionad Thròndairnis and create a new financial model | £ | 9,525.00 | £ | 9,525.00 |
| Skye | John Muir Trust | Upgrade of the public toilet facility at Blà Bheinn | £ | 42,156.00 | £ | 15,900.00 |
| Skye | Kilmuir Community Trust | Construction of visitor infrastructure facilities to cater for motorhomes and electric vehicles | £ | 407,506.00 | £ | 90,319.00 |
| Skye | Portree & Braes Community Trust | Creation of two part-time roles to promote and maintain the community hall | £ | 12,587.00 | £ | 11,328.00 |
| Skye | Portree and Braes Community Trust | Redesign of the Trust's website to improve engagement levels and fundraising for the organisation | £ | 8,761.00 | £ | 8,761.00 |
| Skye | Portree and Braes Community Trust | Develop the Portree community allotments to service as a hub for community activities | £ | 64,470.97 | £ | 64,138.66 |
| Skye | Portree and Braes Community Trust | Capacity building for a community organisation to support a portfolio of services and community initiatives | £ | 18,412.00 | £ | 18,412.00 |
| Skye | Portree and Braes Community Trust | Support for the construction of a new accessible playpark on a derelict site in Portree | £ | 112,526.33 | £ | 49,696.00 |
| Skye | Portree and Braes Community Trust | To carry out essential improvement works and secure the facility for the future | £ | 11,037.02 | £ | 10,830.68 |
| Skye | Raasay Community Renewables | Feasibility study into community ownership of two new run-of-river hydro schemes on Skye | £ | 8,276.00 | £ | 8,276.00 |

| | | | | | | |
|------|---|---|---|------------|---|------------|
| Skye | Radio Skye | To develop two youth training programmes: "YouthSPACE" and Craoladairean Óga - Young Broadcasters | £ | 8,646.18 | £ | 6,332.50 |
| Skye | Radio Skye | Upgrade of current studio to allow for an improved youth broadcasting space | £ | 10,408.09 | £ | 10,408.09 |
| Skye | Skeabost Memorial Hall Association | New roof to preserve Skeabost Hall, ensuring social, cultural, and emergency support for remote communities | £ | 22,451.24 | £ | 7,185.24 |
| Skye | Skye & Lochalsh Citizens Advice Bureau | To employ an Outreach Adviser to reach out to all parts of the community | £ | 31,677.00 | £ | 18,177.00 |
| Skye | Skye & Lochalsh Council for Voluntary Organisations | Co-ordinating SARF and developing a Third Sector Health, Wellbeing, Welfare and Social Care Consortium | £ | 49,767.57 | £ | 30,767.57 |
| Skye | Skye and Lochalsh Community Care Forum | Professional design for provision of a bespoke centre for the Skye and Lochalsh Young Carers | £ | 50,064.00 | £ | 37,548.00 |
| Skye | Skye and Lochalsh Mental Health Association | To enhance the existing service by stretching support to reach more people geographically and demographically | £ | 61,576.00 | £ | 58,476.00 |
| Skye | Skye Camanachd | Purchase and installation of a new community hub stand | £ | 72,258.48 | £ | 25,000.00 |
| Skye | Skye Connect | Working with local communities to develop priority active travel routes. | £ | 32,500.00 | £ | 16,500.00 |
| Skye | Skye Iconic Sites Project | Building a mostly stone-pitched path up Meall na Suiramach | £ | 150,000.00 | £ | 90,000.00 |
| Skye | SkyeDance | Capacity building to increase Skyedance's reach and number of workshops, events and classes available | £ | 34,919.00 | £ | 25,939.00 |
| Skye | SkyeDance | Capacity building to increase Skyedance's reach and number of workshops, events and classes available | £ | 32,704.00 | £ | 23,052.37 |
| Skye | Sleat Community Trust | Improvement works to the production and storage shed used for the community-owned wood fuel business | £ | 28,000.00 | £ | 11,220.00 |
| Skye | Sleat Community Trust | To upgrade and redesign Ardasar playpark in Sleat | £ | 76,477.74 | £ | 55,719.00 |
| Skye | Staffin Community Trust | Building a memorial to the Crofters Uprisings in north-east Skye | £ | 57,495.00 | £ | 27,000.00 |
| Skye | Staffin Community Trust | To progress the detailed design of the Staffin Harbour development | £ | 23,200.00 | £ | 23,200.00 |
| Skye | Staffin Community Trust | Construction of a new harbour facilities building | £ | 594,623.00 | £ | 409,258.00 |
| Skye | Staffin Community Trust | To analyse archaeological findings and enable construction of the Staffin Harbour development | £ | 14,615.00 | £ | 14,415.00 |
| Skye | Staffin Community Trust | To provide a new water supply to Staffin Harbour as the final phase of the project's enabling works | £ | 36,392.29 | £ | 27,294.22 |
| Skye | Staffin Community Trust | To help meet the associated costs of seven new commercial units at Staffin Harbour | £ | 14,599.70 | £ | 14,599.70 |
| Skye | The Highland Council | To take forward sustainable transport and infrastructure improvement initiatives identified as priorities on Skye | £ | 57,080.00 | £ | 57,080.00 |
| Skye | The Highland Council | The project aims to deliver 3 road widening schemes on the Isle of Skye | £ | 550,000.00 | £ | 100,000.00 |
| Skye | The Highland Council | Installation of two EV chargers at the Old Man of Storr visitor car park | £ | 51,162.00 | £ | 49,165.00 |
| Skye | The Highland Council | Provision of a retail unit, visitor centre and EV charging facilities. | £ | 595,366.00 | £ | 440,000.00 |
| Skye | The Highland Council | Three road widening schemes to alleviate the negative impact of increased traffic from visitors. | £ | 550,000.00 | £ | 350,000.00 |
| Skye | The Highland Council | Replacement of the existing footbridge in Uig linking the village hall and playing fields | £ | 160,086.42 | £ | 40,000.00 |
| Skye | Uig Community Hall | To re-model the toilets and entrance to Uig Community Hall, enable modernisation and accessibility | £ | 135,400.00 | £ | 67,500.00 |

| | | | | | | |
|------------|--|--|---|--------------|---|------------|
| Skye | Uig Community Hall Association | Commission professional design services to accommodate accessible and family friendly facilities in Uig Community Hall | £ | 10,140.00 | £ | 9,000.00 |
| Skye | Uig Community Trust | Capacity building to support development of community projects and opportunities in Uig | £ | 45,000.00 | £ | 22,500.00 |
| Strategic | Balmacara Community Trust | Renovation of the former Old Mill Hall to a vibrant functioning community hall | £ | 1,259,055.70 | £ | 99,818.70 |
| Strategic | Centred | To pilot outreach mental health and wellbeing courses across the Highland region | £ | 51,365.00 | £ | 51,365.00 |
| Strategic | Communities Housing Trust | To develop the Legacy Housing for Communities Scheme aimed at increasing the number of homes available to purchase at a lower price in communities | £ | 25,000.00 | £ | 20,000.00 |
| Strategic | Community Woodlands Association | To provide learning opportunities through a series of exchange visits across different woodland community groups | £ | 14,400.00 | £ | 12,000.00 |
| Strategic | Fort William Marina & Shoreline Community Interest | Installation of toilets in West End Car Park | £ | 135,292.21 | £ | 74,292.21 |
| Strategic | Glen Urquhart Rural Community Association | Redevelopment of Glen Urquhart Public Hall into a thriving, energy efficient community hub | £ | 1,580,187.00 | £ | 87,687.00 |
| Strategic | Highland Third Sector Interface | Small grants programme towards enterprising and inclusive community projects | £ | 300,000.00 | £ | 300,000.00 |
| Strategic | Highlands & Islands Climate Hub | Staff costs and events management to support the facilitation of the Highland Youth LAG | £ | 10,750.00 | £ | 10,750.00 |
| Strategic | Highlands & Islands Climate Hub | Small grants programme towards resilient and sustainable communities | £ | 300,000.00 | £ | 300,000.00 |
| Strategic | Inverness Caledonian Thistle Community Development | Creation of an accessible teaching/workshop space and office facilities | £ | 1,187,097.44 | £ | 97,196.73 |
| Strategic | North Highland Initiative | Small grants programme towards energy efficiency projects | £ | 80,000.00 | £ | 40,000.00 |
| Strategic | North Highland Initiative | Small grants programme towards community infrastructure improvements | £ | 50,000.00 | £ | 50,000.00 |
| Strategic | North Highland Women's Wellbeing Group | Provide face to face support and online support sessions and information leaflets to raise awareness around women's health | £ | 5,000.00 | £ | 5,000.00 |
| Strategic | Scottish Wildlife Trust | To provide support and practical assistance to crofters in the Coigach and Assynt areas | £ | 55,473.00 | £ | 58,830.40 |
| Strategic | The Highland Council | Small grants programme to support provision of social services | £ | 90,000.00 | £ | 90,000.00 |
| Strategic | Youth Highland | To deliver a range of training programmes aimed at improving knowledge and understanding of youth work practice in the Highlands | £ | 9,250.00 | £ | 9,250.00 |
| Sutherland | Assynt Development Trust | A continuation of post to work on a range of projects fitting with the local and area plans within Sutherland | £ | 36,000.00 | £ | 20,930.73 |
| Sutherland | Assynt Development Trust | A part time post to cover administrative duties and place plan work for the Assynt area | £ | 16,700.00 | £ | 9,600.00 |
| Sutherland | Assynt Development Trust | To install new fencing at two playparks in Lochinver to keep the deer from entering | £ | 47,625.00 | £ | 17,625.00 |
| Sutherland | Assynt Development Trust | Repurposing of Clashnessie falls footpath to make it safer for the community and tourists and reduce CO2 emissions | £ | 52,473.00 | £ | 25,800.00 |
| Sutherland | Assynt Development Trust | RIBA Phase 1 & 2 towards phase 1 of the Glebe housing development in Lochinver | £ | 232,617.00 | £ | 44,430.00 |
| Sutherland | Assynt Development Trust | RIBA stage 3 and a planning application towards a housing development site in Lochinver | £ | 46,159.80 | £ | 46,159.80 |
| Sutherland | Assynt Development Trust | RIBA stage 4a/b towards a housing development site in Lochinver | £ | 172,210.00 | £ | 90,000.00 |
| Sutherland | Assynt Development Trust (ADT) on behalf of NW204 | The project is in place to create and implement a community-led place plan for NW2045 to address depopulation in Sutherland | £ | 54,680.00 | £ | 50,110.00 |
| Sutherland | Assynt Foundation | To improve 1.8km access road between Lochinver and Glencanisp/Assynt Foundation Lodge and improve signage | £ | 77,374.00 | £ | 37,345.42 |
| Sutherland | Assynt Leisure | Purchase of equipment and set up of supervised learning space in Assynt | £ | 18,787.33 | £ | 16,125.67 |

| | | | | | | |
|------------|--|---|---|------------|---|-----------|
| Sutherland | Assynt Leisure | Project will purchase indoor play equipment for children up to 6 years old | £ | 12,512.00 | £ | 12,432.00 |
| Sutherland | Assynt Leisure, Sport, Youth & Learning Centre | Purchase and installation of new fitness equipment | £ | 62,798.91 | £ | 61,798.91 |
| Sutherland | Bettyhill Village Hall | A feasibility study on how to modernise Bettyhill village hall | £ | 20,214.00 | £ | 14,214.00 |
| Sutherland | Brora Development Trust | To make vouchers available to parents/carers of 250 children in early learning, primary and high school over summer holidays | £ | 11,600.00 | £ | 11,600.00 |
| Sutherland | Brora Development Trust | To erect tourist signage around the town to improve the visitor experience and direct to the sites | £ | 16,793.00 | £ | 8,082.58 |
| Sutherland | Brora Development Trust | To set up a visitor information point & employ an officer | £ | 35,790.00 | £ | 35,480.40 |
| Sutherland | Brora Development Trust | To fund a visitor information officer to focus on income generating opportunities for the trust | £ | 25,550.00 | £ | 20,250.00 |
| Sutherland | Brora Development Trust | Development officer post to develop the trusts 'work plan' | £ | 58,840.00 | £ | 29,163.00 |
| Sutherland | Community Care Assynt Ltd | Additional staffing due to a reduction in NHS funding and pressures of inflation | £ | 104,000.00 | £ | 16,500.00 |
| Sutherland | Community Care Assynt Ltd | To extend the hours of the centre and increase staff time to provide a heat hub | £ | 16,188.50 | £ | 16,188.50 |
| Sutherland | Community Care Assynt Ltd | To provide activity sessions for one year with a focus on introducing arts & crafts skills to older adults and prevent isolation | £ | 19,220.00 | £ | 16,220.00 |
| Sutherland | Culrain & District Hall Committee | The first phase of a larger project to construct a new roof for the existing hall building and install an external ramp/ disabled toilets | £ | 89,557.20 | £ | 80,021.20 |
| Sutherland | Dementia Friendly Communities Ltd, known as Conn | A pilot youth club set up to combat social loneliness and provide a safe space for children | £ | 9,025.33 | £ | 8,141.06 |
| Sutherland | Dornoch Area CIC | A pilot project to run a community transport scheme leasing an electric vehicle | £ | 37,500.00 | £ | 16,000.00 |
| Sutherland | Dornoch Area Community Interest Company | To install a new multi use game area in South Dornoch to be suitable for multiple sports and include flood lighting | £ | 335,209.00 | £ | 63,986.00 |
| Sutherland | Dornoch Firth Group | A pilot project to provide counselling services for adults aged 16 and above in Sutherland | £ | 29,260.00 | £ | 29,227.50 |
| Sutherland | Dornoch Heritage | Running of a community programme for the newly built heritage hub | £ | 33,400.00 | £ | 18,985.00 |
| Sutherland | Durness Community Group | Purchasing and installing new equipment for the playpark on School road | £ | 112,355.60 | £ | 56,899.01 |
| Sutherland | Durness Golf Club | To replace the current mower with a more energy efficient hybrid model | £ | 16,500.00 | £ | 10,025.00 |
| Sutherland | Embo Trust | Installation of solar panels and making the hall more energy efficient | £ | 6,846.00 | £ | 6,346.00 |
| Sutherland | Farr North Community Development Trust | Manager/officer posts to deliver a Community Action Plan in North Sutherland | £ | 58,144.00 | £ | 30,360.90 |
| Sutherland | Go Golspie | To upgrade and install an acoustic system, LED lighting & gardening equipment to upgrade the hall | £ | 64,960.65 | £ | 21,042.00 |
| Sutherland | Go Golspie | To secure and develop community transport by purchasing a replacement minibus and continuing the transport admin post | £ | 78,433.00 | £ | 58,783.00 |
| Sutherland | Go Golspie | Development officer post to work on several projects and increase community capacity | £ | 38,950.00 | £ | 30,071.00 |
| Sutherland | Go Golspie Development Trust | Upgraded office and storage spaces | £ | 13,904.00 | £ | 13,904.00 |
| Sutherland | Go Golspie Development Trust | Provide development manager support for 4 months to continue the work delivering projects in the area | £ | 17,166.00 | £ | 13,500.00 |
| Sutherland | Go Golspie Development Trust | Refurbishing and replacing equipment and making the playpark accessible within Golspie | £ | 110,000.00 | £ | 85,000.00 |
| Sutherland | Go Golspie Development Trust | To provide additional transport activities to support more people, increased trips and co-ordination support | £ | 12,558.75 | £ | 9,079.75 |
| Sutherland | Golspie Gold Club | Feasibility study on water management for the future sustainability of the course | £ | 11,232.00 | £ | 10,000.00 |

| | | | | | | |
|------------|--|---|---|--------------|---|------------|
| Sutherland | Golspie Golf Club | Replacement of roof and insulation to improve the energy efficiency of the building | £ | 45,600.00 | £ | 45,600.00 |
| Sutherland | Golspie Golf Club | Installation of a groundwater abstraction system to ensure a reliable source of water supply to manage the golf course. | £ | 19,885.00 | £ | 18,765.00 |
| Sutherland | Helmsdale & District Community Association | To replace the playpark in Helmsdale as the current one is no longer fit for purpose and not safe to use | £ | 152,681.00 | £ | 70,000.00 |
| Sutherland | Helmsdale & District Development Fund | The development of the MUGA comprising of two areas on the site of the old tennis courts | £ | 490,250.00 | £ | 29,763.58 |
| Sutherland | Helmsdale Heritage and Arts Society (Timespan) | To support the second phase of a social well-being initiative aimed at addressing social exclusion, loneliness and isolation in Helmsdale | £ | 79,753.00 | £ | 31,964.00 |
| Sutherland | Highland Wool CIC | Restoring and bringing online a heritage woollen carding machine and preparation of a business plan | £ | 10,000.00 | £ | 10,000.00 |
| Sutherland | History Links Museum | An extension of the history links museum building to create a new space for exhibitions/events | £ | 559,831.00 | £ | 50,000.00 |
| Sutherland | Kinlochbervie Community Company | Phase 1 of a larger scale project to establish a seaweed industry in the North West Sutherland | £ | 23,805.20 | £ | 22,116.65 |
| Sutherland | Kinlochbervie Community Company | Phase 2 development of Loch Clash including restoration of the Net Sheds and campervan area | £ | 15,540.00 | £ | 14,540.00 |
| Sutherland | Kinlochbervie Community Company | Phase 3 regeneration project to develop Loch Clash in Kinlochbervie as per NW2045 | £ | 40,480.00 | £ | 21,341.71 |
| Sutherland | Kinlochbervie Pre-school Centre Association | To refurbish and bring the setting to a suitable standard for childcare services | £ | 16,253.75 | £ | 14,753.75 |
| Sutherland | Kyle of Sutherland Development Trust | Officer posts to work on community planning across Sutherland | £ | 65,088.00 | £ | 40,088.00 |
| Sutherland | Kyle of Sutherland Hub | To fund the stages to submit a building warrant application for the construction of an extension to the hall | £ | 41,276.00 | £ | 41,276.00 |
| Sutherland | Kyle of Sutherland Hub | To submit a planning application to extend The Hub to provide extra space for new activities | £ | 43,200.00 | £ | 35,791.80 |
| Sutherland | Lairg & District Community Initiatives | Installation of a new 'all-abilities' playpark adjacent to Ferrycroft Visitor Centre | £ | 125,454.24 | £ | 60,000.00 |
| Sutherland | Lochinver Primary School Parent Council | To install new play equipment at Lochinver Primary School | £ | 60,000.00 | £ | 52,431.13 |
| Sutherland | Melness Crofter's Estate | Development phase of an affordable housing project to the stage of planning permissions and building warrant in place | £ | 2,400,000.00 | £ | 63,000.00 |
| Sutherland | Scottish Wildlife Trust | To commission a feasibility study to address a shortage of local, native trees in the aim of becoming cost-neutral | £ | 28,970.00 | £ | 18,970.00 |
| Sutherland | Scourie Community Development Company | To provide consultancy work to manage the housing project to construct 8 affordable homes | £ | 7,695.00 | £ | 7,695.00 |
| Sutherland | Scourie Community Development Company | Development officer post to work on a variety of projects such as housing development | £ | 29,109.00 | £ | 18,309.00 |
| Sutherland | Scourie Community Development Company | Completion of planning phases towards completion of an affordable housing development in Scourie | £ | 31,968.00 | £ | 21,968.00 |
| Sutherland | Scourie Community Development Company | Purpose built museum explaining the geology of the UNESCO accredited North-West Highlands Geopark | £ | 30,000.00 | £ | 30,000.00 |
| Sutherland | Strathnaver Museum | A series of workshops and programme of events to target young people and engage them in the arts | £ | 33,921.00 | £ | 5,775.20 |
| Sutherland | Sutherland Resilience Initiative | An integrated transport service across Sutherland county using electric vehicles | £ | 101,673.00 | £ | 101,673.00 |
| Sutherland | Sutherland Transport | To establish and develop an integrated transport service across Sutherland | £ | 38,400.00 | £ | 33,400.00 |

| | | | | | | |
|------------|---|--|---|--------------|---|------------|
| Sutherland | The Highland Council | To provide an access ranger service across Sutherland | £ | 100,000.00 | £ | 100,000.00 |
| Sutherland | The Highland Council | To expand the visitor carpark from 40-78 spaces, bays for motorhomes and new toilets/shower facilities | £ | 1,051,298.00 | £ | 246,698.00 |
| WRSL | Applecross Community Hall | Project to purchase projector and sound equipment for village hall | £ | 4,900.00 | £ | 2,000.00 |
| WRSL | Aultbea Hall | Undertake remedial works and renovations to the structure of the main hall and bring it back into community use | £ | 74,095.00 | £ | 50,595.00 |
| WRSL | Balmacara Community Trust | Design, development and partial demolition phase for redevelopment of old mill hall as a community space | £ | 71,760.00 | £ | 61,760.00 |
| WRSL | Coigach Community Development Company | Legal fee support to assist community in acquisition of land into community ownership | £ | 14,400.00 | £ | 14,400.00 |
| WRSL | Coigach Community Development Company | RIBA stages to lead to pre-tender for an affordable community housing project | £ | 67,942.00 | £ | 57,942.00 |
| WRSL | Community Out West Trust | Visitor information signs to promote responsible tourism | £ | 5,465.00 | £ | 3,467.03 |
| WRSL | Dornie & District Community Hall Committee | Costs for repair and refurbishment of community hall toilets also used as public toilets | £ | 46,006.00 | £ | 38,440.00 |
| WRSL | Dornie Moorings Association | Development and consent application work to provide visitor moorings and pontoon | £ | 37,210.00 | £ | 30,910.00 |
| WRSL | Gairloch Community Car Scheme | Assisting core costs for community transport scheme | £ | 43,943.97 | £ | 5,000.00 |
| WRSL | Gairloch Community Council with Gairloch Area Dev | To undertake a local place plan in Gairloch | £ | 25,317.00 | £ | 22,817.00 |
| WRSL | GALE Action Forum | Community befriending and mental health support initiative | £ | 54,632.00 | £ | 36,432.00 |
| WRSL | Garve Public Hall | A bright, accessible and fit for purpose community building in the village of Garve | £ | 1,071,509.00 | £ | 210,000.00 |
| WRSL | Kinder Croft | Creation of a an insulated outdoor shelter to provide outdoor learning for children | £ | 15,900.00 | £ | 15,891.79 |
| WRSL | Kinlochewe Village Hall | Construction of a new bouldering wall facility in Kinlochewe Village Hall | £ | 42,503.53 | £ | 25,000.00 |
| WRSL | Kinlochewe Village Hall | Replacement of the toilet facilities in Kinlochewe Village Hall | £ | 29,164.80 | £ | 25,000.00 |
| WRSL | Kinlochsheil Shinty & Community Sports Club Ltd | Design and budget costing work for community sports and changing facilities | £ | 36,968.40 | £ | 28,740.00 |
| WRSL | Kinlochshiel Shinty & Community Sports Club Ltd | Replacement minibus for a community sports club in Lochalsh | £ | 40,000.00 | £ | 30,000.00 |
| WRSL | Kyle & Lochalsh Community Trust | Specifically looking to develop projects for community housing and area spacial mapping from Community Action Plan | £ | 50,150.00 | £ | 22,241.00 |
| WRSL | Kyle & Lochalsh Community Trust | Delivering the Lochalsh Community Action Plan | £ | 46,334.00 | £ | 24,961.00 |
| WRSL | Lochalsh and Skye Swimming Pool Association | Project to restart Lochalsh Leisure Centre following closure after fire damage | £ | 26,138.63 | £ | 25,000.00 |
| WRSL | Lochbroom Community Council | installation of a new swing park in Ullapool | £ | 47,738.00 | £ | 25,000.00 |
| WRSL | Lochbroom Sailing Club | New equipment to expand the provision of youth sailing | £ | 29,662.33 | £ | 31,735.36 |
| WRSL | Plockton & District Community Trust | Community trust seeking to develop a tourism place plan to deal with over tourism pressures | £ | 19,515.00 | £ | 15,000.00 |
| WRSL | Plockton & District Community Trust | Design and planning application phase for development of former village post office | £ | 11,460.00 | £ | 11,000.00 |
| WRSL | Scoraig Community Centre Group | Design work towards replacement community centre roof works | £ | 8,000.00 | £ | 5,000.00 |
| WRSL | Scoraig Community Centre Group | RIBA 4 stage developmental work to bring project to pre-tender stage | £ | 25,800.00 | £ | 25,000.00 |
| WRSL | Skye & Kyle Rail Development Co Ltd | Upgrade to Kyle Station Museum | £ | 26,950.00 | £ | 18,700.00 |
| WRSL | Strathpeffer Community Development Trust | Funding to assist the fitting out and initial running costs of a community shop | £ | 27,034.24 | £ | 11,940.24 |
| WRSL | Strathpeffer Residents Association | Construction of new community playpark for Strathpeffer | £ | 128,777.79 | £ | 96,877.79 |
| WRSL | Strathpeffer Residents' Association | Phase 2 playpark construction works to put in place a 0-4 year old play area | £ | 107,066.00 | £ | 59,335.00 |
| WRSL | The Garve & District Development Company | Provision of a community transport service | £ | 174,432.00 | £ | 98,494.00 |
| WRSL | The Highland Council | Commissioning of existing and installation of new EV charging infrastructure | £ | 105,408.66 | £ | 70,827.15 |

| | | | | | | |
|------|---|--|---|-----------|---|-----------|
| WRSL | The Howard Doris Centre | Staff cost support for community wellbeing hub transitioning from NHS supported daycare facility | £ | 85,160.00 | £ | 59,335.00 |
| WRSL | Torrison District Community Association | 2 years development officer salary costs | £ | 78,060.00 | £ | 30,000.00 |
| WRSL | Torrison District Community Association | Feasibility study for re-purposing Torrison Primary School for community use | £ | 17,075.00 | £ | 17,075.00 |
| WRSL | Torrison District Community Association | Pilot project to put in place a community recycling hub and signpost to local services | £ | 16,615.00 | £ | 16,675.00 |
| WRSL | Toybox Children's Centre | Support for childcare staff costs in Gairloch | £ | 22,540.00 | £ | 12,500.00 |
| WRSL | Ullapool Community Trust | Community project to develop mountain bike trails in FLS land near Ullapool | £ | 52,948.00 | £ | 33,180.00 |
| WRSL | Wester Loch Ewe Community Council | Funding to undertake a local place plan in the Wester Loch Ewe area | £ | 8,100.00 | £ | 8,100.00 |
| WRSL | Wester Ross Biosphere | Community centred workshops to understand tourism impacts on communities | £ | 22,407.00 | £ | 19,907.00 |