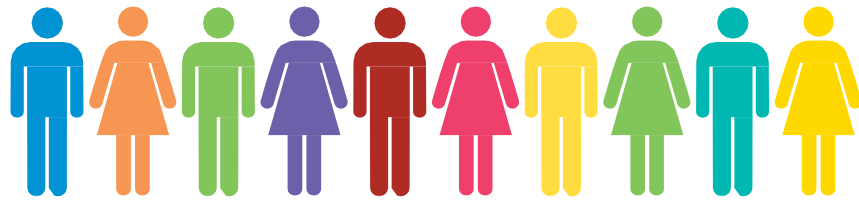


# Local & National



## Statutory Performance Indicators

2017/18

[www.highland.gov.uk/performance](http://www.highland.gov.uk/performance)

# Benchmarking

## What is the Local Government Benchmarking Framework (LGBF)?

Local councils across Scotland are required to publish their performance information using the LGBF each year. This ensures that councils report standard information on the services councils provide to local communities across Scotland. The indicators within the LGBF were selected through a wide consultation process to cover the major service areas of local authorities. The performance between all **32 Scottish Local Authorities** is reported in quartiles.

# Children's Services

## CHN1

How much does my council spend on primary schools?  
£ per pupil

Highland £5,174.33



Scotland £4,974.40



Ranked **20** of **32**

## CHN2

How much does my council spend on secondary schools?  
£ per pupil

Highland £7,000.53



Scotland £6,879.49



Ranked **19** of **32**

## CHN3

How much does my council spend on pre-school education?  
£ per pre-school pupil

Highland £4,567.62



Scotland £4,463.27



Ranked **17** of **32**

## CHN4

What percentage of secondary school pupils achieved 5 plus awards at SCQF level 5 or higher?  
%

Highland 61%



Scotland 62%



Ranked **19** of **32**

## CHN5

What % of secondary school pupils achieved 5 plus awards at SCQF level 6?  
%

Highland 31%



Scotland 34%



Ranked **22** of **32**

## CHN6

What % of secondary school pupils from deprived areas achieved 5 plus awards at SCQF level 5?  
%

Highland 31%



Scotland 42%



Ranked **25** of **32**

## CHN7

What % of secondary school pupils from deprived areas achieved 5 plus awards at SCQF level 6?  
%

Highland 9%



Scotland 16%



Ranked **25** of **32**

## CHN8a

How much does my council spend on providing residential accommodation for 'looked after children'?  
£ per child per week

Highland £3,009.50



Scotland £3,404.36



Ranked **13** of **32**

2016/17  
Figures

## CHN8b

How much does my council spend on providing fostering/family placements for 'looked after children'?  
£ per child per week

Highland £159.92



Scotland £312.73



Ranked **3** of **32**

2016/17  
Figures

## CHN9

How many 'looked after children' are being cared for in foster/family placements rather than residential accommodation?  
%

Highland 82.6%



Scotland 89.9%



Ranked **30** of **32**

## CHN10

How satisfied are residents with local schools?  
%

Highland 78.3%



Scotland 72.3%



Ranked **12** of **32**

## CHN11

What % of pupils enter a positive destination after leaving school?  
%

Highland 95.5%



Scotland 93.7%



Ranked **7** of **32**

## CHN12a

Average total points awarded for levels of attainment achieved - Overall average tariff

Average tariff score

Highland 848



Scotland 891



Ranked **21** of **32**

## CHN12b

Average total points awarded for levels of attainment achieved - SIMD Quintile 1

Average tariff score

Highland 489



Scotland 618



Ranked **25** of **32**

## CHN12c

Average total points awarded for levels of attainment achieved - SIMD Quintile 2

Average tariff score

Highland 679



Scotland 750



Ranked **26** of **32**

## CHN12d

Average total points awarded for levels of attainment achieved - SIMD Quintile 3

Average tariff score

Highland 877



Scotland 896



Ranked **18** of **32**

**CHN12e**

Average total points awarded  
for levels of attainment  
achieved - SIMD Quintile 4

**Average tariff score**

**Highland 920**



Scotland 1,016



Ranked **26** of **32**

**CHN12f**

Average total points awarded  
for levels of attainment  
achieved - SIMD Quintile 5

**Average tariff score**

**Highland 1,102**



Scotland 1,221



Ranked **25** of **32**

**CHN17**

Children meeting developmental  
milestones (27-30 months)  
%

**Highland 68.2%**



Scotland 66.2%

2016/17  
Figures



Ranked **18** of **32**

**CHN18**

Funded early years provision  
rated good or better  
%

**Highland 89.2%**



Scotland 91.0%



Ranked **22** of **32**

**CHN19a**

School  
attendance rates  
%

**Highland 93.4%**



Scotland 93.3%

2016/17  
Figures



Ranked **17** of **32**

**CHN19b**

School attendance rates for  
looked after children  
%

**Highland 91.1%**



Scotland 91.0%

2016/17  
Figures



Ranked **18** of **32**

**CHN20a**

School  
exclusion rates  
per 1,000 pupils  
**Highland 22.7**



Scotland 26.8

2016/17  
Figures



Ranked **17** of **32**

**CHN20b**

School exclusion rates for  
looked after children  
per 1,000 looked after children  
**Highland 108.8**



Scotland 80.0

2016/17  
Figures



Ranked **20** of **32**

**CHN21**

What % of 16-19 year olds  
are participating in learning,  
training or work  
%

**Highland 93.8%**



Scotland 91.8%



Ranked **11** of **32**

**CHN22**

Child protection re-registrations  
within 18 months  
%

**Highland 5.1%**



Scotland 6.5%

2016/17  
Figures



Ranked **14** of **32**

**CHN23**

Looked after children with  
more than one placement  
in the last year  
%

**Highland 34.7%**



Scotland 21.2%

2016/17  
Figures



Ranked **31** of **32**

# Corporate Services

## CORP1

How much of my council's total running costs is spent on administrative support services?  
%

Highland 7.7%



Scotland 4.5%



Ranked **32** of **32**

## CORP3b

How many women are in top 5% earners?  
%

Highland 51.4%



Scotland 54.6%



Ranked **21** of **32**

## CORP3c

What is the gender pay gap?  
%

Highland 7.2%



Scotland 3.9%



Ranked **26** of **32**

## CORP4

How much does my council spend on collecting council tax?  
£ per home

Highland £8.36



Scotland £7.35



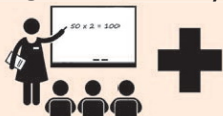
Ranked **22** of **32**

## CORP6a

What is the level of sickness absence for teachers in my council?

Average number of days per teacher

Highland 7.17 days



Scotland 5.93 days



Ranked **25** of **32**

## CORP6b

What is the level of sickness absence in my council?

Average number of days per employee (non-teachers)

Highland 10.75 days



Scotland 11.41 days



Ranked **12** of **32**

## CORP7

How efficient is my council at collecting council tax?

%

Highland 96.2%



Scotland 96.0%



Ranked **15** of **32**

## CORP8

How efficient is my council at paying invoices on time?

%

Highland 95.3%



Scotland 93.2%



Ranked **10** of **32**

# Corporate Asset

## C-AST1

How many council buildings are suitable for their current use?  
%

Highland 66.1%



Scotland 81.0%



Ranked **32** of **32**

## C-AST2

How many council buildings are in a satisfactory condition?  
%

Highland 82.1%



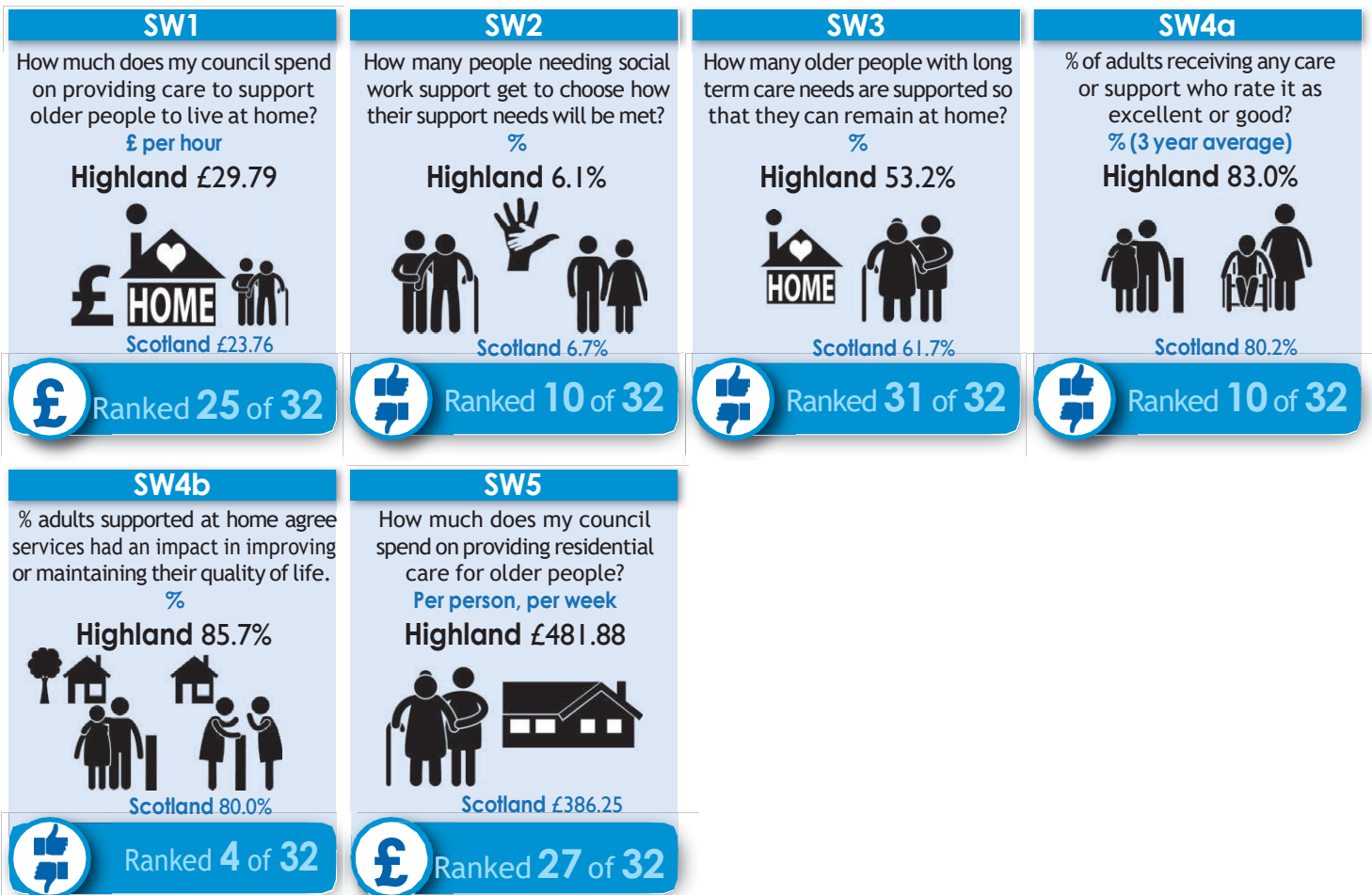
Scotland 86.3%



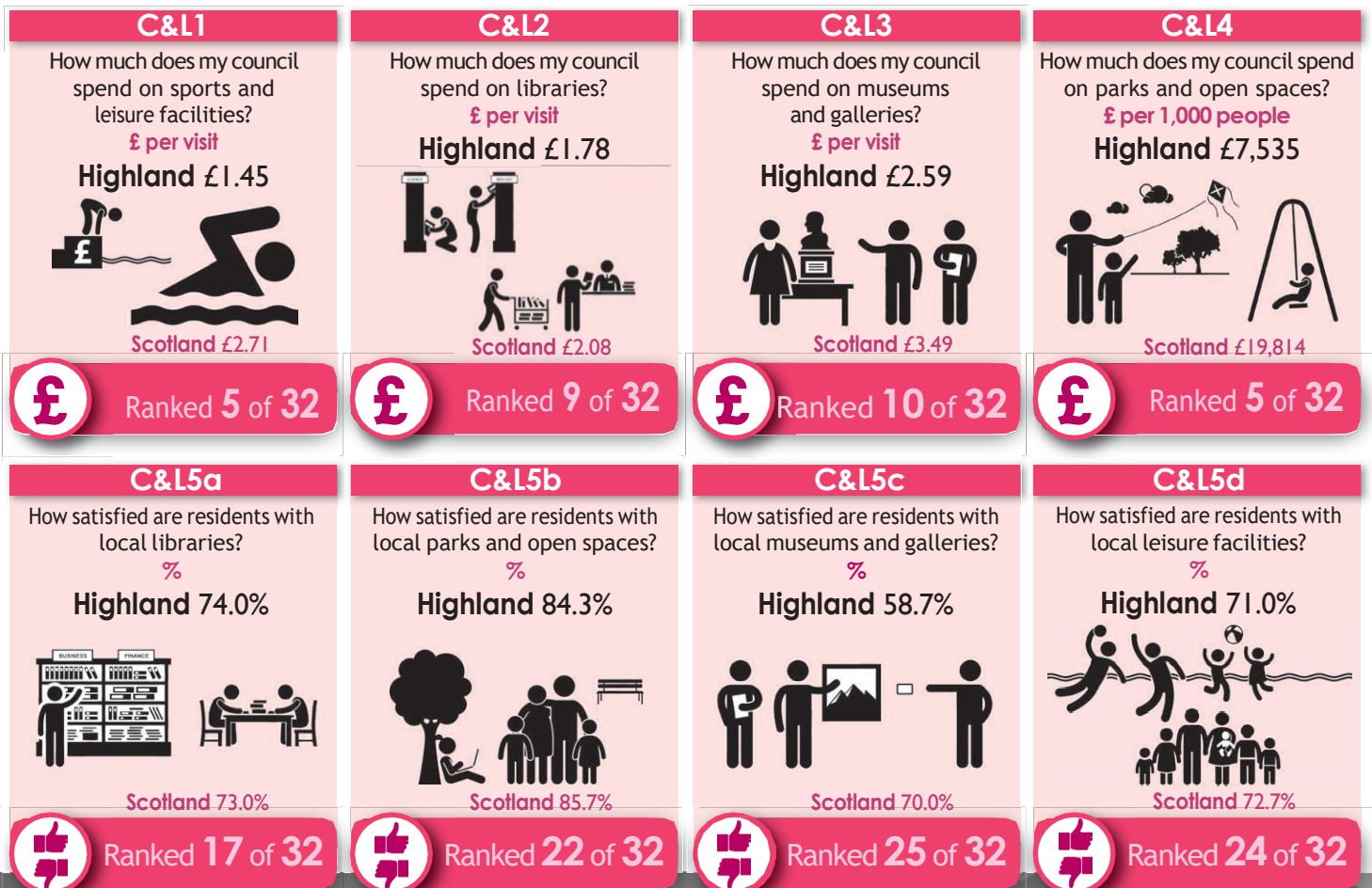
Ranked **24** of **32**



# Adult Social Care Services



# Culture and Leisure Services



# Environmental Services

## ENV1a

How much does my council spend on refuse collection (net)?  
£ per premise  
**Highland £62.82**



Scotland £65.98

£ Ranked **18** of **32**

## ENV2a

How much does my council spend on waste disposal (e.g. recycling and landfill) (net)?  
£ per premise  
**Highland £97.66**



Scotland £98.42

£ Ranked **18** of **32**

## ENV3a

How much does my council spend on street cleaning?  
£ per 1,000 people  
**Highland £4,915**



Scotland £15,551

£ Ranked **1** of **32**

## ENV3c

How clean are my local streets?  
%  
**Highland 94%**



Scotland 92%

Ranked **14** of **32**

## ENV4a

How much does my council spend maintaining the condition of my roads?  
£ per kilometre  
**Highland £8,075**



Scotland £10,547

£ Ranked **9** of **32**

## ENV4b

How many of my local A class roads are in need of repair?  
%

**Highland 28.9%**

Scotland 30.2%

Ranked **21** of **32**

## ENV4c

How many of my local B class roads are in need of repair?  
%

**Highland 35.7%**

Scotland 35.9%

Ranked **20** of **32**

## ENV4d

How many of my local C class roads are in need of repair?  
%

**Highland 40.3%**

Scotland 36.2%

Ranked **23** of **32**

## ENV4e

How many of my local unclassified class roads are in need of repair?  
%  
**Highland 43.8%**



Scotland 39.0%

Ranked **25** of **32**

## ENV5a

How much does my council spend on providing trading standards, money advice, and citizen advice?  
£ per 1,000 people  
**Highland £2,049**



Scotland £5,890

£ Ranked **3** of **32**

## ENV5b

How much does my council spend on providing environmental health  
£ per 1,000 people  
**Highland £16,940**



Scotland £15,496

£ Ranked **22** of **32**

## ENV6

How much household waste is recycled by my council?  
%  
**Highland 43.6%**



Scotland 45.6%

Ranked **22** of **32**

## ENV7a

How satisfied are residents with local refuse collection?  
%  
**Highland 88.3%**



Scotland 78.7%

Ranked **5** of **32**

## ENV7b

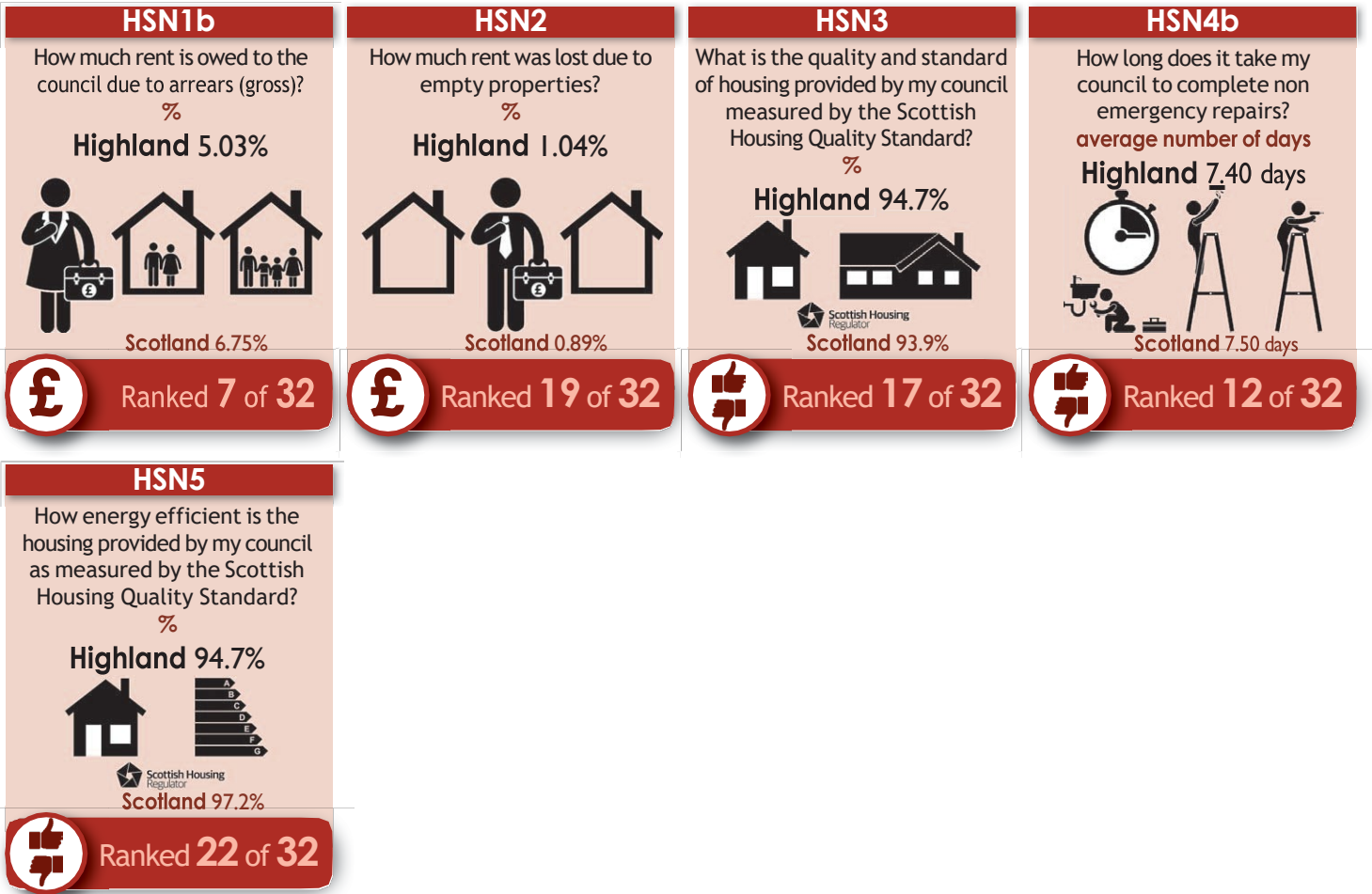
How satisfied are residents with local street cleanliness?  
%  
**Highland 74.0%**



Scotland 69.7%

Ranked **11** of **32**

# Housing Services



# Economic Development

