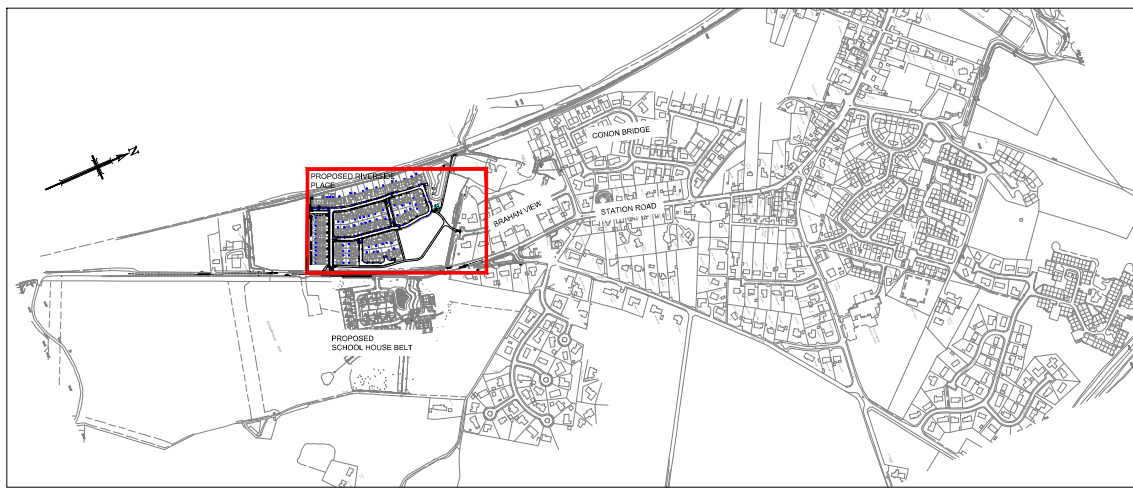
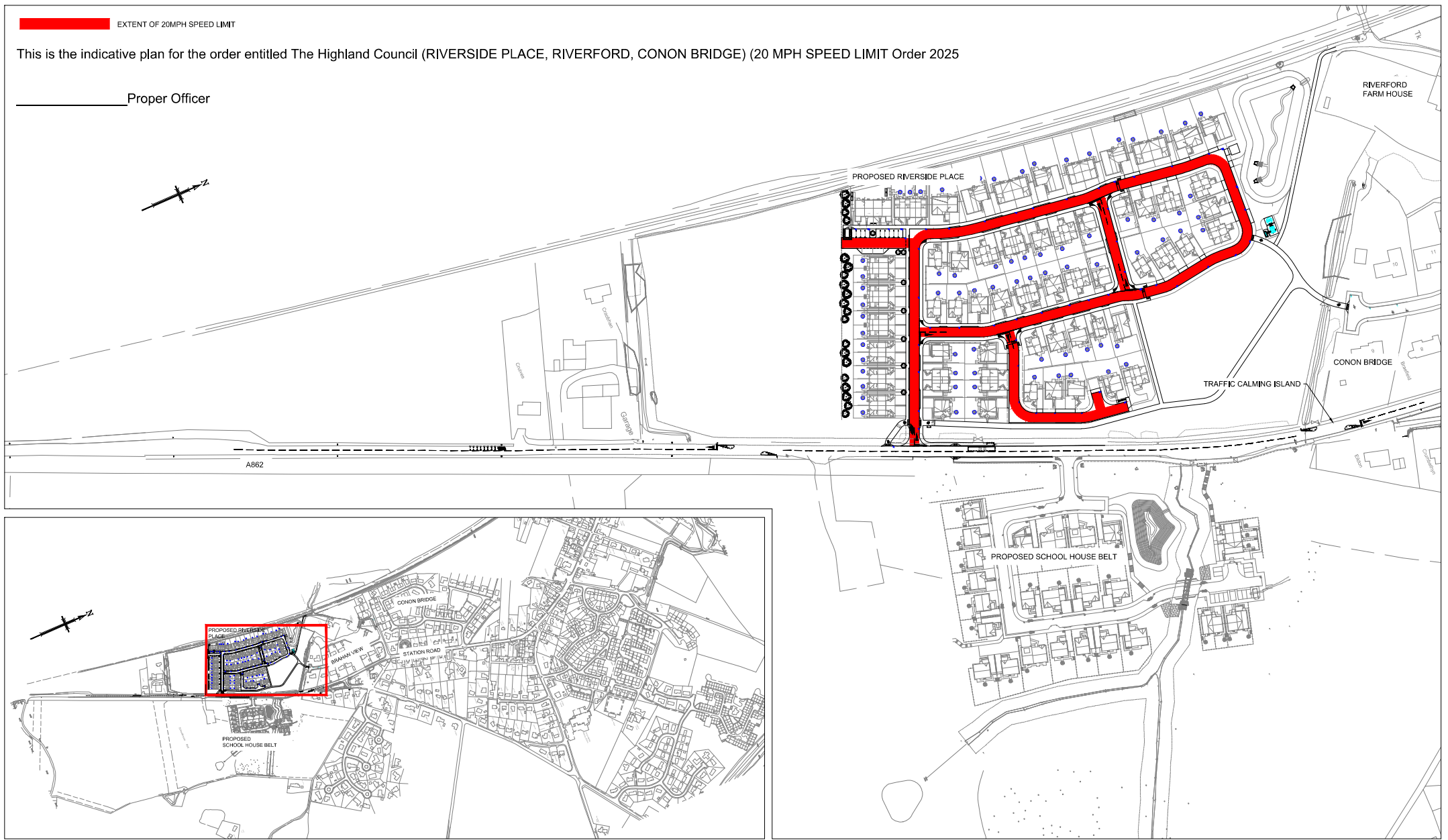


EXTENT OF 20MPH SPEED LIMIT

This is the indicative plan for the order entitled The Highland Council (RIVERSIDE PLACE, RIVERFORD, CONON BRIDGE) (20 MPH SPEED LIMIT Order 2025)

Proper Officer



LOCATION PLAN
SCALE 1:5000

TRO LAYOUT PLAN
SCALE 1:1000

Revisions	Date	Dm.	Revisions	Date	Dm.
A	06.10.25	MC			
EXTENT OF SPEED LIMIT REVISED					

TULLOCH HOMES LTD

**APPROVAL
DRAWING**

consulting engineers
hga

HSAURU Ltd
Darach House
Sandyhall Business Park
Broomhall, K2 7JH
T: 01463 221717
F: 01463 204270
email: hga@hgaengineers.co.uk

RIVERFORD

20MPH SPEED LIMIT ORDER

Drawn: MC	Ch'd	Scale: 1:750 (A1)
Date: SEPT 25	Date:	DO NOT SCALE
Drawing No. 3830:136	Revision A	