

**Office Space, 1-5 Church Street  
Inverness, IV1 1DY**

**To Let / Airson Màl**



**Modern contemporary City Centre location  
First Floor open plan Office space  
142 m<sup>2</sup> or thereby**

**Rent £21,000 per annum,  
exclusive of VAT**

**To view all property available for lease, please visit our  
webpage: [www.highland.gov.uk/propertyletting](http://www.highland.gov.uk/propertyletting)**

## Location & Description:

The subjects are in close proximity to Inverness High Street and all City Centre amenities. Easily accessible from all forms of local public transport. Inverness is the Capital of the Highlands and is the administrative centre for the area. As the gateway to the Highlands, it is recognised for its high quality of life and idyllic location.

The subjects comprise a first-floor open plan office space with a separate glass-fronted small office, large meeting room and 2 small work pod rooms.

Each floor is self-contained with welfare facilities, including a disabled shower room, toilets, kitchen, and lift access. In addition to a secure video entry system, LG7 lighting and mechanical ventilation. This fully refurbished space features a sleek, modern aesthetic with clean, contemporary décor.

## Lease Terms & Conditions:

We are offering the property for lease on tenant full repairing & insuring terms.

You will be responsible for meeting all the legal costs of preparing the lease. You will also be liable for any LBTT, Registration Dues and VAT thereon.

## Rent, VAT, & Insurance:

You will pay the first quarter's rent and insurance in advance of taking entry and thereafter monthly in advance by Direct Debit. The property rent and insurance are exempt of VAT. The insurance is £271.08 per annum.

## Service Charge:

A service charge applies in respect of common areas. Details are available on request. The Service Charge is £10,081.40 per annum, £2,520.35 per quarter. The service charge does not include electricity charges.

## Floor Area:

The first-floor area is 142 m<sup>2</sup> or thereby, measured on the basis of IPMS 3.

Indicative floor plans available upon request.

## Energy Performance Certificate:

Rated E

## Rateable Value & Annual Business Rate:

The first-floor area is awaiting assessment by Assessors office. For further information please contact the Assessor [assessor@highland.gov.uk](mailto:assessor@highland.gov.uk).

If you believe you may be exempt of liability for Non-Domestic Rates, it is your responsibility to apply for the appropriate exemption.

Up to date information:

<https://www.mygov.scot/non-domestic-rates-calculator>

## Are You Interested in This Property:

If you wish to arrange a viewing or request an application pack, please contact Property Letting at Council Headquarters at:

**Email:** [property.letting@highland.gov.uk](mailto:property.letting@highland.gov.uk)

**Telephone:** (01463) 785128 (24 hour voicemail).

Alternatively, if a closing date already has been set, the application pack may be downloaded from [www.highland.gov.uk/land-property/commercial-property-sale-rent/2](http://www.highland.gov.uk/land-property/commercial-property-sale-rent/2)

Your application must be accompanied by a bank reference, confirming your financial standing and your ability to meet the financial obligations of the proposed lease:

**And for existing businesses**, copies of the last three years certified final accounts;

**Or for new businesses**, a business plan detailing the first year's anticipated cash flow statement, together with summary figures for years two and three.

It is your responsibility to obtain the reference from your bank.

**Please email your completed application to:**

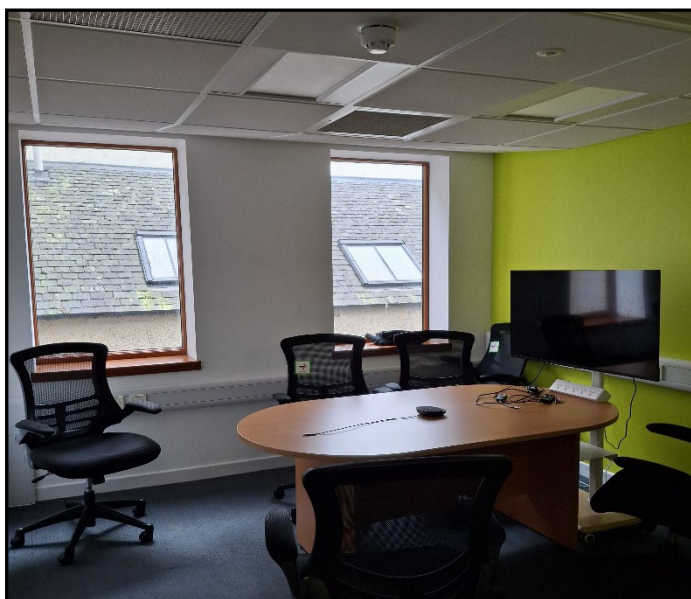
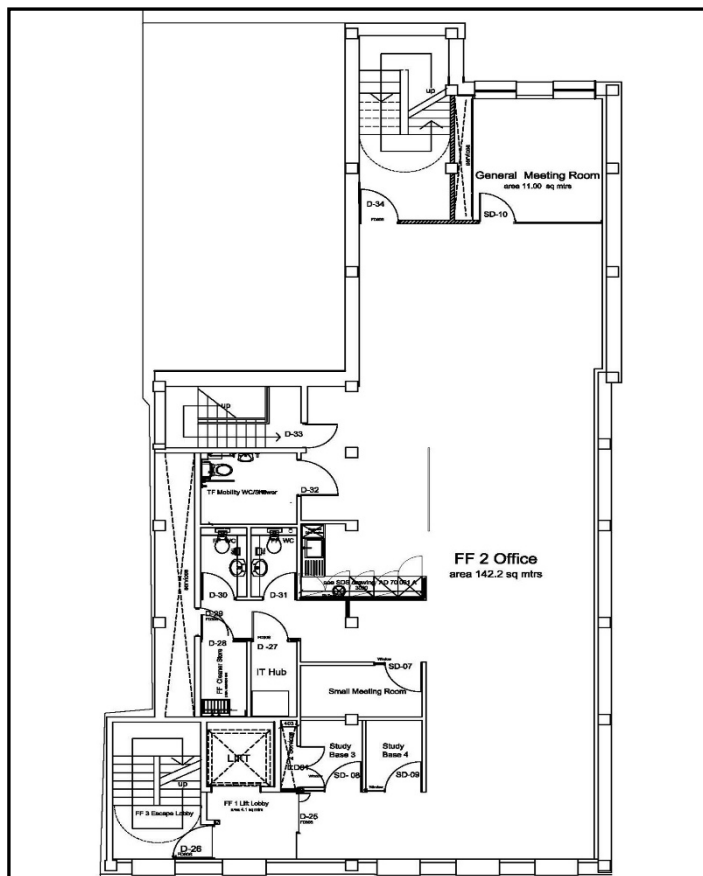
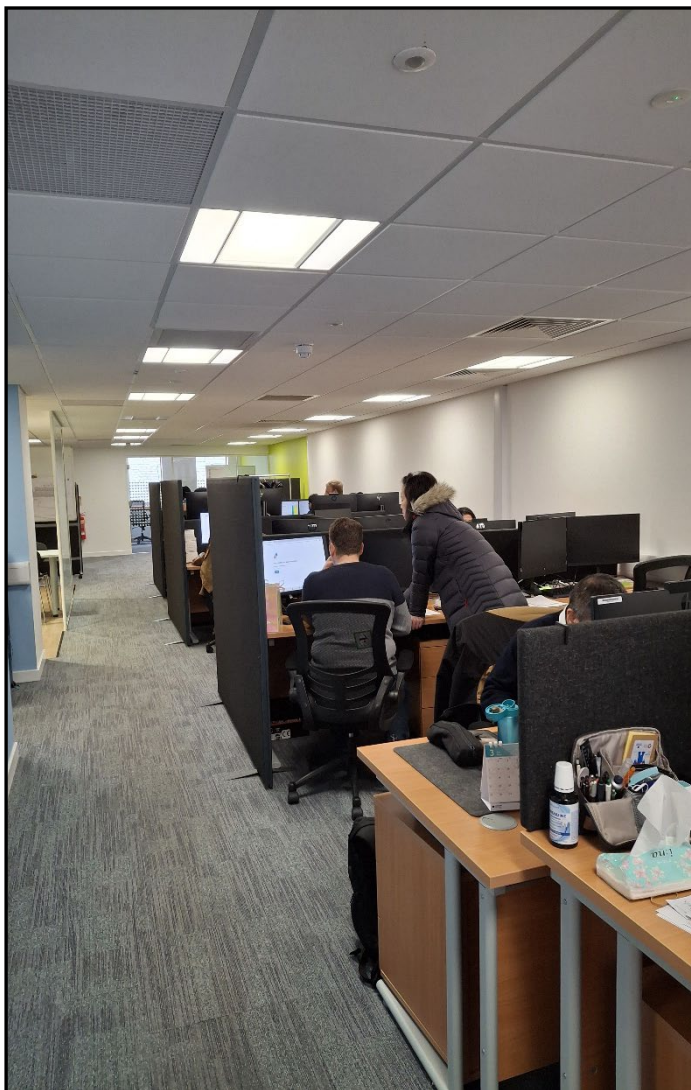
[property.offers@highland.gov.uk](mailto:property.offers@highland.gov.uk)

Please clearly state **FIRST FLOOR, CHURCH STREET, INVERNESS** in the subject line of your email.

All applications properly received by 12 noon on the closing date will be opened and processed.

The property is offered for let in its current condition and Highland Council can give no warranty as to its condition or the services contained therein. The information contained in these particulars does not form part of any offer or contract. Descriptive details including plans & photographs are indicative only and not guaranteed.  
Prepared 31/03/2026

# First Floor Office Space, Church Street, Inverness, IV1 1DY



**INDICATIVE PLAN ONLY. NOT TO SCALE.**

Reproduced from the Ordnance Survey Mapping with the permission of the Controller of Her Majesty's Stationery Office.  
© Crown Copyright. Unauthorised reproduction infringes Crown Copyright and may lead to civil proceedings.  
The Highland Council 100023369