

Appendix 2: Community Workshop, Community Drop-In, School Event & Meetings

These community events took place on the 4th and 5th June 2024

Community engagement summary

- 171 community survey responses, 9% of residents
- 36 residents at 2 community events
- 28 children at the local school took part in a aspirational planning session
- 56 business, community organisations, landowners and other key stakeholders contacted
- Information distributed via door to door deliveries, posters, flyers, social media and websites.

Numbers

26 at workshop

10 at drop-in

6 at steering group

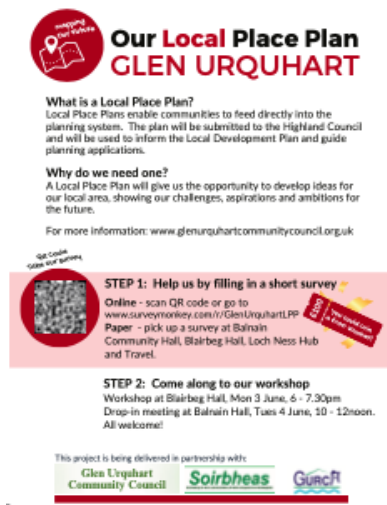
28 P7 children at school event

1. Community Survey – June 2024

Detailed results of the survey can be found in appendix 3.

Key points:

- The natural environment is highly valued by 95% of the community respondents, the woodlands, the walks and the lack of pollution.
- The safe environment for families to raise children and give them a good education was recognised by 77% of people.
- 75% of people felt they had good access to health care.
- Respondents were less positive about shopping facilities, recreation facilities, public transport and job opportunities.
- Minority groups and teenagers were defined as the least supported groups in the community. Comments indicated that young people who aren't sporty have very little activities to access.
- 79% of respondents wanted a more frequent bus service, including mornings and evening. More capacity is needed during peak holiday times, when visitors and locals use the service.
- 60% of respondents wanted to see improved road safety. There were many comments about improved pavements and cycle paths to separate walkers and cyclists from road traffic.
- The community would like to see less reliance on tourism for employment, suggesting studios, workshops and small industrial units could help diversify the local economy.
- Many comments suggested the local shops were not adequate for their needs (Scotmid too small), requesting more variety e.g. butchers, farm shop, beauty, etc.
- Access to Loch Ness was a recurring theme, requested both for locals and as a facility to improve the experience of visitors and boost the local economy.
- 64% of respondents believe the area needs more affordable housing.
- A local swimming pool and community gym were the most popular requests for improving leisure facilities. The old shop site was identified as a possible location.
- The natural heritage of the landscape is highly valued, with concern about new buildings, deer and neglect having a negative impact on it.

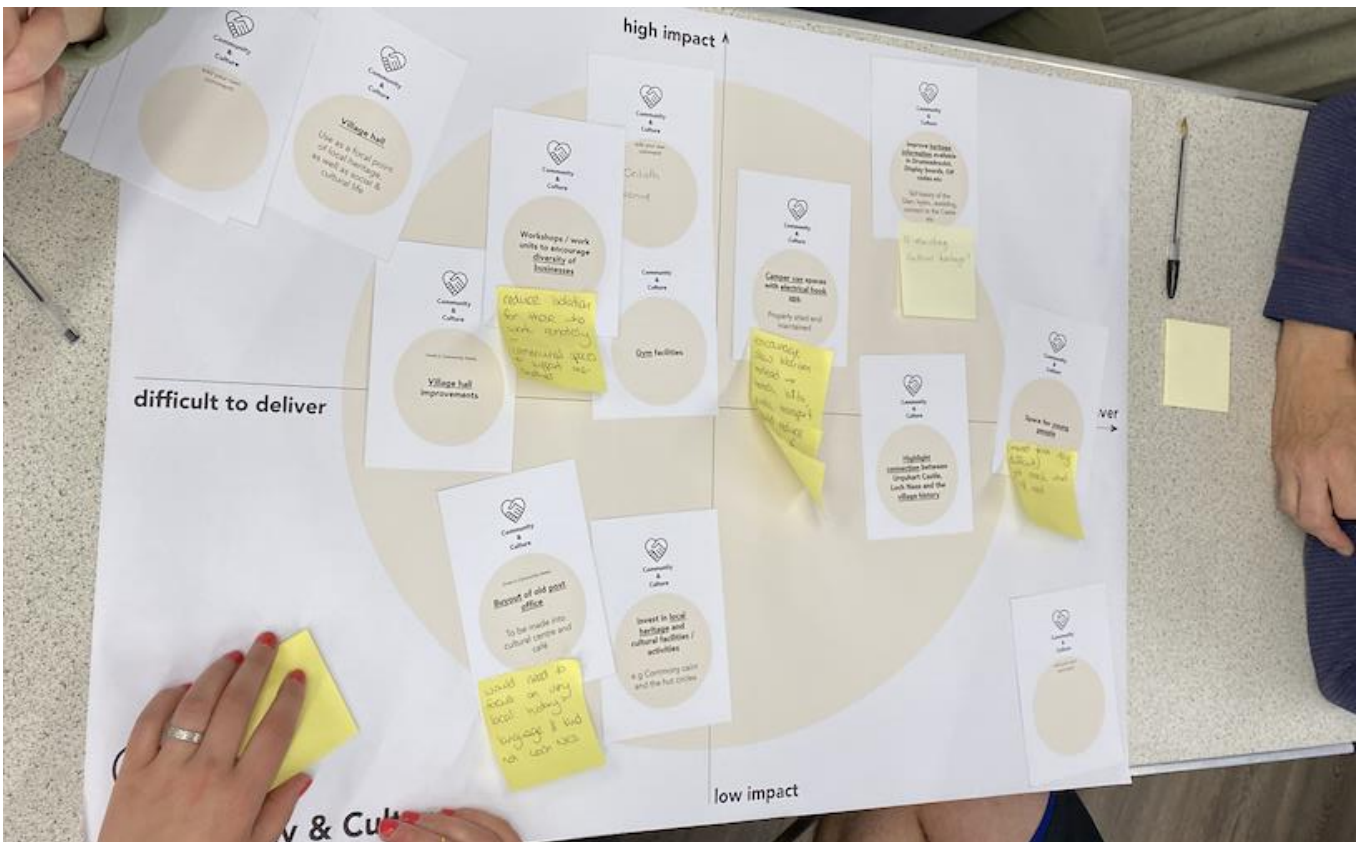


Promotional tools were used throughout (via hard copy and social media) to encourage as many people as possible to participate in the engagement process.

2. Community Workshop – 4th June

The community workshop was attended by 26 people, who contributed their ideas to two main activities:

- **Themes** - themes from survey were placed on a graph showing the deliverability / impact graph on your table.



- **Mapping exercise** – marking their preferences for the location of new buildings, paths, activities etc.



3. Community Drop-In – 5th June

4. Steering Group Meeting – 5th June

SKS met with the steering group to review and add detail to the maps produced at the community workshop. The areas discussed are listed below:

a. Community Growing

The following areas were identified as potential community growing sites:

- Piece of land behind the suds pond
- Piece of land outside the care home
- Patch of land behind the coop
- West end garage site could be good composting, wood store etc.
- Others marked on the plan
- Playground in Milton
- Field space in Milton (privately owned)

b. Village Meadows

The meadows in the village were discussed. The group wish to protect the “Highland Village” heritage of the meadows, but also have ideas of what can be done with them:

- Example of Balmacara Estate, run by the National Trust for Scotland (NTS), who manage meadows as hay meadows, producing one crop a year at the end. This encourages wild flowers and birds.
- Community solar panels – could have sheep grazing around them.
- Need to retain some of it for parking for the highland games.

c. Parking

Expanding the parking by the hub in Drumnadrochit was discussed. The adjoining land is either Springfield or Donny Fraser’s land.

d. Housing & Services

Sites for small scale community housing project were discussed:

- West end garage, near Milton - problem with petrol tanks still there.
- Suds pond area - problem with access
- DR06 - Community owned housing - referenced the Fort Augustus community housing project
- DR06 - potential site for new childcare centre.

e. Other

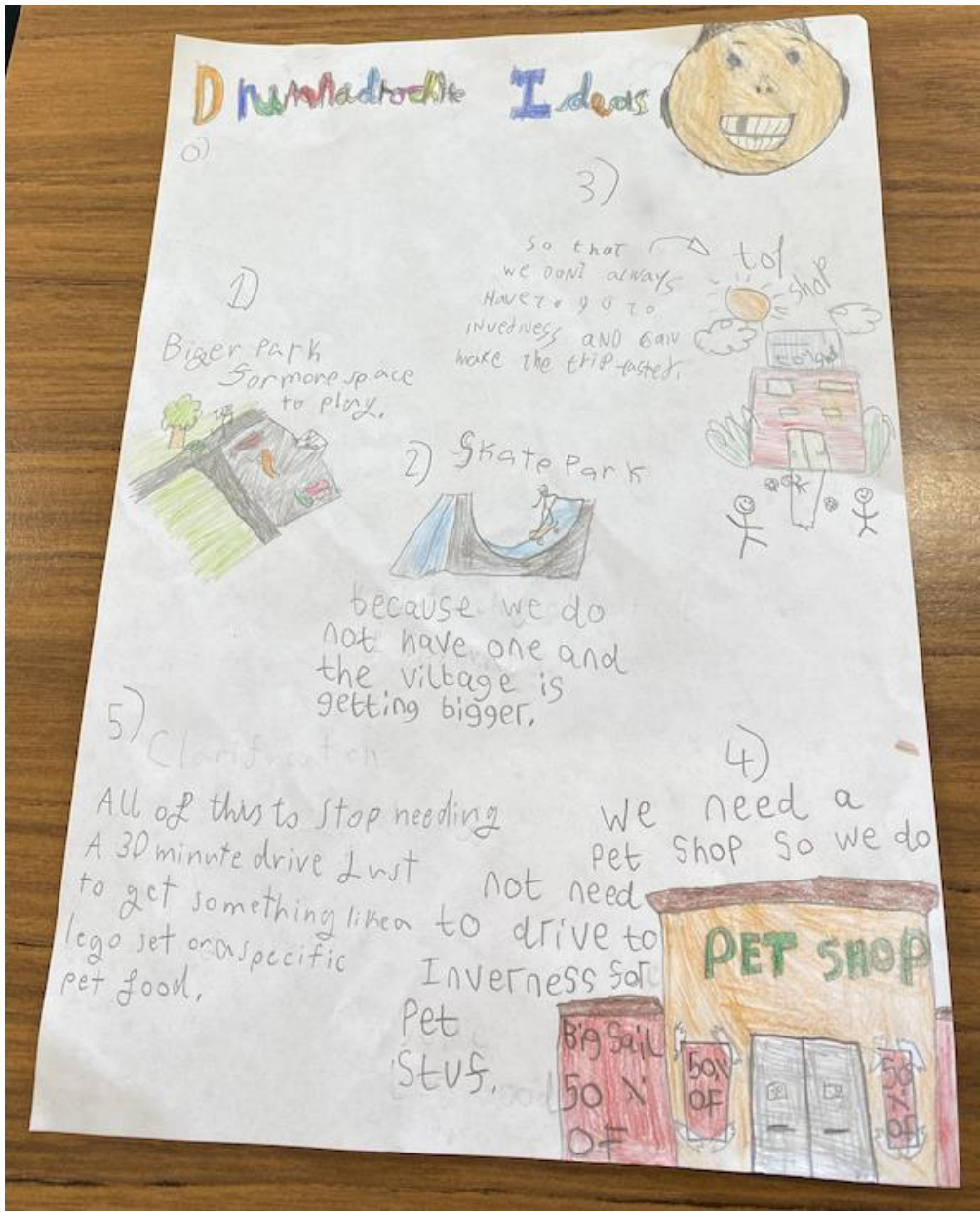
- Church (Church of Scotland) under threat of closure - possible to be a multi-centre for heritage and other uses?
- More EV charging points needed. Only one charger at the hub.

5. School Workshop - 6th June

SKS visited the P7 class at Drumnadrochit Primary School. SKS gave a short presentation to the class before class teams spoke about their ideas of the local area.

The biggest request from the group was a local swimming pool where they can learn to swim. The children spoke eloquently about the need for local children to learn to swim, with their close proximity to the water. Local children often “hang-out” by the Cover which is on the water. They felt transport to Inverness (the Aquadome is the nearest pool), cost and waiting lists was a barrier for a lot of people.

Some of their notes are shown in the image below:



Other ideas are listed below:

Transport:

- Hard to get buses into town
- No night bus, leads to drunk driving in the village
- Less driving / cars.

Shops & services:

- Need a place to buy video games.
- Toy shop
- Pet shop for pet food etc
- Smoothie shop – taste nice and they are healthy – Fuel smoothies.
- Vet - near the pharmacy. The vet in Inverness is too far away.
- Public toilets near the shops – e.g. near Scot mid
- Public toilets near the play park.

- Gym

Parks & Leisure:

- Remove the basketball court surface to extend the play park.
- Bigger park more space to play.
- Skate park – to have fun and play on the bikes
- Basket ball hoops – there is a court but no hoops.
- Fix the mini astro pitch – behind the shinty pitch.
- Leisure centre – where the pharmacy is. Some people don't have cars, don't drive, so a local leisure centre would give more people access to health and fitness.
- Pump track
- Mini golf – behind the exhibition centre – there is one that it needs fixed