

Spean Bridge, Roy Bridge and Achnacarry
Local Place Plan
2026
Part 2: Appendices

Contents

Page	
3	Appendix 1 Detailed topographic maps of the Community Council Area
7	Appendix 2 Land Usage
9	Appendix 3 Settlements
7	Spean Bridge
12	Roy Bridge
13	Gairlochy and Mucomir
15	Achnabobane and Highbridge
17	Tulloch and Fersit
18	Stronaba
19	Appendix 4 - Key maps from 2012 Highland Wide Local Development plan
20	Vision and Strategy
21	Proposals

Figures

Page	
3	Appendix 1 - Detailed topographic maps of the Community Council Area
4	A1.1 Western area
5	A1.2 Northern area
6	A1.3 Southern area
7	Appendix 2
8	A2.1 Habitat and Land Usage
9	Appendix 3 - Settlements
10	A3.1 Spean Bridge maps and satellite view
11	A3.2 Views of Spean Bridge
12	A3.3. Roy Bridge
13	A3.4 Map of Gairlochy and Mucomir
14	A3.5 Views of Gairlochy
15	A3.6 Map of Achnabobane and Highbridge
16	A3.7 View of Achnabobane
17	A3.8 Nature Conservation order for Achnabobane
18	A3.9 Map of Stronaba
19	A3.10 Map of Tulloch and Fersit
20	Appendix 4 - Key maps from 2012 Highland-Wide Local Development Plan.
21	A4.1 Vision and Strategy
22	A4.2 Proposals

Appendix 1

Detailed Topographic Maps of the Community Council Area

Fig. A1.2

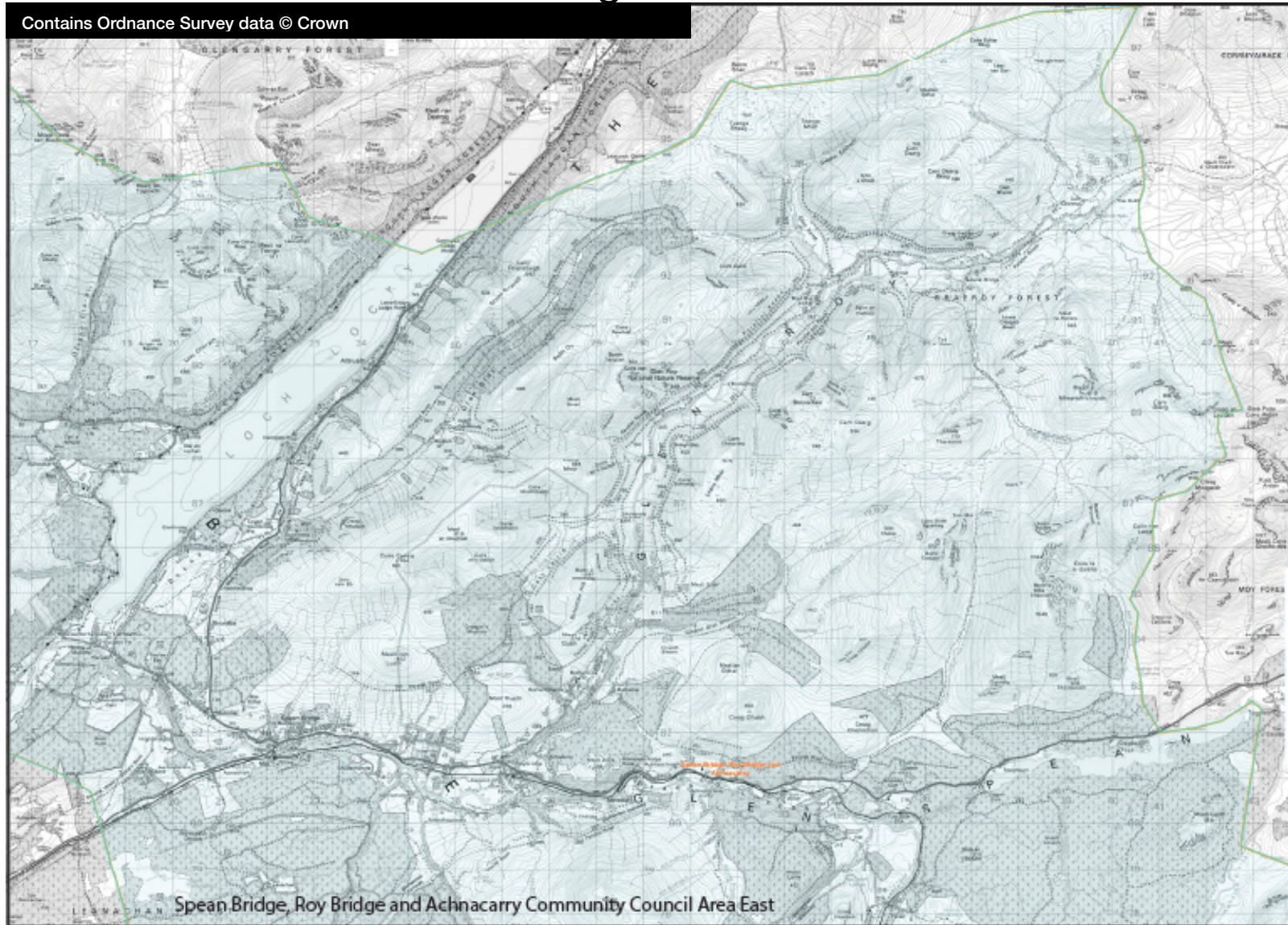
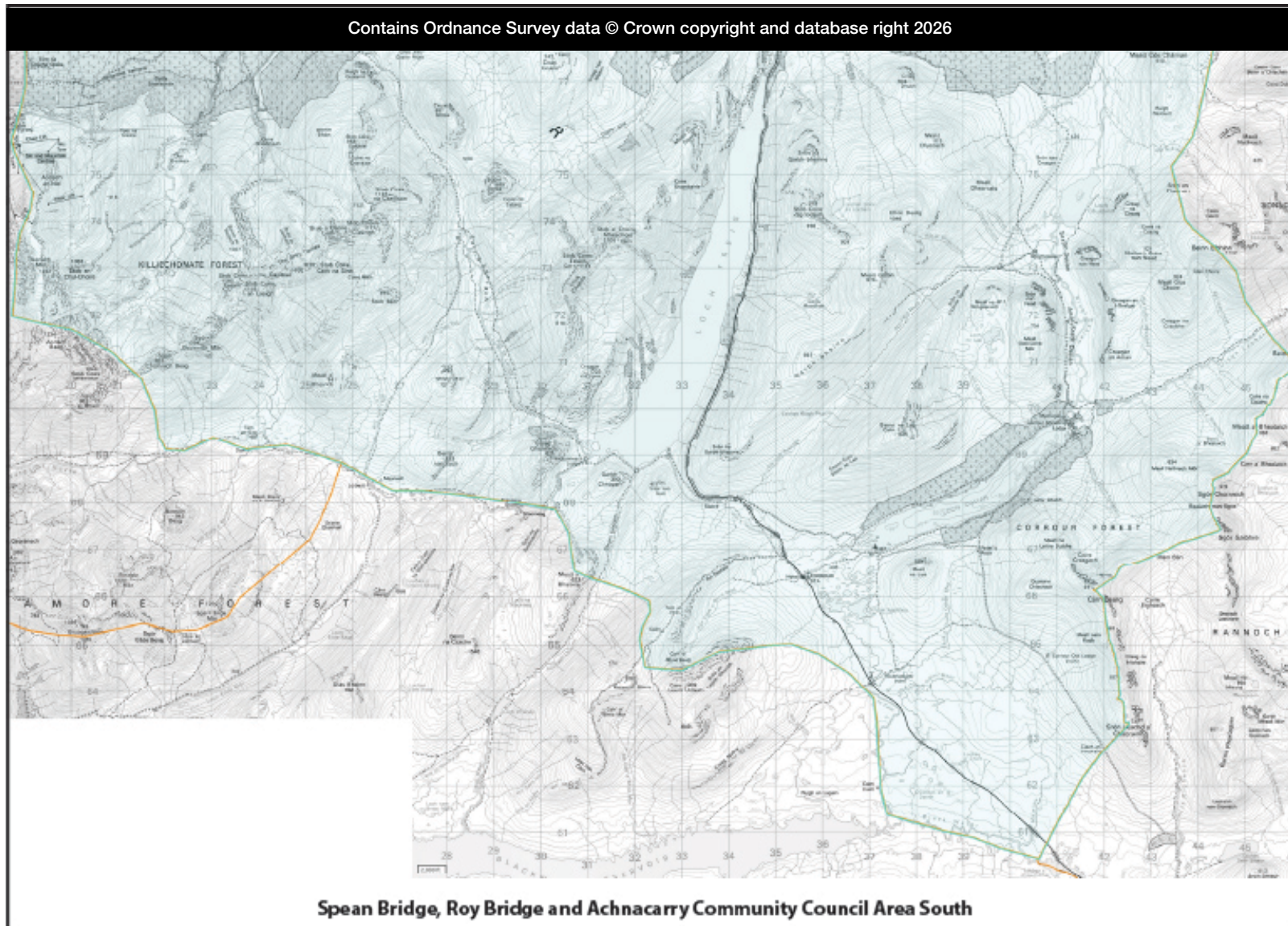


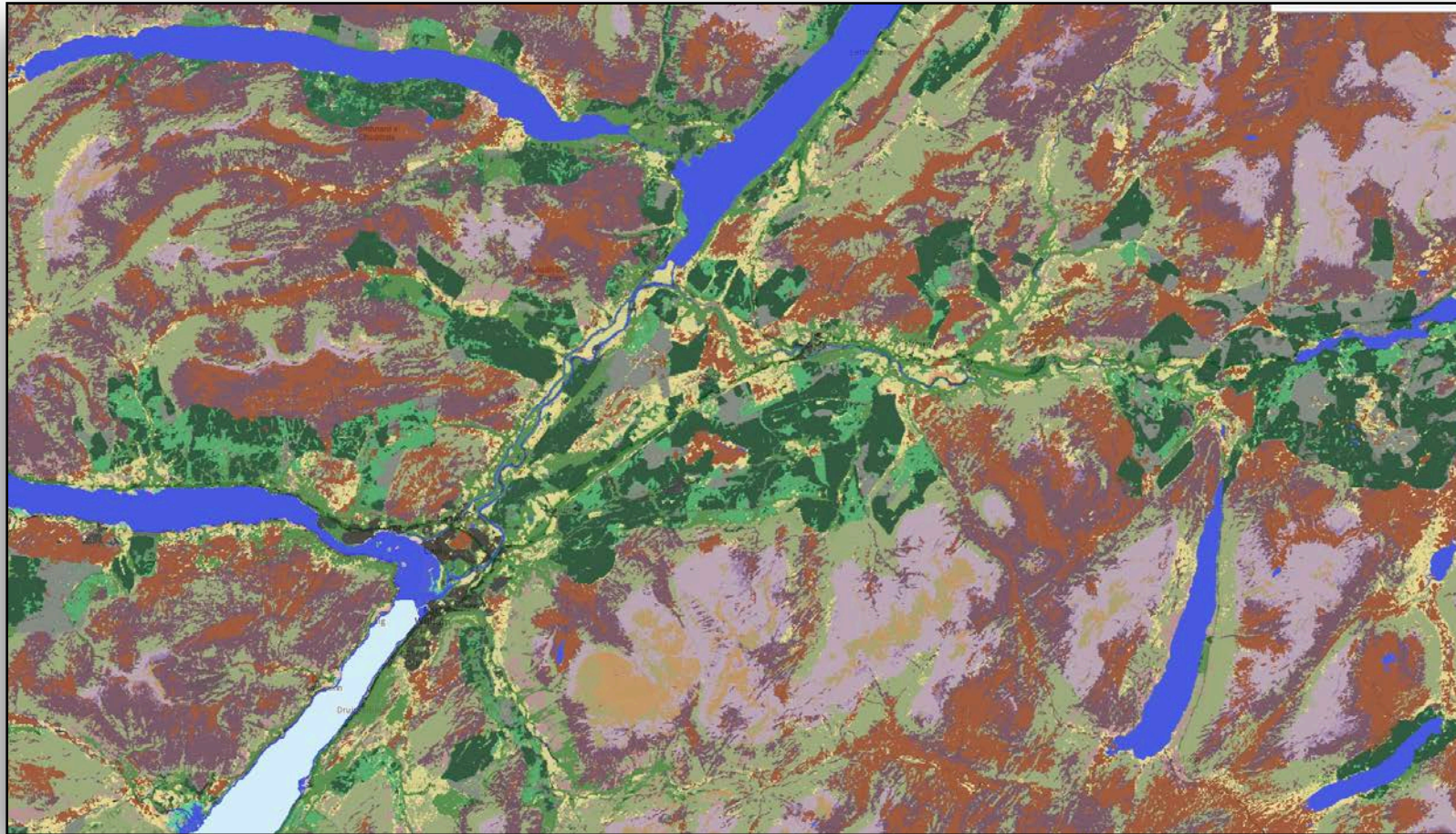
Fig. A1.3



Appendix 2

Habitat and Land Usage

Habitat and Land Cover Map 2022 EUNIS Level 2



- ✗ NoData
- C: Surface standing and running waters
- D1: Raised and blanket bogs
- D2: Valley mires, poor fens and transition mire
- D4: Base-rich fens and calcareous spring mire
- E1: Dry grasslands
- E2: Mesic grassland
- E3: Seasonally wet and wet grasslands
- E4: Alpine and subalpine grasslands
- E5: Woodland fringes and clearings and tall fc
- F2: Arctic, alpine and subalpine scrub
- F3: Temperate and mediterranean-montane s
- F4: Temperate shrub heathland
- F9: Riverine and fen scrubs
- G1: Broadleaved deciduous woodland
- G3.4: Scots pine woodland
- G3.F: Highly artificial coniferous plantations
- G4: Mixed deciduous and coniferous woodlanc
- G5: Lines of trees, small anthropogenic woodl
- H2: Screens
- H3: Inland cliffs, rock pavements and outcrop
- I1: Arable land and market gardens
- J: Built-up
- O: Bare field
- OW: Windthrow
- A2: Littoral sediment (predominantly saltmarsl
- B1: Coastal dunes and sandy shores
- B2: Coastal shingle
- B3: Rock cliffs, ledges and shores

Fig. A2.1 Habitat and Land Usage Map

Appendix 3 Settlements

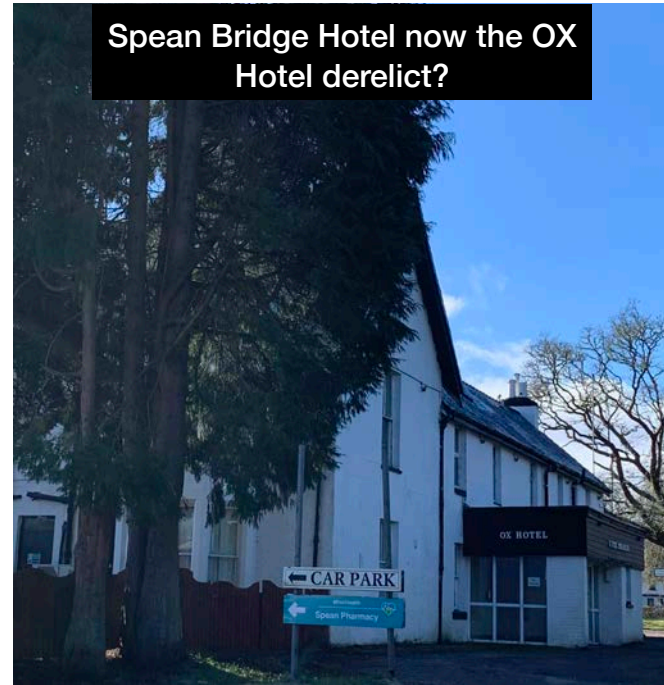
Figure A3.1 Spean Bridge



Google Earth, Airbus Industries 2026



Mhor Pharmacy Spean Bridge



Spean Bridge Hotel now the OX Hotel derelict?



[Redacted]

Fig. A3.3 Roy Bridge



Contains Ordnance Survey data © Crown copyright and database right 2026



Google Earth, Airbus Industries 2026

Fig. A3.4 Gairloch and Mucomir





Spean Bridge , Roy Bridge and Achnacarry Local Place Plan

Fig. A3.5 Gairlochy

Version: Saturday, 7 March 2026

Fig. A3.6 Achnabobane and High Bridge

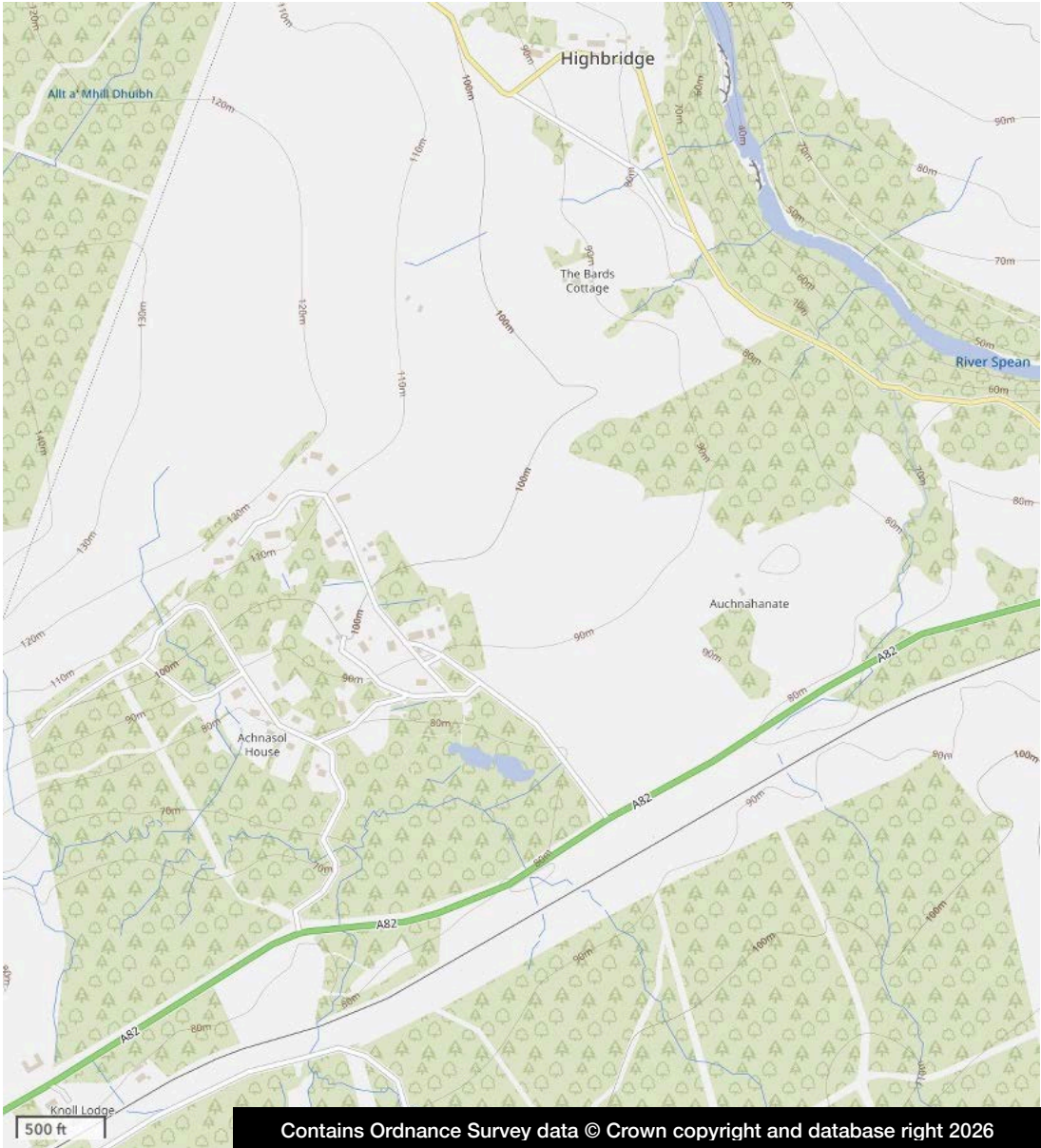


Fig. A3.7 View of Achnabobane

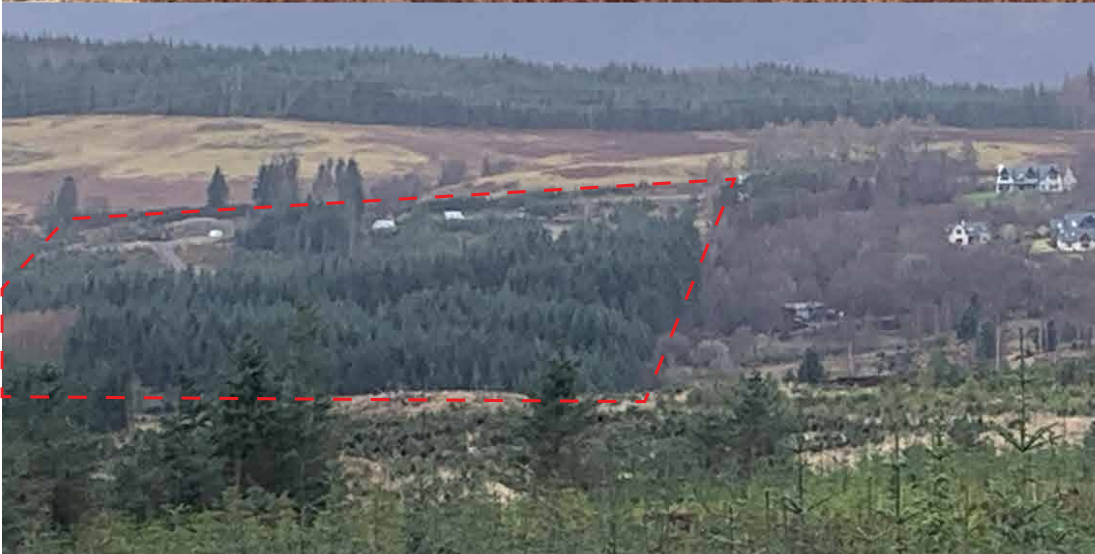
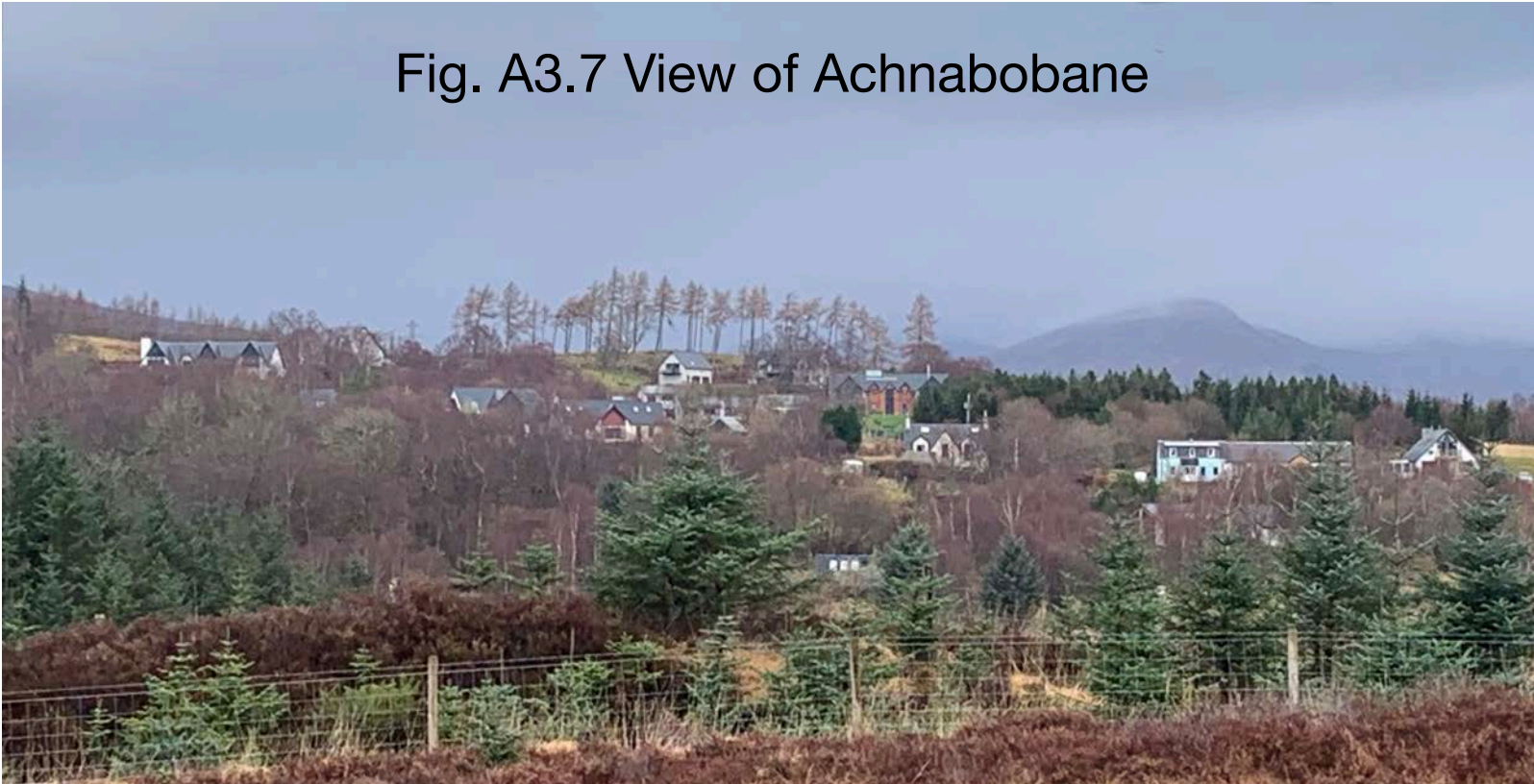


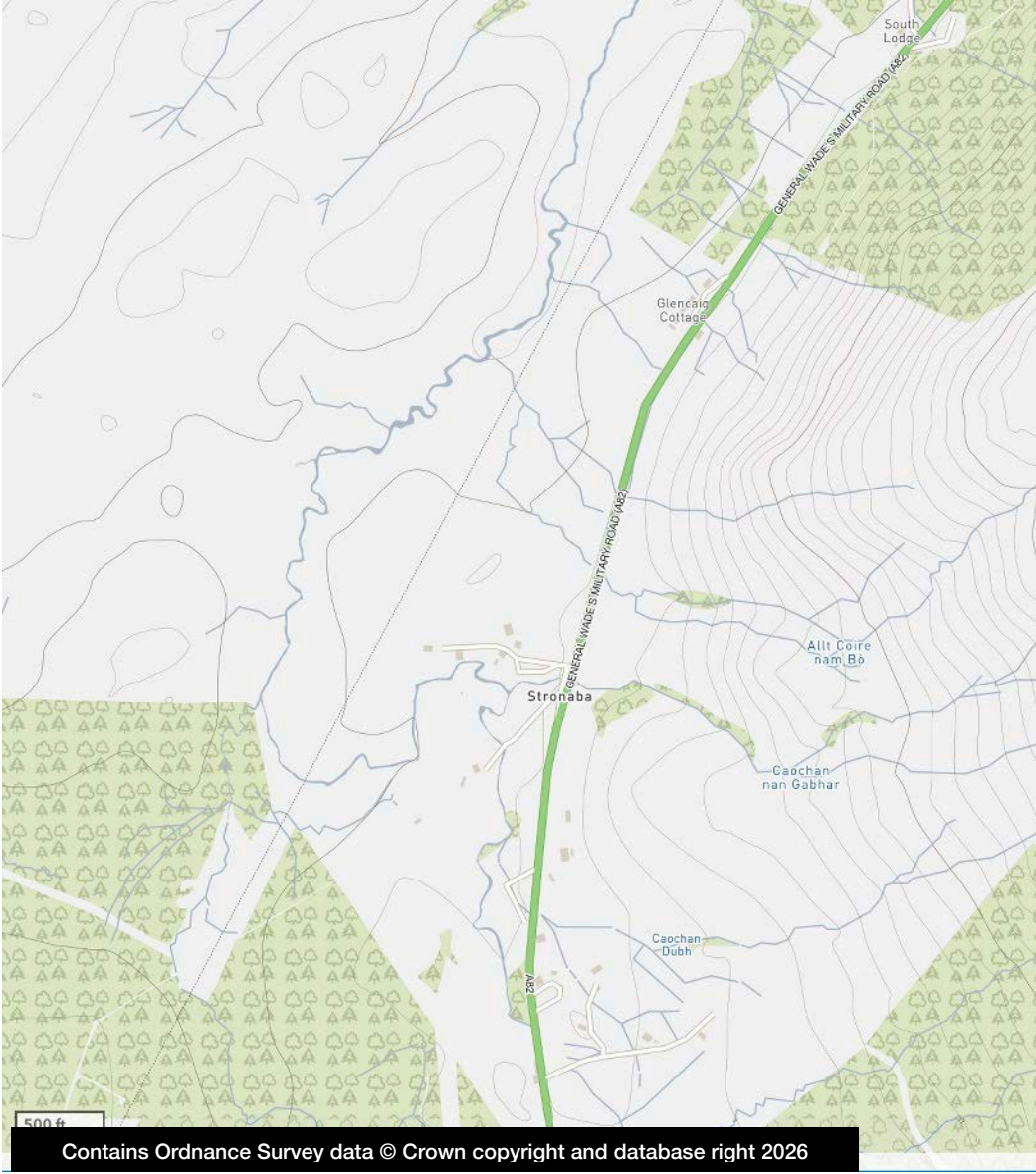
Fig. A3.8
Achnabobane Nature
Conservation Order

The red dashed area on the hillside is the approximate area of the Scottish Government Nature Conservation Order for Achnabobane. It is difficult to know total numbers but since 2009, and particularly over the period 2019-2025 something like 100+ small plots were sold, many following unauthorised construction of hard standings all on the SSSI.

Fig. A3.9 Tulloch and Fersit



Fig. A3.10 Stronaba



Appendix 4

Key Maps from 2012 Highland-Wide Local Development Plan

