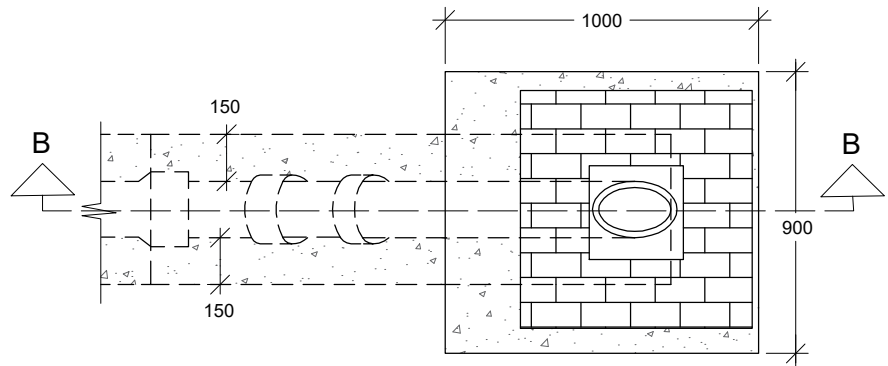
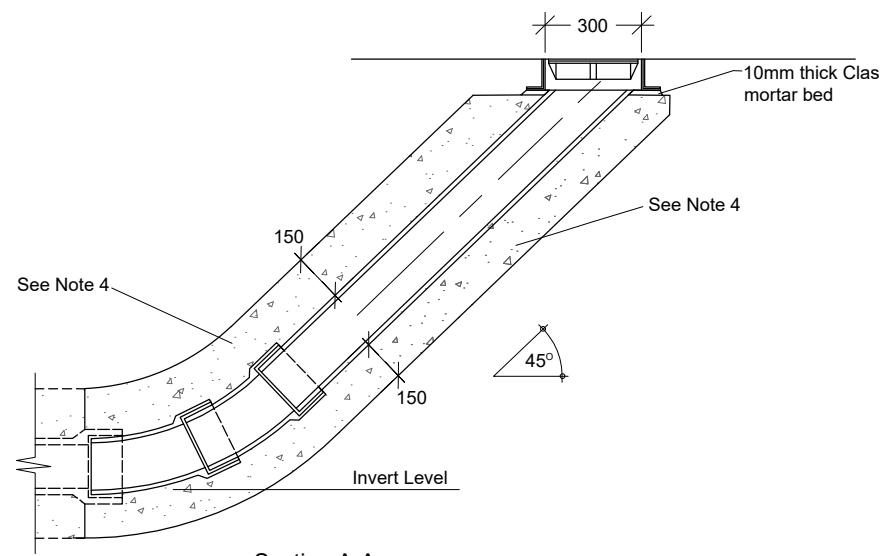


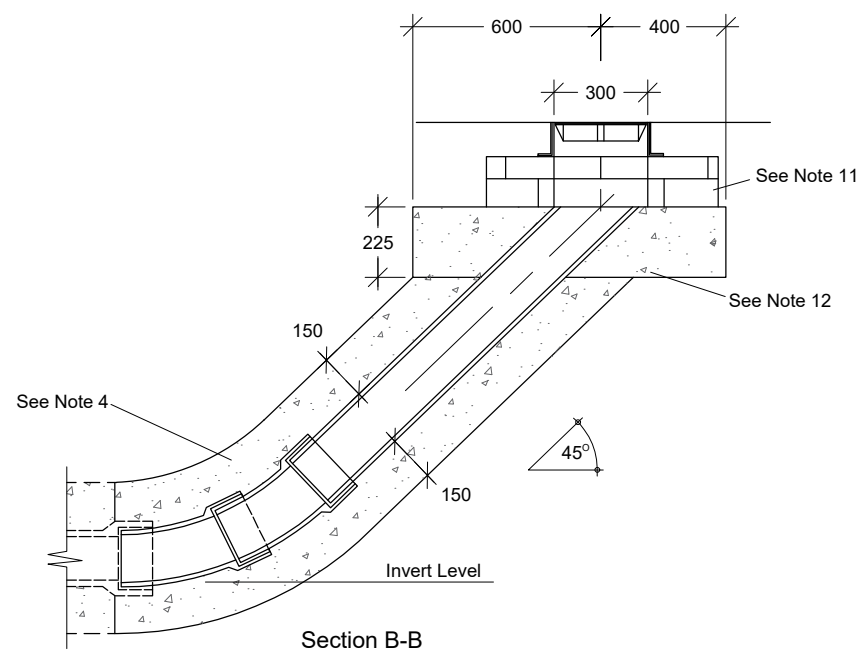
Plan



Plan



Section A-A



Section B-B

Rodding eye type 1  
not accessible to vehicular loadings

Rodding eye type 2  
accessible to vehicular loadings

**Notes**

- © Crown Copyright and database rights 2023 AC0000849432
  - 1. All dimensions in millimeters unless otherwise stated.
  - 2. The specification referred to in this drawing is the Specification for Highway Works (SHW) published by T.S.O. (The Stationery Office).
  - 3. These rodding eyes are for use where pipe dia. does not exceed 225mm.
  - 4. The drop pipe and bend surround to be Type Z: 150mm thick mix ST2 concrete to SHW Cl 503.3(ii).
  - 5. For all pipes except corrugated, the nearest joint in the main pipe shall form of an articulated section and be not more than 500mm from the bend.
- Rodding eye Type 1:
- 6. To be used only in footpath verges and central reserves. It is not to be used in situations accessible to regular vehicular loadings.
  - 7. The upper surface of the concrete surround shall be smooth, to Class U3.
  - 8. All mortar to be designation (i).
  - 9. Rodding eye cover and frame complying with BS 5834:Part 2:2011 and BS EN 124:1994 to be Class B125, 300x300mm clear opening. Cover set flush or a maximum of 5mm below the finished surfacing level or ground level.
  - 10. An alternative design of rodding eye cover may be used with THC approval.
- Rodding eye Type 2:
- 11. 1 to 2 courses of HD Type Class B clay engineering brick to BS EN 771-1:2003, or concrete bricks to BS EN 771-3 & 2:2003, 225mm width to be provided to adjust final level of rodding eye cover.
  - 12. Rodding eye base to be cast in-situ, in mix ST4 concrete to SHW Cl 2602. Finish shall be smooth, to Class U3.
  - 13. The drop pipe shall be cast into chamber base.
  - 14. All mortar to be designation (i) except that the cover frame shall be bedded on epoxy resin mortar.
  - 15. Rodding eye cover and frame complying with BS 5834:Part 2:2011 and BS EN 124:1994 to be Class D400, 300x300mm clear opening.

Revision Details	Drawn by	Checked by	Check Date	Scale



Project: Standard details. Series 0500:  
 Drainage and service ducts

Title: **Rodding eye**

Scale (at A4): **Not to scale**

Drawn	JC	Date	02/2024
Checked	CHK	Date	02/2024

Drawing No:	SD/0500/12	Rev:	1
-------------	------------	------	---