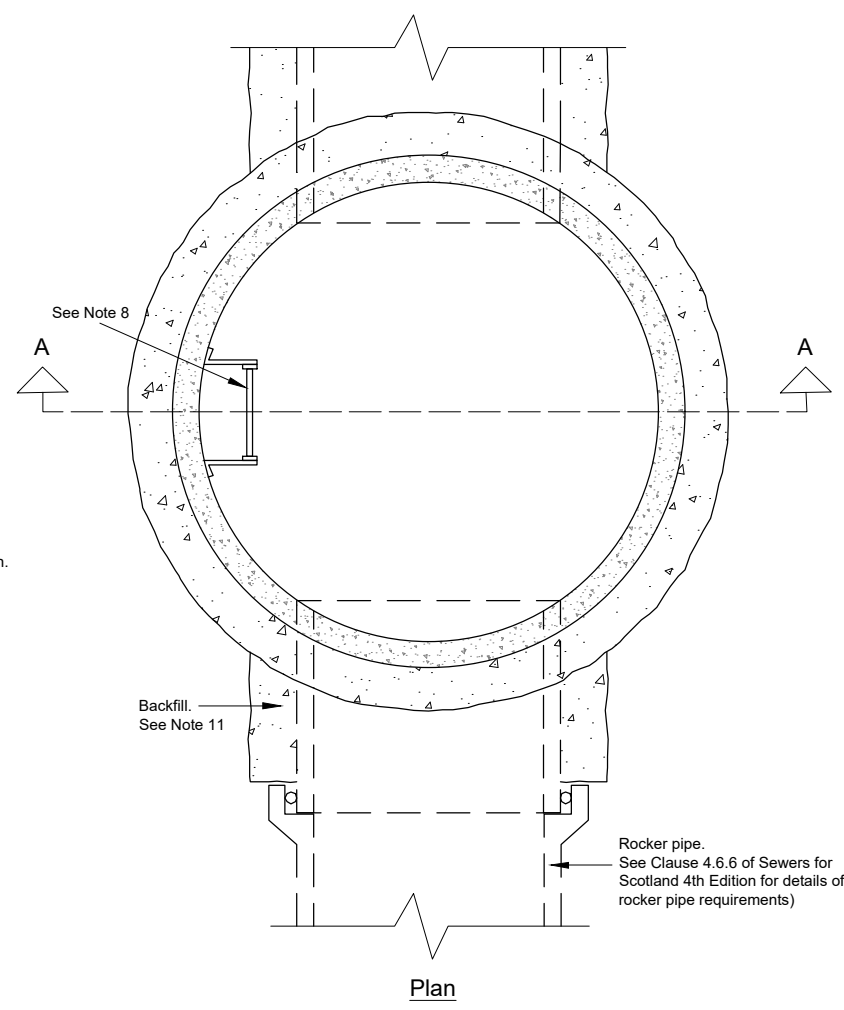
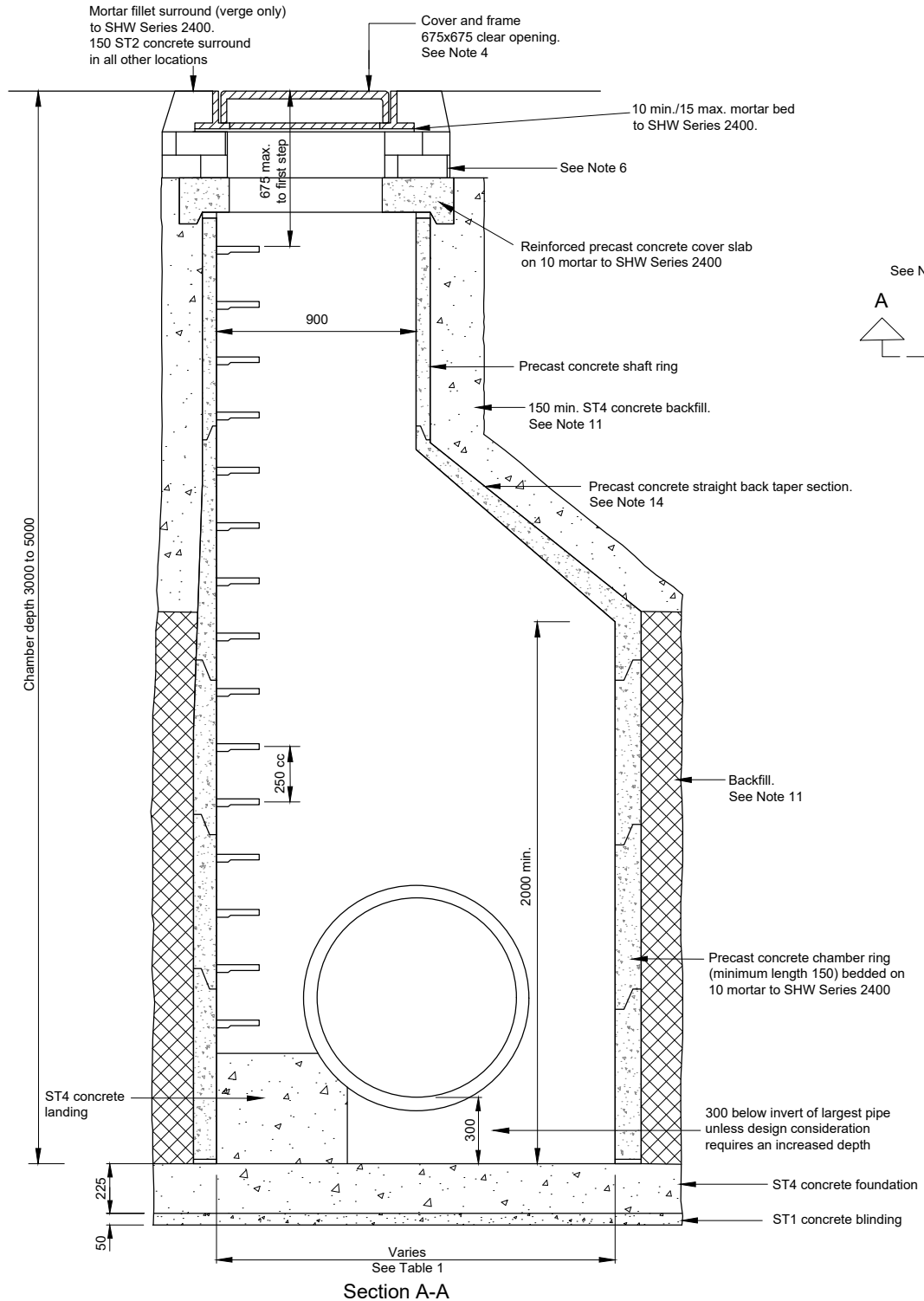


- Notes**
- All dimensions in millimeters unless otherwise stated.
  - The specification referred to in this drawing is the *Specification for Highway Works (SHW)* published by T.S.O. (The Stationery Office).
  - Catchpits shall be positioned so that no part of the structure is under the line of kerbs.
  - Cover and frame to SHW CI 507.9 and BS EN 124:1994. Surface level/cover tolerance shall be +6 -15 in paved areas, -15 min. -50 max. in verges.
    - D400 for carriageways
    - C250 for car parks, footway next to carriageway or similar
    - B125 for remote footways, pedestrian areas where it is unlikely to receive any vehicular traffic
  - Precast concrete chambers shall comply with BS 5911-3 and BS EN 1917:2002.
  - 2-3 courses 225 Engineering Brickwork Class B to SHW CI 507.
  - Mortar to SHW Series 2400 or a proprietary sealant shall be used in all joints between concrete units.
  - Double step rungs in accordance with BS EN 13101. See SHW CI 2.27.1 for double step details.
  - Finish to internal concrete shall be F1 on formed surfaces and U2 on unformed surfaces in accordance with SHW CI 1708.4.
  - All voids beneath the catchpit structure to be backfilled with ST1 concrete.
  - Precast concrete chambers shall be backfilled using General Fill (Table 6/1 SHW) or 150 ST2 concrete surround to SHW CI 507.7. ST4 concrete surround 150 min. shall be used at access shafts.
  - Ends of pipes shall be neatly built into the chamber and finished flush with mortar to SHW Series 2400.
  - Pipe level difference permitted inside chamber. The outlet may be 50mm lower than the inlet.
  - Precast concrete heavy duty cover slabs can be used in place of straight back taper chamber section.

Revision	Details	Drawn by	Checked by	Date	Surf.



Project	Standard details. Series 0500: Drainage and service ducts		
Title	Catchpit type 2		
Scale (at A4)	Not to scale		
Drawn	JC	Date	02/2024
Checked	CHK	Date	03/2024
Drawing No:	SD/0500/17	Rev:	1



**Table 1: Diameter of Catchpit**

Diameter of largest pipe in chamber	Internal diameter of chamber
Less than 375	1200
375 - 450	1350
500 - 700	1500
750 - 900	1800

**Catchpit type 2 - precast concrete construction**