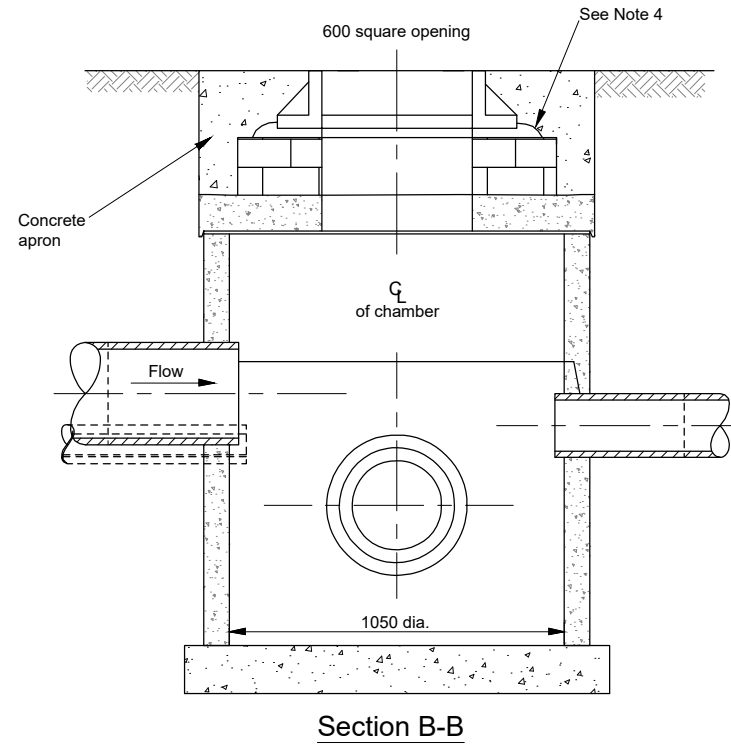
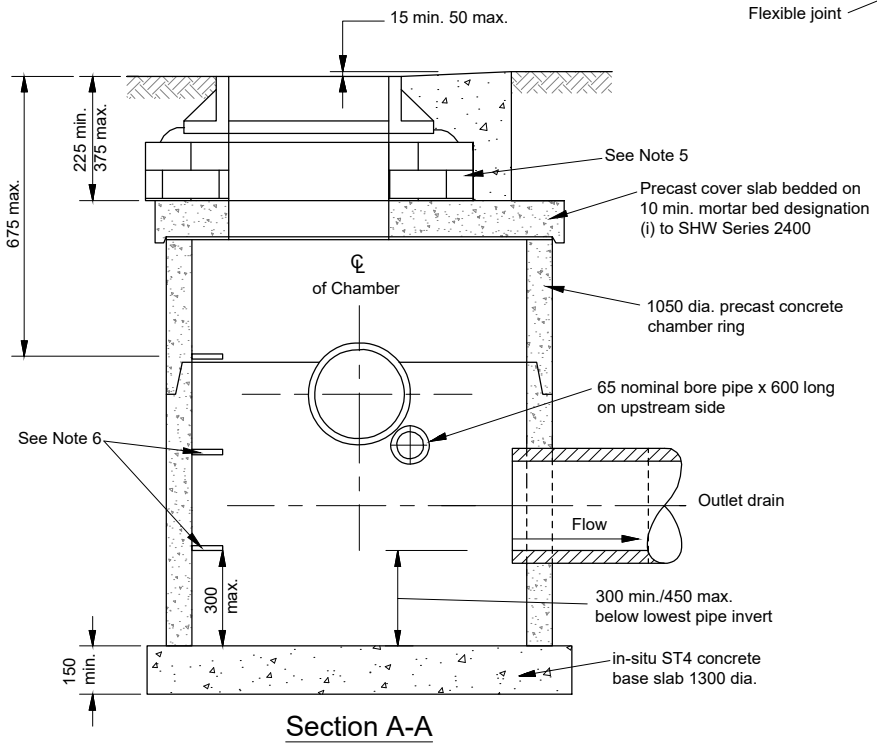
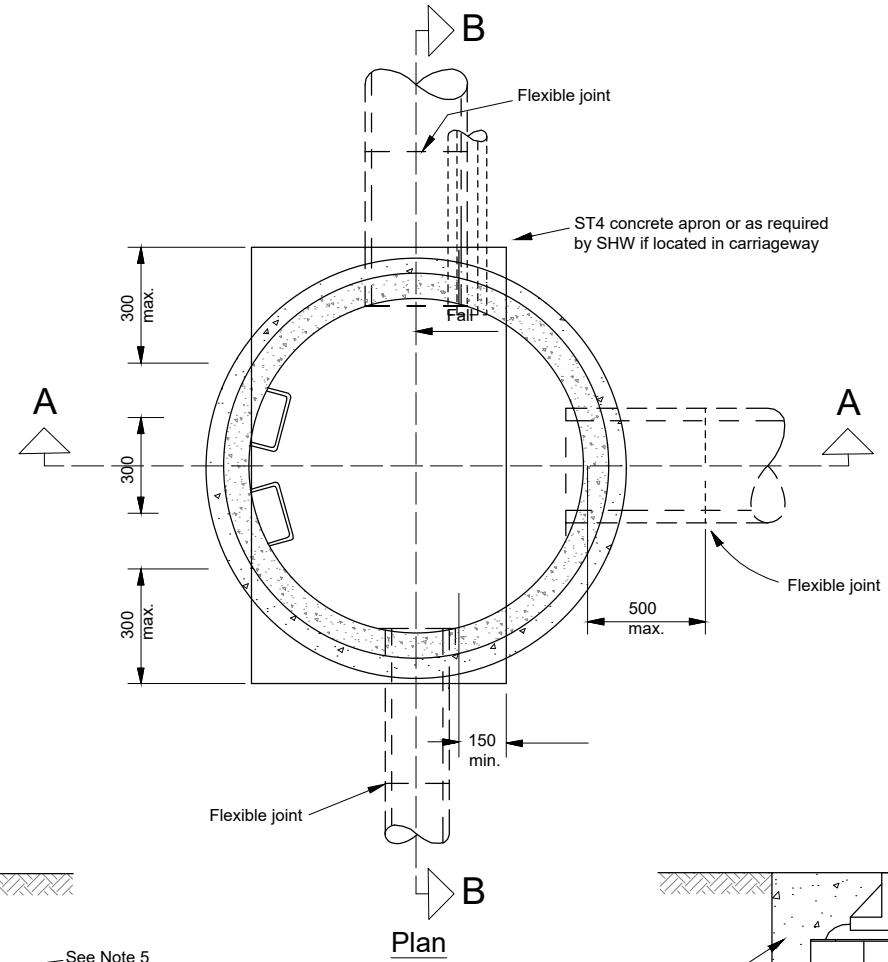



- Notes**
- © Crown Copyright and database rights 2023 AC0000849432
- All dimensions are in millimetres unless otherwise stated.
 - The specification referred to in this drawing is the *Specification for Highway Works (SHW)* published by T.S.O. (The Stationery Office).
 - Catchpit to be constructed in precast concrete to BS EN 917 and BS 5911-3.
 - Designation (i) mortar bed to grating and frame (10 min. 20 max.) to SHW Series 2400.
 - 1-3 Courses of Class B engineering bricks to SHW CI 507 (including CI 507.3, CI 507.18 and CI 2406.3) or precast concrete adjusting unit to BS EN 1917 and BS 5911-3.
 - Single or double manhole steps (single shown) at 250mm or 300mm c/c vertically, to SHW sub-Clause 507.6. Where double steps are installed, these shall be installed in a single alignment with other such steps.
 - Pipe to be built into catchpit to drain lower portion of trench. Pipe is to be placed above any concrete bed to filter drain.
 - The gully top is to be set as dimensioned below the adjacent:
 - hard shoulder (for verges)
 - hard strip (for dual 2 central reserve)
 - finished level in other locations.
 - See SHW, sub-Clause 507.7 regarding backfilling/surround to chamber.
 - All ST concrete shall be to SHW CI 2602.



Revision Details		Drawn by	Checked by	Check Date	Check Sufx.	
 The Highland Council Comhairle na Gàidhealtachd						
Project: Standard details. Series 0500: Drainage and service ducts						
Title: 1050 catchpit chamber						
Scale (at A4): Not to scale						
Drawn	JC	Date	02/2024			
Checked	CHK	Date	03/2024			
Drawing No.: SD/0500/19						
					Rev:	1