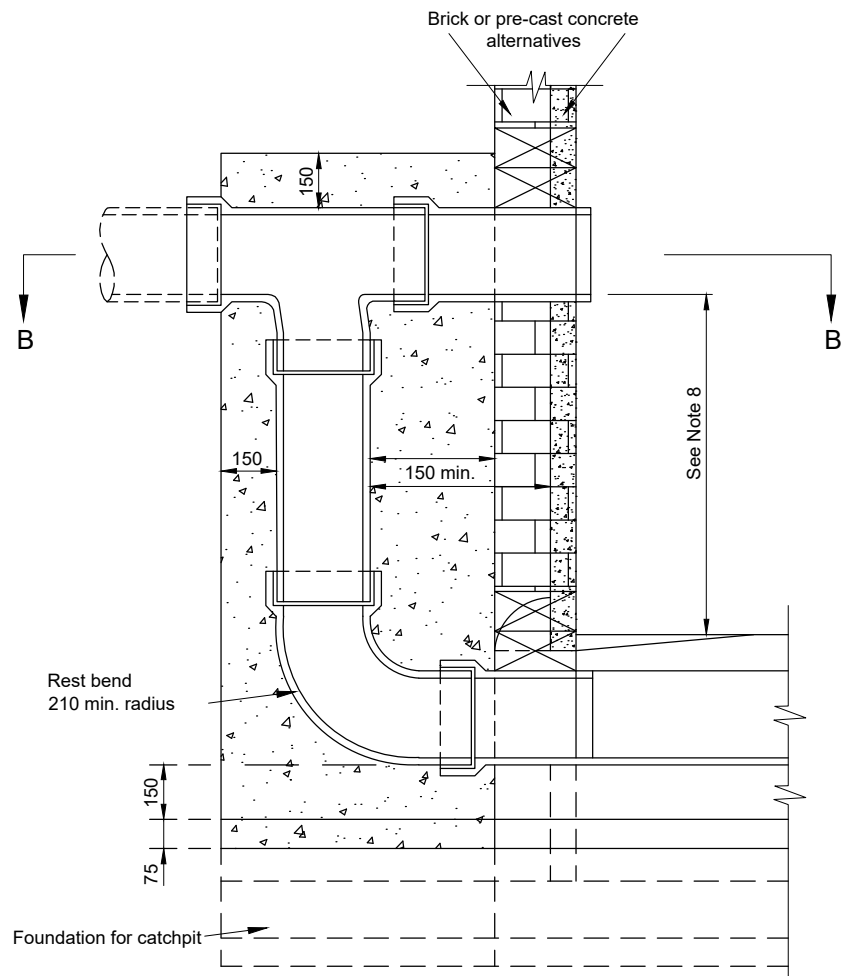
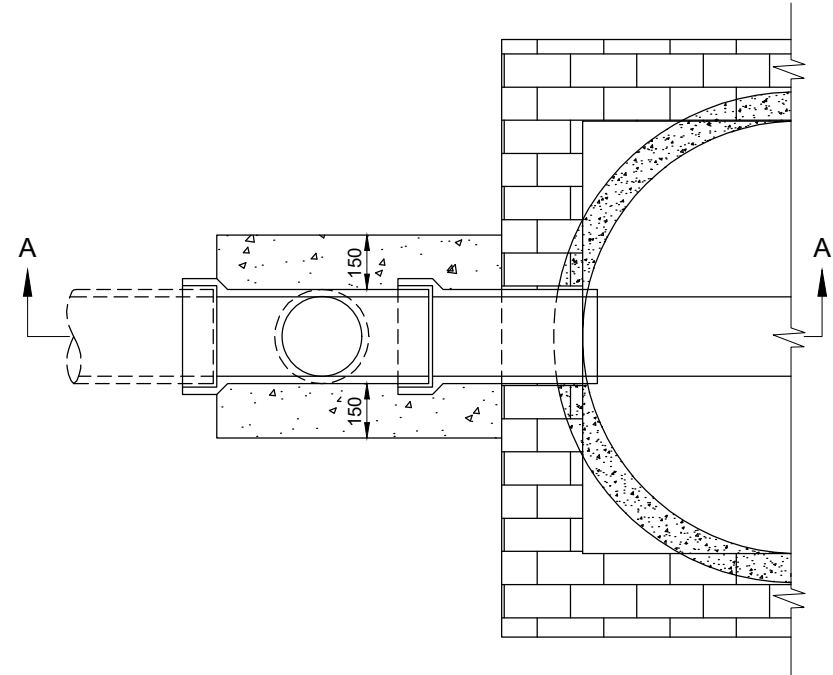


Notes
 © Crown Copyright and database rights 2023 AC0000849432

- All dimensions are in millimetres unless otherwise stated.
- The specification referred to in this drawing is the *Specification for Highway Works (SHW)* published by T.S.O. (The Stationary Office).
- Tumbling bay junction, drop pipe and bend to be surrounded with 150mm thick mix ST4 concrete.
- In pre-cast concrete chambers openings in rings shall not be wider at any point perpendicular to the pipe direction, than the outside diameter of the pipe +20mm.
- In brick chambers, pipes shall be built into walls flush with the inside face, and with the provision of a single ring brick relieving arch where pipe diameter exceeds 150mm, or a double ring arch where pipe diameter exceeds 225mm.
- In pre-cast concrete chambers pipes to be built into chamber rings such that the pipe end is not less than 20mm nor more than 50mm from the nearest point on the inside face of the chamber ring.
- For all pipes except corrugated, the nearest joint in the pipeline shall form part of an articulated section, and be not more than 150mm from the face of the concrete surround.
- Height not to be greater than 1.5m above top of benching unless specific man-access requirements are provided.



Sectional Plan AA



Sectional Plan BB

Revision Details	Drawn by	Checked by	Check Date	Supx



Project: Standard details, Series 0500:
 Drainage and service ducts

Title: Manhole or catchpit backdrop

Scale (at A4): Not to scale

Drawn	JC	Date	02/2024
Checked	CHK	Date	03/2024

Drawing No:	SD/0500/22	Rev:	1
-------------	------------	------	---