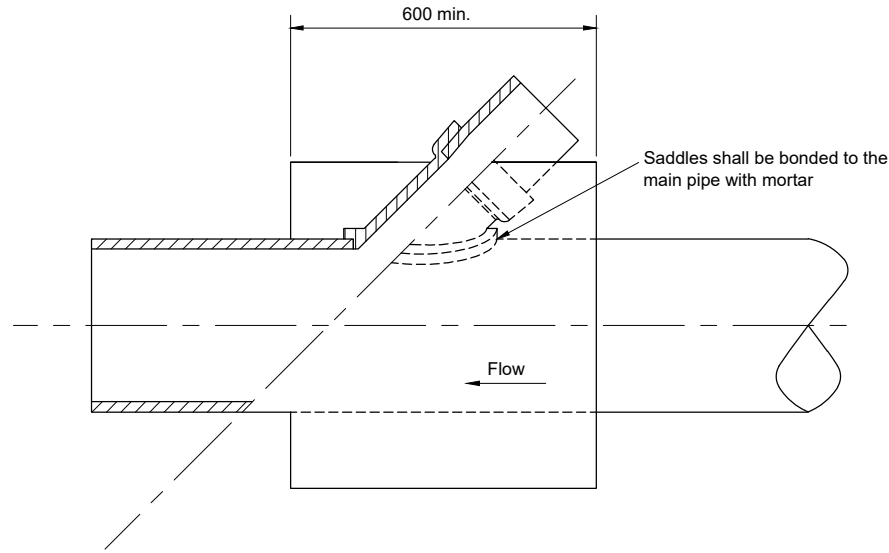
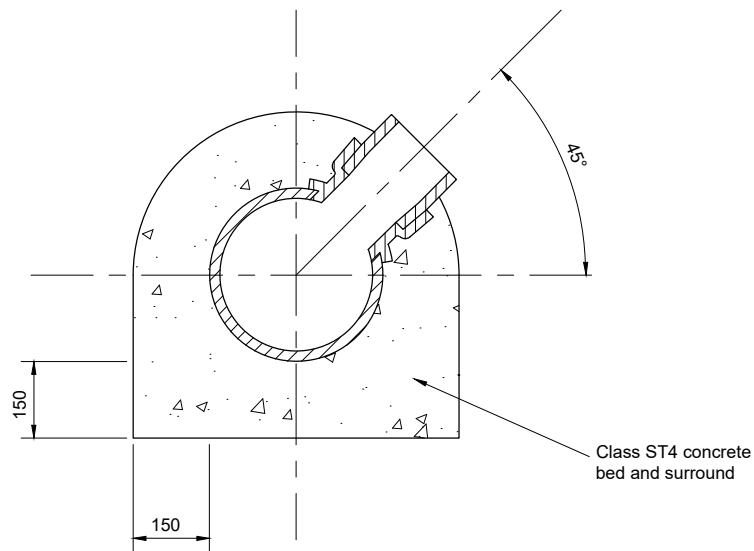


Elevation/section  
(square saddle)



Elevation/section  
(45° oblique saddle)



Section A-A

**Notes**

- © Crown Copyright and database rights 2023 AC0000849432
- 1. All dimensions are in millimetres unless otherwise stated.
- 2. The specification referred to in this drawing is the *Specification for Highway Works (SHW)* published by T.S.O. (The Stationary Office).
- 3. Connections into sewers of 300 mm diameter or less shall be made by inserting 45° angle or 90° curved square branches.
- 4. Saddle connections shall be permitted for sewers greater than 300 mm diameter but shall not be permitted where the diameter of the sewer is less than twice the diameter of the connection pipe.
- 5. Angled saddle connections may be used on sewers greater than 300 mm diameter. Square saddles may be used on sewers of 900 mm diameter and above.
- 6. Pipe saddles for concrete or clay sewers shall be bedded in Class M1 mortar and a mortar fillet formed to give a cover of at least 50 mm to the base of the saddle. Mortar shall comply with SHW CI 2404 (i).
- 7. Pipe connections shall be inspected by the Overseeing Organisation prior to the placing of concrete saddles.
- 8. Junction pipes should be of the type and class of material as the main pipe.
- 9. Junction pipes not immediately connected should be sealed in accordance with SHW CI 508.
- 10. Refer to latest version of Scottish Water *Sewers for Scotland* for further detail on saddle connections.

Revision Details			
Drawn by	Checked by	Checked Date	SupX



Project: Standard details, Series 0500:  
 Drainage and service ducts

Title: Concrete pipe saddles

Scale (at A4): Not to scale

Drawn	JC	Date	02/2024
Checked	CHK	Date	03/2024

Drawing No: SD/0500/23 Rev: 1