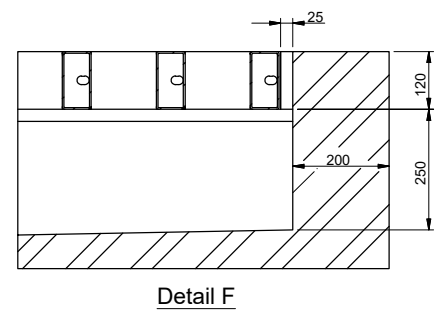
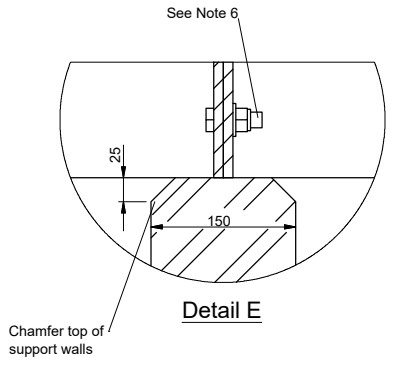
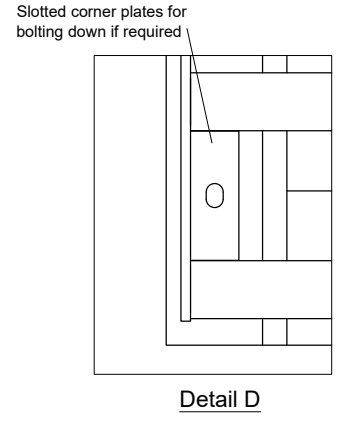
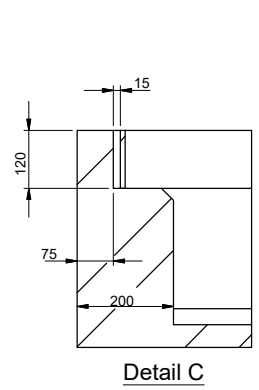
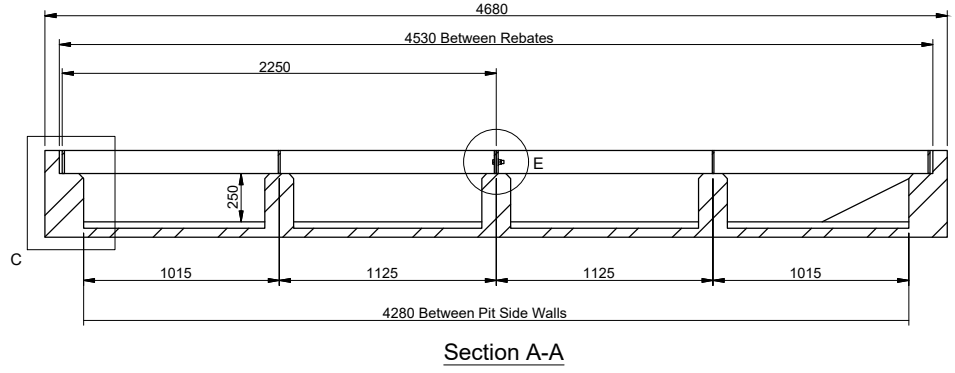
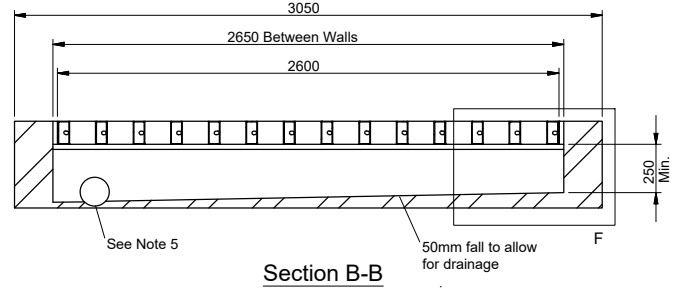
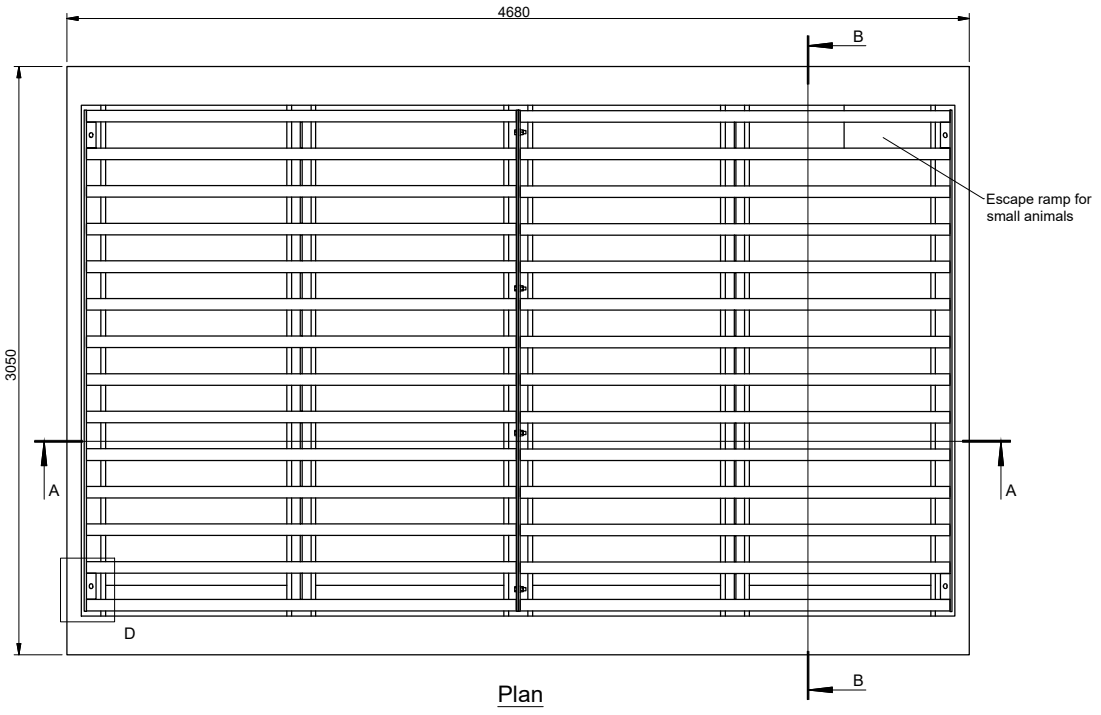


- Notes**
 © Crown Copyright and database rights 2023 AC0000849432
- All dimensions in millimeters unless otherwise stated.
 - Typical construction detail shown. This is an example of cattle grid. The applicant must provide design details for the structure and have a design certified by a Structural Engineer for review by The Highland Council's Structures Team.
 - All cattle grids to be approved by THC's Structures Section.
 - Guard Fencing to be erected on either side of the cattle grid to prevent encroachment by animals and to position vehicles correctly on the approach to the grid.
 - Min 150mm dia. hole in support walls to allow for drainage and animal access.
 - Fix sections together using M16x50 bolts, washer and Nyloc nuts.



Revision	Details	Drawn by	Checked by	Checked Date	Surf.



Project		Standard details.			
Title		Series 2600: Miscellaneous			
Scale (at A4)		40 Tonne cattle grid			
Scale (at A1)		Not to scale			
Drawn	JC	Date	05/2024		
Checked	CHK	Date	07/2024		
Drawing No:	SD/2600/01	Rev:	1		