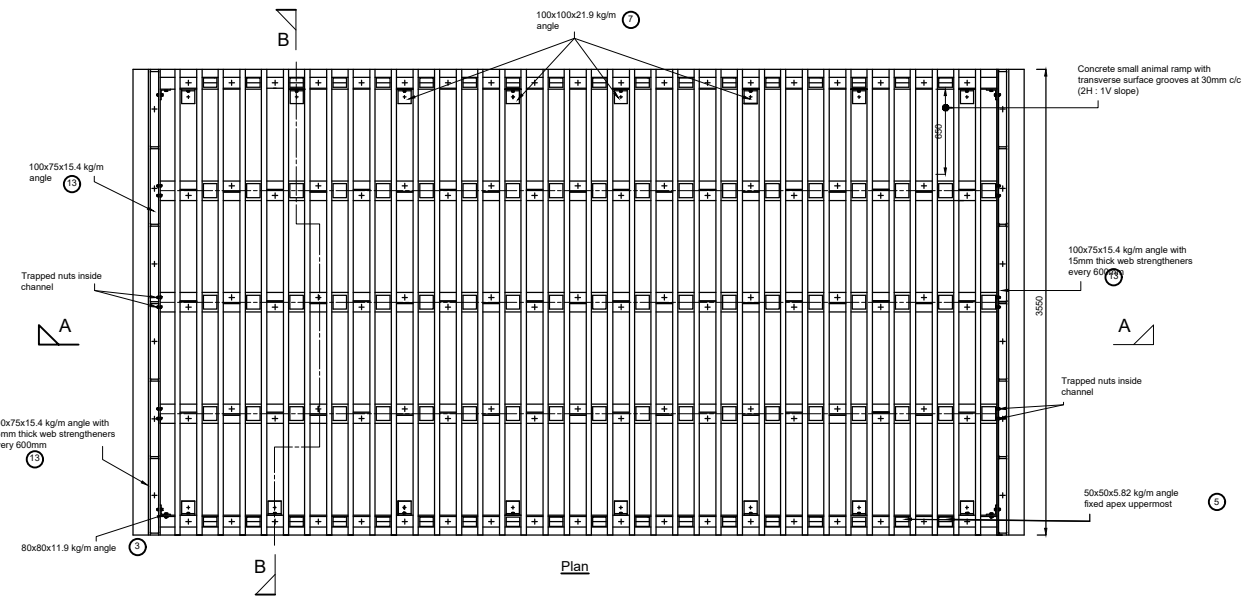
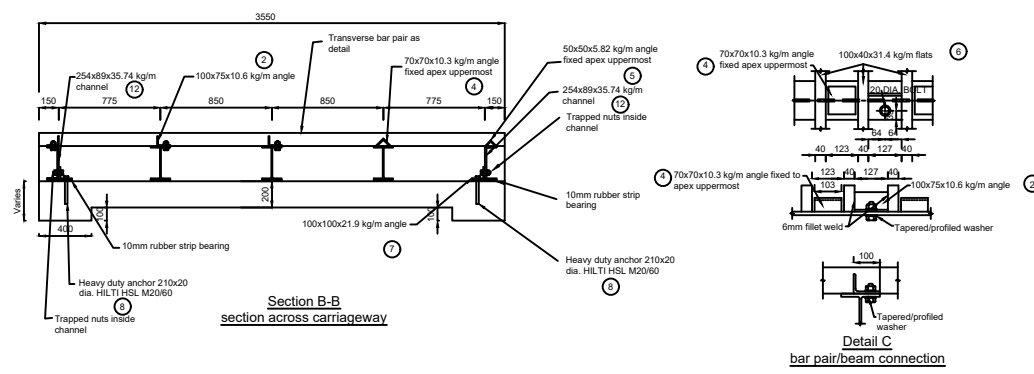
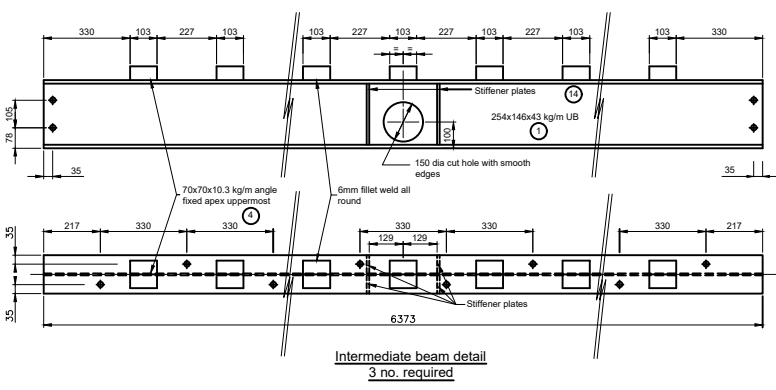
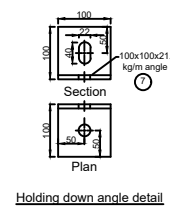
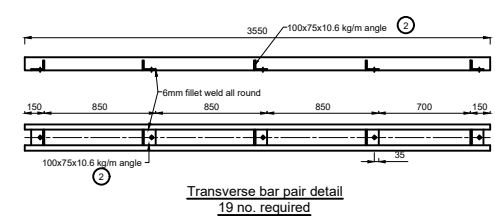
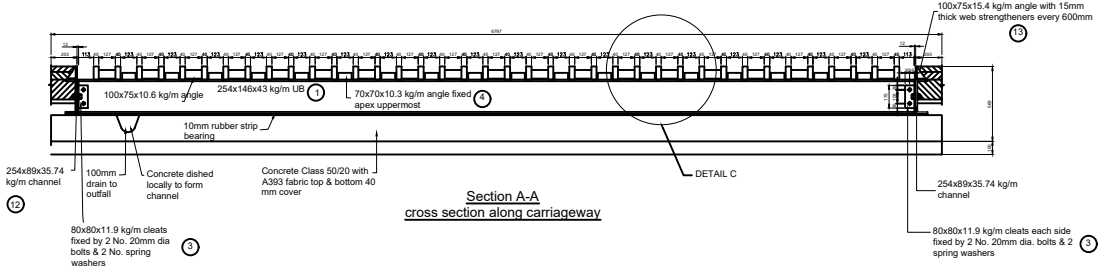


**Notes**  
 © Crown Copyright and database rights 2023 AC0000849432

- All dimensions are in millimetres unless otherwise stated.
- This is an example of deer grid. The applicant must provide design details for the structure and have a review certified by a Structural Engineer for review by The Highland Council's Structures Team.
- Full fabrication details of all components indicated on this drawing to be provided for Engineer's approval prior to fabrication.
- Steelwork, welding, bolts and galvanising to be current Standards:
  - All steel to BS EN 10025 Grade S275 J3G3
  - All black bolts to BS 4190 Grade 4.6
  - All steelwork, bolts, washers, etc. shall be hot dip galvanised to BS EN ISO 1461 (Minimum coating weight 610 g/sq.m)
  - All welds to be 6mm fillet welds
- 150 Dia. hole formed in web, with 4 No. welded stiffener plates (10mm thick x 70x233 nom.) on 2 sets of 3 No. intermediate beams. Refer to detail.



Steelwork schedule						
Item No.	Description B.S.4 Part 1 1993	Length (m)	No.	Total length (m)	Weight of each (Tonnes)	Total weight (Tonnes)
1	254x146x43 kg/m UB	6.373	3	19.119	0.274	0.822
2	100x75x10.6 kg/m Angle	0.127	95	12.065	0.001	0.128
3	80x80x11.9 kg/m Angle	0.175	16	2.800	0.002	0.033
4	70x70x10.3 kg/m Angle fixed apex uppermost	0.103	54	5.562	0.001	0.057
5	50x50x5.82 kg/m Angle fixed apex uppermost	0.175	36	3.708	0.001	0.215
6	100x40x31.4 kg/m Flat	3.550	38	134.900	0.111	4.236
7	100x100x21.9 kg/m Angle	0.100	16	1.600	0.002	0.035
8	20 Dia. Hilti HSL M20/60 Heavy duty anchors	0.210	16			
9	20 Dia. black bolts with locknuts		171			
10	Tapered washers for 20 dia. bolts		171			
11	Spring washers for 20 dia. bolts		171			
12	254x89x35.74 kg/m Channel	3.550	2	7.100	0.127	0.254
13	100x75x15.4 kg/m Angle	3.550	2	7.100	0.055	0.109
14	Stiffener plates 100x70x233 (nom.)	0.233	6	2.796	0.001	0.006



Revision Details				
Drawn by	Check by	Check Date	Surf	



Project	Standard details.		
Title	Series 2600: Miscellaneous		
	Deer grid		
Scale (at A4)	Not to scale		
Drawn	JC	Date	09/2024
Checked	CHK	Date	07/2024
Drawing No:	SD/2600/03	Rev:	1