

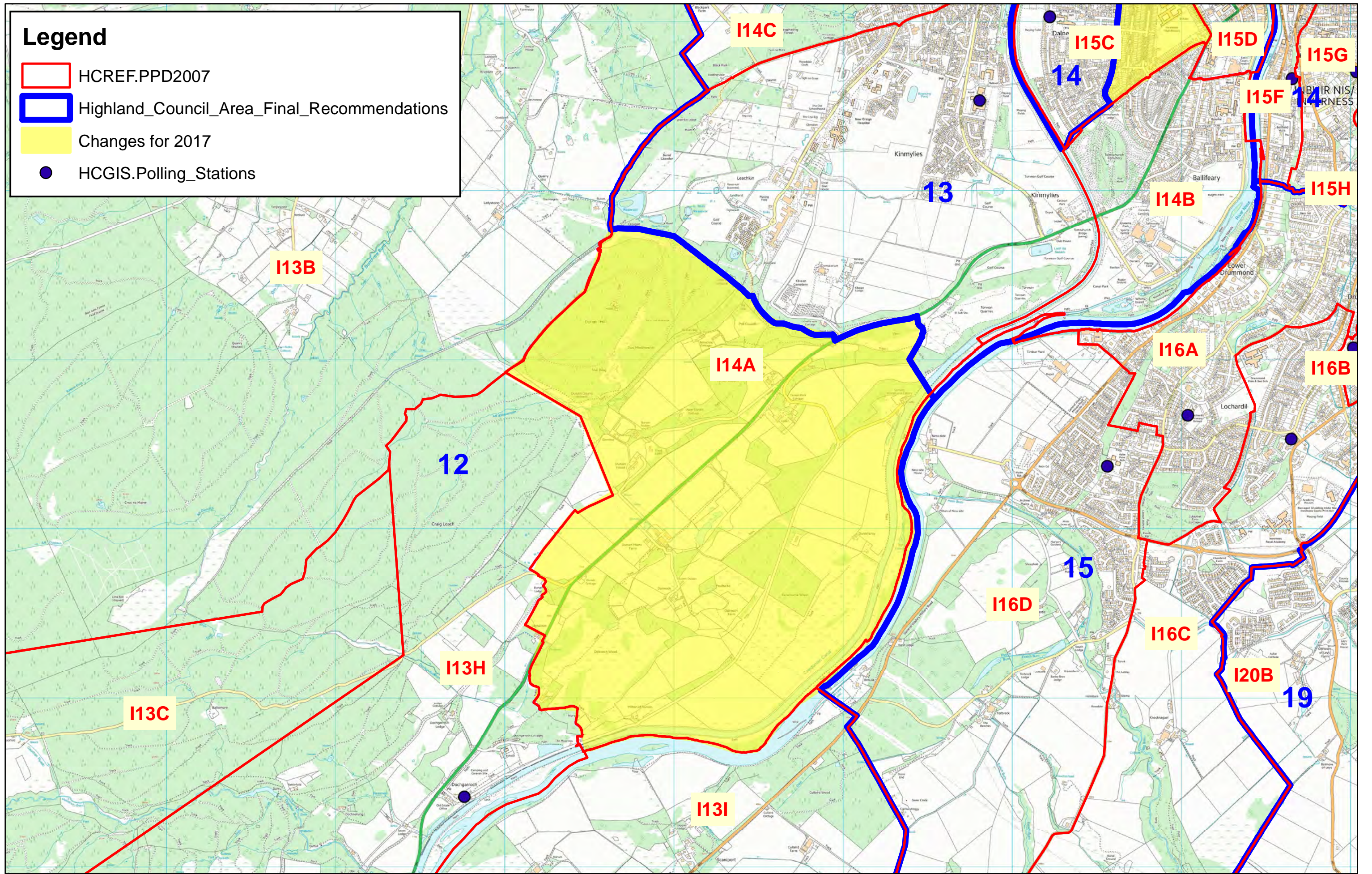


# Legend

-  HCREF.PPD2007
-  Highland\_Council\_Area\_Final\_Recommendations
-  Changes for 2017
-  HCGIS.Polling\_Stations



1:20,000



## Existing I14A Split

Reproduced from the Ordnance Survey Mapping with the permission of the Controller of Her Majesty's Stationery Office. © Crown Copyright. Unauthorised reproduction infringes Crown Copyright and may lead to civil proceedings. The Highland Council 100023369