

## Enjoy Scotland's outdoors responsibly Meal is thoir spèis do bhlàr a-muigh na h-Alba

Everyone has the right to be on most land and inland water provided they act responsibly. Your access rights and responsibilities are explained fully in the Scottish Outdoor Access Code (SOAC).

The key things to remember are:

- **Take responsibility for your own actions**
- **Respect the interests of other people**
- **Care for the environment**

Dog walkers please keep your dog under close control or on a lead especially if you encounter livestock.

Please remember to pick up your dogs mess on ALL paths and put in any bin.



Castle Leod

## Leave No Trace Na Fàg Fianais

To leave no trace means exactly that.

- Carry out what you carry in
- Leave no trace of your visit and do not leave litter
- Refrain from lighting camp fires
- If going to a remote location make sure to pack your toilet kit and make sure you are well away from running water or footpaths
- Extinguish and dispose of cigarette ends responsibly



LOCATION MAP

### PHOTO CREDITS:

Philip Waite, Patricia Schelle

### STRATHPEFFER GENERAL INFORMATION

[www.strathpeffer.org](http://www.strathpeffer.org)

[www.strathpefferpavilion.org](http://www.strathpefferpavilion.org)

[www.contin.org.uk](http://www.contin.org.uk)

For further details on the Core Paths Plan and outdoor access see The Highland Council website.

[www.highland.gov.uk/corepathplans](http://www.highland.gov.uk/corepathplans)

or

[www.outdooraccess-scotland.com](http://www.outdooraccess-scotland.com)

This leaflet is part of the Highland Core Path Implementation Programme 2010-13 and is co-funded by European Community Highland LEADER



The European Agricultural Fund  
for Rural Development:  
Europe investing in rural areas



The Scottish  
Government  
Riaghaltas na h-Alba



The Highland  
Council  
Comhairle na  
Gàidhealtachd

# Paths Around STRATHPEFFER & CONTIN

## Ceuman Mu SRATH PHEOFHAIR & CUNNDAINN



[www.highland.gov.uk/countrysideaccess](http://www.highland.gov.uk/countrysideaccess)





View of Ben Wyvis from Kinellan

## 5 Kinellan Cheann an Eilean

A short stroll from Strathpeffer village centre, this route lies on the cusp between settled farmland and the wilderness areas that lie beyond.

**LENGTH:** 5 ½ km to viewpoint and back

**TIME:** Allow up to 2 hours

**GRADE:** Good paths but several inclines – suitable for walkers and cyclists

*Notes: Please keep dogs on a lead when passing through Kinellan farm.*

### DIRECTIONS

From the square, follow the main road west (uphill) to the signpost to 'Kinellan', then turn right. At the top of the hill, turn left at the first junction onto a track around Loch Kinellan. Keep going until the signpost to Kinellan viewpoint pointing left. Then go uphill, going right at a marker and on to the ridge above Loch Kinellan. From the ridge viewpoint, you get great views westwards of the rocky wilderness stretching from Ben Wyvis round to Strathconon. On the loch below, the small wooded island is a good example of a crannog – an artificial or reinforced island dating from prehistoric times which offered protection from wolves and raiders. Today, it provides a safe nesting site for mute swans and other wildfowl.

From the path above Loch Kinellan, there are routes linking west to Contin, Garve, north east to Achterneed, and several routes back to Strathpeffer. Head east on either path from the top and downhill. When you are back on the track around the loch, keep going downhill, then up to a metal gate and signpost down hill. You can either return on the same route, or go down through the housing and towards the school. Alternatively you might want to return via Ord Wood (see route 4).

## 6 View Rock Creag an t-Seallaidh

A short but interesting forest walk to a great view over Loch Achilty.

**LENGTH:** 4 ½ km on the circular route

**TIME:** Allow one hour

**GRADE:** Good path all the way, with some steeper sections

*Notes: Obey safety signs if timber operations are taking place.*

### DIRECTIONS

From Contin Village Store, cross the main road and take the pavement west out of the village heading for Ullapool. After 400 metres, take the minor road on the right, signed 'Contin Forest', which leads past several Forestry Commission buildings to the forest walks and car park. Follow the waymarked track for Garve/Strathpeffer. (A path from the car park joins up with this route further on). The track soon becomes a path which twists and winds up through the forest.

View Rock is the obvious place to catch your breath. The rock itself shows signs of micro folding – the result of heat and pressure millions of years ago when the mountains were formed. The panorama has become enclosed by trees but still offers a rare view of Loch Achilty and the rocky hills that surround it.



View Rock

From View Rock, you can follow the path northwards until you reach the first obvious junction. Turn left to return to the car park and Contin following the waymarkers. A short detour to Loch na Crann (next right) is rewarded in summer with lilies in bloom and sometimes ospreys overhead.



Rogie Falls

## 7 Rogie Falls Eas Rothagaidh

A short walk to see salmon leaping at the white waters of Rogie Falls with the option of a much longer excursion westwards to Silver Bridge.

**LENGTH:** 2km to Rogie Falls + 1km circuit

**TIME:** Allow one and a half hours to visit Rogie Falls

**GRADE:** Mostly on surfaced path suitable for all users, although rough and steep along the Allt na Crann burn

*Notes: Obey safety signs if timber operations are taking place.*

### DIRECTIONS

From the Contin Forest car park (see View Rock route) follow the waymarkers for the 'River Walk'. This track leads directly through the forest, parallel to the Black Water, a tumbling, dark and salmon-rich river, and then the Allt na Crann burn uphill. Following this track, you come upon the path to Rogie Falls waymarked on the right. There is a suspension bridge over the falls which offers great views of leaping salmon from July to September. An interpretation panel overlooking the falls on the far bank, which gives details of the salmon's lifecycle.

At Rogie Falls, you can choose to explore the woods on the far bank, retrace your steps to Contin (or Strathpeffer via Loch Kinellan), or continue west via Rogie Farm towards the village of Garve. The path skirts the northern shores of Loch Garve and continues on to Silver Bridge – two miles beyond Garve on the main Ullapool road. For your return, there are buses from Garve, but services are infrequent – so check in advance.

## 1 Strathpeffer to Contin

### Strath Pheofhair gu Cunndainn

A pleasant walk between the villages through woodland and with views over Strath Conon

**LENGTH:** 4 km one way

**TIME:** Allow one hour

**GRADE:** Good path, some gradients on Contin section

#### DIRECTIONS

Head uphill and west from Strathpeffer village square towards the Blackmuir car park, or start from the car park.

Turn left to the woods and then right at the signpost to Jamestown. From the car park there is a short link path. Follow the path through the wood until reaching Jamestown. Turn right until the main road and cross over to the estate track at the lodge. Keep straight on at the next two junctions. The track can be muddy in places, but opens up to views of Torr Achilty and over the Strath. At the next junction by the house on the right, you can go straight and follow the track down to Contin, or go right via the Coul House Hotel. In Contin, you can explore the island, 5 Acre Wood or go on to Contin Forest.

Return via the same route or via Kinellan, or there is a regular bus service back to Strathpeffer (check times).

## 2 Blackmuir Wood

### Coille a' Bhlàir Dhuibh

A leisurely stroll through woodlands to the Touchstone Maze

**LENGTH:** 4 km circular walk (strong shoes recommended)

**TIME:** One hour – with several longer options

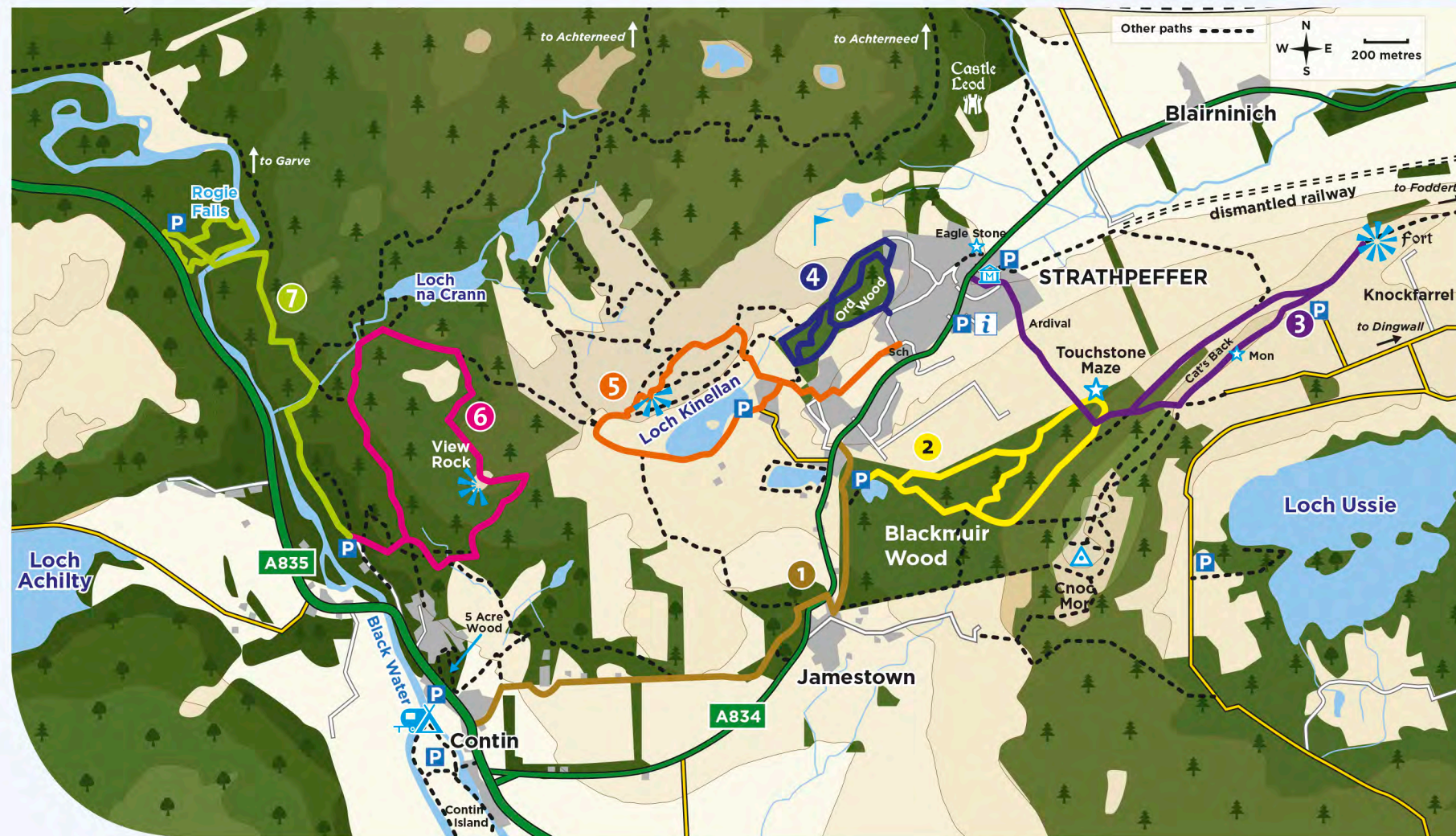
**GRADE:** A level path suitable for all users, a steep gradient to the upper track

*Notes: Please keep to edge of field if returning via Ardival Farm.*

#### DIRECTIONS

From Strathpeffer village square, head west (uphill) on the main road to a path sign to Knockfarrel. Turn left here then go straight on and follow the Touchstone Maze waymarkers.

Alternatively start at Blackmuir Wood car park. You pass Jubilee Pond – used as a curling pond in the cooler winters of Victorian times – and then the path meanders on a level surface suitable for pushchairs and wheelchairs. There are several rest stops on the way and open views to the north, revealing the spires of Strathpeffer set against the backdrop of Ben Wyvis. The maze itself is laid out to follow the



lunar cycle – mirroring many of Scotland's much older stone circles. As you wind your way in towards the centre of the maze, you pass through 3,000 million years of Scotland's geology.

You can return to the village by several alternative routes – directly downhill by following the field edge via Ardival Farm, along the forest road, or by retracing your steps. There are also other routes linking to Dingwall and Loch Ussie. Dingwall is only one hour away via the Cat's Back and Knockfarrel.

## 3 Knock Farril from Strathpeffer

### Cnoc Fearralaidh bho Srath Pheofhair

Rising at the heart of Mid Ross, Knock Farril was the site of a hill fort in Iron Age times and still offers a fantastic bird's eye view of the area.

**LENGTH:** 6 km return route

**TIME:** Two hours return – but lots of longer options

**GRADE:** Easy walking with inclines, some muddy sections in wet conditions

*Notes: Knock Farril is the hill fort, whilst Knockfarrel is the settlement on the south side of the hill. Obey safety signs if timber operations are taking place. Please keep to edge of field by Ardival Farm.*

#### DIRECTIONS

There are many routes to Knock Farril, this one goes via Ardival Farm. From Strathpeffer village square head east (downhill) to a path sign and turn right to 'Blackmuir Woods & Knockfarrel', just past the Ben Wyvis Hotel. Stay on this road past Ardival Farm, continue straight along the edge of the field to the woods. You can then continue straight on or go left to the maze and on to the forest track. Then pass through a gate and stile and come out onto the open hill of the Cat's Back. Castle Leod, home to the Earl of Cromartie, chief of the Clan Mackenzie, can be seen below to your left. The path continues along the hillside to Knock Farril – the site of a 2,000 year old Iron Age fort. The hill top is encircled by a vitrified wall, where stones were melted together by fire to create strong ramparts.

The summit panorama reveals the Cromarty Firth, crofting lands north to the Heights, the ridge of Ben Wyvis, south to Loch Ussie and in the west the jagged peaks of Strathfarrar, Strathconon and the Fannichs.

Return to Strathpeffer on the same route, or alternatively follow the ridge path along the 'Cat's Back' – descend from the summit of Knock Farril to the car parking area and climb the hill opposite. On the ridge, you pass a small stone statue – a gift from Armenia to local school children who raised money to help victims of the 1988 earthquake. From Knock Farril, there are also connecting routes down to Dingwall, Fodderty and south to Loch Ussie, Brahan and the River Conon.

## 4 Ord Wood Coille an Ùird

There are several walks around and through Ord Wood with great views over the village.

**LENGTH:** The circular loop is approx. 3 km

**TIME:** Allow 1 hour – depends on route

**GRADE:** Easy walking with some inclines



#### DIRECTIONS

From Strathpeffer village square take the golf course road and turn left at the first crossroads, (there's a church on the right). Keep right at the V-junction, and you will soon see the waymarked track. The wood was felled and replanted in 2010 and now offers open views over the village and down the Strath.

Beyond the old Kinettas graveyard, turn left going slightly uphill. At the next waymarker the right fork ascends to the top of the hill but keep left for a longer walk. You get on to a wider track and take a right turn uphill along a winding path to the high ridge. Alternatively stay on the wider track then follow the fence to keep on the lower path round the hill.

Both these routes meet at a 5 way junction thus giving an number of onward options;

- Continue east along the ridge, with a steep descent to a gate then turning right to return the same way.
- The left-hand route follows the edge of the golf course to the club house, then goes down the road to the village centre.
- The right turn goes downhill towards the start of the path.

Another option at the west end of the wood, is to continue on through two kissing gates to return to the village square via Kinellan Farm, and the main road.

