

Paths Around Strontian

1 STRONTIAN COMMUNITY WOODLAND

This walk takes you through the old 'Policy Woodlands' of the Sunart Estate. The path is smooth and dry but does have some steeper slopes. At the top of the woodland there is a kissing gate onto the hill beyond (Tom an t-Sithein - The hill of the fairies). If you are energetic enough, the view from the summit of this hill is well worth the steep climb to the top. This path network



continues to grow through the work of the Sunart Community Council.

Allow 45 mins - 1 mile.
If climbing Tom an t-Sithein allow 1½ hours - 1¼ miles
Easy - sensible footwear
Parking - Village Centre

2 PHEMIE'S WALK

This Forestry Commission walk starts from the western end of the Strontian bridge. It is a circular walk through a beautiful mixed woodland of oak, beech and silver fir. There are some steep slopes initially but the path evens out to give beautiful views over Loch Sunart and Strontian.



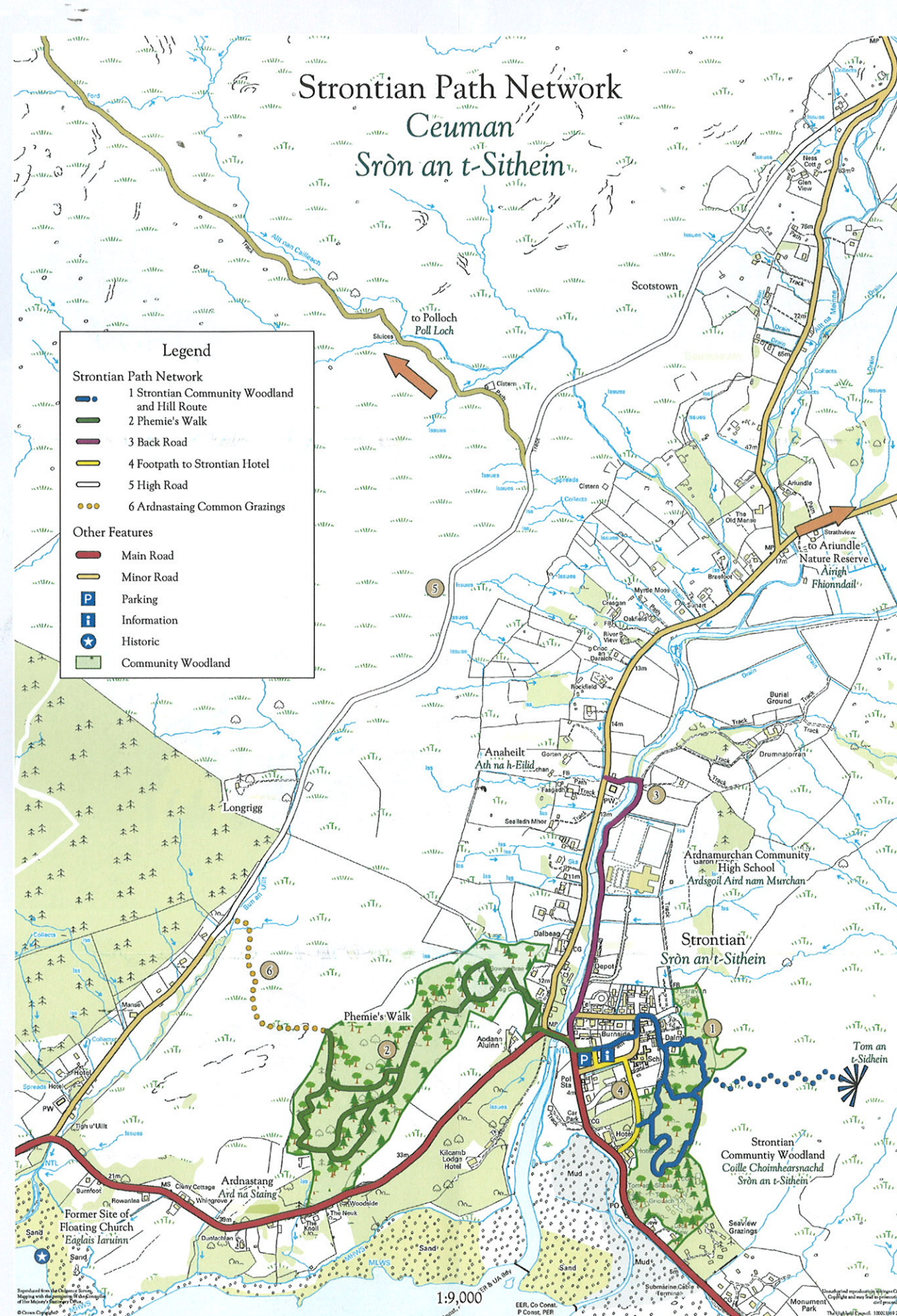
Allow 1¼ hours - 1¼ miles
Moderate - sensible footwear
Parking - Village Centre

3 THE BACK ROAD 'AN RATHAD CUIL'

This short walk takes you along the Strontian River from the Village Centre, past the new Community High School, and on to the church built by Thomas Telford. Here you have the option of returning the same way or crossing the river and returning via the main road.

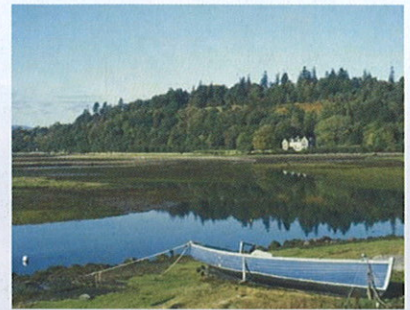


Allow 30 mins - ½ mile
Easy - sensible footwear
Parking - Village Centre



4 FOOTPATH TO STRONTIAN HOTEL

This short walk takes you from Strontian Primary School to the Strontian Hotel (originally known as the London Inn) on the shores of Loch Sunart. Here you have the option to return by the main road and take the right hand turn past the old St Mary's Church (please remember this is now a private residence and keep to the track).



Allow 20 mins - ¼ mile
Easy - sensible footwear
Parking - Village Centre

5 ARDNASTAING TO SCOTSTOWN 'THE HIGH ROAD'

This ancient route takes you from Ardnastaing to Scotstown along one of the many coffin routes which converge on Eilean Fhiannan (St Finnans Isle) on Loch Shiel. On this walk you will find wonderful views of the surrounding mountains and Loch Sunart. (Three quarters of the way along you will see the coffin route turning uphill towards Ben Resipole, the Corantee lead mines and Polloch). This can be done as a circular walk from the village centre by taking Phemie's Walk and Ardnastaing Common Grazings paths to the High Road and returning from Scotstown by the single track road.



Allow 1½ hours - 2½ miles. Circular Walk allow 3 hours - 5 miles.
Moderate - waterproof footwear
Parking - Village Centre

6 ARDNASTAING COMMON GRAZINGS

A waymarked route guides you across rough hill pastures from Phemie's walk to the High Road with splendid open views over Loch Sunart. Walk this as part of a circular route with the High Road or as an alternative approach to the coffin route to Polloch.

"Cattle grazing so please keep your dog under close control at all times".

Allow 20 minutes for this section - ¼ mile
Rough ground, wet in places - walking boots strongly recommended
No vehicle access